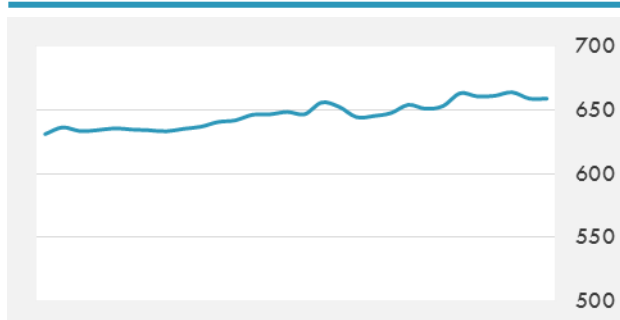
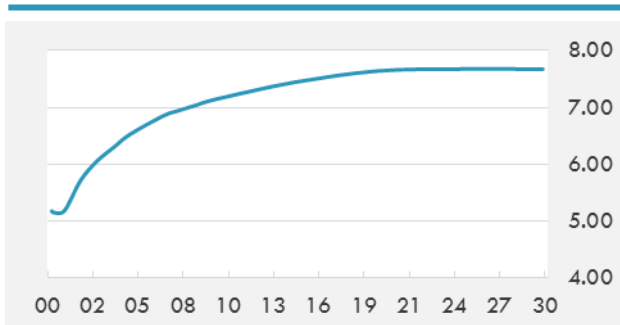


BEIRUT STOCK EXCHANGE

	Last	Daily %	YTD %	Dividend %
MSCI Lebanon	659.1	-0.75%	0.75%	
Development and Reconstruction				
Solidere A	8.13	0.49%	1.50%	
Solidere B	8.07	-0.25%	1.13%	
Banking				
Audi Listed	5.75	-4.01%	0.00%	8.67%
BLC Listed	0.93	0.00%	0.00%	
BOB Listed	18.8	0.00%	0.00%	3.52%
Byblos Listed	1.6	4.58%	0.00%	8.27%
BEMO Listed	1.3	0.00%	0.00%	4.07%
BLOM Listed	11.7	-0.43%	0.52%	8.47%
Trading				
RYMCO	3.25	0.00%	0.00%	
Industrial				
Holcim	14.5	0.00%	0.28%	16.46%
Ciments Blancs	2.27	0.89%	0.89%	

MSCI LEBANON INDEX - 30 DAYS CHART

LEBANESE USD SOVEREIGN CURVE


- International consulting group McKinsey & Company will submit a recommendation to the Lebanese government in the next five to six months on the ideal economic model Lebanon should follow in the future, Economy and Trade Minister Raed Houry said Wednesday.
- Oman has signed a deal for oil and gas exploration with a Lebanese company, one month after Lebanon approved its first offshore energy exploration, state media said Wednesday.

Source: Daily Star, Gulf Base

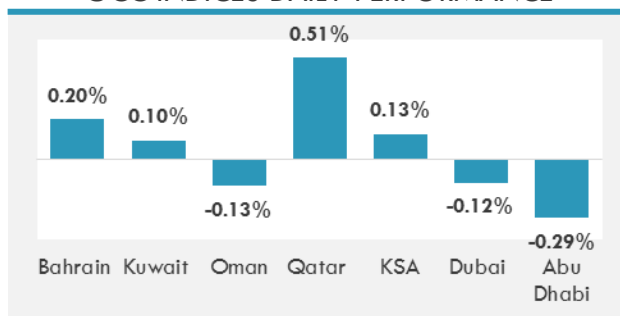
GCC EQUITY INDICES

	Last Price	Daily %	YTD %
Bahrain	1317.81	0.20%	-1.02%
Kuwait	6525.23	0.10%	1.85%
Oman	5099.53	-0.13%	0.09%
Qatar	9048.17	0.51%	6.14%
KSA	7300.37	0.13%	1.02%
Dubai	3499.36	-0.12%	3.78%
Abu Dhabi	4579.74	-0.29%	3.91%

MSCI GCC INDEX - 30 DAYS CHART

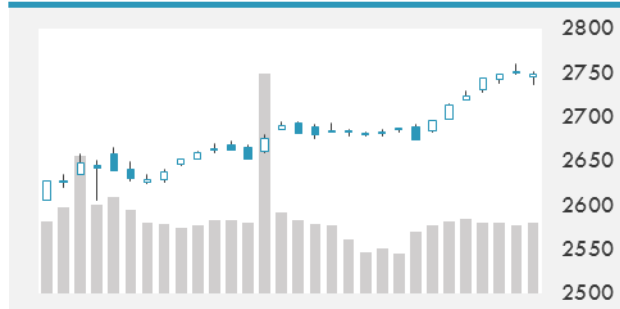
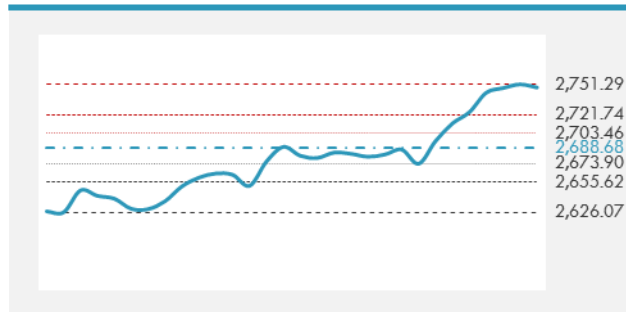
LOCAL/GCC FOREIGN EXCHANGE

	Cross	Last Price
Lebanese Pound Spot	USD/LBP	1511.82
Bahraini Dinar Spot	USD/BHD	0.37704
Kuwaiti Dinar Spot	USD/KWD	0.30169
Omani Rial Spot	USD/OMR	0.38498
Qatari Riyal Spot	USD/QAR	3.6738
Saudi Riyal Spot	USD/SAR	3.7505
UAE Dirham Spot	USD/AED	3.673

GCC INDICES DAILY PERFORMANCE


UNITED STATES EQUITY MARKET INDICES

	Last Price	Daily %	YTD %	Δ10D Vol
Major Indices				
Dow Jones	25369.13	-0.07%	2.63%	0.23%
S&P 500	2748.23	-0.11%	2.79%	0.27%
Nasdaq	7153.572	-0.14%	3.62%	0.24%
Sectors Indices				
Discretionary	812.42	-0.02%	3.45%	-0.24%
Staples	585.41	-0.44%	-0.34%	0.53%
Energy	555.32	-0.10%	4.11%	-0.35%
Financials	478.72	0.85%	3.19%	0.56%
Healthcare	993.05	-0.13%	3.84%	0.30%
Industrials	662.55	0.08%	3.88%	0.24%
IT	1150.45	-0.31%	4.00%	0.66%
Materials	391.48	-0.58%	3.31%	1.45%
Telecom	159.67	-0.90%	-3.86%	0.16%
Utilities	257.59	-1.12%	-3.66%	0.37%
Real Estate	195.74	-1.54%	-3.98%	1.29%

S&P 500 INDEX - 30 DAYS CHART

S&P 500 SUPPORT & RESISTANCE


- Shares in Tokyo fell for the first time this year after the yen strengthened to a six-week high.
- U.S. stocks declined for the first time this year as reports that China is considering slowing purchases of U.S. Treasuries sent rate-sensitive property, utilities and telecom firms lower.
- European stocks fell, ending a five-day streak of gains after officials reviewing China's foreign-exchange holdings were said to have recommended slowing or halting purchases of Treasuries.

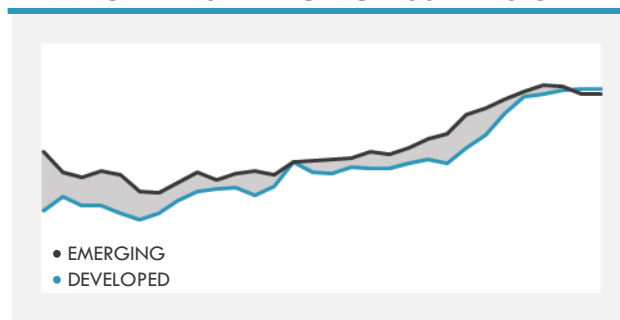
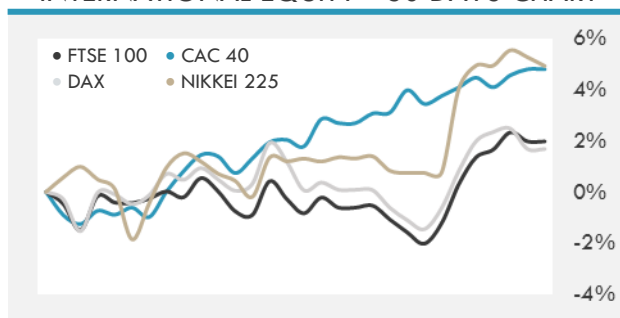
Source: Bloomberg

INTERNATIONAL MARKETS INDICES

	Last Price	Daily %	YTD %	Δ10D Vol
World	1290.03	-0.05%	2.87%	0.39%
Developed	2162.28	0.02%	2.80%	0.18%
Emerging	1197.53	-0.63%	3.37%	1.94%
Frontier	3094.08	0.16%	3.54%	0.15%
Europe	134.64	-0.33%	2.46%	0.18%
Latin America	2925.2	-0.95%	3.43%	1.92%
Asia Pacific	180.88	0.17%	4.07%	0.22%

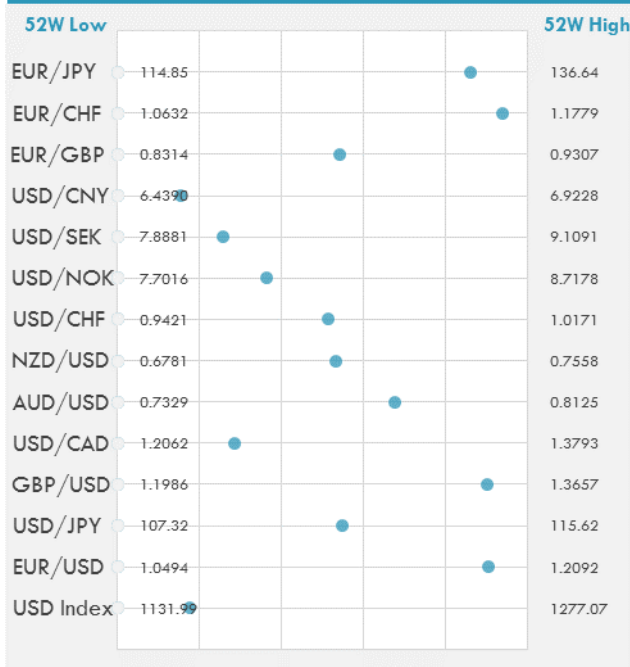
INTERNATIONAL EQUITY INDICES

	Last Price	Daily %	YTD %	Δ10D Vol
EuroStoxx 50	3609.83	-0.36%	3.02%	0.29%
FTSE 100	7748.51	0.23%	0.79%	-0.07%
CAC 40	5504.68	-0.35%	3.62%	0.50%
DAX	13281.34	-0.78%	2.82%	1.21%
Swiss SMI	9524.96	-0.90%	1.53%	1.73%
Nikkei 225	23710.43	-0.33%	4.15%	0.38%
CSI 300	4206.17	-0.04%	4.35%	-7.30%

DEVELOPED VS EMERGING - 30 DAYS CHART

INTERNATIONAL EQUITY - 30 DAYS CHART


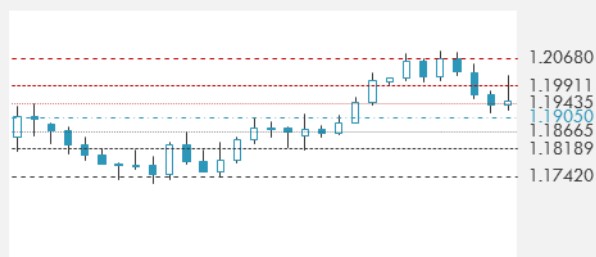
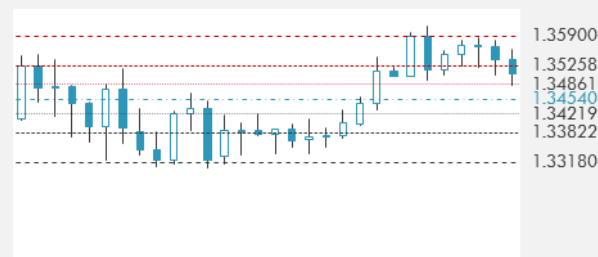
FOREIGN EXCHANGE MARKET

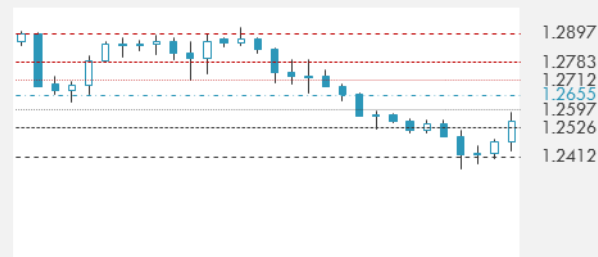
	Last Price	Daily %	Δ10D	Vol 25	ΔRR
Major USD Cross Rate					
USD Index	1157.29	0.14%	-0.09%	-	
EUR/USD	1.194	-0.07%	-0.83%	0.273	
USD/JPY	111.85	0.37%	0.52%	-0.760	
GBP/USD	1.3489	-0.13%	-0.65%	0.025	
USD/CAD	1.2554	0.06%	0.02%	0.155	
AUD/USD	0.7866	0.29%	0.15%	-0.160	
NZD/USD	0.7194	-0.06%	0.13%	-0.215	
USD/CHF	0.9806	0.25%	-0.46%	-0.575	
USD/NOK	8.0699	-0.05%	-0.29%	0.065	
USD/SEK	8.2002	-0.01%	-1.47%	0.230	
USD/CNY	6.5135	0.08%	-0.24%	0.295	
Major EUR Cross Rate					
EUR/GBP	0.88521	0.07%	0.04%	0.175	
EUR/CHF	1.1708	0.18%	0.08%	-0.213	
EUR/JPY	133.55	0.31%	-0.06%	-0.460	

DISTANCE FROM 52 WEEKS LOW/HIGH


- The dollar rebounded from a six-week low against the yen, as comments from China about its investments plans lifted Treasuries. The Aussie gained on better-than-expected retail sales.
- The dollar pared losses as the Canadian dollar and Mexican peso plunged late in the New York session, amid reports that Canadian officials see higher odds that the U.S. will leave Nafta.

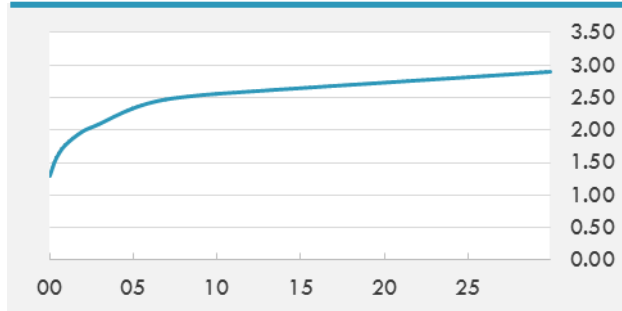
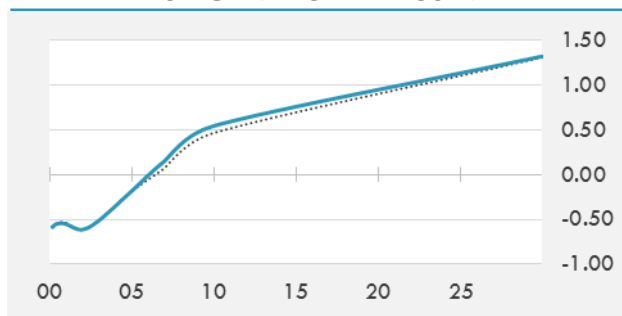
Source: Bloomberg

EUR/USD 30 DAYS SUPPORT & RESISTANCE

GBP/USD 30 DAYS SUPPORT & RESISTANCE

USD/JPY 30 DAYS SUPPORT & RESISTANCE

USD/CAD 30 DAYS SUPPORT & RESISTANCE


GLOBAL BOND INDICES

	Yield	ΔYield (in Bps)
Benchmark Indices		
US 10 Years Benchmark	2.5568	0.004
EU 10 Years Benchmark	0.543	0.077
UK 10 Years Benchmark	1.286	0.003
Sovereign Bonds		
US Treasury Bond	2.298	0.005
Eurozone Sovereign Bond	0	0
Japan Sovereign Bond	-0.055	0.015
Corporate Bonds		
US Corporate TR	3.341	-0.003
US High Yield Bond TR	5.630	0.096
EUR Aggregate Corporate TR	0.750	0.015
EUR High Yield TR	3.249	0.030
USD Emerging Market IG & HY	4.542	0.022

US TREASURIES YIELD CURVE

EUR GENERIC YIELD CURVE


- Treasuries gained after China pushed back on report that Beijing officials are looking to slow U.S. bond buying. Short-dated Aussie notes were hit lower after solid retail sales data.
- Bund futures are marginally lower, falling with Treasuries after China officials are said to recommend slowing or halting buying in U.S. Treasuries. Bunds outperform with some expectations China buying may be diverted more into European bonds.

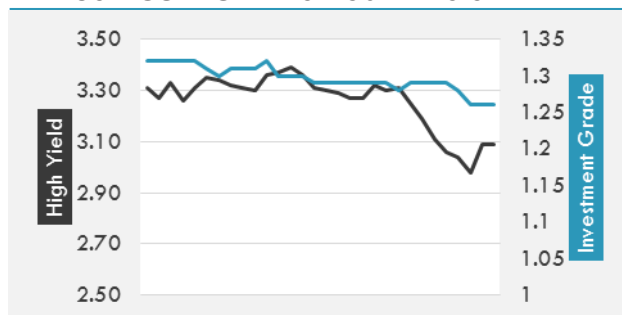
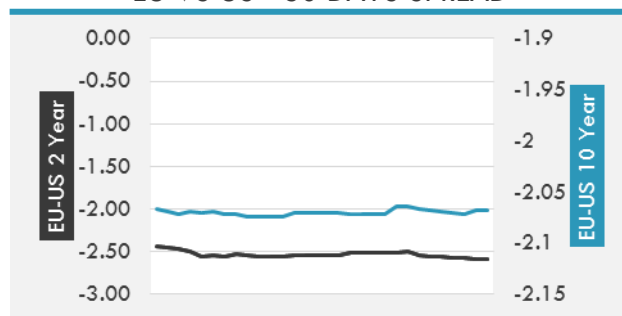
Source: Bloomberg

OVERNIGHT RATES - SWAPS

	Yield	ΔYield (in Bps)
3M USD LIBOR	1.70457	0.0000
3M EUR EURIBOR	-0.329	0.0000
3M GBP LIBOR	0.52131	0.0000
3Y USD SWAP	2.2708	0.0013
5Y USD SWAP	2.3706	-0.0028
10Y USD SWAP	2.5393	-0.0022
30Y USD SWAP	2.6875	-0.0050

FIXED INCOME SPREADS

	Spread	ΔSpread (in Bps)
USD 3M vs 10Y Spread	1.1323	0.0115
USD 2Y vs 10Y Spread	0.58033	(0.0005)
USD IG Spread	1.26	-
USD HY Spread	3.09	0.1100
EU vs US 10Y Spread	-2.024	0.0410
EU vs US 2Y Spread	-2.5863	(0.0153)
EM vs Benchmark Spread	205.9	0.500

USD CORPORATES - 30 DAYS SPREAD

EU VS US - 30 DAYS SPREAD


GLOBAL COMMODITIES MARKET

	Last Price	Daily %
Commodity Index	88.24	0.16%

Energy

WTI Crude Future	63.57	0.97%
Brent Crude Future	69.2	0.55%
NYMEX Gasoline	183.27	-0.19%
NYMEX Heat Oil	208.07	0.70%
ICE Gasoil	613	1.07%
NYMEX Natural Gas	2.906	-0.58%

Precious Metals

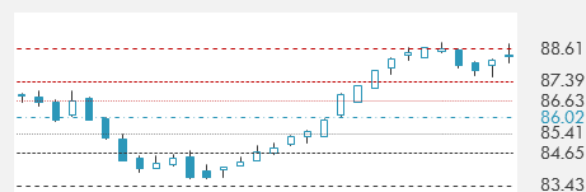
Gold Spot \$/Oz	1316.89	0.31%
Silver Spot \$/Oz	16.9765	0.02%
Platinum Spot \$/Oz	971.55	0.56%
Palladium Spot \$/Oz	1086.38	-1.40%
Gold Future	1319.3	0.43%
Silver Future	17.035	0.15%
Platinum Future	978.8	0.67%
Palladium Future	1077.4	-1.89%

Base Metals

LME Aluminum	2182	1.37%
LME Copper	7153	0.72%
LME Zinc	3336	0.03%
LME Nickel	12935	1.89%
LME Lead	2550	0.20%
LME Tin	20065	0.58%

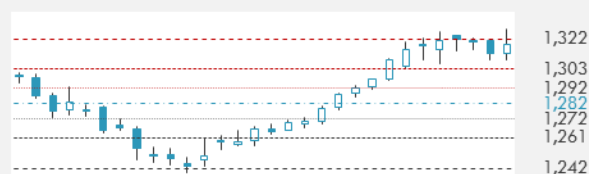
Agricultural

Corn CBT	349	0.00%
Wheat CBT	434.25	0.46%
Soybeans CBT	955	-0.91%
Bean Meal CBT	316.4	-0.57%
Rough Rice CBT	11.905	-0.33%
MDE Palm Oil	2622	0.96%
Soybean CBT	33.45	-0.74%
Coffee ICE	123.95	-0.96%
Sugar #11 ICE	14.65	-0.54%
Cotton #2 ICE	79.65	1.66%
Cocoa ICE	1941	2.21%
Ethanol CME	1.324	-0.15%
Lumber CME	460.7	0.88%
Orange Juice ICE	136.9	0.33%
Live Cattle CME	118.675	-0.71%
Feeder Cattle CME	142.225	-0.37%
Lean Hogs CME	75.775	-1.30%

COMMODITY INDEX SUPPORT & RESISTANCE

WTI OIL 30 DAYS SUPPORT & RESISTANCE


- From being a source of concern, U.S. supplies have turned into a source of optimism for oil investors.
- Gold advances for second day as equity rally stalls and dollar weakens on muted demand for risk assets after roller-coaster day for government bonds.

Source: Bloomberg

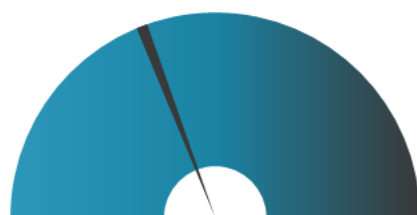
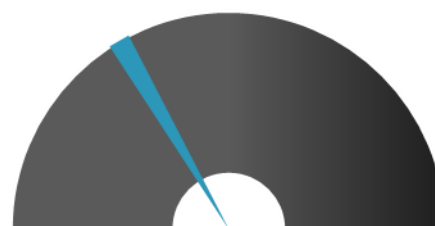
GOLD 30 DAYS SUPPORT & RESISTANCE

SILVER 30 DAYS SUPPORT & RESISTANCE


TOP 10 WINNERS

	Ticker	Last Price	Daily %
S&P 500 Stocks			
INTUITIVE SURGIC	ISRG	423.76	6.58
PRICELINE GROUP	PCLN	1872.91	0.41
UNITED CONTINENT	UAL	73.08	6.72
ALLIANCE DATA	ADS	272.09	1.54
NETFLIX INC	NFLX	212.52	1.53
EVEREST RE GROUP	RE	219.97	1.39
STATE ST CORP	STT	104.25	2.81
BERKSHIRE HATH-B	BRK/B	205.61	1.28
PRUDENTL FINL	PRU	121.51	2.11
CHIPOTLE MEXICAN	CMG	321.8	0.76

TOP 10 LOSERS

	Ticker	Last Price	Daily %
S&P 500 Stocks			
EQUINIX INC	EQIX	443	-2.85
MOHAWK INDS	MHK	272.09	-2.75
LAM RESEARCH	LRCX	191.66	-2.99
BROADCOM LTD	AVGO	262.83	-2.11
WW GRAINGER INC	GWG	231.75	-2.33
PUBLIC STORAGE	PSA	196.11	-2.51
SHERWIN-WILLIAMS	SHW	419.53	-1.10
ESSEX PROPERTY	ESS	232.22	-1.71
CHARTER COMMUN-A	CHTR	350.83	-1.11
KANSAS CITY SOUT	KSU	106.54	-3.56

S&P 500 DISTRIBUTION

WINNERS
LOSERS
S&P VOLATILITY INDEX

LOW VOLATILITY
HIGH VOLATILITY

- After leading the pizza chain for eight years, Domino's CEO Patrick Doyle is stepping down in June, and will be replaced by Richard Allison, currently president of international business.
- Citing a "heavy reliance on tourism," Florida won't be included under the Trump administration's plan to expand offshore drilling across most U.S. coastal waters.
- Confirming earlier reports, the Renault-Nissan-Mitsubishi Alliance is creating one of the largest automotive venture-capital funds.
- "I think President Trump deserves big credit for bringing about the inter-Korean talks," South Korean President Moon Jae-in said at his New Year's news conference. "It could be a resulting work of the U.S.-led sanctions and pressure."
- China will finalize orders for 184 Airbus A320 aircraft soon, French President Emmanuel Macron said after talks with Xi Jinping.
- Sony's new pet dog "Aibo," goes on sale in Japan tomorrow, but it's just the beginning of the company's return to robotics, CEO Kazuo Hirai told Bloomberg TV.
- Apple will hand its China cloud operations over to a state-owned partner Guizhou-Cloud Big Data Industry Co. on February 28, according to The Wall Street Journal.
- Nvidia announces that some of its chipsets were affected by the Spectre security flaw.
- Shares of Helios and Matheson Analytics jump in premarket trading after CEO Ted Farnsworth tips off that the MoviePass owner has explored blockchain technology for over a year and would consider an initial coin offering.

KEY ECONOMIC INDICATORS

Country	Event	Surv (M)	Actual	Prior	Time
Canada	New Housing Price Index MoM	0.20%	--	0.10%	15:30
China	Money Supply M2 YoY	9.20%	--	9.10%	
China	New Yuan Loans CNY	1000.0b	--	1120.0b	
Eurozone	Industrial Production SA MoM	0.80%	--	0.20%	12:00
Eurozone	Industrial Production WDA YoY	3.10%	--	3.70%	12:00
Iraq	CPI YoY	--	--	0.40%	
Italy	Retail Sales MoM	1.00%	--	-1.00%	11:00
Italy	Retail Sales YoY	1.00%	--	-2.10%	11:00
Japan	Leading Index CI	108.6	108.6	106.5	7:00
Jordan	CPI YoY	--	--	3.33%	
Jordan	Industrial Production YoY	--	--	0.17%	
Jordan	M1 Money Supply YoY	--	--	-1.13%	
Qatar	CPI YoY	--	--	0.20%	
United States	Initial Jobless Claims	245k	--	250k	15:30
United States	PPI Final Demand MoM	0.20%	--	0.40%	15:30
United States	Monthly Budget Statement	-\$26.0b	--	-\$138.5b	21:00
United States	PPI Final Demand YoY	3.00%	--	3.10%	15:30
United States	Continuing Claims	1920k	--	1914k	15:30
United States	PPI Ex Food and Energy MoM	0.20%	--	0.30%	15:30
United States	PPI Ex Food and Energy YoY	2.50%	--	2.40%	15:30

Source: Bloomberg

Banque BEMO sal
Head Office - Private and Corporate Banking

 96 Pasteur Building, Pasteur Street, Medawar Area, P.O. Box: 16-6353, Beirut - Lebanon
 Tel: + 961 1 568 250 Fax: + 961 1 568 266

Wealth & Investment Management research@bemobank.com

 Beirut Central District Riad El Solh Square, Esseily Building Bloc A, 7th Floor Beirut - Lebanon
 Tel: + 961 1 992 600 Fax: + 961 1 983 368
www.bemobank.com
Disclaimer:

This report is published for information purposes only. The information herein has been compiled from, or based upon sources considered to be reliable (Bloomberg, SeekingAlpha, DailyStar...), but we do not guarantee or assume responsibility for its completeness and accuracy. This document should not be construed as a solicitation to take part in any investment, or as constituting any representation or warranty on our part. This report is not to be relied upon in substitution for the exercise of specialists.

We may not have taken any steps to ensure that the securities referred to in this report are suitable for any particular investor. The investments and services contained or referred to herein are not purported to be exhaustive, any person considering an investment should seek specialist advice on the suitability of an investment.

Nothing in this report constitutes investment, legal, accounting or tax advice, or a representation that any investment or strategy is suitable or appropriate to your individual circumstances, or otherwise constitutes a personal recommendation. Clients understand that it is their responsibility to seek legal and/or tax advice regarding the legal and tax consequences of their investment transactions. The consequences of any action taken on the basis of information contained herein are solely the responsibility of the recipient.

Investment instruments are subject to risk, including possible loss of principal amount invested. Past performance should not be taken as an indication or guarantee of future performance, and no representation or warranty, express or implied, is made regarding future performance. The value of securities and financial instruments is subject to exchange rate fluctuation that may have a positive or adverse effect on the price or income of such securities or financial instruments. Some investments mentioned in this report may have a high level of volatility. High volatility investments may experience sudden and large falls in their value causing losses when that investment is realized. Some investments may not be readily realizable and it may be difficult to sell or realize those investments, similarly it may prove difficult to obtain reliable information about the value, or risks, to which such an investment is exposed.

This report may provide the addresses of websites or references. We have not reviewed any such site and takes no responsibility for the content contained therein. Such address or reference is provided solely for convenience and information. Accessing such website through this report shall be at the recipients own risk.