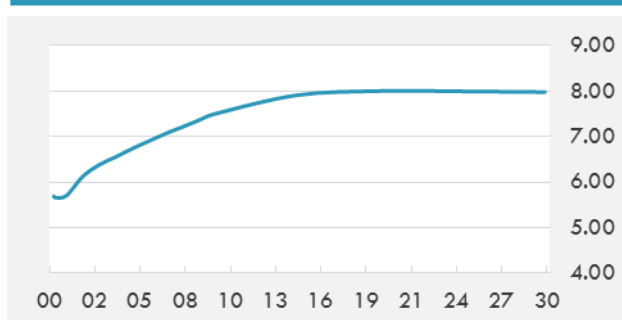


BEIRUT STOCK EXCHANGE

	Last	Daily %	YTD %	Dividend %
MSCI Lebanon	678.74	-0.31%	3.75%	
Development and Reconstruction				
Solidere A	8.45	-0.59%	5.49%	
Solidere B	8.32	-1.77%	4.26%	
Banking				
Audi Listed	5.9	0.00%	2.61%	8.46%
BLC Listed	0.93	0.00%	0.00%	
BOB Listed	18.8	0.00%	0.00%	3.52%
Byblos Listed	1.62	1.25%	1.25%	8.22%
BEMO Listed	1.17	0.00%	-10.00%	4.52%
BLOM Listed	12	0.00%	3.09%	8.52%
Trading				
RYMCO	3.25	0.00%	0.00%	
Industrial				
Holcim	14.57	0.07%	0.76%	16.38%
Ciments Blancs	2.61	1.95%	16.00%	

MSCI LEBANON INDEX - 30 DAYS CHART

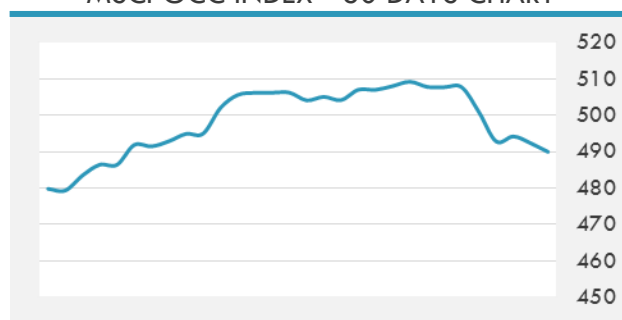
LEBANESE USD SOVEREIGN CURVE


- Bank Audi estimated that Lebanon will generate over \$200 billion in net revenues from the promising offshore gas exploration, an income which would drastically reduce the public debt and stimulate the economy. This estimation was part of Bank Audi's fourth quarter report on Lebanon that covered the main economic activities for the entire 2017.
- A significant number of expansion and redevelopment projects populate the 10 highest value construction projects in Saudi Arabia, according to the latest 'Top Projects in Saudi Arabia' report prepared by the BNC Network for The Big 5 Saudi.

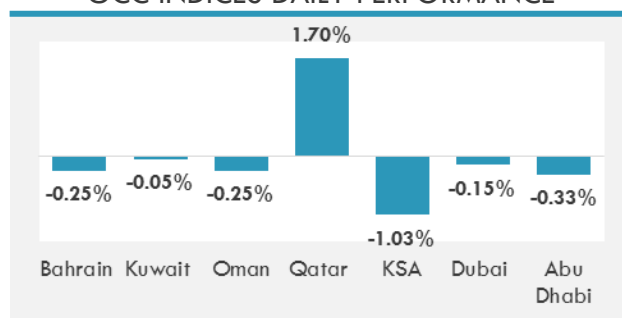
Source: Daily Star, Gulf Base

GCC EQUITY INDICES

	Last Price	Daily %	YTD %
Bahrain	1333.02	-0.25%	0.85%
Kuwait	6654.55	-0.05%	4.62%
Oman	4994.02	-0.25%	-1.78%
Qatar	9044.82	1.70%	6.10%
KSA	7327.15	-1.03%	2.44%
Dubai	3320.58	-0.15%	-1.42%
Abu Dhabi	4584.41	-0.33%	4.69%

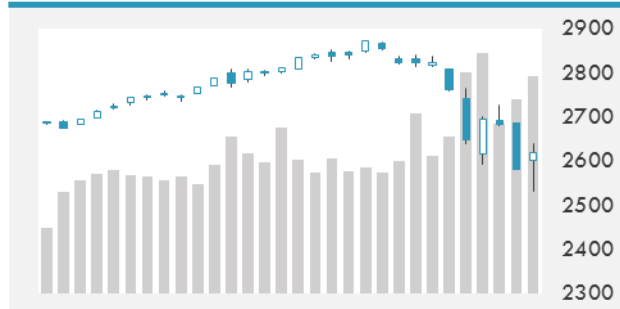
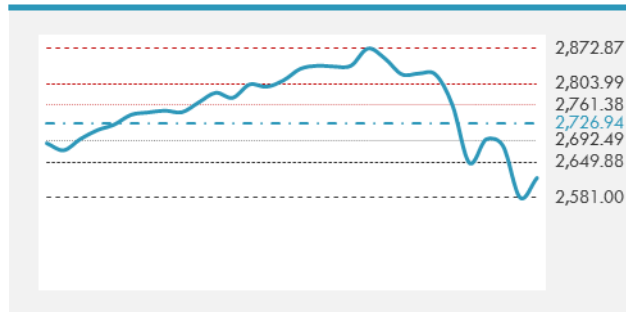
MSCI GCC INDEX - 30 DAYS CHART

LOCAL/GCC FOREIGN EXCHANGE

	Cross	Last Price
Lebanese Pound Spot	USD/LBP	1514
Bahraini Dinar Spot	USD/BHD	0.37702
Kuwaiti Dinar Spot	USD/KWD	0.3002
Omani Rial Spot	USD/OMR	0.38499
Qatari Riyal Spot	USD/QAR	3.6544
Saudi Riyal Spot	USD/SAR	3.7503
UAE Dirham Spot	USD/AED	3.673

GCC INDICES DAILY PERFORMANCE


UNITED STATES EQUITY MARKET INDICES

	Last Price	Daily %	YTD %	Δ10D Vol
Major Indices				
Dow Jones	24190.9	1.38%	-2.14%	2.55%
S&P 500	2619.55	1.49%	-2.02%	3.21%
Nasdaq	6874.491	1.44%	-0.42%	2.90%
Sectors Indices				
Discretionary	802.49	0.70%	2.19%	1.12%
Staples	552.74	0.20%	-5.90%	0.84%
Energy	491.04	-0.35%	-7.94%	0.79%
Financials	458.95	1.92%	-1.08%	3.41%
Healthcare	949.09	1.46%	-0.76%	3.31%
Industrials	620.86	1.09%	-2.66%	2.01%
IT	1103.12	2.53%	-0.28%	5.15%
Materials	366.02	1.71%	-3.41%	3.69%
Telecom	155.32	1.42%	-6.47%	2.03%
Utilities	246.13	2.18%	-7.94%	6.46%
Real Estate	186.19	2.40%	-8.67%	5.79%

S&P 500 INDEX - 30 DAYS CHART

S&P 500 SUPPORT & RESISTANCE


- U.S. stocks bounced back on Friday to minimize this week's rout in what was the biggest five-day plunge in two years.
- European equities rally after a two-week selloff that reversed annual gains and sent Germany's benchmark into a correction.
- Asian stocks rose Monday, taking a break from the global rout that has gripped investors since late January, after U.S. stocks gained on Friday and S&P 500 Index futures surged in Asia trading hours. Japan is closed for a holiday today.

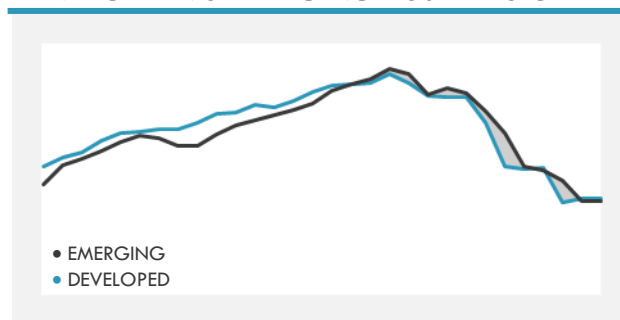
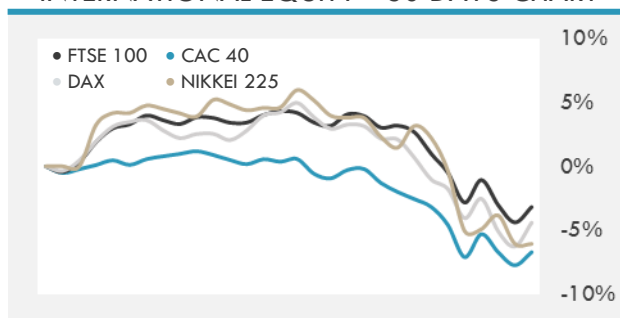
Source: Bloomberg

INTERNATIONAL MARKETS INDICES

	Last Price	Daily %	YTD %	Δ10D Vol
World	1224.55	0.04%	-2.35%	0.83%
Developed	2050.9	0.29%	-2.50%	1.22%
Emerging	1142.85	-1.74%	-1.35%	0.00%
Frontier	2971.05	-1.08%	-0.58%	0.20%
Europe	124.29	-1.47%	-5.42%	-0.03%
Latin America	2952.28	-0.94%	4.39%	-0.16%
Asia Pacific	170.54	-1.67%	-1.88%	-0.03%

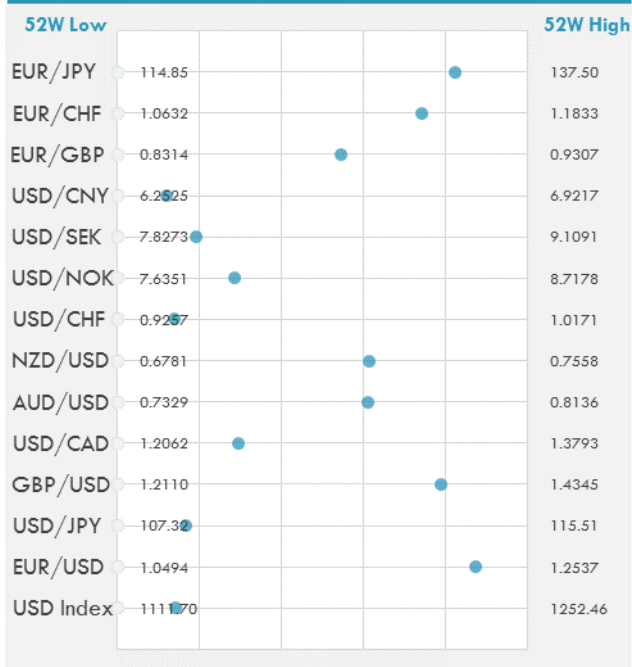
INTERNATIONAL EQUITY INDICES

	Last Price	Daily %	YTD %	Δ10D Vol
EuroStoxx 50	3325.99	-1.52%	-5.08%	-0.24%
FTSE 100	7092.43	-1.09%	-7.74%	-0.57%
CAC 40	5079.21	-1.41%	-4.39%	-0.16%
DAX	12107.48	-1.25%	-6.27%	-0.56%
Swiss SMI	8682	-0.93%	-7.46%	-0.08%
Nikkei 225	21382.62	0.00%	-6.07%	0.47%
CSI 300	3890.1	1.29%	-3.49%	6.92%

DEVELOPED VS EMERGING - 30 DAYS CHART

INTERNATIONAL EQUITY - 30 DAYS CHART


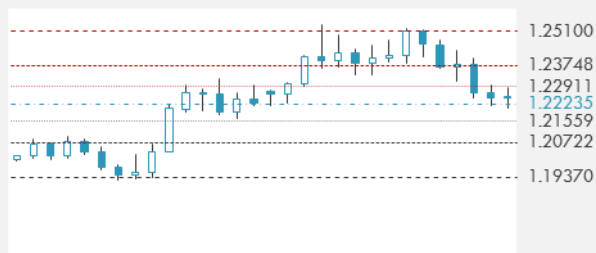
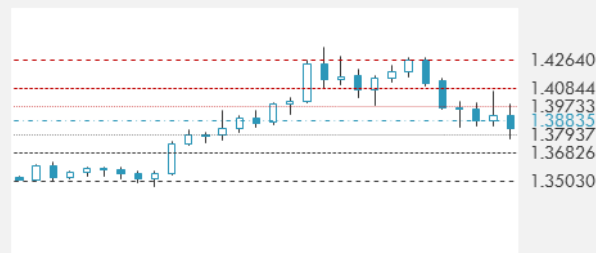
FOREIGN EXCHANGE MARKET

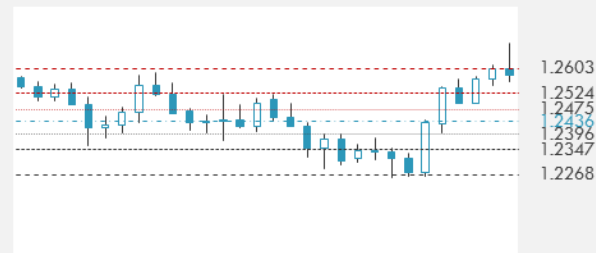
	Last Price	Daily %	Δ10D	Vol 25ΔRR
Major USD Cross Rate				
USD Index	1131.44	-0.23%	0.32%	-
EUR/USD	1.2278	0.21%	0.05%	-0.648
USD/JPY	108.69	-0.10%	-0.25%	-2.180
GBP/USD	1.3869	0.30%	-0.42%	-0.605
USD/CAD	1.257	-0.09%	0.34%	0.398
AUD/USD	0.782	0.09%	1.46%	-0.968
NZD/USD	0.7257	0.03%	0.44%	-0.908
USD/CHF	0.9383	-0.03%	-0.57%	-0.848
USD/NOK	7.9447	-0.22%	0.35%	0.705
USD/SEK	8.0723	-0.10%	0.86%	0.588
USD/CNY	6.3318	0.45%	0.68%	0.145
Major EUR Cross Rate				
EUR/GBP	0.88535	-0.12%	0.59%	0.225
EUR/CHF	1.1521	0.08%	0.53%	-0.783
EUR/JPY	133.46	0.12%	0.10%	-2.360

DISTANCE FROM 52 WEEKS LOW/HIGH


- The dollar weakens for a second day on concern President Donald Trump's budget proposal to be released Monday will drop a longstanding Republican Party goal to balance the budget in 10 years.
- The pound rose against the dollar as U.K. Prime Minister Theresa May embarks this week on a push to bring her divided Cabinet together and flesh out a Brexit strategy.
- India's rupee advances as risk appetite for emerging-market assets shows improvement after U.S. equities rose Friday.

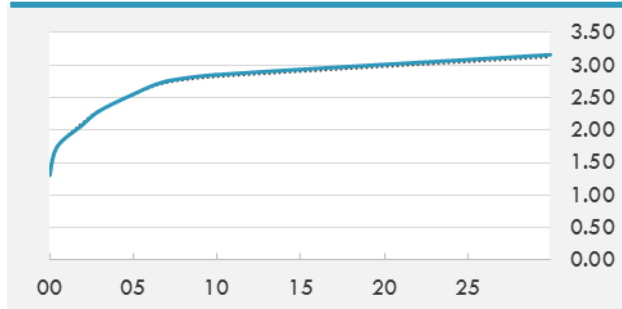
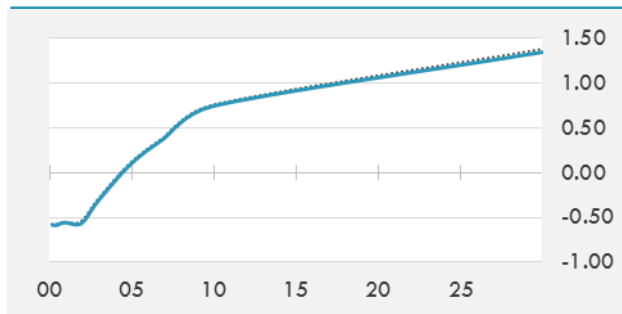
Source: Bloomberg

EUR/USD 30 DAYS SUPPORT & RESISTANCE

GBP/USD 30 DAYS SUPPORT & RESISTANCE

USD/JPY 30 DAYS SUPPORT & RESISTANCE

USD/CAD 30 DAYS SUPPORT & RESISTANCE


GLOBAL BOND INDICES

	Yield	ΔYield (in Bps)
Benchmark Indices		
US 10 Years Benchmark	2.824	-0.012
EU 10 Years Benchmark	0.762	0.017
UK 10 Years Benchmark	1.57	-0.047
Sovereign Bonds		
US Treasury Bond	2.538	0.007
Eurozone Sovereign Bond	0	0
Japan Sovereign Bond	-0.06	0.004
Corporate Bonds		
US Corporate TR	3.580	0.023
US High Yield Bond TR	6.161	0.138
EUR Aggregate Corporate TR	0.865	0.027
EUR High Yield TR	3.423	0.030
USD Emerging Market IG & HY	4.856	0.064

US TREASURIES YIELD CURVE

EUR GENERIC YIELD CURVE


- This week's U.S. inflation report is likely to mark the end of the Treasuries selloff and the five-year sector could lead the rebound.
- Core bonds open lower as U.S. stocks continue to bounce in Asian hours, weighing on Treasury futures.
- Japan holiday curbs activity. Treasury futures drift lower on gaining S&P E-mini futures. Aussie curve drifts steeper with latest RBA reinforcing consensus steepener view.

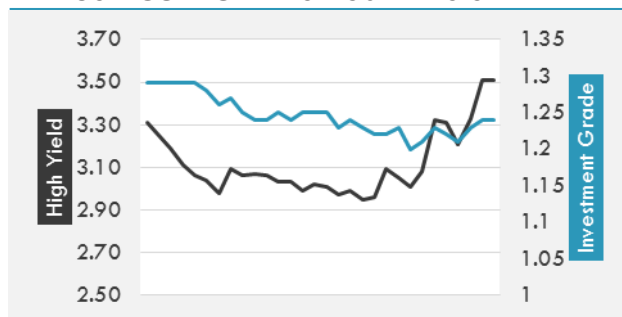
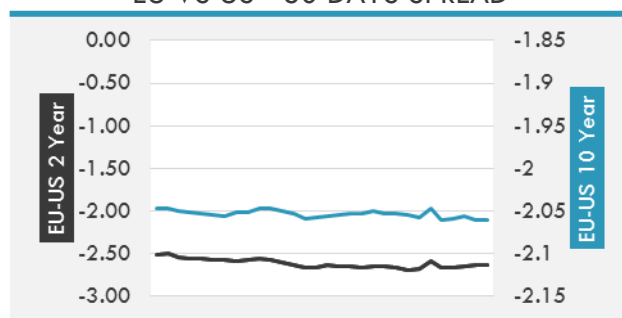
Source: Bloomberg

OVERNIGHT RATES - SWAPS

	Yield	ΔYield (in Bps)
3M USD LIBOR	1.8105	0.0106
3M EUR EURIBOR	-0.329	0.0000
3M GBP LIBOR	0.53017	0.0015
3Y USD SWAP	2.4776	-0.0159
5Y USD SWAP	2.6277	-0.0212
10Y USD SWAP	2.8398	-0.0150
30Y USD SWAP	2.9515	-0.0071

FIXED INCOME SPREADS

	Spread	ΔSpread (in Bps)
USD 3M vs 10Y Spread	1.27444	(0.0144)
USD 2Y vs 10Y Spread	0.71858	0.0083
USD IG Spread	1.23	0.0200
USD HY Spread	3.33	0.1200
EU vs US 10Y Spread	-2.0622	0.0288
EU vs US 2Y Spread	-2.6533	0.0139
EM vs Benchmark Spread	209.9	5.000

USD CORPORATES - 30 DAYS SPREAD

EU VS US - 30 DAYS SPREAD


GLOBAL COMMODITIES MARKET

	Last Price	Daily %
Commodity Index	85.64	-1.57%

Energy

WTI Crude Future	59.2	-3.19%
Brent Crude Future	62.79	-3.12%
NYMEX Gasoline	170.02	-3.67%
NYMEX Heat Oil	185.51	-3.45%
ICE Gasoil	555.75	-2.59%
NYMEX Natural Gas	2.584	-4.19%

Precious Metals

Gold Spot \$/Oz	1316.65	-0.16%
Silver Spot \$/Oz	16.365	-0.34%
Platinum Spot \$/Oz	965.42	-0.74%
Palladium Spot \$/Oz	977.66	1.37%
Gold Future	1315.7	-0.25%
Silver Future	16.139	-1.24%
Platinum Future	961.5	-1.73%
Palladium Future	963.35	0.12%

Base Metals

LME Aluminum	2123	-2.17%
LME Copper	6755	-1.31%
LME Zinc	3385	-1.07%
LME Nickel	12970	-1.29%
LME Lead	2534	0.38%
LME Tin	21025	-1.41%

Agricultural

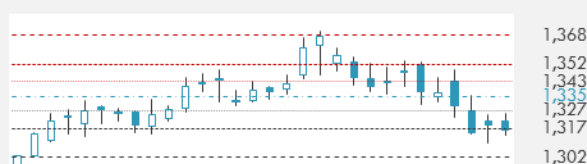
Corn CBT	362	-1.03%
Wheat CBT	449	-1.59%
Soybeans CBT	983	-0.48%
Bean Meal CBT	346.6	0.43%
Rough Rice CBT	12.325	-0.96%
MDE Palm Oil	2514	0.76%
Soybean CBT	32.15	-0.77%
Coffee ICE	123.8	-0.88%
Sugar #11 ICE	13.55	-0.29%
Cotton #2 ICE	77.63	0.09%
Cocoa ICE	2060	0.00%
Ethanol CME	1.403	-0.85%
Lumber CME	483	-1.81%
Orange Juice ICE	147.6	0.07%
Live Cattle CME	123.625	-0.08%
Feeder Cattle CME	146.2	-0.71%
Lean Hogs CME	68.85	-0.86%

COMMODITY INDEX SUPPORT & RESISTANCE

WTI OIL 30 DAYS SUPPORT & RESISTANCE


- While oil is rebounding from its biggest weekly decline in two years, gains are still being limited by concern over a resurgence in U.S. shale output.

Source: Bloomberg

GOLD 30 DAYS SUPPORT & RESISTANCE

SILVER 30 DAYS SUPPORT & RESISTANCE

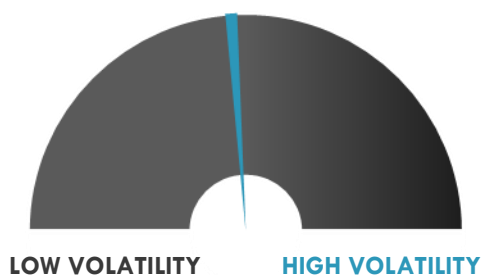

TOP 10 WINNERS

	Ticker	Last Price	Daily %
S&P 500 Stocks			
EXPEDIA INC	EXPE	104	-15.47
TRIPADVISOR INC	TRIP	38.31	-4.34
CHIPOTLE MEXICAN	CMG	255.46	-3.97
BAKER HUGHES A	BHGE	26.5	-3.64
CBOE GLOBAL MARK	CBOE	107.11	-3.63
SCHLUMBERGER LTD	SLB	65.19	-3.28
MOHAWK INDS	MHK	249.46	-2.77
HOLOGIC INC	HOLX	37.75	-2.71
UNITED PARCEL-B	UPS	106.39	-2.64
AMERISOURCEBERGE	ABC	89.19	-2.58

TOP 10 LOSERS

	Ticker	Last Price	Daily %
S&P 500 Stocks			
MATTEL INC	MAT	17.27	7.94
NVIDIA CORP	NVDA	232.08	6.69
DOLLAR TREE INC	DLTR	107.62	5.95
DXC TECHNOLOGY C	DXC	96.99	5.52
AMEREN CORP	AEE	55.42	5.38
APPLIED MATERIAL	AMAT	48.08	5.09
NIKE INC -CL B	NKE	65.49	4.80
FORTIVE CORP	FTV	72.45	4.79
UNDER ARMOUR-A	UAA	13.75	4.64
ULTA BEAUTY INC	ULTA	218.55	4.52

S&P 500 DISTRIBUTION

S&P VOLATILITY INDEX


- Tesla clarifies a statement made last week by CEO Elon Musk during the company's earnings call about disassembled automated line equipment from Germany making its way to the Gigafactory.
- Alphabet's Waymo offered to settle with Uber for \$500M earlier this week. The two came to the \$245M agreed settlement.
- Amazon hires NBC Entertainment president Jennifer Salke to run Amazon Studios. Former Amazon Studios head Roy Price left in October after a sexual harassment allegation.
- Airbus agrees to pay an €81M fine (\$99M) to end a five-year bribery investigation by German prosecutors in connection with the 2003 sale of Eurofighter jets to Austria.
- Facebook is executing a planned change in page reach measurement that focuses on view ability -- business' Page posts actually appearing on a user's screen -- bringing that into line with how it already counts ad reach.
- AT&T has closed on its \$207M acquisition of FiberTower, setting up a rollout of new millimeter wave spectrum for use in a 5G mobile launch late this year.

KEY ECONOMIC INDICATORS

Country	Event	Surv (M)	Actual	Prior	Time
China	Money Supply M2 YoY	8.20%	--	8.20%	
China	New Yuan Loans CNY	2050.0b	--	584.4b	
China	Money Supply M1 YoY	13.50%	--	11.80%	
China	Money Supply M0 YoY	4.20%	--	3.40%	
China	Aggregate Financing CNY	3150.0b	--	1140.0b	
China	Foreign Direct Investment YoY CNY	--	--	-9.20%	
Eurozone	Euro-Area Economic Outlook				9:30
France	France Economic Forecasts in Feb. 2018				9:40
France	France to Sell Up to EUR3.3 Bln 91-Day Bills				15:50
France	France to Sell Up to EUR1.5 Bln 140-Day Bills				15:50
France	France to Sell Up to EUR1.3 Bln 350-Day Bills				15:50
Germany	German '18 Outlook Higher on Investment				9:35
Germany	Germany to Sell EUR3 Bln 182-Day Bills				12:30
Italy	Italy Outlook Edges Up Amid Election				9:45
Italy	Italy to Sell 365-Day Bills				12:00
Russia	Budget Balance YTD	100.0b	--	-1336.4b	
United Kingdom	Vlieghe Speaks at Resolution Foundation				11:30
United States	Monthly Budget Statement	\$51.0b	--	\$51.3b	21:00
United States	U.S. to Sell USD48 Bln 3-Month Bills				18:30
United States	U.S. to Sell USD42 Bln 6-Month Bills				18:30

Source: Bloomberg

Banque BEMO sal
Head Office - Private and Corporate Banking

 96 Pasteur Building, Pasteur Street, Medawar Area, P.O. Box: 16-6353, Beirut - Lebanon
 Tel: + 961 1 568 250 Fax: + 961 1 568 266

Wealth & Investment Management research@bemobank.com

 Beirut Central District Riad El Solh Square, Esseily Building Bloc A, 7th Floor Beirut - Lebanon
 Tel: + 961 1 992 600 Fax: + 961 1 983 368
www.bemobank.com
Disclaimer:

This report is published for information purposes only. The information herein has been compiled from, or based upon sources considered to be reliable (Bloomberg, SeekingAlpha, DailyStar...), but we do not guarantee or assume responsibility for its completeness and accuracy. This document should not be construed as a solicitation to take part in any investment, or as constituting any representation or warranty on our part. This report is not to be relied upon in substitution for the exercise of specialists.

We may not have taken any steps to ensure that the securities referred to in this report are suitable for any particular investor. The investments and services contained or referred to herein are not purported to be exhaustive, any person considering an investment should seek specialist advice on the suitability of an investment.

Nothing in this report constitutes investment, legal, accounting or tax advice, or a representation that any investment or strategy is suitable or appropriate to your individual circumstances, or otherwise constitutes a personal recommendation. Clients understand that it is their responsibility to seek legal and/or tax advice regarding the legal and tax consequences of their investment transactions. The consequences of any action taken on the basis of information contained herein are solely the responsibility of the recipient.

Investment instruments are subject to risk, including possible loss of principal amount invested. Past performance should not be taken as an indication or guarantee of future performance, and no representation or warranty, express or implied, is made regarding future performance. The value of securities and financial instruments is subject to exchange rate fluctuation that may have a positive or adverse effect on the price or income of such securities or financial instruments. Some investments mentioned in this report may have a high level of volatility. High volatility investments may experience sudden and large falls in their value causing losses when that investment is realized. Some investments may not be readily realizable and it may be difficult to sell or realize those investments, similarly it may prove difficult to obtain reliable information about the value, or risks, to which such an investment is exposed.

This report may provide the addresses of websites or references. We have not reviewed any such site and takes no responsibility for the content contained therein. Such address or reference is provided solely for convenience and information. Accessing such website through this report shall be at the recipients own risk.