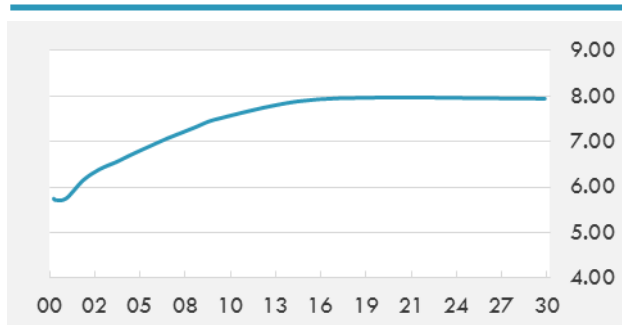


BEIRUT STOCK EXCHANGE

	Last	Daily %	YTD %	Dividend %
MSCI Lebanon	664.1	-2.16%	1.51%	
Development and Reconstruction				
Solidere A	8.3	-1.78%	3.62%	
Solidere B	8.22	-1.20%	3.01%	
Banking				
Audi Listed	5.89	-0.17%	2.43%	8.45%
BLC Listed	0.93	0.00%	0.00%	
BOB Listed	18.8	0.00%	0.00%	3.52%
Byblos Listed	1.61	-0.62%	0.62%	8.17%
BEMO Listed	1.17	0.00%	-10.00%	4.52%
BLOM Listed	11.62	-3.17%	-0.17%	8.25%
Trading				
RYMCO	3.25	0.00%	0.00%	
Industrial				
Holcim	14.57	0.00%	0.76%	16.38%
Ciments Blancs	2.61	0.00%	16.00%	

MSCI LEBANON INDEX - 30 DAYS CHART

LEBANESE USD SOVEREIGN CURVE


- Saudi startups would have a wide range of financing options as funding volumes in GCC have increased steadily, with a lot of fresh money flowing into seed and early-stage companies.
- The growth momentum in Bahrain's economy continues to exceed expectations, with the annual pace of growth in the non-oil sector reaching 4.8 per cent in the first nine months of 2017.

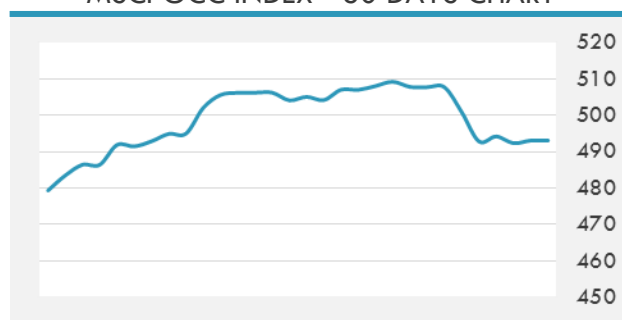
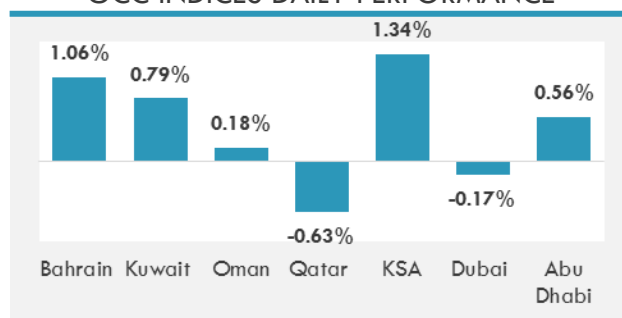
Source: Daily Star, Gulf Base

GCC EQUITY INDICES

	Last Price	Daily %	YTD %
Bahrain	1347.12	1.06%	1.64%
Kuwait	6707.45	0.79%	4.65%
Oman	5002.87	0.18%	-1.85%
Qatar	8987.51	-0.63%	5.45%
KSA	7425.57	1.34%	2.89%
Dubai	3314.93	-0.17%	-0.68%
Abu Dhabi	4609.91	0.56%	4.65%

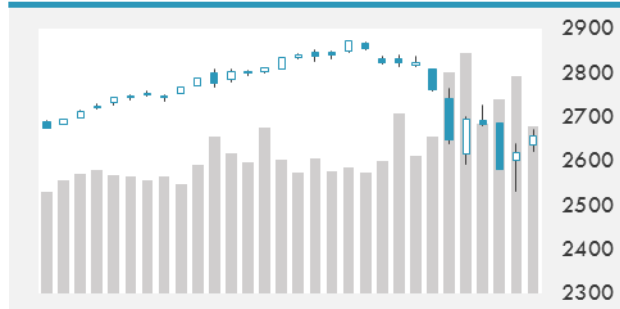
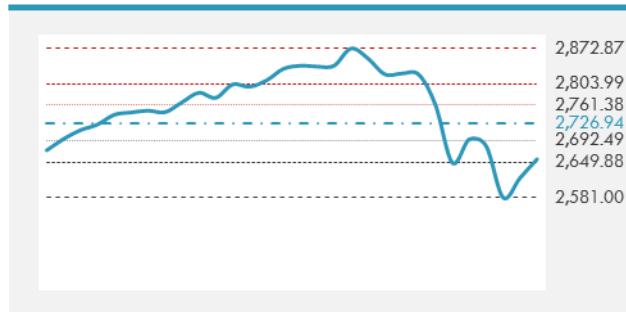
LOCAL/GCC FOREIGN EXCHANGE

	Cross	Last Price
Lebanese Pound Spot	USD/LBP	1514.5
Bahraini Dinar Spot	USD/BHD	0.37702
Kuwaiti Dinar Spot	USD/KWD	0.30008
Omani Rial Spot	USD/OMR	0.385
Qatari Riyal Spot	USD/QAR	3.6525
Saudi Riyal Spot	USD/SAR	3.7503
UAE Dirham Spot	USD/AED	3.673

MSCI GCC INDEX - 30 DAYS CHART

GCC INDICES DAILY PERFORMANCE


UNITED STATES EQUITY MARKET INDICES

	Last Price	Daily %	YTD %	Δ10D Vol
Major Indices				
Dow Jones	24601.27	1.70%	-0.48%	2.39%
S&P 500	2656	1.39%	-0.66%	2.20%
Nasdaq	6981.964	1.56%	1.14%	2.52%
Sectors Indices				
Discretionary	813.29	1.35%	3.56%	2.10%
Staples	558.65	1.07%	-4.89%	2.42%
Energy	499.15	1.65%	-6.42%	3.87%
Financials	465.27	1.38%	0.29%	1.70%
Healthcare	958.25	0.97%	0.20%	1.26%
Industrials	630.63	1.57%	-1.13%	2.44%
IT	1122.89	1.79%	1.51%	2.29%
Materials	373.67	2.09%	-1.39%	3.48%
Telecom	156.61	0.83%	-5.70%	0.71%
Utilities	248.09	0.80%	-7.21%	0.80%
Real Estate	186.66	0.25%	-8.44%	0.35%

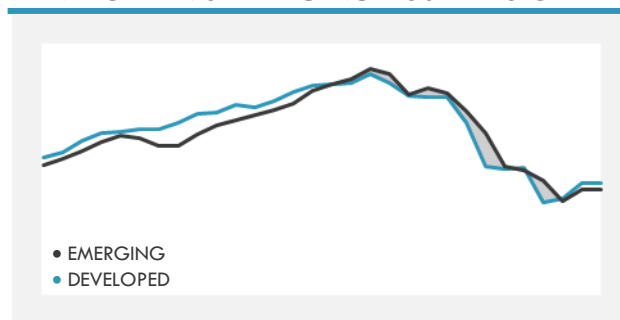
S&P 500 INDEX - 30 DAYS CHART

S&P 500 SUPPORT & RESISTANCE


- U.S. stocks rose for a 2nd day after the S&P 500's Friday bounce off its 200-DMA spurred optimism that the two-week selloff may be close to an end. Morgan Stanley chief U.S. equity strategist Michael Wilson reversed his week-old cautious call, joining peers at Goldman and JPMorgan who also told clients to buy the dip.
- A two-week rout in European stocks came to a halt as the main global indexes traded in the green amid signs markets are stabilizing after a selloff.

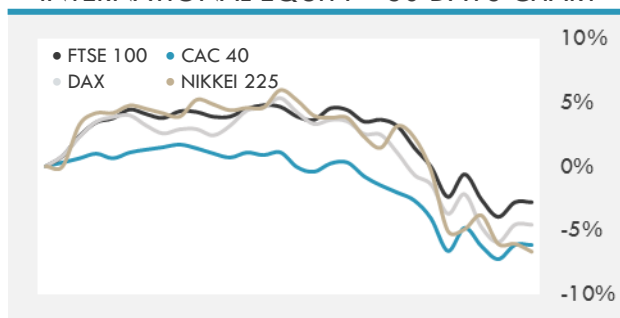
Source: Bloomberg

INTERNATIONAL MARKETS INDICES

	Last Price	Daily %	YTD %	Δ10D Vol
World	1239.04	1.18%	-1.20%	3.23%
Developed	2075.91	1.22%	-1.31%	3.00%
Emerging	1153.37	0.92%	-0.44%	3.09%
Frontier	2982.08	0.37%	-0.21%	1.15%
Europe	125.78	1.20%	-4.28%	2.96%
Latin America	2961.06	0.30%	4.70%	0.88%
Asia Pacific	171.29	0.44%	-1.45%	1.41%

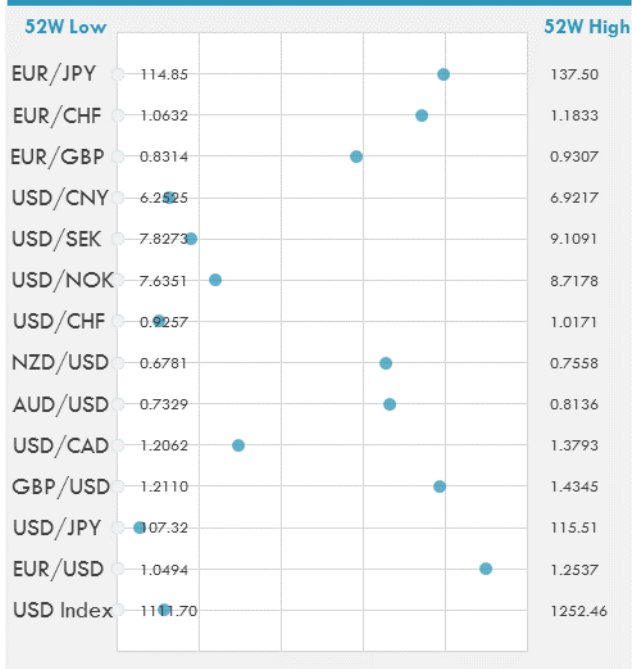
DEVELOPED VS EMERGING - 30 DAYS CHART

INTERNATIONAL EQUITY INDICES

	Last Price	Daily %	YTD %	Δ10D Vol
EuroStoxx 50	3368.25	1.27%	-3.87%	3.37%
FTSE 100	7177.06	1.19%	-6.64%	2.77%
CAC 40	5140.06	1.20%	-3.25%	2.95%
DAX	12282.77	1.45%	-4.91%	4.06%
Swiss SMI	8822.18	1.61%	-5.97%	4.04%
Nikkei 225	21244.68	-0.65%	-6.68%	0.00%
CSI 300	3935.63	1.17%	-2.36%	3.29%

INTERNATIONAL EQUITY - 30 DAYS CHART


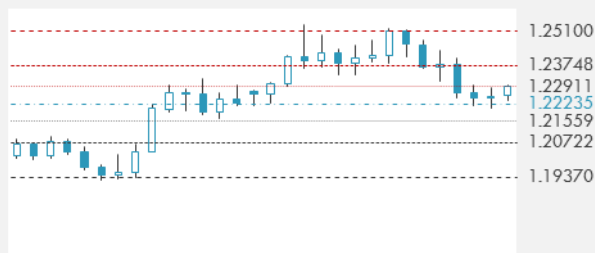
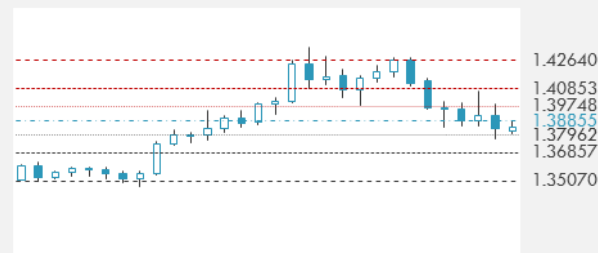
FOREIGN EXCHANGE MARKET

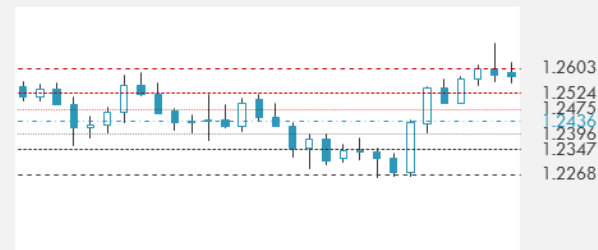
	Last Price	Daily %	Δ10D	Vol 25	ΔRR
Major USD Cross Rate					
USD Index	1127.63	-0.32%	0.23%	-	
EUR/USD	1.2326	0.28%	0.19%	-0.638	
USD/JPY	107.77	-0.82%	0.64%	-1.795	
GBP/USD	1.3865	0.20%	-0.20%	-0.535	
USD/CAD	1.2574	-0.02%	-0.16%	0.368	
AUD/USD	0.7865	0.04%	0.15%	-0.735	
NZD/USD	0.7289	0.34%	-0.14%	-0.723	
USD/CHF	0.9348	-0.48%	0.19%	-0.795	
USD/NOK	7.8914	-0.30%	0.16%	0.780	
USD/SEK	8.0552	-0.11%	-0.03%	0.555	
USD/CNY	6.3362	0.14%	-0.91%	0.015	
Major EUR Cross Rate					
EUR/GBP	0.88901	0.07%	-0.36%	0.253	
EUR/CHF	1.15225	-0.19%	-0.07%	-0.838	
EUR/JPY	132.83	-0.55%	-0.30%	-1.878	

DISTANCE FROM 52 WEEKS LOW/HIGH


- The yen rose against all of its Group-of-10 peers as Japanese stocks erased intraday gains, reviving demand for safer assets.
- Brexit may be back on the agenda for the pound, but that doesn't mean the currency will plummet, according to ING Groep NV.
- Divergence in the euro between spot and options remains strong as the currency forming a short-term bottom above the \$1.22 handle is doing little for now to convince traders to bid for upside exposure through calls.

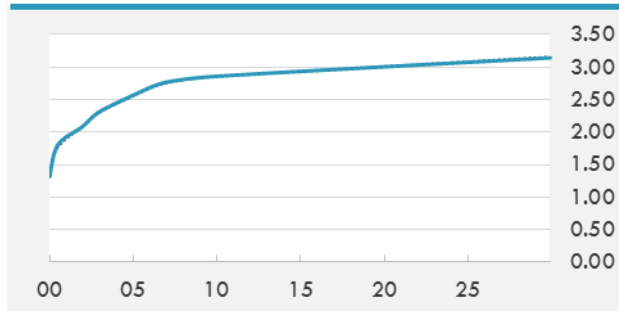
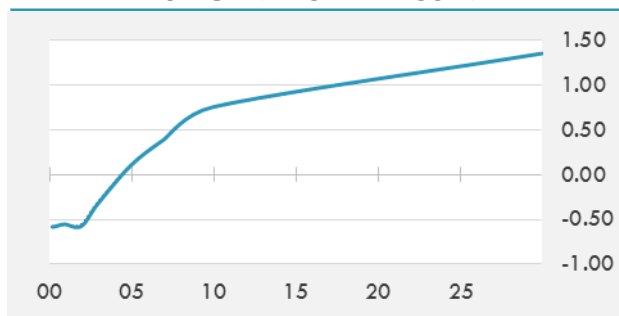
Source: Bloomberg

EUR/USD 30 DAYS SUPPORT & RESISTANCE

GBP/USD 30 DAYS SUPPORT & RESISTANCE

USD/JPY 30 DAYS SUPPORT & RESISTANCE

USD/CAD 30 DAYS SUPPORT & RESISTANCE


GLOBAL BOND INDICES

	Yield	ΔYield (in Bps)
Benchmark Indices		
US 10 Years Benchmark	2.8585	0.035
EU 10 Years Benchmark	0.757	-0.005
UK 10 Years Benchmark	1.601	0.031
Sovereign Bonds		
US Treasury Bond	2.53	-0.008
Eurozone Sovereign Bond	0	0
Japan Sovereign Bond	-0.068	-0.008
Corporate Bonds		
US Corporate TR	3.613	0.033
US High Yield Bond TR	6.290	0.129
EUR Aggregate Corporate TR	0.865	0.001
EUR High Yield TR	3.502	0.079
USD Emerging Market IG & HY	4.884	0.028

US TREASURIES YIELD CURVE

EUR GENERIC YIELD CURVE


- Core bonds edge higher from the open as USD/JPY breaks below 108. Treasuries flat-lined in Asia hours, with volumes across futures on all across major assets subdued. BTP auction kicks off busy week of issuance.
- Fixed-income bears who are champing at the bit for euro-area inflation will have to look elsewhere for market spoilers, according to Citigroup Inc.

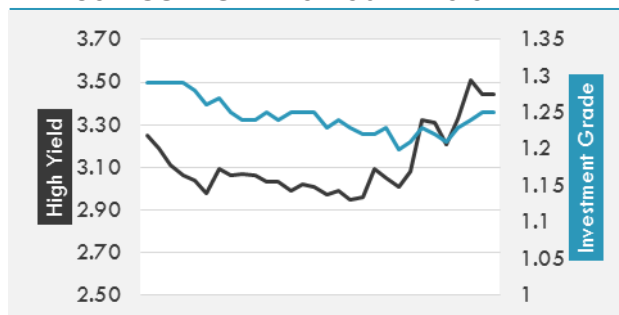
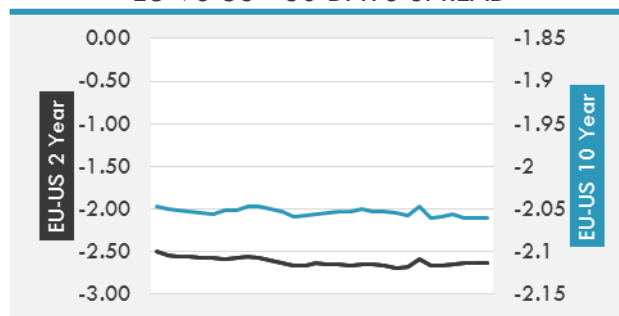
Source: Bloomberg

OVERNIGHT RATES - SWAPS

	Yield	ΔYield (in Bps)
3M USD LIBOR	1.82	0.0095
3M EUR EURIBOR	-0.329	0.0000
3M GBP LIBOR	0.5352	0.0050
3Y USD SWAP	2.4951	0.0175
5Y USD SWAP	2.6555	0.0278
10Y USD SWAP	2.8716	0.0318
30Y USD SWAP	2.9775	0.0260

FIXED INCOME SPREADS

	Spread	ΔSpread (in Bps)
USD 3M vs 10Y Spread	1.27598	0.0015
USD 2Y vs 10Y Spread	0.77907	0.0605
USD IG Spread	1.25	0.0200
USD HY Spread	3.44	0.1100
EU vs US 10Y Spread	-2.1065	(0.0443)
EU vs US 2Y Spread	-2.6401	0.0132
EM vs Benchmark Spread	210.6	0.700

USD CORPORATES - 30 DAYS SPREAD

EU VS US - 30 DAYS SPREAD


GLOBAL COMMODITIES MARKET

	Last Price	Daily %
Commodity Index	86.33	0.80%

Energy

WTI Crude Future	59.29	0.15%
Brent Crude Future	62.59	-0.32%
NYMEX Gasoline	167.85	-1.28%
NYMEX Heat Oil	183.89	-0.87%
ICE Gasoil	555.75	0.00%
NYMEX Natural Gas	2.552	-1.24%

Precious Metals

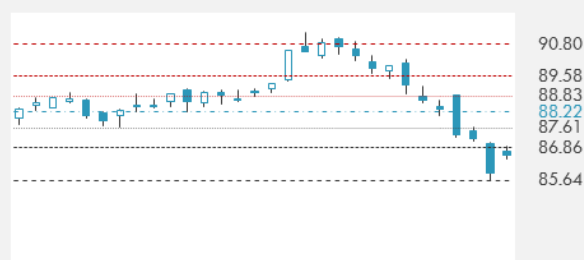
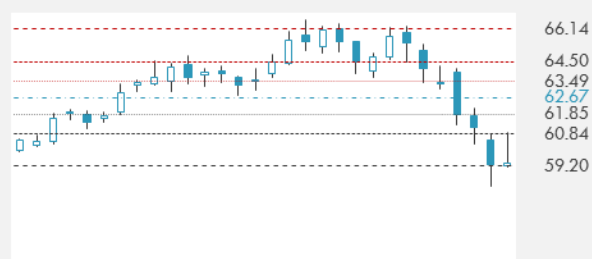
Gold Spot \$/Oz	1322.7	0.46%
Silver Spot \$/Oz	16.5465	1.11%
Platinum Spot \$/Oz	970.8	0.56%
Palladium Spot \$/Oz	985.15	0.77%
Gold Future	1326.4	0.81%
Silver Future	16.57	2.67%
Platinum Future	972.8	1.18%
Palladium Future	976.15	1.33%

Base Metals

LME Aluminum	2125	0.09%
LME Copper	6831	1.13%
LME Zinc	3383	-0.07%
LME Nickel	13100	1.00%
LME Lead	2516	-0.71%
LME Tin	21095	0.33%

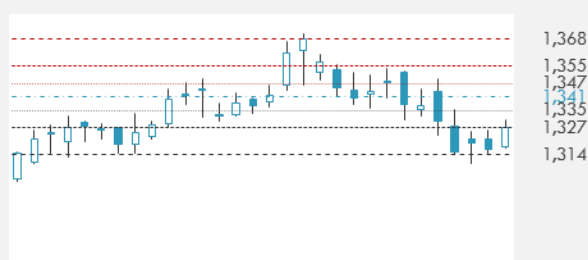
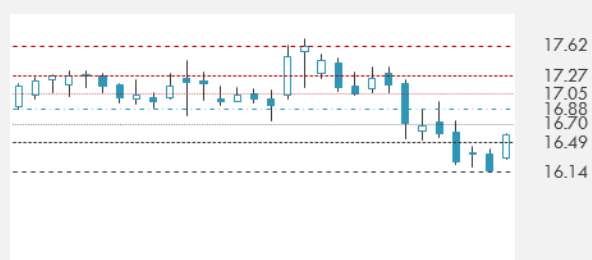
Agricultural

Corn CBT	367	1.38%
Wheat CBT	476	3.25%
Soybeans CBT	1001.75	1.91%
Bean Meal CBT	360.4	3.98%
Rough Rice CBT	12.39	0.53%
MDE Palm Oil	2543	1.15%
Soybean CBT	32.05	-0.31%
Coffee ICE	123.5	-0.24%
Sugar #11 ICE	13.61	0.44%
Cotton #2 ICE	77.45	-0.23%
Cocoa ICE	2007	-2.57%
Ethanol CME	1.417	1.00%
Lumber CME	485.5	0.52%
Orange Juice ICE	148.8	0.54%
Live Cattle CME	125	1.11%
Feeder Cattle CME	147.675	1.01%
Lean Hogs CME	70.525	2.43%

COMMODITY INDEX SUPPORT & RESISTANCE

WTI OIL 30 DAYS SUPPORT & RESISTANCE


- The prospect of a U.S. shale resurgence is keeping oil from being fully swept up in a wave of relief spreading across risk assets.
- Gold advances for second day as dollar retreats, with signs equity markets starting to stabilize following last week's selloff.

Source: Bloomberg

GOLD 30 DAYS SUPPORT & RESISTANCE

SILVER 30 DAYS SUPPORT & RESISTANCE


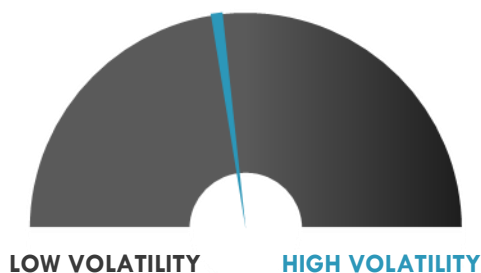
TOP 10 WINNERS

	Ticker	Last Price	Daily %
S&P 500 Stocks			
ULTA BEAUTY INC	ULTA	209.48	-4.15
DOLLAR GENERAL C	DG	95.09	-3.23
GAP INC/THE	GPS	31.42	-2.69
DOLLAR TREE INC	DLTR	104.74	-2.68
VENTAS INC	VTR	50.46	-2.19
WELLTOWER INC	HCN	54.27	-0.62
WYNN RESORTS LTD	WYNN	162.92	-1.99
SCANA CORP	SCG	35.66	-1.76
NVIDIA CORP	NVDA	228.03	-1.75
KROGER CO	KR	27.2	-1.66

TOP 10 LOSERS

	Ticker	Last Price	Daily %
S&P 500 Stocks			
CSRA INC	CSRA	40.39	31.05
ALEXION PHARM	ALXN	115.43	6.29
UNDER ARMO-C	UA	13.18	5.78
MARATHON OIL	MRO	16.27	4.90
CENTURYLINK INC	CTL	16.76	4.88
HESS CORP	HES	44.14	4.80
EQT CORP	EQT	47.77	4.46
CSX CORP	CSX	53.16	4.46
MICRON TECH	MU	42.19	4.40
LAM RESEARCH	LRCX	172.95	4.27

S&P 500 DISTRIBUTION

S&P VOLATILITY INDEX


- Amazon plans to become an AI chipmaker, according to The Information sources. The chips would let Alexa devices respond faster to commands and are in development using tech brought in with the \$350M acquisition of Israeli chipmaker Annapurna Labs three years ago. Last December's Blink acquisition brought more chip-making tech to Amazon. The startup was founded as Immedia Semiconductor and built chips for low-power video compression.
- Bloomberg offers a preview of Apple's fall software upgrade including the fact that some major features were delayed as Apple updates how the company develops new products. Key quote: "Instead of keeping engineers on a relentless annual schedule and cramming features into a single update, Apple will start focusing on the next two years of updates for its iPhone and iPad operating system, according to people familiar with the change."
- Warren Buffett's footprint is expanding to Dubai. Berkshire Hathaway Specialty Insurance has established an office in the Dubai International Financial Center after gaining a license from the regulator. The insurer also has Asian regional hubs in Hong Kong, Singapore, Malaysia and Macau as it seeks to win over new clients in the region.
- Amazon paid about \$90M to buy the maker of Blink home security cameras late last year, in a bet on the startup's energy-efficient chips, sources told Reuters.

KEY ECONOMIC INDICATORS

Country	Event	Surv (M)	Actual	Prior	Time
China	Foreign Direct Investment YoY CNY	--	--	-9.20%	
Italy	Mattis Attends Defense Ministers Meeting				1:00
Japan	PPI YoY	2.80%	2.70%	3.10%	1:50
Japan	Machine Tool Orders YoY	--	48.80%	48.30%	8:00
Russia	Budget Balance YTD	100.0b	--	-1336.4b	
United Kingdom	CPI YoY	2.90%	--	3.00%	11:30
United Kingdom	CPI MoM	-0.60%	--	0.40%	11:30
United Kingdom	CPI Core YoY	2.60%	--	2.50%	11:30
United Kingdom	PPI Output NSA MoM	0.20%	--	0.40%	11:30
United Kingdom	PPI Output NSA YoY	3.00%	--	3.30%	11:30
United Kingdom	RPI MoM	-0.70%	--	0.80%	11:30
United Kingdom	RPI YoY	4.00%	--	4.10%	11:30
United Kingdom	Retail Price Index	276.2	--	278.1	11:30
United Kingdom	RPI Ex Mort Int.Payments (YoY)	4.10%	--	4.20%	11:30
United Kingdom	PPI Input NSA YoY	4.10%	--	4.90%	11:30
United Kingdom	PPI Output Core NSA YoY	2.30%	--	2.50%	11:30
United Kingdom	PPI Input NSA MoM	0.60%	--	0.10%	11:30
United Kingdom	PPI Output Core NSA MoM	0.20%	--	0.30%	11:30
United Kingdom	House Price Index YoY	4.90%	--	5.10%	11:30
United States	NFIB Small Business Optimism	105.3	--	104.9	13:00

Source: Bloomberg

Banque BEMO sal
Head Office - Private and Corporate Banking

 96 Pasteur Building, Pasteur Street, Medawar Area, P.O. Box: 16-6353, Beirut - Lebanon
 Tel: + 961 1 568 250 Fax: + 961 1 568 266

Wealth & Investment Management research@bemobank.com

 Beirut Central District Riad El Solh Square, Esseily Building Bloc A, 7th Floor Beirut - Lebanon
 Tel: + 961 1 992 600 Fax: + 961 1 983 368
www.bemobank.com
Disclaimer:

This report is published for information purposes only. The information herein has been compiled from, or based upon sources considered to be reliable (Bloomberg, SeekingAlpha, DailyStar...), but we do not guarantee or assume responsibility for its completeness and accuracy. This document should not be construed as a solicitation to take part in any investment, or as constituting any representation or warranty on our part. This report is not to be relied upon in substitution for the exercise of specialists.

We may not have taken any steps to ensure that the securities referred to in this report are suitable for any particular investor. The investments and services contained or referred to herein are not purported to be exhaustive, any person considering an investment should seek specialist advice on the suitability of an investment.

Nothing in this report constitutes investment, legal, accounting or tax advice, or a representation that any investment or strategy is suitable or appropriate to your individual circumstances, or otherwise constitutes a personal recommendation. Clients understand that it is their responsibility to seek legal and/or tax advice regarding the legal and tax consequences of their investment transactions. The consequences of any action taken on the basis of information contained herein are solely the responsibility of the recipient.

Investment instruments are subject to risk, including possible loss of principal amount invested. Past performance should not be taken as an indication or guarantee of future performance, and no representation or warranty, express or implied, is made regarding future performance. The value of securities and financial instruments is subject to exchange rate fluctuation that may have a positive or adverse effect on the price or income of such securities or financial instruments. Some investments mentioned in this report may have a high level of volatility. High volatility investments may experience sudden and large falls in their value causing losses when that investment is realized. Some investments may not be readily realizable and it may be difficult to sell or realize those investments, similarly it may prove difficult to obtain reliable information about the value, or risks, to which such an investment is exposed.

This report may provide the addresses of websites or references. We have not reviewed any such site and takes no responsibility for the content contained therein. Such address or reference is provided solely for convenience and information. Accessing such website through this report shall be at the recipients own risk.