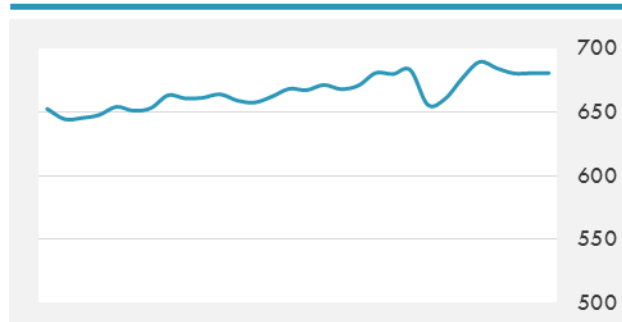
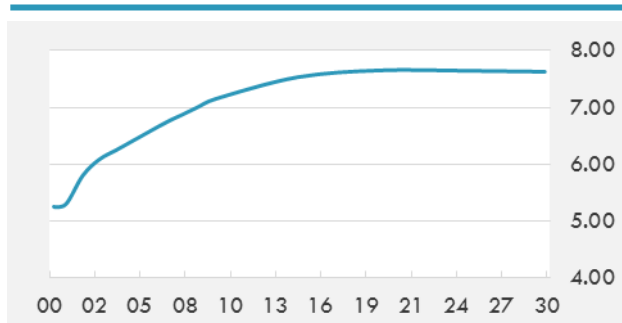


BEIRUT STOCK EXCHANGE

	Last	Daily %	YTD %	Dividend %
MSCI Lebanon	680.72	0.03%	4.05%	
Development and Reconstruction				
Solidere A	8.5	0.24%	6.12%	
Solidere B	8.45	-0.35%	5.89%	
Banking				
Audi Listed	5.9	0.00%	2.61%	8.46%
BLC Listed	0.93	0.00%	0.00%	
BOB Listed	18.8	0.00%	0.00%	3.52%
Byblos Listed	1.6	0.00%	0.00%	8.27%
BEMO Listed	1.17	0.00%	-10.00%	4.52%
BLOM Listed	12	0.00%	3.09%	8.25%
Trading				
RYMCO	3.25	0.00%	0.00%	
Industrial				
Holcim	15.48	0.00%	7.05%	15.42%
Ciments Blancs	2.56	0.00%	13.78%	

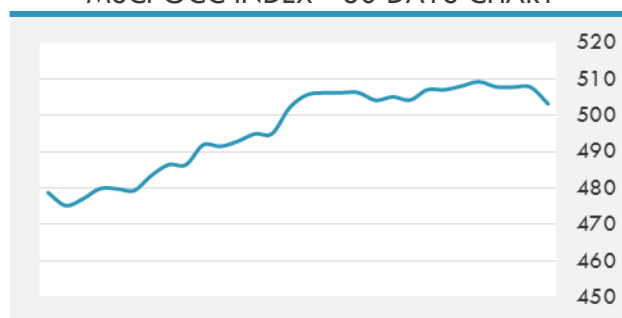
MSCI LEBANON INDEX - 30 DAYS CHART

LEBANESE USD SOVEREIGN CURVE


- Central Bank governor Riad Salameh Friday unveiled a \$1 billion incentive package aimed at stimulating the Lebanese economy. In a 20-page memo, the Banque du Liban gave a breakdown of the new incentive package, the seventh such initiative offered by Salameh in seven years. BDL will offer subsidized loans through commercial banks to housing, productive sectors, environmentally friendly projects and education. BDL said it will offer subsidized loans to the banks which meet the required conditions.

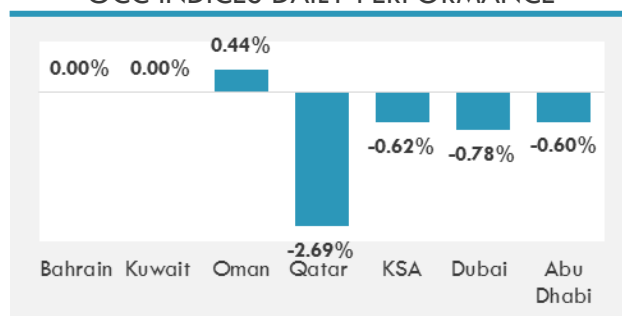
Source: Daily Star, Gulf Base

GCC EQUITY INDICES

	Last Price	Daily %	YTD %
Bahrain	1357.68	0.00%	1.72%
Kuwait	6685.23	0.00%	4.33%
Oman	5057.55	0.44%	-0.68%
Qatar	8959.3	-2.69%	5.47%
KSA	7608.33	-0.62%	5.29%
Dubai	3385.76	-0.78%	0.61%
Abu Dhabi	4584.56	-0.60%	3.93%

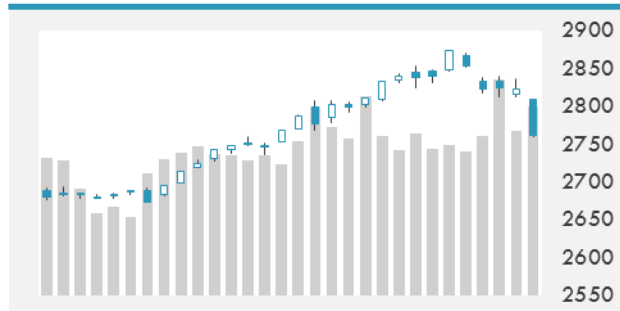
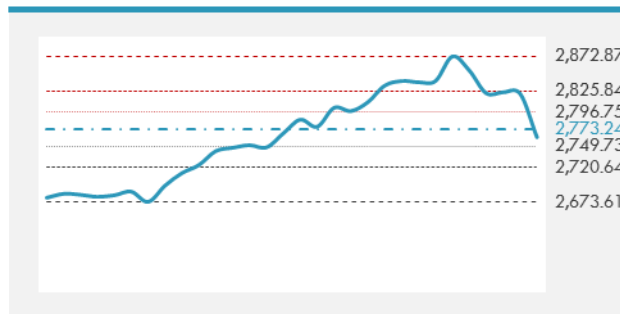
MSCI GCC INDEX - 30 DAYS CHART

LOCAL/GCC FOREIGN EXCHANGE

	Cross	Last Price
Lebanese Pound Spot	USD/LBP	1508.5
Bahraini Dinar Spot	USD/BHD	0.377
Kuwaiti Dinar Spot	USD/KWD	0.29967
Omani Rial Spot	USD/OMR	0.385
Qatari Riyal Spot	USD/QAR	3.655
Saudi Riyal Spot	USD/SAR	3.7503
UAE Dirham Spot	USD/AED	3.673

GCC INDICES DAILY PERFORMANCE


UNITED STATES EQUITY MARKET INDICES

	Last Price	Daily %	YTD %	Δ10D Vol
Major Indices				
Dow Jones	25520.96	-2.54%	3.24%	6.35%
S&P 500	2762.13	-2.12%	3.31%	4.06%
Nasdaq	7240.946	-1.96%	4.89%	2.94%
Sectors Indices				
Discretionary	841.07	-0.89%	7.10%	-0.54%
Staples	582.45	-1.77%	-0.84%	2.69%
Energy	536.43	-4.13%	0.57%	5.43%
Financials	487.21	-2.24%	5.02%	5.07%
Healthcare	1005.72	-1.34%	5.17%	0.62%
Industrials	656.51	-2.02%	2.93%	5.01%
IT	1154.3	-2.96%	4.35%	6.49%
Materials	378.94	-2.60%	0.00%	5.79%
Telecom	164.75	-2.57%	-0.80%	2.82%
Utilities	253.14	-0.72%	-5.32%	0.48%
Real Estate	194.17	-1.03%	-4.75%	0.04%

S&P 500 INDEX - 30 DAYS CHART

S&P 500 SUPPORT & RESISTANCE


- Dip buyers were few and far between in a selloff that started with U.S. bonds and has spread across international markets. The MSCI Asia Pacific Index dropped 1.8 percent Monday, heading for its steepest two-day decline since November 2016, as shares in Japan, Hong Kong and Taiwan took their lead from an overnight slump in U.S. stock-index futures.
- Euro Stoxx 50 futures fall 0.7%, DAX futures down 0.7%, signaling further losses for European stocks, which suffered their biggest weekly selloff since November 2016 last week amid rising bond yields.

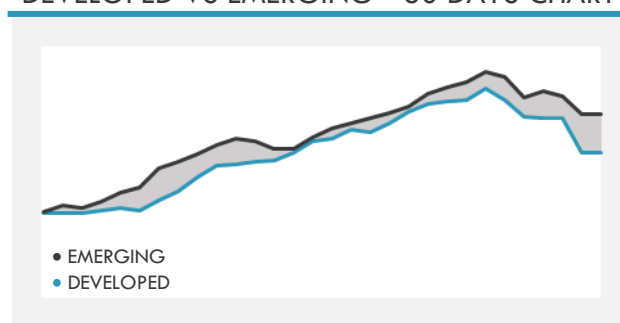
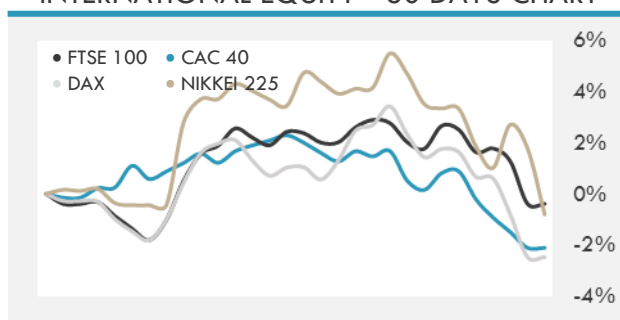
Source: Bloomberg

INTERNATIONAL MARKETS INDICES

	Last Price	Daily %	YTD %	Δ10D Vol
World	1299.17	-1.80%	3.60%	3.74%
Developed	2171.54	-1.85%	3.24%	3.96%
Emerging	1230.83	-1.43%	6.25%	2.21%
Frontier	3099	-0.96%	3.71%	0.82%
Europe	130.91	-1.36%	-0.38%	1.43%
Latin America	3139.05	-2.73%	10.99%	5.58%
Asia Pacific	182.45	-1.06%	4.97%	1.47%

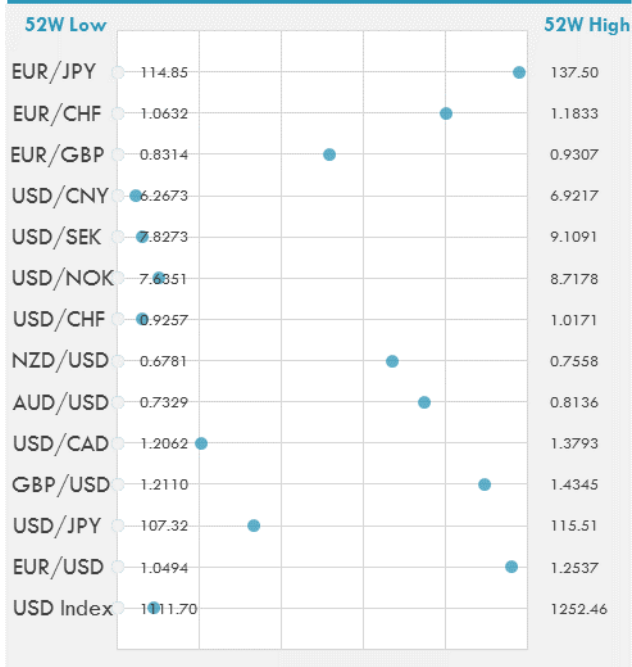
INTERNATIONAL EQUITY INDICES

	Last Price	Daily %	YTD %	Δ10D Vol
EuroStoxx 50	3523.28	-1.51%	0.55%	1.36%
FTSE 100	7443.43	-0.63%	-3.18%	0.05%
CAC 40	5364.98	-1.64%	0.99%	2.73%
DAX	12785.16	-1.68%	-1.03%	1.35%
Swiss SMI	9220.69	-0.76%	-1.72%	-0.14%
Nikkei 225	22682.08	-2.55%	-0.36%	0.41%
CSI 300	4272.52	0.03%	6.00%	-1.27%

DEVELOPED VS EMERGING - 30 DAYS CHART

INTERNATIONAL EQUITY - 30 DAYS CHART


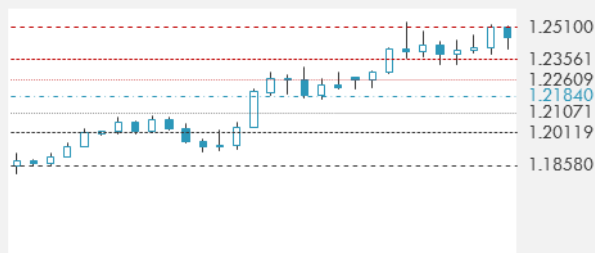
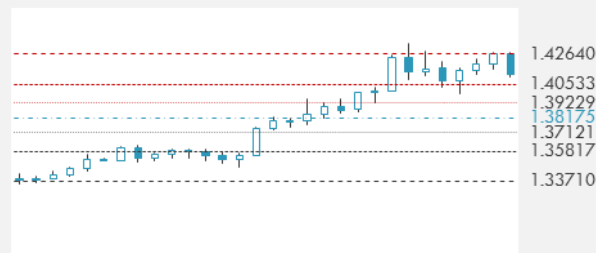
FOREIGN EXCHANGE MARKET

	Last Price	Daily %	Δ10D	Vol 25	ΔRR
Major USD Cross Rate					
USD Index	1123.95	-0.02%	-0.01%	-	
EUR/USD	1.2452	-0.09%	0.09%	0.220	
USD/JPY	110.03	-0.13%	-0.43%	-0.750	
GBP/USD	1.4107	-0.08%	0.04%	0.005	
USD/CAD	1.2415	-0.11%	-0.05%	0.105	
AUD/USD	0.7931	0.00%	0.00%	-0.560	
NZD/USD	0.7302	0.03%	-0.32%	-0.490	
USD/CHF	0.9311	-0.03%	0.14%	-0.883	
USD/NOK	7.7427	0.13%	0.03%	0.150	
USD/SEK	7.9056	0.04%	0.07%	0.138	
USD/CNY	6.2972	-0.06%	-0.05%	0.275	
Major EUR Cross Rate					
EUR/GBP	0.8827	0.05%	-0.05%	0.155	
EUR/CHF	1.1594	-0.12%	0.00%	-0.503	
EUR/JPY	137.01	-0.17%	-0.12%	-0.380	

DISTANCE FROM 52 WEEKS LOW/HIGH


- The yen gained against all its major peers as shares slumped across Asia following a rout in U.S. equities and Treasuries on Friday.
- The Canadian dollar is trading at familiar levels near 1.2300, ceding ground to a broadly stronger USD that's gaining support from the latest surge in yields on the back of the global bond sell-off.
- The pound slipped on Friday against a stronger dollar to trim weekly gains, as investors balanced U.K. political uncertainty against prospects for a softer Brexit and Bank of England inter-

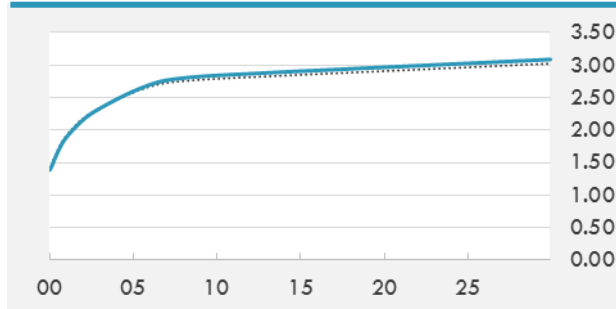
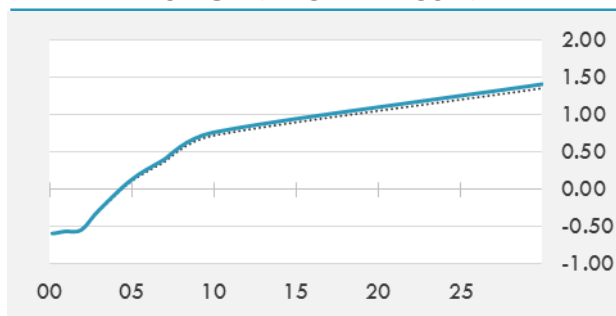
Source: Bloomberg

EUR/USD 30 DAYS SUPPORT & RESISTANCE

GBP/USD 30 DAYS SUPPORT & RESISTANCE

USD/JPY 30 DAYS SUPPORT & RESISTANCE

USD/CAD 30 DAYS SUPPORT & RESISTANCE


GLOBAL BOND INDICES

	Yield	ΔYield (in Bps)
Benchmark Indices		
US 10 Years Benchmark	2.8411	0.051
EU 10 Years Benchmark	0.767	0.046
UK 10 Years Benchmark	1.577	0.046
Sovereign Bonds		
US Treasury Bond	2.543	0.038
Eurozone Sovereign Bond	0	0
Japan Sovereign Bond	-0.051	-0.008
Corporate Bonds		
US Corporate TR	3.542	0.048
US High Yield Bond TR	5.918	0.099
EUR Aggregate Corporate TR	0.846	0.027
EUR High Yield TR	3.345	0.040
USD Emerging Market IG & HY	4.750	0.058

US TREASURIES YIELD CURVE

EUR GENERIC YIELD CURVE


- Jerome Powell will be sworn in Monday morning as the 16th chairman of the Fed, on the day after his 65th birthday. He's inheriting a U.S. economy in its third-longest expansion on record, with unemployment and inflation near historically low levels.
- German bunds slump following USTs after U.S. January jobs report shows bigger-than-expected increase in average hourly earnings and nonfarm payrolls, with futures also dropping.

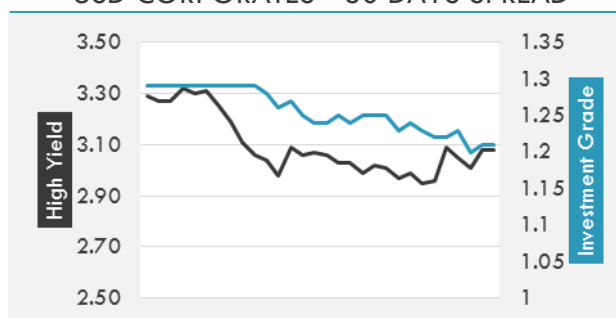
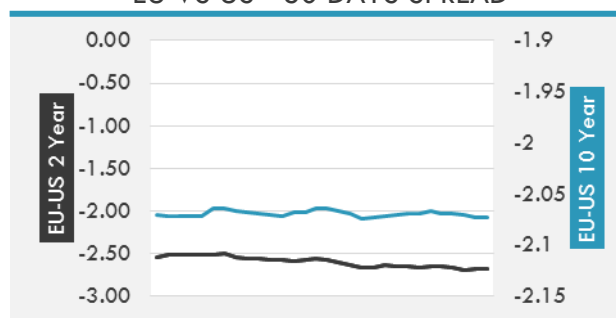
Source: Bloomberg

OVERNIGHT RATES - SWAPS

	Yield	ΔYield (in Bps)
3M USD LIBOR	1.78902	0.0020
3M EUR EURIBOR	-0.329	-0.0010
3M GBP LIBOR	0.52547	0.0032
3Y USD SWAP	2.524	0.0097
5Y USD SWAP	2.6854	0.0267
10Y USD SWAP	2.8771	0.0493
30Y USD SWAP	2.9528	0.0496

FIXED INCOME SPREADS

	Spread	ΔSpread (in Bps)
USD 3M vs 10Y Spread	1.35559	0.0542
USD 2Y vs 10Y Spread	0.69579	0.0711
USD IG Spread	1.21	0.0100
USD HY Spread	3.08	0.0700
EU vs US 10Y Spread	-2.0738	(0.0200)
EU vs US 2Y Spread	-2.6818	0.0159
EM vs Benchmark Spread	201.7	1.900

USD CORPORATES - 30 DAYS SPREAD

EU VS US - 30 DAYS SPREAD


GLOBAL COMMODITIES MARKET

	Last Price	Daily %
Commodity Index	89.12	-0.83%

Energy

WTI Crude Future	65.45	-0.53%
Brent Crude Future	68.58	-1.54%
NYMEX Gasoline	187.2	-1.26%
NYMEX Heat Oil	205.35	-1.77%
ICE Gasoil	610.5	-1.17%
NYMEX Natural Gas	2.846	-0.35%

Precious Metals

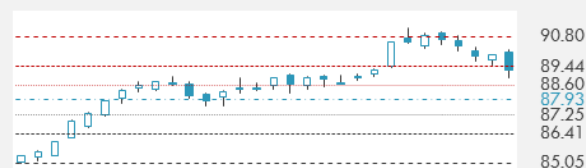
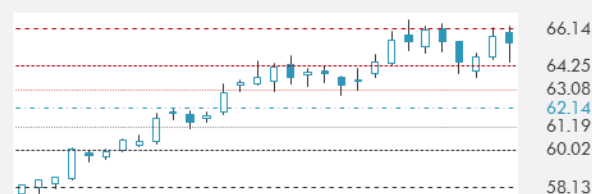
Gold Spot \$/Oz	1333.39	-1.14%
Silver Spot \$/Oz	16.591	-3.75%
Platinum Spot \$/Oz	991.22	-1.64%
Palladium Spot \$/Oz	1049.4	0.83%
Gold Future	1337.3	-0.79%
Silver Future	16.709	-2.60%
Platinum Future	999.4	-0.83%
Palladium Future	1044.95	1.98%

Base Metals

LME Aluminum	2210	-0.67%
LME Copper	7045	-1.04%
LME Zinc	3502	-1.55%
LME Nickel	13435	-4.04%
LME Lead	2681	0.60%
LME Tin	21530	0.61%

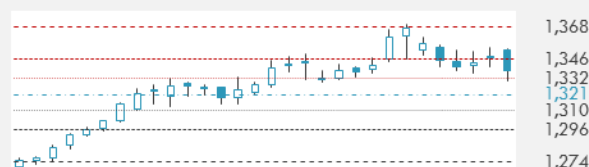
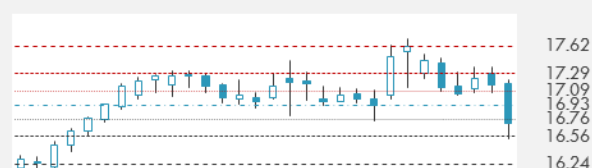
Agricultural

Corn CBT	361.5	-0.07%
Wheat CBT	446.75	-0.94%
Soybeans CBT	978.75	-0.63%
Bean Meal CBT	331.4	-0.78%
Rough Rice CBT	12.46	0.44%
MDE Palm Oil	2467	-1.00%
Soybean CBT	32.51	-1.19%
Coffee ICE	120.4	-0.82%
Sugar #11 ICE	13.63	1.94%
Cotton #2 ICE	77.3	-1.34%
Cocoa ICE	2059	2.08%
Ethanol CME	1.443	0.63%
Lumber CME	483.7	1.81%
Orange Juice ICE	147	-1.34%
Live Cattle CME	126.125	0.16%
Feeder Cattle CME	150.925	0.92%
Lean Hogs CME	73.55	1.00%

COMMODITY INDEX SUPPORT & RESISTANCE

WTI OIL 30 DAYS SUPPORT & RESISTANCE


- Oil's rally is unraveling on fears over a rise in U.S. production after crude's best January in more than a decade.
- Gold extends decline after posting the biggest one-day loss in almost two months on Friday as investors weigh outlook for U.S. interest rates.

Source: Bloomberg

GOLD 30 DAYS SUPPORT & RESISTANCE

SILVER 30 DAYS SUPPORT & RESISTANCE


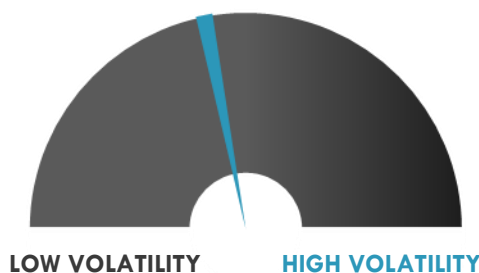
TOP 10 WINNERS

	Ticker	Last Price	Daily %
S&P 500 Stocks			
FREEMONT-MCMORAN	FCX	17.97	-7.61
FORTUNE BRANDS H	FBHS	64.9	-7.05
CLOROX CO	CLX	130.91	-6.71
ADV MICRO DEVICE	AMD	12.45	-6.04
CBS CORP-B	CBS	55.4	-5.99
DISCOVERY COMM-A	DISCA	23.81	-5.81
QUANTA SERVICES	PWR	36.09	-5.67
DISCOVERY COMM-C	DISCK	22.8	-5.67
CHEVRON CORP	CVX	118.58	-5.57
HESS CORP	HES	47.79	-5.53

TOP 10 LOSERS

	Ticker	Last Price	Daily %
S&P 500 Stocks			
MATTEL INC	MAT	16.53	7.90
MOTOROLA SOLUTIO	MSI	103.87	4.79
CHARTER COMMUN-A	CHTR	387.5	4.40
XL GROUP LTD	XL	38.25	3.97
EDWARDS LIFE	EW	131.83	3.82
AMAZON.COM INC	AMZN	1429.95	2.87
NEWELL BRANDS IN	NWL	27.98	2.12
WESTROCK CO	WRK	67.24	1.45
ROPER TECHNOLOGI	ROP	285.2	1.40
HCP INC	HCP	23.86	1.23

S&P 500 DISTRIBUTION

S&P VOLATILITY INDEX


- Apple will be ready to open its first data center in China in 2020, Xinhua reports. The company's set to launch the \$1B project's construction later this year, according to the communications administration of Guizhou Province in southwestern China. It's a 67-hectare site that will offer iCloud service on the mainland. Starting Feb. 28, mainland iCloud services will be operated by local partner Guizhou-Cloud Big Data Industry Co.
- Apple is launching a free repair program to address a component failure afflicting a "small percentage" of iPhone 7 devices.
- Exxon Mobil expects global oil demand to drop through 2040 if regulations aimed at cutting greenhouse gas emissions with the goal of limiting climate change to 2 degrees Celsius are fully implemented, according to the company's climate analysis released today after years of investor pressure.
- Fiat Chrysler plunged 7.1% following a Bloomberg report near the session close that the U.S. Department of Justice has offered to settle its emissions-cheating lawsuit if the company pays a substantial civil penalty and recalls 104K vehicles. The settlement "must include very substantial civil penalties" large enough to deter future violations and that "adequately reflect the seriousness of the conduct that led to these violations," DoJ reportedly wrote in a letter last week to FCAU attorneys.
- Bank of America is now the largest U.S. lender barring customers from using credit cards to buy cryptocurrencies.

KEY ECONOMIC INDICATORS

Country	Event	Surv (M)	Actual	Prior	Time
Canada	Statcan Canola Stocks	14367k	--	1348k	15:30
Canada	Statcan Durum Stocks	4794k	--	1863k	15:30
Canada	Statcan Wheat Stocks	23901k	--	6865k	15:30
China	Caixin China PMI Composite	--	53.7	53	3:45
China	Caixin China PMI Services	53.5	54.7	53.9	3:45
Eurozone	Markit Eurozone Composite PMI	58.6	--	58.6	11:00
Eurozone	Markit Eurozone Services PMI	57.6	--	57.6	11:00
France	Markit France Services PMI	59.3	--	59.3	10:50
France	Markit France Composite PMI	59.7	--	59.7	10:50
Germany	Markit Germany Services PMI	57	--	57	10:55
Germany	Markit/BME Germany Composite PMI	58.8	--	58.8	10:55
Italy	Markit/ADACI Italy Services PMI	55.9	--	55.4	10:45
Italy	Markit/ADACI Italy Composite PMI	57.4	--	56.5	10:45
Japan	Nikkei Japan PMI Services	--	51.9	51.1	2:30
Japan	Nikkei Japan PMI Composite	--	52.8	52.2	2:30
Russia	Markit Russia PMI Services	56.9	55.1	56.8	8:00
Russia	Markit Russia PMI Composite	--	54.8	56	8:00
Saudi Arabia	Emirates NBD Saudi Arabia PMI	--	53	57.3	6:15
United Kingdom	Markit/CIPS UK Services PMI	54.1	--	54.2	11:30
United States	ISM Non-Manf. Composite	56.7	--	55.9	17:00

Source: Bloomberg

Banque BEMO sal
Head Office - Private and Corporate Banking

 96 Pasteur Building, Pasteur Street, Medawar Area, P.O. Box: 16-6353, Beirut - Lebanon
 Tel: + 961 1 568 250 Fax: + 961 1 568 266

Wealth & Investment Management research@bemobank.com

 Beirut Central District Riad El Solh Square, Esseily Building Bloc A, 7th Floor Beirut - Lebanon
 Tel: + 961 1 992 600 Fax: + 961 1 983 368
www.bemobank.com
Disclaimer:

This report is published for information purposes only. The information herein has been compiled from, or based upon sources considered to be reliable (Bloomberg, SeekingAlpha, DailyStar...), but we do not guarantee or assume responsibility for its completeness and accuracy. This document should not be construed as a solicitation to take part in any investment, or as constituting any representation or warranty on our part. This report is not to be relied upon in substitution for the exercise of specialists.

We may not have taken any steps to ensure that the securities referred to in this report are suitable for any particular investor. The investments and services contained or referred to herein are not purported to be exhaustive, any person considering an investment should seek specialist advice on the suitability of an investment.

Nothing in this report constitutes investment, legal, accounting or tax advice, or a representation that any investment or strategy is suitable or appropriate to your individual circumstances, or otherwise constitutes a personal recommendation. Clients understand that it is their responsibility to seek legal and/or tax advice regarding the legal and tax consequences of their investment transactions. The consequences of any action taken on the basis of information contained herein are solely the responsibility of the recipient.

Investment instruments are subject to risk, including possible loss of principal amount invested. Past performance should not be taken as an indication or guarantee of future performance, and no representation or warranty, express or implied, is made regarding future performance. The value of securities and financial instruments is subject to exchange rate fluctuation that may have a positive or adverse effect on the price or income of such securities or financial instruments. Some investments mentioned in this report may have a high level of volatility. High volatility investments may experience sudden and large falls in their value causing losses when that investment is realized. Some investments may not be readily realizable and it may be difficult to sell or realize those investments, similarly it may prove difficult to obtain reliable information about the value, or risks, to which such an investment is exposed.

This report may provide the addresses of websites or references. We have not reviewed any such site and takes no responsibility for the content contained therein. Such address or reference is provided solely for convenience and information. Accessing such website through this report shall be at the recipients own risk.