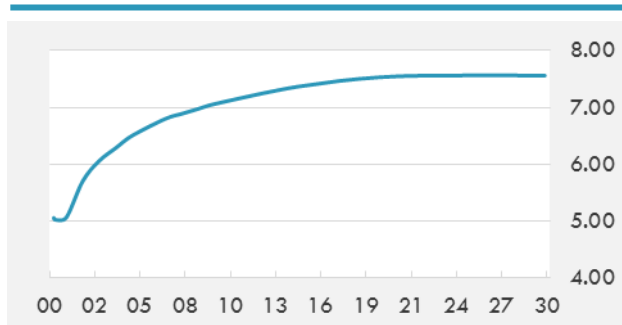


**BEIRUT STOCK EXCHANGE**

	Last	Daily %	YTD %	Dividend %
MSCI Lebanon	660.8	-0.38%	1.00%	
<b>Development and Reconstruction</b>				
Solidere A	8.05	-0.74%	0.50%	
Solidere B	7.94	-3.64%	-0.50%	
<b>Banking</b>				
Audi Listed	5.99	0.00%	4.17%	8.32%
BLC Listed	0.93	0.00%	0.00%	
BOB Listed	18.8	0.00%	0.00%	3.52%
Byblos Listed	1.59	-0.63%	-0.63%	8.32%
BEMO Listed	1.3	0.00%	0.00%	4.07%
BLOM Listed	11.7	0.26%	0.52%	8.47%
<b>Trading</b>				
RYMCO	3.25	0.00%	0.00%	
<b>Industrial</b>				
Holcim	14.5	0.28%	0.28%	16.46%
Ciments Blancs	2.25	0.00%	0.00%	

**MSCI LEBANON INDEX - 30 DAYS CHART**

**LEBANESE USD SOVEREIGN CURVE**


- A London-based institute warned that the growing political and security risks in Lebanon could slow economic growth and impede reconstruction efforts. The report by IHS Markit also expressed fear of a devastating war with Israel over the next five years.
- Qatar is witnessing a remarkable development towards building a fast-growing and accelerated economy. It is implementing an ambitious development program that has transformed Doha into a workshop for a variety of projects that will make it a strong economic center in the region and the world.

Source: Daily Star, Gulf Base

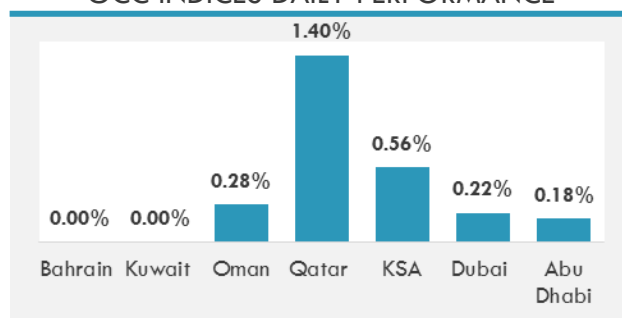
**GCC EQUITY INDICES**

	Last Price	Daily %	YTD %
Bahrain	1312.33	0.00%	-1.26%
Kuwait	6454.16	0.00%	1.64%
Oman	5119.18	0.28%	0.42%
Qatar	8751.2	1.40%	3.66%
KSA	7317.65	0.56%	1.26%
Dubai	3471.09	0.22%	3.06%
Abu Dhabi	4556.41	0.18%	3.40%

**MSCI GCC INDEX - 30 DAYS CHART**

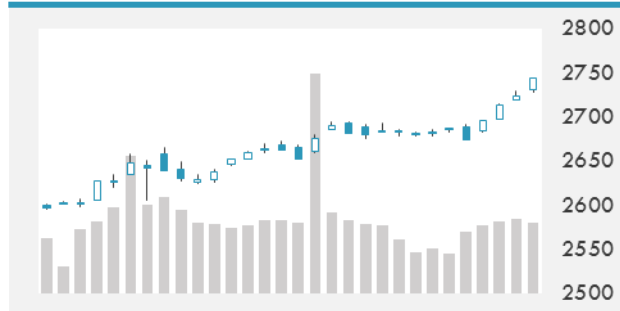
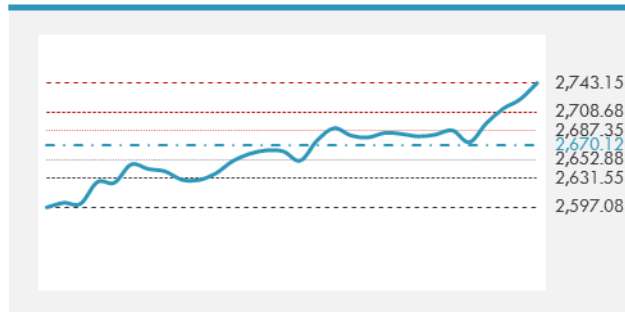
**LOCAL/GCC FOREIGN EXCHANGE**

	Cross	Last Price
Lebanese Pound Spot	USD/LBP	1513
Bahraini Dinar Spot	USD/BHD	0.37707
Kuwaiti Dinar Spot	USD/KWD	0.30151
Omani Rial Spot	USD/OMR	0.38496
Qatari Riyal Spot	USD/QAR	3.6662
Saudi Riyal Spot	USD/SAR	3.7504
UAE Dirham Spot	USD/AED	3.673

**GCC INDICES DAILY PERFORMANCE**


**UNITED STATES EQUITY MARKET INDICES**

	Last Price	Daily %	YTD %	Δ10D Vol
<b>Major Indices</b>				
DowJones	25295.87	0.88%	2.33%	1.28%
S&P 500	2743.15	0.70%	2.60%	0.57%
Nasdaq	7136.558	0.83%	3.38%	0.51%
<b>Sectors Indices</b>				
Discretionary	810.90	0.86%	3.26%	0.34%
Staples	588	0.45%	0.10%	0.72%
Energy	554.41	-0.02%	3.94%	-2.16%
Financials	471.92	0.30%	1.72%	-0.91%
Healthcare	987.31	0.90%	3.24%	0.41%
Industrials	655.66	0.73%	2.80%	0.38%
IT	1152.81	1.18%	4.22%	0.74%
Materials	394.19	0.89%	4.02%	0.30%
Telecom	163.93	0.09%	-1.29%	-0.74%
Utilities	260.69	-0.02%	-2.50%	-1.25%
Real Estate	199.93	0.28%	-1.93%	-0.04%

**S&P 500 INDEX - 30 DAYS CHART**

**S&P 500 SUPPORT & RESISTANCE**


- U.S. stocks climbed as a risk-on tone saturated markets. The S&P 500 clinched its largest weekly gain in more than a year.
- European stocks head for their longest winning streak in two months, helped by a rally in car-makers and health-care shares.
- Asian stocks rose, building on their sharpest weekly rally since September 2016, ahead of the start of earnings season and after President Donald Trump said the U.S. was open to talks with North Korea at the right time.

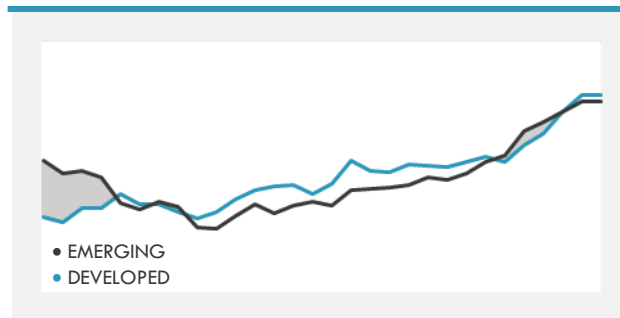
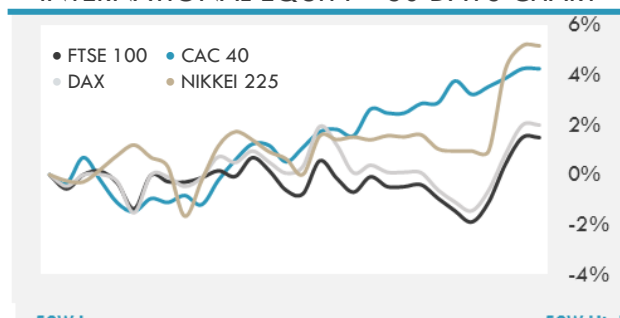
Source: Bloomberg

**INTERNATIONAL MARKETS INDICES**

	Last Price	Daily %	YTD %	Δ10D Vol
World	1287.46	0.65%	2.66%	0.15%
Developed	2156.6	0.65%	2.53%	0.27%
Emerging	1201.01	0.71%	3.67%	-0.43%
Frontier	3079.54	0.40%	3.05%	-0.37%
Europe	134.13	0.92%	2.07%	1.41%
Latin America	2969.25	0.35%	4.99%	-0.42%
Asia Pacific	179.25	0.66%	3.13%	-0.04%

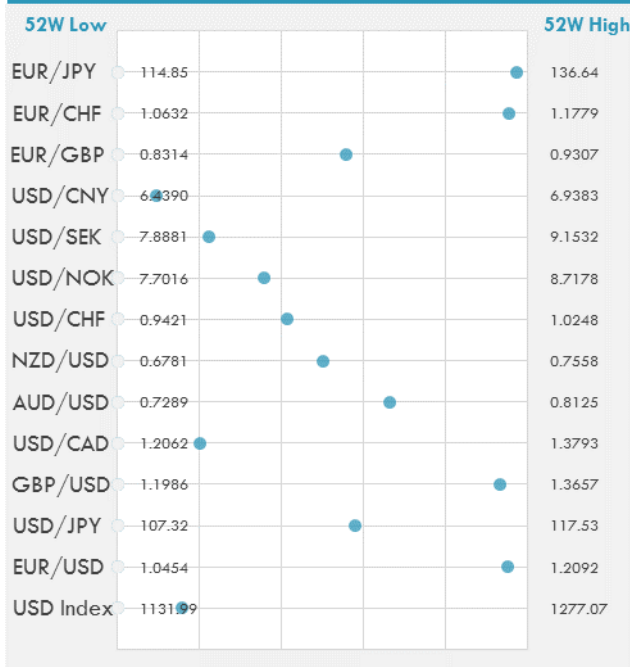
**INTERNATIONAL EQUITY INDICES**

	Last Price	Daily %	YTD %	Δ10D Vol
EuroStoxx 50	3607.63	1.09%	2.96%	0.29%
FTSE 100	7724.22	0.37%	0.47%	-0.50%
CAC 40	5470.75	1.05%	2.98%	0.39%
DAX	13319.64	1.15%	3.11%	-0.41%
Swiss SMI	9556.98	0.50%	1.87%	-0.48%
Nikkei 225	23714.53	0.00%	4.17%	0.20%
CSI 300	4156.41	0.43%	3.11%	-0.34%

**DEVELOPED VS EMERGING - 30 DAYS CHART**

**INTERNATIONAL EQUITY - 30 DAYS CHART**


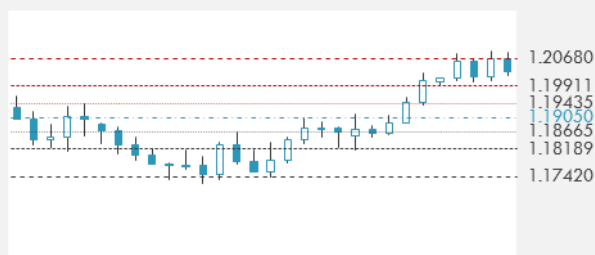
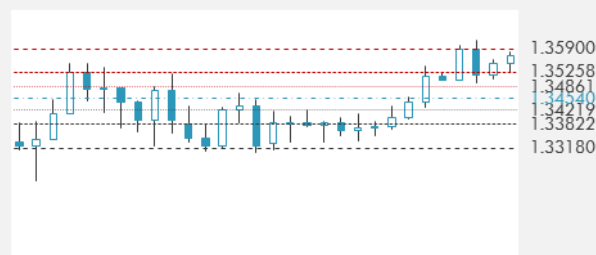
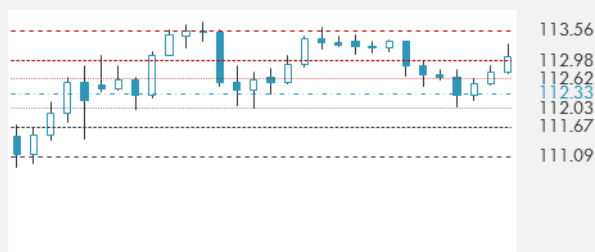
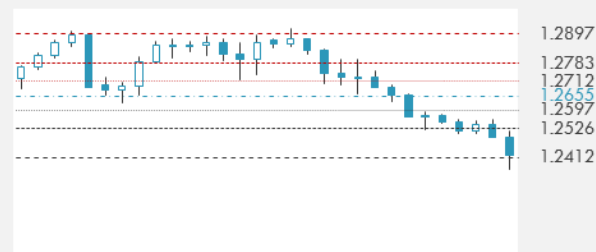
**FOREIGN EXCHANGE MARKET**

	Last Price	Daily %	Δ10D	Vol 25	ΔRR
<b>Major USD Cross Rate</b>					
USD Index	1154.73	0.17%	0.01%	-	
EUR/USD	1.201	-0.16%	0.09%	0.265	
USD/JPY	113.24	0.17%	0.12%	-0.095	
GBP/USD	1.3544	-0.20%	0.30%	-0.010	
USD/CAD	1.2408	-0.03%	0.18%	0.073	
AUD/USD	0.7843	-0.27%	0.96%	-0.020	
NZD/USD	0.717	-0.04%	0.23%	-0.030	
USD/CHF	0.9762	0.15%	0.24%	-0.473	
USD/NOK	8.0641	0.16%	0.59%	0.100	
USD/SEK	8.1703	0.15%	-0.21%	0.340	
USD/CNY	6.4865	-0.03%	-0.84%	0.185	
<b>Major EUR Cross Rate</b>					
EUR/GBP	0.88677	0.04%	-0.07%	0.258	
EUR/CHF	1.17242	-0.02%	-0.03%	-0.185	
EUR/JPY	136.01	-0.01%	-0.13%	-0.070	

**DISTANCE FROM 52 WEEKS LOW/HIGH**


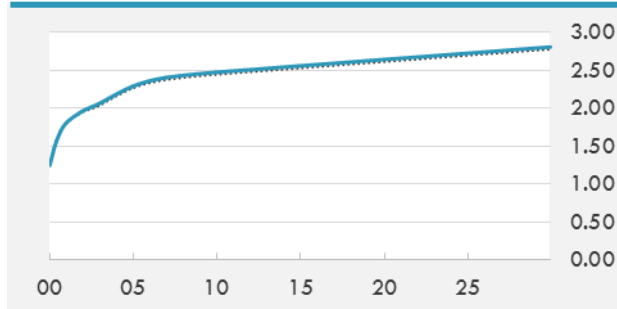
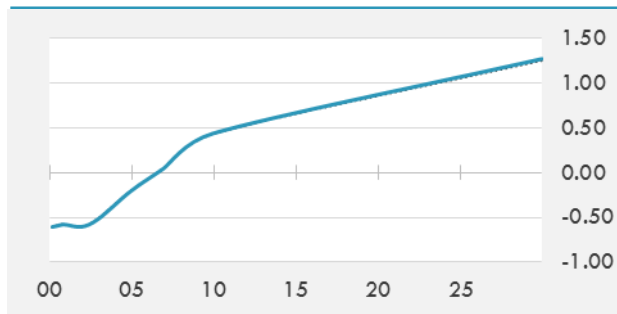
- The dollar held near a four-month low in muted trading in Asia after U.S. employment data missed estimates. The yen slipped as proposed talks between North and South Korea raised optimism about unwinding geopolitical tension.
- Australian dollar reverses gains made since Friday's U.S. non-farm payroll miss as macro accounts short spot against both kiwi and dollar.
- China's central bank skips open-market operations for 11th day, citing relatively high level of banking liquidity, which will offset reverse repo maturities.

Source: Bloomberg

**EUR/USD 30 DAYS SUPPORT & RESISTANCE**

**GBP/USD 30 DAYS SUPPORT & RESISTANCE**

**USD/JPY 30 DAYS SUPPORT & RESISTANCE**

**USD/CAD 30 DAYS SUPPORT & RESISTANCE**


**GLOBAL BOND INDICES**

	Yield	ΔYield (in Bps)
<b>Benchmark Indices</b>		
US 10 Years Benchmark	2.4763	0.024
EU 10 Years Benchmark	0.439	0.005
UK 10 Years Benchmark	1.244	0.010
<b>Sovereign Bonds</b>		
US Treasury Bond	2.258	0.016
Eurozone Sovereign Bond	0	0
Japan Sovereign Bond	-0.075	0
<b>Corporate Bonds</b>		
US Corporate TR	3.315	0.010
US High Yield Bond TR	5.536	-0.034
EUR Aggregate Corporate TR	0.734	-0.014
EUR High Yield TR	3.228	-0.019
USD Emerging Market IG & HY	4.485	-0.002

**US TREASURIES YIELD CURVE**

**EUR GENERIC YIELD CURVE**


- A kink in the Treasury bill curve won't likely return any time soon, with Congress said to be seeking to lift the U.S. debt limit in February by attaching a measure to a govt-funding bill.
- European core bonds edge lower, after bunds briefly jump following Treasuries on soft U.S. payrolls data. Earlier peripheral rise, amid disappointing core CPI print and stocks rally, pared into the close, though Spain, Italy and Portugal spreads over Germany still tighter after first week of 2018 trading.

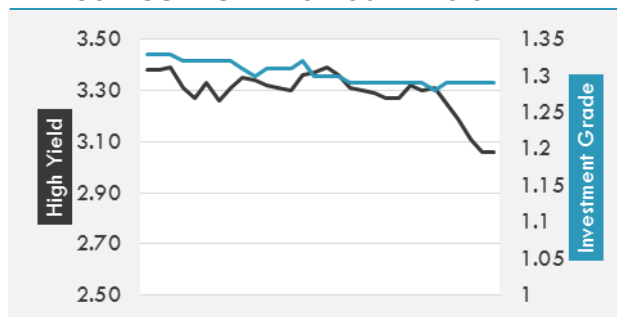
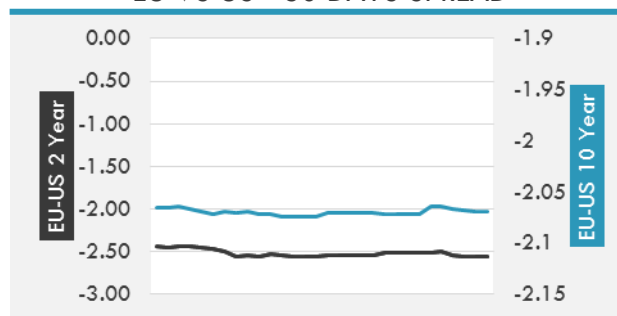
Source: Bloomberg

**OVERNIGHT RATES - SWAPS**

	Yield	ΔYield (in Bps)
3M USD LIBOR	1.70393	0.0001
3M EUR EURIBOR	-0.329	0.0000
3M GBP LIBOR	0.52125	0.0038
3Y USD SWAP	2.2452	0.0122
5Y USD SWAP	2.3324	0.0193
10Y USD SWAP	2.4701	0.0241
30Y USD SWAP	2.6107	0.0253

**FIXED INCOME SPREADS**

	Spread	ΔSpread (in Bps)
USD 3M vs 10Y Spread	1.07244	0.0239
USD 2Y vs 10Y Spread	0.51236	0.0154
USD IG Spread	1.29	-
USD HY Spread	3.06	(0.0500)
EU vs US 10Y Spread	-2.0373	(0.0243)
EU vs US 2Y Spread	-2.565	(0.0062)
EM vs Benchmark Spread	207.7	(1.500)

**USD CORPORATES - 30 DAYS SPREAD**

**EU VS US - 30 DAYS SPREAD**


**GLOBAL COMMODITIES MARKET**

	Last Price	Daily %
Commodity Index	87.92	-0.74%

**Energy**

WTI Crude Future	61.44	-0.92%
Brent Crude Future	67.62	-0.66%
NYMEX Gasoline	178.58	-1.16%
NYMEX Heat Oil	205.87	-0.88%
ICE Gasoil	605	-0.66%
NYMEX Natural Gas	2.795	-2.95%

**Precious Metals**

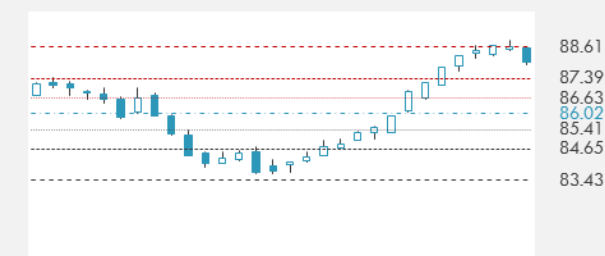
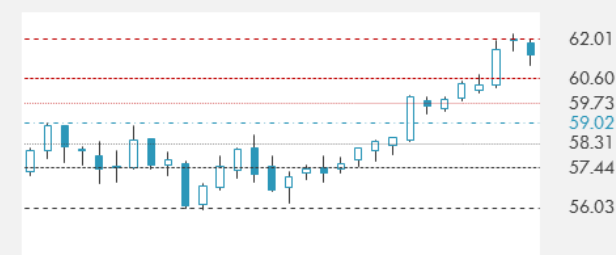
Gold Spot \$/Oz	1319.59	-0.26%
Silver Spot \$/Oz	17.2222	-0.04%
Platinum Spot \$/Oz	969.28	0.57%
Palladium Spot \$/Oz	1092.81	-0.67%
Gold Future	1322.3	0.05%
Silver Future	17.285	0.09%
Platinum Future	975.2	0.52%
Palladium Future	1082.2	-1.15%

**Base Metals**

LME Aluminum	2203	-2.11%
LME Copper	7121	-0.94%
LME Zinc	3354	-0.24%
LME Nickel	12525	-0.99%
LME Lead	2540	-1.82%
LME Tin	19975	0.63%

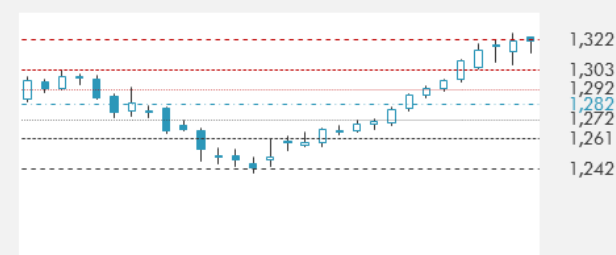
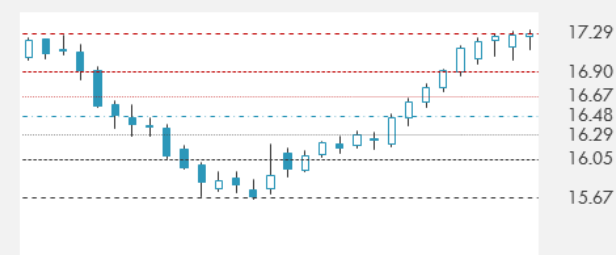
**Agricultural**

Corn CBT	351.25	0.07%
Wheat CBT	430.75	-0.75%
Soybeans CBT	970.75	0.31%
Bean Meal CBT	321.9	0.66%
Rough Rice CBT	11.805	0.81%
MDE Palm Oil	2594	0.35%
Soybean CBT	33.76	-0.32%
Coffee ICE	128.45	-0.85%
Sugar #11 ICE	15.08	-1.11%
Cotton #2 ICE	78.01	-1.56%
Cocoa ICE	1895	-0.52%
Ethanol CME	1.315	-0.53%
Lumber CME	459.1	1.10%
Orange Juice ICE	138	-0.61%
Live Cattle CME	119.25	-2.45%
Feeder Cattle CME	141.975	-2.46%
Lean Hogs CME	71.425	0.07%

**COMMODITY INDEX SUPPORT & RESISTANCE**

**WTI OIL 30 DAYS SUPPORT & RESISTANCE**


- Oil traded above \$61 a barrel as signs of slowing U.S. drilling added to optimism that the global crude surplus is abating.
- Gold steady, following four weeks of increases, after Friday's U.S. payrolls report missed expectations. Dollar rebounds to pare losses.

Source: Bloomberg

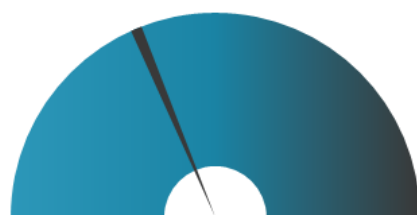
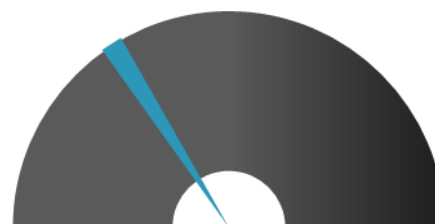
**GOLD 30 DAYS SUPPORT & RESISTANCE**

**SILVER 30 DAYS SUPPORT & RESISTANCE**


**TOP 10 WINNERS**

	Ticker	Last Price	Daily %
<b>S&amp;P 500 Stocks</b>			
ADV MICRO DEVICE	AMD	12.12	4.94
ARCONIC INC	ARNC	29.32	4.79
STERICYCLE INC	SRCL	70.85	4.76
MICRON TECH	MU	46.88	4.22
ADVANCE AUTO PAR	AAP	111	3.69
APACHE CORP	APA	46.84	3.33
BAKER HUGHES A	BHGE	34.63	3.28
BORGWARNER INC	BWA	53.73	3.25
GENERAL MOTORS C	GM	44.14	3.08
HUMANA INC	HUM	258.36	2.82

**TOP 10 LOSERS**

	Ticker	Last Price	Daily %
<b>S&amp;P 500 Stocks</b>			
RANGE RESOURCES	RRC	16.76	-3.68
JOHNSON CONTROLS	JCI	38.42	-3.59
WYNDHAM WORLD-WID	WYN	112.44	-2.84
SCANA CORP	SCG	45.02	-2.83
ULTA BEAUTY INC	ULTA	237.96	-2.83
CONSTELLATION-A	STZ	219.88	-2.62
MICRON TECH	MU	45.8	-2.30
ILLUMINA INC	ILMN	228.17	-2.07
ADV MICRO DEVICE	AMD	11.88	-1.98
EQT CORP	EQT	57.81	-1.97

**S&P 500 DISTRIBUTION**

**WINNERS**
**LOSERS**
**S&P VOLATILITY INDEX**

**LOW VOLATILITY**
**HIGH VOLATILITY**

- It looks like a rethink for Travis Kalanick, who has long boasted that he's never sold any shares in the company he co-founded. The former CEO of Uber Technologies is selling nearly a third of his 10% stake in the ride-services firm for about \$1.4B, Bloomberg reports.
- GoPro is in the process of laying off around 200-300 employees this week, according to TechCrunch. The job cuts are largely concentrated in the company's aerial division, the segment responsible for its Karma drone.
- Brazilian shareholders of state-controlled Petrobras are petitioning a local court to be paid on similar terms as those given to U.S. shareholders - an almost \$3B deal that marked one of America's largest class action settlements.
- In a major step ahead of a planned IPO, Saudi Arabia has changed the status of Aramco to a joint-stock company.
- Unlike some retailers, store closures will be a marker of strength for Walmart, according to former Walmart.com CEO Carter Cast. "I believe Walmart will continue to use the internet and grow their e-commerce sales from about 4%-5% to well over 10%," he told CNBC.
- Google has led a \$120M investment in livestream mobile game platform Chushou, aiming to expand its services to target more overseas viewers.
- The time between Apple announcing a product and shipping the product has doubled with Tim Cook as CEO, according to The Wall Street Journal. Over 70 new or updated products have launched under Cook. Five had a delay of three months or more, and nine had one to three month delays.

**KEY ECONOMIC INDICATORS**

Country	Event	Surv(M)	Actual	Prior	Time
China	Foreign Direct Investment YoY CNY	--	--	90.70%	
Eurozone	Consumer Confidence	0.5	--	0.5	12:00
Eurozone	Retail Sales MoM	1.30%	--	-1.10%	12:00
Eurozone	Retail Sales YoY	2.40%	--	0.40%	12:00
Eurozone	Economic Confidence	114.8	--	114.6	12:00
Eurozone	Industrial Confidence	8.4	--	8.2	12:00
Eurozone	Business Climate Indicator	1.5	--	1.49	12:00
Eurozone	Services Confidence	16.5	--	16.3	12:00
Eurozone	Sentix Investor Confidence	31.3	--	31.1	11:30
France	France to Sell Bills				15:50
France	France to Sell Up to EUR1.3 Bln 359-Day Bills				15:50
France	France to Sell Up to EUR1.2 Bln 161-Day Bills				15:50
Germany	Factory Orders MoM	0.00%	-0.40%	0.50%	9:00
Germany	Factory Orders WDA YoY	7.80%	8.70%	6.90%	9:00
Italy	Bank of Italy Report on Balance-Sheet				11:30
United Kingdom	Halifax House Prices MoM	0.20%	--	0.50%	10:30
United Kingdom	Halifax House Price 3Mths/Year	3.30%	--	3.90%	10:30
United States	Consumer Credit	\$18.000b	--	\$20.519b	22:00
United States	U.S. to Sell USD48 Bln 3-Month Bills				18:30
United States	U.S. to Sell USD42 Bln 6-Month Bills				18:30

Source: Bloomberg

**Banque BEMO sal**
**Head Office - Private and Corporate Banking**

 96 Pasteur Building, Pasteur Street, Medawar Area, P.O. Box: 16-6353, Beirut - Lebanon  
 Tel: + 961 1 568 250 Fax: + 961 1 568 266

**Wealth & Investment Management** [research@bemobank.com](mailto:research@bemobank.com)

 Beirut Central District Riad El Solh Square, Esseily Building Bloc A, 7th Floor Beirut - Lebanon  
 Tel: + 961 1 992 600 Fax: + 961 1 983 368  
[www.bemobank.com](http://www.bemobank.com)
**Disclaimer:**

This report is published for information purposes only. The information herein has been compiled from, or based upon sources considered to be reliable (Bloomberg, SeekingAlpha, DailyStar...), but we do not guarantee or assume responsibility for its completeness and accuracy. This document should not be construed as a solicitation to take part in any investment, or as constituting any representation or warranty on our part. This report is not to be relied upon in substitution for the exercise of specialists.

We may not have taken any steps to ensure that the securities referred to in this report are suitable for any particular investor. The investments and services contained or referred to herein are not purported to be exhaustive, any person considering an investment should seek specialist advice on the suitability of an investment.

Nothing in this report constitutes investment, legal, accounting or tax advice, or a representation that any investment or strategy is suitable or appropriate to your individual circumstances, or otherwise constitutes a personal recommendation. Clients understand that it is their responsibility to seek legal and/or tax advice regarding the legal and tax consequences of their investment transactions. The consequences of any action taken on the basis of information contained herein are solely the responsibility of the recipient.

Investment instruments are subject to risk, including possible loss of principal amount invested. Past performance should not be taken as an indication or guarantee of future performance, and no representation or warranty, express or implied, is made regarding future performance. The value of securities and financial instruments is subject to exchange rate fluctuation that may have a positive or adverse effect on the price or income of such securities or financial instruments. Some investments mentioned in this report may have a high level of volatility. High volatility investments may experience sudden and large falls in their value causing losses when that investment is realized. Some investments may not be readily realizable and it may be difficult to sell or realize those investments, similarly it may prove difficult to obtain reliable information about the value, or risks, to which such an investment is exposed.

This report may provide the addresses of websites or references. We have not reviewed any such site and takes no responsibility for the content contained therein. Such address or reference is provided solely for convenience and information. Accessing such website through this report shall be at the recipients own risk.