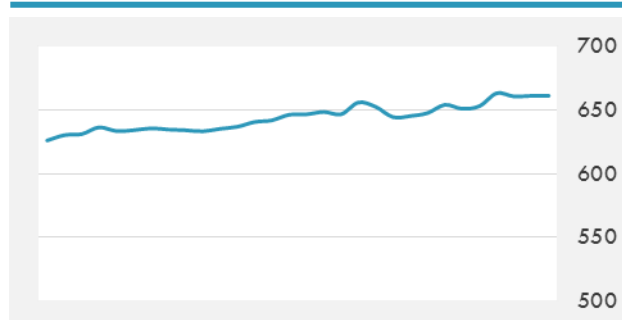
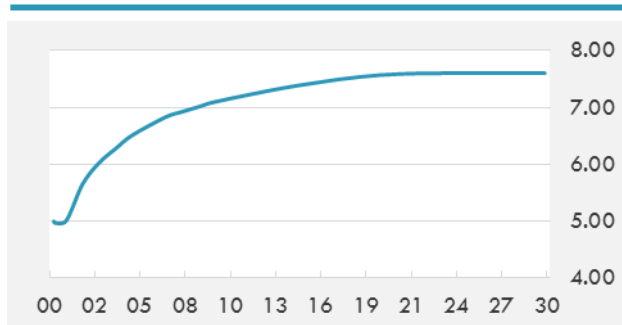


**BEIRUT STOCK EXCHANGE**

	Last	Daily %	YTD %	Dividend %
MSCI Lebanon	653.28	0.34%	-0.14%	
<b>Development and Reconstruction</b>				
Solidere A	7.96	0.76%	-0.62%	
Solidere B	7.88	0.13%	-1.25%	
<b>Banking</b>				
Audi Listed	5.75	0.00%	0.00%	8.32%
BLC Listed	0.93	0.00%	0.00%	
BOB Listed	18.8	0.00%	0.00%	3.52%
Byblos Listed	1.58	-1.25%	-1.25%	8.27%
BEMO Listed	1.3	0.00%	0.00%	4.07%
BLOM Listed	11.67	0.26%	0.26%	8.43%
<b>Trading</b>				
RYMCO	3.25	0.00%	0.00%	
<b>Industrial</b>				
Holcim	14.46	0.00%	0.00%	16.46%
Ciments Blancs	2.25	0.00%	0.00%	

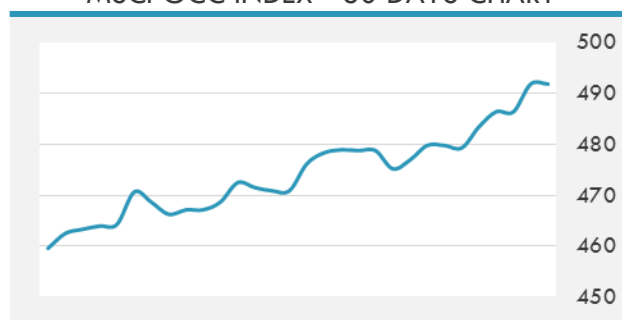
**MSCI LEBANON INDEX - 30 DAYS CHART**

**LEBANESE USD SOVEREIGN CURVE**


- The government of Dubai said it will launch its own three-day real estate exhibition to promote the sale of completed and distressed properties across the emirate and attract more overseas investors.
- The inflation rate in the Sultanate increased by 1.7 per cent in December 2017, compared with the same period in 2016, according to the latest data issued by the National Centre for Statistics and Information (NCSI).

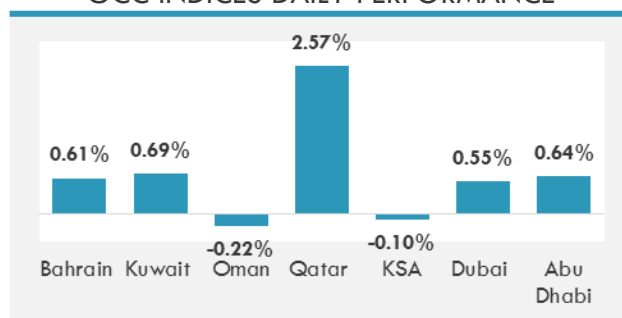
Source: Daily Star, Gulf Base

**GCC EQUITY INDICES**

	Last Price	Daily %	YTD %
Bahrain	1320.4	0.61%	-0.85%
Kuwait	6498.49	0.69%	1.61%
Oman	5107.97	-0.22%	0.29%
Qatar	8975.82	2.57%	5.48%
KSA	7310.26	-0.10%	1.16%
Dubai	3490.16	0.55%	3.38%
Abu Dhabi	4585.54	0.64%	4.04%

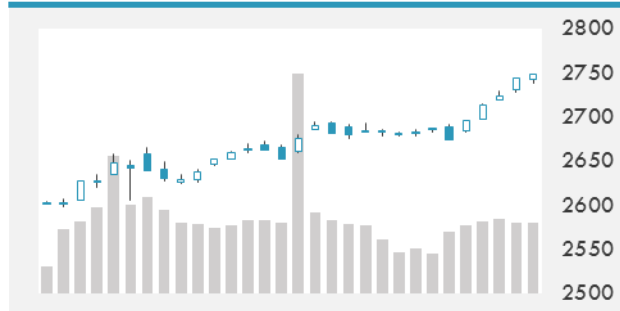
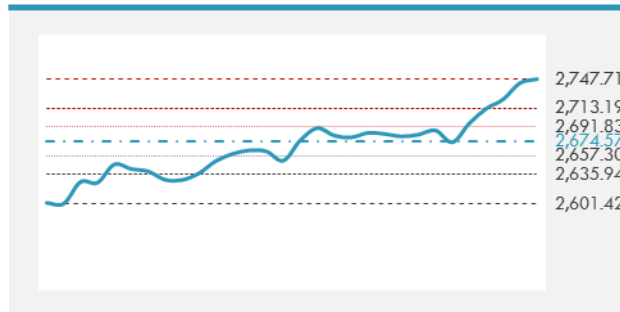
**MSCI GCC INDEX - 30 DAYS CHART**

**LOCAL/GCC FOREIGN EXCHANGE**

	Cross	Last Price
Lebanese Pound Spot	USD/LBP	1513.5
Bahraini Dinar Spot	USD/BHD	0.37705
Kuwaiti Dinar Spot	USD/KWD	0.30158
Omani Rial Spot	USD/OMR	0.38496
Qatari Riyal Spot	USD/QAR	3.6675
Saudi Riyal Spot	USD/SAR	3.7505
UAE Dirham Spot	USD/AED	3.673

**GCC INDICES DAILY PERFORMANCE**


**UNITED STATES EQUITY MARKET INDICES**

	Last Price	Daily %	YTD %	Δ10D Vol
<b>Major Indices</b>				
Dow Jones	25283	-0.05%	2.28%	-0.10%
S&P 500	2747.71	0.17%	2.77%	-0.19%
Nasdaq	7157.386	0.29%	3.68%	-0.20%
<b>Sectors Indices</b>				
Discretionary	811.59	0.09%	3.34%	-0.30%
Staples	589.34	0.23%	0.33%	0.06%
Energy	557.64	0.58%	4.54%	-0.09%
Financials	471.33	-0.13%	1.59%	-0.11%
Healthcare	983.52	-0.38%	2.84%	0.12%
Industrials	658.02	0.36%	3.17%	-0.27%
IT	1157.02	0.37%	4.60%	-0.25%
Materials	394.56	0.09%	4.12%	0.24%
Telecom	164.12	0.12%	-1.18%	-0.05%
Utilities	263.15	0.94%	-1.58%	1.94%
Real Estate	201.1	0.59%	-1.35%	-0.27%

**S&P 500 INDEX - 30 DAYS CHART**

**S&P 500 SUPPORT & RESISTANCE**


- Electronics makers and chemicals companies boosted Japanese stocks to a fresh 26-year high as the market reopened after a national holiday.
- U.S. stocks reversed earlier losses, rising for a fifth day. But the underlying tone is not as bullish as previous four sessions. Utilities and real estate, safety shares boasting high dividends, bounced back to lead the market. Banks slipped before earnings announcements later this week.
- European stocks advanced for a fourth day as a rally in basic resources companies offset losses in health-care firms.

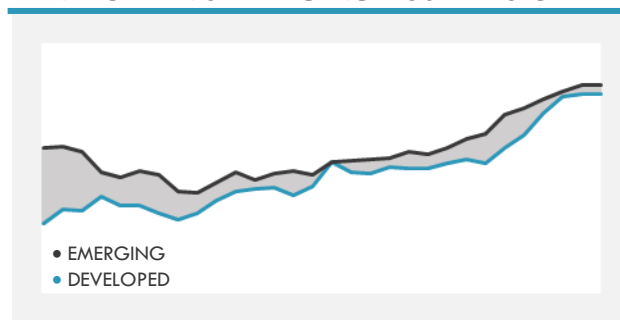
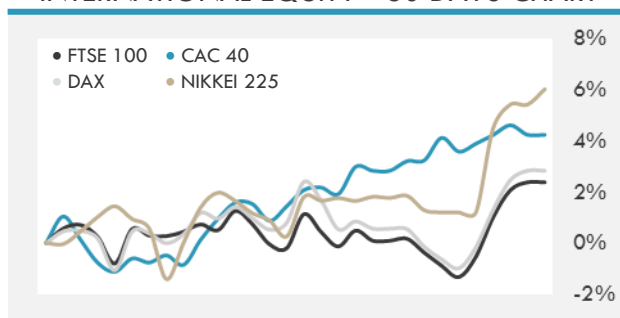
Source: Bloomberg

**INTERNATIONAL MARKETS INDICES**

	Last Price	Daily %	YTD %	Δ10D Vol
World	1288.92	0.11%	2.78%	-0.30%
Developed	2157.96	0.06%	2.59%	-0.16%
Emerging	1206.86	0.49%	4.18%	-1.28%
Frontier	3068.58	-0.36%	2.69%	1.21%
Europe	134.51	0.28%	2.36%	-0.24%
Latin America	2981.63	0.42%	5.43%	-0.27%
Asia Pacific	179.88	0.35%	3.49%	-1.02%

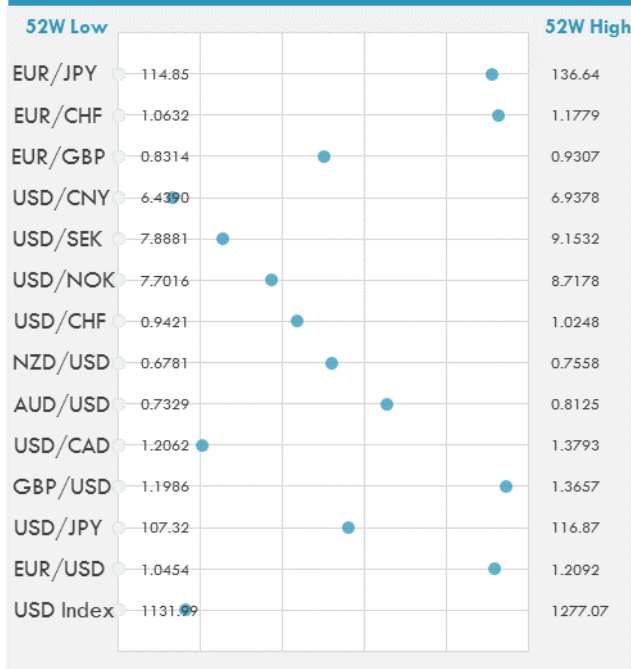
**INTERNATIONAL EQUITY INDICES**

	Last Price	Daily %	YTD %	Δ10D Vol
EuroStoxx 50	3616.45	0.24%	3.21%	-0.15%
FTSE 100	7696.51	-0.36%	0.11%	-0.81%
CAC 40	5487.42	0.30%	3.29%	-0.20%
DAX	13367.78	0.36%	3.48%	0.02%
Swiss SMI	9541.73	-0.16%	1.70%	-1.83%
Nikkei 225	23849.99	0.57%	4.77%	0.00%
CSI 300	4178.19	0.43%	3.66%	-0.38%

**DEVELOPED VS EMERGING - 30 DAYS CHART**

**INTERNATIONAL EQUITY - 30 DAYS CHART**


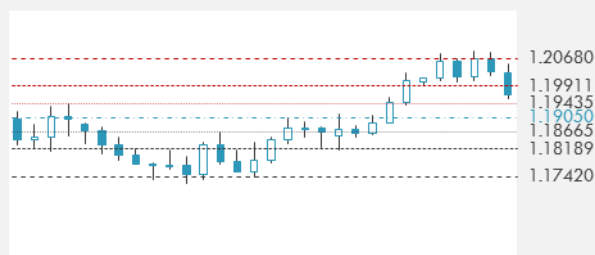
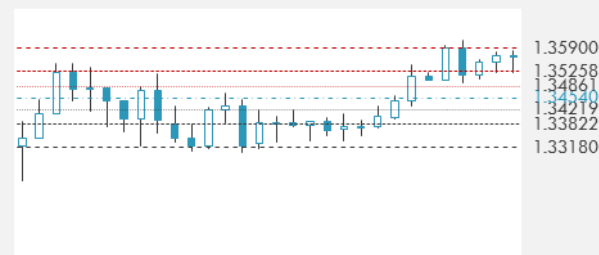
**FOREIGN EXCHANGE MARKET**

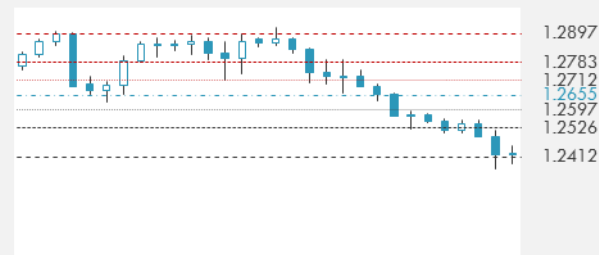
	Last Price	Daily %	Δ10D	Vol 25	ΔRR
<b>Major USD Cross Rate</b>					
USD Index	1155.53	-0.03%	-0.02%	-	
EUR/USD	1.1954	-0.11%	0.01%	0.055	
USD/JPY	112.66	-0.38%	0.37%	-0.103	
GBP/USD	1.3565	-0.02%	0.07%	-0.008	
USD/CAD	1.2416	-0.04%	0.12%	0.053	
AUD/USD	0.7849	0.09%	-0.61%	-0.015	
NZD/USD	0.7184	0.11%	0.03%	-0.053	
USD/CHF	0.9781	0.09%	0.02%	-0.320	
USD/NOK	8.0805	0.03%	0.24%	0.220	
USD/SEK	8.2095	0.09%	-1.08%	0.268	
USD/CNY	6.5040	0.06%	-0.02%	-0.040	
<b>Major EUR Cross Rate</b>					
EUR/GBP	0.88119	-0.10%	-0.09%	0.183	
EUR/CHF	1.16921	-0.01%	-0.01%	-0.198	
EUR/JPY	134.67	-0.50%	0.55%	-0.148	

**DISTANCE FROM 52 WEEKS LOW/HIGH**


- The yen climbed after the Bank of Japan reduced its purchases of super-long bonds, adding to speculation that the central bank may be looking to wind back its ultra-loose monetary policy.
- Emerging Asian currencies edged lower amid overnight strength in the dollar. The South Korean won was steady after the government's warning Monday against one-sided forex moves triggered declines. The MSCI EM Asia Index fluctuated, after five days of gains.

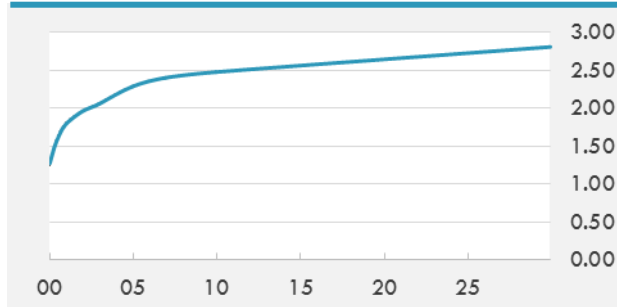
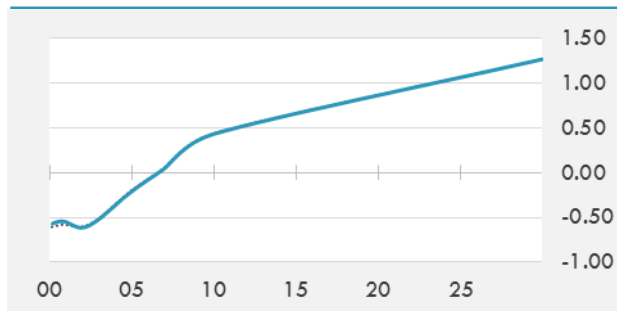
Source: Bloomberg

**EUR/USD 30 DAYS SUPPORT & RESISTANCE**

**GBP/USD 30 DAYS SUPPORT & RESISTANCE**

**USD/JPY 30 DAYS SUPPORT & RESISTANCE**

**USD/CAD 30 DAYS SUPPORT & RESISTANCE**


**GLOBAL BOND INDICES**

	Yield	ΔYield (in Bps)
<b>Benchmark Indices</b>		
US 10 Years Benchmark	2.48	0.004
EU 10 Years Benchmark	0.431	-0.008
UK 10 Years Benchmark	1.236	-0.008
<b>Sovereign Bonds</b>		
US Treasury Bond	2.26	0.002
Eurozone Sovereign Bond	0	0
Japan Sovereign Bond	-0.077	-0.002
<b>Corporate Bonds</b>		
US Corporate TR	3.313	-0.002
US High Yield Bond TR	5.516	-0.020
EUR Aggregate Corporate TR	0.719	-0.015
EUR High Yield TR	3.229	0.001
USD Emerging Market IG & HY	4.472	-0.013

**US TREASURIES YIELD CURVE**

**EUR GENERIC YIELD CURVE**


- Bets that the Bank of Japan may start to unwind its monetary easing may be accelerating, as indicated by a weakening relationship between the 10-year Treasury yield and the dollar-yen exchange rate.
- Long-end of the JGB under pressure after BOJ trimmed purchases in the sector, before heavy offers into the buying operations. Treasury futures steady, with bits of selling seen in cash market. Aussie bonds dip after building data surprised.

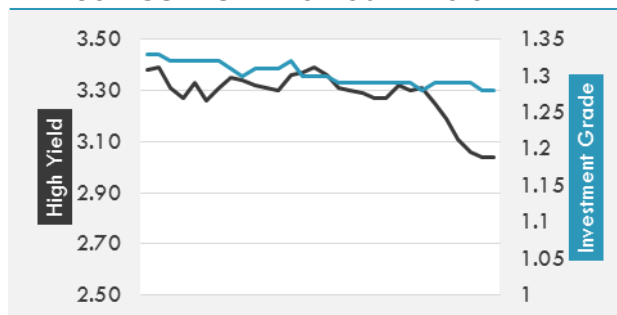
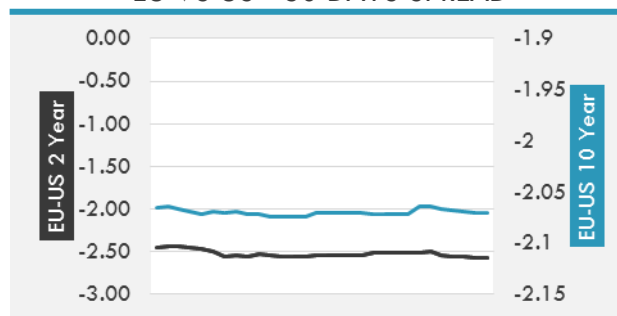
Source: Bloomberg

**OVERNIGHT RATES - SWAPS**

	Yield	ΔYield (in Bps)
3M USD LIBOR	1.70393	0.0000
3M EUR EURIBOR	-0.329	0.0000
3M GBP LIBOR	0.52125	0.0000
3Y USD SWAP	2.2399	-0.0053
5Y USD SWAP	2.3273	-0.0051
10Y USD SWAP	2.468	-0.0021
30Y USD SWAP	2.6101	-0.0006

**FIXED INCOME SPREADS**

	Spread	ΔSpread (in Bps)
USD 3M vs 10Y Spread	1.06597	(0.0065)
USD 2Y vs 10Y Spread	0.52	0.0076
USD IG Spread	1.28	(0.0100)
USD HY Spread	3.04	(0.0200)
EU vs US 10Y Spread	-2.0405	(0.0032)
EU vs US 2Y Spread	-2.5718	(0.0068)
EM vs Benchmark Spread	207.7	-

**USD CORPORATES - 30 DAYS SPREAD**

**EU VS US - 30 DAYS SPREAD**


**GLOBAL COMMODITIES MARKET**

	Last Price	Daily %
Commodity Index	87.69	-0.25%

**Energy**

WTI Crude Future	61.73	0.47%
Brent Crude Future	67.78	0.24%
NYMEX Gasoline	179.18	0.34%
NYMEX Heat Oil	204.54	-0.65%
ICE Gasoil	602.25	-0.45%
NYMEX Natural Gas	2.835	1.43%

**Precious Metals**

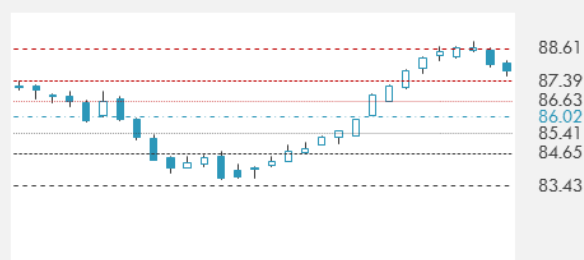
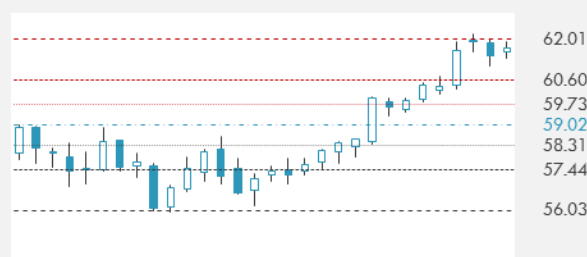
Gold Spot \$/Oz	1320.4	0.06%
Silver Spot \$/Oz	17.134	-0.51%
Platinum Spot \$/Oz	972.85	0.37%
Palladium Spot \$/Oz	1102.24	0.86%
Gold Future	1320.4	-0.14%
Silver Future	17.144	-0.82%
Platinum Future	976.4	0.12%
Palladium Future	1095.9	1.27%

**Base Metals**

LME Aluminum	2175	-1.25%
LME Copper	7125	0.06%
LME Zinc	3386	0.95%
LME Nickel	12535	0.08%
LME Lead	2604	2.52%
LME Tin	20000	0.13%

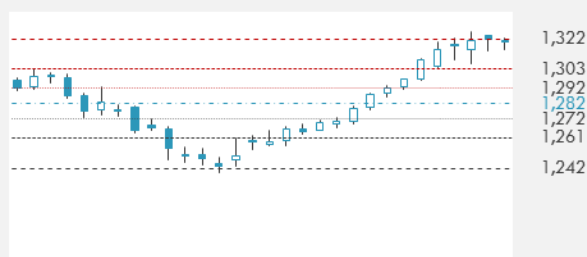
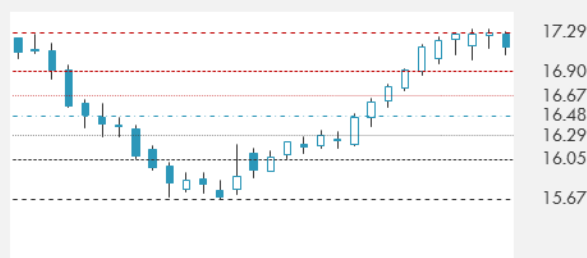
**Agricultural**

Corn CBT	347.25	-1.14%
Wheat CBT	427.75	-0.70%
Soybeans CBT	966.75	-0.41%
Bean Meal CBT	321.5	-0.12%
Rough Rice CBT	11.89	0.72%
MDE Palm Oil	2625	1.20%
Soybean CBT	33.54	-0.65%
Coffee ICE	125.15	-2.57%
Sugar #11 ICE	14.78	-1.99%
Cotton #2 ICE	78.14	0.17%
Cocoa ICE	1914	1.00%
Ethanol CME	1.305	-0.76%
Lumber CME	459.9	0.17%
Orange Juice ICE	138.65	0.47%
Live Cattle CME	117.225	-1.70%
Feeder Cattle CME	141.925	-0.04%
Lean Hogs CME	76.8	0.95%

**COMMODITY INDEX SUPPORT & RESISTANCE**

**WTI OIL 30 DAYS SUPPORT & RESISTANCE**


- Oil extended gains above \$62 a barrel before U.S. government data forecast to show crude stockpiles declined for an eighth week and as political tensions simmer in Iran, OPEC's third-biggest producer.

Source: Bloomberg

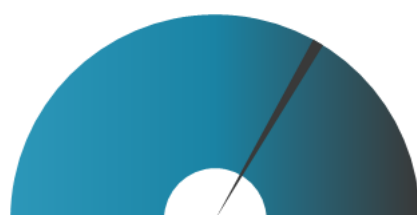
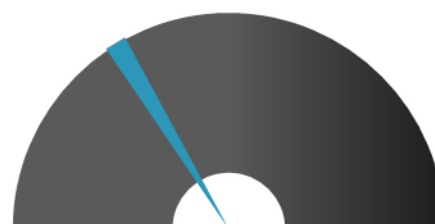
**GOLD 30 DAYS SUPPORT & RESISTANCE**

**SILVER 30 DAYS SUPPORT & RESISTANCE**


**TOP 10 WINNERS**

	Ticker	Last Price	Daily %
<b>S&amp;P 500 Stocks</b>			
SEAGATE TECHNOLO	STX	46	7.13
KOHL'S CORP	KSS	56.9	4.67
ALBEMARLE CORP	ALB	137.45	4.35
WESTERN UNION	WU	21.49	4.32
INTUITIVE SURGIC	ISRG	391.86	3.39
ADV MICRO DEVICE	AMD	12.28	3.37
ALIGN TECHNOLOGY	ALGN	248.9	3.25
CARDINAL HEALTH	CAH	65.22	3.16
NVIDIA CORP	NVDA	222	3.06
FLIR SYSTEMS	FLIR	49.67	2.94

**TOP 10 LOSERS**

	Ticker	Last Price	Daily %
<b>S&amp;P 500 Stocks</b>			
BIOGEN INC	BIIB	329.65	-3.75
L BRANDS INC	LB	48.64	-3.42
REGENERON PHARM	REGN	372.52	-3.27
ULTA BEAUTY INC	ULTA	231.14	-2.87
MATTEL INC	MAT	15.81	-2.77
ALEXION PHARM	ALXN	119.7	-2.52
MGM RESORTS INTE	MGM	33.1	-2.33
DELTA AIR LI	DAL	54.68	-2.30
NAVIENT CORP	NAVI	13.69	-2.28
HUMANA INC	HUM	258.55	-2.19

**S&P 500 DISTRIBUTION**

**WINNERS**
**LOSERS**
**S&P VOLATILITY INDEX**

**LOW VOLATILITY**
**HIGH VOLATILITY**

- Making further gains in the autonomous vehicle industry, Nvidia is partnering with UBER and Volkswagen on artificial intelligence platforms.
- With the aircraft's future in doubt, Airbus is offering an industrial partnership with China on the A380 if local airlines place orders for the world's largest passenger jet.
- A U.S. federal court has thrown out a class action lawsuit against Starbucks that alleged the company was cheating customers by under-filling drinks and overloading them with foam
- Ford plans this spring to offer a diesel version of its best-selling F-150, which will likely achieve 30 mpg highway fuel efficiency, a level comparable to some midsize cars.
- Saudi Aramco and some of the kingdom's biggest companies said they'll pay Saudi staff more money, matching a royal order that extended handouts to government workers amid rising prices.
- Aligning its strategy with peers ExxonMobil and Chevron, CEO Ben van Beurden told the FT that growth of Shell's oil and gas operations in the next decade will depend on shale production.
- SpaceX successfully launched a secret U.S. government payload called Zuma on Sunday and landed its rocket back on Earth.
- Facebook and Sony/ATV have signed a licensing deal that provides for the social network's users to upload and share videos from Sony artists on Facebook and Instagram.
- Western Union breaks higher again on more talk that the company is working with Ripple on accepting its blockchain payment.

**KEY ECONOMIC INDICATORS**

Country	Event	Surv (M)	Actual	Prior	Time
Canada	Housing Starts	211.0k	--	252.2k	15:15
Eurozone	Unemployment Rate	8.70%	--	8.80%	12:00
France	Trade Balance	-4700m	--	-4956m	9:45
Germany	Industrial Production SA MoM	1.80%	--	-1.40%	9:00
Germany	Industrial Production WDA YoY	3.90%	--	2.70%	9:00
Germany	Trade Balance	21.3b	--	18.9b	9:00
Germany	Exports SA MoM	1.20%	--	-0.40%	9:00
Germany	Current Account Balance	25.3b	--	18.1b	9:00
Germany	Imports SA MoM	0.40%	--	1.80%	9:00
Iran	CPI YoY	--	--	9.60%	
Iraq	CPI YoY	--	--	0.40%	
Japan	Labor Cash Earnings YoY	0.60%	0.90%	0.60%	2:00
Jordan	CPI YoY	--	--	3.33%	
Jordan	M1 Money Supply YoY	--	--	-1.13%	
Jordan	M2 Money Supply YoY	--	--	0.95%	
Russia	Reserve Fund	--	--	\$17.1b	
Russia	Wellbeing Fund	--	--	\$66.9b	
United Arab Emirates	Dubai Airport Cargo Volume YoY	--	--	-1.80%	
United States	NFIB Small Business Optimism	107.8	--	107.5	13:00
United States	DOE Short-Term Crude Outlook	--	--	52.77	19:00

Source: Bloomberg

**Banque BEMO sal**
**Head Office - Private and Corporate Banking**

 96 Pasteur Building, Pasteur Street, Medawar Area, P.O. Box: 16-6353, Beirut - Lebanon  
 Tel: + 961 1 568 250 Fax: + 961 1 568 266

**Wealth & Investment Management** [research@bemobank.com](mailto:research@bemobank.com)

 Beirut Central District Riad El Solh Square, Esseily Building Bloc A, 7th Floor Beirut - Lebanon  
 Tel: + 961 1 992 600 Fax: + 961 1 983 368  
[www.bemobank.com](http://www.bemobank.com)
**Disclaimer:**

This report is published for information purposes only. The information herein has been compiled from, or based upon sources considered to be reliable (Bloomberg, SeekingAlpha, DailyStar...), but we do not guarantee or assume responsibility for its completeness and accuracy. This document should not be construed as a solicitation to take part in any investment, or as constituting any representation or warranty on our part. This report is not to be relied upon in substitution for the exercise of specialists.

We may not have taken any steps to ensure that the securities referred to in this report are suitable for any particular investor. The investments and services contained or referred to herein are not purported to be exhaustive, any person considering an investment should seek specialist advice on the suitability of an investment.

Nothing in this report constitutes investment, legal, accounting or tax advice, or a representation that any investment or strategy is suitable or appropriate to your individual circumstances, or otherwise constitutes a personal recommendation. Clients understand that it is their responsibility to seek legal and/or tax advice regarding the legal and tax consequences of their investment transactions. The consequences of any action taken on the basis of information contained herein are solely the responsibility of the recipient.

Investment instruments are subject to risk, including possible loss of principal amount invested. Past performance should not be taken as an indication or guarantee of future performance, and no representation or warranty, express or implied, is made regarding future performance. The value of securities and financial instruments is subject to exchange rate fluctuation that may have a positive or adverse effect on the price or income of such securities or financial instruments. Some investments mentioned in this report may have a high level of volatility. High volatility investments may experience sudden and large falls in their value causing losses when that investment is realized. Some investments may not be readily realizable and it may be difficult to sell or realize those investments, similarly it may prove difficult to obtain reliable information about the value, or risks, to which such an investment is exposed.

This report may provide the addresses of websites or references. We have not reviewed any such site and takes no responsibility for the content contained therein. Such address or reference is provided solely for convenience and information. Accessing such website through this report shall be at the recipients own risk.