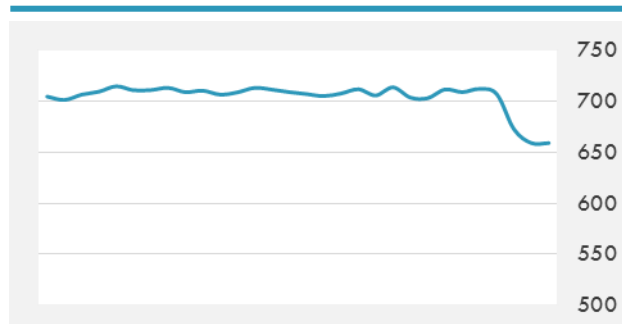
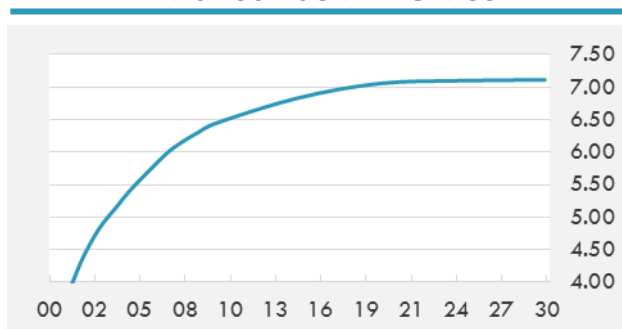


BEIRUT STOCK EXCHANGE

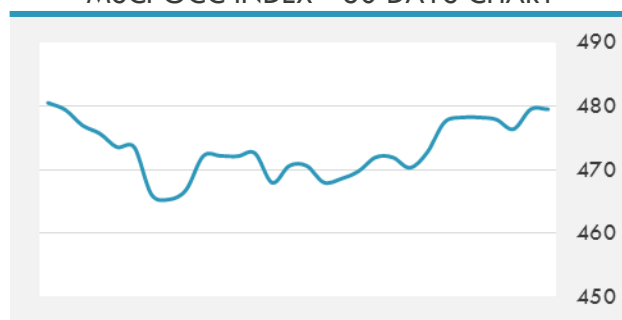
	Last	Daily %	YTD %	Dividend %
Development and Reconstruction				
Solidere A	8.35	-3.91%	-19.56%	1.18%
Solidere B	8.31	-3.93%	-20.86%	1.19%
Solidere GDR	8.7	0.00%	-13.00%	1.16%
Banking				
Audi Listed	6.5	-2.99%	-4.41%	7.67%
BLC Listed	0.99	0.00%	0.00%	0.00%
BOB Listed	18.8	0.00%	0.00%	3.17%
Byblos Listed	1.75	2.34%	2.94%	7.56%
BEMO Listed	1.4	0.00%	-17.65%	2.83%
BLOM Listed	11	0.00%	3.77%	9.01%
Trading				
RYMCO	3.25	0.00%	0.00%	3.69%
Industrial				
Holcim	11.58	-1.11%	-1.45%	7.32%
Ciments Blancs	1.57	0.00%	0.00%	0.00%

MSCI LEBANON INDEX - 30 DAYS CHART

LEBANESE USD SOVEREIGN CURVE


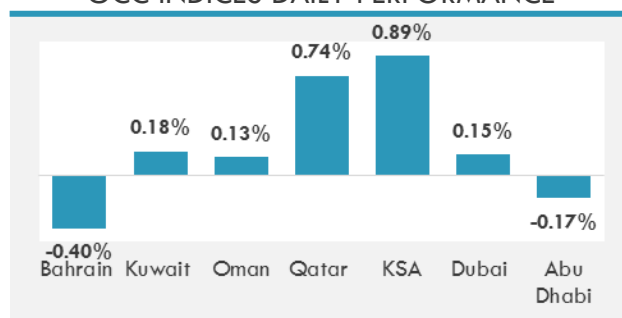
- Laws and regulations must be reformed in a way to prevent discrimination against women in accessing funds for starting their businesses, said Jean Ogasapian, state minister for women's affairs.
- Lebanon is seeking \$10-\$12 billion in infrastructure investment from the international community over the next seven years to cope with the huge presence of Syrian refugees in the country, Prime Minister Saad Hariri's adviser on Syrian refugees said Wednesday.

GCC EQUITY INDICES

	Last Price	Daily %	YTD %
Bahrain	1357.29	-0.40%	11.21%
Kuwait	7042.12	0.18%	22.53%
Oman	5557.36	0.13%	-3.90%
Qatar	10489.28	0.74%	0.50%
KSA	7099.13	0.89%	-1.54%
Dubai	3540.6	0.15%	0.08%
Abu Dhabi	4555.06	-0.17%	0.14%

MSCI GCC INDEX - 30 DAYS CHART

LOCAL/GCC FOREIGN EXCHANGE

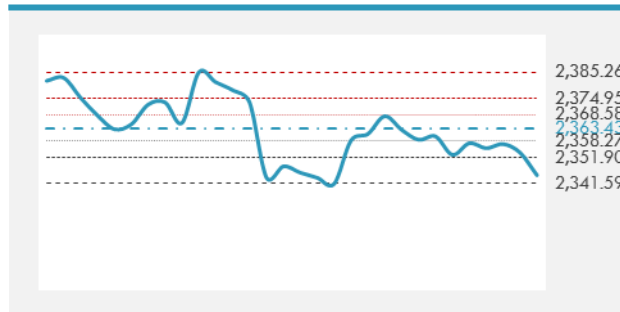
	Cross	Last Price
Lebanese Pound Spot	USD/LBP	1511.32
Bahraini Dinar Spot	USD/BHD	0.37703
Kuwaiti Dinar Spot	USD/KWD	0.30473
Omani Rial Spot	USD/OMR	0.38502
Qatari Riyal Spot	USD/QAR	3.6405
Saudi Riyal Spot	USD/SAR	3.7504
UAE Dirham Spot	USD/AED	3.6728

GCC INDICES DAILY PERFORMANCE


UNITED STATES EQUITY MARKET INDICES

	Last Price	Daily %	YTD %	Δ10D Vol
Major Indices				
Dow Jones	20591.86	-0.29%	4.20%	-0.43%
S&P 500	2344.93	-0.38%	4.74%	-0.21%
Nasdaq	5836.16	-0.52%	8.42%	0.10%
Sectors Indices				
Discretionary	693.85	-0.40%	7.10%	0.02%
Staples	566.81	0.45%	6.59%	0.42%
Energy	518.9	-0.34%	-6.42%	0.15%
Financials	385.2	-0.90%	-0.34%	-3.14%
Healthcare	857.23	0.03%	7.57%	0.03%
Industrials	554.68	-1.32%	3.09%	3.50%
IT	892.07	-0.40%	10.41%	-0.19%
Materials	324.99	-1.22%	4.11%	3.45%
Telecom	166.35	0.57%	-5.81%	0.32%
Utilities	263.11	0.74%	6.60%	-0.37%
Real Estate	198.53	-0.14%	4.36%	0.48%

S&P 500 INDEX - 30 DAYS CHART

S&P 500 SUPPORT & RESISTANCE


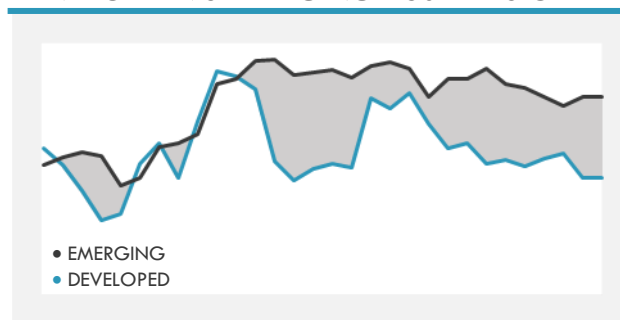
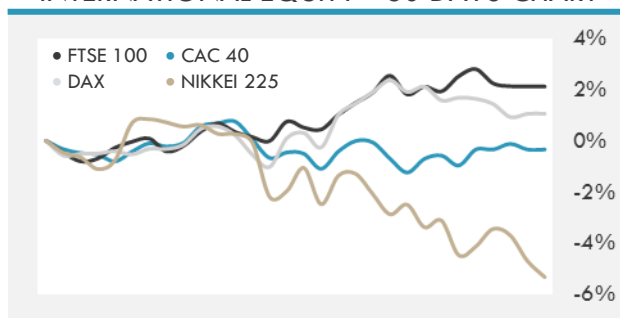
- U.S. stocks fell as investors assessed geopolitical developments from France to Russia and Korea, as well as comments from President Trump on the future of Fed Chair Janet Yellen.
- European stocks advanced to a 16-month high as investors assessed earnings reports and gains in defensive shares outweighed declines in miners and banks.
- Most Asian stocks dropped as miners plunged amid an iron ore selloff, while a stronger yen pulled down Japanese shares.

INTERNATIONAL MARKETS INDICES

	Last Price	Daily %	YTD %	Δ10D Vol
World	1091.52	-0.19%	5.87%	-0.22%
Developed	1842.98	-0.27%	5.24%	-0.16%
Emerging	958.2	0.39%	11.13%	0.55%
Frontier	2633.61	0.07%	8.90%	-0.05%
Europe	129.08	0.16%	5.37%	-0.81%
Latin America	2610.84	-0.66%	11.54%	0.23%
Asia Pacific	146.78	-0.04%	8.69%	-0.30%

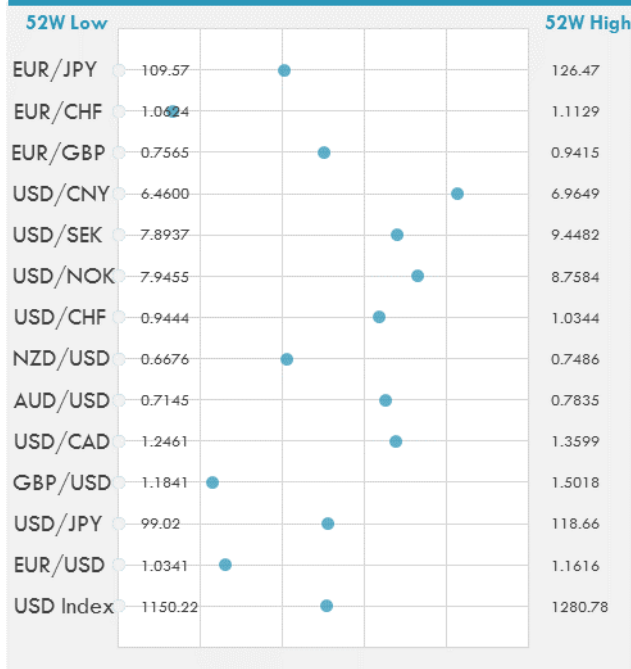
INTERNATIONAL EQUITY INDICES

	Last Price	Daily %	YTD %	Δ10D Vol
EuroStoxx 50	3468.51	-0.04%	5.41%	-0.10%
FTSE 100	7348.99	-0.22%	2.89%	0.09%
CAC 40	5101.11	-0.01%	4.91%	-0.26%
DAX	12154.7	0.13%	5.87%	-0.60%
Swiss SMI	8663.77	0.26%	5.40%	-0.67%
Nikkei 225	18395.39	-0.85%	-3.76%	0.42%
CSI 300	3513.41	0.11%	6.14%	-0.03%

DEVELOPED VS EMERGING - 30 DAYS CHART

INTERNATIONAL EQUITY - 30 DAYS CHART


FOREIGN EXCHANGE MARKET

	Last Price	Daily %	Δ10D	Vol 25	ΔRR
Major Indices					
USD Index	1217.09	-0.24%	0.13%	-	
EUR/USD	1.0666	0.01%	-0.15%	-0.350	
USD/JPY	109.04	0.01%	0.07%	-1.360	
GBP/USD	1.256	0.16%	-0.74%	-0.280	
USD/CAD	1.3236	-0.14%	-0.01%	0.170	
AUD/USD	0.7585	0.84%	2.47%	-0.590	
NZD/USD	0.6996	0.45%	0.65%	-0.523	
USD/CHF	1.0021	-0.07%	-0.05%	-0.138	
USD/NOK	8.5417	-0.09%	-0.62%	0.455	
USD/SEK	8.9542	-0.25%	-0.03%	0.268	
USD/CNY	6.8793	-0.18%	0.09%	-0.085	
Major EUR Cross Rate					
EUR/GBP	0.84926	-0.15%	-1.65%	-0.038	
EUR/CHF	1.06888	-0.05%	0.02%	-0.195	
EUR/JPY	116.3	0.03%	-0.25%	-1.400	

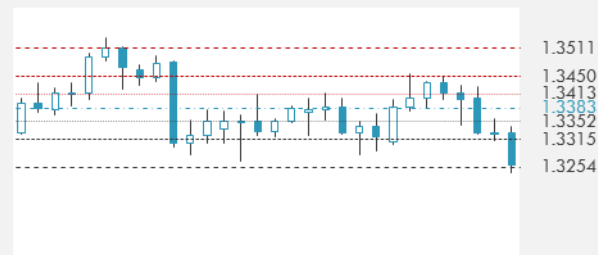
DISTANCE FROM 52 WEEKS LOW/HIGH


- Australia's dollar headed for its biggest one-day gain in a month after data showing a surge in employment and improving Chinese imports bolstered confidence in the economy.
- The dollar extended declines after U.S. President Donald Trump said that the greenback was too strong. The Australian dollar rose after employers added more jobs than economists forecast.
- Yen hit a 5-month high on comments from U.S. President Donald Trump that the dollar was too strong.

EUR/USD 30 DAYS SUPPORT & RESISTANCE

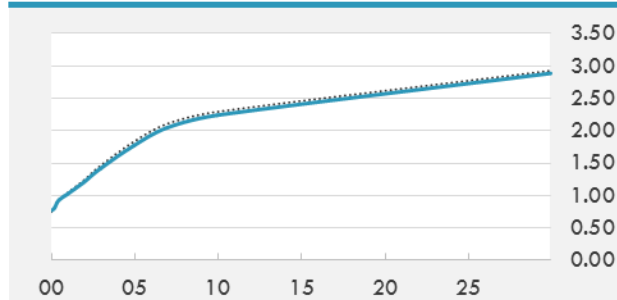
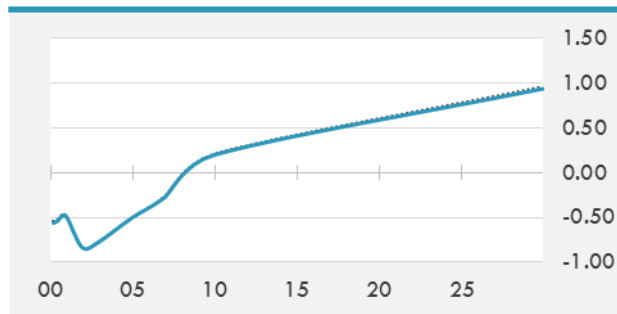
GBP/USD 30 DAYS SUPPORT & RESISTANCE

USD/JPY 30 DAYS SUPPORT & RESISTANCE

USD/CAD 30 DAYS SUPPORT & RESISTANCE


GLOBAL BOND INDICES

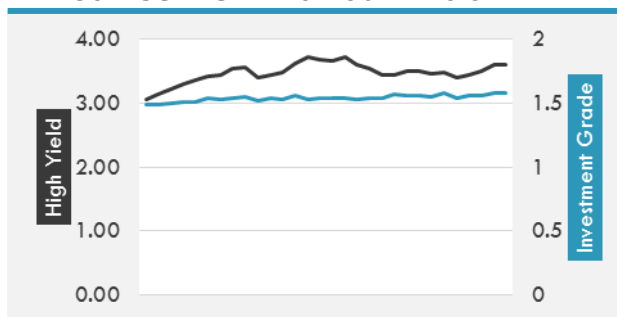
	Yield	ΔYield (in Bps)
Benchmark Indices		
US 10 Years Benchmark	2.2392	-0.057
EU 10 Years Benchmark	0.198	-0.006
UK 10 Years Benchmark	1.05	-0.003
Sovereign Bonds		
US Treasury Bond	1.843	-0.001
Eurozone Sovereign Bond	0.674	0.002
U.K. Sovereign Bond	1.011	-0.005
Japan Sovereign Bond	0.08	-0.01
USD Emerging Sovereign Bond	4.643	0.006
Corporate Bonds		
US Investment Grade Bond	3.264	0
US High Yield Bond	5.856	0.031
EUR Investment Grade Bond	0.661	0.007
EUR High Yield Bond	2.964	0.009
USD Emerging Market IG & HY	4.768	0.008

US TREASURIES YIELD CURVE

EUR GENERIC YIELD CURVE


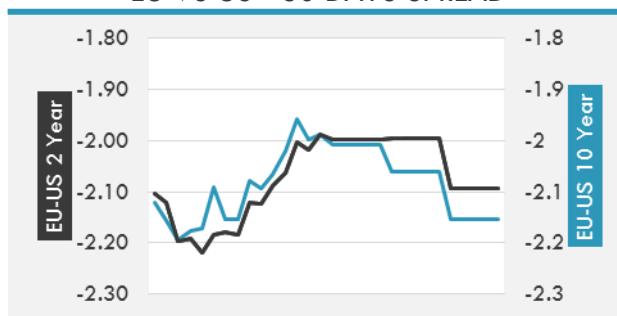
- Treasuries rallied, with the benchmark 10-year yield tumbling to the lowest level of 2017, after President Trump said he likes the Federal Reserve's low-interest-rate policy and is leaving open the possibility of renominating Chair Janet Yellen.
- Reversal in OATs (French Government Bonds) with 10-year spread tighter as recent narrowing of Macron vs Fillon gains some importance, while bonds trade in tight range.

OVERNIGHT RATES - SWAPS

	Yield	ΔYield (in Bps)
3M USD LIBOR	1.15511	0.0000
3M EUR EURIBOR	-0.332	0.0000
3M GBP LIBOR	0.33975	0.0000
3Y USD SWAP	1.6656	-0.0463
5Y USD SWAP	1.8755	-0.0582
10Y USD SWAP	2.2036	-0.0538
30Y USD SWAP	2.4831	-0.0451

USD CORPORATES - 30 DAYS SPREAD

FIXED INCOME SPREADS

	Spread	ΔSpread (in Bps)
USD 3M vs 10Y Spread	1.43152	(0.0519)
USD 2Y vs 10Y Spread	1.03364	(0.0247)
USD IG Spread	1.58	0.0200
USD HY Spread	3.61	0.1100
EU vs US 10Y Spread	-2.1543	-
EU vs US 2Y Spread	-2.093	-
EM vs Benchmark Spread	259.8	5.800

EU VS US - 30 DAYS SPREAD


GLOBAL COMMODITIES MARKET

	Last Price	Daily %
Commodity Index	85.88	-0.14%

Energy

WTI Crude Future	53.11	-0.54%
Brent Crude Future	55.86	-0.66%
NYMEX Gasoline	174.17	-0.91%
NYMEX Heat Oil	165.2	0.08%
ICE Gasoil	498.5	0.81%
NYMEX Natural Gas	3.187	1.17%

Precious Metals

Gold Spot \$/Oz	1286.78	0.94%
Silver Spot \$/Oz	18.493	0.84%
Platinum Spot \$/Oz	973.53	0.29%
Palladium Spot \$/Oz	801.65	-0.55%
Gold Future	1278.1	0.31%
Silver Future	18.3	0.25%
Platinum Future	967.9	-0.17%
Palladium Future	796.3	-0.85%

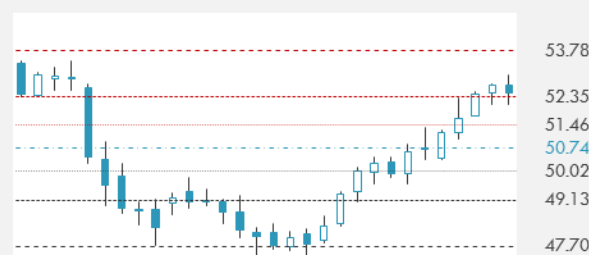
Base Metals

LME Aluminum	1898	-1.20%
LME Copper	5628	-2.41%
LME Zinc	2602	1.25%
LME Nickel	9735	-1.07%
LME Lead	2242	-0.36%
LME Tin	19405	-2.98%

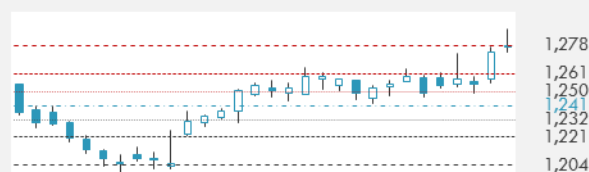
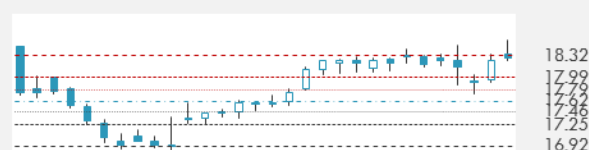
Agricultural

Corn CBT	376	0.60%
Wheat CBT	446.25	-0.28%
Soybeans CBT	947.75	0.90%
Bean Meal CBT	317	1.12%
Rough Rice CBT	10.18	-0.83%
MDE Palm Oil	2589	-0.88%
Soybean CBT	31.46	0.48%
Coffee ICE	140.6	-1.26%
Sugar #11 ICE	16.74	-0.12%
Cotton #2 ICE	76.23	-0.26%
Cocoa ICE	1967	-1.06%
Ethanol CME	1.672	1.33%
Lumber CME	393.5	-2.48%
Orange Juice ICE	161.15	-0.37%
Live Cattle CME	114.35	0.57%
Feeder Cattle CME	139.95	0.56%
Lean Hogs CME	72.275	-2.33%

COMMODITY INDEX SUPPORT & RESISTANCE

WTI OIL 30 DAYS SUPPORT & RESISTANCE


- Just as signs of a tighter global oil market start to emerge, U.S. crude producers are giving investors reason to worry.
- Gold rises to highest since November as dollar weakens after President Donald Trump said greenback too strong and he won't brand China a currency manipulator.

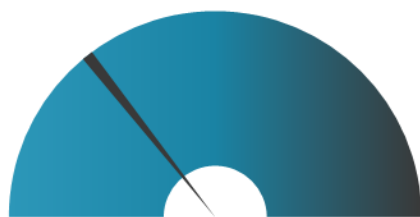
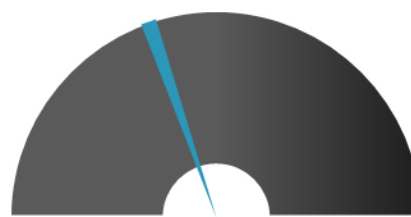
GOLD 30 DAYS SUPPORT & RESISTANCE

SILVER 30 DAYS SUPPORT & RESISTANCE


TOP 10 WINNERS

	Ticker	Last Price	Daily %
S&P 500 Stocks			
HP INC	HPQ	18.02	2.74
TYSON FOODS-A	TSN	64.26	2.23
WHOLE FOODS MKT	WFM	34.12	1.70
PEPSICO INC	PEP	113.61	1.68
MALLINCKRODT	MNK	44.3	1.56
WYNDHAM WORLD	WYN	87.12	1.54
SCANA CORP	SCG	66.22	1.41
COTY INC-CL A	COTY	17.6	1.27
HANESBRANDS INC	HBI	21.11	1.25
KRAFT HEINZ CO/T	KHC	91.93	1.21

TOP 10 LOSERS

	Ticker	Last Price	Daily %
S&P 500 Stocks			
GOODYEAR TIRE	GT	34.39	-3.51
QUALCOMM INC	QCOM	53.39	-3.54
TRANSOCEAN LTD	RIG	12.07	-3.67
ROCKWELL AUTOMAT	ROK	150.23	-3.77
UNITED RENTALS	URI	121.13	-3.81
BROADCOM LTD	AVGO	209.2	-3.84
NUCOR CORP	NUE	57.88	-4.33
FREEMPORT-MCMORAN	FCX	12.88	-5.43
FASTENAL CO	FAST	46.29	-8.05
TRACTOR SUPPLY	TSCO	64.61	-8.32

S&P 500 DISTRIBUTION

WINNERS
LOSERS
S&P VOLATILITY INDEX

LOW VOLATILITY
HIGH VOLATILITY

- With a U.S. carrier group headed to the Korean peninsula, China's President Xi Jinping and President Trump spoke by telephone about pursuing a peaceful resolution to increasing tensions with North Korea.
- In an effort to iterate on its e-commerce offerings and keep up with Amazon.com, Wal-Mart says it will now offer discounts on items that customers order online and pick up in stores.
- Tesla is expected to appoint two independent directors after being pressed by influential investors, including the California State Teachers' Retirement System.
- Volkswagen plans to build a new SUV at its plant in Chattanooga, according to VW Group of America's Hinrich Woebcken.
- Talks about uniting the rail operations of Siemens and Bombardier are being complicated by the desire of both companies to keep control of a merged business, Reuters reports, citing sources close to the situation.
- Facebook Messenger now has 1.2B monthly active users, according to CNBC, roughly the same as WhatsApp. Assuming a modest \$25 per MAU valuation, The Street's Eric Johnsa notes the combined platforms would be worth \$60B.
- Uber lost another top exec this week when communications leader Rachel Whetstone resigned.
- General Motors plans to work off some its extra inventory by shutting down various U.S. plants for a combined ten weeks in the second half of the year.
- The Tesla Model S stacked up well in a comparison of the selling times of used luxury models, conducted by Autolist.com.

KEY ECONOMIC INDICATORS

Country	Event	Surv(M)	Actual	Prior	Time
China	Money Supply M2 YoY	11.10%	--	11.10%	
China	Trade Balance	\$12.50b	\$23.93b	-\$9.15b	6:06
China	Exports YoY	4.30%	16.40%	-1.30%	6:06
France	CPI YoY	1.10%	1.10%	1.10%	9:45
France	CPI EU Harmonized YoY	1.40%	1.40%	1.40%	9:45
France	CPI MoM	0.60%	0.60%	0.60%	9:45
France	CPI EU Harmonized MoM	0.70%	0.70%	0.70%	9:45
Germany	CPI YoY	1.60%	1.60%	1.60%	9:00
Germany	CPI MoM	0.20%	0.20%	0.20%	9:00
Germany	CPI EU Harmonized YoY	1.50%	1.50%	1.50%	9:00
Germany	CPI EU Harmonized MoM	0.10%	0.10%	0.10%	9:00
Italy	CPI EU Harmonized YoY	1.30%	--	1.30%	11:00
Japan	Money Stock M2 YoY	4.20%	4.30%	4.20%	2:50
Japan	Money Stock M3 YoY	3.60%	3.60%	3.60%	2:50
United States	Initial Jobless Claims	245k	--	234k	15:30
United States	U. of Mich. Sentiment	96.5	--	96.9	17:00
United States	PPI Final Demand MoM	0.00%	--	0.30%	15:30
United States	PPI Final Demand YoY	2.40%	--	2.20%	15:30
United States	PPI Ex Food and Energy MoM	0.20%	--	0.30%	15:30
United States	Continuing Claims	2024k	--	2028k	15:30

Banque BEMO sal

Head Office - Private and Corporate Banking

96 Pasteur Building, Pasteur Street, Medawar Area, P.O. Box: 16-6353, Beirut - Lebanon
Tel: + 961 1 568 250 Fax: + 961 1 568 266

Investment & Research research@bemobank.com

Beirut Central District Riad El Solh Square, Esseily Building Bloc A, 7th Floor Beirut - Lebanon
Tel: + 961 1 992 600 Fax: + 961 1 983 368
www.bemobank.com

Disclaimer:

This report is published for information purposes only. The information herein has been compiled from, or based upon sources considered to be reliable (Bloomberg, SeekingAlpha, DailyStar...), but we do not guarantee or assume responsibility for its completeness and accuracy. This document should not be construed as a solicitation to take part in any investment, or as constituting any representation or warranty on our part. This report is not to be relied upon in substitution for the exercise of specialists.

We may not have taken any steps to ensure that the securities referred to in this report are suitable for any particular investor. The investments and services contained or referred to herein are not purported to be exhaustive, any person considering an investment should seek specialist advice on the suitability of an investment.

Nothing in this report constitutes investment, legal, accounting or tax advice, or a representation that any investment or strategy is suitable or appropriate to your individual circumstances, or otherwise constitutes a personal recommendation. Clients understand that it is their responsibility to seek legal and/or tax advice regarding the legal and tax consequences of their investment transactions. The consequences of any action taken on the basis of information contained herein are solely the responsibility of the recipient.

Investment instruments are subject to risk, including possible loss of principal amount invested. Past performance should not be taken as an indication or guarantee of future performance, and no representation or warranty, express or implied, is made regarding future performance. The value of securities and financial instruments is subject to exchange rate fluctuation that may have a positive or adverse effect on the price or income of such securities or financial instruments. Some investments mentioned in this report may have a high level of volatility. High volatility investments may experience sudden and large falls in their value causing losses when that investment is realized. Some investments may not be readily realizable and it may be difficult to sell or realize those investments, similarly it may prove difficult to obtain reliable information about the value, or risks, to which such an investment is exposed.

This report may provide the addresses of websites or references. We have not reviewed any such site and takes no responsibility for the content contained therein. Such address or reference is provided solely for convenience and information. Accessing such website through this report shall be at the recipients own risk.