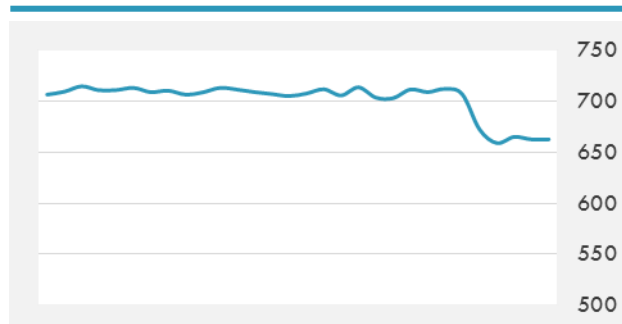
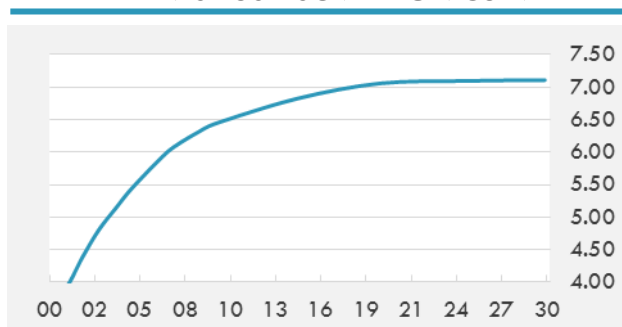


BEIRUT STOCK EXCHANGE

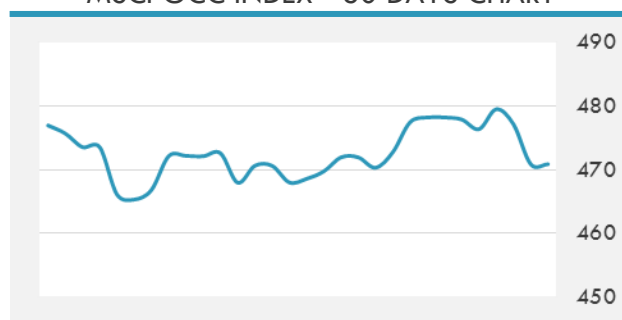
	Last	Daily %	YTD %	Dividend %
Development and Reconstruction				
Solidere A	8.51	-0.70%	-18.02%	1.16%
Solidere B	8.33	-1.88%	-20.67%	1.18%
Solidere GDR	8.7	0.00%	-13.00%	1.16%
Banking				
Audi Listed	6.5	0.00%	-4.41%	7.67%
BLC Listed	0.99	0.00%	0.00%	0.00%
BOB Listed	18.8	0.00%	0.00%	3.17%
Byblos Listed	1.75	0.00%	2.94%	7.56%
BEMO Listed	1.7	0.00%	0.00%	2.33%
BLOM Listed	11	0.00%	3.77%	9.01%
Trading				
RYMCO	3.25	0.00%	0.00%	3.69%
Industrial				
Holcim	11.58	0.00%	-1.45%	7.32%
Ciments Blancs	1.57	0.00%	0.00%	0.00%

MSCI LEBANON INDEX - 30 DAYS CHART

LEBANESE USD SOVEREIGN CURVE


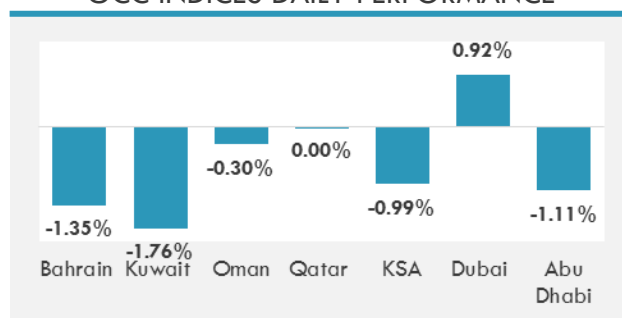
- Lebanon's balance of payment recorded a surplus of \$509 million in the first two months of 2017 thanks to a 57-percent increase in the financial inflows to the country in the same period, according to Bank Audi's Lebanon Weekly Monitor.
- A high ranking Lebanese delegation paid a visit to Moscow in a bid to increase the volume of trade and attract Russian investments.
- Finance Minister Mohammed Al Jadaan said Saudi Arabia is likely to resume domestic government debt issues within a couple of months.

GCC EQUITY INDICES

	Last Price	Daily %	YTD %
Bahrain	1337.86	-1.35%	9.62%
Kuwait	6884.73	-1.76%	19.92%
Oman	5528.06	-0.30%	-4.40%
Qatar	10336.3	0.00%	-0.96%
KSA	6942.38	-0.99%	-3.72%
Dubai	3495.82	0.92%	-1.31%
Abu Dhabi	4494.31	-1.11%	-1.02%

MSCI GCC INDEX - 30 DAYS CHART

LOCAL/GCC FOREIGN EXCHANGE

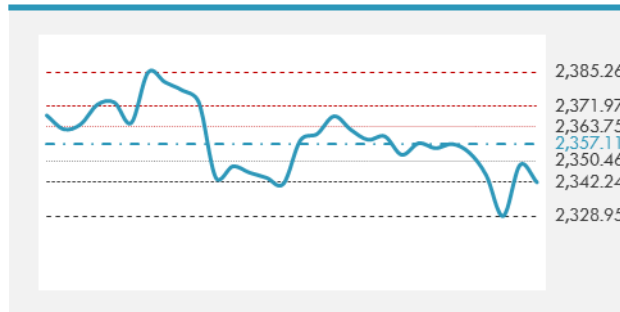
	Cross	Last Price
Lebanese Pound Spot	USD/LBP	1512
Bahraini Dinar Spot	USD/BHD	0.37699
Kuwaiti Dinar Spot	USD/KWD	0.30456
Omani Rial Spot	USD/OMR	0.385
Qatari Riyal Spot	USD/QAR	3.6412
Saudi Riyal Spot	USD/SAR	3.7503
UAE Dirham Spot	USD/AED	3.673

GCC INDICES DAILY PERFORMANCE


UNITED STATES EQUITY MARKET INDICES

	Last Price	Daily %	YTD %	Δ10D Vol
Major Indices				
Dow Jones	20523.28	-0.55%	3.85%	0.46%
S&P 500	2342.19	-0.29%	4.62%	0.09%
Nasdaq	5849.471	-0.12%	8.66%	-0.04%
Sectors Indices				
Discretionary	696.15	0.04%	7.46%	-0.03%
Staples	570.72	0.51%	7.32%	0.31%
Energy	505.94	-0.87%	-8.76%	-0.25%
Financials	383.27	-0.83%	-0.84%	0.42%
Healthcare	848.88	-1.01%	6.52%	2.82%
Industrials	555.03	-0.27%	3.15%	-0.03%
IT	896.64	-0.08%	10.98%	-0.02%
Materials	323.78	-0.12%	3.72%	-0.45%
Telecom	166.09	0.24%	-5.96%	-0.13%
Utilities	263.89	0.16%	6.91%	-0.09%
Real Estate	200.92	0.27%	5.62%	-0.82%

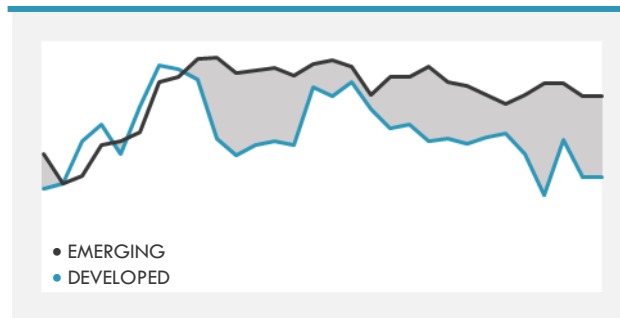
S&P 500 INDEX - 30 DAYS CHART

S&P 500 SUPPORT & RESISTANCE


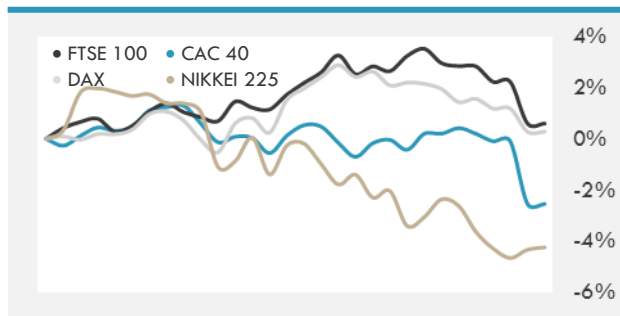
- Asian stocks fell as energy companies led declines amid lower oil prices for a third day. Hong Kong and China equities extended declines as a gauge of small-cap shares headed for its lowest close since Sept. 2015.
- U.S. stocks fell, mirroring a drop in global shares, as commodity prices retreated and Goldman Sachs Group Inc. weighed on financial companies.
- U.K. equities tumbled after Prime Minister Theresa May called for a snap election, with European stocks in a broad decline as markets reopened after the Easter holiday.

INTERNATIONAL MARKETS INDICES

	Last Price	Daily %	YTD %	Δ10D Vol
World	1088.46	-0.48%	5.57%	0.57%
Developed	1837.34	-0.48%	4.92%	0.44%
Emerging	957.7	-0.52%	11.07%	-0.13%
Frontier	2611.1	-0.25%	7.97%	-0.89%
Europe	127.12	-1.21%	3.77%	4.51%
Latin America	2654.17	0.12%	13.39%	0.05%
Asia Pacific	146.18	-0.50%	8.25%	0.41%

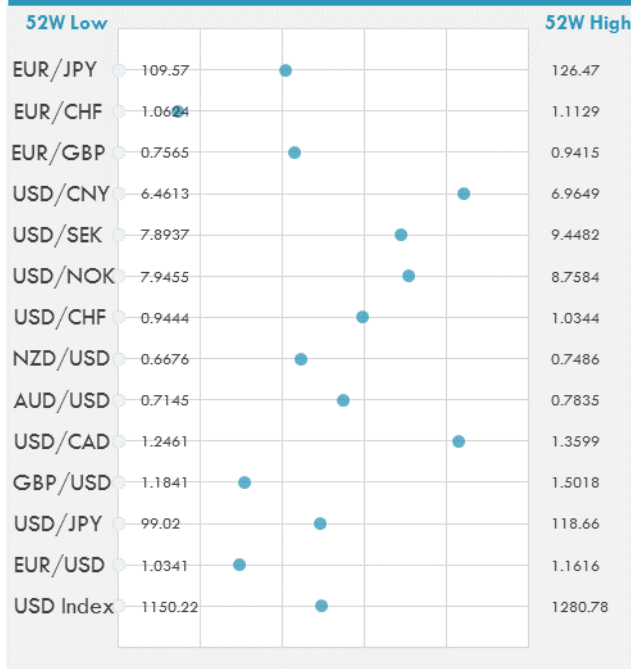
DEVELOPED VS EMERGING - 30 DAYS CHART

INTERNATIONAL EQUITY INDICES

	Last Price	Daily %	YTD %	Δ10D Vol
EuroStoxx 50	3409.78	-1.12%	3.62%	1.10%
FTSE 100	7147.5	-2.46%	0.07%	8.30%
CAC 40	4990.25	-1.59%	2.63%	3.28%
DAX	12000.44	-0.90%	4.52%	1.27%
Swiss SMI	8529.28	-1.16%	3.76%	3.24%
Nikkei 225	18456.58	0.21%	-3.44%	0.12%
CSI 300	3428.22	-0.99%	3.57%	-3.56%

INTERNATIONAL EQUITY - 30 DAYS CHART


FOREIGN EXCHANGE MARKET

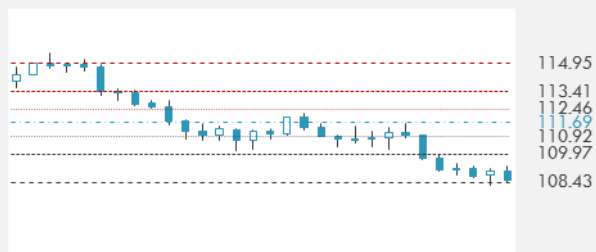
	Last Price	Daily %	Δ10D	Vol 25	ΔRR
Major Indices					
USD Index	1214.71	0.14%	-0.08%	-	
EUR/USD	1.0718	-0.11%	-0.07%	-4.000	
USD/JPY	108.68	0.23%	0.22%	-3.395	
GBP/USD	1.2824	-0.13%	0.03%	-0.253	
USD/CAD	1.3401	0.16%	0.04%	0.445	
AUD/USD	0.7522	-0.50%	0.36%	-1.020	
NZD/USD	0.7037	-0.09%	0.14%	-0.790	
USD/CHF	0.9979	0.16%	0.14%	-0.798	
USD/NOK	8.5196	0.10%	-0.10%	2.728	
USD/SEK	8.9625	0.08%	-0.31%	0.098	
USD/CNY	6.8845	0.04%	-0.01%	0.035	
Major EUR Cross Rate					
EUR/GBP	0.83573	0.02%	0.08%	-3.023	
EUR/CHF	1.06956	0.05%	-0.19%	-2.248	
EUR/JPY	116.48	0.11%	0.13%	-5.950	

DISTANCE FROM 52 WEEKS LOW/HIGH


- Australia's dollar fell for a second day as iron ore extended declines and falling equity markets sapped demand for higher-yielding assets.
- The pound extended gains made during the European session, rising to its highest since early October at 1.2905, after U.K. PM Theresa May announced a snap election for June; the surge put fresh pressure on the dollar, which stayed near session lows.
- The dollar pared its gains after comments from U.S. Treasury Secretary Steven Mnuchin, while the euro rose a third day on the back of investors trimming some of their short exposure.

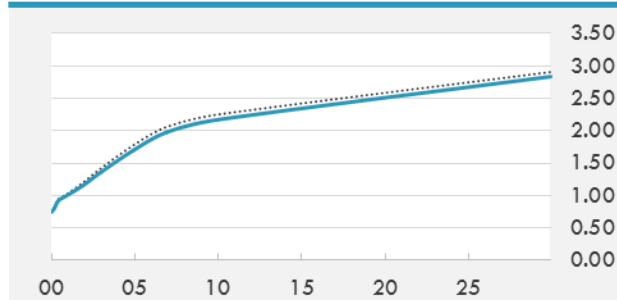
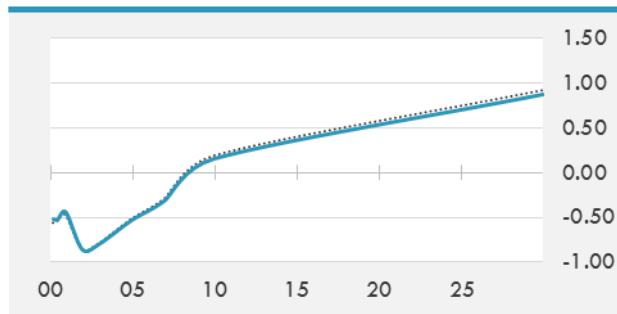
EUR/USD 30 DAYS SUPPORT & RESISTANCE

GBP/USD 30 DAYS SUPPORT & RESISTANCE

USD/JPY 30 DAYS SUPPORT & RESISTANCE

USD/CAD 30 DAYS SUPPORT & RESISTANCE


GLOBAL BOND INDICES

	Yield	ΔYield (in Bps)
Benchmark Indices		
US 10 Years Benchmark	2.1682	-0.069
EU 10 Years Benchmark	0.156	-0.031
UK 10 Years Benchmark	1.014	-0.029
Sovereign Bonds		
US Treasury Bond	1.746	-0.045
Eurozone Sovereign Bond	0.649	-0.024
U.K. Sovereign Bond	0.986	-0.028
Japan Sovereign Bond	0.07	-0.009
USD Emerging Sovereign Bond	4.586	-0.037
Corporate Bonds		
US Investment Grade Bond	3.178	-0.04
US High Yield Bond	5.891	0.029
EUR Investment Grade Bond	0.634	-0.015
EUR High Yield Bond	2.875	-0.081
USD Emerging Market IG & HY	4.724	-0.021

US TREASURIES YIELD CURVE

EUR GENERIC YIELD CURVE


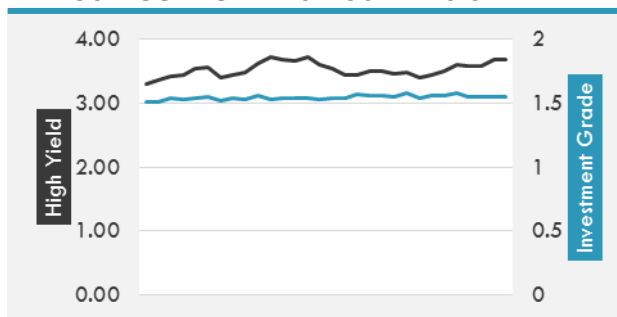
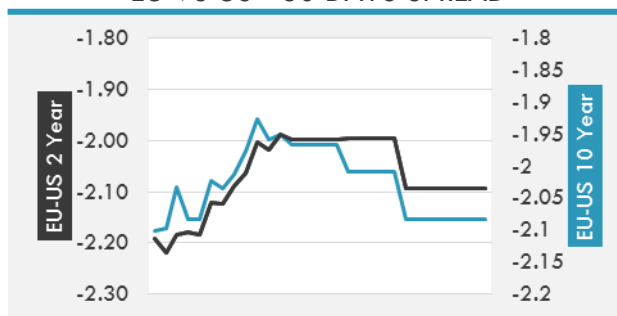
- Treasuries rose Tuesday, sending most yields to their lowest levels of 2017, as markets continued to be driven by declining expectations for tax reform as well as geopolitical concerns.
- Bund downside interest increased while peripheral EGB spreads tightened with Mélenchon unable to close his first-round gap further.
- Gilt futures pared drop after U.K. PM May announced snap general election to trade marginally higher

OVERNIGHT RATES - SWAPS

	Yield	ΔYield (in Bps)
3M USD LIBOR	1.15844	0.0000
3M EUR EURIBOR	-0.331	0.0000
3M GBP LIBOR	0.33931	0.0000
3Y USD SWAP	1.6108	-0.0627
5Y USD SWAP	1.8127	-0.0614
10Y USD SWAP	2.128	-0.0810
30Y USD SWAP	2.4097	-0.0783

FIXED INCOME SPREADS

	Spread	ΔSpread (in Bps)
USD 3M vs 10Y Spread	1.36055	(0.0692)
USD 2Y vs 10Y Spread	1.00374	(0.0225)
USD IG Spread	1.55	-
USD HY Spread	3.69	0.1000
EU vs US 10Y Spread	-2.1543	-
EU vs US 2Y Spread	-2.093	-
EM vs Benchmark Spread	264.2	3.100

USD CORPORATES - 30 DAYS SPREAD

EU VS US - 30 DAYS SPREAD


GLOBAL COMMODITIES MARKET

	Last Price	Daily %
Commodity Index	85.35	-0.81%

Energy

WTI Crude Future	52.41	-0.46%
Brent Crude Future	54.89	-0.85%
NYMEX Gasoline	171.1	-0.50%
NYMEX Heat Oil	162.19	-0.67%
ICE Gasoil	491.25	-1.31%
NYMEX Natural Gas	3.145	-0.57%

Precious Metals

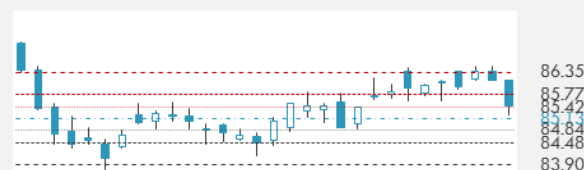
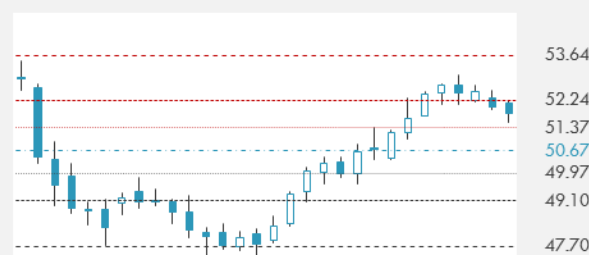
Gold Spot \$/Oz	1289.76	0.39%
Silver Spot \$/Oz	18.303	-0.62%
Platinum Spot \$/Oz	975.8	-0.84%
Palladium Spot \$/Oz	773.83	-2.07%
Gold Future	1294.1	0.17%
Silver Future	18.272	-1.31%
Platinum Future	978.6	-1.26%
Palladium Future	771	-2.23%

Base Metals

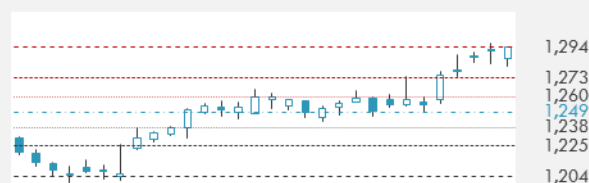
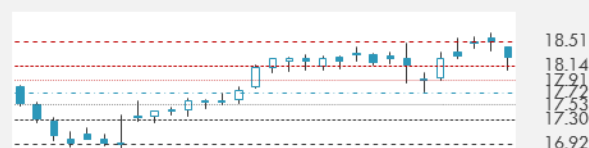
LME Aluminum	1892	-0.89%
LME Copper	5572	-2.11%
LME Zinc	2525	-3.81%
LME Nickel	9310	-4.51%
LME Lead	2101	-6.16%
LME Tin	19475	-0.66%

Agricultural

Corn CBT	368.25	-1.34%
Wheat CBT	437	0.29%
Soybeans CBT	956.25	-0.78%
Bean Meal CBT	316.6	-0.35%
Rough Rice CBT	10.05	-0.50%
MDE Palm Oil	2473	-1.00%
Soybean CBT	31.38	-2.03%
Coffee ICE	145.55	1.43%
Sugar #11 ICE	16.83	1.88%
Cotton #2 ICE	78.16	-0.01%
Cocoa ICE	1916	-0.57%
Ethanol CME	1.625	-1.93%
Lumber CME	385	-0.44%
Orange Juice ICE	154.65	0.88%
Live Cattle CME	115.65	0.06%
Feeder Cattle CME	142.175	-0.04%
Lean Hogs CME	71.5	-1.17%

COMMODITY INDEX SUPPORT & RESISTANCE

WTI OIL 30 DAYS SUPPORT & RESISTANCE


- Oil held losses near the lowest close in more than a week on signs that the pace of inventory declines in the U.S. is slowing.
- Gold holds near November high as investors weigh global political risks including the first round of the French presidential vote on Sunday.

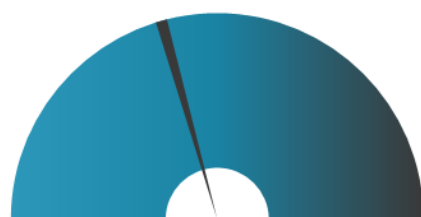
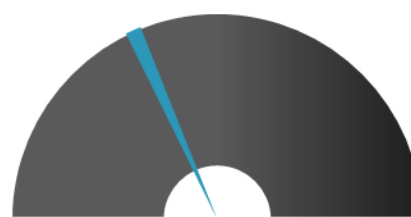
GOLD 30 DAYS SUPPORT & RESISTANCE

SILVER 30 DAYS SUPPORT & RESISTANCE


TOP 10 WINNERS

	Ticker	Last Price	Daily %
S&P 500 Stocks			
AUTONATION INC	AN	41.55	3.03
INTL PAPER CO	IP	51.45	1.94
IRON MOUNTAIN	IRM	36.54	1.81
CBS CORP-B	CBS	68.39	1.80
ARCHER-DANIELS	ADM	45.41	1.63
HCP INC	HCP	32.79	1.61
MICROCHIP TECH	MCHP	74.13	1.52
VENTAS INC	VTR	66.79	1.44
COTY INC-CL A	COTY	18.41	1.43
MONDELEZ INTER-A	MDLZ	44.74	1.36

TOP 10 LOSERS

	Ticker	Last Price	Daily %
S&P 500 Stocks			
NOBLE ENERGY INC	NBL	34.12	-3.51
APACHE CORP	APA	50.45	-3.90
HARLEY-DAVIDSON	HOG	56.91	-4.19
UNITED CONTINENT	UAL	67.75	-4.27
MCKESSON CORP	MCK	137.6	-4.59
REGIONS FINANCIA	RF	13.34	-4.65
AMERISOURCEBERGE	ABC	82.56	-4.71
GOLDMAN SACHS GP	GS	215.59	-4.72
WW GRAINGER INC	GWN	197.57	-11.39
CARDINAL HEALTH	CAH	72.39	-11.54

S&P 500 DISTRIBUTION

WINNERS
LOSERS
S&P VOLATILITY INDEX

LOW VOLATILITY
HIGH VOLATILITY

- A small hazardous material spill at Tesla's Gigafactory is being investigated by emergency workers after several employees were hospitalized per safety protocol.
- Ahead of meetings with finance ministers and central bankers in Washington this week, Treasury Secretary Steve Mnuchin is warning a summer tax reform is "not realistic at this point," attributing the delay to setbacks in healthcare.
- It has taken nearly a decade, but the British government is now poised to return Lloyds to the private sector at a profit
- Another high-level executive has jumped ship from UBER. This time it's Sherif Marakby, vice president of global vehicle programs, who helped launch the company's crucial (and embattled) self-driving car program.
- Toyota plans to introduce two Mirai fuel cell cars in China later this year on a test basis, according to execs at the Shanghai Auto Show.
- The global market for interconnected aircraft is set to exceed \$20B by 2020, and Honeywell is focusing on leading that trend, according to its Southeast Asia President.
- Volkswagen plans to launch an all-electric model in China next year, according to a top exec. The company is responding to a new proposed policy in China to force automakers to hit sales targets for electric vehicles and plug-in hybrid vehicles of 7% in 2020 and 15% in 2025.
- A group within the Trump administration, including Ivanka Trump and Jared Kushner, is recruiting energy companies to support the Paris climate agreement to cut greenhouse gas emissions, Bloomberg reports.

KEY ECONOMIC INDICATORS

Country	Event	Surv(M)	Actual	Prior	Time
Bahrain	M1 Money Supply YoY	--	--	-0.03%	
Bahrain	M2 Money Supply YoY	--	--	1.39%	
Bahrain	M3 Money Supply YoY	--	--	1.94%	
Bahrain	CPI YoY	--	--	0.40%	
Eurozone	CPI YoY	1.50%	--	1.50%	12:00
Eurozone	CPI MoM	0.80%	--	0.40%	12:00
Eurozone	CPI Core YoY	0.70%	--	0.70%	12:00
Eurozone	EU27 New Car Registrations	--	11.20%	2.20%	9:00
Eurozone	Trade Balance SA	18.0b	--	15.7b	12:00
Italy	Trade Balance Total	--	--	-574m	11:00
Oman	Nominal GDP YTD YoY	--	--	-11.10%	
Russia	PPI YoY	12.50%	--	15.10%	
Russia	PPI MoM	0.60%	--	0.80%	
United Arab Emirates	M1 Money Supply MoM	--	--	1.90%	
United Arab Emirates	M3 Money Supply MoM	--	--	1.90%	
United Arab Emirates	M2 Money Supply MoM	--	--	1.10%	
United Arab Emirates	CPI YoY	--	--	2.29%	
United Arab Emirates	CPI MoM	--	--	0.70%	
United States	DOE U.S. Crude Oil Inventories	-1400k	--	-2166k	17:30
United States	MBA Mortgage Applications	--	--	1.50%	14:00

Banque BEMO sal
Head Office - Private and Corporate Banking

96 Pasteur Building, Pasteur Street, Medawar Area, P.O. Box: 16-6353, Beirut - Lebanon
Tel: + 961 1 568 250 Fax: + 961 1 568 266

Investment & Research research@bemobank.com

Beirut Central District Riad El Solh Square, Esseily Building Bloc A, 7th Floor Beirut - Lebanon
Tel: + 961 1 992 600 Fax: + 961 1 983 368
www.bemobank.com

Disclaimer:

This report is published for information purposes only. The information herein has been compiled from, or based upon sources considered to be reliable (Bloomberg, SeekingAlpha, DailyStar...), but we do not guarantee or assume responsibility for its completeness and accuracy. This document should not be construed as a solicitation to take part in any investment, or as constituting any representation or warranty on our part. This report is not to be relied upon in substitution for the exercise of specialists.

We may not have taken any steps to ensure that the securities referred to in this report are suitable for any particular investor. The investments and services contained or referred to herein are not purported to be exhaustive, any person considering an investment should seek specialist advice on the suitability of an investment.

Nothing in this report constitutes investment, legal, accounting or tax advice, or a representation that any investment or strategy is suitable or appropriate to your individual circumstances, or otherwise constitutes a personal recommendation. Clients understand that it is their responsibility to seek legal and/or tax advice regarding the legal and tax consequences of their investment transactions. The consequences of any action taken on the basis of information contained herein are solely the responsibility of the recipient.

Investment instruments are subject to risk, including possible loss of principal amount invested. Past performance should not be taken as an indication or guarantee of future performance, and no representation or warranty, express or implied, is made regarding future performance. The value of securities and financial instruments is subject to exchange rate fluctuation that may have a positive or adverse effect on the price or income of such securities or financial instruments. Some investments mentioned in this report may have a high level of volatility. High volatility investments may experience sudden and large falls in their value causing losses when that investment is realized. Some investments may not be readily realizable and it may be difficult to sell or realize those investments, similarly it may prove difficult to obtain reliable information about the value, or risks, to which such an investment is exposed.

This report may provide the addresses of websites or references. We have not reviewed any such site and takes no responsibility for the content contained therein. Such address or reference is provided solely for convenience and information. Accessing such website through this report shall be at the recipients own risk.