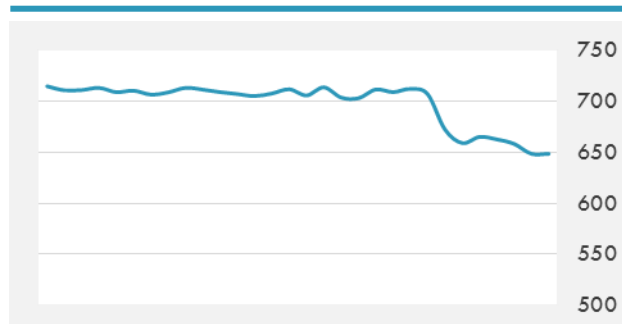
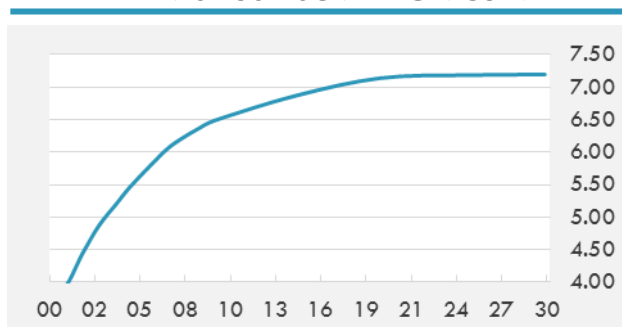


BEIRUT STOCK EXCHANGE

	Last	Daily %	YTD %	Dividend %
Development and Reconstruction				
Solidere A	8.4	0.00%	-19.08%	1.18%
Solidere B	8.35	-1.65%	-20.48%	1.18%
Solidere GDR	8.5	2.41%	-15.00%	1.16%
Banking				
Audi Listed	6.4	0.00%	-5.88%	8.04%
BLC Listed	0.99	0.00%	0.00%	0.00%
BOB Listed	18.8	0.00%	0.00%	3.17%
Byblos Listed	1.75	0.00%	2.94%	7.56%
BEMO Listed	1.7	0.00%	0.00%	2.33%
BLOM Listed	10.63	-2.92%	0.28%	9.32%
Trading				
RYMCO	3.25	0.00%	0.00%	3.69%
Industrial				
Holcim	11.58	0.00%	-1.45%	7.32%
Ciments Blancs	1.57	0.00%	0.00%	0.00%

MSCI LEBANON INDEX - 30 DAYS CHART

LEBANESE USD SOVEREIGN CURVE


- The Byblos Bank/AUB Consumer Confidence Index increased by 16 percent in the first quarter of 2017 compared to the fourth quarter of 2016, a statement issued by Byblos Bank said Thursday. "The index averaged 58.5 in the first quarter of the year, constituting an increase of 16 percent from 50.4 in the fourth quarter of 2016," it said
- The UAE has been ranked 21st globally for foreign direct investments (FDI), a report said, highlighting that FDI inflows reached reaching \$11 billion in 2014 and 2015, while greenfield investments nearly tripled to 129 projects.

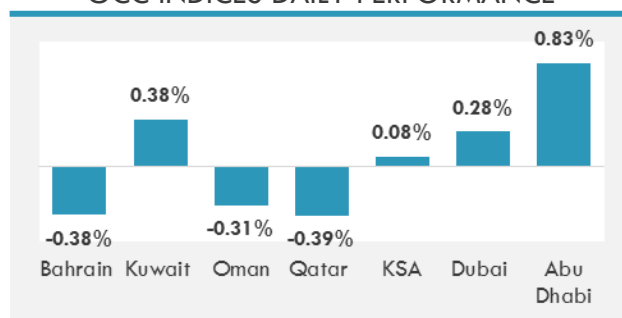
GCC EQUITY INDICES

	Last Price	Daily %	YTD %
Bahrain	1334.42	-0.38%	9.34%
Kuwait	6813.53	0.38%	18.54%
Oman	5511.1	-0.31%	-5.33%
Qatar	10295.96	-0.39%	-1.87%
KSA	6948.06	0.08%	-4.32%
Dubai	3505.7	0.28%	-1.73%
Abu Dhabi	4531.63	0.83%	-0.54%

MSCI GCC INDEX - 30 DAYS CHART

LOCAL/GCC FOREIGN EXCHANGE

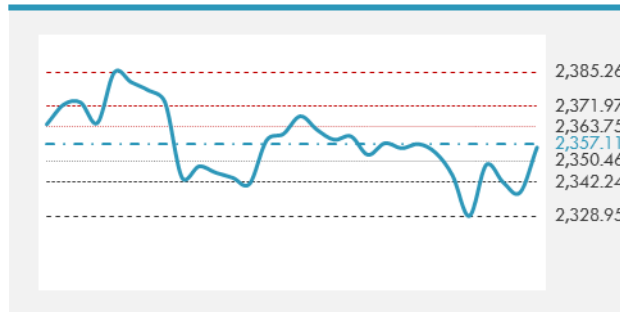
	Cross	Last Price
Lebanese Pound Spot	USD/LBP	1514.13
Bahraini Dinar Spot	USD/BHD	0.37701
Kuwaiti Dinar Spot	USD/KWD	0.30461
Omani Rial Spot	USD/OMR	0.385
Qatari Riyal Spot	USD/QAR	3.6415
Saudi Riyal Spot	USD/SAR	3.7504
UAE Dirham Spot	USD/AED	3.673

GCC INDICES DAILY PERFORMANCE


UNITED STATES EQUITY MARKET INDICES

	Last Price	Daily %	YTD %	Δ10D Vol
Major Indices				
Dow Jones	20578.71	0.85%	4.13%	1.63%
S&P 500	2355.84	0.76%	5.23%	1.23%
Nasdaq	5916.777	0.92%	9.91%	1.51%
Sectors Indices				
Discretionary	703.77	1.00%	8.64%	1.46%
Staples	566.03	-0.25%	6.44%	0.21%
Energy	500.67	0.39%	-9.71%	-0.89%
Financials	388.2	1.55%	0.43%	2.57%
Healthcare	855.83	0.55%	7.39%	0.78%
Industrials	561.73	1.08%	4.40%	1.51%
IT	904.7	0.98%	11.98%	2.03%
Materials	327.48	1.06%	4.91%	1.48%
Telecom	165.34	-0.26%	-6.38%	-4.56%
Utilities	261.12	-0.39%	5.79%	0.25%
Real Estate	200.4	-0.02%	5.35%	0.03%

S&P 500 INDEX - 30 DAYS CHART

S&P 500 SUPPORT & RESISTANCE


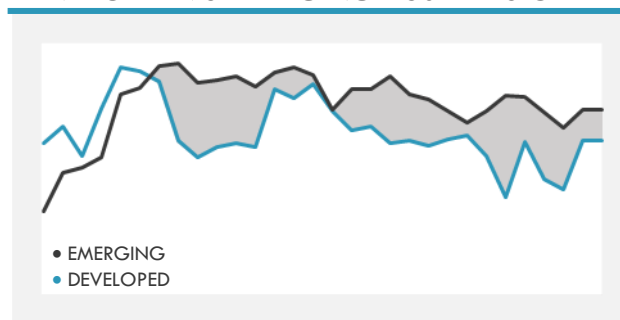
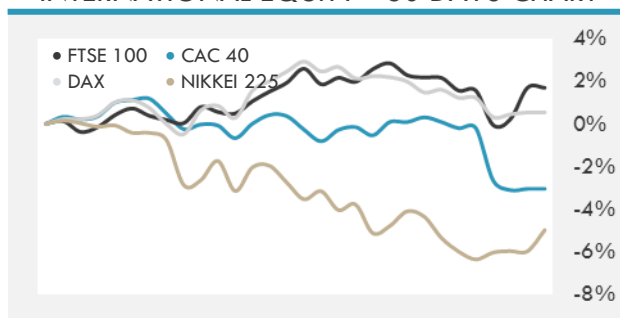
- U.S. stocks rose for the first time in three days as industrial companies advanced and energy shares climbed. Oil prices fluctuated.
- European stocks rose, seeing their biggest two-day jump in three weeks, as polls showed support may be firming up for French presidential candidate Emmanuel Macron ahead of Sunday's first-round vote.
- Equities climbed across Asia as optimism spread for a U.S. tax overhaul and the yen weakened after Bank of Japan Governor Kurodasaid said he will keep accommodative policy in place.

INTERNATIONAL MARKETS INDICES

	Last Price	Daily %	YTD %	Δ10D Vol
World	1093.45	0.63%	6.05%	1.17%
Developed	1846.65	0.63%	5.45%	1.07%
Emerging	958.45	0.58%	11.15%	1.01%
Frontier	2602.94	0.32%	7.63%	0.25%
Europe	127.62	0.20%	4.18%	0.08%
Latin America	2609.31	0.22%	11.48%	-0.12%
Asia Pacific	146.01	0.34%	8.12%	0.34%

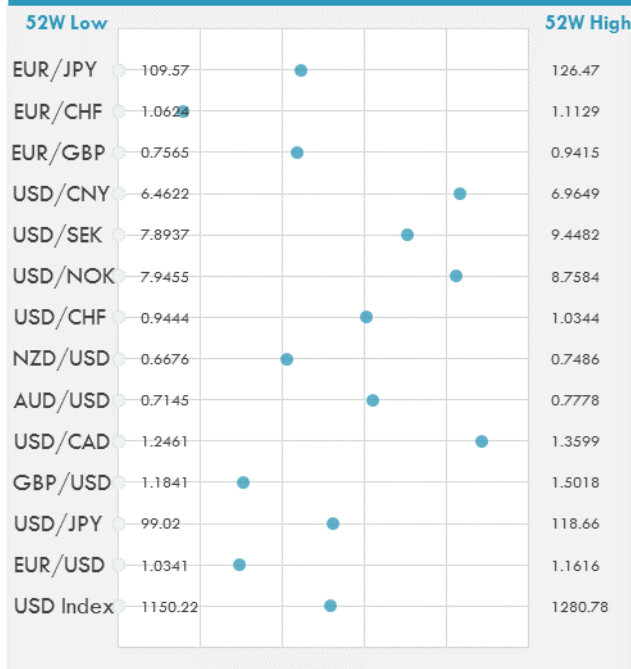
INTERNATIONAL EQUITY INDICES

	Last Price	Daily %	YTD %	Δ10D Vol
EuroStoxx 50	3440.03	0.56%	4.54%	0.93%
FTSE 100	7118.54	0.06%	-0.34%	-0.07%
CAC 40	5077.91	1.48%	4.43%	3.40%
DAX	12027.32	0.09%	4.76%	-0.04%
Swiss SMI	8557.87	0.30%	4.11%	0.40%
Nikkei 225	18624.7	1.05%	-2.56%	-0.40%
CSI 300	3455.37	-0.19%	4.39%	0.89%

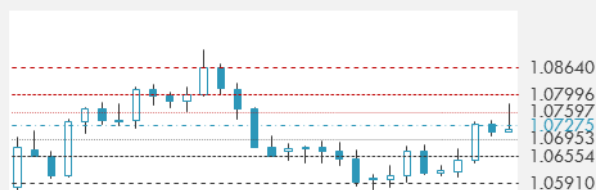
DEVELOPED VS EMERGING - 30 DAYS CHART

INTERNATIONAL EQUITY - 30 DAYS CHART


FOREIGN EXCHANGE MARKET

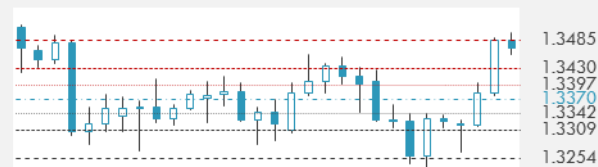
	Last Price	Daily %	Δ10D	Vol 25	ΔRR
Major Indices					
USD Index	1217.68	-0.03%	0.03%	-	
EUR/USD	1.0717	0.00%	0.02%	-3.978	
USD/JPY	109.27	-0.05%	0.02%	-3.095	
GBP/USD	1.2808	-0.04%	0.22%	0.013	
USD/CAD	1.3467	-0.01%	-0.89%	0.390	
AUD/USD	0.7537	0.13%	0.02%	-1.070	
NZD/USD	0.7007	-0.06%	-0.07%	-1.043	
USD/CHF	0.9988	0.01%	0.02%	-0.198	
USD/NOK	8.6138	-0.13%	-0.23%	2.780	
USD/SEK	8.9885	0.02%	-0.01%	0.005	
USD/CNY	6.8805	-0.02%	-0.07%	-1.645	
Major EUR Cross Rate					
EUR/GBP	0.83672	0.04%	0.16%	-2.718	
EUR/CHF	1.07034	0.00%	0.00%	-2.580	
EUR/JPY	117.1	-0.05%	0.00%	-5.113	

DISTANCE FROM 52 WEEKS LOW/HIGH


- The euro headed for its biggest weekly gain in three months as the currency was bolstered by a rally in the pound and a weaker dollar before Sunday's French presidential election.
- Marine Le Pen may be about to undo the Donald Trump effect, at least when it comes to the yen. The currency is advancing toward 105 per dollar, a level last seen just after U.S. voters unexpectedly elected Trump in November.
- The pound rose against the dollar on Thursday, supported by the view that early elections in the U.K. diminish prospects of a messy exit from the European Union.

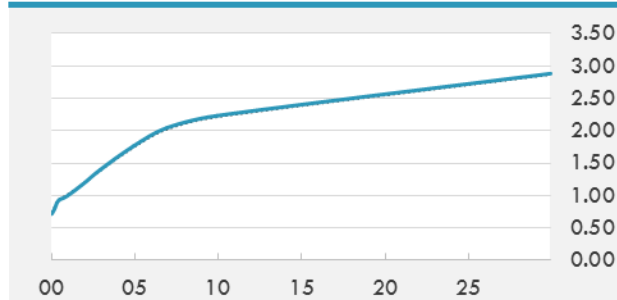
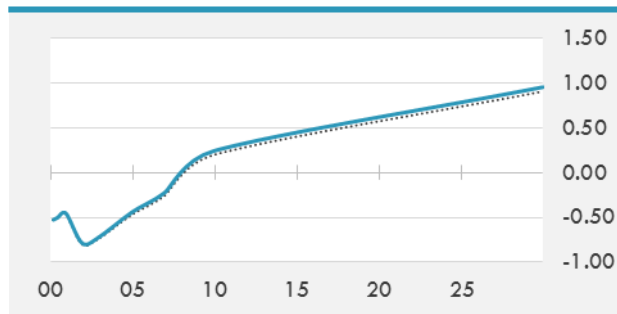
EUR/USD 30 DAYS SUPPORT & RESISTANCE

GBP/USD 30 DAYS SUPPORT & RESISTANCE

USD/JPY 30 DAYS SUPPORT & RESISTANCE

USD/CAD 30 DAYS SUPPORT & RESISTANCE


GLOBAL BOND INDICES

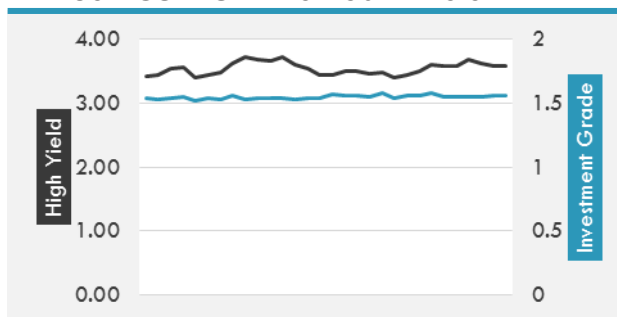
	Yield	ΔYield (in Bps)
Benchmark Indices		
US 10 Years Benchmark	2.232	0.018
EU 10 Years Benchmark	0.244	0.041
UK 10 Years Benchmark	1.069	0.004
Sovereign Bonds		
US Treasury Bond	1.794	0.032
Eurozone Sovereign Bond	0.676	0.012
U.K. Sovereign Bond	1.024	-0.002
Japan Sovereign Bond	0.063	0.002
USD Emerging Sovereign Bond	4.59	0.015
Corporate Bonds		
US Investment Grade Bond	3.231	0.037
US High Yield Bond	5.854	-0.011
EUR Investment Grade Bond	0.707	0.025
EUR High Yield Bond	2.885	0.021
USD Emerging Market IG & HY	4.737	0.002

US TREASURIES YIELD CURVE

EUR GENERIC YIELD CURVE


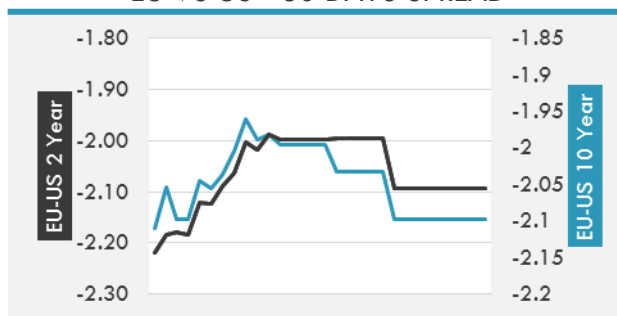
- Treasuries fell Thursday amid steeper declines for most European government bond markets ahead of the French election on Sunday and gains for U.S. stocks and the dollar after U.S. Treasury Secretary Steven Mnuchin said a major tax reform plan will emerge soon.
- OATs (French Government Bond) outperform as risk sentiment improves with German curve steepening. French/German 2Y spread tightens 3bps to 47bps following recent political risks spilling into the front-end.

OVERNIGHT RATES - SWAPS

	Yield	ΔYield (in Bps)
3M USD LIBOR	1.15567	0.0000
3M EUR EURIBOR	-0.332	0.0000
3M GBP LIBOR	0.33681	0.0000
3Y USD SWAP	1.6727	0.0362
5Y USD SWAP	1.889	0.0384
10Y USD SWAP	2.2033	0.0373
30Y USD SWAP	2.4584	0.0218

USD CORPORATES - 30 DAYS SPREAD

FIXED INCOME SPREADS

	Spread	ΔSpread (in Bps)
USD 3M vs 10Y Spread	1.43965	0.0297
USD 2Y vs 10Y Spread	1.04333	0.0115
USD IG Spread	1.56	0.0100
USD HY Spread	3.59	(0.0400)
EU vs US 10Y Spread	-2.1543	-
EU vs US 2Y Spread	-2.093	-
EM vs Benchmark Spread	261.7	(1.700)

EU VS US - 30 DAYS SPREAD


GLOBAL COMMODITIES MARKET

	Last Price	Daily %
Commodity Index	84.45	-0.22%

Energy

WTI Crude Future	50.71	-0.28%
Brent Crude Future	52.99	0.11%
NYMEX Gasoline	167.05	0.69%
NYMEX Heat Oil	157.89	-0.15%
ICE Gasoil	476.75	-2.26%
NYMEX Natural Gas	3.159	-0.82%

Precious Metals

Gold Spot \$/Oz	1281.9	0.13%
Silver Spot \$/Oz	18.0331	-0.62%
Platinum Spot \$/Oz	979.17	1.21%
Palladium Spot \$/Oz	803.84	3.33%
Gold Future	1283.8	0.03%
Silver Future	18.018	-0.79%
Platinum Future	981.2	1.12%
Palladium Future	802.9	3.52%

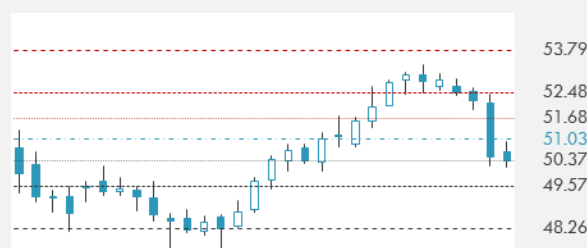
Base Metals

LME Aluminum	1943	2.10%
LME Copper	5623	1.21%
LME Zinc	2632	3.30%
LME Nickel	9480	1.50%
LME Lead	2160	-0.07%
LME Tin	19875	0.38%

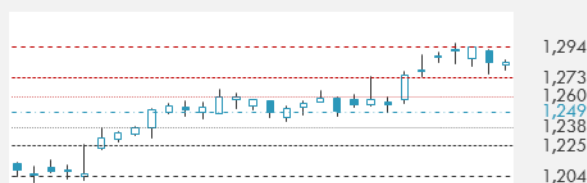
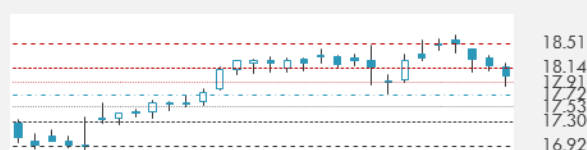
Agricultural

Corn CBT	364.25	-1.09%
Wheat CBT	421.75	-2.93%
Soybeans CBT	956.75	-0.39%
Bean Meal CBT	311.9	-1.05%
Rough Rice CBT	9.85	-1.99%
MDE Palm Oil	2504	1.58%
Soybean CBT	32.12	1.04%
Coffee ICE	134.3	-4.51%
Sugar #11 ICE	16.41	-0.67%
Cotton #2 ICE	79.11	1.01%
Cocoa ICE	1799	-3.95%
Ethanol CME	1.6	0.00%
Lumber CME	388.8	0.36%
Orange Juice ICE	152.15	-2.84%
Live Cattle CME	116.475	0.45%
Feeder Cattle CME	142.45	-0.35%
Lean Hogs CME	68.675	-1.82%

COMMODITY INDEX SUPPORT & RESISTANCE

WTI OIL 30 DAYS SUPPORT & RESISTANCE


- Oil is heading for its biggest weekly loss since early March despite signs OPEC will likely prolong its output cuts.
- Gold trades in narrow range before the first round of the French presidential elections on Sunday.

GOLD 30 DAYS SUPPORT & RESISTANCE

SILVER 30 DAYS SUPPORT & RESISTANCE


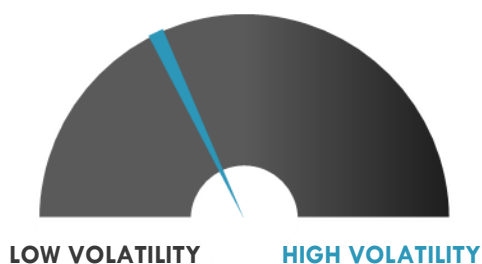
TOP 10 WINNERS

	Ticker	Last Price	Daily %
S&P 500 Stocks			
ALLIANCE DATA	ADS	260.62	8.30
QUEST DIAGNOSTIC	DGX	104.03	6.03
NAVIENT CORP	NAVI	16.01	5.96
AMERICAN EXPRESS	AXP	80.02	5.92
SNAP-ON INC	SNA	173.13	5.72
CSX CORP	CSX	49.56	5.60
FOOT LOCKER INC	FL	76.55	5.37
GAP INC/THE	GPS	25.42	4.95
KEYCORP	KEY	18.21	4.84
NUCOR CORP	NUE	60.35	4.74

TOP 10 LOSERS

	Ticker	Last Price	Daily %
S&P 500 Stocks			
NIelsen HOLDINGS	NLSN	41.13	-1.51
H&R BLOCK INC	HRB	23.64	-2.39
DR HORTON INC	DHI	33.1	-2.50
PHILIP MORRIS IN	PM	109.98	-3.45
PULTEGROUP INC	PHM	23.34	-3.51
NRG ENERGY	NRG	17.24	-3.58
ENVISION HEALTHC	EVHC	55.36	-3.65
EBAY INC	EBAY	32.53	-3.91
DANAHER CORP	DHR	82.89	-4.11
UNITED RENTALS	URI	113.24	-5.20

S&P 500 DISTRIBUTION

S&P VOLATILITY INDEX


- General Motors is ceasing its Venezuelan operations after its assets in the country were seized by public authorities.
- "Amazon Web Services launched an Australian region in 2012, we launched a Kindle store on amazon.com.au in 2013 and we now have almost 1000 employees in the country," Amazon said in a statement.
- Facebook's new Building 8 "moon shot" unit is working on ways to read your thoughts, hiring 60 research scientists in the last year to establish the venture.
- Tesla issued a voluntary recall for around 53K vehicles built early last year for a brake issue, according to a CNBC report. The recall action covers both Model S cars and Model X SUVs. 31K of the recalled cars are located in the U.S.
- Today is launch day in the U.S. for Samsung's Galaxy S8 smartphone, and stakes are high after the (somewhat literal) meltdown of the company's launch of Note 7 devices last year.
- A group of 11 Republican attorneys general join forces in court to help stop an investigation into whether Exxon Mobil misled investors about the effects of fossil fuels on the global climate.
- A high-tech Tesla semi truck could amass billions of dollars in revenues just by capturing a small fraction of the U.S. trucking market. One hypothetical scenario is that TSLA could become a truck manufacturer; if it could sell 25K trucks/year, it is estimated that TSLA could add \$2.5B in annual revenue just by capturing 10% of the total U.S. new truck market - worth about as much as selling 70K Model 3 cars at base prices.

KEY ECONOMIC INDICATORS

Country	Event	Surv(M)	Actual	Prior	Time
Bahrain	M1 Money Supply YoY	--	--	-0.03%	
Canada	CPI YoY	1.80%	--	2.00%	15:30
Canada	CPI NSA MoM	0.40%	--	0.20%	15:30
Eurozone	Markit Eurozone Manufacturing PMI	56	--	56.2	11:00
Eurozone	Markit Eurozone Composite PMI	56.4	--	56.4	11:00
France	Markit France Manufacturing PMI	53.1	--	53.3	10:00
France	Markit France Services PMI	57	--	57.5	10:00
France	Markit France Composite PMI	56.2	--	56.8	10:00
Germany	Germany Manufacturing PMI	58	--	58.3	10:30
Germany	Markit Germany Services PMI	55.5	--	55.6	10:30
Japan	Tertiary Industry Index MoM	0.30%	0.20%	0.00%	7:30
Japan	Nikkei Japan PMI Mfg	--	52.8	52.4	3:30
United Arab Emirates	M1 Money Supply MoM	--	--	1.90%	
United Arab Emirates	M3 Money Supply MoM	--	--	1.90%	
United Kingdom	Retail Sales Ex Auto Fuel MoM	-0.50%	--	1.30%	11:30
United Kingdom	Retail Sales Inc Auto Fuel MoM	-0.50%	--	1.40%	11:30
United Kingdom	Retail Sales Inc Auto Fuel YoY	3.30%	--	3.70%	11:30
United Kingdom	Retail Sales Ex Auto Fuel YoY	3.80%	--	4.10%	11:30
United States	Markit US Manufacturing PMI	53.8	--	53.3	16:45
United States	Existing Home Sales	5.60m	--	5.48m	17:00

Banque BEMO sal
Head Office - Private and Corporate Banking

96 Pasteur Building, Pasteur Street, Medawar Area, P.O. Box: 16-6353, Beirut - Lebanon
 Tel: + 961 1 568 250 Fax: + 961 1 568 266

Investment & Research research@bemobank.com

Beirut Central District Riad El Solh Square, Esseily Building Bloc A, 7th Floor Beirut - Lebanon
 Tel: + 961 1 992 600 Fax: + 961 1 983 368
www.bemobank.com

Disclaimer:

This report is published for information purposes only. The information herein has been compiled from, or based upon sources considered to be reliable (Bloomberg, SeekingAlpha, DailyStar...), but we do not guarantee or assume responsibility for its completeness and accuracy. This document should not be construed as a solicitation to take part in any investment, or as constituting any representation or warranty on our part. This report is not to be relied upon in substitution for the exercise of specialists.

We may not have taken any steps to ensure that the securities referred to in this report are suitable for any particular investor. The investments and services contained or referred to herein are not purported to be exhaustive, any person considering an investment should seek specialist advice on the suitability of an investment.

Nothing in this report constitutes investment, legal, accounting or tax advice, or a representation that any investment or strategy is suitable or appropriate to your individual circumstances, or otherwise constitutes a personal recommendation. Clients understand that it is their responsibility to seek legal and/or tax advice regarding the legal and tax consequences of their investment transactions. The consequences of any action taken on the basis of information contained herein are solely the responsibility of the recipient.

Investment instruments are subject to risk, including possible loss of principal amount invested. Past performance should not be taken as an indication or guarantee of future performance, and no representation or warranty, express or implied, is made regarding future performance. The value of securities and financial instruments is subject to exchange rate fluctuation that may have a positive or adverse effect on the price or income of such securities or financial instruments. Some investments mentioned in this report may have a high level of volatility. High volatility investments may experience sudden and large falls in their value causing losses when that investment is realized. Some investments may not be readily realizable and it may be difficult to sell or realize those investments, similarly it may prove difficult to obtain reliable information about the value, or risks, to which such an investment is exposed.

This report may provide the addresses of websites or references. We have not reviewed any such site and takes no responsibility for the content contained therein. Such address or reference is provided solely for convenience and information. Accessing such website through this report shall be at the recipients own risk.