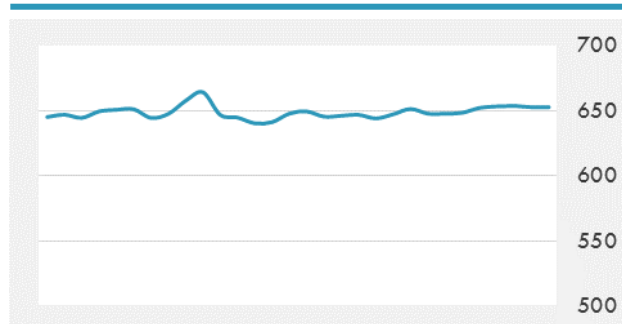
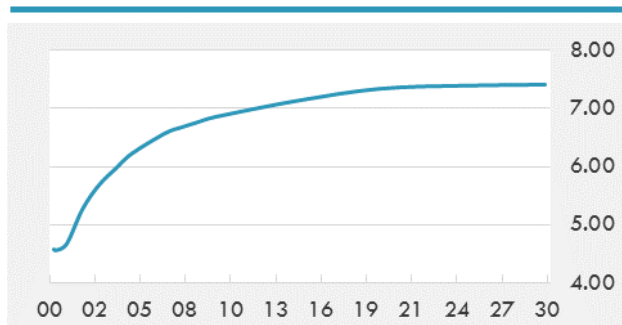


**BEIRUT STOCK EXCHANGE**

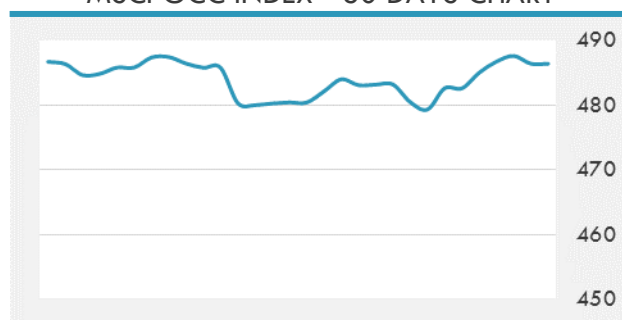
	Last	Daily %	YTD %	Dividend %
<b>Development and Reconstruction</b>				
Solidere A	8.08	-0.49%	-22.16%	1.22%
Solidere B	7.87	-0.25%	-25.05%	1.23%
Solidere GDR	7.6	0.00%	-24.00%	1.30%
<b>Banking</b>				
Audi Listed	6	0.00%	-11.76%	8.38%
BLC Listed	0.93	0.00%	-6.06%	0.00%
BOB Listed	18.8	0.00%	0.00%	3.52%
Byblos Listed	1.64	1.86%	-3.53%	8.07%
BEMO Listed	1.64	0.00%	-3.53%	3.27%
BLOM Listed	11.4	0.00%	7.55%	8.69%
<b>Trading</b>				
RYMCO	3.25	0.00%	0.00%	0.00%
<b>Industrial</b>				
Holcim	12.26	0.00%	4.34%	19.41%
Ciments Blancs	1.82	0.00%	15.92%	0.00%

**MSCI LEBANON INDEX - 30 DAYS CHART**

**LEBANESE USD SOVEREIGN CURVE**


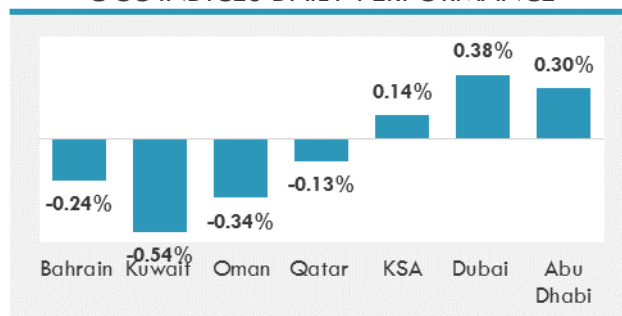
- Saudi Arabia and China plan to establish and operate jointly a \$20 billion Investment fund, sharing costs and profits on a 50:50 basis, Saudi Energy Minister Khalid al-Falih told Reuters on Thursday.
- The blueprint for Dubai Food Park (DFP), the latest addition to Dubai Wholesale City (DWSC), has been unveiled by His Highness Sheikh Mohammed bin Rashid Al Maktoum, Vice President and Prime Minister of the UAE and Ruler of Dubai. To be developed at a cost of \$1.5 billion, DFP is the first such project in the Middle East dedicated to serving the food sector.

**GCC EQUITY INDICES**

	Last Price	Daily %	YTD %
Bahrain	1302.13	-0.24%	6.69%
Kuwait	6885.17	-0.54%	19.78%
Oman	4955.27	-0.34%	-14.45%
Qatar	9053.6	-0.13%	-14.23%
KSA	7263.75	0.14%	0.49%
Dubai	3624.85	0.38%	2.65%
Abu Dhabi	4487.41	0.30%	-1.16%

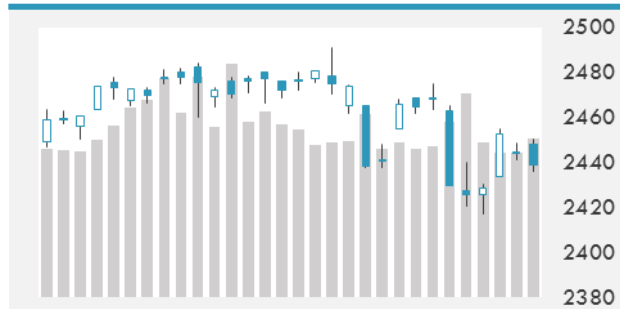
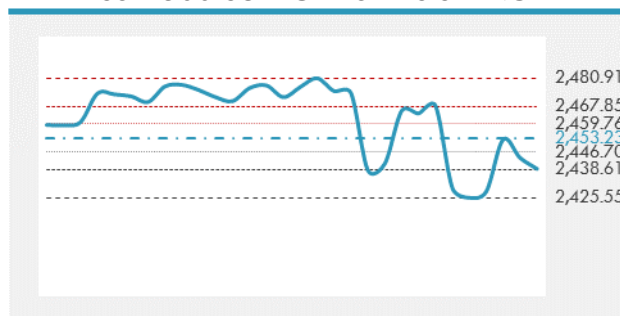
**MSCI GCC INDEX - 30 DAYS CHART**

**LOCAL/GCC FOREIGN EXCHANGE**

	Cross	Last Price
Lebanese Pound Spot	USD/LBP	1506.5
Bahraini Dinar Spot	USD/BHD	0.37705
Kuwaiti Dinar Spot	USD/KWD	0.30192
Omani Rial Spot	USD/OMR	0.385
Qatari Riyal Spot	USD/QAR	3.67
Saudi Riyal Spot	USD/SAR	3.7502
UAE Dirham Spot	USD/AED	3.673

**GCC INDICES DAILY PERFORMANCE**


**UNITED STATES EQUITY MARKET INDICES**

	Last Price	Daily %	YTD %	Δ10D Vol
<b>Major Indices</b>				
Dow Jones	21783.4	-0.13%	10.23%	0.01%
S&P 500	2438.97	-0.21%	8.94%	0.05%
Nasdaq	6271.326	-0.11%	16.50%	-0.30%
<b>Sectors Indices</b>				
Discretionary	702.58	-0.25%	8.45%	-0.50%
Staples	559.93	-1.34%	5.29%	2.96%
Energy	459.39	-0.02%	-17.15%	-0.14%
Financials	409.65	-0.08%	5.98%	-0.29%
Healthcare	911.46	0.28%	14.37%	-0.01%
Industrials	571.73	-0.39%	6.26%	0.04%
IT	990.85	-0.12%	22.64%	-0.23%
Materials	339.59	-0.14%	8.79%	-0.06%
Telecom	157.82	-0.37%	-10.64%	0.10%
Utilities	277.37	-0.08%	12.37%	-1.33%
Real Estate	201.17	-0.15%	5.75%	-0.61%

**S&P 500 INDEX - 30 DAYS CHART**

**S&P 500 SUPPORT & RESISTANCE**


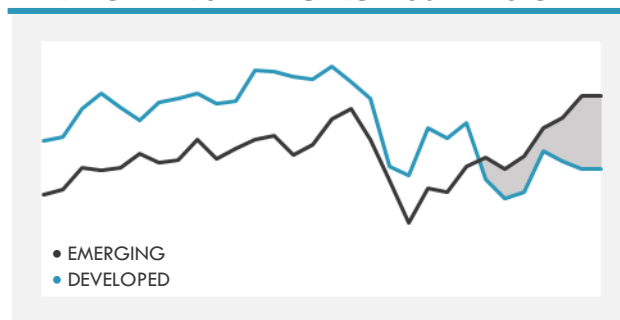
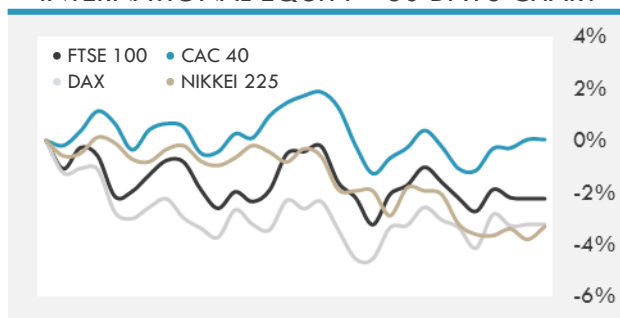
- U.S. equities extended losses Thursday as all but one industry group in the S&P 500 fell and consumer staples stocks posted the worst single-day decline this year.
- European stocks edge higher for the second time this week as investors await a meeting of central bankers in Jackson Hole, Wyoming, that can provide monetary-policy clues.
- Asian equities rose as Chinese financials gained ahead of earnings next week and Japanese automaker shares advanced after the yen slipped against the dollar.

**INTERNATIONAL MARKETS INDICES**

	Last Price	Daily %	YTD %	Δ10D Vol
World	1158.23	-0.04%	12.34%	-0.18%
Developed	1939.65	-0.13%	10.76%	-0.01%
Emerging	1082.45	0.64%	25.53%	-4.19%
Frontier	2805.01	0.36%	15.99%	0.03%
Europe	126.42	0.17%	3.20%	-1.49%
Latin America	2889.73	1.05%	23.46%	0.15%
Asia Pacific	159.98	-0.05%	18.47%	-2.45%

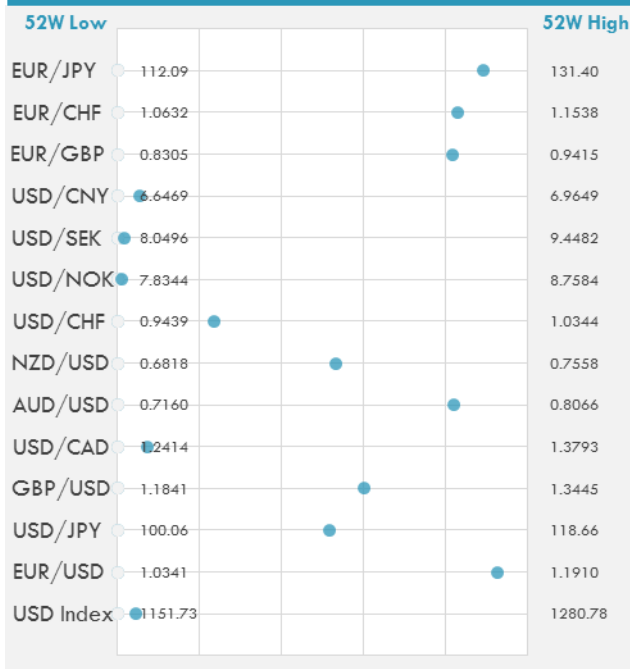
**INTERNATIONAL EQUITY INDICES**

	Last Price	Daily %	YTD %	Δ10D Vol
EuroStoxx 50	3444.73	0.18%	4.69%	-0.98%
FTSE 100	7407.06	0.33%	3.70%	-1.98%
CAC 40	5113.13	-0.04%	5.16%	-1.71%
DAX	12180.83	0.05%	6.09%	-0.02%
Swiss SMI	8943.04	-0.17%	8.80%	-0.68%
Nikkei 225	19452.61	0.51%	1.77%	0.04%
CSI 300	3795.12	1.62%	14.65%	-5.42%

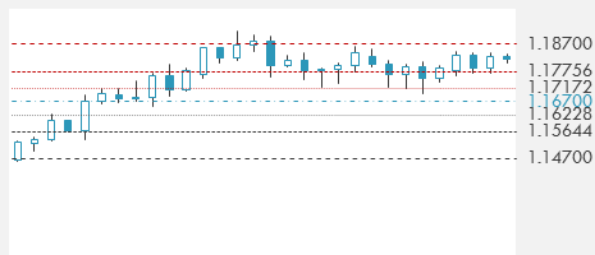
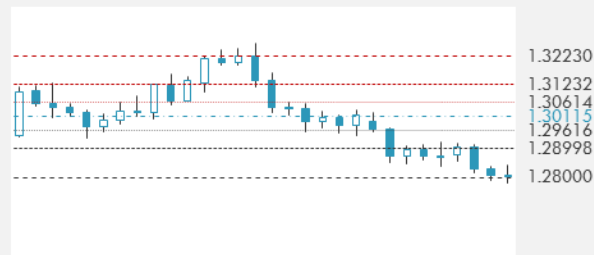
**DEVELOPED VS EMERGING - 30 DAYS CHART**

**INTERNATIONAL EQUITY - 30 DAYS CHART**


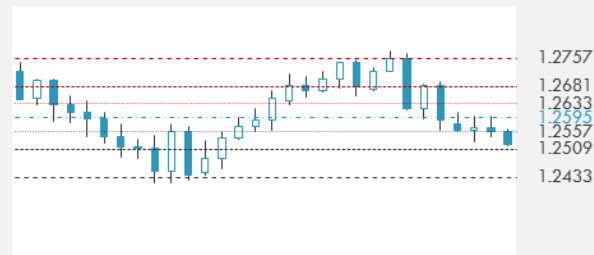
**FOREIGN EXCHANGE MARKET**

	Last Price	Daily %	Δ10D	Vol 25	ΔRR
<b>Major USD Cross Rate</b>					
USD Index	1157.52	0.01%	-0.39%	-	
EUR/USD	1.1793	-0.05%	-0.32%	0.105	
USD/JPY	109.62	0.05%	-0.27%	-0.700	
GBP/USD	1.2804	0.02%	-0.05%	-0.298	
USD/CAD	1.2513	-0.06%	-0.50%	0.268	
AUD/USD	0.7902	-0.04%	-0.57%	-0.490	
NZD/USD	0.7209	-0.07%	-0.06%	-0.535	
USD/CHF	0.9652	-0.03%	-2.55%	-0.300	
USD/NOK	7.8408	-0.03%	-0.32%	0.155	
USD/SEK	8.0717	0.06%	0.04%	-0.128	
USD/CNY	6.6640	0.03%	-0.10%	0.425	
<b>Major EUR Cross Rate</b>					
EUR/GBP	0.92107	-0.08%	0.15%	0.180	
EUR/CHF	1.13827	-0.07%	-1.30%	-0.273	
EUR/JPY	129.27	0.00%	0.00%	-0.693	

**DISTANCE FROM 52 WEEKS LOW/HIGH**


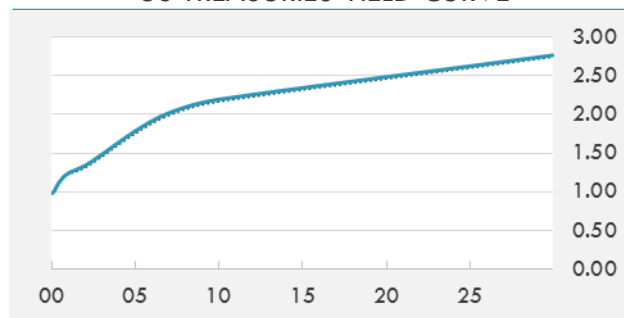
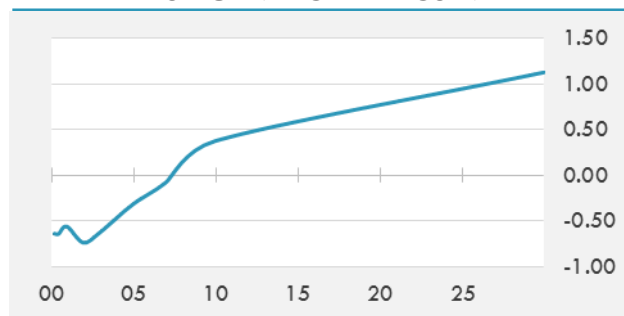
- The yen is headed for its worst week in almost two months against the dollar as traders await clues for the pace of monetary tightening from central bankers at Jackson Hole and tensions eased on the Korean peninsula.
- Dollar bulls are defying the currency's longest monthly-losing streak in six years by adding to wagers it will strengthen.
- The pound snapped a four-day drop against the euro after some investors judged the selling of U.K.'s currency was overdone.

**EUR/USD 30 DAYS SUPPORT & RESISTANCE**

**GBP/USD 30 DAYS SUPPORT & RESISTANCE**

**USD/JPY 30 DAYS SUPPORT & RESISTANCE**

**USD/CAD 30 DAYS SUPPORT & RESISTANCE**


**GLOBAL BOND INDICES**

	Yield	ΔYield (in Bps)
<b>Benchmark Indices</b>		
US 10 Years Benchmark	2.1939	0.028
EU 10 Years Benchmark	0.376	-0.001
UK 10 Years Benchmark	1.053	-0.006
<b>Sovereign Bonds</b>		
US Treasury Bond	1.806	0.02
Eurozone Sovereign Bond	0.609	0.003
U.K. Sovereign Bond	1.063	-0.01
Japan Sovereign Bond	0.1	-0.008
USD Emerging Sovereign Bond	4.481	-0.007
<b>Corporate Bonds</b>		
US Investment Grade Bond	3.127	0.019
US High Yield Bond	5.794	-0.025
EUR Investment Grade Bond	0.607	0
EUR High Yield Bond	1.887	-0.003
USD Emerging Market IG & HY	4.591	-0.014

**US TREASURIES YIELD CURVE**

**EUR GENERIC YIELD CURVE**


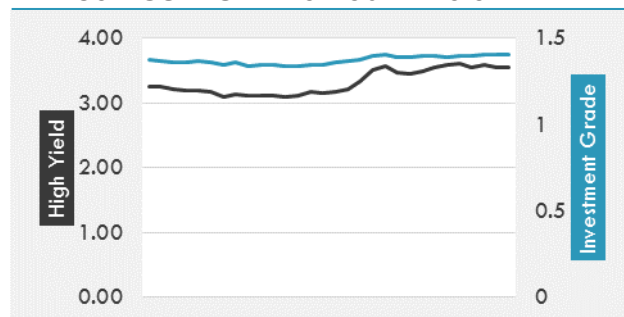
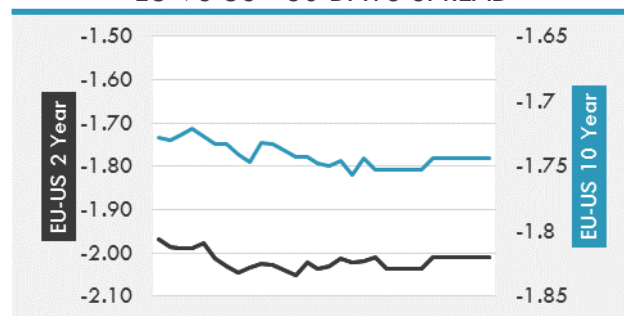
- Rising US treasury yields ahead of the Jackson Hole policy symposium helped the dollar rebound in an otherwise listless market as President Trump addresses tax reform and the debt ceiling via twitter.
- Bund futures called to open little changed. Treasuries edge higher in Asian hours after closing on day's low Thursday. Market remains on hold ahead of Jackson Hole with futures volumes very low, running ~56% of recent averages.

**OVERNIGHT RATES - SWAPS**

	Yield	ΔYield (in Bps)
3M USD LIBOR	1.31722	0.0000
3M EUR EURIBOR	-0.329	0.0000
3M GBP LIBOR	0.27994	0.0000
3Y USD SWAP	1.6682	0.0242
5Y USD SWAP	1.8248	0.0250
10Y USD SWAP	2.1347	0.0302
30Y USD SWAP	2.4188	0.0207

**FIXED INCOME SPREADS**

	Spread	ΔSpread (in Bps)
USD 3M vs 10Y Spread	1.17359	0.0101
USD 2Y vs 10Y Spread	0.86011	0.0034
USD IG Spread	1.41	-
USD HY Spread	3.55	(0.0500)
EU vs US 10Y Spread	-1.7795	-
EU vs US 2Y Spread	-2.0088	-
EM vs Benchmark Spread	242.3	(2.900)

**USD CORPORATES - 30 DAYS SPREAD**

**EU VS US - 30 DAYS SPREAD**


**GLOBAL COMMODITIES MARKET**

	Last Price	Daily %
Commodity Index	83.51	0.29%

**Energy**

WTI Crude Future	47.43	-2.02%
Brent Crude Future	52.04	-1.01%
NYMEX Gasoline	166.41	2.79%
NYMEX Heat Oil	162.1	-0.21%
ICE Gasoil	483	0.63%
NYMEX Natural Gas	2.949	0.72%

**Precious Metals**

Gold Spot \$/Oz	1286.4	-0.35%
Silver Spot \$/Oz	16.9735	-0.73%
Platinum Spot \$/Oz	979.3	0.14%
Palladium Spot \$/Oz	935.03	0.07%
Gold Future	1292	-0.21%
Silver Future	17.046	-0.47%
Platinum Future	982.6	0.17%
Palladium Future	936.15	0.34%

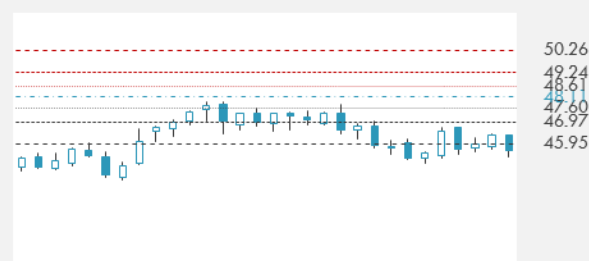
**Base Metals**

LME Aluminum	2106	0.43%
LME Copper	6688	1.87%
LME Zinc	3118	0.69%
LME Nickel	11745	0.73%
LME Lead	2357	-0.84%
LME Tin	20490	-0.17%

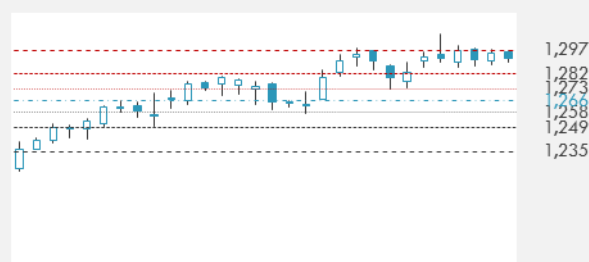
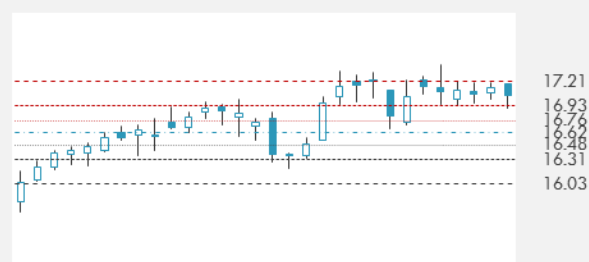
**Agricultural**

Corn CBT	356.25	0.14%
Wheat CBT	434.5	1.05%
Soybeans CBT	946.5	0.91%
Bean Meal CBT	300.9	1.48%
Rough Rice CBT	12.675	0.60%
MDE Palm Oil	2777	1.42%
Soybean CBT	35.13	0.20%
Coffee ICE	127.9	-0.62%
Sugar #11 ICE	14.02	2.56%
Cotton #2 ICE	69.83	1.36%
Cocoa ICE	1895	1.28%
Ethanol CME	1.456	-1.29%
Lumber CME	373.9	2.19%
Orange Juice ICE	133.65	1.87%
Live Cattle CME	106.825	0.61%
Feeder Cattle CME	142.4	0.49%
Lean Hogs CME	63.775	0.35%

**COMMODITY INDEX SUPPORT & RESISTANCE**

**WTI OIL 30 DAYS SUPPORT & RESISTANCE**


- Oil trimmed a fourth weekly decline as traders braced for impact from Hurricane Harvey that moved through the Gulf of Mexico toward a U.S. refining hub. Gasoline futures surged to the highest in four months.

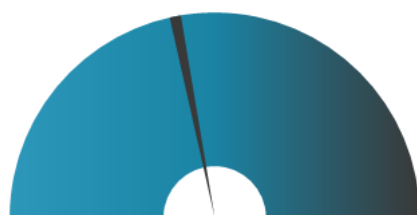
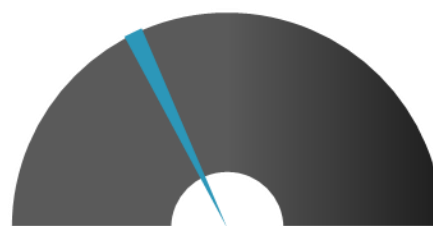
**GOLD 30 DAYS SUPPORT & RESISTANCE**

**SILVER 30 DAYS SUPPORT & RESISTANCE**


**TOP 10 WINNERS**

	Ticker	Last Price	Daily %
<b>S&amp;P 500 Stocks</b>			
SIGNET JEWELERS	SIG	60.54	16.67
PVH CORP	PVH	126.92	5.73
DOLLAR TREE INC	DLTR	78.5	5.62
ENDO INTERNATIONAL	ENDP	8.79	5.40
TRIPADVISOR INC	TRIP	43.32	4.79
ROCKWELL COLLINS	COL	129.28	3.76
SOUTHWESTRN ENGY	SWN	5.52	3.18
FRONTIER COMMUNI	FTR	12.7	2.92
HP INC	HPQ	19.41	2.92
MALLINCKRODT	MNK	38.25	2.79

**TOP 10 LOSERS**

	Ticker	Last Price	Daily %
<b>S&amp;P 500 Stocks</b>			
KELLOGG CO	K	67.91	-2.86
CONAGRA BRANDS I	CAG	33.23	-2.89
COTY INC-CL A	COTY	16.24	-2.99
CAMPBELL SOUP CO	CPB	52.48	-3.16
GENERAL MILLS IN	GIS	55.68	-3.47
TARGET CORP	TGT	54.21	-3.99
COSTCO WHOLESALE	COST	151.33	-5.04
HORMEL FOODS CRP	HRL	32.09	-5.40
KROGER CO	KR	21.1	-8.10
JM SMUCKER CO	SJM	107.51	-9.54

**S&P 500 DISTRIBUTION**

**WINNERS**
**LOSERS**
**S&P VOLATILITY INDEX**

**LOW VOLATILITY**
**HIGH VOLATILITY**

- Moderating its price expectations, General Electric has resumed negotiations to sell its industrial solutions business to ABB, which offers circuit breakers, panel boards and other electrical equipment. The move underscores the determination of John Flannery, who took over as GE's chief executive on Aug. 1, to continue divesting non-core assets and review the company's portfolio.
- Ford has poached Jason Luo, previously chief executive of Key Safety Systems (which is acquiring troubled air bag maker Takata), to lead its business in greater China. The announcement comes a day after Ford said it was in talks to form a joint venture to develop and sell electric cars in the Chinese market, as it attempts to catch up with international rivals.
- Samsung Group has no 'Plan B' for taking big decisions if its de facto leader Jay Y. Lee is jailed for corruption, according to Reuters. He has been in detention since February, on trial for charges ranging from embezzlement to perjury in a scandal that has rocked South Korea.
- The European Aviation Safety Agency has issued an emergency directive for operators of the Airbus A350-900 to upload a software fix to prevent potential overheating of the hydraulic system and a risk of explosion.
- New research from Gartner says the global wearables market will grow 16.7% this year driven by strong smartwatch sales led by Apple. Smartwatch sales will account for \$9.3B of the total \$30.5B in wearable sales this year.
- Petrobras temporarily suspends its chief compliance officer following a government ethics committee ruling that his decision to hire an auditing firm where his daughter worked represented a conflict of interest.

**KEY ECONOMIC INDICATORS**

Country	Event	Surv(M)	Actual	Prior	Time
France	Consumer Confidence	103	103	104	9:45
Germany	IFO Business Climate	115.5	--	116	11:00
Germany	IFO Expectations	106.8	--	107.3	11:00
Germany	GDP SA QoQ	0.60%	0.60%	0.60%	9:00
Germany	IFO Current Assessment	125	--	125.4	11:00
Germany	GDP WDA YoY	2.10%	2.10%	2.10%	9:00
Germany	Import Price Index MoM	0.00%	-0.40%	-1.10%	9:00
Germany	Import Price Index YoY	2.30%	1.90%	2.50%	9:00
Japan	Tokyo CPI Ex-Fresh Food YoY	0.30%	0.40%	0.20%	2:30
Japan	Natl CPI YoY	0.40%	0.40%	0.40%	2:30
Japan	Natl CPI Ex Fresh Food YoY	0.50%	0.50%	0.40%	2:30
Japan	Tokyo CPI YoY	0.30%	0.50%	0.10%	2:30
Japan	PPI Services YoY	0.80%	0.60%	0.80%	2:50
Japan	Natl CPI Ex Fresh Food, Energy YoY	0.10%	0.10%	0.00%	2:30
United States	Durable Goods Orders	-6.00%	--	6.40%	15:30
United States	Durables Ex Transportation	0.40%	--	0.10%	15:30
United States	Baker Hughes U.S. Rig Count	--	--	946	20:00
United States	Cap Goods Orders Nondef Ex Air	0.40%	--	0.00%	15:30
United States	Cap Goods Ship Nondef Ex Air	0.20%	--	0.10%	15:30
United States	Existing Home Sales MoM	0.50%	--	-1.80%	17:00

**Banque BEMO sal**
**Head Office - Private and Corporate Banking**

96 Pasteur Building, Pasteur Street, Medawar Area, P.O. Box: 16-6353, Beirut - Lebanon  
Tel: + 961 1 568 250 Fax: + 961 1 568 266

**Investment & Research** [research@bemobank.com](mailto:research@bemobank.com)

Beirut Central District Riad El Solh Square, Esseily Building Bloc A, 7th Floor Beirut - Lebanon  
Tel: + 961 1 992 600 Fax: + 961 1 983 368  
[www.bemobank.com](http://www.bemobank.com)

**Disclaimer:**

This report is published for information purposes only. The information herein has been compiled from, or based upon sources considered to be reliable (Bloomberg, SeekingAlpha, DailyStar...), but we do not guarantee or assume responsibility for its completeness and accuracy. This document should not be construed as a solicitation to take part in any investment, or as constituting any representation or warranty on our part. This report is not to be relied upon in substitution for the exercise of specialists.

We may not have taken any steps to ensure that the securities referred to in this report are suitable for any particular investor. The investments and services contained or referred to herein are not purported to be exhaustive, any person considering an investment should seek specialist advice on the suitability of an investment.

Nothing in this report constitutes investment, legal, accounting or tax advice, or a representation that any investment or strategy is suitable or appropriate to your individual circumstances, or otherwise constitutes a personal recommendation. Clients understand that it is their responsibility to seek legal and/or tax advice regarding the legal and tax consequences of their investment transactions. The consequences of any action taken on the basis of information contained herein are solely the responsibility of the recipient.

Investment instruments are subject to risk, including possible loss of principal amount invested. Past performance should not be taken as an indication or guarantee of future performance, and no representation or warranty, express or implied, is made regarding future performance. The value of securities and financial instruments is subject to exchange rate fluctuation that may have a positive or adverse effect on the price or income of such securities or financial instruments. Some investments mentioned in this report may have a high level of volatility. High volatility investments may experience sudden and large falls in their value causing losses when that investment is realized. Some investments may not be readily realizable and it may be difficult to sell or realize those investments, similarly it may prove difficult to obtain reliable information about the value, or risks, to which such an investment is exposed.

This report may provide the addresses of websites or references. We have not reviewed any such site and takes no responsibility for the content contained therein. Such address or reference is provided solely for convenience and information. Accessing such website through this report shall be at the recipients own risk.