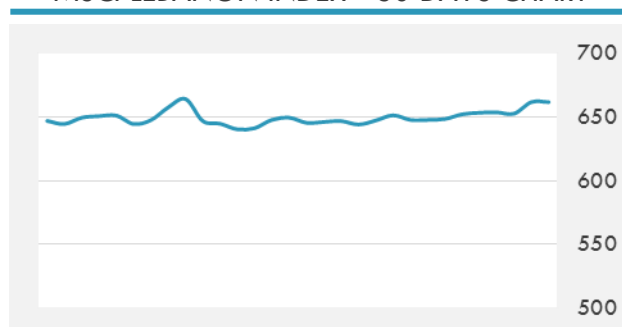
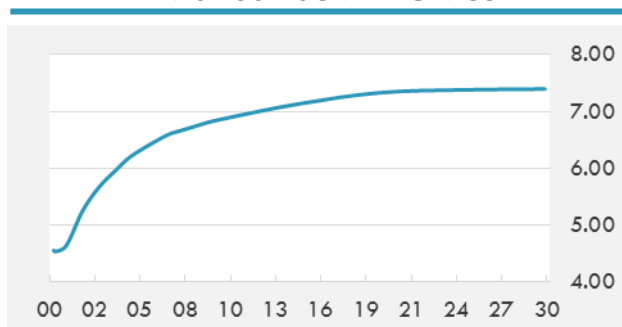


BEIRUT STOCK EXCHANGE

	Last	Daily %	YTD %	Dividend %
Development and Reconstruction				
Solidere A	8.41	4.08%	-18.98%	1.17%
Solidere B	8.28	5.21%	-21.14%	1.19%
Solidere GDR	7.6	0.00%	-24.00%	1.30%
Banking				
Audi Listed	5.95	-0.83%	-12.50%	8.38%
BLC Listed	0.93	0.00%	-6.06%	0.00%
BOB Listed	18.8	0.00%	0.00%	3.52%
Byblos Listed	1.61	-1.83%	-5.29%	8.22%
BEMO Listed	1.64	0.00%	-3.53%	3.27%
BLOM Listed	11.4	0.00%	7.55%	8.69%
Trading				
RYMCO	3.25	0.00%	0.00%	0.00%
Industrial				
Holcim	12.26	0.00%	4.34%	19.10%
Ciments Blancs	1.82	0.00%	15.92%	0.00%

MSCI LEBANON INDEX - 30 DAYS CHART

LEBANESE USD SOVEREIGN CURVE


- Lebanese banks are making their presence felt in the international market as a recent report showed that 10 local lenders are among the top 1,000 banks in the world in terms of the size of the balance sheets.
- In the first half of 2017, MENA M&A activity witnessed 192 deals, representing a decline of 23% when compared with 250 deals in the first half of 2016, EY report released Sunday revealed.

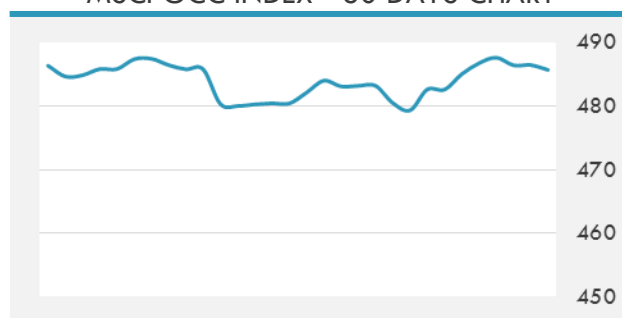
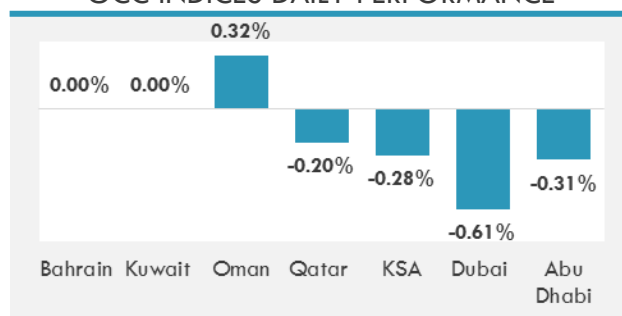
Source: TheDailyStar, GulfBase

GCC EQUITY INDICES

	Last Price	Daily %	YTD %
Bahrain	1302.13	0.00%	6.69%
Kuwait	6885.17	0.00%	19.64%
Oman	4962.54	0.32%	-14.18%
Qatar	8933.52	-0.20%	-14.40%
KSA	7225.18	-0.28%	0.20%
Dubai	3602.55	-0.61%	1.71%
Abu Dhabi	4479.99	-0.31%	-1.58%

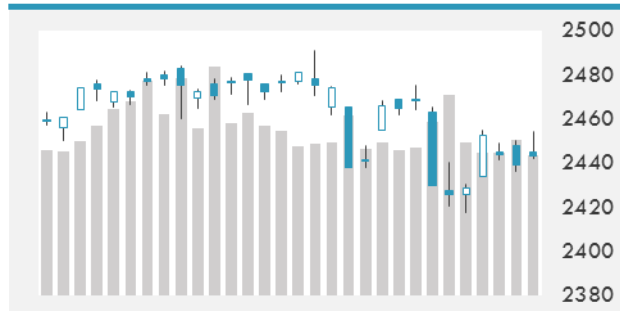
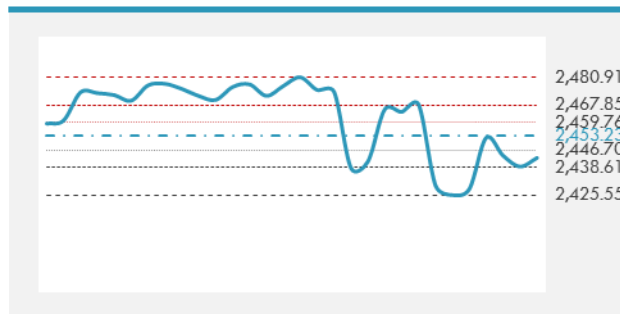
LOCAL/GCC FOREIGN EXCHANGE

	Cross	Last Price
Lebanese Pound Spot	USD/LBP	1506.5
Bahraini Dinar Spot	USD/BHD	0.37708
Kuwaiti Dinar Spot	USD/KWD	0.30151
Omani Rial Spot	USD/OMR	0.385
Qatari Riyal Spot	USD/QAR	3.6574
Saudi Riyal Spot	USD/SAR	3.7502
UAE Dirham Spot	USD/AED	3.673

MSCI GCC INDEX - 30 DAYS CHART

GCC INDICES DAILY PERFORMANCE


UNITED STATES EQUITY MARKET INDICES

	Last Price	Daily %	YTD %	Δ10D Vol
Major Indices				
Dow Jones	21813.67	0.14%	10.38%	-0.72%
S&P 500	2443.05	0.17%	9.12%	-1.51%
Nasdaq	6265.644	-0.09%	16.39%	-2.11%
Sectors Indices				
Discretionary	704.38	0.26%	8.73%	-0.71%
Staples	561.3	0.24%	5.55%	-0.49%
Energy	461.78	0.52%	-16.72%	0.68%
Financials	410.64	0.24%	6.24%	-2.45%
Healthcare	910.4	-0.12%	14.24%	-0.57%
Industrials	574.27	0.44%	6.73%	-1.21%
IT	989.79	-0.11%	22.51%	-2.53%
Materials	340.5	0.27%	9.08%	-0.81%
Telecom	159.06	0.79%	-9.94%	-1.12%
Utilities	278.22	0.31%	12.72%	-0.32%
Real Estate	202	0.41%	6.19%	-3.03%

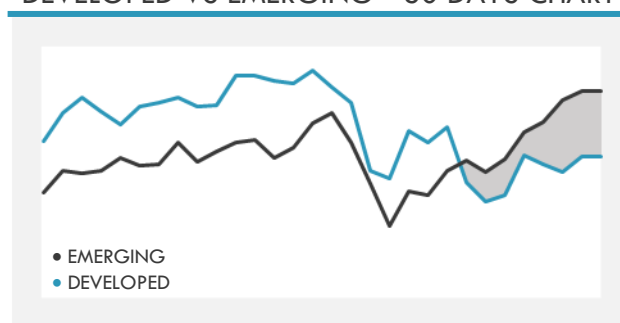
S&P 500 INDEX - 30 DAYS CHART

S&P 500 SUPPORT & RESISTANCE


- U.S. equity markets strengthened Friday on broad-based gains as central bankers meet in Jackson Hole and amid a report that Gary Cohn won't leave the White House.
- European stocks inched lower in light trading as a spike in euro to the highest level against the dollar since 2015 crimped the region's equities.
- Asian equities rose as Chinese financials gained ahead of earnings next week and Japanese automaker shares advanced after the yen slipped against the dollar.

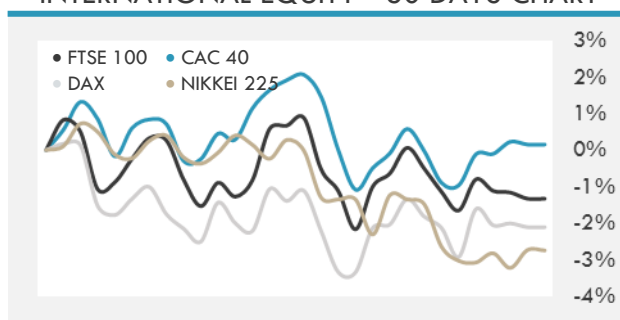
Source: Bloomberg

INTERNATIONAL MARKETS INDICES

	Last Price	Daily %	YTD %	Δ10D Vol
World	1161.2	0.26%	12.62%	-1.21%
Developed	1944.56	0.25%	11.04%	-1.13%
Emerging	1085.37	0.27%	25.87%	-1.04%
Frontier	2818.8	0.49%	16.56%	-2.69%
Europe	126.28	-0.11%	3.09%	-1.82%
Latin America	2893.3	0.12%	23.61%	-0.36%
Asia Pacific	160.46	0.30%	18.82%	0.08%

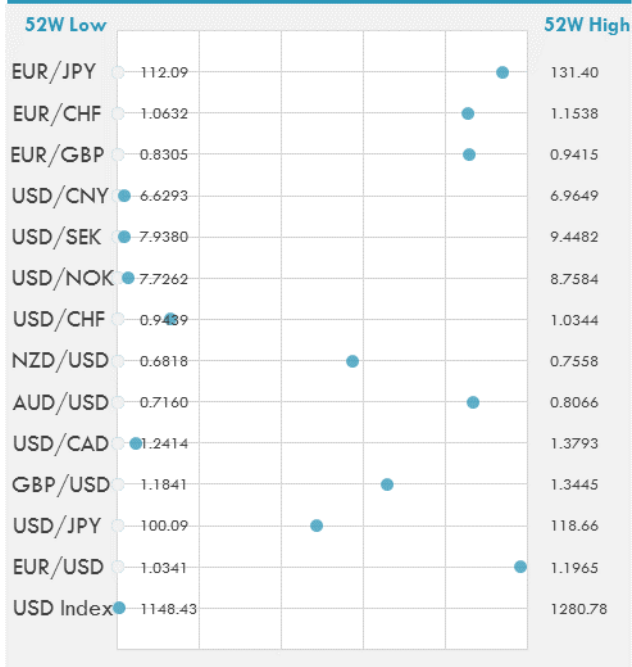
DEVELOPED VS EMERGING - 30 DAYS CHART

INTERNATIONAL EQUITY INDICES

	Last Price	Daily %	YTD %	Δ10D Vol
EuroStoxx 50	3438.55	-0.18%	4.50%	-2.31%
FTSE 100	7401.46	-0.08%	3.62%	-0.36%
CAC 40	5104.33	-0.17%	4.98%	-2.08%
DAX	12167.94	-0.11%	5.98%	-1.86%
Swiss SMI	8906.18	-0.41%	8.35%	-3.92%
Nikkei 225	19449.9	-0.01%	1.76%	-0.48%
CSI 300	3841.89	1.22%	16.07%	1.43%

INTERNATIONAL EQUITY - 30 DAYS CHART


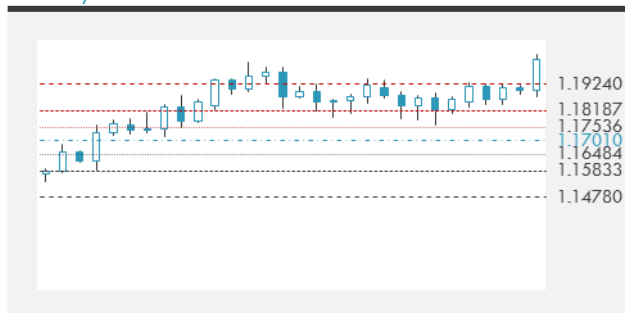
FOREIGN EXCHANGE MARKET

	Last Price	Daily %	Δ10D	Vol 25	ΔRR
Major USD Cross Rate					
USD Index	1149.24	-0.06%	-0.73%	-	
EUR/USD	1.1932	0.07%	-0.60%	0.155	
USD/JPY	109.12	-0.22%	-2.27%	-0.600	
GBP/USD	1.2891	0.07%	-1.32%	-0.305	
USD/CAD	1.2476	-0.04%	-0.46%	0.243	
AUD/USD	0.7942	0.13%	-0.52%	-0.430	
NZD/USD	0.724	-0.01%	-0.76%	-0.485	
USD/CHF	0.9558	-0.13%	-0.12%	-0.318	
USD/NOK	7.7544	0.02%	-0.21%	0.153	
USD/SEK	7.9675	0.04%	-0.08%	-0.148	
USD/CNY	6.6350	-0.17%	-0.50%	0.425	
Major EUR Cross Rate					
EUR/GBP	0.92561	0.01%	0.01%	0.228	
EUR/CHF	1.14051	0.10%	-0.19%	-0.275	
EUR/JPY	130.21	-0.14%	-0.42%	-0.678	

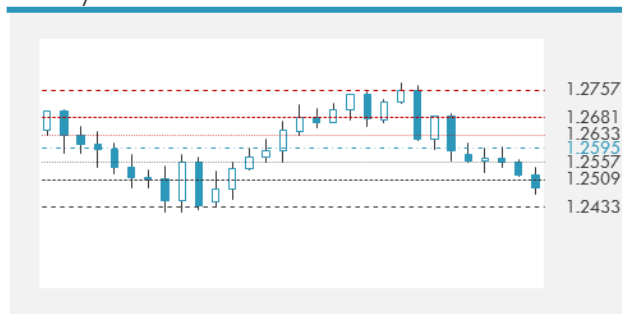
DISTANCE FROM 52 WEEKS LOW/HIGH


- The dollar fell for a second day versus the yen as the focus turns to a slowing U.S. economy after Federal Reserve Chair Janet Yellen failed to discuss monetary policy at Jackson Hole.
- European currencies, including the euro, will likely accelerate their appreciation against the dollar, dragging down the yen on the crosses after Yellen and Draghi gave no hint over their monetary policies at Jackson Hole.

Source: Bloomberg

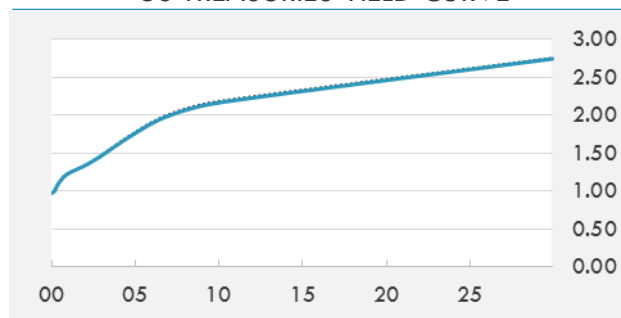
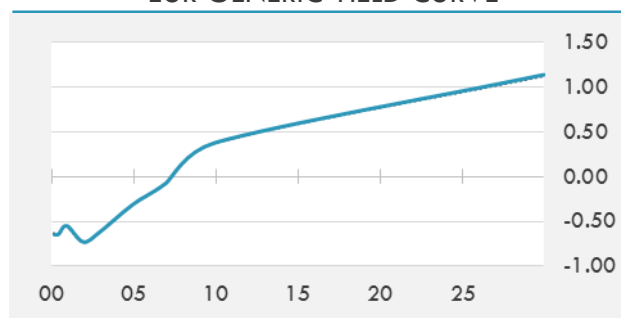
EUR/USD 30 DAYS SUPPORT & RESISTANCE

GBP/USD 30 DAYS SUPPORT & RESISTANCE

USD/JPY 30 DAYS SUPPORT & RESISTANCE

USD/CAD 30 DAYS SUPPORT & RESISTANCE


GLOBAL BOND INDICES

	Yield	ΔYield (in Bps)
Benchmark Indices		
US 10 Years Benchmark	2.1659	-0.028
EU 10 Years Benchmark	0.38	0.004
UK 10 Years Benchmark	1.053	0.000
Sovereign Bonds		
US Treasury Bond	1.796	-0.01
Eurozone Sovereign Bond	0.614	0.005
U.K. Sovereign Bond	1.061	-0.002
Japan Sovereign Bond	0.092	-0.008
USD Emerging Sovereign Bond	4.458	-0.023
Corporate Bonds		
US Investment Grade Bond	3.112	-0.015
US High Yield Bond	5.773	-0.021
EUR Investment Grade Bond	0.613	0.006
EUR High Yield Bond	1.94	0.053
USD Emerging Market IG & HY	4.596	0.005

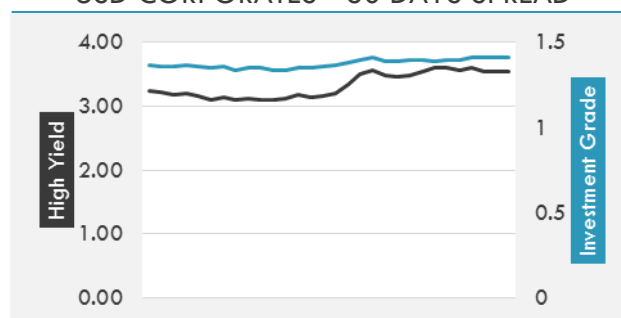
US TREASURIES YIELD CURVE

EUR GENERIC YIELD CURVE


- Bond traders are betting that no matter who's leading the Federal Reserve come February, policy makers won't stray from the path they've been laying out for months.
- Bund futures called to open little changed. Treasuries held gains late on Friday with Draghi offering no comments on policy outlook, before flat-lining in Asian hours as volumes slumped to ~63% of recent averages.

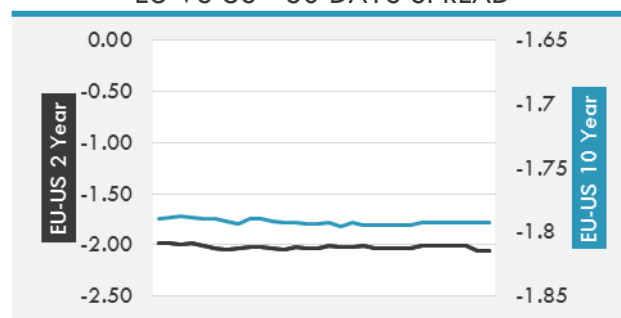
Source: Bloomberg

OVERNIGHT RATES - SWAPS

	Yield	ΔYield (in Bps)
3M USD LIBOR	1.31778	0.0006
3M EUR EURIBOR	-0.329	0.0000
3M GBP LIBOR	0.28025	0.0003
3Y USD SWAP	1.6524	-0.0158
5Y USD SWAP	1.8092	-0.0156
10Y USD SWAP	2.1089	-0.0258
30Y USD SWAP	2.3989	-0.0199

USD CORPORATES - 30 DAYS SPREAD

FIXED INCOME SPREADS

	Spread	ΔSpread (in Bps)
USD 3M vs 10Y Spread	1.14822	(0.0254)
USD 2Y vs 10Y Spread	0.82817	(0.0319)
USD IG Spread	1.41	-
USD HY Spread	3.54	(0.0100)
EU vs US 10Y Spread	-1.7862	(0.0067)
EU vs US 2Y Spread	-2.0616	(0.0528)
EM vs Benchmark Spread	242.4	0.100

EU VS US - 30 DAYS SPREAD


GLOBAL COMMODITIES MARKET

	Last Price	Daily %
Commodity Index	83.29	-0.26%

Energy

WTI Crude Future	47.87	0.93%
Brent Crude Future	52.41	0.71%
NYMEX Gasoline	166.66	0.15%
NYMEX Heat Oil	162.23	0.08%
ICE Gasoil	480.25	-0.57%
NYMEX Natural Gas	2.892	-1.93%

Precious Metals

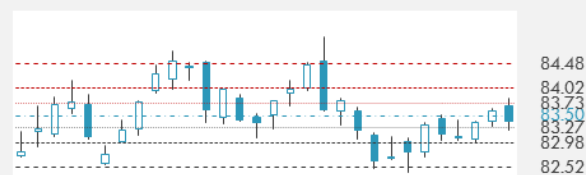
Gold Spot \$/Oz	1291.35	0.38%
Silver Spot \$/Oz	17.0665	0.55%
Platinum Spot \$/Oz	974.65	-0.47%
Palladium Spot \$/Oz	928.24	-0.73%
Gold Future	1297.9	0.46%
Silver Future	17.132	0.50%
Platinum Future	979.1	-0.36%
Palladium Future	926.45	-0.48%

Base Metals

LME Aluminum	2070	-1.71%
LME Copper	6666	-0.33%
LME Zinc	3064	-1.75%
LME Nickel	11485	-2.21%
LME Lead	2325	-1.36%
LME Tin	20325	-0.81%

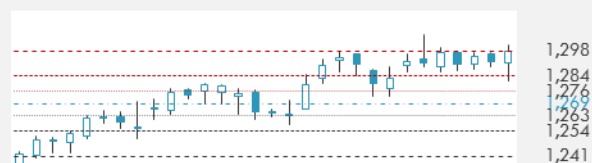
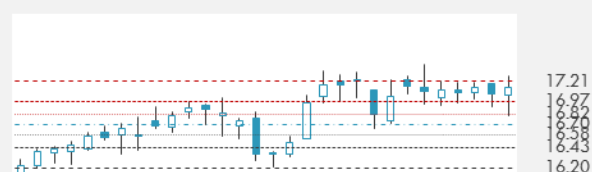
Agricultural

Corn CBT	353.5	-0.77%
Wheat CBT	435.25	0.17%
Soybeans CBT	944.5	-0.21%
Bean Meal CBT	300	-0.30%
Rough Rice CBT	12.71	0.28%
MDE Palm Oil	2750	-0.97%
Soybean CBT	34.95	-0.51%
Coffee ICE	131.4	2.74%
Sugar #11 ICE	14.03	0.07%
Cotton #2 ICE	68.15	-2.41%
Cocoa ICE	1933	2.01%
Ethanol CME	1.448	-0.55%
Lumber CME	372	-0.51%
Orange Juice ICE	135.45	1.35%
Live Cattle CME	106.925	0.09%
Feeder Cattle CME	142.95	0.39%
Lean Hogs CME	63.075	-1.10%

COMMODITY INDEX SUPPORT & RESISTANCE

WTI OIL 30 DAYS SUPPORT & RESISTANCE


- Gasoline surged to the highest in two years and oil eased as flooding from Tropical Storm Harvey inundated refining centers along the Texas coast, shutting more than 10 percent of U.S. fuel-making capacity.

Source: Bloomberg

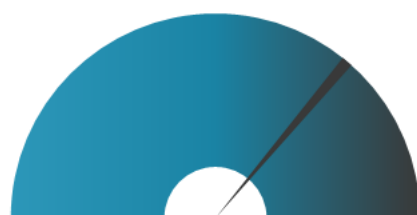
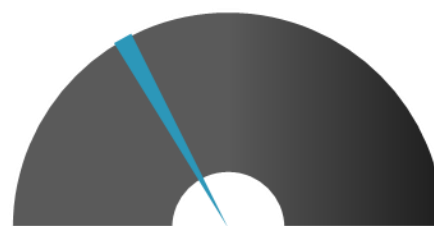
GOLD 30 DAYS SUPPORT & RESISTANCE

SILVER 30 DAYS SUPPORT & RESISTANCE


TOP 10 WINNERS

	Ticker	Last Price	Daily %
S&P 500 Stocks			
URBAN OUTFITTER	URBN	21.62	8.10
AMERICAN AIRLINE	AAL	45.25	5.43
AUTODESK INC	ADSK	114.97	3.94
SOUTHWEST AIR	LUV	52.68	3.88
SIGNET JEWELERS	SIG	62.68	3.53
TRANSOCEAN LTD	RIG	7.97	3.51
NORDSTROM INC	JWN	45.34	3.47
AUTOZONE INC	AZO	528.95	3.39
CH ROBINSON	CHRW	69.07	3.29
TRACTOR SUPPLY	TSCO	59.58	3.28

TOP 10 LOSERS

	Ticker	Last Price	Daily %
S&P 500 Stocks			
JM SMUCKER CO	SJM	105.15	-2.20
MARTIN MAR MTL	MLM	195.54	-2.22
RANGE RESOURCES	RRC	18.17	-2.31
HORMEL FOODS CRP	HRL	31.34	-2.34
H&R BLOCK INC	HRB	29.71	-2.40
NRG ENERGY	NRG	24.58	-3.34
SOUTHWESTRN ENGY	SWN	5.33	-3.44
TRIPADVISOR INC	TRIP	41.72	-3.69
BROADCOM LTD	AVGO	245.59	-3.71
ULTA BEAUTY INC	ULTA	212.36	-9.14

S&P 500 DISTRIBUTION

WINNERS
LOSERS
S&P VOLATILITY INDEX

LOW VOLATILITY
HIGH VOLATILITY

- A court in South Korea has sentenced Samsung's de-facto chief Jay Y. Lee to a five-year jail term following a trial where he was accused of paying bribes to gain government favors for the conglomerate.
- Transportation Secretary Elaine Chao is expected to announce the department's plans for self-driving car regulations in September, according to Recode. The guidance is highly-anticipated after President Trump's self-driving car council essentially fell apart. The Federal Committee on Automation hasn't met once under the new administration,
- Apple has removed some popular apps designed by Iranian developers, citing U.S. sanctions, according to The Verge. Iran doesn't have its own App Store since iPhone sales are banned in the country, but Iranian developers list apps in the Stores of other countries.
- Amazon announces a new fulfillment center coming to North Randall, Ohio near Cleveland. The 855K square foot facility will employ 2K full-time associates.
- General Motors notified a couple hundred Chevy Bolt owners about a battery problem, according to PluginCars.com. The limited issue is related to malfunctioning cells that could lead to a false dashboard reading on range.
- Bloomberg reports that Apple plans to release an Apple TV model with 4K HDR streaming capabilities. The new Apple TV box would likely debut during the launch event next month alongside the new iPhones and Watch Series 3. The launch event is rumored for September 12.
- Uber investor Shervin Pishevar has filed a legal document and sent the board a letter saying he needs to "intervene" in the Benchmark lawsuit accusing former CEO Travis Kalanick of fraud.

KEY ECONOMIC INDICATORS

Country	Event	Surv(M)	Actual	Prior	Time
China	Foreign Direct Investment YoY CNY	--	--	2.30%	
Eurozone	M3 Money Supply YoY	4.90%	--	5.00%	11:00
Eurozone	Mogherini Speaks at EU Ambassadors				10:30
France	France to Sell Up to EUR3.3 Bln 91-Day Bills				15:50
France	France to Sell Up to EUR1.3 Bln 140-Day Bills				15:50
France	France to Sell Up to EUR1.2 Bln 350-Day Bills				15:50
Germany	AfD Party Co-Leader Holds News Conference				12:00
Italy	Manufacturing Confidence	108	--	107.7	11:00
Italy	Consumer Confidence Index	106.9	--	106.7	11:00
Italy	Economic Sentiment	--	--	105.5	11:00
Italy	Italy to Sell Up to EUR2 Bln Zero 2019 Bonds				12:00
Japan	BOJ Outright Bond Purchase 1~3 Years				4:10
Japan	BOJ Outright Bond Purchase 3~5 Years				4:10
United Arab Emirates	Dubai Airport Cargo Volume YoY	--	--	-4.60%	
United States	Wholesale Inventories MoM	0.30%	--	0.70%	15:30
United States	Dallas Fed Manf. Activity	16.8	--	16.8	17:30
United States	Advance Goods Trade Balance	-\$64.5b	--	-\$63.9b	15:30
United States	Retail Inventories MoM	--	--	0.60%	15:30
United States	U.S. to Sell USD33 Bln 6-Month Bills				18:30
United States	U.S. to Sell USD26 Bln 2-Year Notes				18:30

Source: Bloomberg

Banque BEMO sal
Head Office - Private and Corporate Banking

 96 Pasteur Building, Pasteur Street, Medawar Area, P.O. Box: 16-6353, Beirut - Lebanon
 Tel: + 961 1 568 250 Fax: + 961 1 568 266

Investment & Research research@bemobank.com

 Beirut Central District Riad El Solh Square, Esseily Building Bloc A, 7th Floor Beirut - Lebanon
 Tel: + 961 1 992 600 Fax: + 961 1 983 368
 www.bemobank.com

Disclaimer:

This report is published for information purposes only. The information herein has been compiled from, or based upon sources considered to be reliable (Bloomberg, SeekingAlpha, DailyStar...), but we do not guarantee or assume responsibility for its completeness and accuracy. This document should not be construed as a solicitation to take part in any investment, or as constituting any representation or warranty on our part. This report is not to be relied upon in substitution for the exercise of specialists.

We may not have taken any steps to ensure that the securities referred to in this report are suitable for any particular investor. The investments and services contained or referred to herein are not purported to be exhaustive, any person considering an investment should seek specialist advice on the suitability of an investment.

Nothing in this report constitutes investment, legal, accounting or tax advice, or a representation that any investment or strategy is suitable or appropriate to your individual circumstances, or otherwise constitutes a personal recommendation. Clients understand that it is their responsibility to seek legal and/or tax advice regarding the legal and tax consequences of their investment transactions. The consequences of any action taken on the basis of information contained herein are solely the responsibility of the recipient.

Investment instruments are subject to risk, including possible loss of principal amount invested. Past performance should not be taken as an indication or guarantee of future performance, and no representation or warranty, express or implied, is made regarding future performance. The value of securities and financial instruments is subject to exchange rate fluctuation that may have a positive or adverse effect on the price or income of such securities or financial instruments. Some investments mentioned in this report may have a high level of volatility. High volatility investments may experience sudden and large falls in their value causing losses when that investment is realized. Some investments may not be readily realizable and it may be difficult to sell or realize those investments, similarly it may prove difficult to obtain reliable information about the value, or risks, to which such an investment is exposed.

This report may provide the addresses of websites or references. We have not reviewed any such site and takes no responsibility for the content contained therein. Such address or reference is provided solely for convenience and information. Accessing such website through this report shall be at the recipients own risk.