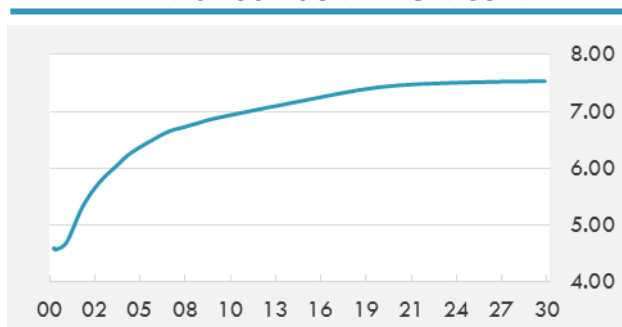


BEIRUT STOCK EXCHANGE

	Last	Daily %	YTD %	Dividend %
Development and Reconstruction				
Solidere A	8.23	1.11%	-20.71%	1.20%
Solidere B	8.07	-0.12%	-23.14%	1.22%
Solidere GDR	7.6	0.00%	-24.00%	1.30%
Banking				
Audi Listed	5.91	0.00%	-13.09%	8.43%
BLC Listed	0.93	0.00%	-6.06%	0.00%
BOB Listed	18.8	0.00%	0.00%	3.52%
Byblos Listed	1.6	0.00%	-5.88%	8.22%
BEMO Listed	1.64	0.00%	-3.53%	3.27%
BLOM Listed	11.4	0.00%	7.55%	8.69%
Trading				
RYMCO	3.25	0.00%	0.00%	0.00%
Industrial				
Holcim	12.51	2.04%	6.47%	19.08%
Ciments Blancs	1.82	0.00%	15.92%	0.00%

MSCI LEBANON INDEX - 30 DAYS CHART

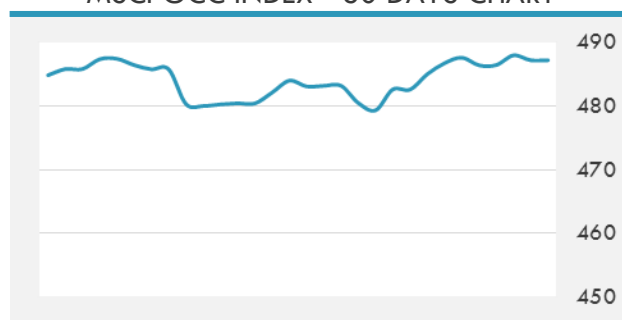
LEBANESE USD SOVEREIGN CURVE


- Moody's rating agency downgraded the long-term deposits rating of Bank Audi, BLOM Bank and Byblos Bank to B3 from B2 due to the increasing exposure of these lenders to Lebanon's growing public debt.
- Fitch Ratings downgraded Qatar's sovereign ratings citing concerns of adverse impact on the economy from the economic sanctions imposed by Arab nations led by Saudi Arabia, the UAE and Bahrain.

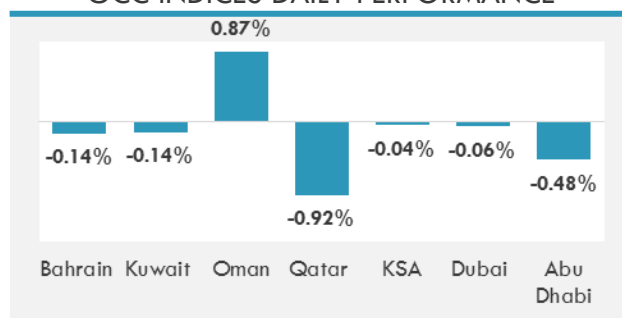
Source: TheDailyStar, GulfBase

GCC EQUITY INDICES

	Last Price	Daily %	YTD %
Bahrain	1298.79	-0.14%	6.42%
Kuwait	6899.45	-0.14%	19.65%
Oman	5047.01	0.87%	-12.59%
Qatar	8858.9	-0.92%	-15.12%
KSA	7258.64	-0.04%	0.67%
Dubai	3610.77	-0.06%	2.64%
Abu Dhabi	4463.56	-0.48%	-2.01%

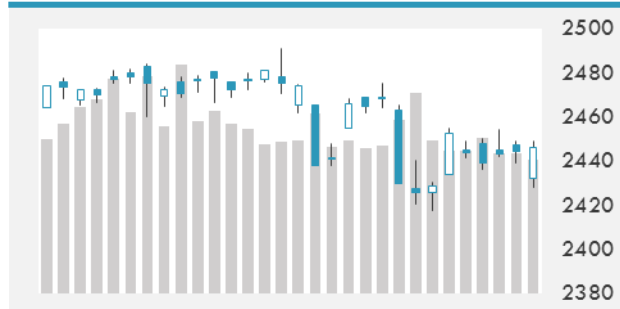
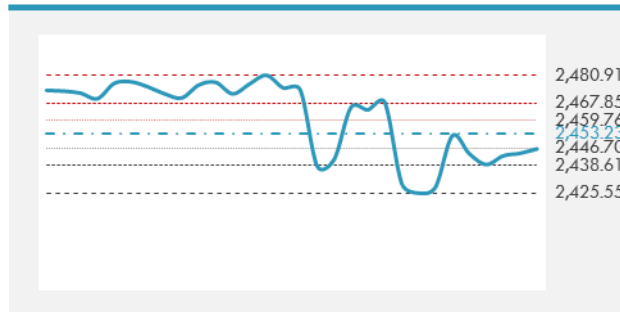
MSCI GCC INDEX - 30 DAYS CHART

LOCAL/GCC FOREIGN EXCHANGE

	Cross	Last Price
Lebanese Pound Spot	USD/LBP	1514
Bahraini Dinar Spot	USD/BHD	0.37705
Kuwaiti Dinar Spot	USD/KWD	0.30159
Omani Rial Spot	USD/OMR	0.38499
Qatari Riyal Spot	USD/QAR	3.68
Saudi Riyal Spot	USD/SAR	3.7502
UAE Dirham Spot	USD/AED	3.673

GCC INDICES DAILY PERFORMANCE


UNITED STATES EQUITY MARKET INDICES

	Last Price	Daily %	YTD %	Δ10D Vol
Major Indices				
Dow Jones	21865.37	0.26%	10.64%	0.14%
S&P 500	2446.3	0.08%	9.27%	-0.04%
Nasdaq	6301.886	0.30%	17.07%	0.09%
Sectors Indices				
Discretionary	703.71	-0.19%	8.63%	-0.49%
Staples	561.7	0.27%	5.62%	-0.08%
Energy	459.06	-0.12%	-17.21%	-1.44%
Financials	406.76	-0.47%	5.23%	0.09%
Healthcare	917.43	0.17%	15.12%	-0.05%
Industrials	578.04	0.65%	7.43%	0.66%
IT	996.6	0.41%	23.35%	0.13%
Materials	339.38	-0.56%	8.72%	-0.63%
Telecom	158.67	-0.23%	-10.16%	0.02%
Utilities	278.43	-0.15%	12.80%	0.11%
Real Estate	200.96	-0.07%	5.64%	-0.06%

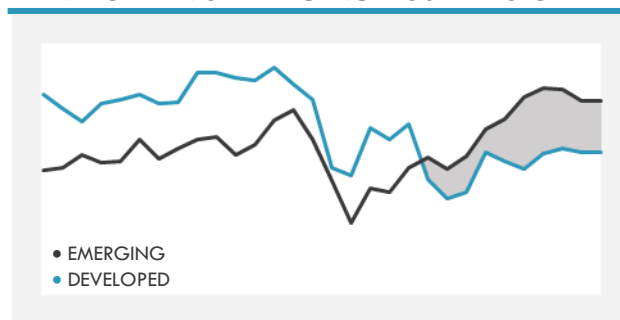
S&P 500 INDEX - 30 DAYS CHART

S&P 500 SUPPORT & RESISTANCE


- U.S. stocks closed higher Tuesday after reversing early losses after North Korea launched a ballistic missile over Japan. Industrial shares led the market higher as President Trump visited Texas and investors analyzed which companies stand to benefit from the recovery effort.
- European stocks dropped to the lowest level since February after North Korea fired an unidentified ballistic missile over Japan.
- Asian equities advanced as fears of escalating geopolitical risk eased following U.S. President Donald Trump's tempered response to North Korea's launch of a ballistic missile across Japan.

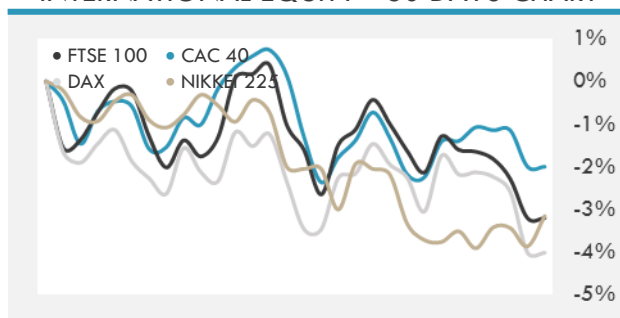
Source: Bloomberg

INTERNATIONAL MARKETS INDICES

	Last Price	Daily %	YTD %	Δ10D Vol
World	1160.94	-0.10%	12.60%	-0.20%
Developed	1945.05	-0.06%	11.07%	-0.18%
Emerging	1081.23	-0.35%	25.39%	0.50%
Frontier	2815.78	-0.25%	16.43%	0.85%
Europe	124.4	-1.03%	1.55%	-0.21%
Latin America	2876.23	-0.11%	22.88%	-0.65%
Asia Pacific	160.19	-0.17%	18.62%	0.15%

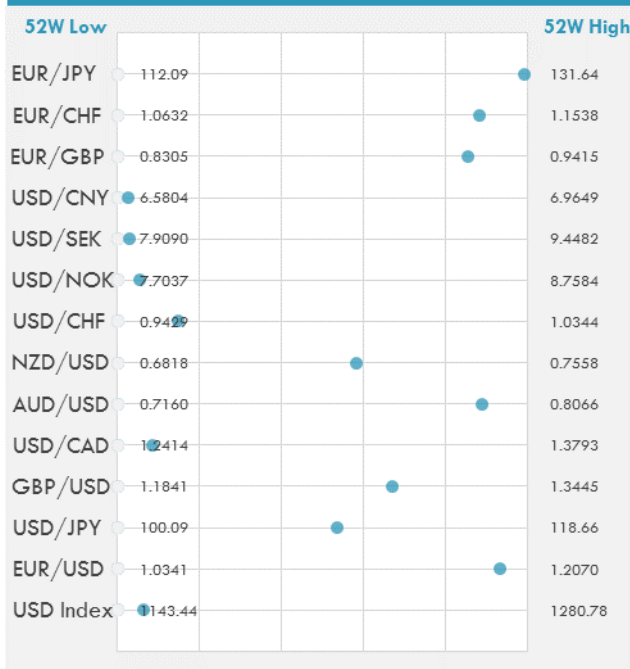
DEVELOPED VS EMERGING - 30 DAYS CHART

INTERNATIONAL EQUITY INDICES

	Last Price	Daily %	YTD %	Δ10D Vol
EuroStoxx 50	3388.22	-0.96%	2.97%	-0.38%
FTSE 100	7337.43	-0.87%	2.72%	1.00%
CAC 40	5031.92	-0.94%	3.49%	-0.64%
DAX	11945.88	-1.46%	4.05%	1.31%
Swiss SMI	8814.54	-0.56%	7.23%	-0.27%
Nikkei 225	19506.54	0.74%	2.05%	0.13%
CSI 300	3838.74	0.11%	15.97%	0.14%

INTERNATIONAL EQUITY - 30 DAYS CHART


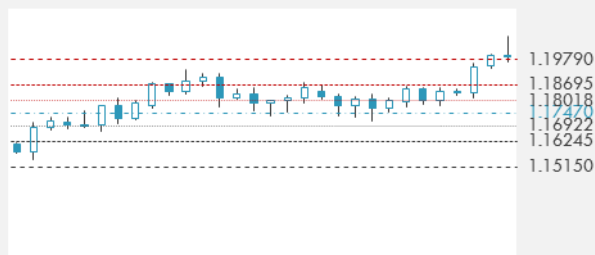
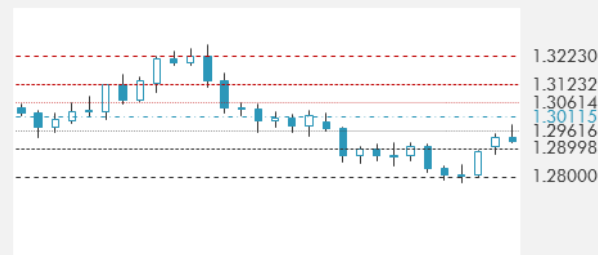
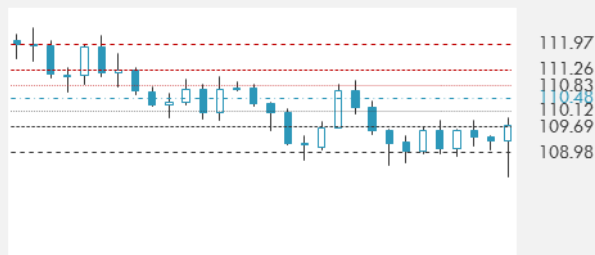
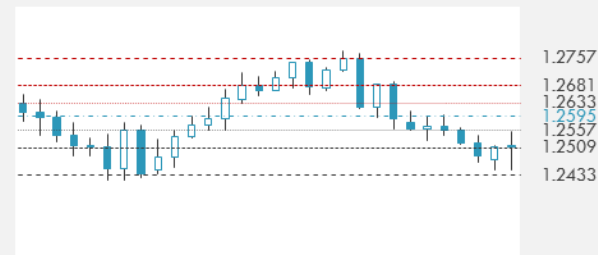
FOREIGN EXCHANGE MARKET

	Last Price	Daily %	Δ10D	Vol 25	ΔRR
Major USD Cross Rate					
USD Index	1151.9	0.07%	-0.15%	-	
EUR/USD	1.1951	-0.18%	-0.41%	0.220	
USD/JPY	110.02	0.28%	-0.59%	-1.033	
GBP/USD	1.2916	-0.02%	-0.11%	-0.225	
USD/CAD	1.2529	0.14%	-0.98%	0.258	
AUD/USD	0.7965	0.18%	-1.02%	-0.578	
NZD/USD	0.7248	-0.12%	-0.30%	-0.548	
USD/CHF	0.9565	0.07%	-0.02%	-0.388	
USD/NOK	7.7595	0.13%	-1.10%	0.090	
USD/SEK	7.9512	0.15%	-1.64%	-0.130	
USD/CNY	6.5900	-0.10%	-0.03%	0.340	
Major EUR Cross Rate					
EUR/GBP	0.92528	-0.16%	-0.11%	0.248	
EUR/CHF	1.14309	-0.09%	-2.01%	-0.283	
EUR/JPY	131.49	0.12%	-3.35%	-0.828	

DISTANCE FROM 52 WEEKS LOW/HIGH


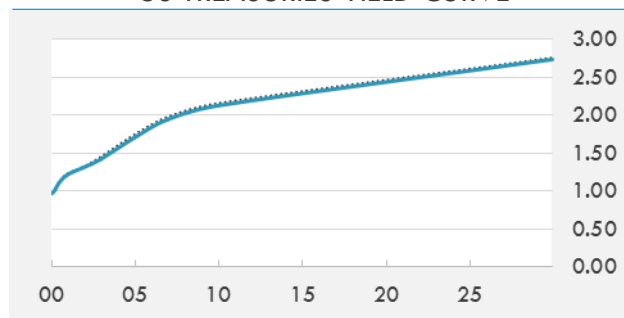
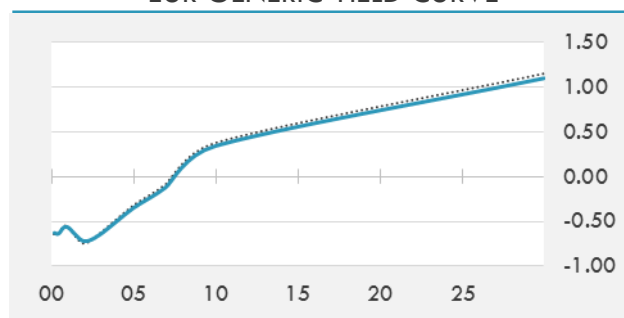
- The dollar erased its losses to post a gain for the first time in three days as risk appetite rebounded in the aftermath of North Korea's latest missile test.
- Yen holds near overnight lows and is well below its strongest level since April as focus shifts from geopolitical risks to economic data and the outlook for U.S. rates. The market will watch the BOJ's bond buying operation, after the benchmark yield hit zero for first time in four months.
- Chinese currency extends surge that's made it Asia's best performer this month, rising to its highest level since June 2016 amid a weaker dollar.

Source: Bloomberg

EUR/USD 30 DAYS SUPPORT & RESISTANCE

GBP/USD 30 DAYS SUPPORT & RESISTANCE

USD/JPY 30 DAYS SUPPORT & RESISTANCE

USD/CAD 30 DAYS SUPPORT & RESISTANCE


GLOBAL BOND INDICES

	Yield	ΔYield (in Bps)
Benchmark Indices		
US 10 Years Benchmark	2.1292	-0.028
EU 10 Years Benchmark	0.342	-0.034
UK 10 Years Benchmark	1	-0.053
Sovereign Bonds		
US Treasury Bond	1.767	-0.019
Eurozone Sovereign Bond	0.582	-0.022
U.K. Sovereign Bond	1.026	-0.032
Japan Sovereign Bond	0.085	-0.005
USD Emerging Sovereign Bond	4.455	-0.001
Corporate Bonds		
US Investment Grade Bond	3.09	-0.011
US High Yield Bond	5.752	-0.007
EUR Investment Grade Bond	0.584	-0.014
EUR High Yield Bond	1.933	0.046
USD Emerging Market IG & HY	4.555	-0.013

US TREASURIES YIELD CURVE

EUR GENERIC YIELD CURVE


- North Korea's latest missile launch may have ratcheted up geopolitical tensions to a new level, but for bond and currency traders, the primary focus is still on U.S. monetary policy.
- Tuesday's four-week Treasury bill auction may prove to be the final moment of tranquility for short-end traders before lawmakers return to work Sept. 5 to tackle the dual threats of a U.S. government shutdown and default.
- Bunds open lower following Treasuries as Tuesday's risk-off moves, spurred by North Korea missile launch, begin to unwind.

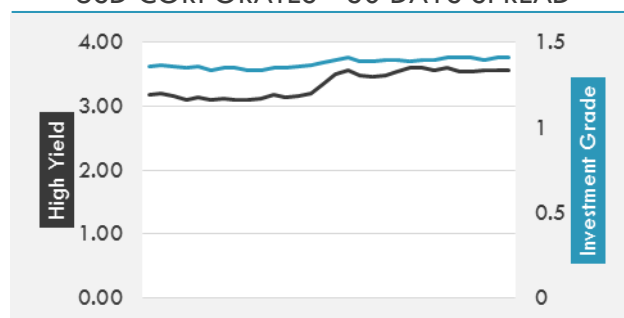
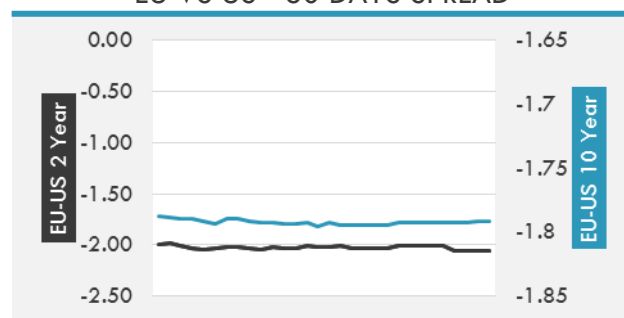
Source: Bloomberg

OVERNIGHT RATES - SWAPS

	Yield	ΔYield (in Bps)
3M USD LIBOR	1.31778	0.0000
3M EUR EURIBOR	-0.329	0.0000
3M GBP LIBOR	0.28025	0.0000
3Y USD SWAP	1.6025	-0.0281
5Y USD SWAP	1.7586	-0.0281
10Y USD SWAP	2.0696	-0.0263
30Y USD SWAP	2.3863	-0.0084

FIXED INCOME SPREADS

	Spread	ΔSpread (in Bps)
USD 3M vs 10Y Spread	1.10129	(0.0242)
USD 2Y vs 10Y Spread	0.80776	(0.0200)
USD IG Spread	1.41	0.0100
USD HY Spread	3.56	(0.0100)
EU vs US 10Y Spread	-1.7728	0.0134
EU vs US 2Y Spread	-2.0616	-
EM vs Benchmark Spread	243.9	1.300

USD CORPORATES - 30 DAYS SPREAD

EU VS US - 30 DAYS SPREAD


GLOBAL COMMODITIES MARKET

	Last Price	Daily %
Commodity Index	83.50	0.10%

Energy

WTI Crude Future	46.44	-0.28%
Brent Crude Future	52	0.21%
NYMEX Gasoline	178.33	4.15%
NYMEX Heat Oil	166.55	1.85%
ICE Gasoil	483.75	0.05%
NYMEX Natural Gas	2.983	0.74%

Precious Metals

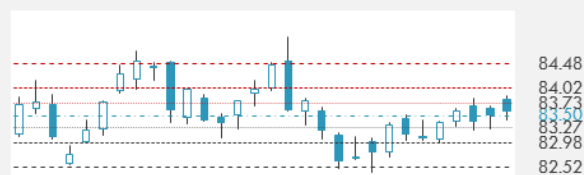
Gold Spot \$/Oz	1309.23	-0.07%
Silver Spot \$/Oz	17.3815	-0.40%
Platinum Spot \$/Oz	995.47	0.63%
Palladium Spot \$/Oz	944.41	0.91%
Gold Future	1318.9	0.27%
Silver Future	17.516	-0.07%
Platinum Future	1003.5	1.44%
Palladium Future	943.7	1.22%

Base Metals

LME Aluminum	2095	1.21%
LME Copper	6792	1.88%
LME Zinc	3110	1.52%
LME Nickel	11710	1.96%
LME Lead	2378	2.28%
LME Tin	20350	0.12%

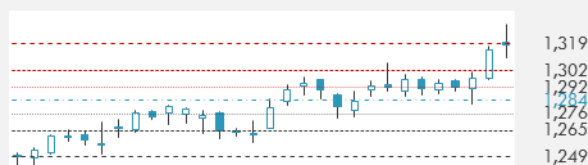
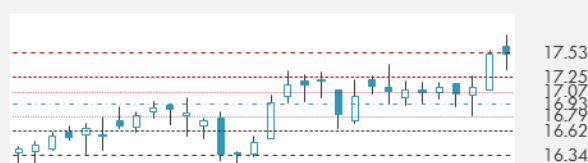
Agricultural

Corn CBT	348.75	-0.64%
Wheat CBT	429.75	0.41%
Soybeans CBT	937.25	-0.42%
Bean Meal CBT	299.2	-0.07%
Rough Rice CBT	12.605	-0.36%
MDE Palm Oil	2713	-0.91%
Soybean CBT	34.65	-0.89%
Coffee ICE	128.65	-2.06%
Sugar #11 ICE	13.82	-3.42%
Cotton #2 ICE	69.98	0.21%
Cocoa ICE	1959	-1.90%
Ethanol CME	1.451	-0.41%
Lumber CME	361.7	-1.42%
Orange Juice ICE	131.15	-1.58%
Live Cattle CME	106.1	-2.10%
Feeder Cattle CME	143.525	-1.96%
Lean Hogs CME	60.225	-2.27%

COMMODITY INDEX SUPPORT & RESISTANCE

WTI OIL 30 DAYS SUPPORT & RESISTANCE


- Crude fell as traders braced for prolonged refinery and pipeline outages before a second hit on Texas from Tropical Storm Harvey.
- Gold prices have gained about 6% this quarter, finally breaching the key \$1,300/oz Level.

Source: Bloomberg

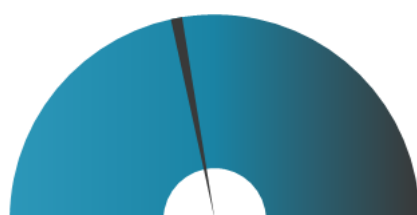
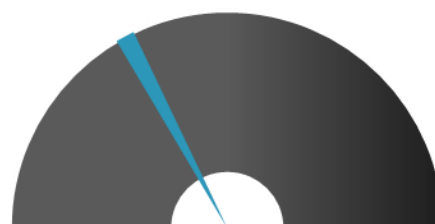
GOLD 30 DAYS SUPPORT & RESISTANCE

SILVER 30 DAYS SUPPORT & RESISTANCE


TOP 10 WINNERS

	Ticker	Last Price	Daily %
S&P 500 Stocks			
UNITED RENTALS	URI	114.94	3.82
UNITED TECH CORP	UTX	118.7	2.92
RYDER SYSTEM INC	R	77.39	2.84
TRANSOCEAN LTD	RIG	8.23	2.75
COTY INC-CL A	COTY	16.51	2.61
BROWN-FORMAN -B	BF/B	51.2	2.32
FRONTIER COMMUNI	FTR	13.55	2.26
RAYTHEON CO	RTN	182.11	2.17
ROCKWELL COLLINS	COL	130.74	2.15
ULTA BEAUTY INC	ULTA	211.78	1.94

TOP 10 LOSERS

	Ticker	Last Price	Daily %
S&P 500 Stocks			
URBAN OUTFITTER	URBN	20.77	-1.98
HCA HEALTHCARE I	HCA	77.59	-1.98
FREEMPORT-MCMORAN	FCX	15.21	-2.06
MARATHON PETROLE	MPC	51.43	-2.08
MATTEL INC	MAT	16.11	-2.19
DARDEN RESTAURAN	DRI	82.64	-2.59
UNDER ARMO-C	UA	15.34	-2.79
UNDER ARMOUR-A	UAA	16.43	-2.95
ENDO INTERNATIONAL	ENDP	8.72	-3.11
BEST BUY CO INC	BBY	55.02	-11.93

S&P 500 DISTRIBUTION

WINNERS
LOSERS
S&P VOLATILITY INDEX

LOW VOLATILITY
HIGH VOLATILITY

- Tapping into a boom for "new energy" vehicles, Nissan and its alliance partner Renault are setting up a new joint venture with Dongfeng Motor to design and build electric cars in China. The project will be called eGT New Energy Automotive. It follows a similar move by Ford, who announced a comparable joint venture last week with Anhui Zotye Automobile.
- Already trying to fix its reputation? UBER is pulling a heavily criticized feature from its app that allowed it to track riders for up to five minutes after a trip. The change, which restores users' ability to share location data only while using the app, is expected to be announced today and rolled out to iPhone users starting this week.
- Amazon cuts prices on the Amazon Music Unlimited service for Prime Student members, according to TechCrunch. Students can pay \$4.99 per month or \$6 for 6 months.
- Ford and Domino's Pizza plan to use self-driving pizza delivery cars in Michigan as part of a limited test of how consumers respond to the concept. Select customers will have the option to have their pizzas delivered via an autonomous Ford Fusion hybrid, with a safety engineer handling the last 50 feet of the pizza exchange.
- The Wall Street Journal reports that Apple and movie studios both want to offer newer films through the Apple TV but can't agree on pricing. Apple wants to offer the films for \$19.99 while studios want to charge \$5 to \$10 more.
- Amazon announces a new multi-room feature that allows Echo users to synchronize music across devices.

KEY ECONOMIC INDICATORS

Country	Event	Surv(M)	Actual	Prior	Time
Eurozone	Consumer Confidence	-1.5	--	-1.5	12:00
Germany	CPI YoY	1.80%	--	1.70%	15:00
Germany	CPI MoM	0.10%	--	0.40%	15:00
Germany	CPI EU Harmonized YoY	1.70%	--	1.50%	15:00
Germany	CPI EU Harmonized MoM	0.10%	--	0.40%	15:00
Italy	PPI MoM	--	--	0.40%	12:00
Japan	Retail Trade YoY	1.00%	1.90%	2.10%	2:50
Japan	Coking Coal Imports MT	--	5819984	6206929	3:30
Japan	Retail Sales MoM	0.30%	1.10%	0.20%	2:50
Japan	Coal and Briquettes Imports MT	--	16744972	1735491 1	3:30
Qatar	M1 Money Supply YoY	--	--	0.14%	
Qatar	M2 Money Supply YoY	--	--	7.75%	
United Kingdom	Mortgage Approvals	65.5k	--	64.7k	11:30
United States	GDP Annualized QoQ	2.70%	--	2.60%	15:30
United States	DOE U.S. Crude Oil Inventories	-1750k	--	-3327k	17:30
United States	MBA Mortgage Applications	--	--	-0.50%	14:00
United States	ADP Employment Change	185k	--	178k	15:15
United States	GDP Price Index	1.00%	--	1.00%	15:30
United States	Personal Consumption	3.00%	--	2.80%	15:30
United States	Core PCE QoQ	0.90%	--	0.90%	15:30

Source: Bloomberg

Banque BEMO sal
Head Office - Private and Corporate Banking

 96 Pasteur Building, Pasteur Street, Medawar Area, P.O. Box: 16-6353, Beirut - Lebanon
 Tel: + 961 1 568 250 Fax: + 961 1 568 266

Investment & Research research@bemobank.com

 Beirut Central District Riad El Solh Square, Esseily Building Bloc A, 7th Floor Beirut - Lebanon
 Tel: + 961 1 992 600 Fax: + 961 1 983 368
 www.bemobank.com

Disclaimer:

This report is published for information purposes only. The information herein has been compiled from, or based upon sources considered to be reliable (Bloomberg, SeekingAlpha, DailyStar...), but we do not guarantee or assume responsibility for its completeness and accuracy. This document should not be construed as a solicitation to take part in any investment, or as constituting any representation or warranty on our part. This report is not to be relied upon in substitution for the exercise of specialists.

We may not have taken any steps to ensure that the securities referred to in this report are suitable for any particular investor. The investments and services contained or referred to herein are not purported to be exhaustive, any person considering an investment should seek specialist advice on the suitability of an investment.

Nothing in this report constitutes investment, legal, accounting or tax advice, or a representation that any investment or strategy is suitable or appropriate to your individual circumstances, or otherwise constitutes a personal recommendation. Clients understand that it is their responsibility to seek legal and/or tax advice regarding the legal and tax consequences of their investment transactions. The consequences of any action taken on the basis of information contained herein are solely the responsibility of the recipient.

Investment instruments are subject to risk, including possible loss of principal amount invested. Past performance should not be taken as an indication or guarantee of future performance, and no representation or warranty, express or implied, is made regarding future performance. The value of securities and financial instruments is subject to exchange rate fluctuation that may have a positive or adverse effect on the price or income of such securities or financial instruments. Some investments mentioned in this report may have a high level of volatility. High volatility investments may experience sudden and large falls in their value causing losses when that investment is realized. Some investments may not be readily realizable and it may be difficult to sell or realize those investments, similarly it may prove difficult to obtain reliable information about the value, or risks, to which such an investment is exposed.

This report may provide the addresses of websites or references. We have not reviewed any such site and takes no responsibility for the content contained therein. Such address or reference is provided solely for convenience and information. Accessing such website through this report shall be at the recipients own risk.