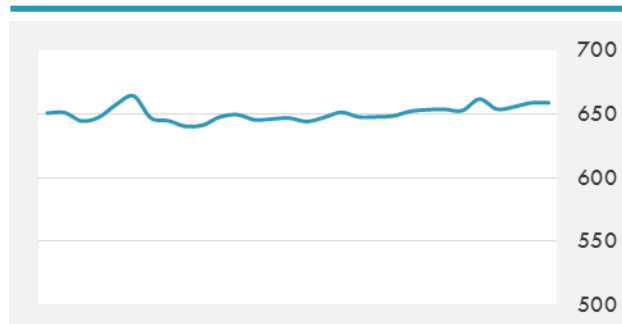
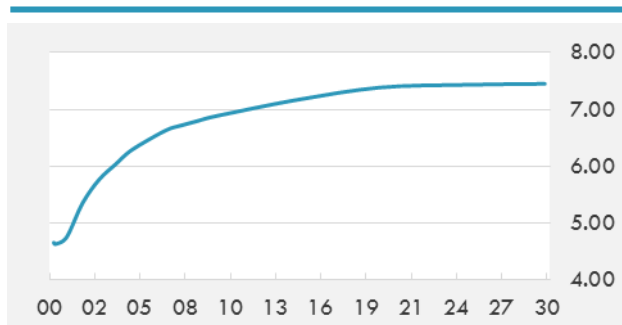


BEIRUT STOCK EXCHANGE

	Last	Daily %	YTD %	Dividend %
Development and Reconstruction				
Solidere A	8.19	-0.49%	-21.10%	1.21%
Solidere B	8.06	-0.12%	-23.24%	1.23%
Solidere GDR	7.6	0.00%	-24.00%	1.30%
Banking				
Audi Listed	5.98	1.18%	-12.06%	8.33%
BLC Listed	0.93	0.00%	-6.06%	0.00%
BOB Listed	18.8	0.00%	0.00%	3.52%
Byblos Listed	1.61	0.62%	-5.29%	8.22%
BEMO Listed	1.55	-5.49%	-8.82%	3.41%
BLOM Listed	11.5	0.88%	8.49%	8.61%
Trading				
RYMCO	3.25	0.00%	0.00%	0.00%
Industrial				
Holcim	13.5	7.91%	14.89%	17.68%
Ciments Blancs	1.82	0.00%	15.92%	0.00%

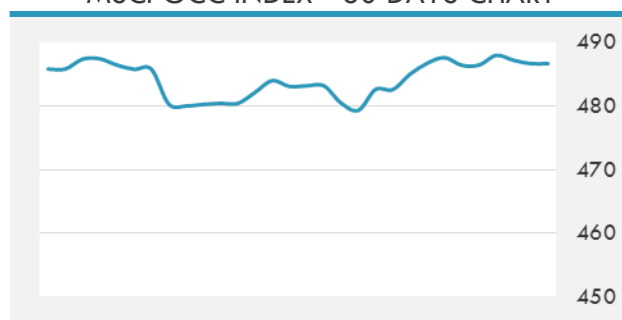
MSCI LEBANON INDEX - 30 DAYS CHART

LEBANESE USD SOVEREIGN CURVE


- The UAE's total banking sector credit returned to positive monthly growth in July, reaching 0.2 per cent month on month after a contraction of 0.5 per cent in the previous month, according to UAE Central Bank data.
- Gas-guzzling motors may be commonplace in the Gulf, but an era of electric cars whizzing along the region's superhighways is just around the corner. Adoption of electric cars is set to enter the fast lane in the Gulf, especially in tech-savvy urban hubs like Dubai.

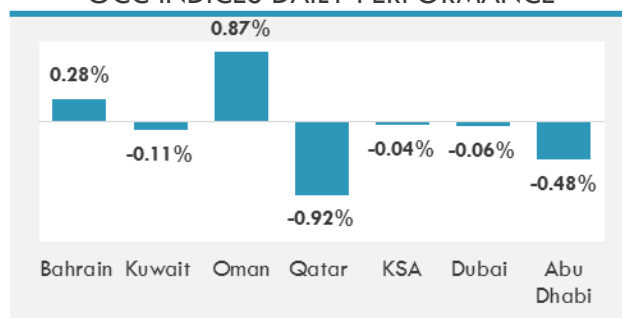
Source: TheDailyStar, GulfBase

GCC EQUITY INDICES

	Last Price	Daily %	YTD %
Bahrain	1302.46	0.28%	6.72%
Kuwait	6892.1	-0.11%	19.90%
Oman	5047.01	0.87%	-12.63%
Qatar	8858.9	-0.92%	-15.68%
KSA	7258.64	-0.04%	0.67%
Dubai	3610.77	-0.06%	3.02%
Abu Dhabi	4463.56	-0.48%	-1.71%

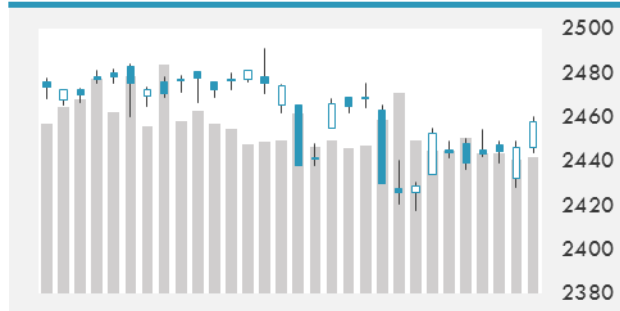
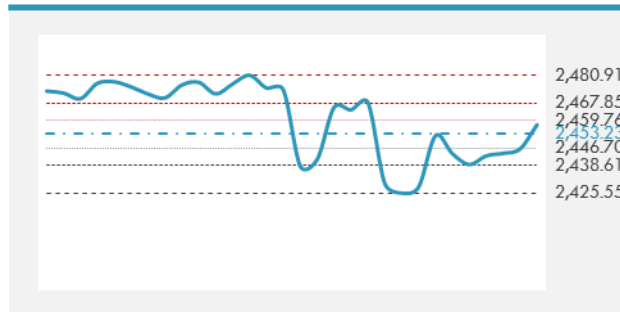
MSCI GCC INDEX - 30 DAYS CHART

LOCAL/GCC FOREIGN EXCHANGE

	Cross	Last Price
Lebanese Pound Spot	USD/LBP	1506.5
Bahraini Dinar Spot	USD/BHD	0.37706
Kuwaiti Dinar Spot	USD/KWD	0.30179
Omani Rial Spot	USD/OMR	0.38499
Qatari Riyal Spot	USD/QAR	3.6795
Saudi Riyal Spot	USD/SAR	3.7503
UAE Dirham Spot	USD/AED	3.673

GCC INDICES DAILY PERFORMANCE


UNITED STATES EQUITY MARKET INDICES

	Last Price	Daily %	YTD %	Δ10D Vol
Major Indices				
Dow Jones	21892.43	0.12%	10.78%	-3.21%
S&P 500	2457.59	0.46%	9.77%	-4.26%
Nasdaq	6368.309	1.05%	18.30%	-4.65%
Sectors Indices				
Discretionary	708.61	0.70%	9.38%	-2.58%
Staples	561.53	-0.03%	5.59%	-0.86%
Energy	459.21	0.03%	-17.18%	-3.88%
Financials	408.48	0.42%	5.68%	-4.04%
Healthcare	922.64	0.57%	15.78%	-2.67%
Industrials	579.91	0.32%	7.78%	-3.93%
IT	1004.93	0.84%	24.38%	-5.52%
Materials	341.85	0.73%	9.51%	-3.55%
Telecom	157.66	-0.64%	-10.73%	-3.33%
Utilities	277.22	-0.43%	12.31%	-1.38%
Real Estate	201.94	0.49%	6.16%	-0.81%

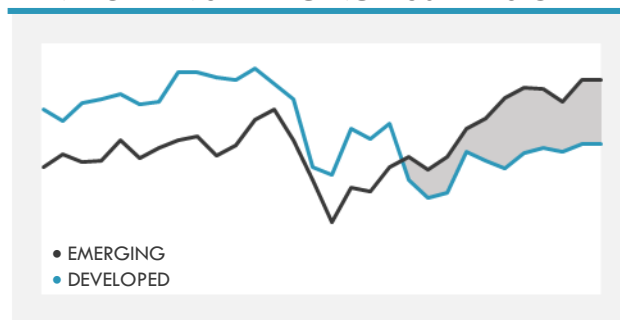
S&P 500 INDEX - 30 DAYS CHART

S&P 500 SUPPORT & RESISTANCE


- U.S. equities advanced Wednesday, shrugging off geopolitical fears as tech companies rallied and raw-material producers advanced with construction stocks.
- European stocks rose for the first time in four days as geopolitical tensions surrounding North Korea eased.
- Asian stocks advanced for a second day after data showed the economic resilience of U.S. and China, outweighing the Trump administration's mixed signals on North Korea's latest missile provocation.

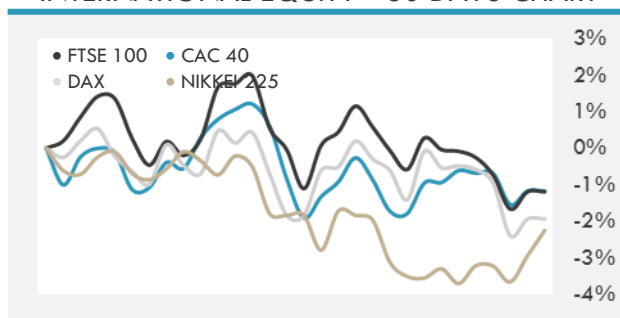
Source: Bloomberg

INTERNATIONAL MARKETS INDICES

	Last Price	Daily %	YTD %	Δ10D Vol
World	1163.09	0.19%	12.81%	-1.84%
Developed	1947.53	0.13%	11.21%	-2.34%
Emerging	1088	0.63%	26.18%	0.36%
Frontier	2808.32	-0.26%	16.13%	0.25%
Europe	125.26	0.69%	2.26%	1.27%
Latin America	2866.89	-0.32%	22.48%	-0.66%
Asia Pacific	160.3	0.07%	18.70%	-0.81%

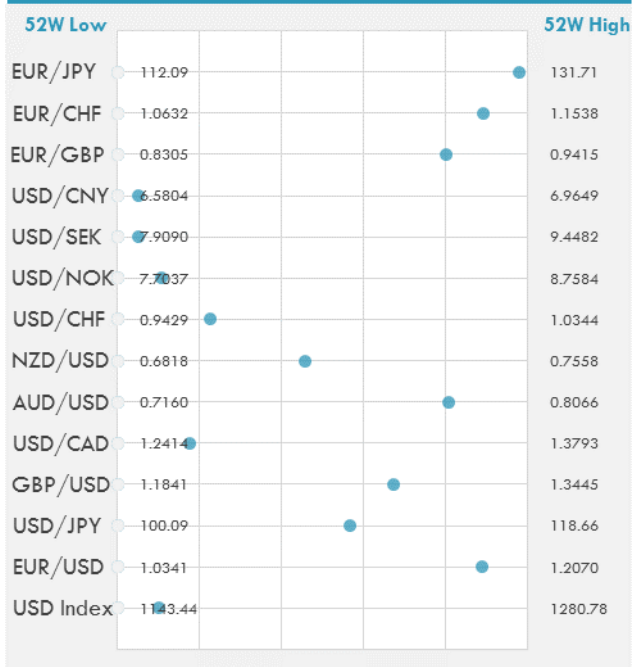
DEVELOPED VS EMERGING - 30 DAYS CHART

INTERNATIONAL EQUITY INDICES

	Last Price	Daily %	YTD %	Δ10D Vol
EuroStoxx 50	3403.71	0.46%	3.44%	0.59%
FTSE 100	7365.26	0.38%	3.11%	-0.57%
CAC 40	5056.34	0.49%	3.99%	0.83%
DAX	12002.47	0.47%	4.54%	0.57%
Swiss SMI	8851.26	0.42%	7.68%	-0.58%
Nikkei 225	19646.24	0.72%	2.78%	1.53%
CSI 300	3819.3	-0.39%	15.38%	0.16%

INTERNATIONAL EQUITY - 30 DAYS CHART


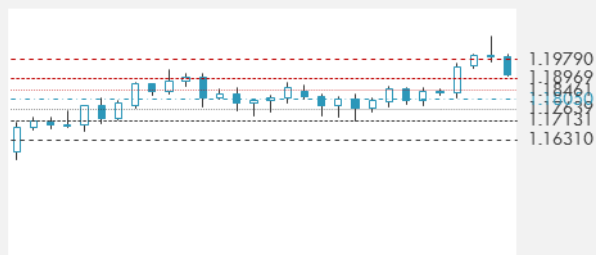
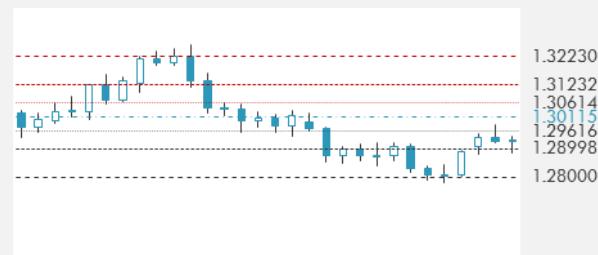
FOREIGN EXCHANGE MARKET

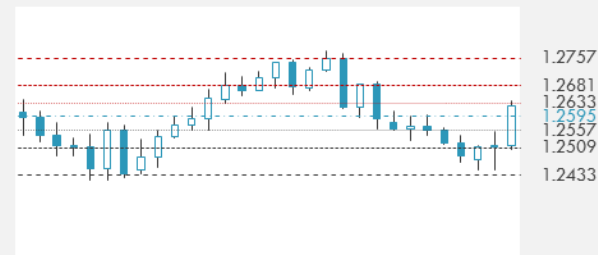
	Last Price	Daily %	Δ10D	Vol 25	ΔRR
Major USD Cross Rate					
USD Index	1157.12	0.14%	-0.19%	-	
EUR/USD	1.1873	-0.09%	0.02%	0.120	
USD/JPY	110.58	0.31%	-0.44%	-0.580	
GBP/USD	1.2917	-0.06%	0.04%	-0.253	
USD/CAD	1.2658	0.29%	-1.28%	0.280	
AUD/USD	0.7893	-0.15%	-0.90%	-0.505	
NZD/USD	0.7156	-0.64%	-0.34%	-0.415	
USD/CHF	0.9643	0.07%	-0.04%	-0.215	
USD/NOK	7.8153	0.07%	-0.62%	0.275	
USD/SEK	7.9879	0.11%	0.17%	-0.130	
USD/CNY	6.5996	0.08%	0.25%	0.085	
Major EUR Cross Rate					
EUR/GBP	0.91914	-0.03%	-0.05%	0.250	
EUR/CHF	1.14492	-0.03%	-0.64%	-0.258	
EUR/JPY	131.28	0.21%	-0.23%	-0.643	

DISTANCE FROM 52 WEEKS LOW/HIGH


- The dollar strengthened for a third day as better-than-expected U.S. economic data fueled speculation the Federal Reserve has more reasons to raise interest rates again.
- CAD falls as greenback extends Tuesday's gains ahead of U.S. GDP data and payrolls estimates; oil falls as inventory concerns linger in aftermath of Harvey.
- Asian emerging currencies were steady and government bonds were mixed as investors wait for U.S. employment data due Friday. China's yuan led this month's gains in regional currencies as the MSCI Emerging-Market Asia Index of stocks headed for an eighth monthly advance.

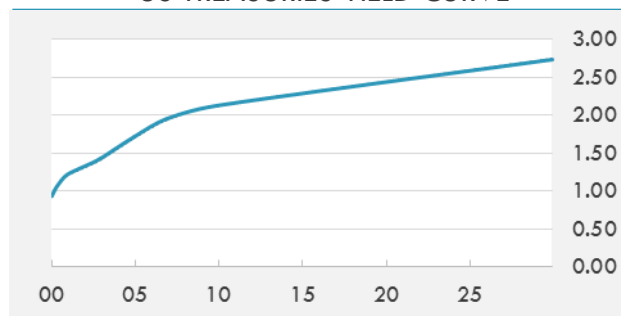
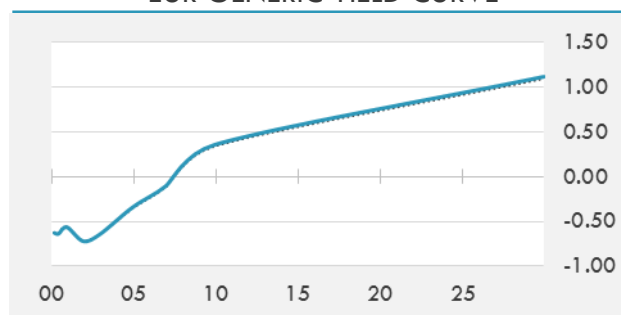
Source: Bloomberg

EUR/USD 30 DAYS SUPPORT & RESISTANCE

GBP/USD 30 DAYS SUPPORT & RESISTANCE

USD/JPY 30 DAYS SUPPORT & RESISTANCE

USD/CAD 30 DAYS SUPPORT & RESISTANCE


GLOBAL BOND INDICES

	Yield	ΔYield (in Bps)
Benchmark Indices		
US 10 Years Benchmark	2.1309	0.002
EU 10 Years Benchmark	0.359	0.017
UK 10 Years Benchmark	1.03	0.030
Sovereign Bonds		
US Treasury Bond	1.778	0.011
Eurozone Sovereign Bond	0.592	0.01
U.K. Sovereign Bond	1.046	0.02
Japan Sovereign Bond	0.091	0.006
USD Emerging Sovereign Bond	4.435	-0.02
Corporate Bonds		
US Investment Grade Bond	3.095	0.005
US High Yield Bond	5.732	-0.02
EUR Investment Grade Bond	0.597	0.013
EUR High Yield Bond	1.993	0.06
USD Emerging Market IG & HY	4.546	-0.009

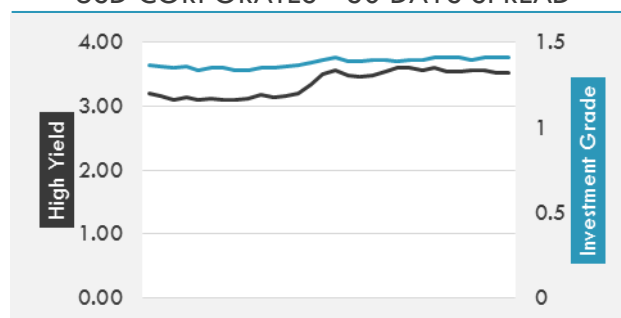
US TREASURIES YIELD CURVE

EUR GENERIC YIELD CURVE


- Rates on September Treasury bills fell by as much as 15-16bp Wednesday, led by the Sept. 7 maturity, as investors squared up accounts for month-end and rolled into mid-September securities to avoid paper vulnerable to debt-ceiling concerns.
- Bund futures called to open little changed, erasing gains from late on Wednesday. Treasuries on the back foot in Asian hours with yields higher by 1-2bps across the curve, with 10y point lagging, after robust China PMI.

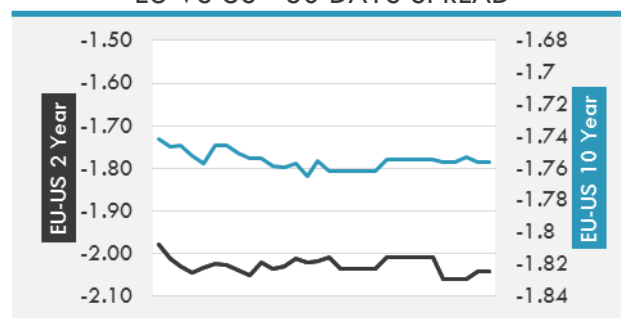
Source: Bloomberg

OVERNIGHT RATES - SWAPS

	Yield	ΔYield (in Bps)
3M USD LIBOR	1.31694	0.0000
3M EUR EURIBOR	-0.33	0.0000
3M GBP LIBOR	0.27838	0.0000
3Y USD SWAP	1.6205	0.0180
5Y USD SWAP	1.7717	0.0131
10Y USD SWAP	2.0789	0.0093
30Y USD SWAP	2.3872	0.0009

USD CORPORATES - 30 DAYS SPREAD

FIXED INCOME SPREADS

	Spread	ΔSpread (in Bps)
USD 3M vs 10Y Spread	1.10685	0.0056
USD 2Y vs 10Y Spread	0.80152	(0.0062)
USD IG Spread	1.41	-
USD HY Spread	3.53	(0.0300)
EU vs US 10Y Spread	-1.7861	(0.0133)
EU vs US 2Y Spread	-2.042	0.0196
EM vs Benchmark Spread	241.3	(2.600)

EU VS US - 30 DAYS SPREAD


GLOBAL COMMODITIES MARKET

	Last Price	Daily %
Commodity Index	83.07	-0.51%

Energy

WTI Crude Future	45.96	-1.03%
Brent Crude Future	50.86	-2.19%
NYMEX Gasoline	188.47	5.69%
NYMEX Heat Oil	167.38	0.50%
ICE Gasoil	494	2.12%
NYMEX Natural Gas	2.939	-1.48%

Precious Metals

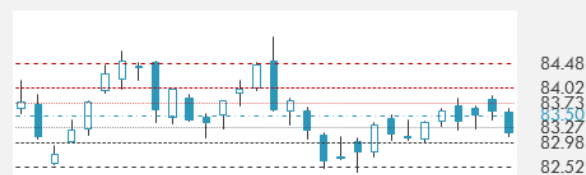
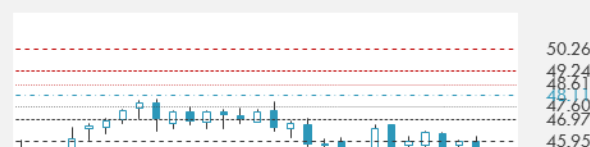
Gold Spot \$/Oz	1308.6	-0.05%
Silver Spot \$/Oz	17.4314	0.29%
Platinum Spot \$/Oz	990.55	-0.49%
Palladium Spot \$/Oz	932.45	-1.27%
Gold Future	1314.1	-0.36%
Silver Future	17.503	-0.07%
Platinum Future	995.2	-0.83%
Palladium Future	931.05	-1.34%

Base Metals

LME Aluminum	2088	-0.36%
LME Copper	6769	-0.33%
LME Zinc	3095	-0.48%
LME Nickel	11585	-1.07%
LME Lead	2370	-0.34%
LME Tin	20600	1.23%

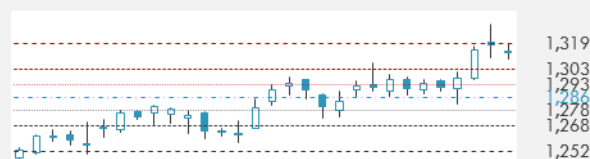
Agricultural

Corn CBT	345.5	-0.93%
Wheat CBT	429.75	0.00%
Soybeans CBT	933.25	-0.43%
Bean Meal CBT	297.4	-0.60%
Rough Rice CBT	12.715	0.87%
MDE Palm Oil	2706	-0.26%
Soybean CBT	34.69	0.12%
Coffee ICE	128.2	-0.35%
Sugar #11 ICE	13.91	0.65%
Cotton #2 ICE	70.85	1.24%
Cocoa ICE	1924	-1.79%
Ethanol CME	1.426	-1.72%
Lumber CME	366.3	1.27%
Orange Juice ICE	130.05	-0.84%
Live Cattle CME	106.125	0.02%
Feeder Cattle CME	144.125	0.42%
Lean Hogs CME	61.35	1.87%

COMMODITY INDEX SUPPORT & RESISTANCE

WTI OIL 30 DAYS SUPPORT & RESISTANCE


- Gold is winning new fans as tepid U.S. inflation anchors Federal Reserve policy and President Donald Trump's growth agenda risks running into the sand.
- Libya's oil production has dropped by 361,000 barrels a day, equal to 35 percent of output last month.

Source: Bloomberg

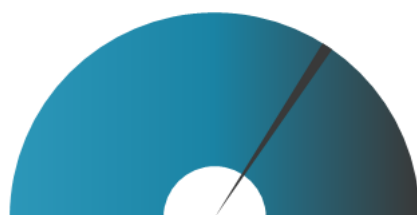
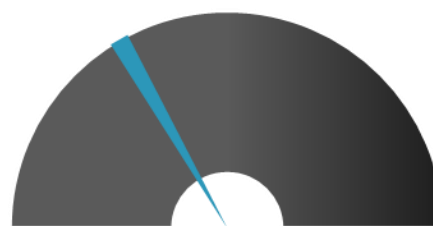
GOLD 30 DAYS SUPPORT & RESISTANCE

SILVER 30 DAYS SUPPORT & RESISTANCE


TOP 10 WINNERS

	Ticker	Last Price	Daily %
S&P 500 Stocks			
VULCAN MATERIALS	VMC	121.86	4.60
CARMAX INC	KMX	65.99	3.82
QORVO INC	QRVO	73.12	3.78
MARRIOTT INTL-A	MAR	103.64	3.40
TEGNA INC	TGNA	12.9	2.79
ELI LILLY & CO	LLY	80.49	2.47
SKYWORKS SOLUTIO	SWKS	103.94	2.38
VERTEX PHARM	VRTX	156.29	2.22
ILLUMINA INC	ILMN	199.74	1.94
HOST HOTELS & RE	HST	18.02	1.92

TOP 10 LOSERS

	Ticker	Last Price	Daily %
S&P 500 Stocks			
FRONTIER COMMUNI	FTR	13.4	-1.11
DISCOVERY COMM-A	DISCA	22.19	-1.16
ANTHEM INC	ANTM	191.5	-1.20
COACH INC	COH	41.2	-1.22
APACHE CORP	APA	38.37	-1.29
BEST BUY CO INC	BBY	54.19	-1.51
DISCOVERY COMM-C	DISCK	20.85	-1.56
ENDO INTERNATIONAL	ENDP	8.55	-1.95
PROGRESSIVE CORP	PGR	46.57	-2.23
FREEMPORT-MCMORAN	FCX	14.56	-4.27

S&P 500 DISTRIBUTION

WINNERS
LOSERS
S&P VOLATILITY INDEX

LOW VOLATILITY
HIGH VOLATILITY

- Bitcoin has been on a tear since it split in two on Aug. 1, resulting in the creation of bitcoin cash.
- UBER is cooperating with a preliminary DOJ investigation into whether its managers broke U.S. laws against bribing foreign officials.
- The iPhone maker's CEO collected company stock worth \$89M last week after hitting a key performance target, according to a regulatory filing.
- Amazon and Microsoft announce that Alexa and Cortana will soon talk to each other. Simply say "Alexa, open Cortana" to an Echo device or "Cortana, open Alexa" to a Windows 10 device. Competitor Sonos is reportedly developing an audio quality focused speaker that also supports multiple voice assistants. Rumors have Amazon developing a new Echo with better audio quality to hold off both Sonos and Apple's HomePod, which launches in December.
- Uber sent an email to employees last night confirming that Dara Khosrowshahi is the new CEO after a unanimous board vote and the ironing out of some contract details.
- Digitimes reports Samsung Electronics hopes to sign multiple contracts with silicon wafer makers to ensure sufficient supplies for memory chip and logic IC manufacturing over the next two years.
- As Tesla fans await the company's semi-trailer truck announcement in September, Cummins has quietly unveiled an electric truck of its own. Dubbed the Urban Hauler Tractor, the concept is a fully electric class 7 truck with a maximum payload of 44,000 pounds, which will enter production around the end of the decade.
- Looking to strengthen its auto business, Siemens has agreed to buy Dutch self-driving software specialist Tass International for an undisclosed sum.

KEY ECONOMIC INDICATORS

Country	Event	Surv(M)	Actual	Prior	Time
Canada	Quarterly GDP Annualized	3.70%	--	3.70%	15:30
Canada	GDP MoM	0.10%	--	0.60%	15:30
China	Manufacturing PMI	51.3	51.7	51.4	4:00
Eurozone	CPI Estimate YoY	1.40%	--	1.30%	12:00
France	CPI YoY	0.90%	--	0.70%	9:45
France	CPI EU Harmonized YoY	1.00%	--	0.80%	9:45
France	CPI MoM	0.50%	--	-0.30%	9:45
Germany	Unemployment Change (000's)	-6k	--	-9k	10:55
Italy	CPI EU Harmonized YoY	1.30%	--	1.20%	12:00
Italy	CPI EU Harmonized MoM	0.00%	--	-1.90%	12:00
Italy	CPI NIC incl. tobacco MoM	0.20%	--	0.10%	12:00
Japan	Industrial Production MoM	-0.30%	-0.80%	2.20%	2:50
Japan	Industrial Production YoY	5.20%	4.70%	5.50%	2:50
Qatar	M1 Money Supply YoY	--	--	0.14%	
Qatar	M2 Money Supply YoY	--	--	7.75%	
United States	Initial Jobless Claims	238k	--	234k	15:30
United States	Personal Income	0.30%	--	0.00%	15:30
United States	Personal Spending	0.40%	--	0.10%	15:30
United States	Chicago Purchasing Manager	58.5	--	58.9	16:45
United States	Pending Home Sales MoM	0.40%	--	1.50%	17:00

Source: Bloomberg

Banque BEMO sal
Head Office - Private and Corporate Banking

 96 Pasteur Building, Pasteur Street, Medawar Area, P.O. Box: 16-6353, Beirut - Lebanon
 Tel: + 961 1 568 250 Fax: + 961 1 568 266

Investment & Research research@bemobank.com

 Beirut Central District Riad El Solh Square, Esseily Building Bloc A, 7th Floor Beirut - Lebanon
 Tel: + 961 1 992 600 Fax: + 961 1 983 368
 www.bemobank.com

Disclaimer:

This report is published for information purposes only. The information herein has been compiled from, or based upon sources considered to be reliable (Bloomberg, SeekingAlpha, DailyStar...), but we do not guarantee or assume responsibility for its completeness and accuracy. This document should not be construed as a solicitation to take part in any investment, or as constituting any representation or warranty on our part. This report is not to be relied upon in substitution for the exercise of specialists.

We may not have taken any steps to ensure that the securities referred to in this report are suitable for any particular investor. The investments and services contained or referred to herein are not purported to be exhaustive, any person considering an investment should seek specialist advice on the suitability of an investment.

Nothing in this report constitutes investment, legal, accounting or tax advice, or a representation that any investment or strategy is suitable or appropriate to your individual circumstances, or otherwise constitutes a personal recommendation. Clients understand that it is their responsibility to seek legal and/or tax advice regarding the legal and tax consequences of their investment transactions. The consequences of any action taken on the basis of information contained herein are solely the responsibility of the recipient.

Investment instruments are subject to risk, including possible loss of principal amount invested. Past performance should not be taken as an indication or guarantee of future performance, and no representation or warranty, express or implied, is made regarding future performance. The value of securities and financial instruments is subject to exchange rate fluctuation that may have a positive or adverse effect on the price or income of such securities or financial instruments. Some investments mentioned in this report may have a high level of volatility. High volatility investments may experience sudden and large falls in their value causing losses when that investment is realized. Some investments may not be readily realizable and it may be difficult to sell or realize those investments, similarly it may prove difficult to obtain reliable information about the value, or risks, to which such an investment is exposed.

This report may provide the addresses of websites or references. We have not reviewed any such site and takes no responsibility for the content contained therein. Such address or reference is provided solely for convenience and information. Accessing such website through this report shall be at the recipients own risk.