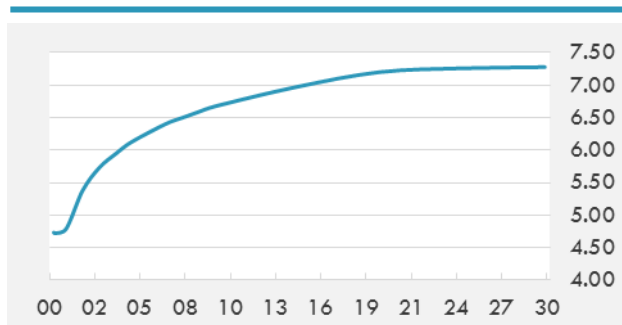


BEIRUT STOCK EXCHANGE

	Last	Daily %	YTD %	Dividend %
Development and Reconstruction				
Solidere A	7.99	3.10%	-23.03%	1.24%
Solidere B	7.74	0.00%	-26.29%	1.28%
Solidere GDR	7.6	0.00%	-24.00%	1.30%
Banking				
Audi Listed	6.04	0.00%	-11.18%	8.25%
BLC Listed	0.99	0.00%	0.00%	0.00%
BOB Listed	18.8	0.00%	0.00%	3.52%
Byblos Listed	1.63	-0.61%	-4.12%	8.12%
BEMO Listed	1.64	0.00%	-3.53%	3.27%
BLOM Listed	11.3	0.44%	6.60%	8.76%
Trading				
RYMCO	3.25	0.00%	0.00%	-
Industrial				
Holcim	11.7	0.43%	-0.43%	20.40%
Ciments Blancs	1.62	0.00%	3.18%	0.00%

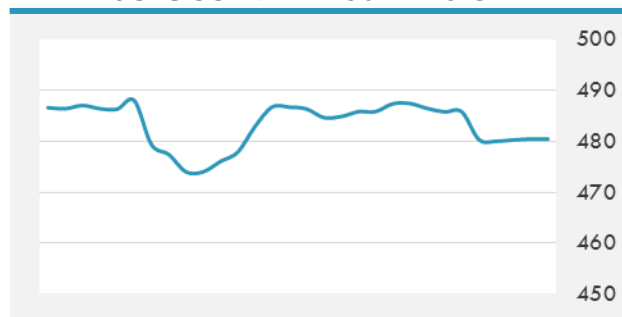
MSCI LEBANON INDEX - 30 DAYS CHART

LEBANESE USD SOVEREIGN CURVE


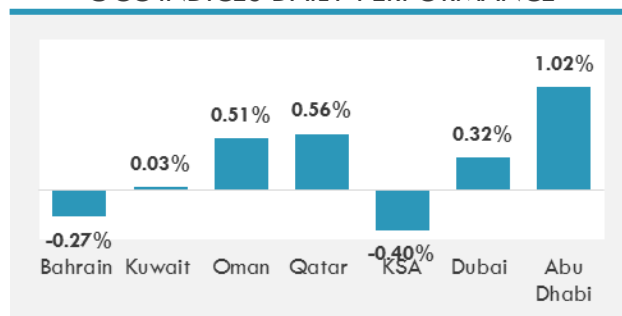
- A Kuwait-based company has decided to close two of its TSC supermarkets in Lebanon as part of restructuring efforts, but will keep and bolster the remaining five.
- A leading banker warned Thursday against “moral hazards” if the government continues to burden the Central Bank with all the economic and financial problems facing the country. “Moral hazards would result when the government decides not to bear its full responsibilities, hoping that the Central Bank works continuously on repairing monetary and financial issues in the country,” BLOM Bank Chair Saad Azhari said.

GCC EQUITY INDICES

	Last Price	Daily %	YTD %
Bahrain	1322.58	-0.27%	8.37%
Kuwait	6825.7	0.03%	18.75%
Oman	5074.39	0.51%	-12.54%
Qatar	9360.59	0.56%	-9.95%
KSA	7080.87	-0.40%	-1.73%
Dubai	3660.94	0.32%	4.09%
Abu Dhabi	4608.29	1.02%	1.09%

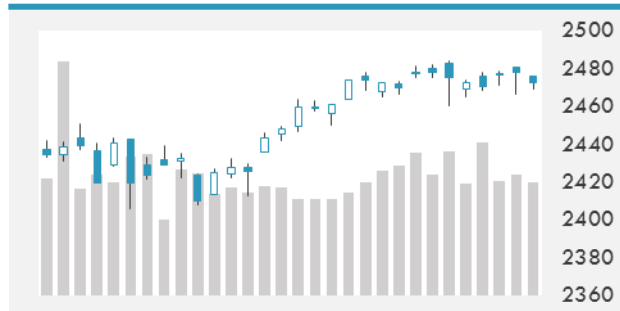
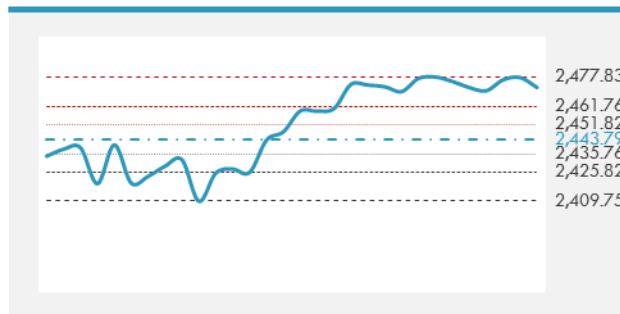
MSCI GCC INDEX - 30 DAYS CHART

LOCAL/GCC FOREIGN EXCHANGE

	Cross	Last Price
Lebanese Pound Spot	USD/LBP	1514.25
Bahraini Dinar Spot	USD/BHD	0.37716
Kuwaiti Dinar Spot	USD/KWD	0.30171
Omani Rial Spot	USD/OMR	0.38498
Qatari Riyal Spot	USD/QAR	3.666
Saudi Riyal Spot	USD/SAR	3.7502
UAE Dirham Spot	USD/AED	3.673

GCC INDICES DAILY PERFORMANCE


UNITED STATES EQUITY MARKET INDICES

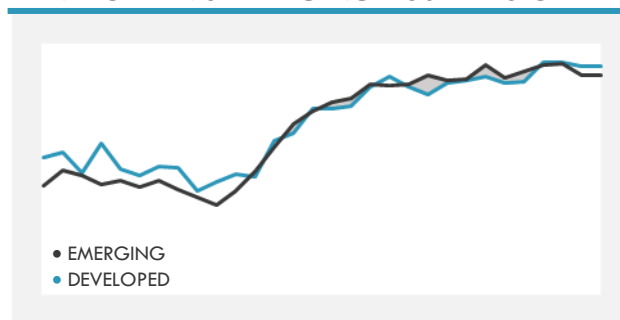
	Last Price	Daily %	YTD %	Δ10D Vol
Major Indices				
Dow Jones	22026.1	0.04%	11.45%	-0.40%
S&P 500	2472.16	-0.22%	10.42%	0.30%
Nasdaq	6340.341	-0.35%	17.78%	0.26%
Sectors Indices				
Discretionary	724.15	-0.30%	11.78%	0.18%
Staples	567.21	-0.15%	6.66%	-0.06%
Energy	481.77	-1.34%	-13.12%	1.58%
Financials	417.86	-0.46%	8.10%	0.61%
Healthcare	920.6	0.17%	15.52%	0.32%
Industrials	587.03	0.47%	9.10%	0.70%
IT	986.91	-0.35%	22.15%	0.20%
Materials	340.36	-0.72%	9.03%	0.52%
Telecom	160.31	0.09%	-9.23%	-0.04%
Utilities	273.78	0.42%	10.92%	-0.51%
Real Estate	200.59	-0.26%	5.45%	0.13%

S&P 500 INDEX - 30 DAYS CHART

S&P 500 SUPPORT & RESISTANCE


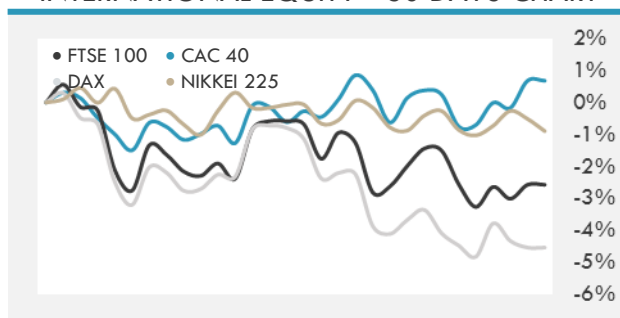
- U.S. equities extended losses, dropping to the lowest level of the day, after the Wall Street Journal reported special counsel Robert Mueller will impanel a grand jury in his probe on Russia's involvement in the U.S. election.
- Asian stocks were mixed as investors weighed the latest development in the ongoing probe of U.S. President Donald Trump's ties to Russia ahead of the release of jobs data.
- European stocks held steady as earnings-related gains in companies including Next Plc and UniCredit SpA offset losses in energy firms.

INTERNATIONAL MARKETS INDICES

	Last Price	Daily %	YTD %	Δ10D Vol
World	1171.04	-0.13%	13.58%	-0.13%
Developed	1968.72	-0.08%	12.42%	-0.28%
Emerging	1064.07	-0.55%	23.40%	1.04%
Frontier	2744.53	0.16%	13.49%	-0.24%
Europe	127.93	0.10%	4.44%	-1.54%
Latin America	2779.74	-0.02%	18.76%	0.07%
Asia Pacific	160.91	-0.30%	19.15%	0.45%

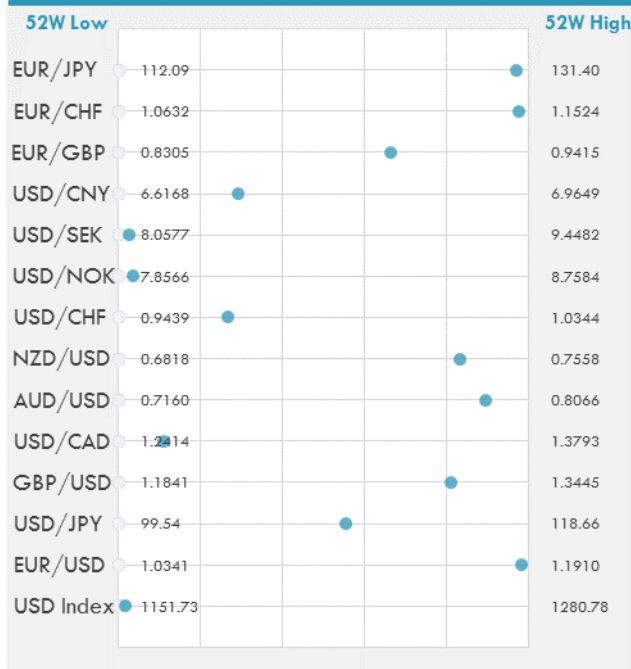
DEVELOPED VS EMERGING - 30 DAYS CHART

INTERNATIONAL EQUITY INDICES

	Last Price	Daily %	YTD %	Δ10D Vol
EuroStoxx 50	3466.37	0.20%	5.34%	-2.75%
FTSE 100	7474.77	0.85%	4.65%	0.92%
CAC 40	5130.49	0.46%	5.52%	-2.72%
DAX	12154.72	-0.22%	5.87%	-3.36%
Swiss SMI	9136.61	0.15%	11.15%	-0.01%
Nikkei 225	19952.33	-0.38%	4.38%	0.03%
CSI 300	3725.64	-0.06%	12.55%	0.98%

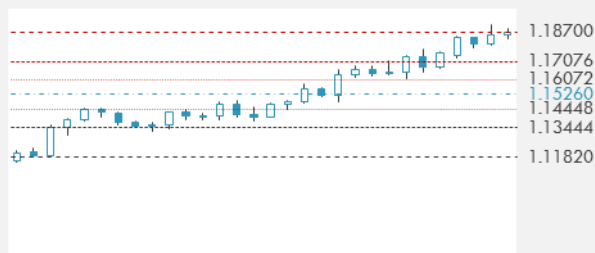
INTERNATIONAL EQUITY - 30 DAYS CHART


FOREIGN EXCHANGE MARKET

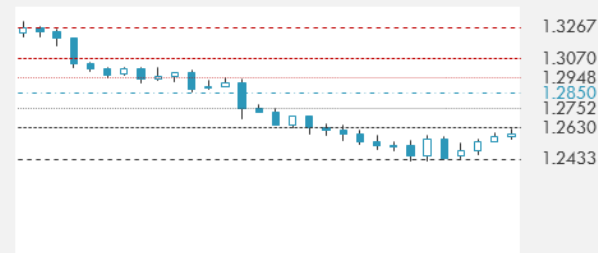
	Last Price	Daily %	Δ10D	Vol 25	ΔRR
Major USD Cross Rate					
USD Index	1153.88	-0.05%	-0.03%	-	
EUR/USD	1.1881	0.09%	-0.30%	0.315	
USD/JPY	110.1	0.05%	0.04%	-0.883	
GBP/USD	1.3142	0.03%	-0.02%	0.010	
USD/CAD	1.2568	-0.14%	-0.07%	0.280	
AUD/USD	0.7971	0.26%	0.10%	-0.290	
NZD/USD	0.7433	-0.03%	-0.05%	-0.295	
USD/CHF	0.9679	-0.07%	0.12%	0.335	
USD/NOK	7.8893	-0.20%	0.00%	0.130	
USD/SEK	8.0926	-0.11%	-0.03%	-0.105	
USD/CNY	6.7184	0.02%	-0.20%	0.230	
Major EUR Cross Rate					
EUR/GBP	0.90404	0.06%	-0.91%	0.185	
EUR/CHF	1.14998	0.02%	-0.30%	1.330	
EUR/JPY	130.81	0.15%	-0.20%	-0.293	

DISTANCE FROM 52 WEEKS LOW/HIGH


- The dollar fell to a seven-week low against the yen before a U.S. government report forecast to show employers slowed their pace of hiring in July.
- Pound and gilt traders have been wrong-footed repeatedly by the Bank of England's inflation reports this year, with investors being surprised by policy makers being more dovish than expected.
- Where there is smoke there is often fire. Bets on a stronger yuan are rising with more chatter from Chinese policy makers about expanding the currency's trading flexibility.

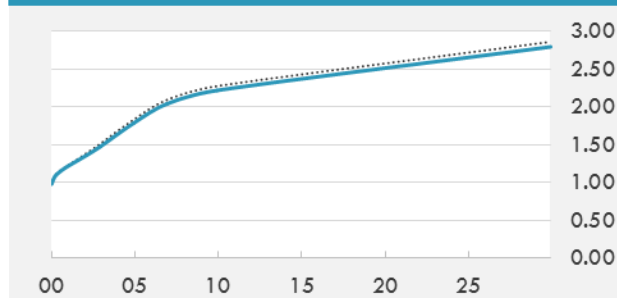
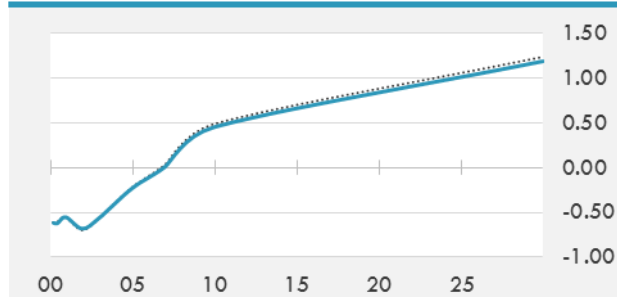
EUR/USD 30 DAYS SUPPORT & RESISTANCE

GBP/USD 30 DAYS SUPPORT & RESISTANCE

USD/JPY 30 DAYS SUPPORT & RESISTANCE

USD/CAD 30 DAYS SUPPORT & RESISTANCE


GLOBAL BOND INDICES

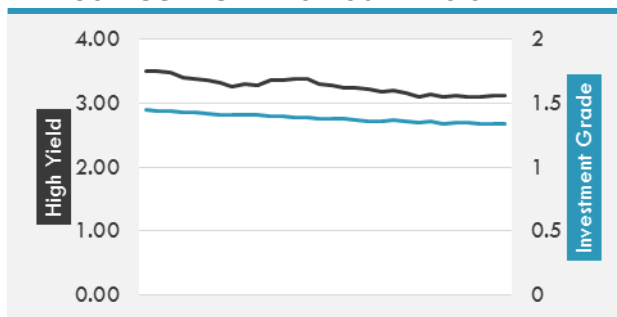
	Yield	ΔYield (in Bps)
Benchmark Indices		
US 10 Years Benchmark	2.2212	-0.050
EU 10 Years Benchmark	0.453	-0.033
UK 10 Years Benchmark	1.149	-0.087
Sovereign Bonds		
US Treasury Bond	1.831	-0.027
Eurozone Sovereign Bond	0.617	-0.01
U.K. Sovereign Bond	1.127	-0.071
Japan Sovereign Bond	0.141	-0.005
USD Emerging Sovereign Bond	4.555	-0.03
Corporate Bonds		
US Investment Grade Bond	3.096	-0.022
US High Yield Bond	5.548	0.02
EUR Investment Grade Bond	0.634	-0.009
EUR High Yield Bond	1.785	-0.096
USD Emerging Market IG & HY	4.612	-0.038

US TREASURIES YIELD CURVE

EUR GENERIC YIELD CURVE


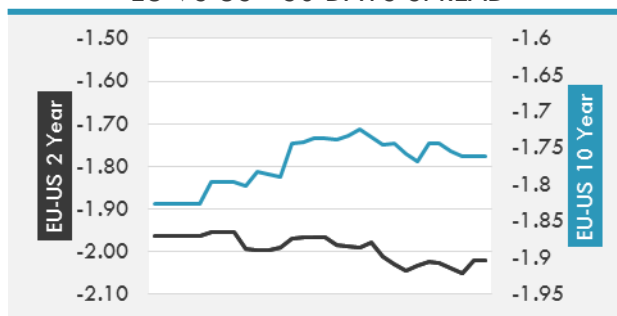
- Afternoon gains spurred by second block trade in ultra-long bond futures saw Treasuries end session on highs, led by long-end of the curve; late gains aided by Wall Street Journal report on Russia probe; mix of other factors including weaker dollar from soft data, strong gilt rally post-BOE, and more block trades in 10Y, ultra-long futures underpinned over the session.
- Bund downside skew may richen ahead of the next major event risk -- Jackson Hole and ECB meeting on September.

OVERNIGHT RATES - SWAPS

	Yield	ΔYield (in Bps)
3M USD LIBOR	1.31278	0.0000
3M EUR EURIBOR	-0.331	0.0000
3M GBP LIBOR	0.28806	0.0000
3Y USD SWAP	1.6899	-0.0233
5Y USD SWAP	1.8651	-0.0347
10Y USD SWAP	2.1935	-0.0410
30Y USD SWAP	2.4886	-0.0444

USD CORPORATES - 30 DAYS SPREAD

FIXED INCOME SPREADS

	Spread	ΔSpread (in Bps)
USD 3M vs 10Y Spread	1.13725	(0.0612)
USD 2Y vs 10Y Spread	0.87817	(0.0298)
USD IG Spread	1.35	0.0100
USD HY Spread	3.18	0.0600
EU vs US 10Y Spread	-1.7774	0.0004
EU vs US 2Y Spread	-2.022	0.0284
EM vs Benchmark Spread	243.5	(0.800)

EU VS US - 30 DAYS SPREAD


GLOBAL COMMODITIES MARKET

	Last Price	Daily %
Commodity Index	83.33	-0.71%

Energy

WTI Crude Future	49.03	-1.13%
Brent Crude Future	52.01	-0.67%
NYMEX Gasoline	163.19	-0.78%
NYMEX Heat Oil	163.89	-1.20%
ICE Gasoil	492	0.77%
NYMEX Natural Gas	2.8	-0.39%

Precious Metals

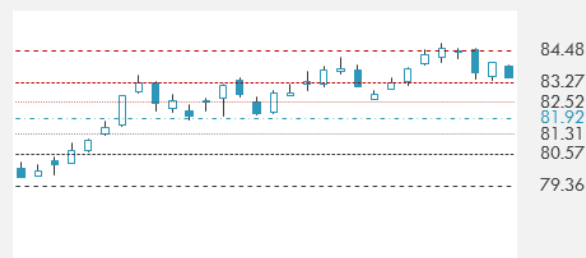
Gold Spot \$/Oz	1268.6	0.15%
Silver Spot \$/Oz	16.6589	0.45%
Platinum Spot \$/Oz	964.1	1.75%
Palladium Spot \$/Oz	885.95	-1.09%
Gold Future	1274.4	-0.31%
Silver Future	16.63	-0.62%
Platinum Future	964.6	1.13%
Palladium Future	881	-1.26%

Base Metals

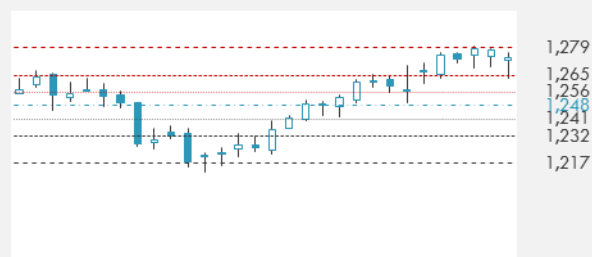
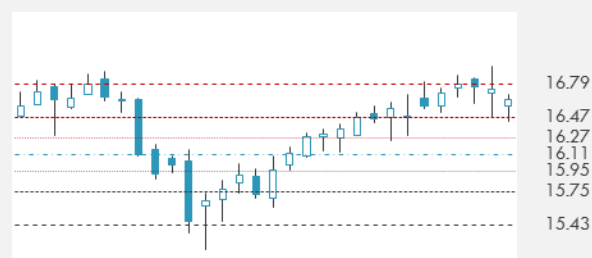
LME Aluminum	1916	-0.52%
LME Copper	6352	0.00%
LME Zinc	2792	-0.34%
LME Nickel	10380	0.29%
LME Lead	2367	0.59%
LME Tin	20650	0.29%

Agricultural

Corn CBT	377.75	-0.33%
Wheat CBT	457.75	-0.65%
Soybeans CBT	960.5	-1.74%
Bean Meal CBT	312.6	-0.92%
Rough Rice CBT	12.385	-0.84%
MDE Palm Oil	2604	-1.44%
Soybean CBT	33.8	-2.23%
Coffee ICE	140.2	-0.11%
Sugar #11 ICE	14.31	-3.25%
Cotton #2 ICE	70.16	-0.26%
Cocoa ICE	2086	0.19%
Ethanol CME	1.553	-0.38%
Lumber CME	383.8	-0.23%
Orange Juice ICE	133.3	-0.45%
Live Cattle CME	114.825	0.13%
Feeder Cattle CME	151.2	0.40%
Lean Hogs CME	65.5	-1.09%

COMMODITY INDEX SUPPORT & RESISTANCE

WTI OIL 30 DAYS SUPPORT & RESISTANCE


- Oil is back down again this week following the year's biggest rally as investor focus shifted to rising output from the U.S. and OPEC.
- Gold little changed as investors await clues on outlook for U.S. interest rates in jobs data Friday.

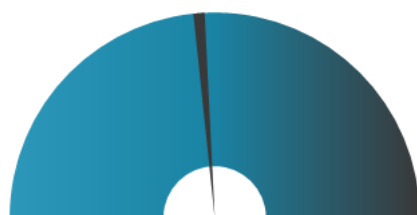
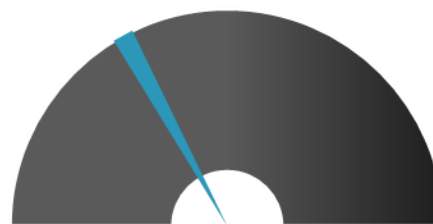
GOLD 30 DAYS SUPPORT & RESISTANCE

SILVER 30 DAYS SUPPORT & RESISTANCE


TOP 10 WINNERS

	Ticker	Last Price	Daily %
S&P 500 Stocks			
STERICYCLE INC	SRCL	82.76	8.87
TRANSOCEAN LTD	RIG	9.25	7.18
CF INDUSTRIES HO	CF	30.71	6.93
ROCKWELL COLLINS	COL	118.44	5.41
KELLOGG CO	K	70.36	4.33
QUANTA SERVICES	PWR	35.7	4.32
CINCINNATI FIN	CINF	80.52	4.30
ACTIVISION BLIZZ	ATVI	63.97	4.10
MARATHON OIL	MRO	12.51	3.90
CA INC	CA	31.85	3.24

TOP 10 LOSERS

	Ticker	Last Price	Daily %
S&P 500 Stocks			
ENDO INTERNATIONAL	ENDP	9.91	-5.98
MYLAN NV	MYL	34.7	-6.01
L BRANDS INC	LB	41.6	-6.12
PIONEER NATURAL	PXD	135.12	-7.25
NOBLE ENERGY INC	NBL	25.89	-7.67
APACHE CORP	APA	44.06	-8.04
HOLOGIC INC	HOLX	39.91	-8.61
CONCHO RESOURCES	CXO	117.46	-8.71
AMERISOURCEBERGE	ABC	81.71	-10.47
FRONTIER COMMUNI	FTR	14.54	-14.72

S&P 500 DISTRIBUTION

WINNERS
LOSERS
S&P VOLATILITY INDEX

LOW VOLATILITY
HIGH VOLATILITY

- BWXT Nuclear Energy, a subsidiary of BWX Technologies, has been awarded an \$18.8M contract from NASA to initiate conceptual designs for a nuclear thermal propulsion reactor in support of a possible future manned mission to Mars.
- Apple's leaked HomePod firmware hints that this year's iPhone will include facial recognition technology into Apple Pay, according to Apple Insider. Facial recognition wouldn't replace touch identification completely but could speed up the checkout process and inspire more people to try the mobile wallet.
- Uber's service for independent truckers has spread to new markets with additional features.
- FedEx announces holiday surcharges for oversize items and packages that need extra handling for a period from November 20 to December 24. FedEx Express and FedEx Ground in the U.S. and Canada will increase the surcharge for additional handling by \$3 per package, for oversize goods by \$25 per package and for unauthorized shipments by \$300 per package.
- Toshiba and Western Digital comment on the potential partnership on the Fab 6 memory chip production line.
- Doubters are going to doubt and believers are going to believe. Here's the latest on Tesla from the sell-side. Baird: "Q2 results were better than we feared when we previewed the quarter. Importantly, cash balance, demand commentary for all vehicles, and Model 3 margin ramp expectations were positive. Although TSLA is now in 'production hell,' we recommend investors own shares into the Model 3 ramp...We believe a positive reception to the Model 3 from early customers could significantly increase the value of the Tesla brand and further accelerate demand."

KEY ECONOMIC INDICATORS

Country	Event	Surv(M)	Actual	Prior	Time
Canada	Full Time Employment Change	--	--	8.1	15:30
Canada	Participation Rate	--	--	65.9	15:30
Eurozone	Markit Eurozone Retail PMI	--	--	53.2	11:10
France	Markit France Retail PMI	--	--	56.3	11:10
Germany	Markit Germany Construction PMI	--	--	55.1	10:30
Germany	Markit Germany Retail PMI	--	--	54.5	11:10
Japan	Labor Cash Earnings YoY	0.50%	-0.40%	0.70%	3:00
United Kingdom	New Car Registrations YoY	--	--	-4.80%	11:00
United States	Change in Nonfarm Payrolls	180k	--	222k	15:30
United States	Unemployment Rate	4.30%	--	4.40%	15:30
United States	Trade Balance	-\$44.5b	--	-\$46.5b	15:30
United States	Change in Manufact. Payrolls	5k	--	1k	15:30
United States	Baker Hughes U.S. Rig Count	--	--	958	20:00
United States	Change in Private Payrolls	180k	--	187k	15:30
United States	Average Hourly Earnings MoM	0.30%	--	0.20%	15:30
United States	Average Hourly Earnings YoY	2.40%	--	2.50%	15:30
United States	Average Weekly Hours All Employees	34.5	--	34.5	15:30
United States	Underemployment Rate	--	--	8.60%	15:30
United States	Labor Force Participation Rate	--	--	62.80%	15:30
United States	Two-Month Payroll Net Revision	--	--	--	15:30

Banque BEMO sal
Head Office - Private and Corporate Banking

96 Pasteur Building, Pasteur Street, Medawar Area, P.O. Box: 16-6353, Beirut - Lebanon
 Tel: + 961 1 568 250 Fax: + 961 1 568 266

Investment & Research research@bemobank.com

Beirut Central District Riad El Solh Square, Esseily Building Bloc A, 7th Floor Beirut - Lebanon
 Tel: + 961 1 992 600 Fax: + 961 1 983 368
www.bemobank.com

Disclaimer:

This report is published for information purposes only. The information herein has been compiled from, or based upon sources considered to be reliable (Bloomberg, SeekingAlpha, DailyStar...), but we do not guarantee or assume responsibility for its completeness and accuracy. This document should not be construed as a solicitation to take part in any investment, or as constituting any representation or warranty on our part. This report is not to be relied upon in substitution for the exercise of specialists.

We may not have taken any steps to ensure that the securities referred to in this report are suitable for any particular investor. The investments and services contained or referred to herein are not purported to be exhaustive, any person considering an investment should seek specialist advice on the suitability of an investment.

Nothing in this report constitutes investment, legal, accounting or tax advice, or a representation that any investment or strategy is suitable or appropriate to your individual circumstances, or otherwise constitutes a personal recommendation. Clients understand that it is their responsibility to seek legal and/or tax advice regarding the legal and tax consequences of their investment transactions. The consequences of any action taken on the basis of information contained herein are solely the responsibility of the recipient.

Investment instruments are subject to risk, including possible loss of principal amount invested. Past performance should not be taken as an indication or guarantee of future performance, and no representation or warranty, express or implied, is made regarding future performance. The value of securities and financial instruments is subject to exchange rate fluctuation that may have a positive or adverse effect on the price or income of such securities or financial instruments. Some investments mentioned in this report may have a high level of volatility. High volatility investments may experience sudden and large falls in their value causing losses when that investment is realized. Some investments may not be readily realizable and it may be difficult to sell or realize those investments, similarly it may prove difficult to obtain reliable information about the value, or risks, to which such an investment is exposed.

This report may provide the addresses of websites or references. We have not reviewed any such site and takes no responsibility for the content contained therein. Such address or reference is provided solely for convenience and information. Accessing such website through this report shall be at the recipients own risk.