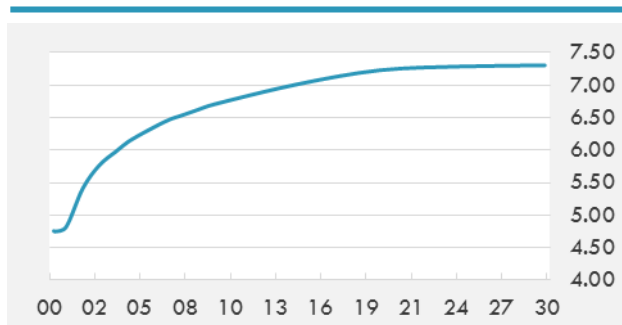


BEIRUT STOCK EXCHANGE

	Last	Daily %	YTD %	Dividend %
Development and Reconstruction				
Solidere A	7.99	0.00%	-23.03%	1.27%
Solidere B	7.98	3.10%	-24.00%	1.27%
Solidere GDR	7.6	0.00%	-24.00%	1.30%
Banking				
Audi Listed	6.04	0.00%	-11.18%	8.31%
BLC Listed	0.99	0.00%	0.00%	0.00%
BOB Listed	18.8	0.00%	0.00%	3.52%
Byblos Listed	1.63	0.00%	-4.12%	8.22%
BEMO Listed	1.64	0.00%	-3.53%	3.27%
BLOM Listed	11.3	0.00%	6.60%	8.76%
Trading				
RYMCO	3.25	0.00%	0.00%	-
Industrial				
Holcim	11.7	0.00%	-0.43%	20.40%
Ciments Blancs	1.62	0.00%	3.18%	0.00%

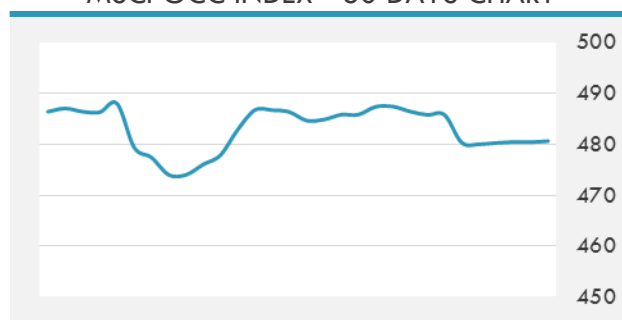
MSCI LEBANON INDEX - 30 DAYS CHART

LEBANESE USD SOVEREIGN CURVE


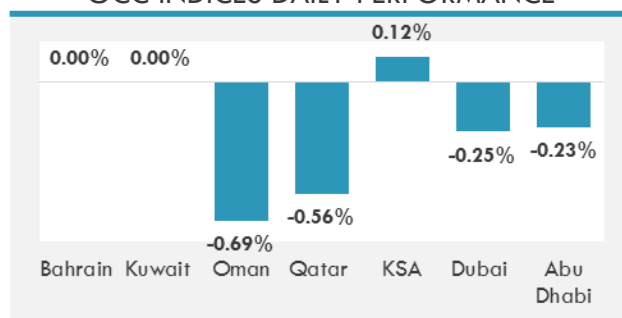
- Lebanese commercial banks deposited around \$2.5 billion in both dollar and Lebanese pound currency in Banque Du Liban for 10 years with an average interest rate between 6 and 7 percent to beef up BDL's foreign currency reserves, bankers said Friday.
- Lebanon's Agriculture Minister Ghazi Zeaiter initialed Friday an agreement to improve the quality of Lebanon's olive oil production chain with the International Center for Advanced Mediterranean Agronomic Studies (CIHEAM) Bari.

GCC EQUITY INDICES

	Last Price	Daily %	YTD %
Bahrain	1322.58	0.00%	8.19%
Kuwait	6825.7	0.00%	18.58%
Oman	5022.43	-0.69%	-13.02%
Qatar	9345.37	-0.56%	-10.32%
KSA	7094.28	0.12%	-1.61%
Dubai	3665.94	-0.25%	3.84%
Abu Dhabi	4585.51	-0.23%	0.53%

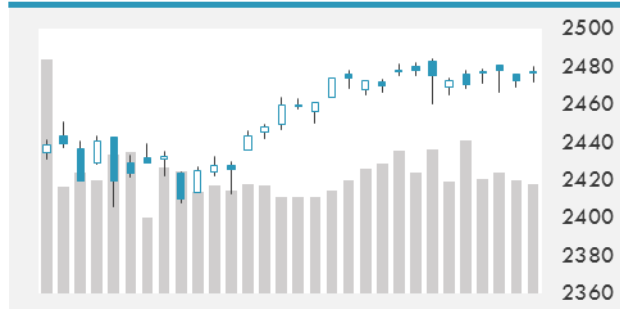
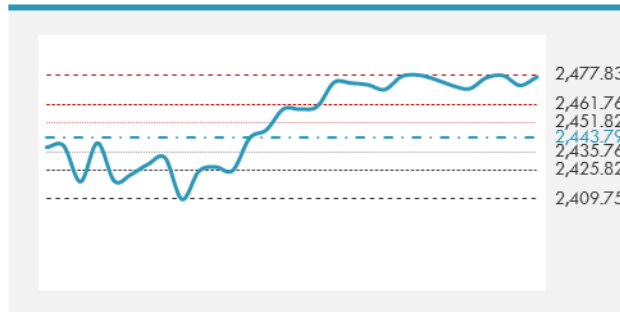
MSCI GCC INDEX - 30 DAYS CHART

LOCAL/GCC FOREIGN EXCHANGE

	Cross	Last Price
Lebanese Pound Spot	USD/LBP	1506.5
Bahraini Dinar Spot	USD/BHD	0.3772
Kuwaiti Dinar Spot	USD/KWD	0.302
Omani Rial Spot	USD/OMR	0.385
Qatari Riyal Spot	USD/QAR	3.66
Saudi Riyal Spot	USD/SAR	3.7503
UAE Dirham Spot	USD/AED	3.673

GCC INDICES DAILY PERFORMANCE


UNITED STATES EQUITY MARKET INDICES

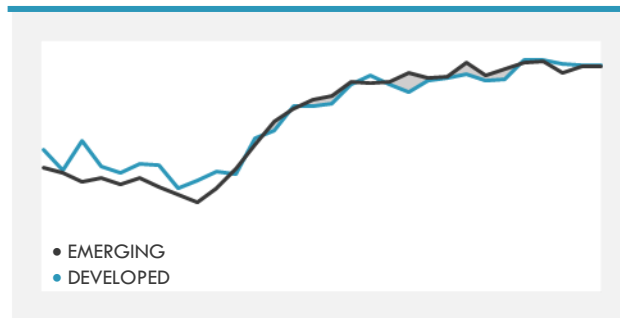
	Last Price	Daily %	YTD %	Δ10D Vol
Major Indices				
Dow Jones	22092.81	0.30%	11.79%	-1.72%
S&P 500	2476.83	0.19%	10.63%	0.09%
Nasdaq	6351.564	0.18%	17.99%	-0.43%
Sectors Indices				
Discretionary	724.33	0.02%	11.81%	-0.31%
Staples	566.14	-0.19%	6.46%	-0.19%
Energy	483.44	0.35%	-12.82%	-0.11%
Financials	420.88	0.72%	8.89%	0.41%
Healthcare	918.6	-0.22%	15.27%	-0.02%
Industrials	588.4	0.23%	9.35%	-0.39%
IT	989.57	0.27%	22.48%	0.02%
Materials	342.01	0.48%	9.56%	0.66%
Telecom	161.07	0.47%	-8.80%	-1.59%
Utilities	272.98	-0.29%	10.59%	-2.02%
Real Estate	201.11	0.26%	5.72%	0.05%

S&P 500 INDEX - 30 DAYS CHART

S&P 500 SUPPORT & RESISTANCE


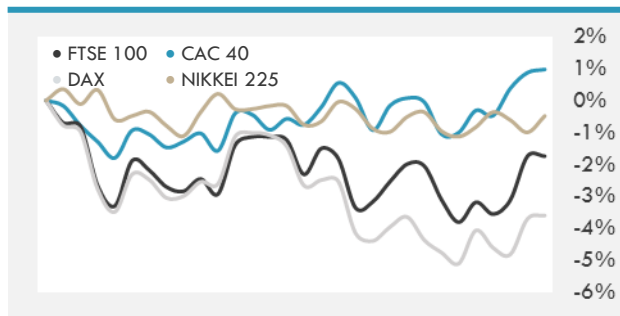
- Asian equities rose, with the benchmark gauge closing in on a 10-year high touched last week, after a report on U.S. hiring boosted confidence in the global economic outlook.
- Equity markets in the U.S. advanced Friday after a July payrolls figure that beat Wall Street forecasts.
- European stocks advanced, getting a push from a declining euro after data showed the U.S. created more jobs than forecast in July.

INTERNATIONAL MARKETS INDICES

	Last Price	Daily %	YTD %	Δ10D Vol
World	1170.95	-0.01%	13.57%	-0.16%
Developed	1967.77	-0.05%	12.37%	-0.29%
Emerging	1067.26	0.30%	23.77%	-0.13%
Frontier	2748.16	0.13%	13.64%	-0.05%
Europe	129.17	0.97%	5.45%	1.39%
Latin America	2778.49	-0.04%	18.71%	-0.05%
Asia Pacific	160.41	-0.31%	18.78%	0.34%

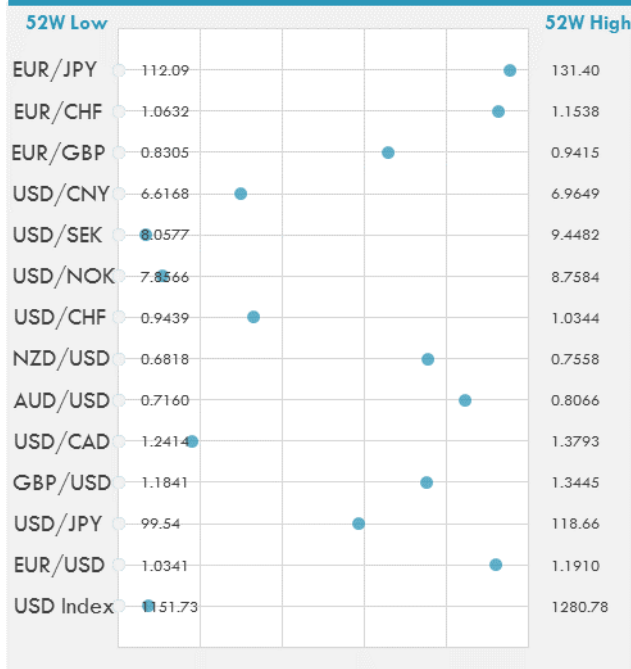
DEVELOPED VS EMERGING - 30 DAYS CHART

INTERNATIONAL EQUITY INDICES

	Last Price	Daily %	YTD %	Δ10D Vol
EuroStoxx 50	3507.41	1.18%	6.59%	1.89%
FTSE 100	7511.71	0.49%	5.16%	-1.77%
CAC 40	5203.44	1.42%	7.02%	2.44%
DAX	12297.72	1.18%	7.11%	2.02%
Swiss SMI	9176.99	0.44%	11.64%	-3.11%
Nikkei 225	20055.89	0.52%	4.93%	-0.56%
CSI 300	3726.88	0.52%	12.59%	0.06%

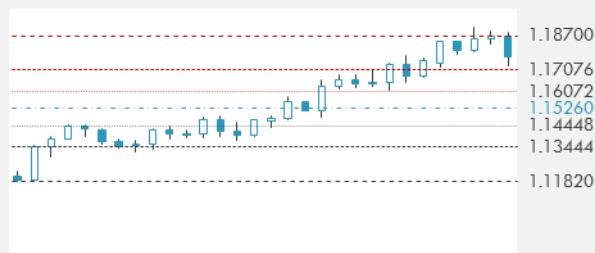
INTERNATIONAL EQUITY - 30 DAYS CHART


FOREIGN EXCHANGE MARKET

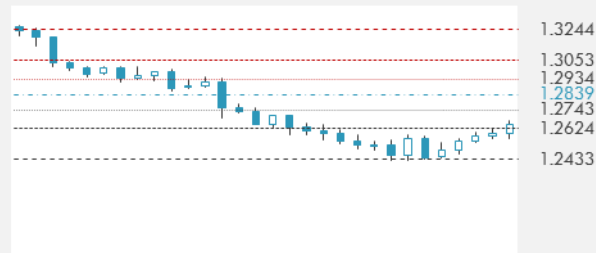
	Last Price	Daily %	Δ10D	Vol 25	ΔRR
Major USD Cross Rate					
USD Index	1161.27	0.05%	-0.13%	-	
EUR/USD	1.1782	0.08%	0.00%	0.255	
USD/JPY	110.74	0.05%	-1.28%	-0.755	
GBP/USD	1.3044	0.03%	-0.01%	0.008	
USD/CAD	1.2661	0.13%	-0.04%	0.313	
AUD/USD	0.7925	0.04%	-0.06%	-0.333	
NZD/USD	0.7375	-0.46%	0.17%	-0.348	
USD/CHF	0.9736	0.09%	-0.21%	0.338	
USD/NOK	7.9520	0.10%	-0.16%	0.243	
USD/SEK	8.1500	0.05%	0.03%	-0.073	
USD/CNY	6.7206	-0.12%	0.04%	0.080	
Major EUR Cross Rate					
EUR/GBP	0.90329	0.07%	0.00%	0.163	
EUR/CHF	1.14714	0.16%	-0.05%	1.073	
EUR/JPY	130.48	0.13%	-1.06%	-0.310	

DISTANCE FROM 52 WEEKS LOW/HIGH


- The dollar stalled after Friday's rally as traders await inflation data following a strong jobs report.
- Yen weakens after stronger-than-estimated U.S. jobs data kept expectations of a Fed rate increase this year. A decline in Treasuries is likely to weigh on domestic bonds as there is no scheduled debt purchase by Bank of Japan Monday.

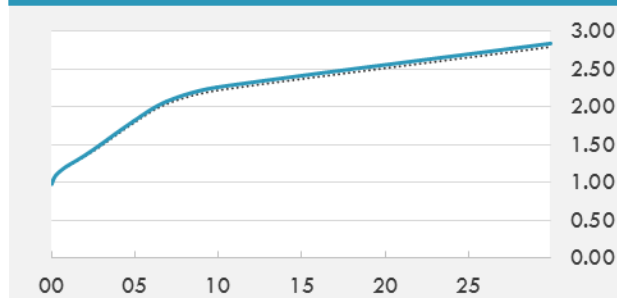
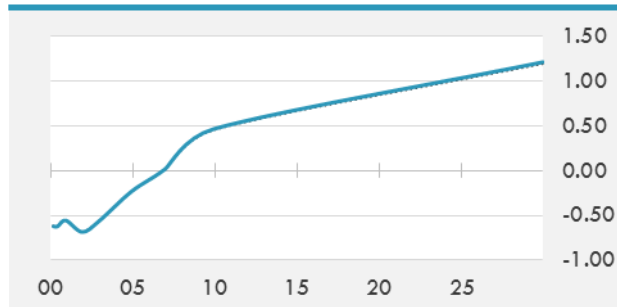
EUR/USD 30 DAYS SUPPORT & RESISTANCE

GBP/USD 30 DAYS SUPPORT & RESISTANCE

USD/JPY 30 DAYS SUPPORT & RESISTANCE

USD/CAD 30 DAYS SUPPORT & RESISTANCE


GLOBAL BOND INDICES

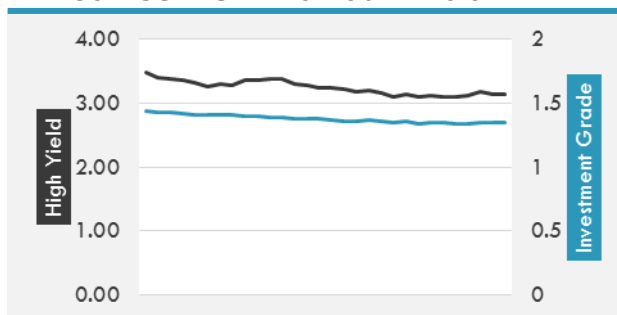
	Yield	ΔYield (in Bps)
Benchmark Indices		
US 10 Years Benchmark	2.262	0.041
EU 10 Years Benchmark	0.468	0.015
UK 10 Years Benchmark	1.176	0.027
Sovereign Bonds		
US Treasury Bond	1.859	0.028
Eurozone Sovereign Bond	0.632	0.015
U.K. Sovereign Bond	1.157	0.03
Japan Sovereign Bond	0.143	0.002
USD Emerging Sovereign Bond	4.578	0.023
Corporate Bonds		
US Investment Grade Bond	3.132	0.036
US High Yield Bond	5.561	0.013
EUR Investment Grade Bond	0.641	0.007
EUR High Yield Bond	1.818	0.033
USD Emerging Market IG & HY	4.638	0.026

US TREASURIES YIELD CURVE

EUR GENERIC YIELD CURVE


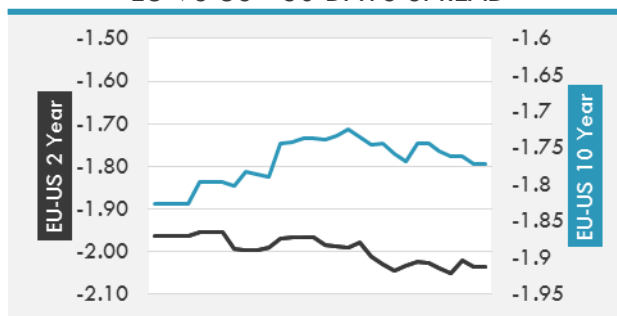
- Treasuries fell after hiring data from last month came in stronger than forecast, underpinning the case for tighter monetary policy.
- Core European bonds open little changed. Limited supply this week at around 25k bund futures equivalent. Monthly ECB QE may show footprints of continued divergence.

OVERNIGHT RATES - SWAPS

	Yield	ΔYield (in Bps)
3M USD LIBOR	1.31194	0.0003
3M EUR EURIBOR	-0.329	0.0000
3M GBP LIBOR	0.27838	-0.0123
3Y USD SWAP	1.7141	0.0242
5Y USD SWAP	1.9006	0.0355
10Y USD SWAP	2.23	0.0365
30Y USD SWAP	2.5282	0.0396

USD CORPORATES - 30 DAYS SPREAD

FIXED INCOME SPREADS

	Spread	ΔSpread (in Bps)
USD 3M vs 10Y Spread	1.18193	0.0447
USD 2Y vs 10Y Spread	0.90706	0.0289
USD IG Spread	1.35	-
USD HY Spread	3.15	(0.0300)
EU vs US 10Y Spread	-1.7942	(0.0168)
EU vs US 2Y Spread	-2.0372	(0.0152)
EM vs Benchmark Spread	242.5	(1.000)

EU VS US - 30 DAYS SPREAD


GLOBAL COMMODITIES MARKET

	Last Price	Daily %
Commodity Index	83.28	-0.07%

Energy

WTI Crude Future	49.58	1.12%
Brent Crude Future	52.42	0.79%
NYMEX Gasoline	164.63	0.88%
NYMEX Heat Oil	164.86	0.59%
ICE Gasoil	488	-0.81%
NYMEX Natural Gas	2.774	-0.93%

Precious Metals

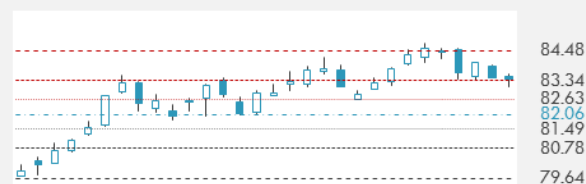
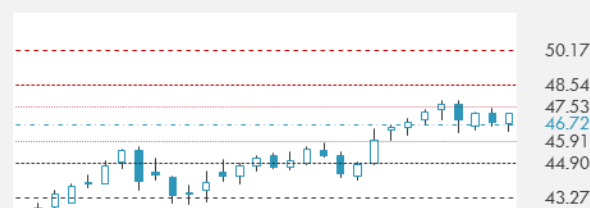
Gold Spot \$/Oz	1258.88	-0.77%
Silver Spot \$/Oz	16.27	-2.33%
Platinum Spot \$/Oz	964.23	0.01%
Palladium Spot \$/Oz	878.08	-0.89%
Gold Future	1264.6	-0.77%
Silver Future	16.252	-2.27%
Platinum Future	969	0.46%
Palladium Future	874.8	-0.70%

Base Metals

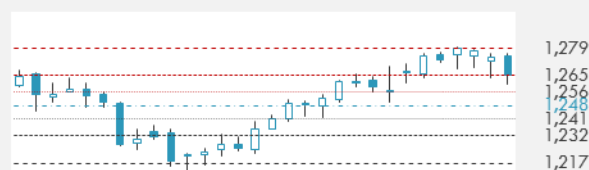
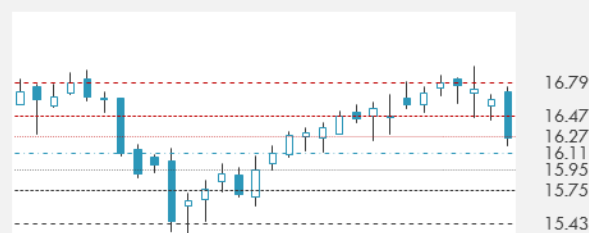
LME Aluminum	1911	-0.29%
LME Copper	6372	0.31%
LME Zinc	2812	0.72%
LME Nickel	10250	-1.25%
LME Lead	2361	-0.25%
LME Tin	20510	-0.68%

Agricultural

Corn CBT	381	0.86%
Wheat CBT	454.75	-0.66%
Soybeans CBT	956.75	-0.39%
Bean Meal CBT	309.4	-1.02%
Rough Rice CBT	12.33	-0.44%
MDE Palm Oil	2608	0.15%
Soybean CBT	34.03	0.68%
Coffee ICE	140.15	-0.04%
Sugar #11 ICE	14.14	-1.19%
Cotton #2 ICE	70.62	0.66%
Cocoa ICE	2021	-3.12%
Ethanol CME	1.576	1.48%
Lumber CME	373.8	-2.61%
Orange Juice ICE	135.3	1.50%
Live Cattle CME	114.1	-0.63%
Feeder Cattle CME	150.85	-0.23%
Lean Hogs CME	66.775	1.95%

COMMODITY INDEX SUPPORT & RESISTANCE

WTI OIL 30 DAYS SUPPORT & RESISTANCE


- Oil traded near \$49 a barrel before representatives of OPEC nations meet with their allies to discuss why some of them are falling behind in pledges to reduce production.

GOLD 30 DAYS SUPPORT & RESISTANCE

SILVER 30 DAYS SUPPORT & RESISTANCE


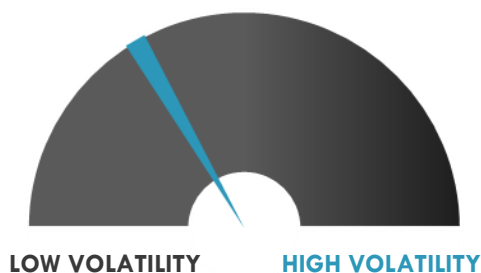
TOP 10 WINNERS

	Ticker	Last Price	Daily %
S&P 500 Stocks			
NEWFIELD EXPLORA	NFX	27.83	5.5
CF INDUSTRIES HO	CF	32.21	4.88
TRIPADVISOR INC	TRIP	39.51	4.5
DEVON ENERGY CO	DVN	33.66	4.31
MACERICH CO	MAC	59.34	4.25
L BRANDS INC	LB	43.3	4.09
MICROCHIP TECH	MCHP	83.49	3.48
MARATHON OIL	MRO	12.9	3.12
FASTENAL CO	FAST	43.86	3.03
GLOBAL PAYMENTS	GPN	97.72	2.7

TOP 10 LOSERS

	Ticker	Last Price	Daily %
S&P 500 Stocks			
VIACOM INC-B	VIAB	30.22	-13.83
FLUOR CORP	FLR	40.06	-8.66
STERICYCLE INC	SRCL	78.45	-5.21
MYLAN NV	MYL	32.92	-5.13
DISCOVERY COMM-C	DISCK	22.6	-4.2
DISCOVERY COMM-A	DISCA	23.73	-4.08
WESTERN DIGITAL	WDC	81.17	-3.95
SYMANTEC CORP	SYMC	29.17	-3.63
NEWELL BRANDS IN	NWL	50.69	-3.56
PERKINELMER INC	PKI	64.29	-3.1

S&P 500 DISTRIBUTION

S&P VOLATILITY INDEX


- UBER knowingly rented defective cars in Singapore, which were at risk of catching fire, and the ride-hailing firm only moved to fix the electrical problem when a driver was in a vehicle that went up in smoke.
- It seems Daimler wants a piece of the self-flying market as it sunk \$30M into Germany's Volocopter. The aviation startup's ultimate goal is to develop a battery-powered air taxi that could revolutionize transport.
- Raytheon has won the dismissal of a \$1B whistleblower lawsuit accusing the defense contractor of overbilling the U.S. government on a contract for satellite sensors.
- "Toyota & Mazda to build a new \$1.6B plant here in the U.S.A. and create 4K new American jobs. A great investment in American manufacturing!" President Trump tweeted.
- Samsung ramps up production on iPhone 8 OLED screens with seven production lines, according to a Korean report cited by 9 to 5 Mac.
- Amazon's Alexa can now provide music for activities such as running or napping or a dinner party. Amazon editors curate the playlists, which draw from the Prime Music streaming service and the Spotify-esque Amazon Music Unlimited.
- Tesla reduced the price on its base version of the Model X by \$3K to \$79.5K, according to its website.
- Chinese automaker Zhejiang Geely Holding Group and its Volvo subsidiary plan to work even closer together on electric vehicle development and other advanced technologies.

KEY ECONOMIC INDICATORS

Country	Event	Surv(M)	Actual	Prior	Time
Bahrain	M1 Money Supply YoY	--	--	--	
Bahrain	M2 Money Supply YoY	--	--	--	
Bahrain	M3 Money Supply YoY	--	--	--	
China	Foreign Reserves	\$3074.9b	--	\$3056.8b	
Eurozone	Sentix Investor Confidence	27.6	--	28.3	11:30
Germany	Industrial Production SA MoM	0.20%	-1.10%	1.20%	9:00
Germany	Industrial Production WDA YoY	3.70%	2.40%	5.00%	9:00
Japan	Leading Index CI	106.2	106.3	104.6	8:00
Japan	Official Reserve Assets	--	\$1260.0b	\$1249.8b	2:50
Japan	Coincident Index	117.2	117.2	115.8	8:00
Kuwait	Annual GDP Current YoY	--	--	-25.90%	
Oman	Nominal GDP YTD YoY	--	--	-5.10%	
Oman	Oil Output YoY Month	--	--	-2.90%	
Qatar	CPI YoY	--	--	0.80%	
Qatar	CPI MoM	--	--	0.70%	
Qatar	PPI YoY	--	--	24.20%	
Russia	Official Reserve Assets	414.8b	--	412.2b	16:00
United Kingdom	Halifax House Prices MoM	0.30%	--	-1.00%	10:30
United Kingdom	Halifax House Price 3Mths/Year	2.10%	--	2.60%	10:30
United States	Consumer Credit	\$15.250b	--	\$18.410b	22:00

Banque BEMO sal
Head Office - Private and Corporate Banking

96 Pasteur Building, Pasteur Street, Medawar Area, P.O. Box: 16-6353, Beirut - Lebanon
 Tel: + 961 1 568 250 Fax: + 961 1 568 266

Investment & Research research@bemobank.com

Beirut Central District Riad El Solh Square, Esseily Building Bloc A, 7th Floor Beirut - Lebanon
 Tel: + 961 1 992 600 Fax: + 961 1 983 368
www.bemobank.com

Disclaimer:

This report is published for information purposes only. The information herein has been compiled from, or based upon sources considered to be reliable (Bloomberg, SeekingAlpha, DailyStar...), but we do not guarantee or assume responsibility for its completeness and accuracy. This document should not be construed as a solicitation to take part in any investment, or as constituting any representation or warranty on our part. This report is not to be relied upon in substitution for the exercise of specialists.

We may not have taken any steps to ensure that the securities referred to in this report are suitable for any particular investor. The investments and services contained or referred to herein are not purported to be exhaustive, any person considering an investment should seek specialist advice on the suitability of an investment.

Nothing in this report constitutes investment, legal, accounting or tax advice, or a representation that any investment or strategy is suitable or appropriate to your individual circumstances, or otherwise constitutes a personal recommendation. Clients understand that it is their responsibility to seek legal and/or tax advice regarding the legal and tax consequences of their investment transactions. The consequences of any action taken on the basis of information contained herein are solely the responsibility of the recipient.

Investment instruments are subject to risk, including possible loss of principal amount invested. Past performance should not be taken as an indication or guarantee of future performance, and no representation or warranty, express or implied, is made regarding future performance. The value of securities and financial instruments is subject to exchange rate fluctuation that may have a positive or adverse effect on the price or income of such securities or financial instruments. Some investments mentioned in this report may have a high level of volatility. High volatility investments may experience sudden and large falls in their value causing losses when that investment is realized. Some investments may not be readily realizable and it may be difficult to sell or realize those investments, similarly it may prove difficult to obtain reliable information about the value, or risks, to which such an investment is exposed.

This report may provide the addresses of websites or references. We have not reviewed any such site and takes no responsibility for the content contained therein. Such address or reference is provided solely for convenience and information. Accessing such website through this report shall be at the recipients own risk.