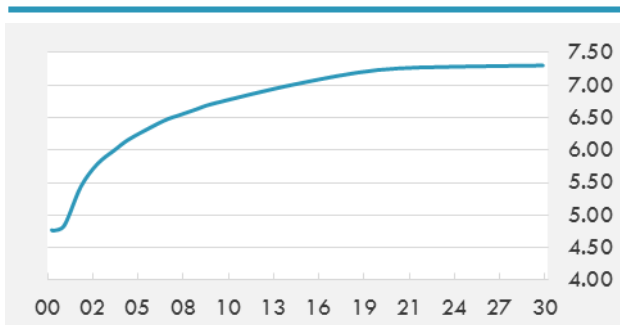


**BEIRUT STOCK EXCHANGE**

	Last	Daily %	YTD %	Dividend %
<b>Development and Reconstruction</b>				
Solidere A	7.85	-1.75%	-24.37%	1.26%
Solidere B	7.74	-3.01%	-26.29%	1.28%
Solidere GDR	7.6	0.00%	-24.00%	1.30%
<b>Banking</b>				
Audi Listed	6	-0.66%	-11.76%	8.31%
BLC Listed	0.99	0.00%	0.00%	0.00%
BOB Listed	18.8	0.00%	0.00%	3.52%
Byblos Listed	1.6	-1.84%	-5.88%	8.27%
BEMO Listed	1.64	0.00%	-3.53%	3.27%
BLOM Listed	11.35	0.44%	7.08%	8.73%
<b>Trading</b>				
RYMCO	3.25	0.00%	0.00%	-
<b>Industrial</b>				
Holcim	11.7	0.00%	-0.43%	20.40%
Ciments Blancs	1.62	0.00%	3.18%	0.00%

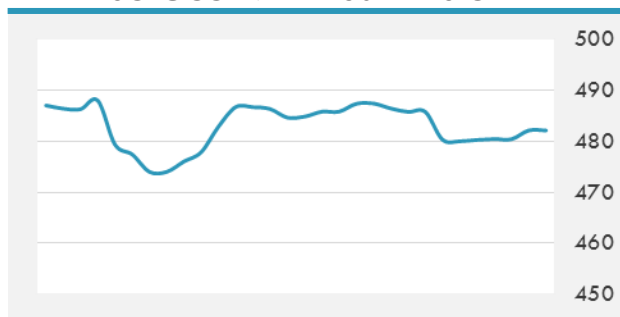
**MSCI LEBANON INDEX - 30 DAYS CHART**

**LEBANESE USD SOVEREIGN CURVE**


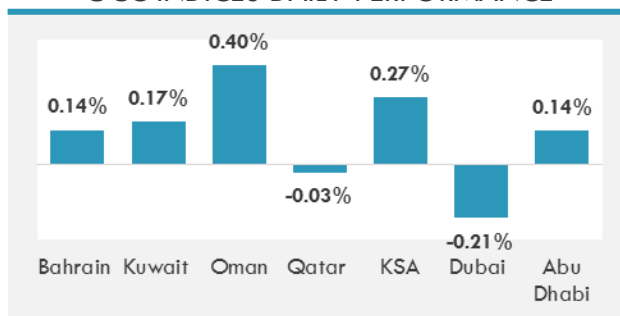
- Finance Minister Ali Hasan Khalil met with a delegation from the International Finance Corporation to discuss public-private partnerships in infrastructure development in Lebanon, according to a Finance Ministry statement issued Monday.
- Syria has started supplying Lebanon with 300 MW of electricity over high-voltage power lines that have remained intact despite a raging war, an official from the Finance Ministry confirmed Monday.

**GCC EQUITY INDICES**

	Last Price	Daily %	YTD %
Bahrain	1324.39	0.14%	8.57%
Kuwait	6837.42	0.17%	18.72%
Oman	5042.31	0.40%	-12.92%
Qatar	9342.56	-0.03%	-10.29%
KSA	7113.37	0.27%	-1.35%
Dubai	3658.14	-0.21%	3.67%
Abu Dhabi	4591.71	0.14%	0.99%

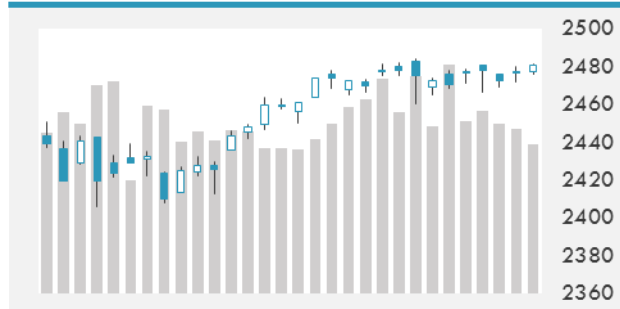
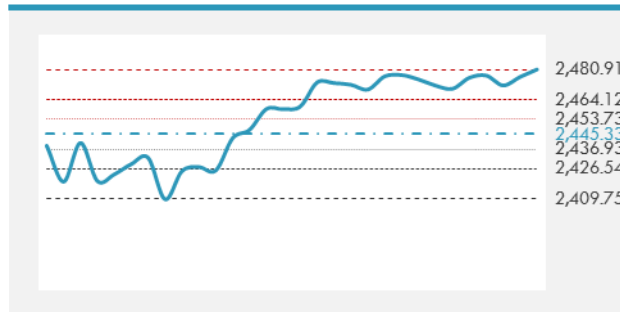
**MSCI GCC INDEX - 30 DAYS CHART**

**LOCAL/GCC FOREIGN EXCHANGE**

	Cross	Last Price
Lebanese Pound Spot	USD/LBP	1506.5
Bahraini Dinar Spot	USD/BHD	0.37716
Kuwaiti Dinar Spot	USD/KWD	0.30194
Omani Rial Spot	USD/OMR	0.38499
Qatari Riyal Spot	USD/QAR	3.6665
Saudi Riyal Spot	USD/SAR	3.7503
UAE Dirham Spot	USD/AED	3.673

**GCC INDICES DAILY PERFORMANCE**


**UNITED STATES EQUITY MARKET INDICES**

	Last Price	Daily %	YTD %	Δ10D Vol
<b>Major Indices</b>				
Dow Jones	22118.42	0.12%	11.92%	-0.08%
S&P 500	2480.91	0.16%	10.81%	-0.31%
Nasdaq	6383.772	0.51%	18.59%	1.00%
<b>Sectors Indices</b>				
Discretionary	725.68	0.19%	12.02%	-1.18%
Staples	570.24	0.72%	7.23%	-0.01%
Energy	479.27	-0.86%	-13.57%	-1.11%
Financials	420.14	-0.18%	8.69%	-1.95%
Healthcare	920.08	0.16%	15.46%	-0.51%
Industrials	587.84	-0.10%	9.25%	0.02%
IT	995.36	0.59%	23.20%	0.69%
Materials	342.17	0.05%	9.61%	-3.17%
Telecom	161.15	0.05%	-8.75%	0.17%
Utilities	273.53	0.20%	10.82%	-1.48%
Real Estate	201.1	0.00%	5.71%	0.01%

**S&P 500 INDEX - 30 DAYS CHART**

**S&P 500 SUPPORT & RESISTANCE**


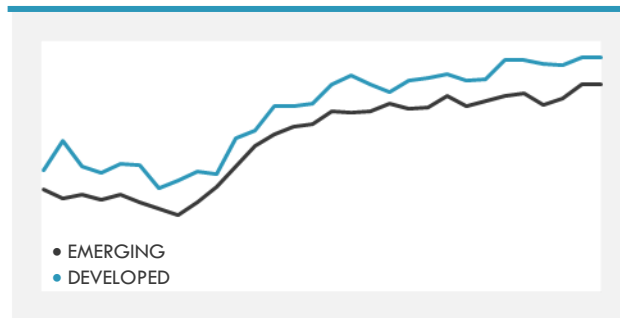
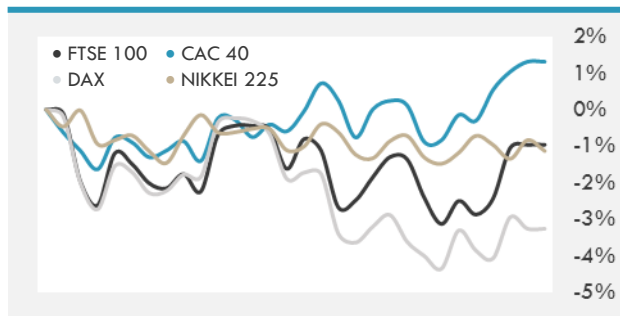
- Asian stocks were mixed, trading at the highest since 2007, after a lackluster U.S. session, and as investors awaited for more clues on global demand and U.S. interest-rate policy.
- U.S. stocks were little changed Monday as gains in consumer shares were offset by losses in energy companies as oil prices slid as officials from oil-producing nations meet in Abu Dhabi to assess production levels.

**INTERNATIONAL MARKETS INDICES**

	Last Price	Daily %	YTD %	Δ10D Vol
World	1174.08	0.27%	13.87%	0.06%
Developed	1971.76	0.20%	12.59%	-0.17%
Emerging	1075.36	0.76%	24.71%	0.80%
Frontier	2753.34	0.19%	13.85%	-0.46%
Europe	129	-0.13%	5.31%	-0.16%
Latin America	2798.04	0.70%	19.54%	0.55%
Asia Pacific	161.27	0.54%	19.42%	0.09%

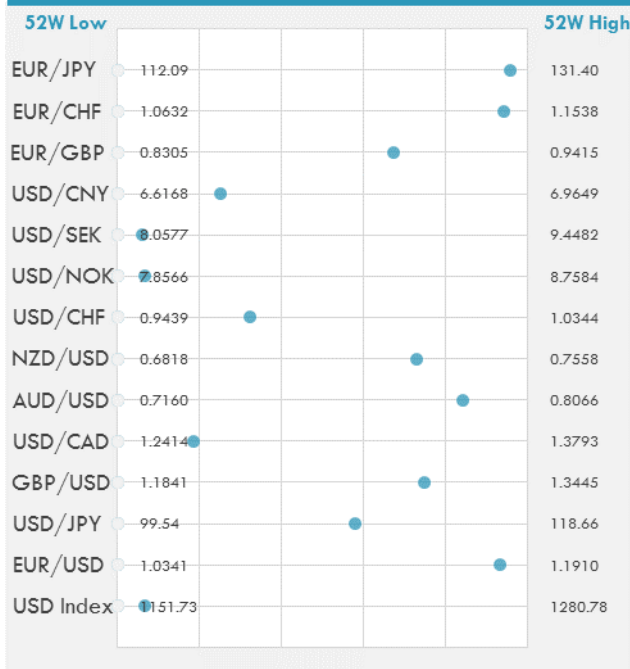
**INTERNATIONAL EQUITY INDICES**

	Last Price	Daily %	YTD %	Δ10D Vol
EuroStoxx 50	3505.8	-0.05%	6.54%	-0.26%
FTSE 100	7531.94	0.27%	5.45%	-0.62%
CAC 40	5207.89	0.09%	7.11%	-0.35%
DAX	12257.17	-0.33%	6.76%	-0.06%
Swiss SMI	9155.13	-0.24%	11.38%	-0.87%
Nikkei 225	19996.01	-0.30%	4.61%	0.58%
CSI 300	3734.35	0.20%	12.82%	-0.08%

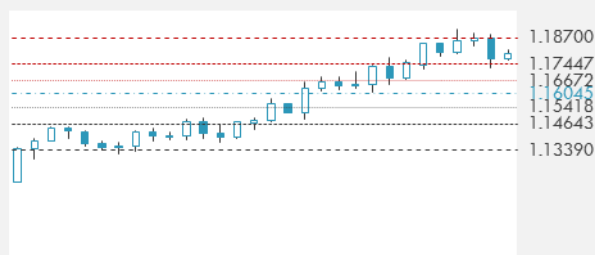
**DEVELOPED VS EMERGING - 30 DAYS CHART**

**INTERNATIONAL EQUITY - 30 DAYS CHART**


**FOREIGN EXCHANGE MARKET**

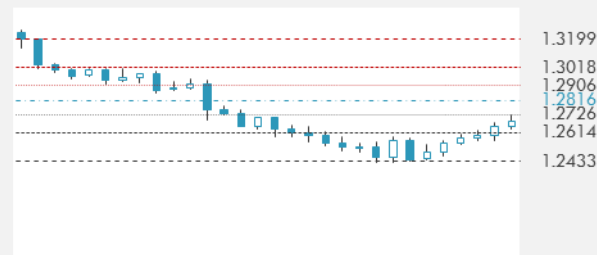
	Last Price	Daily %	Δ10D	Vol 25	ΔRR
<b>Major USD Cross Rate</b>					
USD Index	1160.37	-0.10%	-1.02%	-	
EUR/USD	1.1803	0.07%	-0.75%	0.185	
USD/JPY	110.63	-0.11%	-0.74%	-0.655	
GBP/USD	1.3041	0.05%	-1.17%	-0.035	
USD/CAD	1.2668	-0.09%	-0.76%	0.318	
AUD/USD	0.7923	0.14%	-2.36%	-0.330	
NZD/USD	0.7356	-0.10%	-4.86%	-0.365	
USD/CHF	0.9731	0.01%	-0.21%	0.315	
USD/NOK	7.9174	-0.08%	-1.68%	0.238	
USD/SEK	8.1413	-0.11%	-0.28%	-0.123	
USD/CNY	6.7042	-0.26%	0.21%	0.065	
<b>Major EUR Cross Rate</b>					
EUR/GBP	0.90509	0.01%	-0.01%	0.163	
EUR/CHF	1.14853	0.07%	0.04%	1.060	
EUR/JPY	130.58	-0.04%	-0.02%	-0.328	

**DISTANCE FROM 52 WEEKS LOW/HIGH**


- The Australian dollar rose for the first time in six days after an index showed business confidence improved last month and iron ore prices extended gains.
- The dollar rose against most of its major peers, extending its gains after Friday's stronger-than-expected jobs report.
- The Mexican peso declines for the third straight day amid falling oil prices and rising U.S. yields with the psychological 18.00 level likely remaining a major short-term support.

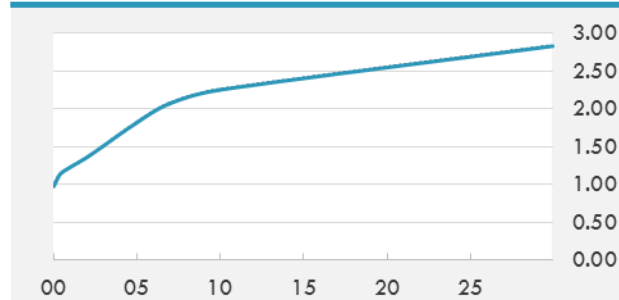
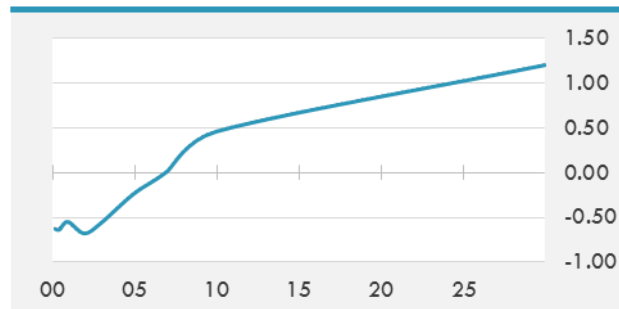
**EUR/USD 30 DAYS SUPPORT & RESISTANCE**

**GBP/USD 30 DAYS SUPPORT & RESISTANCE**

**USD/JPY 30 DAYS SUPPORT & RESISTANCE**

**USD/CAD 30 DAYS SUPPORT & RESISTANCE**


**GLOBAL BOND INDICES**

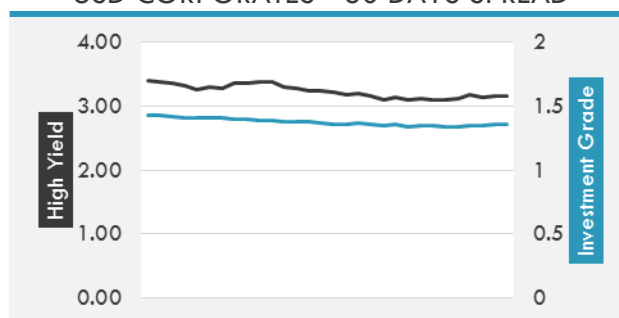
	Yield	ΔYield (in Bps)
<b>Benchmark Indices</b>		
US 10 Years Benchmark	2.253	-0.009
EU 10 Years Benchmark	0.459	-0.009
UK 10 Years Benchmark	1.139	-0.037
<b>Sovereign Bonds</b>		
US Treasury Bond	1.852	-0.007
Eurozone Sovereign Bond	0.619	-0.013
U.K. Sovereign Bond	1.12	-0.037
Japan Sovereign Bond	0.144	0.001
USD Emerging Sovereign Bond	4.569	-0.009
<b>Corporate Bonds</b>		
US Investment Grade Bond	3.128	-0.004
US High Yield Bond	5.564	0.003
EUR Investment Grade Bond	0.633	-0.008
EUR High Yield Bond	1.727	-0.091
USD Emerging Market IG & HY	4.624	-0.014

**US TREASURIES YIELD CURVE**

**EUR GENERIC YIELD CURVE**


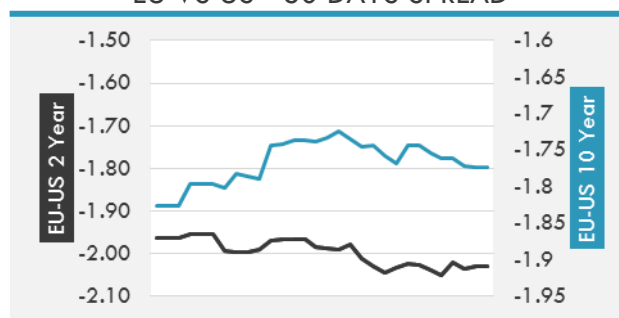
- Treasuries consolidate morning gains in narrow afternoon range to leave yields slightly lower across the curve; further afternoon advance capped by large number of IG deals entering pricing phase.
- Core European 10-year bond yields fell ~1 basis point on Monday; initially edging lower in choppy summer price action and poor volumes before jumping after large block trade in bund futures, and further supported by swapped issuance.

**OVERNIGHT RATES - SWAPS**

	Yield	ΔYield (in Bps)
3M USD LIBOR	1.31194	0.0000
3M EUR EURIBOR	-0.329	0.0000
3M GBP LIBOR	0.27838	0.0000
3Y USD SWAP	1.71	-0.0041
5Y USD SWAP	1.8862	-0.0144
10Y USD SWAP	2.2129	-0.0171
30Y USD SWAP	2.5077	-0.0205

**USD CORPORATES - 30 DAYS SPREAD**

**FIXED INCOME SPREADS**

	Spread	ΔSpread (in Bps)
USD 3M vs 10Y Spread	1.19596	0.0140
USD 2Y vs 10Y Spread	0.89816	(0.0089)
USD IG Spread	1.36	0.0100
USD HY Spread	3.17	0.0200
EU vs US 10Y Spread	-1.7975	(0.0033)
EU vs US 2Y Spread	-2.0311	0.0061
EM vs Benchmark Spread	242.5	-

**EU VS US - 30 DAYS SPREAD**


**GLOBAL COMMODITIES MARKET**

	Last Price	Daily %
Commodity Index	83.72	0.53%

**Energy**

WTI Crude Future	49.39	-0.38%
Brent Crude Future	52.37	-0.10%
NYMEX Gasoline	162.99	-1.00%
NYMEX Heat Oil	163.98	-0.53%
ICE Gasoil	478.5	-1.95%
NYMEX Natural Gas	2.801	0.97%

**Precious Metals**

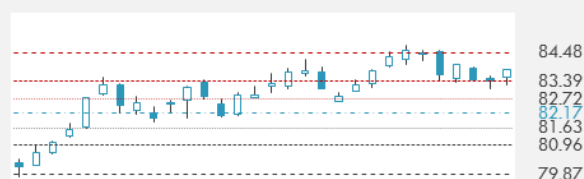
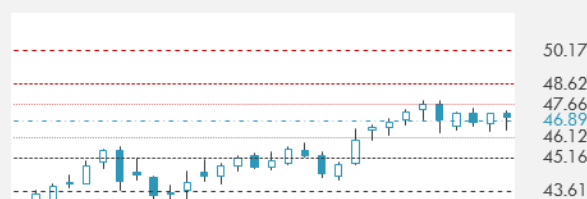
Gold Spot \$/Oz	1257.85	-0.08%
Silver Spot \$/Oz	16.2775	0.05%
Platinum Spot \$/Oz	967.95	0.39%
Palladium Spot \$/Oz	889.61	1.31%
Gold Future	1264.7	0.01%
Silver Future	16.251	-0.01%
Platinum Future	971.6	0.27%
Palladium Future	885.2	1.19%

**Base Metals**

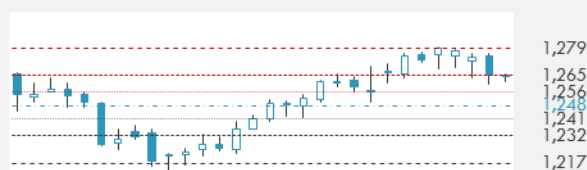
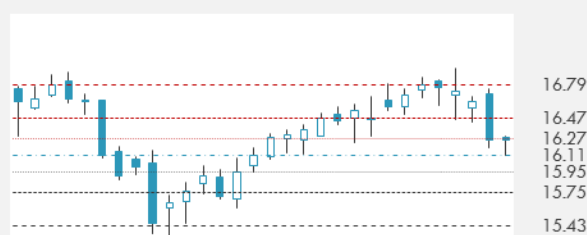
LME Aluminum	1964	2.80%
LME Copper	6414	0.66%
LME Zinc	2858	1.64%
LME Nickel	10400	1.46%
LME Lead	2361	0.00%
LME Tin	20600	0.44%

**Agricultural**

Corn CBT	386.75	1.51%
Wheat CBT	463.5	1.92%
Soybeans CBT	969.75	1.36%
Bean Meal CBT	314.2	1.55%
Rough Rice CBT	12.045	-2.31%
MDE Palm Oil	2574	-1.30%
Soybean CBT	33.93	-0.29%
Coffee ICE	142.05	1.36%
Sugar #11 ICE	13.87	-1.91%
Cotton #2 ICE	70.55	-0.10%
Cocoa ICE	2042	1.04%
Ethanol CME	1.595	1.21%
Lumber CME	367.6	-1.66%
Orange Juice ICE	134.1	-0.89%
Live Cattle CME	111.125	-2.61%
Feeder Cattle CME	147.1	-2.49%
Lean Hogs CME	68.125	2.02%

**COMMODITY INDEX SUPPORT & RESISTANCE**

**WTI OIL 30 DAYS SUPPORT & RESISTANCE**


- Officials from Russia and Kuwait conducted meetings in Abu Dhabi with producers to examine why some are shirking their commitment to reduce output.
- Gold advances as investors weigh comments by Federal Reserve officials ahead of keenly watched U.S. inflation data.

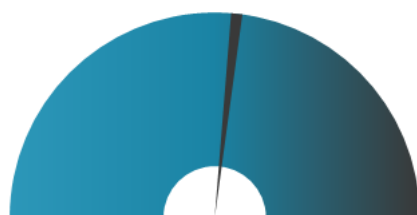
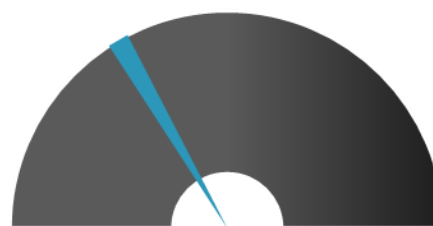
**GOLD 30 DAYS SUPPORT & RESISTANCE**

**SILVER 30 DAYS SUPPORT & RESISTANCE**


**TOP 10 WINNERS**

	Ticker	Last Price	Daily %
<b>S&amp;P 500 Stocks</b>			
ROCKWELL COLLINS	COL	127.07	6.78
TYSON FOODS-A	TSN	66.9	5.69
LAM RESEARCH	LRCX	155.84	3.86
KLA-TENCOR CORP	KLAC	92.01	3.58
QORVO INC	QRVO	68.8	3.27
NVIDIA CORP	NVDA	172.35	3.07
ALBEMARLE CORP	ALB	123.08	2.91
HENRY SCHEIN INC	HSIC	183.79	2.84
ALIGN TECHNOLOGY	ALGN	174.01	2.78
APPLIED MATERIAL	AMAT	43.96	2.66

**TOP 10 LOSERS**

	Ticker	Last Price	Daily %
<b>S&amp;P 500 Stocks</b>			
NEWFIELD EXPLORA	NFX	26.44	-4.99
BRIGHTHOUSE FINA	BHF	61.72	-4.41
MARATHON OIL	MRO	12.35	-4.26
PIONEER NATURAL	PXD	129.64	-4.21
NATL OILWELL VAR	NOV	31.79	-4.19
CHESAPEAKE ENERG	CHK	4.35	-3.97
HELMERICH & PAYN	HP	47.43	-3.87
DEVON ENERGY CO	DVN	32.4	-3.74
HESS CORP	HES	42.86	-3.36
RANGE RESOURCES	RRC	17.35	-2.96

**S&P 500 DISTRIBUTION**

**WINNERS**
**LOSERS**
**S&P VOLATILITY INDEX**

**LOW VOLATILITY**
**HIGH VOLATILITY**

- Tensions are on the rise in Silicon Valley as Google tries to distance itself from an engineer's controversial memo, suggesting biological reasons for gender inequality in tech and the scarcity of women in leadership jobs.
- Tesla intends to raise about \$1.5B in a bond offering as the automaker seeks to fund the production of its newest electric sedan. While Tesla has received more than 1,800 reservations per day for the Model 3 since its launch in late July, Elon Musk confirmed overnight that he's working on "something special" for early reservation holders.
- Alibaba Group and Marriott International form a joint venture to work together in China. The companies say the joint venture will leverage Marriott International's global portfolio of brands and Alibaba's digital retail leadership. The JV will manage Marriott's storefront on Fliggy and also market directly to Alibaba's customer base.
- General Motors issues a recall on over 690K 2014 Chevy Silverado and 2014 GMC Sierra pickups due to a potential software issue that could impact steering.
- Eros Group could sell its entire content library to Apple, according to Reuters sources. Economic Times' sources claim the deal could top \$1B, but Reuters sources expect a far lower amount.
- Samsung announces a new, more durable version of the flagship phone called the Galaxy S8 Active.
- Nissan isn't due to officially showcase its 2018 Nissan Leaf until September 6, but pictures of the new EV are showing up on Twitter and automobile industry websites to create some pre-launch buzz.

**KEY ECONOMIC INDICATORS**

Country	Event	Surv(M)	Actual	Prior	Time
Bahrain	M1 Money Supply YoY	--	--	--	
Bahrain	M2 Money Supply YoY	--	--	--	
Bahrain	M3 Money Supply YoY	--	--	--	
China	Trade Balance	\$45.00b	\$46.74b	\$42.80b	5:47
China	Exports YoY	11.00%	7.20%	11.30%	5:43
China	Imports YoY	18.00%	11.00%	17.20%	5:43
France	Trade Balance	-5050m	--	-4886m	9:45
France	Budget Balance YTD	--	--	-66.4b	9:45
Germany	Trade Balance	23.0b	22.3b	22.0b	9:00
Germany	Exports SA MoM	0.20%	-2.80%	1.40%	9:00
Germany	Current Account Balance	24.5b	23.6b	17.3b	9:00
Germany	Imports SA MoM	0.20%	-4.50%	1.20%	9:00
Japan	BoP Current Account Balance	¥860.5b	¥934.6b	¥1653.9b	2:50
Japan	Trade Balance BoP Basis	¥571.5b	¥518.5b	-¥115.1b	02:50
Japan	BoP Current Account Adjusted	¥1502.9b	¥1522.5b	¥1400.9b	2:50
Japan	Bankruptcies YoY	--	0.28%	-7.47%	7:30
Oman	Nominal GDP YTD YoY	--	--	-5.10%	
Qatar	CPI YoY	--	--	0.80%	
United States	NFIB Small Business Optimism	103.5	--	103.6	13:00
United States	DOE Short-Term Crude Outlook	--	--	49.58	19:00

**Banque BEMO sal**
**Head Office - Private and Corporate Banking**

96 Pasteur Building, Pasteur Street, Medawar Area, P.O. Box: 16-6353, Beirut - Lebanon  
Tel: + 961 1 568 250 Fax: + 961 1 568 266

**Investment & Research** [research@bemobank.com](mailto:research@bemobank.com)

Beirut Central District Riad El Solh Square, Esseily Building Bloc A, 7th Floor Beirut - Lebanon  
Tel: + 961 1 992 600 Fax: + 961 1 983 368  
[www.bemobank.com](http://www.bemobank.com)

**Disclaimer:**

This report is published for information purposes only. The information herein has been compiled from, or based upon sources considered to be reliable (Bloomberg, SeekingAlpha, DailyStar...), but we do not guarantee or assume responsibility for its completeness and accuracy. This document should not be construed as a solicitation to take part in any investment, or as constituting any representation or warranty on our part. This report is not to be relied upon in substitution for the exercise of specialists.

We may not have taken any steps to ensure that the securities referred to in this report are suitable for any particular investor. The investments and services contained or referred to herein are not purported to be exhaustive, any person considering an investment should seek specialist advice on the suitability of an investment.

Nothing in this report constitutes investment, legal, accounting or tax advice, or a representation that any investment or strategy is suitable or appropriate to your individual circumstances, or otherwise constitutes a personal recommendation. Clients understand that it is their responsibility to seek legal and/or tax advice regarding the legal and tax consequences of their investment transactions. The consequences of any action taken on the basis of information contained herein are solely the responsibility of the recipient.

Investment instruments are subject to risk, including possible loss of principal amount invested. Past performance should not be taken as an indication or guarantee of future performance, and no representation or warranty, express or implied, is made regarding future performance. The value of securities and financial instruments is subject to exchange rate fluctuation that may have a positive or adverse effect on the price or income of such securities or financial instruments. Some investments mentioned in this report may have a high level of volatility. High volatility investments may experience sudden and large falls in their value causing losses when that investment is realized. Some investments may not be readily realizable and it may be difficult to sell or realize those investments, similarly it may prove difficult to obtain reliable information about the value, or risks, to which such an investment is exposed.

This report may provide the addresses of websites or references. We have not reviewed any such site and takes no responsibility for the content contained therein. Such address or reference is provided solely for convenience and information. Accessing such website through this report shall be at the recipients own risk.