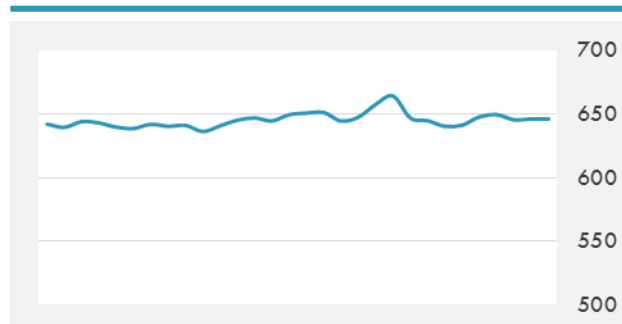
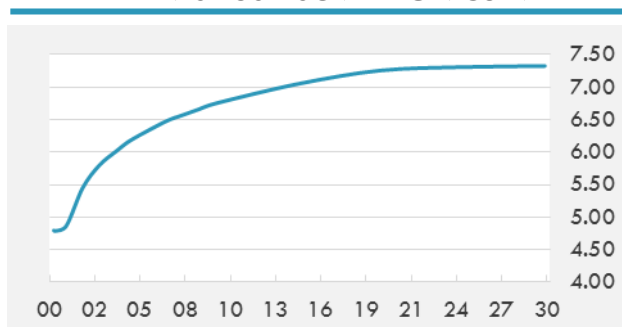


BEIRUT STOCK EXCHANGE

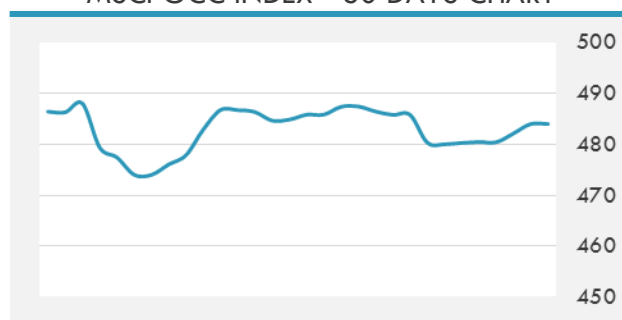
	Last	Daily %	YTD %	Dividend %
Development and Reconstruction				
Solidere A	7.88	0.38%	-24.08%	1.25%
Solidere B	7.75	0.13%	-26.19%	1.27%
Solidere GDR	7.6	0.00%	-24.00%	1.30%
Banking				
Audi Listed	6	0.00%	-11.76%	8.31%
BLC Listed	0.99	0.00%	0.00%	0.00%
BOB Listed	18.8	0.00%	0.00%	3.52%
Byblos Listed	1.6	0.00%	-5.88%	8.27%
BEMO Listed	1.64	0.00%	-3.53%	3.27%
BLOM Listed	11.35	0.00%	7.08%	8.73%
Trading				
RYMCO	3.25	0.00%	0.00%	#VALUE!
Industrial				
Holcim	11.7	0.00%	-0.43%	19.73%
Ciments Blancs	1.62	0.00%	3.18%	0.00%

MSCI LEBANON INDEX - 30 DAYS CHART

LEBANESE USD SOVEREIGN CURVE


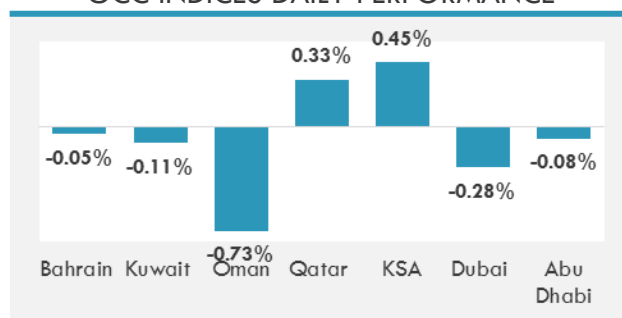
- Demand for consumer goods in general continued to decline in the second half of 2017 despite the positive political atmosphere in Lebanon, according to the Beirut Traders Association-Fransabank Retail Index.
- The subscription base in UAE mobile phone services expanded 2.4 per cent during the first half (H1) of 2017 to 18.7 million subscribers from 18.26 million in the corresponding period last year, a report said.

GCC EQUITY INDICES

	Last Price	Daily %	YTD %
Bahrain	1323.74	-0.05%	8.46%
Kuwait	6829.92	-0.11%	18.82%
Oman	5005.73	-0.73%	-13.44%
Qatar	9373.49	0.33%	-10.19%
KSA	7145.54	0.45%	-0.90%
Dubai	3647.87	-0.28%	3.31%
Abu Dhabi	4588.06	-0.08%	0.92%

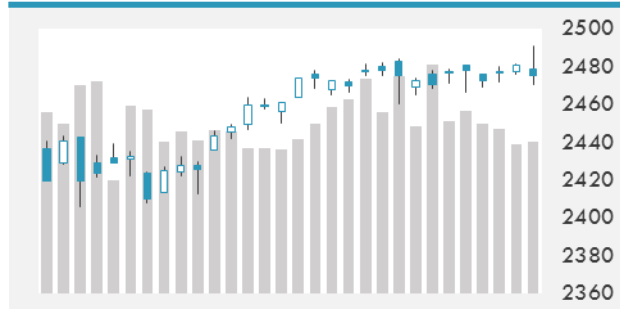
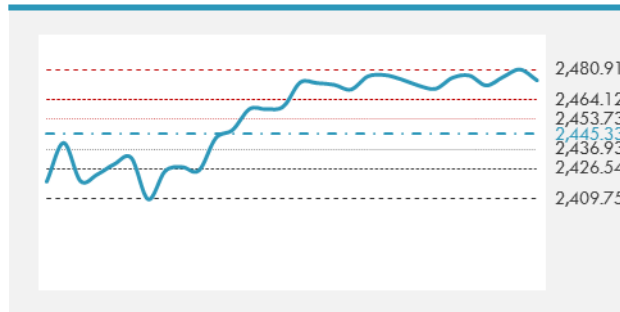
MSCI GCC INDEX - 30 DAYS CHART

LOCAL/GCC FOREIGN EXCHANGE

	Cross	Last Price
Lebanese Pound Spot	USD/LBP	1506.5
Bahraini Dinar Spot	USD/BHD	0.37716
Kuwaiti Dinar Spot	USD/KWD	0.30198
Omani Rial Spot	USD/OMR	0.38499
Qatari Riyal Spot	USD/QAR	3.66
Saudi Riyal Spot	USD/SAR	3.7503
UAE Dirham Spot	USD/AED	3.673

GCC INDICES DAILY PERFORMANCE


UNITED STATES EQUITY MARKET INDICES

	Last Price	Daily %	YTD %	Δ10D Vol
Major Indices				
Dow Jones	22085.34	-0.15%	11.75%	0.59%
S&P 500	2474.92	-0.24%	10.55%	0.35%
Nasdaq	6370.46	-0.21%	18.34%	-0.10%
Sectors Indices				
Discretionary	725.37	-0.04%	11.97%	0.00%
Staples	568.1	-0.38%	6.83%	0.25%
Energy	478.67	-0.13%	-13.68%	-0.07%
Financials	419.42	-0.17%	8.51%	-0.78%
Healthcare	915.62	-0.48%	14.90%	0.29%
Industrials	586.11	-0.29%	8.93%	0.27%
IT	994.04	-0.13%	23.03%	-0.03%
Materials	339.15	-0.88%	8.65%	0.54%
Telecom	160.28	-0.54%	-9.25%	-2.02%
Utilities	274.43	0.33%	11.18%	-1.21%
Real Estate	200.04	-0.53%	5.16%	-1.33%

S&P 500 INDEX - 30 DAYS CHART

S&P 500 SUPPORT & RESISTANCE


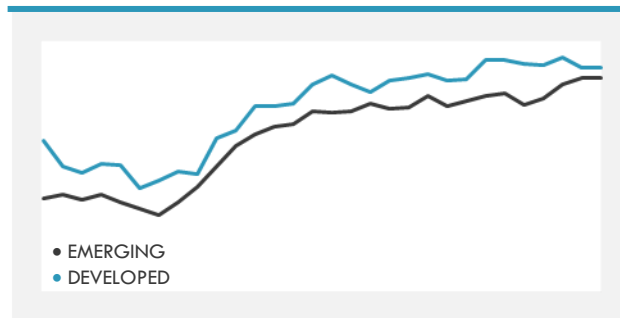
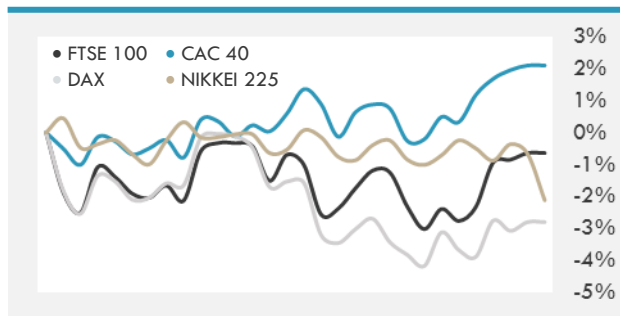
- Asian equities fell, driving the region's benchmark index to its biggest loss in a month, on rising geopolitical risk after President Donald Trump warned the U.S. will retaliate against North Korea, raising tension between the two countries.
- U.S. stocks ended lower Tuesday after President Trump said aggression from North Korea would be met with "fire and fury."
- European stocks ended the session little changed as a rally in carmakers amid a weakening euro offset a decline in travel and leisure companies.

INTERNATIONAL MARKETS INDICES

	Last Price	Daily %	YTD %	Δ10D Vol
World	1171.89	-0.19%	13.66%	0.29%
Developed	1966.81	-0.25%	12.31%	0.44%
Emerging	1078.53	0.29%	25.08%	0.02%
Frontier	2759.44	0.22%	14.11%	-0.44%
Europe	129.25	0.19%	5.51%	-0.34%
Latin America	2793.54	-0.16%	19.35%	-1.27%
Asia Pacific	161.27	0.00%	19.42%	0.05%

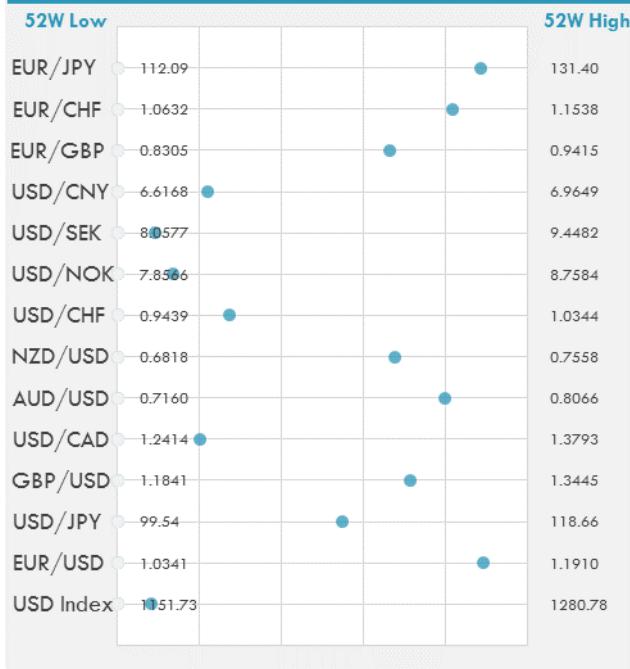
INTERNATIONAL EQUITY INDICES

	Last Price	Daily %	YTD %	Δ10D Vol
EuroStoxx 50	3515.63	0.28%	6.84%	-0.22%
FTSE 100	7542.73	0.14%	5.60%	-0.01%
CAC 40	5218.89	0.21%	7.33%	-0.28%
DAX	12292.05	0.28%	7.06%	-0.04%
Swiss SMI	9162.33	0.08%	11.47%	0.09%
Nikkei 225	19702.97	-1.47%	3.08%	-0.29%
CSI 300	3735.17	0.08%	12.84%	-0.32%

DEVELOPED VS EMERGING - 30 DAYS CHART

INTERNATIONAL EQUITY - 30 DAYS CHART


FOREIGN EXCHANGE MARKET

	Last Price	Daily %	Δ10D	Vol 25	ΔRR
Major USD Cross Rate					
USD Index	1162.17	0.03%	-0.53%	-	
EUR/USD	1.174	-0.10%	-0.48%	0.120	
USD/JPY	110.03	-0.26%	-0.01%	-0.635	
GBP/USD	1.2987	-0.04%	-0.23%	-0.015	
USD/CAD	1.2692	0.20%	-1.07%	0.290	
AUD/USD	0.7883	-0.39%	-0.21%	-0.350	
NZD/USD	0.7317	-0.16%	-0.05%	-0.335	
USD/CHF	0.9686	-0.57%	-2.64%	0.305	
USD/NOK	7.9787	0.27%	-0.89%	0.240	
USD/SEK	8.1859	0.12%	-0.53%	-0.125	
USD/CNY	6.6935	-0.19%	0.03%	0.015	
Major EUR Cross Rate					
EUR/GBP	0.90398	-0.07%	0.01%	0.118	
EUR/CHF	1.13713	-0.67%	0.21%	1.005	
EUR/JPY	129.2	-0.35%	-0.09%	-0.178	

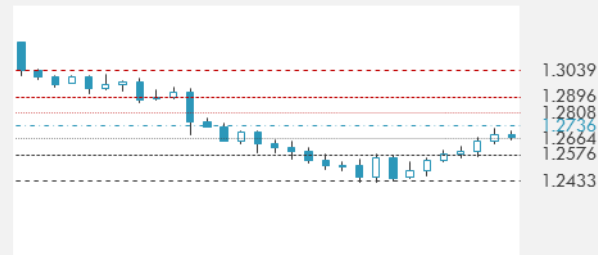
DISTANCE FROM 52 WEEKS LOW/HIGH


- The yen rose against all its major peers as investors sought haven assets after U.S. President Donald Trump and North Korea traded war rhetoric.
- Rupee drops as emerging market currencies fall on risk aversion amid rising tensions in the Korean peninsula
- The pound held a three-day decline versus the dollar after a gauge of retail sales slowed in July. UK government bonds were little changed before an auction of inflation-linked securities.

EUR/USD 30 DAYS SUPPORT & RESISTANCE

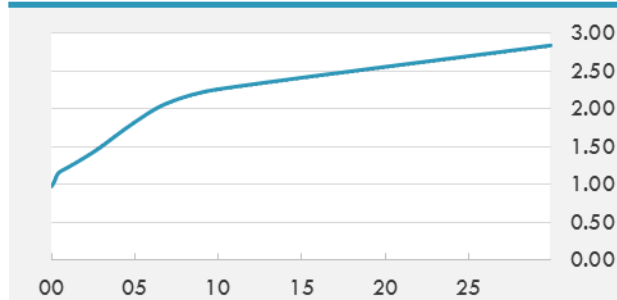
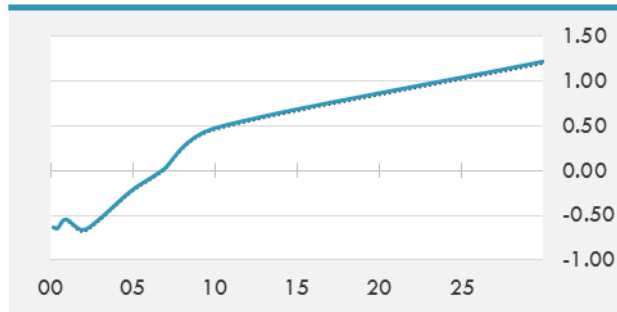
GBP/USD 30 DAYS SUPPORT & RESISTANCE

USD/JPY 30 DAYS SUPPORT & RESISTANCE

USD/CAD 30 DAYS SUPPORT & RESISTANCE


GLOBAL BOND INDICES

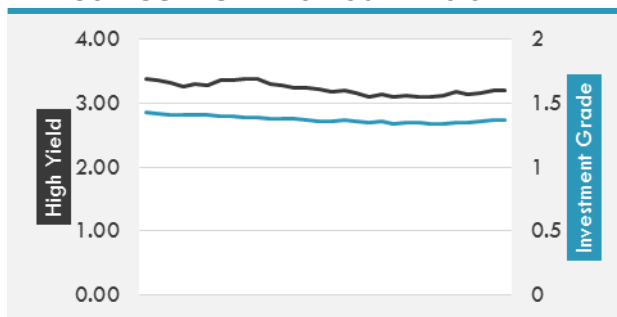
	Yield	ΔYield (in Bps)
Benchmark Indices		
US 10 Years Benchmark	2.2619	0.009
EU 10 Years Benchmark	0.474	0.015
UK 10 Years Benchmark	1.157	0.018
Sovereign Bonds		
US Treasury Bond	1.868	0.016
Eurozone Sovereign Bond	0.63	0.011
U.K. Sovereign Bond	1.132	0.012
Japan Sovereign Bond	0.144	0
USD Emerging Sovereign Bond	4.561	-0.008
Corporate Bonds		
US Investment Grade Bond	3.156	0.028
US High Yield Bond	5.588	0.024
EUR Investment Grade Bond	0.649	0.016
EUR High Yield Bond	1.74	0.013
USD Emerging Market IG & HY	4.625	0.001

US TREASURIES YIELD CURVE

EUR GENERIC YIELD CURVE


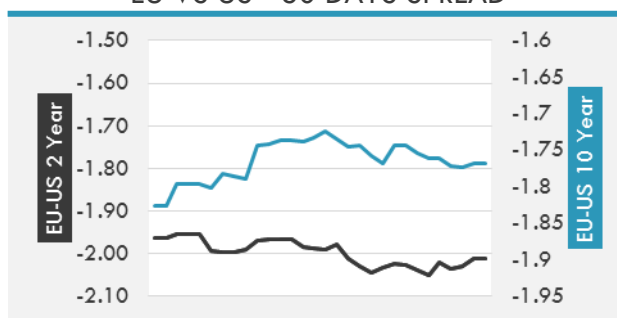
- Treasuries recoup losses and pare curve steepening in late trading after president Trump says North Korea will be “met with fire and fury” if Kim Jong Un’s regime keeps making threats.
- Bund futures called to open higher after Trump raised his rhetoric against North Korea to an unprecedented level, triggering broad risk-off moves through Asian hours.

OVERNIGHT RATES - SWAPS

	Yield	ΔYield (in Bps)
3M USD LIBOR	1.31139	0.0000
3M EUR EURIBOR	-0.328	0.0000
3M GBP LIBOR	0.28213	0.0000
3Y USD SWAP	1.72	0.0100
5Y USD SWAP	1.8946	0.0084
10Y USD SWAP	2.2251	0.0122
30Y USD SWAP	2.5201	0.0124

USD CORPORATES - 30 DAYS SPREAD

FIXED INCOME SPREADS

	Spread	ΔSpread (in Bps)
USD 3M vs 10Y Spread	1.20083	0.0049
USD 2Y vs 10Y Spread	0.90707	0.0089
USD IG Spread	1.37	0.0100
USD HY Spread	3.21	0.0400
EU vs US 10Y Spread	-1.7879	0.0096
EU vs US 2Y Spread	-2.0134	0.0177
EM vs Benchmark Spread	241.5	(1.000)

EU VS US - 30 DAYS SPREAD




GLOBAL COMMODITIES MARKET

	Last Price	Daily %
Commodity Index	83.94	0.27%

Energy

WTI Crude Future	49.17	-0.45%
Brent Crude Future	52.14	-0.44%
NYMEX Gasoline	162.08	-0.56%
NYMEX Heat Oil	162.92	-0.65%
ICE Gasoil	483.5	1.04%
NYMEX Natural Gas	2.822	0.75%

Precious Metals

Gold Spot \$/Oz	1260.96	0.25%
Silver Spot \$/Oz	16.4565	1.10%
Platinum Spot \$/Oz	971.83	0.40%
Palladium Spot \$/Oz	898.78	1.03%
Gold Future	1262.6	-0.17%
Silver Future	16.389	0.85%
Platinum Future	974.5	0.30%
Palladium Future	898.4	1.49%

Base Metals

LME Aluminum	2030	3.36%
LME Copper	6480	1.03%
LME Zinc	2925	2.34%
LME Nickel	10630	2.21%
LME Lead	2383	0.93%
LME Tin	20210	-1.89%

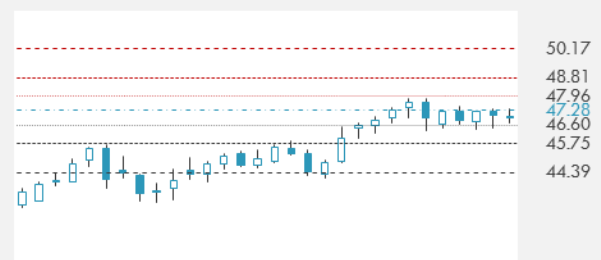
Agricultural

Corn CBT	383.75	-0.78%
Wheat CBT	484	-1.38%
Soybeans CBT	973.25	0.36%
Bean Meal CBT	314.3	0.03%
Rough Rice CBT	12.145	0.83%
MDE Palm Oil	2629	2.14%
Soybean CBT	34.22	0.85%
Coffee ICE	142.75	0.49%
Sugar #11 ICE	13.78	-0.65%
Cotton #2 ICE	71.13	0.82%
Cocoa ICE	2028	-0.69%
Ethanol CME	1.594	-0.06%
Lumber CME	368	0.11%
Orange Juice ICE	131.55	-1.90%
Live Cattle CME	110.6	-0.47%
Feeder Cattle CME	146.65	-0.31%
Lean Hogs CME	67.75	-0.55%

COMMODITY INDEX SUPPORT & RESISTANCE

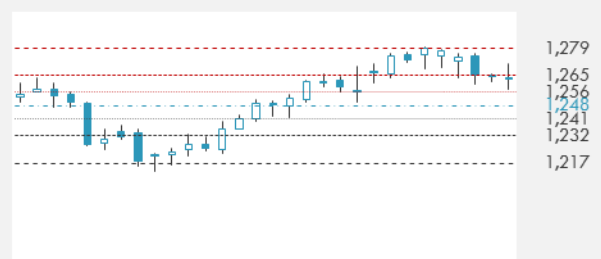


WTI OIL 30 DAYS SUPPORT & RESISTANCE

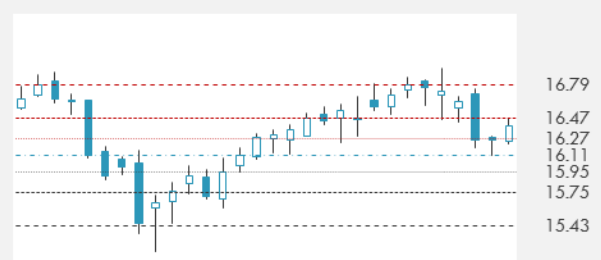


- Oil extended declines for a third day amid speculation that a predicted gain in U.S. output will offset OPEC-led efforts to trim a global glut,
- Gold climbs after US President Trump warns North Korea that further nuclear threats will be met with “fire and fury”.

GOLD 30 DAYS SUPPORT & RESISTANCE



SILVER 30 DAYS SUPPORT & RESISTANCE

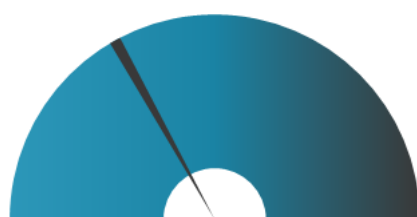
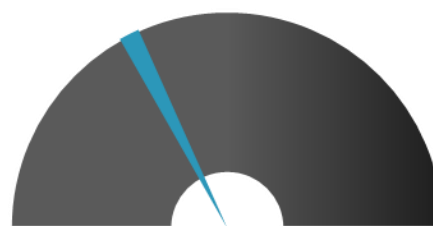


TOP 10 WINNERS

	Ticker	Last Price	Daily %
S&P 500 Stocks			
MICHAEL KORS HOL	KORS	45.25	21.54
RALPH LAUREN COR	RL	88.53	13.28
PIONEER NATURAL	PXD	135.38	4.43
UNDER ARMOUR-A	UAA	19.25	3.72
UNDER ARMO-C	UA	17.21	3.49
JACOBS ENGIN GRP	JEC	54.12	3.46
SEALED AIR CORP	SEE	45	2.6
AES CORP	AES	11.38	2.52
FOOT LOCKER INC	FL	50.04	2.46
CHARTER COMMUN-A	CHTR	389.75	2.29

TOP 10 LOSERS

	Ticker	Last Price	Daily %
S&P 500 Stocks			
BRIGHTHOUSE FINA	BHF	56.9	-7.81
ALBEMARLE CORP	ALB	115.41	-6.23
EXPEDITORS INTL	EXPD	55.92	-5.32
HENRY SCHEIN INC	HSIC	174.02	-5.32
AUTOMATIC DATA	ADP	108.51	-3.26
GARTNER INC	IT	122.3	-3.13
ZOETIS INC	ZTS	60	-2.96
HOST HOTELS & RE	HST	18.21	-2.83
TYSON FOODS-A	TSN	65.02	-2.81
PERKINELMER INC	PKI	64.03	-2.69

S&P 500 DISTRIBUTION

WINNERS
LOSERS
S&P VOLATILITY INDEX

LOW VOLATILITY
HIGH VOLATILITY

- McDonald's is betting that Chinese consumers are hungry for more. The fast food chain plans to open 2,000 new restaurants across the world's most populous nation in just over five years, bringing the total to 4,500.
- James Damore is exploring legal remedies after Google fired the engineer for writing a controversial memo suggesting biological reasons for gender inequality and the scarcity of women in leadership jobs.
- Axios reports that Snap's first original program averages more than 5M unique viewers per episode. "Good Luck America", in its second season, had 29M unique viewers for the whole season, up 45% from the first season. Snapchat counts a user opening the video as a view so the rating numbers don't directly compare to television ratings, but the metrics do provide some context on the success of Snapchat's media endeavors.
- Lockheed Martin Initiated at Overweight, with a \$342 PT, saying it has the right balance of segment margin growth, revenue visibility, leading 5-year CAGR and F-35 ramp up over the coming years.
- Toshiba auditor PricewaterhouseCoopers Aarata will sign off on the company's annual results without approving of the governance, according to Reuterssources.
- Cowen & Co. thinks that more than half of U.S. homes will have Amazon Prime by the end of the year, per CNBC. The firm conducted a monthly survey of 2.5K homes and 49% had Prime.
- Netflix announces that late night TV legend David Letterman will make his return to TV in a six-episode series to be streamed by the company in 2018.

KEY ECONOMIC INDICATORS

Country	Event	Surv(M)	Actual	Prior	Time
Bahrain	M1 Money Supply YoY	--	--	--	
Bahrain	M2 Money Supply YoY	--	--	--	
Bahrain	M3 Money Supply YoY	--	--	--	
China	Trade Balance	\$45.00b	\$46.74b	\$42.80b	5:47
China	Exports YoY	11.00%	7.20%	11.30%	5:43
China	Imports YoY	18.00%	11.00%	17.20%	5:43
France	Trade Balance	-5050m	--	-4886m	9:45
France	Budget Balance YTD	--	--	-66.4b	9:45
Germany	Trade Balance	23.0b	22.3b	22.0b	9:00
Germany	Exports SA MoM	0.20%	-2.80%	1.40%	9:00
Germany	Current Account Balance	24.5b	23.6b	17.3b	9:00
Germany	Imports SA MoM	0.20%	-4.50%	1.20%	9:00
Japan	BoP Current Account Balance	¥860.5b	¥934.6b	¥1653.9b	2:50
Japan	Trade Balance BoP Basis	¥571.5b	¥518.5b	-¥115.1b	02:50
Japan	BoP Current Account Adjusted	¥1502.9b	¥1522.5b	¥1400.9b	2:50
Japan	Bankruptcies YoY	--	0.28%	-7.47%	7:30
Oman	Nominal GDP YTD YoY	--	--	-5.10%	
Qatar	CPI YoY	--	--	0.80%	
United States	NFIB Small Business Optimism	103.5	--	103.6	13:00
United States	DOE Short-Term Crude Outlook	--	--	49.58	19:00

Banque BEMO sal
Head Office - Private and Corporate Banking

96 Pasteur Building, Pasteur Street, Medawar Area, P.O. Box: 16-6353, Beirut - Lebanon
Tel: + 961 1 568 250 Fax: + 961 1 568 266

Investment & Research research@bemobank.com

Beirut Central District Riad El Solh Square, Esseily Building Bloc A, 7th Floor Beirut - Lebanon
Tel: + 961 1 992 600 Fax: + 961 1 983 368
www.bemobank.com

Disclaimer:

This report is published for information purposes only. The information herein has been compiled from, or based upon sources considered to be reliable (Bloomberg, SeekingAlpha, DailyStar...), but we do not guarantee or assume responsibility for its completeness and accuracy. This document should not be construed as a solicitation to take part in any investment, or as constituting any representation or warranty on our part. This report is not to be relied upon in substitution for the exercise of specialists.

We may not have taken any steps to ensure that the securities referred to in this report are suitable for any particular investor. The investments and services contained or referred to herein are not purported to be exhaustive, any person considering an investment should seek specialist advice on the suitability of an investment.

Nothing in this report constitutes investment, legal, accounting or tax advice, or a representation that any investment or strategy is suitable or appropriate to your individual circumstances, or otherwise constitutes a personal recommendation. Clients understand that it is their responsibility to seek legal and/or tax advice regarding the legal and tax consequences of their investment transactions. The consequences of any action taken on the basis of information contained herein are solely the responsibility of the recipient.

Investment instruments are subject to risk, including possible loss of principal amount invested. Past performance should not be taken as an indication or guarantee of future performance, and no representation or warranty, express or implied, is made regarding future performance. The value of securities and financial instruments is subject to exchange rate fluctuation that may have a positive or adverse effect on the price or income of such securities or financial instruments. Some investments mentioned in this report may have a high level of volatility. High volatility investments may experience sudden and large falls in their value causing losses when that investment is realized. Some investments may not be readily realizable and it may be difficult to sell or realize those investments, similarly it may prove difficult to obtain reliable information about the value, or risks, to which such an investment is exposed.

This report may provide the addresses of websites or references. We have not reviewed any such site and takes no responsibility for the content contained therein. Such address or reference is provided solely for convenience and information. Accessing such website through this report shall be at the recipients own risk.