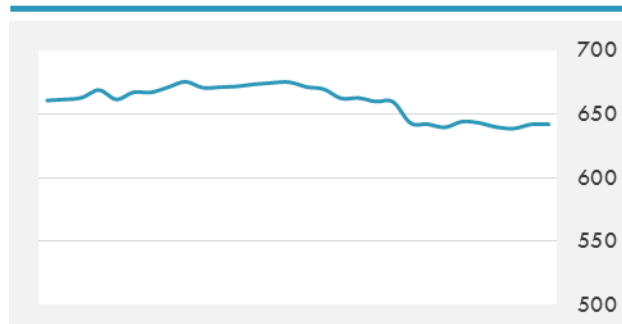
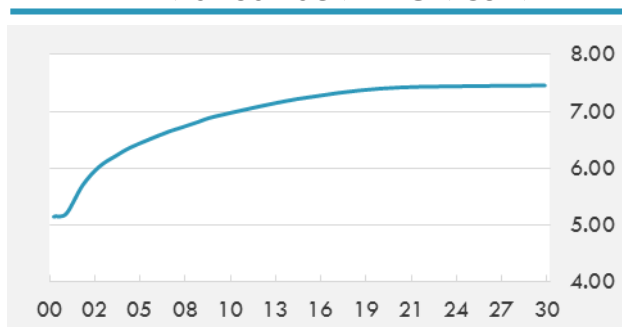


BEIRUT STOCK EXCHANGE

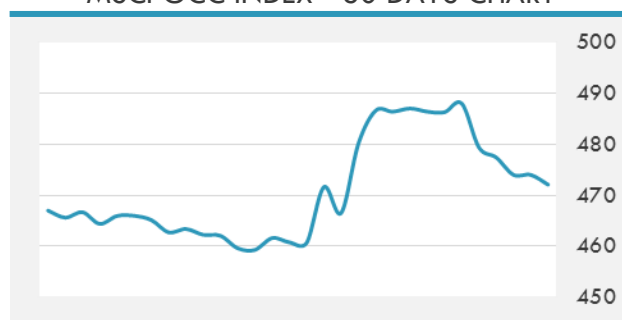
	Last	Daily %	YTD %	Dividend %
Development and Reconstruction				
Solidere A	7.7	-0.39%	-25.82%	1.28%
Solidere B	7.66	-0.91%	-27.05%	1.29%
Solidere GDR	7.6	0.00%	-24.00%	1.30%
Banking				
Audi Listed	6.2	3.33%	-8.82%	8.04%
BLC Listed	0.99	0.00%	0.00%	0.00%
BOB Listed	18.8	0.00%	0.00%	3.52%
Byblos Listed	1.63	0.00%	-4.12%	8.12%
BEMO Listed	1.7	0.00%	0.00%	3.11%
BLOM Listed	11.23	0.27%	5.94%	8.82%
Trading				
RYMCO	3.25	0.00%	0.00%	3.69%
Industrial				
Holcim	12.5	-7.41%	6.38%	6.78%
Ciments Blancs	1.57	0.00%	0.00%	0.00%

MSCI LEBANON INDEX - 30 DAYS CHART

LEBANESE USD SOVEREIGN CURVE


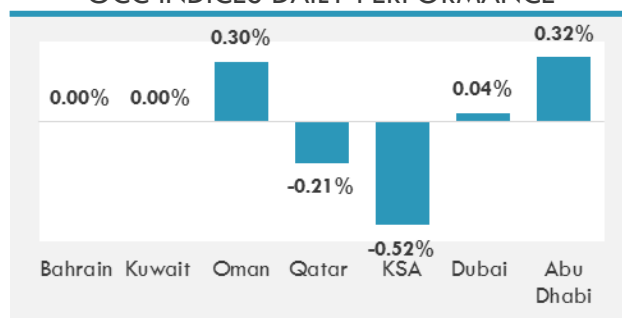
- Parliament must urgently approve the competition law in a bid to put an end to monopolies and allow new companies to enter the Lebanese market, Economy Minister Raed Khoury said.
- Traffic at Rafik Hariri International Airport increased by 7 percent in the first half of 2017, a source at the airport told The Daily Star. From the beginning of January to the end of June 2017, 3.5 million passengers passed through the airport, up from 3.3 million over the same period in 2016.

GCC EQUITY INDICES

	Last Price	Daily %	YTD %
Bahrain	1310.86	0.00%	7.34%
Kuwait	6680.13	0.00%	16.97%
Oman	5134.88	0.30%	-11.20%
Qatar	8904.16	-0.21%	-14.68%
KSA	7166.77	-0.52%	-0.61%
Dubai	3402.66	0.04%	-3.63%
Abu Dhabi	4410.5	0.32%	-2.99%

MSCI GCC INDEX - 30 DAYS CHART

LOCAL/GCC FOREIGN EXCHANGE

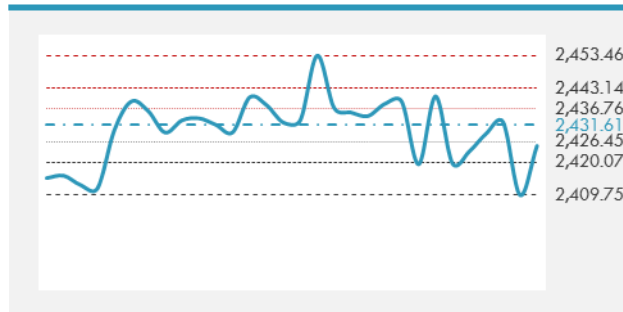
	Cross	Last Price
Lebanese Pound Spot	USD/LBP	1509.5
Bahraini Dinar Spot	USD/BHD	0.3772
Kuwaiti Dinar Spot	USD/KWD	0.30321
Omani Rial Spot	USD/OMR	0.38509
Qatari Riyal Spot	USD/QAR	3.641
Saudi Riyal Spot	USD/SAR	3.75
UAE Dirham Spot	USD/AED	3.673

GCC INDICES DAILY PERFORMANCE


UNITED STATES EQUITY MARKET INDICES

	Last Price	Daily %	YTD %	Δ10D Vol
Major Indices				
Dow Jones	21414.34	0.44%	8.36%	0.39%
S&P 500	2425.18	0.64%	8.32%	0.73%
Nasdaq	6153.079	1.04%	14.30%	1.11%
Sectors Indices				
Discretionary	709.49	0.83%	9.52%	1.21%
Staples	562.39	-0.06%	5.75%	-0.07%
Energy	471.95	-0.10%	-14.89%	-0.53%
Financials	415.6	0.56%	7.52%	-1.19%
Healthcare	916.54	0.57%	15.01%	0.89%
Industrials	586.76	0.75%	9.05%	0.50%
IT	945.57	1.25%	17.03%	1.23%
Materials	339.41	0.52%	8.73%	0.19%
Telecom	150.68	-0.38%	-14.68%	-0.01%
Utilities	261.32	0.14%	5.87%	0.48%
Real Estate	196	0.65%	3.03%	0.45%

S&P 500 INDEX - 30 DAYS CHART

S&P 500 SUPPORT & RESISTANCE


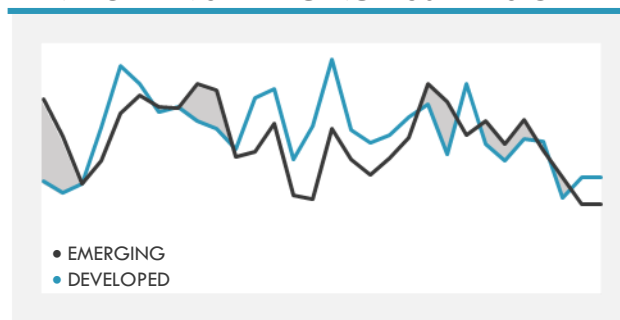
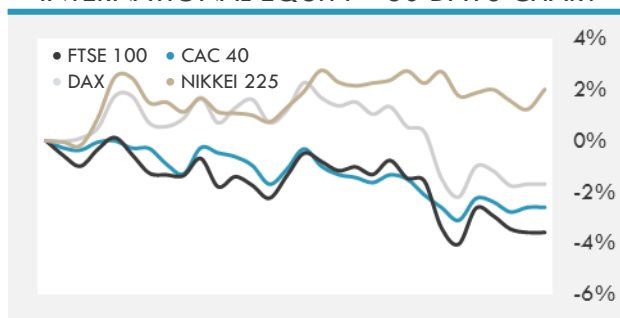
- Asian equities rose, rebounding from their biggest weekly drop in four months, following stronger than expected U.S. hiring data that boosted investor confidence in a global economic recovery. A gauge of technology shares led the advance.
- U.S. indexes advanced following economic data on the labor market and the first official meeting between Donald Trump and Vladimir Putin as the Group of 20 leaders meet in Hamburg.
- European stocks ended the session little changed as a rally in utilities and technology shares outweighed a renewed selloff in the energy sector.

INTERNATIONAL MARKETS INDICES

	Last Price	Daily %	YTD %	Δ10D Vol
World	1134.06	0.15%	9.99%	-0.05%
Developed	1913.18	0.22%	9.25%	0.10%
Emerging	1002.48	-0.37%	16.26%	-1.59%
Frontier	2699.59	-0.10%	11.63%	0.08%
Europe	128.34	-0.08%	4.77%	-0.54%
Latin America	2542.32	0.52%	8.62%	-2.90%
Asia Pacific	152.74	-0.70%	13.10%	0.24%

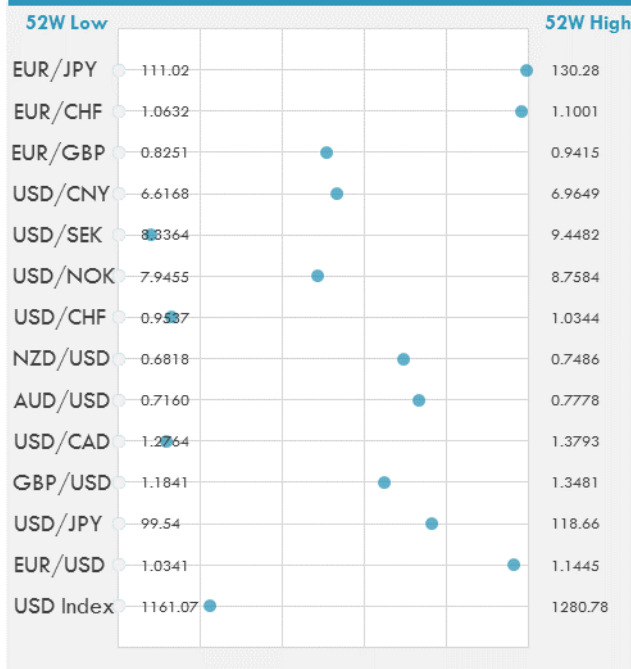
INTERNATIONAL EQUITY INDICES

	Last Price	Daily %	YTD %	Δ10D Vol
EuroStoxx 50	3463.84	0.05%	5.27%	-0.58%
FTSE 100	7350.92	0.19%	2.91%	-0.19%
CAC 40	5145.16	-0.14%	5.82%	-0.77%
DAX	12388.68	0.06%	7.91%	-0.28%
Swiss SMI	8883.27	-0.04%	8.07%	-1.89%
Nikkei 225	20082.89	0.77%	5.07%	0.02%
CSI 300	3661.52	0.15%	10.62%	-2.08%

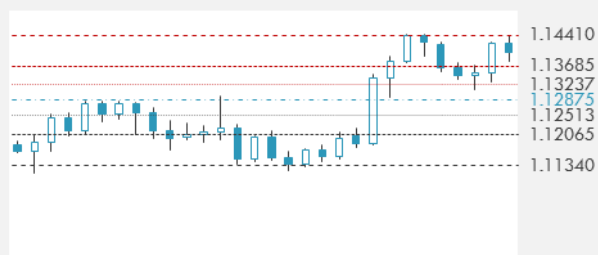
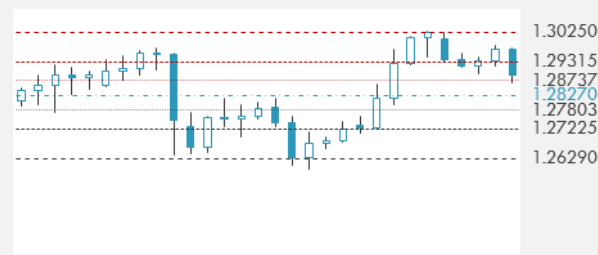
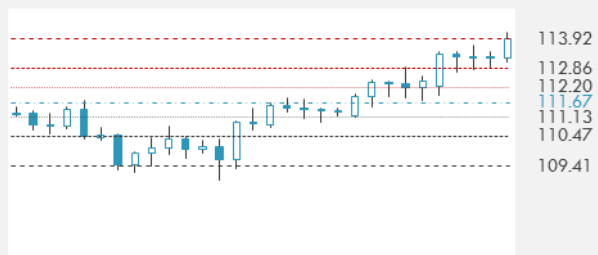
DEVELOPED VS EMERGING - 30 DAYS CHART

INTERNATIONAL EQUITY - 30 DAYS CHART


FOREIGN EXCHANGE MARKET

	Last Price	Daily %	Δ10D	Vol 25	ΔRR
Major USD Cross Rate					
USD Index	1187.75	-0.05%	-1.00%	-	
EUR/USD	1.1405	0.04%	-3.28%	0.515	
USD/JPY	114.15	0.20%	-0.17%	-0.620	
GBP/USD	1.2902	0.09%	-0.69%	-0.200	
USD/CAD	1.2883	0.05%	0.24%	0.523	
AUD/USD	0.7612	0.14%	0.02%	-0.523	
NZD/USD	0.7281	0.00%	-0.20%	-0.473	
USD/CHF	0.9640	0.00%	-3.40%	-0.413	
USD/NOK	8.3403	-0.33%	-0.78%	-0.120	
USD/SEK	8.4235	-0.04%	-1.33%	-0.010	
USD/CNY	6.8015	-0.06%	-0.85%	0.465	
Major EUR Cross Rate					
EUR/GBP	0.88398	-0.07%	-1.19%	0.303	
EUR/CHF	1.09945	0.08%	0.00%	0.185	
EUR/JPY	130.19	0.21%	-5.33%	-0.370	

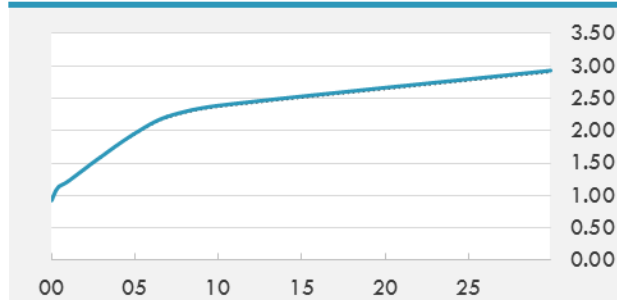
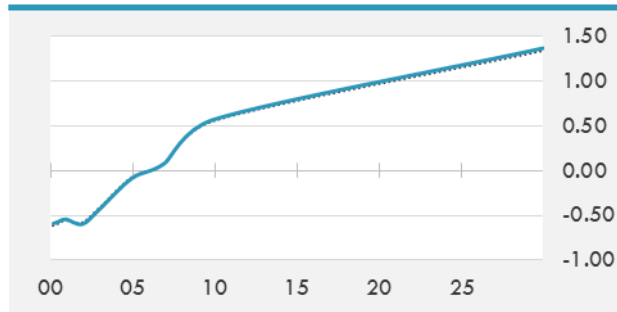
DISTANCE FROM 52 WEEKS LOW/HIGH


- The yen fell for a second day against the dollar after Bank of Japan Governor Haruhiko Kuroda reiterated the central bank remains ready to adjust policy as needed following its intervention last week to cap rising yields.
- The dollar steadied with slight gains overall after the June U.S. employment report delivered a little something for everyone, with robust jobs growth for dollar bulls, while bears focused on the subdued increase in wages.

EUR/USD 30 DAYS SUPPORT & RESISTANCE

GBP/USD 30 DAYS SUPPORT & RESISTANCE

USD/JPY 30 DAYS SUPPORT & RESISTANCE

USD/CAD 30 DAYS SUPPORT & RESISTANCE


GLOBAL BOND INDICES

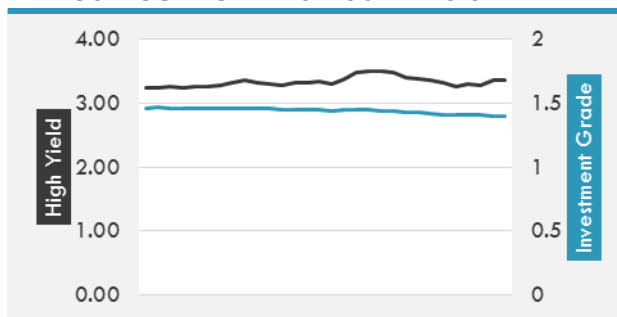
	Yield	ΔYield (in Bps)
Benchmark Indices		
US 10 Years Benchmark	2.3856	0.020
EU 10 Years Benchmark	0.573	0.011
UK 10 Years Benchmark	1.305	-0.011
Sovereign Bonds		
US Treasury Bond	1.948	0.013
Eurozone Sovereign Bond	0.779	0.017
U.K. Sovereign Bond	1.251	-0.012
Japan Sovereign Bond	0.168	-0.003
USD Emerging Sovereign Bond	4.843	0.029
Corporate Bonds		
US Investment Grade Bond	3.263	0.01
US High Yield Bond	5.869	0.074
EUR Investment Grade Bond	0.804	-0.007
EUR High Yield Bond	2.576	0.118
USD Emerging Market IG & HY	4.856	0.022

US TREASURIES YIELD CURVE

EUR GENERIC YIELD CURVE


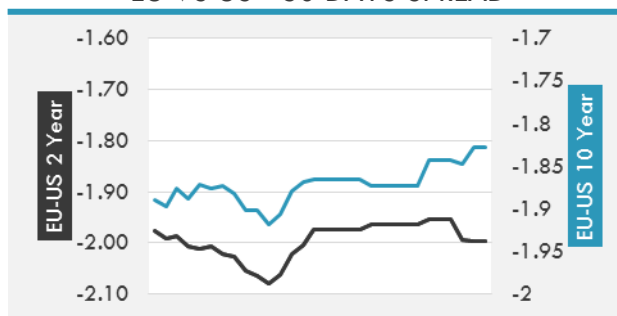
- Treasuries rose after a report showing smaller-than-forecast wage growth cooled expectations for additional Federal Reserve rate hikes this year, even as U.S. employers added more jobs in June than projected.
- Bund futures stabilize after recent sell-off but remain choppy in healthy volumes. Asset swaps begin to pare the sharp tightening. Italian Bond exchange transaction is smooth with large amount sold.

OVERNIGHT RATES - SWAPS

	Yield	ΔYield (in Bps)
3M USD LIBOR	1.30522	0.0011
3M EUR EURIBOR	-0.331	-0.0010
3M GBP LIBOR	0.29838	-0.0025
3Y USD SWAP	1.795	0.0000
5Y USD SWAP	2.0168	0.0046
10Y USD SWAP	2.3534	0.0073
30Y USD SWAP	2.6124	0.0030

USD CORPORATES - 30 DAYS SPREAD

FIXED INCOME SPREADS

	Spread	ΔSpread (in Bps)
USD 3M vs 10Y Spread	1.34884	0.0197
USD 2Y vs 10Y Spread	0.98252	0.0150
USD IG Spread	1.4	(0.0100)
USD HY Spread	3.36	0.0700
EU vs US 10Y Spread	-1.813	0.0317
EU vs US 2Y Spread	-1.9974	(0.0025)
EM vs Benchmark Spread	252.8	0.800

EU VS US - 30 DAYS SPREAD




GLOBAL COMMODITIES MARKET

	Last Price	Daily %
Commodity Index	81.80	-0.74%

Energy

WTI Crude Future	44.23	-2.83%
Brent Crude Future	46.71	-2.91%
NYMEX Gasoline	149.84	-1.98%
NYMEX Heat Oil	144.82	-2.27%
ICE Gasoil	428	-4.14%
NYMEX Natural Gas	2.864	-0.83%

Precious Metals

Gold Spot \$/Oz	1212.46	-1.04%
Silver Spot \$/Oz	15.615	-2.68%
Platinum Spot \$/Oz	907.06	-0.46%
Palladium Spot \$/Oz	841.14	0.66%
Gold Future	1209.7	-1.11%
Silver Future	15.425	-3.49%
Platinum Future	904.1	-0.68%
Palladium Future	831.25	-0.11%

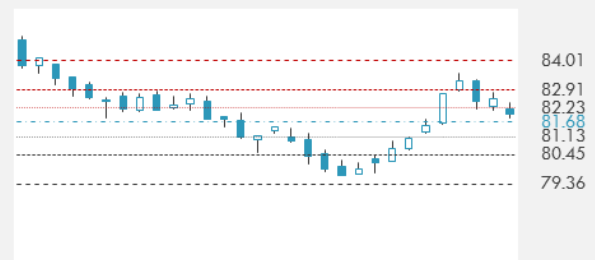
Base Metals

LME Aluminum	1930	-0.72%
LME Copper	5828	-0.39%
LME Zinc	2793	0.29%
LME Nickel	8920	-1.71%
LME Lead	2296	0.53%
LME Tin	19565	-1.91%

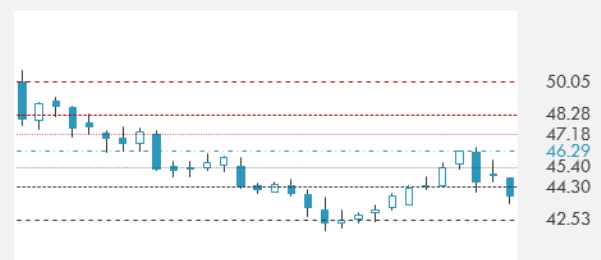
Agricultural

Corn CBT	392.5	0.51%
Wheat CBT	535	-0.74%
Soybeans CBT	1015.5	1.63%
Bean Meal CBT	338	2.52%
Rough Rice CBT	11.995	0.59%
MDE Palm Oil	2554	-0.27%
Soybean CBT	33.32	-0.18%
Coffee ICE	128.9	-0.15%
Sugar #11 ICE	14.15	1.65%
Cotton #2 ICE	68.59	0.35%
Cocoa ICE	1872	-2.85%
Ethanol CME	1.518	0.86%
Lumber CME	352.8	0.00%
Orange Juice ICE	133.75	-2.23%
Live Cattle CME	114.775	-0.15%
Feeder Cattle CME	145.025	0.28%
Lean Hogs CME	83.225	0.70%

COMMODITY INDEX SUPPORT & RESISTANCE



WTI OIL 30 DAYS SUPPORT & RESISTANCE

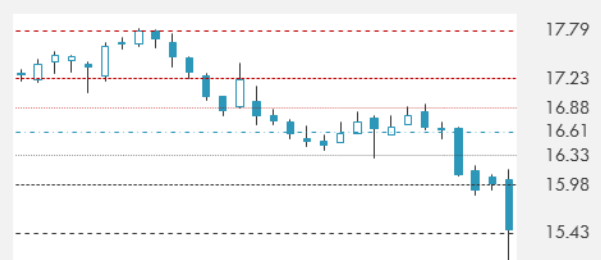


- Oil rebounded after a weekly loss as Kuwait said Libya and Nigeria may be asked to cap supply to help rebalance the market.
- Gold futures posted their fifth straight weekly loss and silver futures sagged to the lowest in 17 months in heavy trading.

GOLD 30 DAYS SUPPORT & RESISTANCE



SILVER 30 DAYS SUPPORT & RESISTANCE

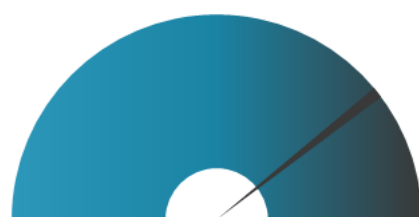
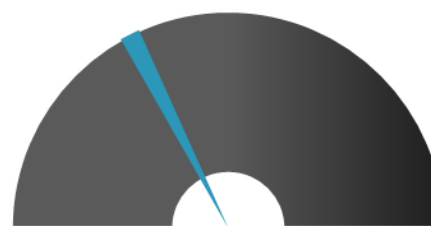


TOP 10 WINNERS

	Ticker	Last Price	Daily %
S&P 500 Stocks			
DR HORTON INC	DHI	35.79	3.77
APPLIED MATERIAL	AMAT	43.54	3.4
LENNAR CORP-A	LEN	53.48	3.1
LAM RESEARCH	LRCX	148.13	2.95
QORVO INC	QRVO	65.86	2.89
INCYTE CORP	INCY	130.84	2.85
COOPER COS INC	COO	242.73	2.77
DELPHI AUTOMOTIV	DLPH	89.12	2.76
ALASKA AIR GROUP	ALK	93.89	2.72
NETFLIX INC	NFLX	150.18	2.69

TOP 10 LOSERS

	Ticker	Last Price	Daily %
S&P 500 Stocks			
L BRANDS INC	LB	45.11	-2.97
CHESAPEAKE ENERG	CHK	4.54	-2.58
HESS CORP	HES	41.79	-2.43
DEVON ENERGY CO	DVN	29.54	-2.12
O'REILLY AUTOMOT	ORLY	172.85	-2.08
CONAGRA BRANDS I	CAG	33.42	-2.08
SCANA CORP	SCG	65.02	-2.08
TRANSOCEAN LTD	RIG	7.88	-1.99
COSTCO WHOLESALE	COST	154.11	-1.9
ONEOK INC	OKE	51.69	-1.73

S&P 500 DISTRIBUTION

WINNERS
LOSERS
S&P VOLATILITY INDEX

LOW VOLATILITY
HIGH VOLATILITY

- Following months of anticipation, Elon Musk has finally unveiled photos of the Model 3, publishing one in monochrome and a second in full color.
- Early indications suggest Homecoming will top \$120M, making it Sony's second highest opening weekend ever and surpassing even the most optimistic industry expectations
- Sears will close 43 additional stores as it works to cut costs and better match changing consumer behavior with its brick-and-mortar strategy.
- Tesla saw a sharp drop in sales in Hong Kong after a tax break for EVs was dramatically lowered on April 1, reports The Wall Street Journal.
- Apple's market share for renting and selling movies is down to between 20% and 35% after being over 50% about five years ago, sources tell The Wall Street Journal.
- Tesla has agreed to build the world's largest lithium-ion battery storage project in South Australia as the state battles outages that have driven up energy prices.
- The Bank of Japan stepped up plans for its bond buying overnight as JGB yields crept higher, causing the yen and oil to drop.
- True Religion plans to close about 30% of its stores as it works through the bankruptcy process. The company's sales were hit hard by the popularity of yoga pants and leggings, as well as lower-priced jeans from brands such as H&M.
- A proxy filing indicates that Whole Foods Market originally asked Amazon for \$45 per share. The resulting \$42 offer from Amazon was its "best and final offer."

KEY ECONOMIC INDICATORS

Country	Event	Surv(M)	Actual	Prior	Time
Bahrain	M2 Money Supply YoY	--	--	1.61%	
Bahrain	M3 Money Supply YoY	--	--	1.63%	
China	CPI YoY	1.60%	1.50%	1.50%	4:30
China	PPI YoY	5.50%	5.50%	5.50%	4:30
China	Money Supply M2 YoY	9.50%	--	9.60%	
China	New Yuan Loans CNY	1300.0b	--	1110.0b	
France	Bank of France Bus. Sentiment	106	--	105	9:30
Germany	Trade Balance	18.7b	22.0b	18.1b	9:00
Germany	Exports SA MoM	0.30%	1.40%	0.90%	9:00
Germany	Current Account Balance	15.4b	17.3b	15.1b	9:00
Germany	Imports SA MoM	0.30%	1.20%	1.20%	9:00
Japan	BoP Current Account Balance	¥1792.8b	¥1653.9b	¥1951.9b	2:50
Japan	Machine Orders MoM	1.70%	-3.60%	-3.10%	2:50
Japan	Machine Orders YoY	7.60%	0.60%	2.70%	2:50
Japan	Trade Balance BoP Basis	-¥45.0b	-¥115.1b	¥553.6b	2:50
Japan	BOJ Kuroda speaks				3:30
Oman	CPI YoY	--	--	1.96%	
Qatar	CPI YoY	--	--	0.10%	
United Kingdom	PM May Presents Repeal Bill				
United States	Consumer Credit	\$13.500b	--	\$8.197b	22:00

Banque BEMO sal
Head Office - Private and Corporate Banking

96 Pasteur Building, Pasteur Street, Medawar Area, P.O. Box: 16-6353, Beirut - Lebanon
Tel: + 961 1 568 250 Fax: + 961 1 568 266

Investment & Research research@bemobank.com

Beirut Central District Riad El Solh Square, Esseily Building Bloc A, 7th Floor Beirut - Lebanon
Tel: + 961 1 992 600 Fax: + 961 1 983 368
www.bemobank.com

Disclaimer:

This report is published for information purposes only. The information herein has been compiled from, or based upon sources considered to be reliable (Bloomberg, SeekingAlpha, DailyStar...), but we do not guarantee or assume responsibility for its completeness and accuracy. This document should not be construed as a solicitation to take part in any investment, or as constituting any representation or warranty on our part. This report is not to be relied upon in substitution for the exercise of specialists.

We may not have taken any steps to ensure that the securities referred to in this report are suitable for any particular investor. The investments and services contained or referred to herein are not purported to be exhaustive, any person considering an investment should seek specialist advice on the suitability of an investment.

Nothing in this report constitutes investment, legal, accounting or tax advice, or a representation that any investment or strategy is suitable or appropriate to your individual circumstances, or otherwise constitutes a personal recommendation. Clients understand that it is their responsibility to seek legal and/or tax advice regarding the legal and tax consequences of their investment transactions. The consequences of any action taken on the basis of information contained herein are solely the responsibility of the recipient.

Investment instruments are subject to risk, including possible loss of principal amount invested. Past performance should not be taken as an indication or guarantee of future performance, and no representation or warranty, express or implied, is made regarding future performance. The value of securities and financial instruments is subject to exchange rate fluctuation that may have a positive or adverse effect on the price or income of such securities or financial instruments. Some investments mentioned in this report may have a high level of volatility. High volatility investments may experience sudden and large falls in their value causing losses when that investment is realized. Some investments may not be readily realizable and it may be difficult to sell or realize those investments, similarly it may prove difficult to obtain reliable information about the value, or risks, to which such an investment is exposed.

This report may provide the addresses of websites or references. We have not reviewed any such site and takes no responsibility for the content contained therein. Such address or reference is provided solely for convenience and information. Accessing such website through this report shall be at the recipients own risk.