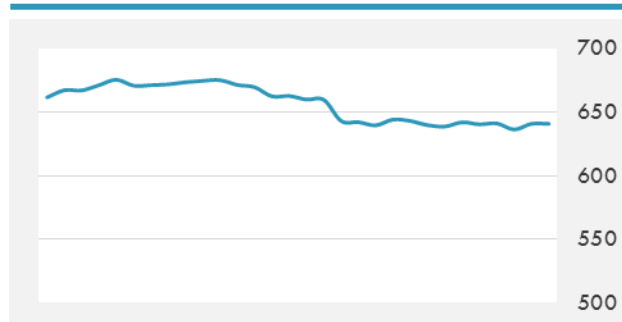
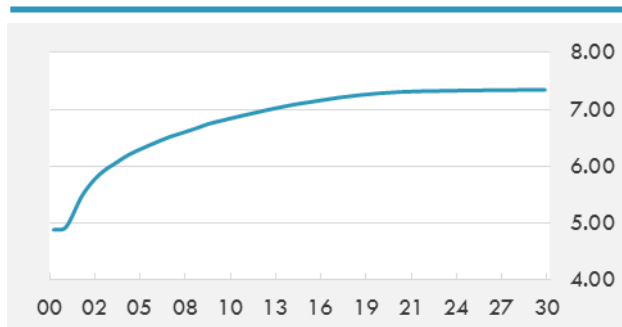


BEIRUT STOCK EXCHANGE

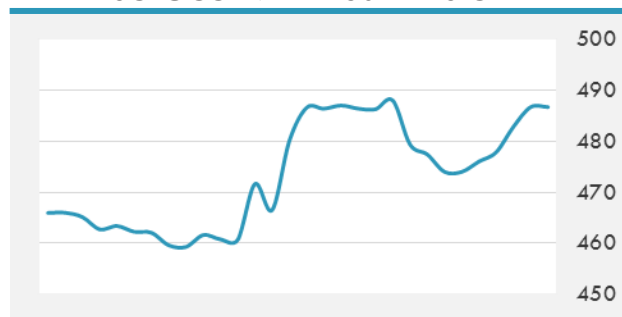
	Last	Daily %	YTD %	Dividend %
Development and Reconstruction				
Solidere A	7.66	1.73%	-26.20%	1.29%
Solidere B	7.33	0.55%	-30.19%	1.35%
Solidere GDR	7.6	0.00%	-24.00%	1.30%
Banking				
Audi Listed	6.2	0.00%	-8.82%	8.04%
BLC Listed	0.99	0.00%	0.00%	0.00%
BOB Listed	18.8	0.00%	0.00%	3.52%
Byblos Listed	1.63	0.00%	-4.12%	8.12%
BEMO Listed	1.64	0.00%	-3.53%	3.27%
BLOM Listed	11.3	0.44%	6.60%	8.77%
Trading				
RYMCO	3.25	0.00%	0.00%	3.69%
Industrial				
Holcim	12.5	0.00%	6.38%	6.42%
Ciments Blancs	1.62	0.00%	3.18%	0.00%

MSCI LEBANON INDEX - 30 DAYS CHART

LEBANESE USD SOVEREIGN CURVE


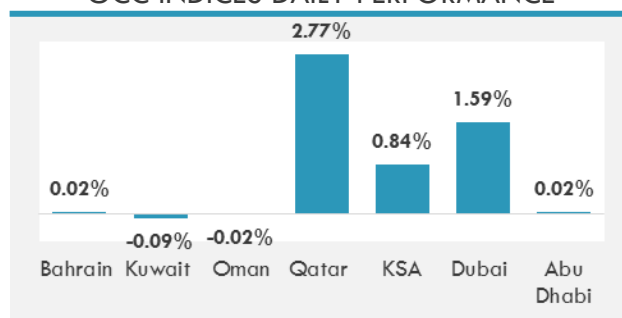
- Foreign Minister and leader of the Free Patriotic Movement Gebran Bassil called for the formation of ministerial economic committees to regularly follow up on the progress of projects undertaken by the government.
- Change and Reform bloc MP Ibrahim Kanaan said Thursday that he expects the Budget and Finance Committee to finalize the draft 2017 state budget next week.

GCC EQUITY INDICES

	Last Price	Daily %	YTD %
Bahrain	1317.38	0.02%	7.94%
Kuwait	6788.48	-0.09%	18.10%
Oman	5170.23	-0.02%	-11.44%
Qatar	9280.38	2.77%	-9.26%
KSA	7306.58	0.84%	1.43%
Dubai	3494.44	1.59%	0.19%
Abu Dhabi	4409.53	0.02%	-0.62%

MSCI GCC INDEX - 30 DAYS CHART

LOCAL/GCC FOREIGN EXCHANGE

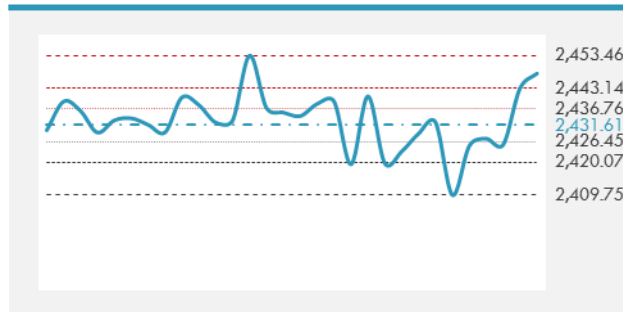
	Cross	Last Price
Lebanese Pound Spot	USD/LBP	1506.5
Bahraini Dinar Spot	USD/BHD	0.37719
Kuwaiti Dinar Spot	USD/KWD	0.30312
Omani Rial Spot	USD/OMR	0.38502
Qatari Riyal Spot	USD/QAR	3.71
Saudi Riyal Spot	USD/SAR	3.7503
UAE Dirham Spot	USD/AED	3.673

GCC INDICES DAILY PERFORMANCE


UNITED STATES EQUITY MARKET INDICES

	Last Price	Daily %	YTD %	Δ10D Vol
Major Indices				
Dow Jones	21553.09	0.10%	9.06%	-1.66%
S&P 500	2447.83	0.19%	9.34%	-1.63%
Nasdaq	6274.437	0.21%	16.56%	-3.26%
Sectors Indices				
Discretionary	715.53	0.08%	10.45%	-1.58%
Staples	559.98	0.01%	5.30%	-2.22%
Energy	479.19	0.44%	-13.58%	0.13%
Financials	415.04	0.61%	7.38%	-0.07%
Healthcare	919.95	0.09%	15.44%	-1.16%
Industrials	590.75	-0.05%	9.79%	-1.64%
IT	972.39	0.33%	20.35%	-4.52%
Materials	344.58	-0.10%	10.39%	-2.68%
Telecom	148.78	-0.57%	-15.76%	-0.38%
Utilities	262.1	-0.35%	6.19%	-1.04%
Real Estate	196.84	0.20%	3.48%	-0.53%

S&P 500 INDEX - 30 DAYS CHART

S&P 500 SUPPORT & RESISTANCE


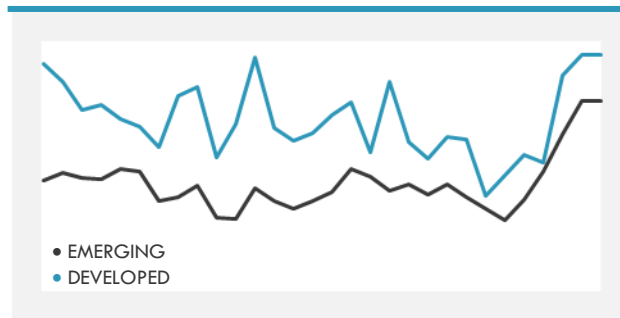
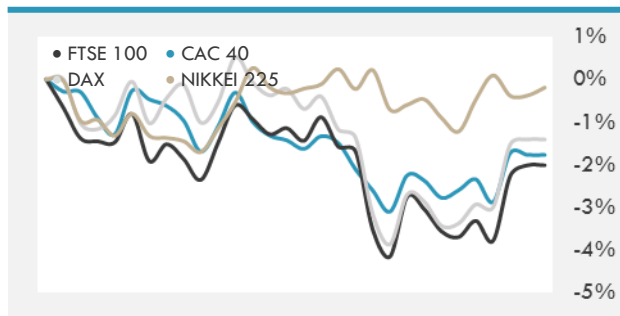
- Asian equities were set for their biggest weekly jump in four months amid expectations that a global economic recovery is intact, with the benchmark regional gauge on course for its longest string of gains since April.
- U.S. stocks edged higher after another day of testimony from Fed Chair Janet Yellen as investors speculated on who may serve next as chair at the Central Bank when her term is over.
- European stocks extended a rally driven by bets that the Federal Reserve won't rush to tighten monetary policy.

INTERNATIONAL MARKETS INDICES

	Last Price	Daily %	YTD %	Δ10D Vol
World	1151.4	0.30%	11.67%	-0.12%
Developed	1936.94	0.21%	10.61%	-0.14%
Emerging	1040.72	1.05%	20.70%	0.47%
Frontier	2734.29	-0.06%	13.07%	0.09%
Europe	130.38	0.30%	6.44%	-0.37%
Latin America	2687.5	0.98%	14.82%	0.17%
Asia Pacific	156.24	0.62%	15.70%	-0.38%

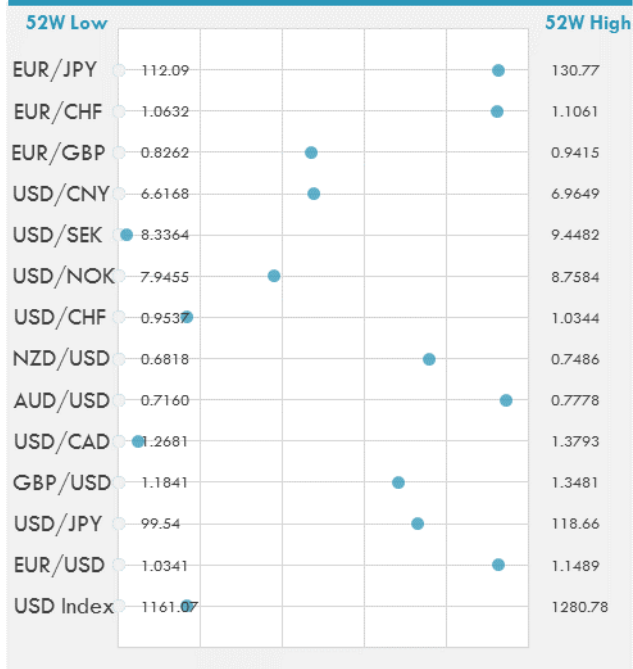
INTERNATIONAL EQUITY INDICES

	Last Price	Daily %	YTD %	Δ10D Vol
EuroStoxx 50	3527.83	0.36%	7.21%	-1.42%
FTSE 100	7413.44	-0.05%	3.79%	-0.64%
CAC 40	5235.4	0.25%	7.67%	-0.89%
DAX	12641.33	0.12%	10.11%	-1.29%
Swiss SMI	9003.57	-0.13%	9.53%	-0.26%
Nikkei 225	20137.44	0.19%	5.35%	-1.72%
CSI 300	3685.2	-0.05%	11.33%	0.97%

DEVELOPED VS EMERGING - 30 DAYS CHART

INTERNATIONAL EQUITY - 30 DAYS CHART


FOREIGN EXCHANGE MARKET

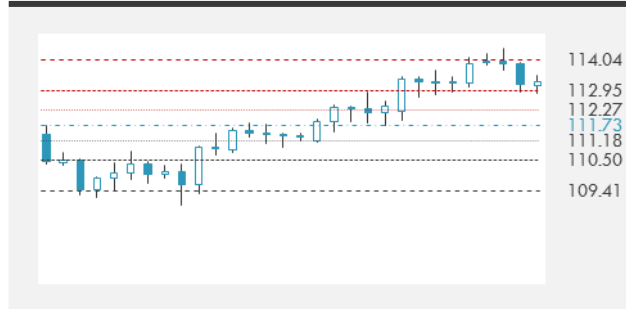
	Last Price	Daily %	Δ10D	Vol 25	ΔRR
Major USD Cross Rate					
USD Index	1180.79	0.02%	-1.67%	-	
EUR/USD	1.1405	0.06%	-0.79%	0.405	
USD/JPY	113.46	0.16%	-1.75%	-1.080	
GBP/USD	1.2957	0.14%	-1.02%	-0.353	
USD/CAD	1.2732	0.08%	-0.40%	0.298	
AUD/USD	0.7743	0.16%	-0.46%	-0.340	
NZD/USD	0.7323	0.04%	-0.65%	-0.290	
USD/CHF	0.9670	-0.02%	-0.96%	-0.315	
USD/NOK	8.2531	-0.08%	-0.39%	0.050	
USD/SEK	8.3579	-0.01%	-1.59%	-0.003	
USD/CNY	6.7824	-0.02%	-0.86%	0.240	
Major EUR Cross Rate					
EUR/GBP	0.88021	-0.08%	0.01%	0.418	
EUR/CHF	1.10278	0.04%	-0.02%	0.530	
EUR/JPY	129.4	0.21%	-0.12%	-0.253	

DISTANCE FROM 52 WEEKS LOW/HIGH


- The dollar headed for a weekly decline before data forecast to show that the U.S. annual inflation rate slowed for a fourth month in June.
- Yen eases after rising to one-week high on Thursday, as market players wait for U.S. inflation data that could affect timing of Fed's next rate increase and balance sheet reduction.
- The yuan heads for a weekly advance as the dollar weakens amid expectations of a slower pace of U.S. rate increases and controversy surrounding the White House.

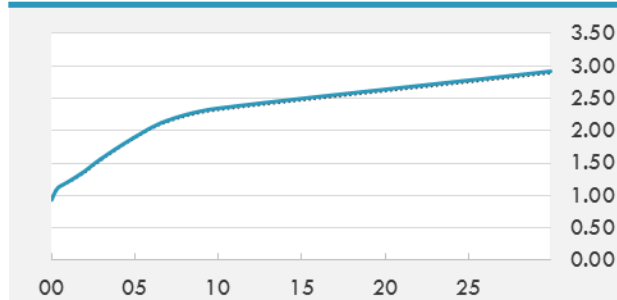
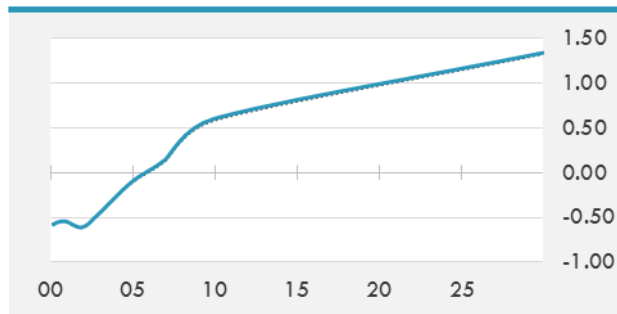
EUR/USD 30 DAYS SUPPORT & RESISTANCE

GBP/USD 30 DAYS SUPPORT & RESISTANCE

USD/JPY 30 DAYS SUPPORT & RESISTANCE

USD/CAD 30 DAYS SUPPORT & RESISTANCE


GLOBAL BOND INDICES

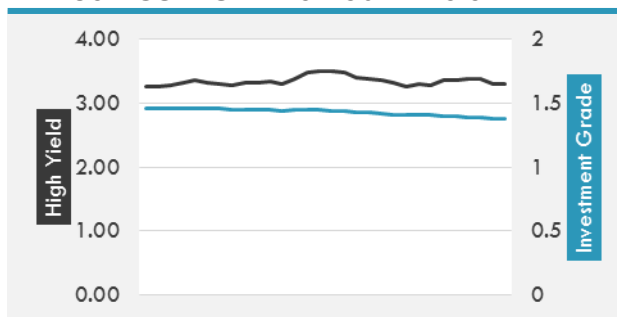
	Yield	ΔYield (in Bps)
Benchmark Indices		
US 10 Years Benchmark	2.3444	0.027
EU 10 Years Benchmark	0.603	0.024
UK 10 Years Benchmark	1.302	0.041
Sovereign Bonds		
US Treasury Bond	1.899	0.016
Eurozone Sovereign Bond	0.754	0.031
U.K. Sovereign Bond	1.238	0.029
Japan Sovereign Bond	0.155	-0.011
USD Emerging Sovereign Bond	4.704	-0.003
Corporate Bonds		
US Investment Grade Bond	3.203	0.013
US High Yield Bond	5.764	-0.021
EUR Investment Grade Bond	0.763	0.008
EUR High Yield Bond	2.508	-0.034
USD Emerging Market IG & HY	4.766	0.002

US TREASURIES YIELD CURVE

EUR GENERIC YIELD CURVE


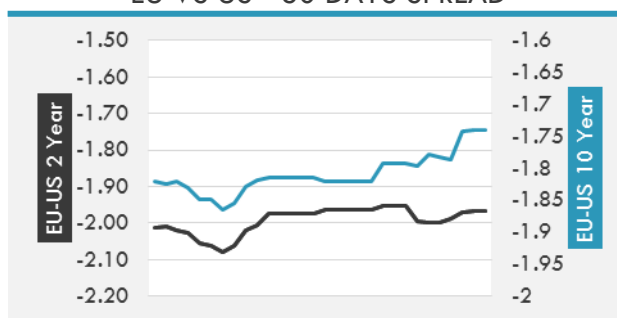
- Treasuries near session lows shortly after 3pm ET after 30Y auction tailed, causing curve to re-steepen; morning session saw Treasuries pressured onto lows as futures extended EGB-led losses through overnight lows.
- German bonds were lower heading into the close of a volatile session, after reversing earlier gains; with stops triggering through 0.50% level on the old 10y benchmark, bunds dropped on a WSJ report (later confirmed) that ECB's Draghi will speak on the future of QE at Jackson Hole.

OVERNIGHT RATES - SWAPS

	Yield	ΔYield (in Bps)
3M USD LIBOR	1.30389	0.0000
3M EUR EURIBOR	-0.331	0.0000
3M GBP LIBOR	0.29469	0.0000
3Y USD SWAP	1.7404	0.0108
5Y USD SWAP	1.9538	0.0048
10Y USD SWAP	2.295	0.0225
30Y USD SWAP	2.5769	0.0277

USD CORPORATES - 30 DAYS SPREAD

FIXED INCOME SPREADS

	Spread	ΔSpread (in Bps)
USD 3M vs 10Y Spread	1.30762	0.0369
USD 2Y vs 10Y Spread	0.97708	0.0063
USD IG Spread	1.38	(0.0100)
USD HY Spread	3.31	(0.0700)
EU vs US 10Y Spread	-1.7435	0.0040
EU vs US 2Y Spread	-1.9676	0.0038
EM vs Benchmark Spread	249.8	(1.800)

EU VS US - 30 DAYS SPREAD


GLOBAL COMMODITIES MARKET

	Last Price	Daily %
Commodity Index	81.92	-0.88%

Energy

WTI Crude Future	46.08	1.30%
Brent Crude Future	48.42	1.42%
NYMEX Gasoline	152.61	0.35%
NYMEX Heat Oil	149.17	1.22%
ICE Gasoil	443.25	1.37%
NYMEX Natural Gas	2.961	-0.80%

Precious Metals

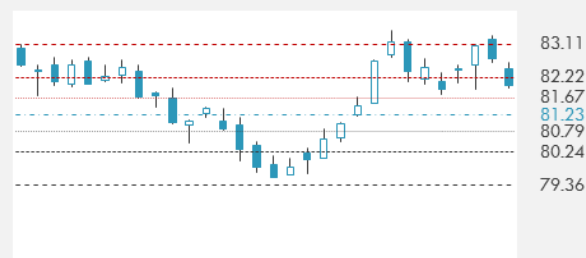
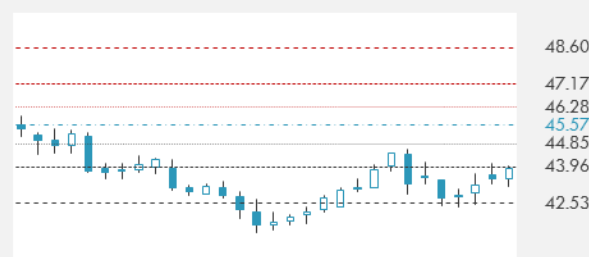
Gold Spot \$/Oz	1217.58	-0.24%
Silver Spot \$/Oz	15.7025	-1.36%
Platinum Spot \$/Oz	905.76	-1.18%
Palladium Spot \$/Oz	858.25	-0.74%
Gold Future	1217.3	-0.15%
Silver Future	15.691	-1.23%
Platinum Future	907.1	-1.29%
Palladium Future	854.75	-0.79%

Base Metals

LME Aluminum	1923	1.80%
LME Copper	5876	-0.49%
LME Zinc	2804	-1.04%
LME Nickel	9210	0.05%
LME Lead	2294	-1.42%
LME Tin	19805	-0.48%

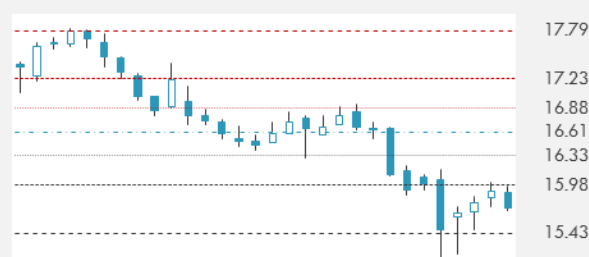
Agricultural

Corn CBT	369.75	-4.09%
Wheat CBT	511.75	-4.70%
Soybeans CBT	987.5	-4.50%
Bean Meal CBT	325.1	-5.30%
Rough Rice CBT	11.755	-0.68%
MDE Palm Oil	2557	-0.93%
Soybean CBT	33.5	-1.44%
Coffee ICE	131.2	2.82%
Sugar #11 ICE	14.14	4.82%
Cotton #2 ICE	66.37	-1.34%
Cocoa ICE	1872	2.80%
Ethanol CME	1.512	-2.45%
Lumber CME	367.4	-1.02%
Orange Juice ICE	128.95	0.12%
Live Cattle CME	117.825	0.00%
Feeder Cattle CME	153.025	0.84%
Lean Hogs CME	69.325	0.07%

COMMODITY INDEX SUPPORT & RESISTANCE

WTI OIL 30 DAYS SUPPORT & RESISTANCE


- Oil is set to rise this week, 2017 demand is seen growing more than previously expected, and U.S. stockpiles are declining. Prices are still less than a \$1 higher than when OPEC pledged to curb output late last year.

GOLD 30 DAYS SUPPORT & RESISTANCE

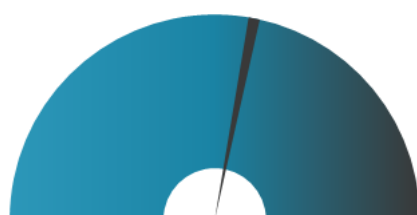
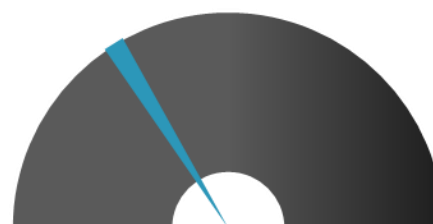
SILVER 30 DAYS SUPPORT & RESISTANCE


TOP 10 WINNERS

	Ticker	Last Price	Daily %
S&P 500 Stocks			
GAP INC/THE	GPS	22.78	5.61
NRG ENERGY	NRG	22.2	5.26
TARGET CORP	TGT	53.31	4.8
KOHL'S CORP	KSS	38.93	4.79
T ROWE PRICE GRP	TROW	79.19	4.78
AUTONATION INC	AN	42.9	4.33
O'REILLY AUTOMOT	ORLY	184.63	4.25
MACY'S INC	M	22.1	4.1
NETAPP INC	NTAP	41.38	3.01
TRANSOCEAN LTD	RIG	8.31	2.97

TOP 10 LOSERS

	Ticker	Last Price	Daily %
S&P 500 Stocks			
ADV MICRO DEVICE	AMD	13.53	-5.32
TWENTY-FIRST C-A	FOXA	27.57	-3.77
SEAGATE TECHNOLO	STX	38.32	-3.48
TWENTY-FIRST - B	FOX	27.4	-3.21
EDWARDS LIFE	EW	116.03	-2.03
DELTA AIR LI	DAL	54.5	-1.77
ULTA BEAUTY INC	ULTA	257.4	-1.7
AT&T INC	T	36.21	-1.68
ELECTRONIC ARTS	EA	108.98	-1.54
ALLEGION PLC	ALLE	80.79	-1.46

S&P 500 DISTRIBUTION

WINNERS
LOSERS
S&P VOLATILITY INDEX

LOW VOLATILITY
HIGH VOLATILITY

- Daimler has been accused of selling over a million cars with excessive emissions in Europe and the U.S. for almost a decade
- Pimco is suing Wells Fargo for withholding money allegedly owed to bond investors, in a dispute that could have implications for billions of dollars still locked up in mortgage securities created before the financial crisis.
- China's imports from North Korea dropped 13.2% in January-to-June, but exports rose 29.1% during the period, as overall trade expanded 10.5% to \$2.55B in the six months.
- OPEC's compliance with its own oil supply cuts fell to 78% in June, according to the IEA, which suggested some members had "opened the taps."
- Qatar Airways still plans to purchase a 10% stake in American Airlines despite the U.S. carrier ending its code-share deal.
- Sanctions imposed by Arab states pushed Qatar's inflation rate up only modestly in June, suggesting Doha is having considerable success in limiting economic damage caused by its diplomatic crisis.
- Reuters reports that the French government plans to appeal yesterday's court decision about back taxes that favored Google
- Salesforce announces that the company's Intelligent Customer Success Platform is now live on Amazon Web Services for customers in Canada.
- Baidu plans to start testing autonomous vehicles in the city of Baoding within the Hebei province, according to Shanghaiist citing reports in the government-backed People's Daily.

KEY ECONOMIC INDICATORS

Country	Event	Surv(M)	Actual	Prior	Time
Eurozone	EU27 New Car Registrations	--	--	7.60%	9:00
Italy	CPI EU Harmonized YoY	1.20%	--	1.20%	11:00
Italy	Trade Balance Total	--	--	3601m	12:00
Japan	Industrial Production MoM	--	-3.60%	-3.30%	7:30
Japan	Industrial Production YoY	--	6.50%	6.80%	7:30
Japan	Capacity Utilization MoM	--	-4.10%	4.30%	7:30
United States	CPI MoM	0.10%	--	-0.10%	15:30
United States	U. of Mich. Sentiment	95	--	95.1	17:00
United States	Retail Sales Advance MoM	0.10%	--	-0.30%	15:30
United States	Industrial Production MoM	0.30%	--	0.00%	16:15
United States	CPI Ex Food and Energy MoM	0.20%	--	0.10%	15:30
United States	CPI YoY	1.70%	--	1.90%	15:30
United States	Baker Hughes U.S. Rig Count	--	--	952	20:00
United States	Retail Sales Ex Auto MoM	0.20%	--	-0.30%	15:30
United States	Retail Sales Ex Auto and Gas	0.40%	--	0.00%	15:30
United States	Capacity Utilization	76.80%	--	76.60%	16:15
United States	CPI Ex Food and Energy YoY	1.70%	--	1.70%	15:30
United States	CPI Core Index SA	251.71	--	251.329	15:30
United States	Business Inventories	0.30%	--	-0.20%	17:00
United States	CPI Index NSA	245.105	--	244.733	15:30

Banque BEMO sal
Head Office - Private and Corporate Banking

96 Pasteur Building, Pasteur Street, Medawar Area, P.O. Box: 16-6353, Beirut - Lebanon
Tel: + 961 1 568 250 Fax: + 961 1 568 266

Investment & Research research@bemobank.com

Beirut Central District Riad El Solh Square, Esseily Building Bloc A, 7th Floor Beirut - Lebanon
Tel: + 961 1 992 600 Fax: + 961 1 983 368
www.bemobank.com

Disclaimer:

This report is published for information purposes only. The information herein has been compiled from, or based upon sources considered to be reliable (Bloomberg, SeekingAlpha, DailyStar...), but we do not guarantee or assume responsibility for its completeness and accuracy. This document should not be construed as a solicitation to take part in any investment, or as constituting any representation or warranty on our part. This report is not to be relied upon in substitution for the exercise of specialists.

We may not have taken any steps to ensure that the securities referred to in this report are suitable for any particular investor. The investments and services contained or referred to herein are not purported to be exhaustive, any person considering an investment should seek specialist advice on the suitability of an investment.

Nothing in this report constitutes investment, legal, accounting or tax advice, or a representation that any investment or strategy is suitable or appropriate to your individual circumstances, or otherwise constitutes a personal recommendation. Clients understand that it is their responsibility to seek legal and/or tax advice regarding the legal and tax consequences of their investment transactions. The consequences of any action taken on the basis of information contained herein are solely the responsibility of the recipient.

Investment instruments are subject to risk, including possible loss of principal amount invested. Past performance should not be taken as an indication or guarantee of future performance, and no representation or warranty, express or implied, is made regarding future performance. The value of securities and financial instruments is subject to exchange rate fluctuation that may have a positive or adverse effect on the price or income of such securities or financial instruments. Some investments mentioned in this report may have a high level of volatility. High volatility investments may experience sudden and large falls in their value causing losses when that investment is realized. Some investments may not be readily realizable and it may be difficult to sell or realize those investments, similarly it may prove difficult to obtain reliable information about the value, or risks, to which such an investment is exposed.

This report may provide the addresses of websites or references. We have not reviewed any such site and takes no responsibility for the content contained therein. Such address or reference is provided solely for convenience and information. Accessing such website through this report shall be at the recipients own risk.