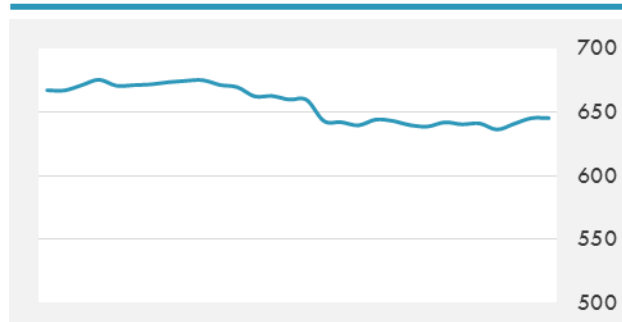
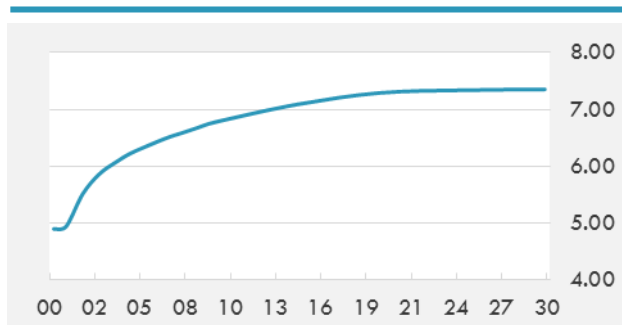


BEIRUT STOCK EXCHANGE

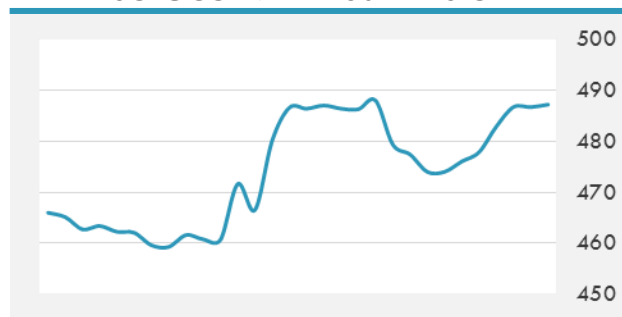
	Last	Daily %	YTD %	Dividend %
Development and Reconstruction				
Solidere A	7.85	2.48%	-24.37%	1.26%
Solidere B	7.54	2.86%	-28.19%	1.31%
Solidere GDR	7.6	0.00%	-24.00%	1.30%
Banking				
Audi Listed	6.2	0.00%	-8.82%	8.04%
BLC Listed	0.99	0.00%	0.00%	0.00%
BOB Listed	18.8	0.00%	0.00%	3.52%
Byblos Listed	1.63	0.00%	-4.12%	8.12%
BEMO Listed	1.64	0.00%	-3.53%	3.27%
BLOM Listed	11.26	-0.35%	6.23%	8.80%
Trading				
RYMCO	3.25	0.00%	0.00%	3.69%
Industrial				
Holcim	12.5	0.00%	6.38%	6.42%
Ciments Blancs	1.62	0.00%	3.18%	0.00%

MSCI LEBANON INDEX - 30 DAYS CHART

LEBANESE USD SOVEREIGN CURVE


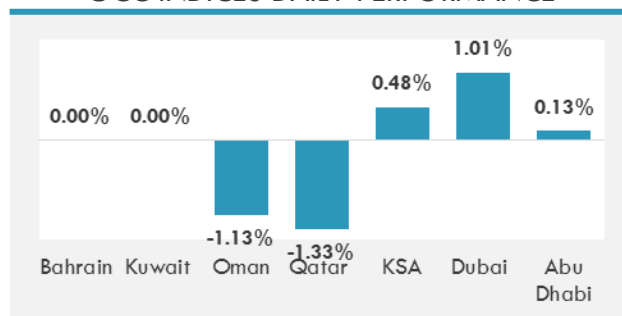
- Liban Cables inaugurated Friday a new 601 KW-peak solar power system to replace one of its 7 electric diesel generators with photovoltaic panels, said a statement issued by the company.
- The branch manager of a medium-size bank has fled the country after scamming customers out of more than \$13 million, the chairman of the bank confirmed Friday.
- After more than two years of uncertainty, there is good news in Lebanon: The country has a new president, a national unity government and there's hope for a better political environment to address long-standing issues.

GCC EQUITY INDICES

	Last Price	Daily %	YTD %
Bahrain	1317.38	0.00%	7.67%
Kuwait	6788.48	0.00%	18.45%
Oman	5063.76	-1.13%	-12.43%
Qatar	9343.57	-1.33%	-10.47%
KSA	7348.76	0.48%	1.92%
Dubai	3573	1.01%	1.19%
Abu Dhabi	4524	0.13%	-0.49%

MSCI GCC INDEX - 30 DAYS CHART

LOCAL/GCC FOREIGN EXCHANGE

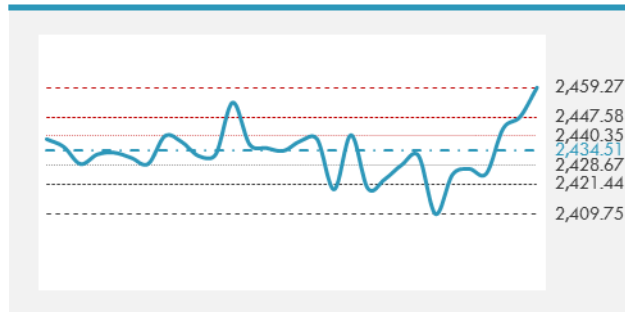
	Cross	Last Price
Lebanese Pound Spot	USD/LBP	1514
Bahraini Dinar Spot	USD/BHD	0.37718
Kuwaiti Dinar Spot	USD/KWD	0.30288
Omani Rial Spot	USD/OMR	0.38502
Qatari Riyal Spot	USD/QAR	3.71
Saudi Riyal Spot	USD/SAR	3.7503
UAE Dirham Spot	USD/AED	3.673

GCC INDICES DAILY PERFORMANCE


UNITED STATES EQUITY MARKET INDICES

	Last Price	Daily %	YTD %	Δ10D Vol
Major Indices				
Dow Jones	21637.74	0.39%	9.49%	0.10%
S&P 500	2459.27	0.47%	9.85%	0.21%
Nasdaq	6312.465	0.61%	17.26%	0.00%
Sectors Indices				
Discretionary	717.53	0.28%	10.76%	-0.34%
Staples	564.15	0.74%	6.09%	1.43%
Energy	481.78	0.54%	-13.11%	0.12%
Financials	412.9	-0.52%	6.82%	0.57%
Healthcare	925.82	0.64%	16.18%	0.49%
Industrials	593.52	0.47%	10.31%	-0.44%
IT	981.08	0.89%	21.43%	-0.07%
Materials	346.31	0.50%	10.94%	0.03%
Telecom	149.14	0.24%	-15.56%	-0.10%
Utilities	263.52	0.54%	6.76%	0.81%
Real Estate	198.92	1.06%	4.57%	1.16%

S&P 500 INDEX - 30 DAYS CHART

S&P 500 SUPPORT & RESISTANCE


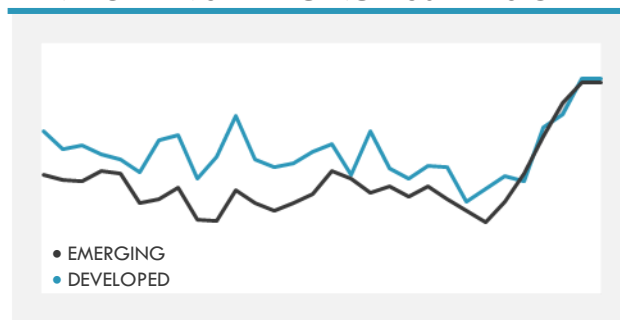
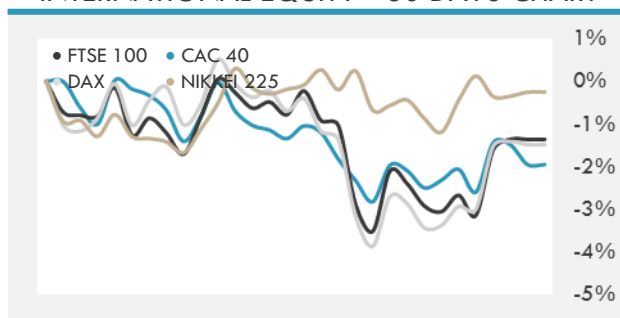
- U.S. stocks held steady as investors assessed June inflation figures and earnings from Wall Street banks.
- European stocks were little changed as banks dropped after their U.S. counterparts reported weaker trading revenues, countering gains in commodity shares.
- Asia's benchmark index rises 0.2% Monday, extending its advance after a late Friday evening rally, to reach its highest level since January 2008 on optimism interest rates will stay lower for longer after U.S.

INTERNATIONAL MARKETS INDICES

	Last Price	Daily %	YTD %	Δ10D Vol
World	1158.05	0.58%	12.32%	0.41%
Developed	1948.07	0.57%	11.24%	0.46%
Emerging	1047.05	0.61%	21.43%	0.10%
Frontier	2732.51	-0.07%	12.99%	-0.16%
Europe	130.59	0.16%	6.61%	-1.30%
Latin America	2714.25	1.00%	15.96%	0.13%
Asia Pacific	157.43	0.76%	16.58%	0.25%

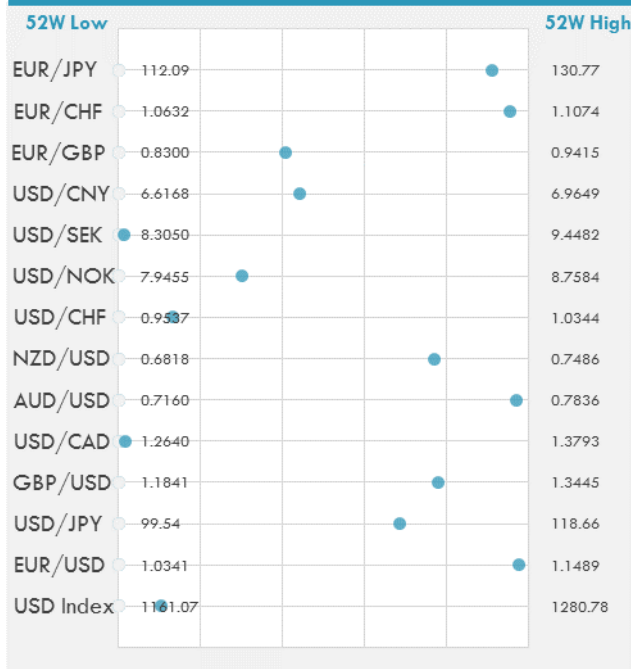
INTERNATIONAL EQUITY INDICES

	Last Price	Daily %	YTD %	Δ10D Vol
EuroStoxx 50	3525.94	-0.05%	7.15%	-2.28%
FTSE 100	7378.39	-0.47%	3.30%	-0.61%
CAC 40	5235.31	0.00%	7.67%	-2.30%
DAX	12631.72	-0.08%	10.02%	-1.46%
Swiss SMI	9034.57	0.34%	9.91%	-1.37%
Nikkei 225	20118.86	0.00%	5.26%	-0.01%
CSI 300	3702.47	-0.02%	11.85%	-0.32%

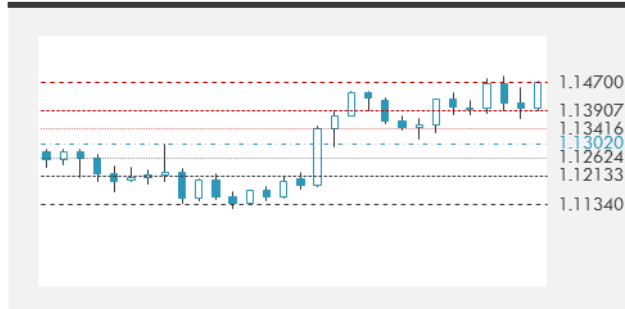
DEVELOPED VS EMERGING - 30 DAYS CHART

INTERNATIONAL EQUITY - 30 DAYS CHART


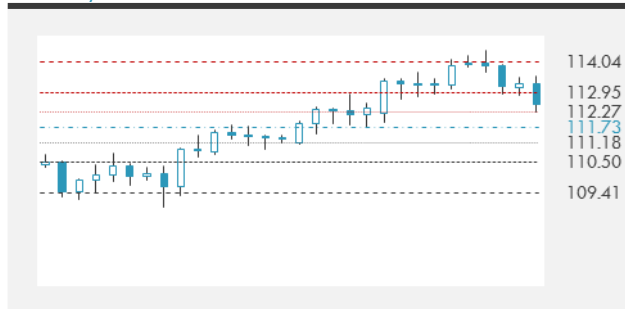
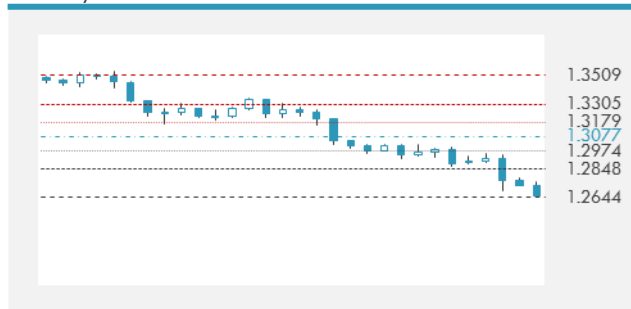
FOREIGN EXCHANGE MARKET

	Last Price	Daily %	Δ10D	Vol 25	ΔRR
Major USD Cross Rate					
USD Index	1173.54	0.09%	0.14%	-	
EUR/USD	1.1461	-0.08%	-0.09%	0.408	
USD/JPY	112.65	0.11%	0.08%	-0.998	
GBP/USD	1.3091	-0.05%	-0.10%	-0.315	
USD/CAD	1.2659	0.12%	0.17%	0.265	
AUD/USD	0.7816	-0.20%	-1.43%	-0.115	
NZD/USD	0.7332	-0.20%	0.12%	-0.080	
USD/CHF	0.9644	0.09%	-0.11%	-0.343	
USD/NOK	8.1907	0.05%	0.17%	0.043	
USD/SEK	8.3184	0.12%	-0.88%	-0.018	
USD/CNY	6.7701	-0.08%	-0.02%	0.315	
Major EUR Cross Rate					
EUR/GBP	0.87544	0.00%	0.00%	0.388	
EUR/CHF	1.10525	0.02%	-0.01%	0.485	
EUR/JPY	129.1	0.02%	-0.15%	-0.453	

DISTANCE FROM 52 WEEKS LOW/HIGH


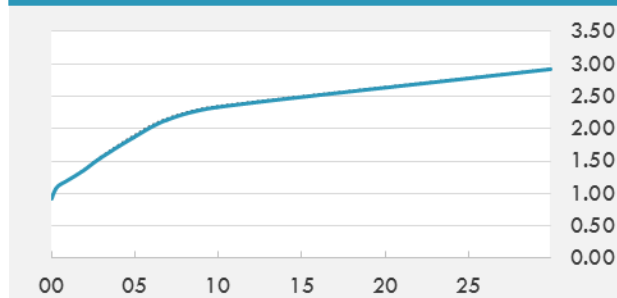
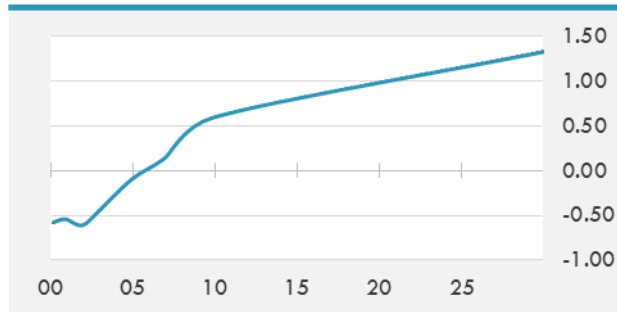
- The onshore yuan rose for the sixth day in a row, the longest run of gains since 2015, boosted by a stronger central bank fixing and data showing China's economy held up in the second quarter.
- The U.S. dollar trades near a 10-month low following Friday's dismal inflation and retail sales data. New Zealand's currency declines after the central bank deputy governor says a weaker kiwi would help growth.

EUR/USD 30 DAYS SUPPORT & RESISTANCE

GBP/USD 30 DAYS SUPPORT & RESISTANCE

USD/JPY 30 DAYS SUPPORT & RESISTANCE

USD/CAD 30 DAYS SUPPORT & RESISTANCE


GLOBAL BOND INDICES

	Yield	ΔYield (in Bps)
Benchmark Indices		
US 10 Years Benchmark	2.3319	-0.012
EU 10 Years Benchmark	0.597	-0.006
UK 10 Years Benchmark	1.31	0.008
Sovereign Bonds		
US Treasury Bond	1.881	-0.018
Eurozone Sovereign Bond	0.743	-0.011
U.K. Sovereign Bond	1.245	0.007
Japan Sovereign Bond	0.156	0.001
USD Emerging Sovereign Bond	4.672	-0.032
Corporate Bonds		
US Investment Grade Bond	3.18	-0.023
US High Yield Bond	5.715	-0.049
EUR Investment Grade Bond	0.757	-0.006
EUR High Yield Bond	2.523	0.015
USD Emerging Market IG & HY	4.747	-0.019

US TREASURIES YIELD CURVE

EUR GENERIC YIELD CURVE


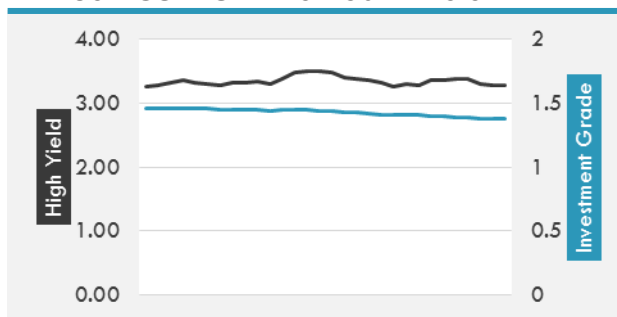
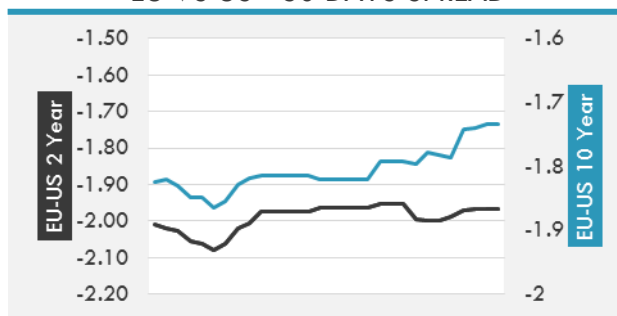
- Treasuries ended off best levels of the session after EGB's and notably gilts weighed into European close; muted afternoon session saw 10Y futures ply just 2-tick range into 3pm ET close, while curve held early steepening bias.
- German bonds closed slightly lower after initially squeezing; bunds were initially boosted by early covering demand and soft U.S. CPI data, before sliding into the close, weighed by gilts.

OVERNIGHT RATES - SWAPS

	Yield	ΔYield (in Bps)
3M USD LIBOR	1.30361	0.0000
3M EUR EURIBOR	-0.331	0.0000
3M GBP LIBOR	0.29344	-0.0025
3Y USD SWAP	1.7243	-0.0161
5Y USD SWAP	1.9303	-0.0235
10Y USD SWAP	2.2815	-0.0135
30Y USD SWAP	2.581	0.0041

FIXED INCOME SPREADS

	Spread	ΔSpread (in Bps)
USD 3M vs 10Y Spread	1.29519	(0.0124)
USD 2Y vs 10Y Spread	0.97223	(0.0048)
USD IG Spread	1.38	-
USD HY Spread	3.28	(0.0300)
EU vs US 10Y Spread	-1.7353	0.0082
EU vs US 2Y Spread	-1.967	0.0006
EM vs Benchmark Spread	250.3	0.500

USD CORPORATES - 30 DAYS SPREAD

EU VS US - 30 DAYS SPREAD


GLOBAL COMMODITIES MARKET

	Last Price	Daily %
Commodity Index	82.70	0.96%

Energy

WTI Crude Future	46.54	1.00%
Brent Crude Future	48.91	1.01%
NYMEX Gasoline	156.05	2.25%
NYMEX Heat Oil	151.5	1.56%
ICE Gasoil	447.75	1.02%
NYMEX Natural Gas	2.98	0.64%

Precious Metals

Gold Spot \$/Oz	1228.7	0.91%
Silver Spot \$/Oz	15.99	1.83%
Platinum Spot \$/Oz	921.28	1.71%
Palladium Spot \$/Oz	860.57	0.27%
Gold Future	1227.5	0.84%
Silver Future	15.933	1.54%
Platinum Future	923.5	1.81%
Palladium Future	856.75	0.23%

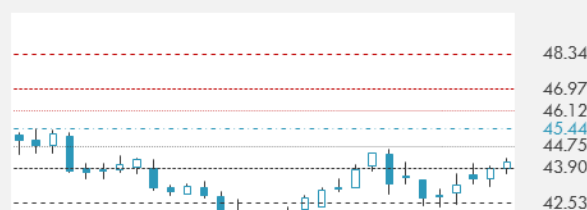
Base Metals

LME Aluminum	1927	0.21%
LME Copper	5926	0.85%
LME Zinc	2786	-0.62%
LME Nickel	9575	3.96%
LME Lead	2316	0.96%
LME Tin	19810	0.03%

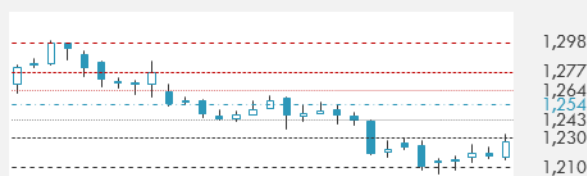
Agricultural

Corn CBT	376.25	1.76%
Wheat CBT	510.75	-0.20%
Soybeans CBT	1001.5	1.42%
Bean Meal CBT	331.2	1.88%
Rough Rice CBT	11.675	-0.68%
MDE Palm Oil	2568	0.43%
Soybean CBT	33.68	0.54%
Coffee ICE	133.7	1.91%
Sugar #11 ICE	14.3	1.13%
Cotton #2 ICE	66.58	0.32%
Cocoa ICE	1915	2.30%
Ethanol CME	1.538	1.72%
Lumber CME	377.3	2.69%
Orange Juice ICE	126.9	-1.59%
Live Cattle CME	118.575	0.64%
Feeder Cattle CME	154.275	0.82%
Lean Hogs CME	67.175	-3.10%

COMMODITY INDEX SUPPORT & RESISTANCE

WTI OIL 30 DAYS SUPPORT & RESISTANCE


- Oil held gains above \$46 a barrel as optimism that demand will help shrink supplies outweighed an increase in U.S. rigs drilling for crude.
- Gold climbs for second day after U.S. data showed little change in inflation and a drop in retail sales.

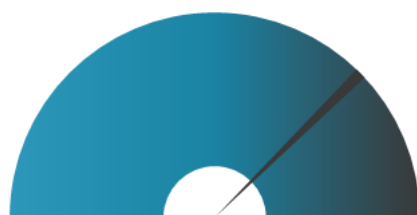
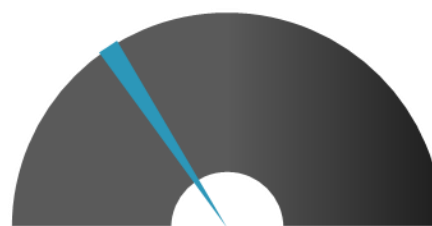
GOLD 30 DAYS SUPPORT & RESISTANCE

SILVER 30 DAYS SUPPORT & RESISTANCE


TOP 10 WINNERS

	Ticker	Last Price	Daily %
S&P 500 Stocks			
NETAPP INC	NTAP	43.64	5.46
NRG ENERGY	NRG	23.24	4.68
SEAGATE TECHNOLO	STX	39.5	3.08
ADV MICRO DEVICE	AMD	13.92	2.88
GGP INC	GGP	23.59	2.88
ZIMMER BIOMET HO	ZBH	132.49	2.72
NVIDIA CORP	NVDA	164.95	2.69
NEWS CORP-CL A	NWSA	13.57	2.57
TRANSDIGM GROUP	TDG	282.14	2.49
IRON MOUNTAIN	IRM	34.78	2.47

TOP 10 LOSERS

	Ticker	Last Price	Daily %
S&P 500 Stocks			
F5 NETWORKS	FFIV	123.84	-3.47
WYNN RESORTS LTD	WYNN	130.42	-3.38
XILINX INC	XLNX	66.25	-2.36
H&R BLOCK INC	HRB	30.53	-2.3
CME GROUP INC	CME	120.57	-2.29
TIFFANY & CO	TIF	91.9	-2.28
AUTONATION INC	AN	42.01	-2.07
INTERCONTINENTAL	ICE	65.55	-1.99
BANK OF AMERICA	BAC	24.21	-1.67
CITIZENS FINANCI	CFG	36.24	-1.66

S&P 500 DISTRIBUTION

WINNERS
LOSERS
S&P VOLATILITY INDEX

LOW VOLATILITY
HIGH VOLATILITY

- UBER seems to have met its match in Russia, merging its business with local competitor Yandex, commonly referred to as the "Google of Russia."
- AT&T is planning major organizational changes to follow its \$85.4B acquisition of Time Warner.
- Latest auto problems... Fiat Chrysler is calling back 1.33M vehicles worldwide for potential fire risks and inadvertent airbag deployments.
- Snap underwriter Cowen downgrades the company to Market Perform and reduces the price target from \$21 to \$17, which is the IPO price.
- The Verge reports that the price for the Oculus Rift bundle will go up to \$499 once the current sale ends, which still offers about \$100 off the standard price.
- Samsung launches a Game Live app that allows users to live-stream up to 200 minutes of high-resolution mobile gameplay.
- Google officially announces the New Release Radio station on Google Play Music, which was previously only available to Samsung users.
- The Korea Herald reports that Apple spent "tens of millions of dollars" to purchase production equipment to avoid delays in iPhone 8 circuit boards.
- Exxon Mobil is fined \$165K by U.S. regulators for safety lapses related to an explosion that injured four workers at an aging Baton Rouge, La., refinery last year.
- Pepsi's Q2 results showed weakness in beverages, which could foreshadow bad news for Coca-Cola since the latter is much more dependent on beverages than its rival

KEY ECONOMIC INDICATORS

Country	Event	Surv(M)	Actual	Prior	Time
Bahrain	M1 Money Supply YoY	--	--	--	
Bahrain	M2 Money Supply YoY	--	--	--	
Bahrain	M3 Money Supply YoY	--	--	--	
Canada	Int'l Securities Transactions	--	--	10.60b	15:30
China	GDP YoY	6.80%	6.90%	6.90%	5:00
China	Industrial Production YoY	6.50%	7.60%	6.50%	5:00
China	Retail Sales YoY	10.60%	11.00%	10.70%	5:00
China	Industrial Production YTD YoY	6.70%	6.90%	6.70%	5:00
China	GDP YTD YoY	6.80%	6.90%	6.90%	5:00
China	Fixed Assets Ex Rural YTD YoY	8.50%	8.60%	8.60%	5:00
China	Retail Sales YTD YoY	10.30%	10.40%	10.30%	5:00
China	GDP SA QoQ	1.70%	1.70%	1.30%	5:00
Eurozone	CPI YoY	1.30%	--	1.40%	12:00
Eurozone	CPI MoM	0.00%	--	-0.10%	12:00
Eurozone	CPI Core YoY	1.10%	--	1.10%	12:00
Oman	Nominal GDP YTD YoY	--	--	-5.10%	
Russia	Industrial Production YoY	3.50%	--	5.60%	
United Kingdom	Rightmove House Prices MoM	--	0.10%	-0.40%	2:01
United Kingdom	Rightmove House Prices YoY	--	2.80%	1.80%	2:01
United States	Empire Manufacturing	15	--	19.8	15:30

Banque BEMO sal
Head Office - Private and Corporate Banking

96 Pasteur Building, Pasteur Street, Medawar Area, P.O. Box: 16-6353, Beirut - Lebanon
Tel: + 961 1 568 250 Fax: + 961 1 568 266

Investment & Research research@bemobank.com

Beirut Central District Riad El Solh Square, Esseily Building Bloc A, 7th Floor Beirut - Lebanon
Tel: + 961 1 992 600 Fax: + 961 1 983 368
www.bemobank.com

Disclaimer:

This report is published for information purposes only. The information herein has been compiled from, or based upon sources considered to be reliable (Bloomberg, SeekingAlpha, DailyStar...), but we do not guarantee or assume responsibility for its completeness and accuracy. This document should not be construed as a solicitation to take part in any investment, or as constituting any representation or warranty on our part. This report is not to be relied upon in substitution for the exercise of specialists.

We may not have taken any steps to ensure that the securities referred to in this report are suitable for any particular investor. The investments and services contained or referred to herein are not purported to be exhaustive, any person considering an investment should seek specialist advice on the suitability of an investment.

Nothing in this report constitutes investment, legal, accounting or tax advice, or a representation that any investment or strategy is suitable or appropriate to your individual circumstances, or otherwise constitutes a personal recommendation. Clients understand that it is their responsibility to seek legal and/or tax advice regarding the legal and tax consequences of their investment transactions. The consequences of any action taken on the basis of information contained herein are solely the responsibility of the recipient.

Investment instruments are subject to risk, including possible loss of principal amount invested. Past performance should not be taken as an indication or guarantee of future performance, and no representation or warranty, express or implied, is made regarding future performance. The value of securities and financial instruments is subject to exchange rate fluctuation that may have a positive or adverse effect on the price or income of such securities or financial instruments. Some investments mentioned in this report may have a high level of volatility. High volatility investments may experience sudden and large falls in their value causing losses when that investment is realized. Some investments may not be readily realizable and it may be difficult to sell or realize those investments, similarly it may prove difficult to obtain reliable information about the value, or risks, to which such an investment is exposed.

This report may provide the addresses of websites or references. We have not reviewed any such site and takes no responsibility for the content contained therein. Such address or reference is provided solely for convenience and information. Accessing such website through this report shall be at the recipients own risk.