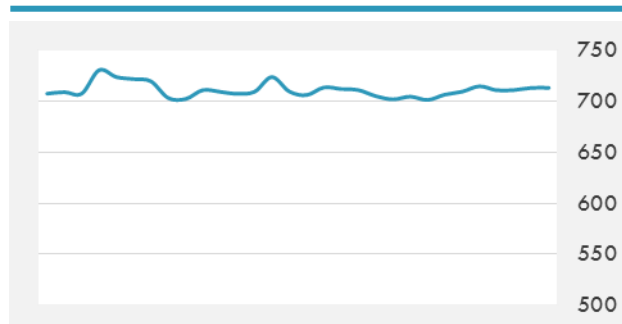
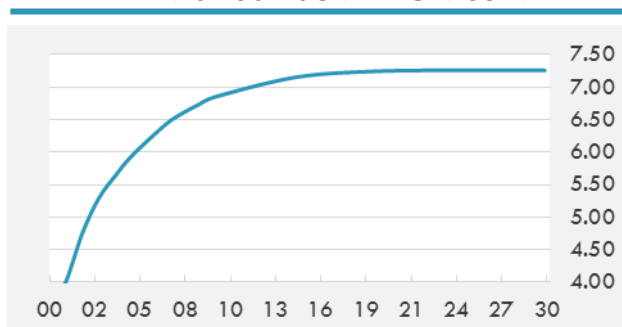


BEIRUT STOCK EXCHANGE

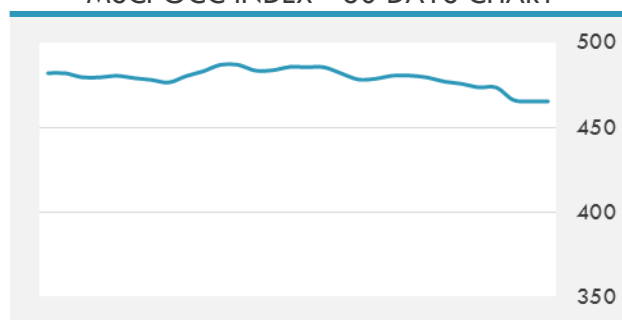
	Last	Daily %	YTD %	Dividend %
Development and Reconstruction				
Solidere A	9.16	0.66%	-11.75%	1.08%
Solidere B	9	-1.21%	-14.29%	1.10%
Solidere GDR	9.23	-2.64%	-7.70%	1.07%
Banking				
Audi Listed	6.89	1.32%	1.32%	5.80%
BLC Listed	0.99	0.00%	0.00%	0.00%
BOB Listed	18.8	0.00%	0.00%	3.17%
Byblos Listed	1.74	0.00%	2.35%	7.67%
BEMO Listed	1.7	0.00%	0.00%	2.33%
BLOM Listed	11.9	0.00%	12.26%	6.97%
Trading				
RYMCO	3.25	0.00%	0.00%	3.69%
Industrial				
Holcim	11.11	0.00%	-5.45%	7.37%
Ciments Blancs	1.57	0.00%	0.00%	0.00%

MSCI LEBANON INDEX - 30 DAYS CHART

LEBANESE USD SOVEREIGN CURVE


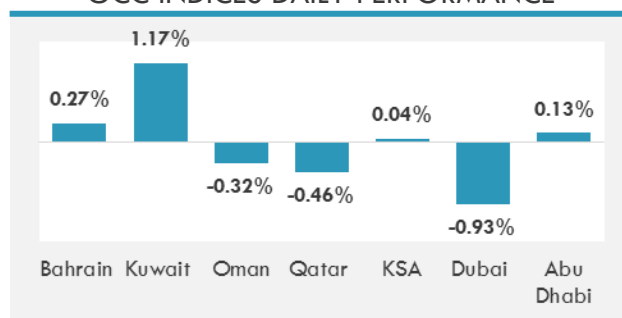
- The Economy and Trade Ministry has put the final touches on a draft law that will encourage insurance companies to merge by giving them subsidized loans, Economy and Trade Minister Raed Khoury said Tuesday.
- If all the reforms outlined in the fiscal balance program are implemented within the set timeline, Saudi Arabia could achieve a budget surplus by 2019, said a report issued by Al-Rajhi Capital.

GCC EQUITY INDICES

	Last Price	Daily %	YTD %
Bahrain	1374.57	0.27%	12.95%
Kuwait	6790.4	1.17%	18.53%
Oman	5697.61	-0.32%	-1.64%
Qatar	10314.2	-0.46%	-1.10%
KSA	6790.71	0.04%	-5.67%
Dubai	3468.58	-0.93%	-1.57%
Abu Dhabi	4387.96	0.13%	-3.45%

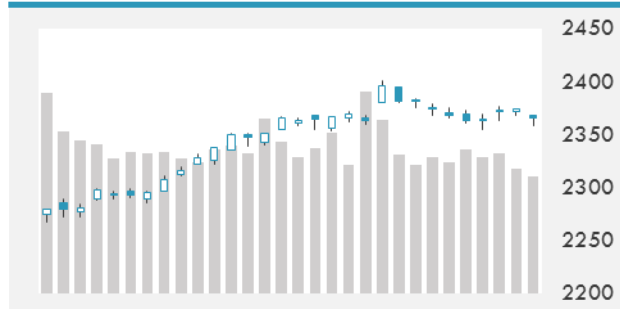
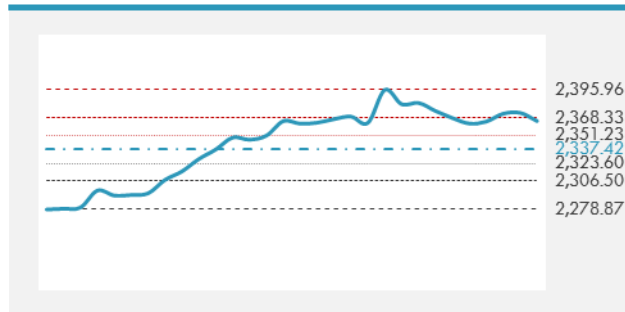
MSCI GCC INDEX - 30 DAYS CHART

LOCAL/GCC FOREIGN EXCHANGE

	Cross	Last Price
Lebanese Pound Spot	USD/LBP	1509.25
Bahraini Dinar Spot	USD/BHD	0.37702
Kuwaiti Dinar Spot	USD/KWD	0.3055
Omani Rial Spot	USD/OMR	0.385
Qatari Riyal Spot	USD/QAR	3.6412
Saudi Riyal Spot	USD/SAR	3.7502
UAE Dirham Spot	USD/AED	3.673

GCC INDICES DAILY PERFORMANCE


UNITED STATES EQUITY MARKET INDICES

	Last Price	Daily %	YTD %	Δ10D Vol
Major Indices				
Dow Jones	20837.37	-0.21%	5.44%	-5.70%
S&P 500	2365.45	-0.34%	5.66%	-4.51%
Nasdaq	5856.816	-0.32%	8.80%	-3.63%
Sectors Indices				
Discretionary	691.34	0.02%	6.72%	-3.04%
Staples	562.96	-0.17%	5.86%	-0.64%
Energy	504.73	-1.11%	-8.98%	-4.81%
Financials	410.46	-0.12%	6.19%	-9.46%
Healthcare	872.18	-0.33%	9.44%	-1.65%
Industrials	558	-0.91%	3.70%	-4.21%
IT	896.32	-0.25%	10.94%	-3.94%
Materials	324.68	-0.82%	4.01%	-5.23%
Telecom	169.6	-0.49%	-3.97%	0.03%
Utilities	257.37	-0.09%	4.27%	-1.05%
Real Estate	189.09	-0.15%	-0.60%	0.18%

S&P 500 INDEX - 30 DAYS CHART

S&P 500 SUPPORT & RESISTANCE


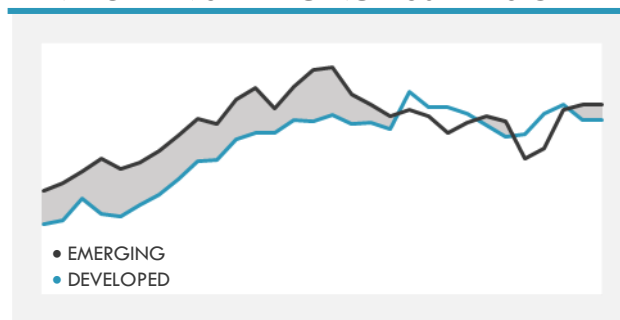
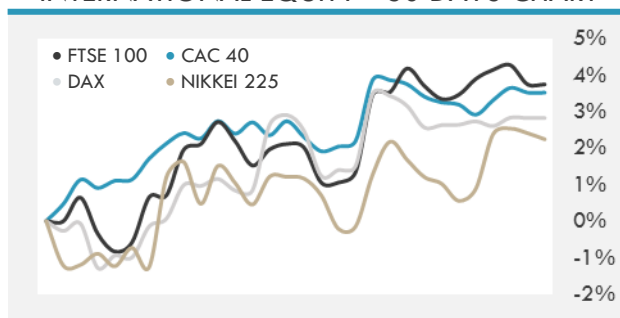
- U.S. stocks declined ahead of the Federal Reserve's interest-rate decision today as lower oil prices weighed on energy companies.
- European stocks fell in a broad decline as traders were cautious before the Dutch elections and a Federal Reserve meeting on Wednesday.
- Asian stocks followed their U.S. counterparts lower as investors awaited the Federal Reserve's rate decision. Oil whipsawed amid reports of increased production in Saudi Arabia and lower inventories in the U.S.

INTERNATIONAL MARKETS INDICES

	Last Price	Daily %	YTD %	Δ10D Vol
World	1089.18	-0.32%	5.64%	-1.84%
Developed	1842.98	-0.38%	5.24%	-2.06%
Emerging	939.97	0.16%	9.01%	-0.03%
Frontier	2544.05	-0.19%	5.20%	0.13%
Europe	126.34	-0.32%	3.14%	-4.86%
Latin America	2538.26	-1.13%	8.44%	0.10%
Asia Pacific	145.68	0.12%	7.88%	-0.15%

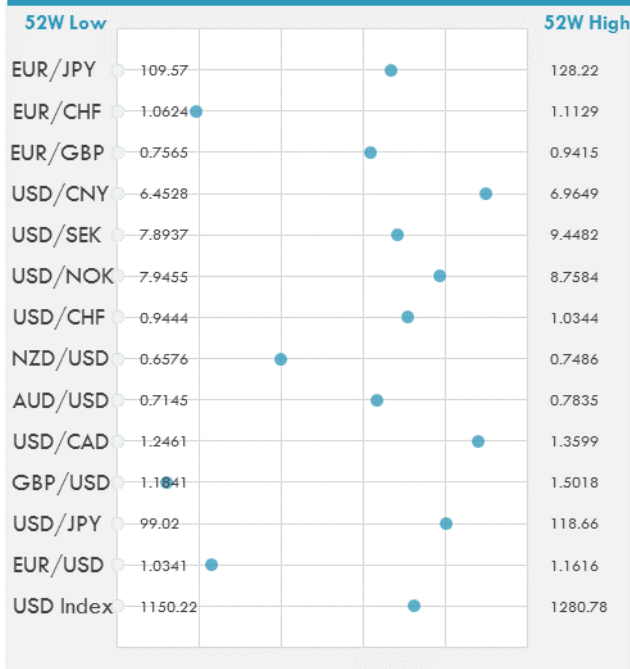
INTERNATIONAL EQUITY INDICES

	Last Price	Daily %	YTD %	Δ10D Vol
EuroStoxx 50	3399.43	-0.47%	3.31%	-5.90%
FTSE 100	7357.85	-0.13%	3.01%	-5.79%
CAC 40	4974.26	-0.51%	2.30%	-5.63%
DAX	11988.79	-0.01%	4.42%	-7.76%
Swiss SMI	8663.54	-0.22%	5.40%	-2.29%
Nikkei 225	19577.38	-0.16%	2.42%	-1.88%
CSI 300	3463.64	0.20%	4.64%	-0.05%

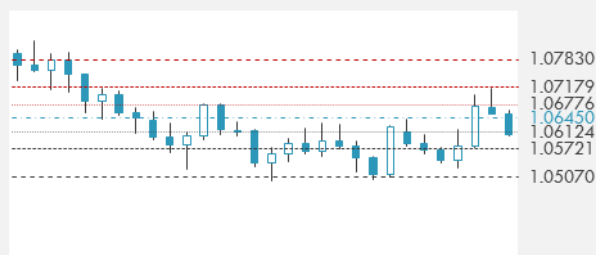
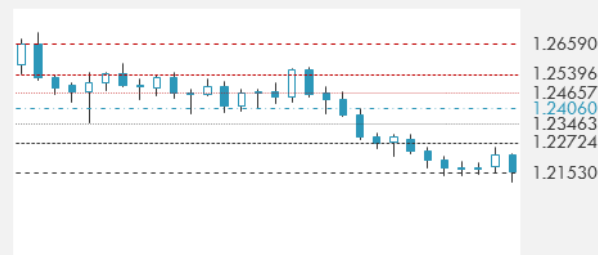
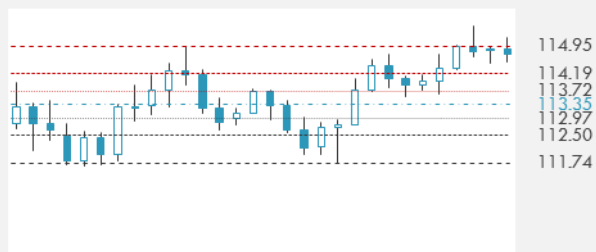
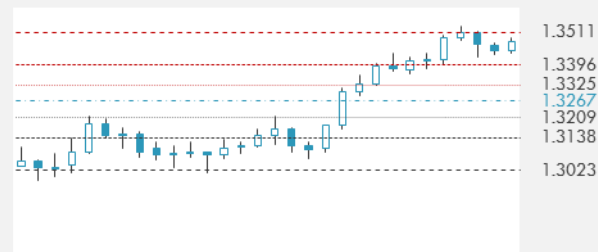
DEVELOPED VS EMERGING - 30 DAYS CHART

INTERNATIONAL EQUITY - 30 DAYS CHART


FOREIGN EXCHANGE MARKET

	Last Price	Daily %	Δ10D	Vol 25	ΔRR
Major Indices					
USD Index	1244.91	-0.21%	-0.66%	-	
EUR/USD	1.0627	0.22%	-0.37%	-0.098	
USD/JPY	114.73	-0.02%	-0.96%	-0.403	
GBP/USD	1.2221	0.56%	1.16%	-0.408	
USD/CAD	1.346	-0.14%	-0.38%	0.143	
AUD/USD	0.7578	0.25%	-3.12%	-0.635	
NZD/USD	0.6938	0.27%	-1.14%	-0.530	
USD/CHF	1.0081	-0.21%	-0.54%	-0.153	
USD/NOK	8.5902	-0.27%	-0.36%	0.223	
USD/SEK	8.9558	-0.17%	-0.47%	0.555	
USD/CNY	6.9134	-0.02%	0.00%	-0.140	
Major EUR Cross Rate					
EUR/GBP	0.86964	-0.33%	0.29%	0.358	
EUR/CHF	1.0714	0.02%	0.01%	-0.433	
EUR/JPY	121.93	0.21%	0.00%	-0.235	

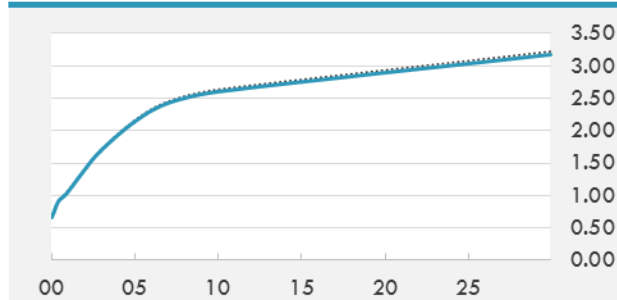
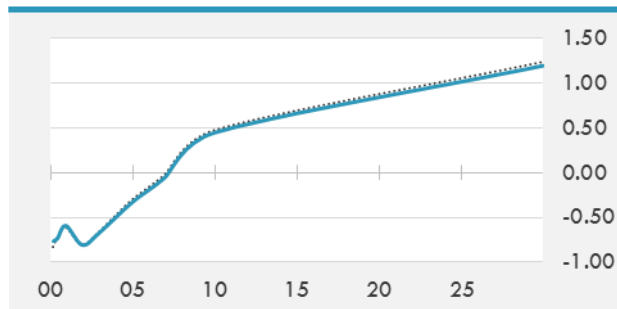
DISTANCE FROM 52 WEEKS LOW/HIGH


- The pound led a rally against the dollar in early European trading, retracing the loss from Tuesday, as fixing-related demand triggered stop-loss orders.
- Yuan sentiment is calm ahead of the U.S. Federal Reserve policy meeting on Wednesday as the People's Bank of China keeps the daily reference rate steady and Yuan volatility falls to the lowest in more than a year.
- The dollar edged higher as traders mulled whether the FOMC will signal a quicker pace of monetary-policy tightening when it meets at a two-day gathering that ends Wednesday.

EUR/USD 30 DAYS SUPPORT & RESISTANCE

GBP/USD 30 DAYS SUPPORT & RESISTANCE

USD/JPY 30 DAYS SUPPORT & RESISTANCE

USD/CAD 30 DAYS SUPPORT & RESISTANCE


GLOBAL BOND INDICES

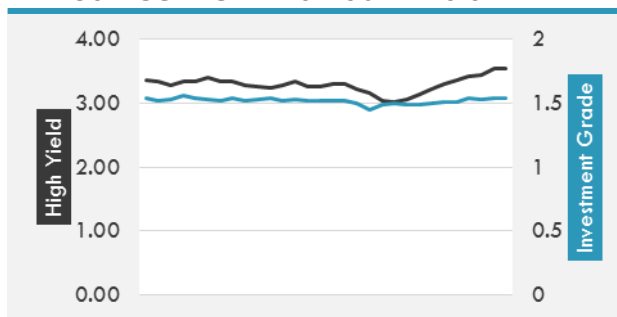
	Yield	ΔYield (in Bps)
Benchmark Indices		
US 10 Years Benchmark	2.6002	-0.026
EU 10 Years Benchmark	0.445	-0.026
UK 10 Years Benchmark	1.224	-0.023
Sovereign Bonds		
US Treasury Bond	2.069	-0.005
Eurozone Sovereign Bond	0.81	-0.013
U.K. Sovereign Bond	1.102	-0.016
Japan Sovereign Bond	0.109	-0.003
USD Emerging Sovereign Bond	4.921	0.038
Corporate Bonds		
US Investment Grade Bond	3.511	0.005
US High Yield Bond	6.191	0.081
EUR Investment Grade Bond	0.802	-0.014
EUR High Yield Bond	3.019	0.069
USD Emerging Market IG & HY	5.05	0.04

US TREASURIES YIELD CURVE

EUR GENERIC YIELD CURVE


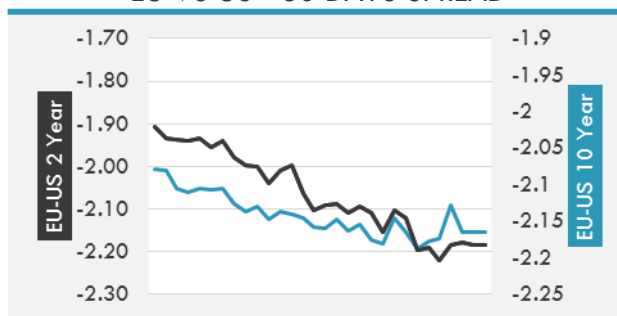
- The Bank of Japan's regular bond-purchase operations drew higher bid-to-cover ratios for most maturities than they did last week as investors awaited key central bank decisions.
- Even though Fed rate increases should send Treasury yields up, it looks more likely the opposite is going to happen following the expected central bank rate rise Wednesday.
- Bund futures push higher, as WTI crude and European stocks slide following monthly OPEC report that showed Saudi Arabia reversed some of its production cuts.

OVERNIGHT RATES - SWAPS

	Yield	ΔYield (in Bps)
3M USD LIBOR	1.13122	0.0000
3M EUR EURIBOR	-0.33	0.0000
3M GBP LIBOR	0.34375	0.0000
3Y USD SWAP	1.9376	-0.0085
5Y USD SWAP	2.2273	-0.0113
10Y USD SWAP	2.5713	-0.0274
30Y USD SWAP	2.7976	-0.0376

USD CORPORATES - 30 DAYS SPREAD

FIXED INCOME SPREADS

	Spread	ΔSpread (in Bps)
USD 3M vs 10Y Spread	1.83328	(0.0460)
USD 2Y vs 10Y Spread	1.218	(0.0318)
USD IG Spread	1.54	0.0100
USD HY Spread	3.54	0.1000
EU vs US 10Y Spread	-2.1548	(0.0004)
EU vs US 2Y Spread	-2.1851	(0.0049)
EM vs Benchmark Spread	258.9	2.700

EU VS US - 30 DAYS SPREAD


GLOBAL COMMODITIES MARKET

	Last Price	Daily %
Commodity Index	83.90	-0.55%

Energy

WTI Crude Future	47.72	-1.40%
Brent Crude Future	50.92	-0.84%
NYMEX Gasoline	158.35	0.18%
NYMEX Heat Oil	149.19	-0.58%
ICE Gasoil	448	-1.59%
NYMEX Natural Gas	2.938	-3.45%

Precious Metals

Gold Spot \$/Oz	1199.12	-0.43%
Silver Spot \$/Oz	16.8843	-0.56%
Platinum Spot \$/Oz	937.72	-0.22%
Palladium Spot \$/Oz	742.44	-1.68%
Gold Future	1202.6	-0.04%
Silver Future	16.923	-0.29%
Platinum Future	938.9	-0.24%
Palladium Future	741.7	-1.69%

Base Metals

LME Aluminum	1860	-1.12%
LME Copper	5820	0.41%
LME Zinc	2750	0.20%
LME Nickel	10230	0.59%
LME Lead	2224	-2.26%
LME Tin	19970	2.67%

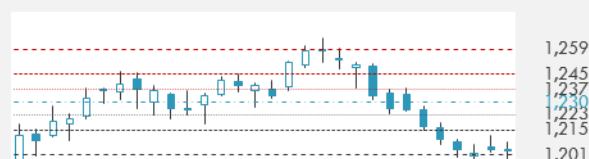
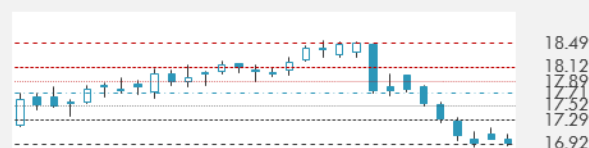
Agricultural

Corn CBT	362.25	0.35%
Wheat CBT	430.5	0.00%
Soybeans CBT	999.25	-0.67%
Bean Meal CBT	327.2	-1.12%
Rough Rice CBT	9.735	-1.02%
MDE Palm Oil	2752	1.07%
Soybean CBT	32.3	0.56%
Coffee ICE	141.25	-0.77%
Sugar #11 ICE	18.16	-0.11%
Cotton #2 ICE	77.15	0.36%
Cocoa ICE	2058	2.03%
Ethanol CME	1.519	-0.91%
Lumber CME	359.5	-0.06%
Orange Juice ICE	175.3	1.45%
Live Cattle CME	106.9	-1.11%
Feeder Cattle CME	126.525	-0.37%
Lean Hogs CME	79.175	0.57%

COMMODITY INDEX SUPPORT & RESISTANCE

WTI OIL 30 DAYS SUPPORT & RESISTANCE


- Oil rebounded above \$48 a barrel as a reported decline in U.S. crude stockpiles countered a boost in output from Saudi Arabia.
- Gold gained some traction and was seen building on to its recovery back above the key \$1200 psychological mark.

GOLD 30 DAYS SUPPORT & RESISTANCE

SILVER 30 DAYS SUPPORT & RESISTANCE


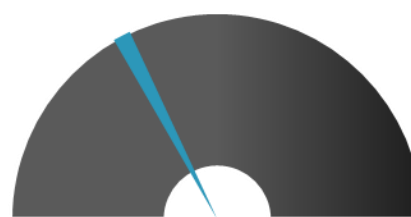
TOP 10 WINNERS

	Ticker	Last Price	Daily %
S&P 500 Stocks			
WESTERN UNION	WU	20.27	3.52
MOTOROLA Solutio	MSI	83.36	2.09
GOODYEAR TIRE	GT	36.41	1.70
KIMCO REALTY	KIM	22.19	1.56
EXTRA SPACE STOR	EXR	74.13	1.20
NEWS CORP-CL B	NWS	12.7	1.20
STAPLES INC	SPLS	8.67	1.17
MID-AMERICA APAR	MAA	98.89	1.16
ANALOG DEVICES	ADI	83.68	1.11
WAL-MART STORES	WMT	70.72	1.10

TOP 10 LOSERS

	Ticker	Last Price	Daily %
S&P 500 Stocks			
TRIPADVISOR INC	TRIP	42.26	-2.87
SOUTHWESTRN ENGY	SWN	7.38	-2.89
SOUTHWEST AIR	LUV	52.88	-2.95
CORNING INC	GLW	26.85	-3.10
MARATHON OIL	MRO	15.32	-3.28
ONEOK INC	OKE	52.2	-3.30
CITRIX SYSTEMS	CTXS	82.02	-3.43
ENDO INTERNATIONAL	ENDP	10.22	-4.22
UNITED CONTINENT	UAL	66.55	-4.72
FRONTIER COMMUNI	FTR	2.41	-4.74

S&P 500 DISTRIBUTION

WINNERS
LOSERS
S&P VOLATILITY INDEX

LOW VOLATILITY
HIGH VOLATILITY

- As institutions race to offer digital financial advice, Charles Schwab has launched a service that combines its automated investment management technology with human advisors.
- Grappling with construction delays and a multi-billion writedown, Toshiba is considering the sale of a majority stake in its Westinghouse nuclear unit.
- Facebook has barred software developers from using its data to create surveillance tools, cracking down on a method police departments allegedly used to track protesters and activists.
- Volkswagen investors are gathered in Wolfsburg, Germany today for the automaker's annual meeting.
- Euronet Worldwide proposes to buy MoneyGram International for \$15.20 per share to value the company at more than \$1B, in addition to the assumption of approximately \$940M in debt.
- Tesla plans to open its first showrooms in South Korea this week. The company is using the showrooms in South Korea to promote the S 90D, Model X and Model S -- while all purchases by consumers will be made online.
- Tesla will introduce the Model Y compact crossover on the same platform as the Model 3, according to Autocar.com.
- Introduced to 181 markets spanning 19 languages, Microsoft's Office 365-based Teams offering expands beyond preview, enhancing major contender positioning among the enterprise collaboration software sector.
- Volkswagen CEO Matthias Mueller hints that the company will hear out Fiat Chrysler Automobiles in the future about its rationalization for a possible merger between the auto giants.

KEY ECONOMIC INDICATORS

Country	Event	Surv(M)	Actual	Prior	Time
France	CPI YoY	1.20%	1.20%	1.20%	9:45
France	CPI EU Harmonized YoY	1.40%	1.40%	1.40%	9:45
Italy	CPI EU Harmonized YoY	1.60%	--	1.60%	12:00
Italy	Retail Sales MoM	0.20%	--	-0.50%	11:00
Italy	Retail Sales YoY	0.80%	--	-0.20%	11:00
Japan	Industrial Production MoM	--	-0.40%	-0.80%	6:30
Japan	Industrial Production YoY	--	3.70%	3.20%	6:30
Oman	CPI YoY	--	--	1.79%	
United Kingdom	Jobless Claims Change	--	--	-42.4k	11:30
United Kingdom	Claimant Count Rate	--	--	2.10%	11:30
United States	FOMC Rate Decision (Upper Bound)	1.00%	--	0.75%	20:00
United States	CPI MoM	0.00%	--	0.60%	14:30
United States	DOE U.S. Crude Oil Inventories	3133k	--	8209k	16:30
United States	Retail Sales Advance MoM	0.10%	--	0.40%	14:30
United States	MBA Mortgage Applications	--	--	3.30%	13:00
United States	Empire Manufacturing	15	--	18.7	14:30
United States	CPI Ex Food and Energy MoM	0.20%	--	0.30%	14:30
United States	Net Long-term TIC Flows	--	--	-\$12.9b	22:00
United States	FOMC Interest Rate Decision				20:00
United States	Chairwoman Janet Yellen holds a news...				20:30

Banque BEMO sal

Head Office - Private and Corporate Banking

96 Pasteur Building, Pasteur Street, Medawar Area, P.O. Box: 16-6353, Beirut - Lebanon
Tel: + 961 1 568 250 Fax: + 961 1 568 266

Investment & Research research@bemobank.com

Beirut Central District Riad El Solh Square, Esseily Building Bloc A, 7th Floor Beirut - Lebanon
Tel: + 961 1 992 600 Fax: + 961 1 983 368
www.bemobank.com

Disclaimer:

This report is published for information purposes only. The information herein has been compiled from, or based upon sources considered to be reliable (Bloomberg, SeekingAlpha, DailyStar...), but we do not guarantee or assume responsibility for its completeness and accuracy. This document should not be construed as a solicitation to take part in any investment, or as constituting any representation or warranty on our part. This report is not to be relied upon in substitution for the exercise of specialists.

We may not have taken any steps to ensure that the securities referred to in this report are suitable for any particular investor. The investments and services contained or referred to herein are not purported to be exhaustive, any person considering an investment should seek specialist advice on the suitability of an investment.

Nothing in this report constitutes investment, legal, accounting or tax advice, or a representation that any investment or strategy is suitable or appropriate to your individual circumstances, or otherwise constitutes a personal recommendation. Clients understand that it is their responsibility to seek legal and/or tax advice regarding the legal and tax consequences of their investment transactions. The consequences of any action taken on the basis of information contained herein are solely the responsibility of the recipient.

Investment instruments are subject to risk, including possible loss of principal amount invested. Past performance should not be taken as an indication or guarantee of future performance, and no representation or warranty, express or implied, is made regarding future performance. The value of securities and financial instruments is subject to exchange rate fluctuation that may have a positive or adverse effect on the price or income of such securities or financial instruments. Some investments mentioned in this report may have a high level of volatility. High volatility investments may experience sudden and large falls in their value causing losses when that investment is realized. Some investments may not be readily realizable and it may be difficult to sell or realize those investments, similarly it may prove difficult to obtain reliable information about the value, or risks, to which such an investment is exposed.

This report may provide the addresses of websites or references. We have not reviewed any such site and takes no responsibility for the content contained therein. Such address or reference is provided solely for convenience and information. Accessing such website through this report shall be at the recipients own risk.