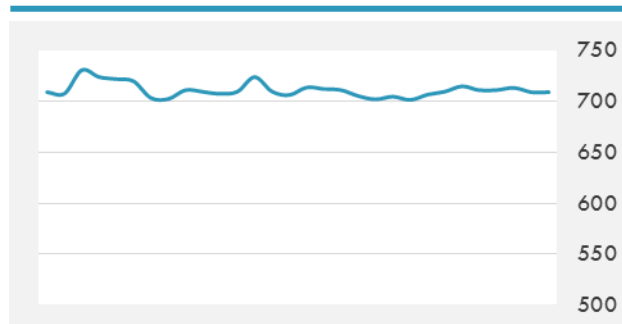
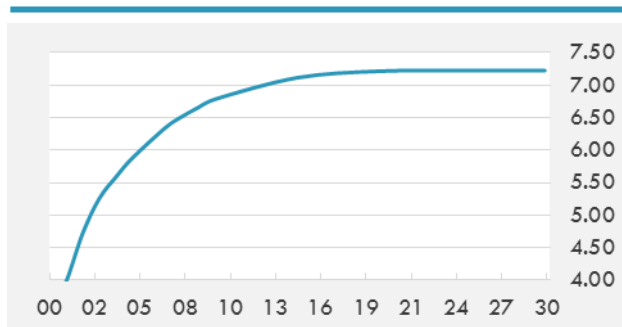


BEIRUT STOCK EXCHANGE

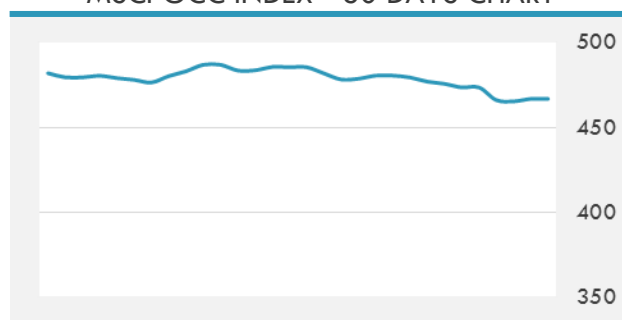
	Last	Daily %	YTD %	Dividend %
Development and Reconstruction				
Solidere A	9.04	-1.31%	-12.91%	1.09%
Solidere B	9	0.00%	-14.29%	1.10%
Solidere GDR	9.23	0.00%	-7.70%	1.07%
Banking				
Audi Listed	6.8	-1.31%	0.00%	5.88%
BLC Listed	0.99	0.00%	0.00%	0.00%
BOB Listed	18.8	0.00%	0.00%	3.17%
Byblos Listed	1.74	0.00%	2.35%	7.67%
BEMO Listed	1.69	-0.59%	-0.59%	2.35%
BLOM Listed	11.9	0.00%	12.26%	6.97%
Trading				
RYMCO	3.25	0.00%	0.00%	3.69%
Industrial				
Holcim	11.5	3.51%	-2.13%	7.37%
Ciments Blancs	1.57	0.00%	0.00%	0.00%

MSCI LEBANON INDEX - 30 DAYS CHART

LEBANESE USD SOVEREIGN CURVE


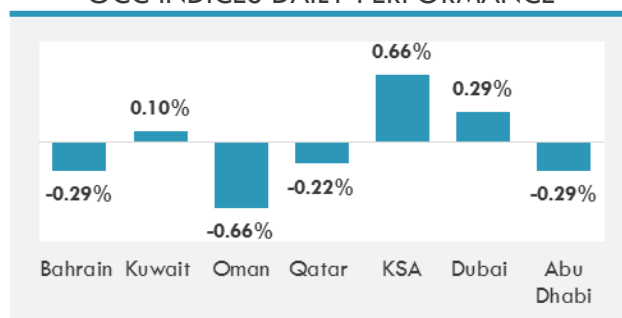
- Joseph Torbey, the president of the World Union of Arab Bankers said Wednesday he expects the liquidity of Arab banks to diminish in 2017 due to slow growth in deposits and a rise in non-performing loans.
- An hour after the US Federal Reserve hiked their fed funds rate for a second time in three months, the central bank of the UAE said in an late night announcement that they will raise interest rates applied to certificate of deposits by 25 basis points effective Thursday.

GCC EQUITY INDICES

	Last Price	Daily %	YTD %
Bahrain	1370.55	-0.29%	12.47%
Kuwait	6797.18	0.10%	17.63%
Oman	5660.16	-0.66%	-2.00%
Qatar	10291.86	-0.22%	-0.40%
KSA	6835.76	0.66%	-5.01%
Dubai	3478.81	0.29%	-0.30%
Abu Dhabi	4375.35	-0.29%	-3.86%

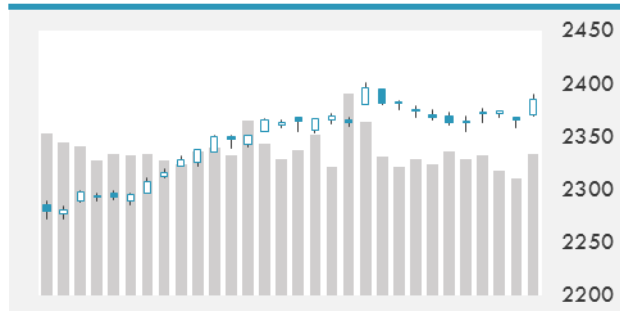
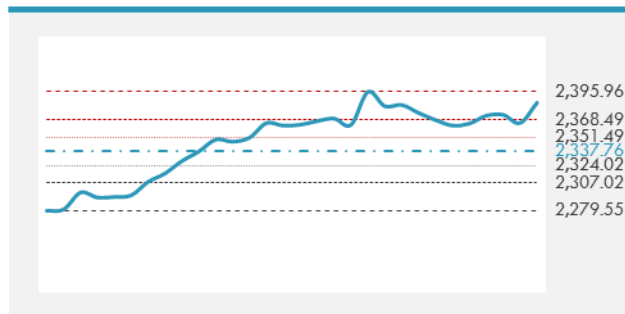
MSCI GCC INDEX - 30 DAYS CHART

LOCAL/GCC FOREIGN EXCHANGE

	Cross	Last Price
Lebanese Pound Spot	USD/LBP	1490.65
Bahraini Dinar Spot	USD/BHD	0.37699
Kuwaiti Dinar Spot	USD/KWD	0.30515
Omani Rial Spot	USD/OMR	0.38502
Qatari Riyal Spot	USD/QAR	3.6414
Saudi Riyal Spot	USD/SAR	3.7503
UAE Dirham Spot	USD/AED	3.673

GCC INDICES DAILY PERFORMANCE


UNITED STATES EQUITY MARKET INDICES

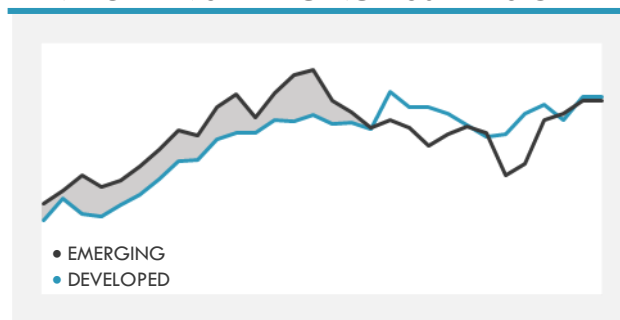
	Last Price	Daily %	YTD %	Δ10D Vol
Major Indices				
Dow Jones	20950.1	0.54%	6.01%	0.80%
S&P 500	2385.26	0.84%	6.54%	1.61%
Nasdaq	5900.047	0.74%	9.60%	0.10%
Sectors Indices				
Discretionary	694.85	0.51%	7.26%	0.94%
Staples	567.19	0.75%	6.66%	1.91%
Energy	515.23	2.08%	-7.08%	5.22%
Financials	409.91	-0.13%	6.05%	-4.24%
Healthcare	882.5	1.18%	10.74%	2.29%
Industrials	564.2	1.11%	4.86%	1.89%
IT	901.71	0.60%	11.61%	-0.83%
Materials	329.8	1.58%	5.65%	3.60%
Telecom	171.91	1.36%	-2.66%	3.31%
Utilities	261.59	1.64%	5.98%	2.77%
Real Estate	192.71	1.91%	1.30%	6.98%

S&P 500 INDEX - 30 DAYS CHART

S&P 500 SUPPORT & RESISTANCE


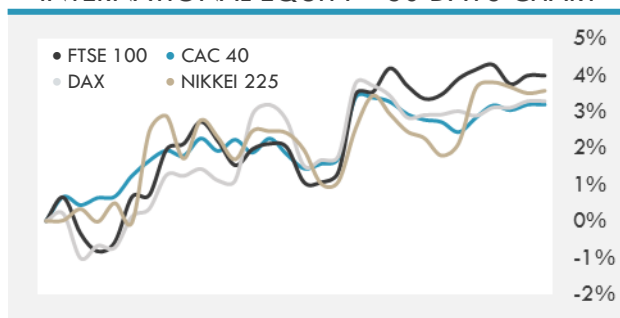
- U.S. stocks jumped after the Federal Reserve raised its benchmark lending rate a quarter point and maintained its expectation for two more increases this year.
- European stocks rose, lifted by gains in mining companies, as traders prepared for decisions by Federal Reserve officials and by Dutch voters that may give market signals for the region's interest rates and politics.
- The rally in stocks continued in Asia after the U.S. Federal Reserve cast a dovish tone on future rate hikes and said the world's largest economy is "doing well."

INTERNATIONAL MARKETS INDICES

	Last Price	Daily %	YTD %	Δ10D Vol
World	1095.5	0.58%	6.25%	0.67%
Developed	1854.15	0.61%	5.88%	0.74%
Emerging	943.52	0.38%	9.42%	0.04%
Frontier	2555.77	0.46%	5.68%	0.65%
Europe	126.9	0.44%	3.59%	0.80%
Latin America	2588.66	1.99%	10.60%	2.72%
Asia Pacific	145.72	0.03%	7.91%	-0.01%

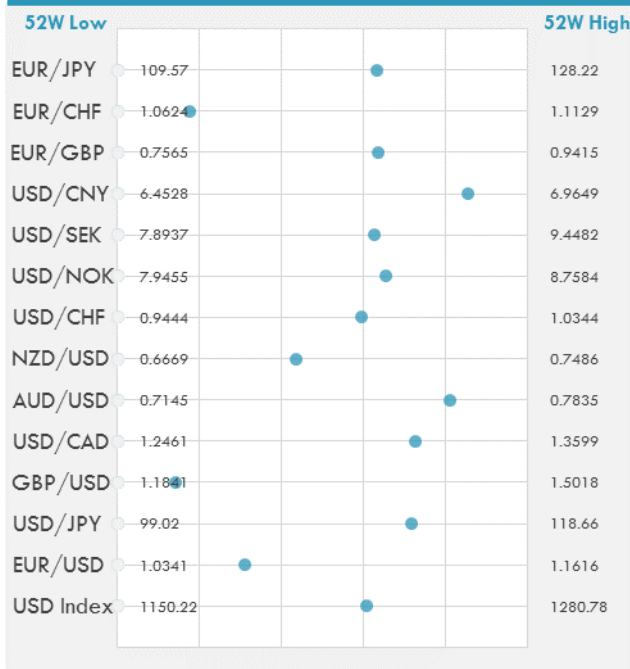
DEVELOPED VS EMERGING - 30 DAYS CHART

INTERNATIONAL EQUITY INDICES

	Last Price	Daily %	YTD %	Δ10D Vol
EuroStoxx 50	3409.32	0.29%	3.61%	0.02%
FTSE 100	7368.64	0.15%	3.16%	0.12%
CAC 40	4985.48	0.23%	2.53%	0.09%
DAX	12009.87	0.18%	4.61%	0.23%
Swiss SMI	8688.86	0.29%	5.71%	-0.04%
Nikkei 225	19590.14	0.07%	2.49%	-0.95%
CSI 300	3481.51	0.52%	5.18%	-1.05%

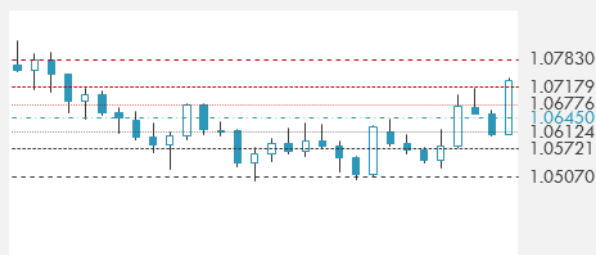
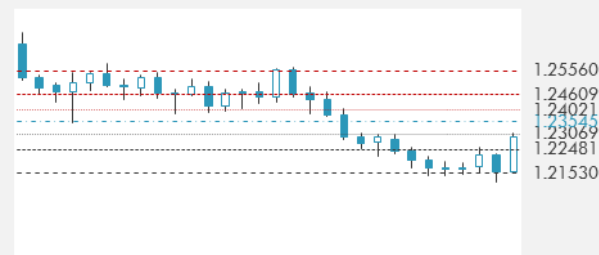
INTERNATIONAL EQUITY - 30 DAYS CHART


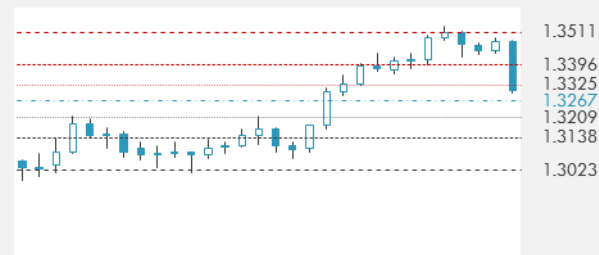
FOREIGN EXCHANGE MARKET

	Last Price	Daily %	Δ10D	Vol 25	ΔRR
Major Indices					
USD Index	1230.76	-0.05%	-0.59%	-	
EUR/USD	1.0728	-0.06%	-1.25%	-0.195	
USD/JPY	113.31	-0.06%	-0.11%	-0.395	
GBP/USD	1.2282	-0.07%	-0.05%	-0.450	
USD/CAD	1.3295	-0.07%	0.00%	0.098	
AUD/USD	0.7697	-0.16%	0.11%	-0.558	
NZD/USD	0.7009	-0.51%	0.07%	-0.490	
USD/CHF	0.9990	-0.12%	-0.40%	-0.080	
USD/NOK	8.4933	-0.03%	-0.77%	0.298	
USD/SEK	8.8693	0.07%	-1.39%	0.583	
USD/CNY	6.8914	-0.34%	1.02%	-0.138	
Major EUR Cross Rate					
EUR/GBP	0.87352	0.03%	-0.81%	0.363	
EUR/CHF	1.07173	-0.17%	-0.44%	-0.600	
EUR/JPY	121.56	-0.12%	-0.80%	-0.240	

DISTANCE FROM 52 WEEKS LOW/HIGH


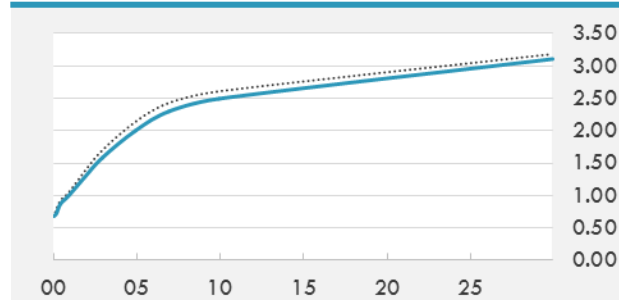
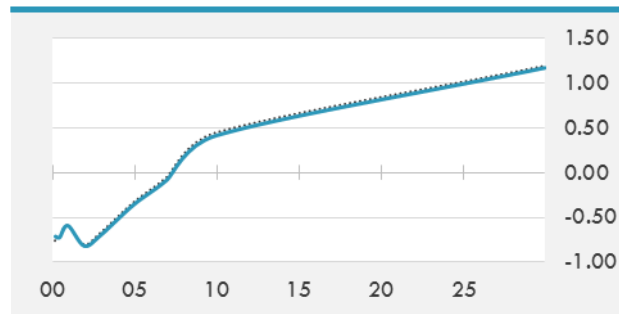
- Australian dollar falls on weak February jobs print though still manages to outperform kiwi which plummeted after N.Z. 4Q GDP misses all estimates.
- The Bloomberg Dollar Spot Index erased its Tuesday advance as traders trimmed long positions ahead of the FOMC's policy decision.
- The pound trimmed gains that had earlier taken it to a one-week high versus the dollar as U.K. labor market data showed wages slowed, even as the unemployment rate declined to its lowest in four decades.

EUR/USD 30 DAYS SUPPORT & RESISTANCE

GBP/USD 30 DAYS SUPPORT & RESISTANCE

USD/JPY 30 DAYS SUPPORT & RESISTANCE

USD/CAD 30 DAYS SUPPORT & RESISTANCE


GLOBAL BOND INDICES

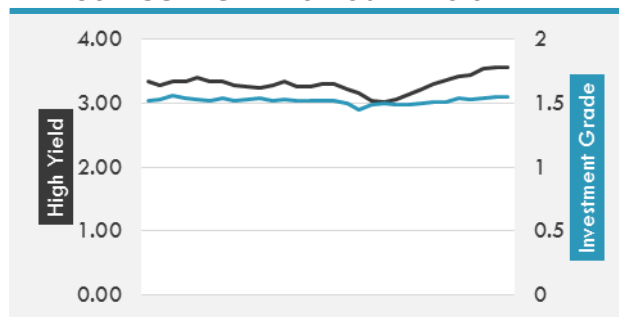
	Yield	ΔYield (in Bps)
Benchmark Indices		
US 10 Years Benchmark	2.493	-0.107
EU 10 Years Benchmark	0.415	-0.030
UK 10 Years Benchmark	1.211	-0.013
Sovereign Bonds		
US Treasury Bond	1.988	-0.081
Eurozone Sovereign Bond	0.777	-0.033
U.K. Sovereign Bond	1.08	-0.022
Japan Sovereign Bond	0.112	0.003
USD Emerging Sovereign Bond	4.844	-0.077
Corporate Bonds		
US Investment Grade Bond	3.432	-0.079
US High Yield Bond	6.127	-0.064
EUR Investment Grade Bond	0.781	-0.021
EUR High Yield Bond	3.048	0.029
USD Emerging Market IG & HY	4.991	-0.059

US TREASURIES YIELD CURVE

EUR GENERIC YIELD CURVE


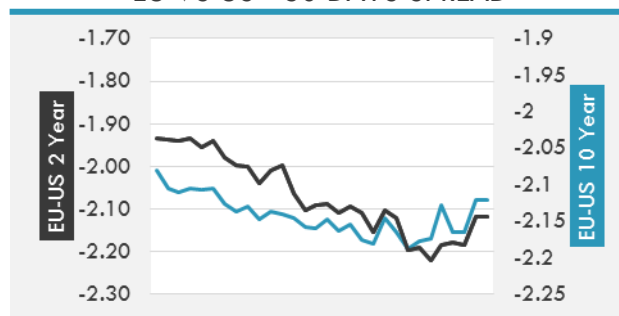
- Treasury prices rallied, the dollar sank and US stocks extended early gains after the Federal Reserve raised short-term interest rates by 25 basis.
- China's holdings of U.S. Treasuries declined as the world's second-largest economy used its foreign-exchange reserves to support the Yuan.
- Core bonds consistently edged higher, initially led by Dutch securities, which outperformed, before French debt led gains through the afternoon.

OVERNIGHT RATES - SWAPS

	Yield	ΔYield (in Bps)
3M USD LIBOR	1.13733	0.0000
3M EUR EURIBOR	-0.33	0.0000
3M GBP LIBOR	0.34263	0.0000
3Y USD SWAP	1.844	-0.0936
5Y USD SWAP	2.1129	-0.1144
10Y USD SWAP	2.4665	-0.1048
30Y USD SWAP	2.7213	-0.0763

USD CORPORATES - 30 DAYS SPREAD

FIXED INCOME SPREADS

	Spread	ΔSpread (in Bps)
USD 3M vs 10Y Spread	1.76677	(0.0665)
USD 2Y vs 10Y Spread	1.18957	(0.0284)
USD IG Spread	1.55	0.0100
USD HY Spread	3.57	0.0300
EU vs US 10Y Spread	-2.0784	0.0764
EU vs US 2Y Spread	-2.1199	0.0652
EM vs Benchmark Spread	259.2	0.300

EU VS US - 30 DAYS SPREAD


GLOBAL COMMODITIES MARKET

	Last Price	Daily %
Commodity Index	84.51	0.73%

Energy

WTI Crude Future	48.86	2.39%
Brent Crude Future	51.81	1.75%
NYMEX Gasoline	158.34	-0.01%
NYMEX Heat Oil	151.24	1.37%
ICE Gasoil	455	1.56%
NYMEX Natural Gas	2.981	1.46%

Precious Metals

Gold Spot \$/Oz	1219.88	1.73%
Silver Spot \$/Oz	17.346	2.73%
Platinum Spot \$/Oz	954	1.74%
Palladium Spot \$/Oz	762.89	2.75%
Gold Future	1200.7	-0.16%
Silver Future	16.923	0.00%
Platinum Future	936.8	-0.22%
Palladium Future	745.45	0.51%

Base Metals

LME Aluminum	1887	1.45%
LME Copper	5864	0.76%
LME Zinc	2808	2.13%
LME Nickel	10205	-0.24%
LME Lead	2249	1.15%
LME Tin	19875	-0.48%

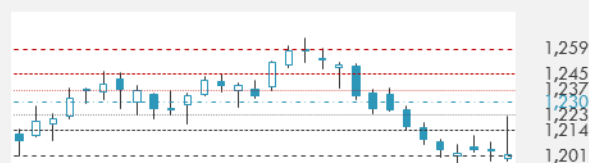
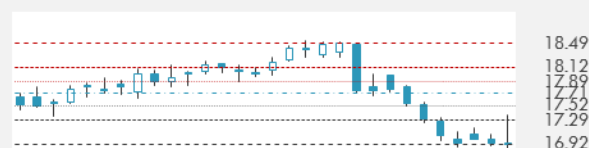
Agricultural

Corn CBT	363.5	0.35%
Wheat CBT	436	1.28%
Soybeans CBT	998	-0.13%
Bean Meal CBT	327.6	0.12%
Rough Rice CBT	9.675	-0.62%
MDE Palm Oil	2817	2.36%
Soybean CBT	32.22	-0.25%
Coffee ICE	140.9	-0.25%
Sugar #11 ICE	18.23	0.39%
Cotton #2 ICE	78.08	1.21%
Cocoa ICE	2048	-0.49%
Ethanol CME	1.536	1.12%
Lumber CME	365.5	1.67%
Orange Juice ICE	178.1	1.60%
Live Cattle CME	108.25	1.26%
Feeder Cattle CME	127.725	0.95%
Lean Hogs CME	78.825	-0.44%

COMMODITY INDEX SUPPORT & RESISTANCE

WTI OIL 30 DAYS SUPPORT & RESISTANCE


- Oil extended gains above \$49 a barrel as U.S. government data showed an unexpected fall in crude stockpiles, the first decline this year.
- Gold advances after Fed Chair says Fed intends to keep its monetary policy accommodative for "some time."

GOLD 30 DAYS SUPPORT & RESISTANCE

SILVER 30 DAYS SUPPORT & RESISTANCE


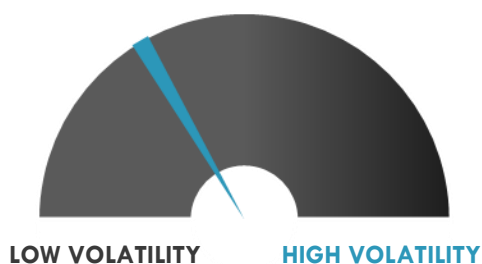
TOP 10 WINNERS

	Ticker	Last Price	Daily %
S&P 500 Stocks			
SOUTHWESTRN ENGY	SWN	7.81	5.83
NEWMONT MINING	NEM	34.1	5.25
FREEMONT-MCMORAN	FCX	12.89	5.05
HARLEY-DAVIDSON	HOG	62.94	4.73
TRANSOCEAN LTD	RIG	12.98	4.59
NUCOR CORP	NUE	63.45	4.48
HESS CORP	HES	49.15	4.20
CHESAPEAKE ENERG	CHK	5.45	4.01
PENTAIR PLC	PNR	62.71	3.82
NATL OILWELL VAR	NOV	39.13	3.77

TOP 10 LOSERS

	Ticker	Last Price	Daily %
S&P 500 Stocks			
FIFTH THIRD BANC	FITB	26.45	-1.12
EXPRESS SCRIPTS	ERSX	66.06	-1.17
SUNTRUST BANKS	STI	57.91	-1.24
M&T BANK CORP	MTB	163.75	-1.33
S&P GLOBAL INC	SPGI	130.35	-1.38
DISCOVER FINANCI	DFS	70.63	-1.63
O'REILLY AUTOMOT	ORLY	270.71	-1.70
AUTOZONE INC	AZO	716.29	-1.74
CAPITAL ONE FINA	COF	89.92	-1.99
MACY'S INC	M	30.32	-2.04

S&P 500 DISTRIBUTION

S&P VOLATILITY INDEX


- Toshiba nosedived another 12% overnight after the Tokyo Stock Exchange placed the troubled conglomerate under "Security Under Supervision," the next regulatory step to a potential delisting.
- Shares of Renault are down 3% in France after a report from Liberation accused the carmaker of cheating customers on emissions levels in its diesel engines.
- MoneyGram confirms that it received an unsolicited proposal from Euronet Worldwide at \$15.20 per share
- In effort to obtain debt refinancing, Toshiba is alleged to have proposed stakes in its memory-chip unit, as well as in other business segments while putting up real estate as collateral amid increasing complications primarily stemming from an expected \$6.3B write-down of its Westinghouse nuclear operation.
- Targeting mass market vehicles, Bosch and Nvidia (partnership made known prior at CES 2017, more details to come) are working on an artificial intelligence autonomous car system utilizing Nvidia's DRIVE PX technology with Xavier, Nvidia's forthcoming (samples to be available in Q4 2017) AI supercomputer.
- UPS announces an aggressive commitment to natural gas vehicles and infrastructure.
- Chevron has discovered oil at an appraisal well at its Anchor prospect in the deepwater Gulf of Mexico, according to partner Cobalt Energy.
- A merger scenario between BP and Exxon Mobil was downplayed by BP's Brian Gilvary, as the company is focused on underlying delivery.

KEY ECONOMIC INDICATORS

Country	Event	Surv(M)	Actual	Prior	Time
Bahrain	M1 Money Supply YoY	--	--	2.56%	
Bahrain	M2 Money Supply YoY	--	--	3.23%	
Bahrain	M3 Money Supply YoY	--	--	3.67%	
Canada	Int'l Securities Transactions	--	--	10.23b	14:30
Eurozone	CPI YoY	2.00%	--	2.00%	12:00
Eurozone	CPI MoM	0.40%	--	--	12:00
Eurozone	CPI Core YoY	0.90%	--	0.90%	12:00
Germany	Merkel, Macron Hold Talks in Berlin				
Japan	Machine Tool Orders YoY	--	9.10%	9.10%	8:00
Japan	BOJ March Monetary Policy Decision				4:30
Oman	CPI YoY	--	--	1.79%	
Russia	Industrial Production YoY	1.30%	--	2.30%	
United Kingdom	Bank of England Bank Rate	0.25%	--	0.25%	14:00
United Kingdom	BOE Asset Purchase Target	435b	--	435b	14:00
United Kingdom	BOE Rate Decision				14:00
United States	Initial Jobless Claims	240k	--	243k	14:30
United States	Housing Starts	1264k	--	1246k	14:30
United States	Philadelphia Fed Business Outlook	30	--	43.3	14:30
United States	Continuing Claims	2050k	--	2058k	14:30
United States	Building Permits	1268k	--	1285k	14:30

Banque BEMO sal
Head Office - Private and Corporate Banking

96 Pasteur Building, Pasteur Street, Medawar Area, P.O. Box: 16-6353, Beirut - Lebanon
Tel: + 961 1 568 250 Fax: + 961 1 568 266

Investment & Research research@bemobank.com

Beirut Central District Riad El Solh Square, Esseily Building Bloc A, 7th Floor Beirut - Lebanon
Tel: + 961 1 992 600 Fax: + 961 1 983 368
www.bemobank.com

Disclaimer:

This report is published for information purposes only. The information herein has been compiled from, or based upon sources considered to be reliable (Bloomberg, SeekingAlpha, DailyStar...), but we do not guarantee or assume responsibility for its completeness and accuracy. This document should not be construed as a solicitation to take part in any investment, or as constituting any representation or warranty on our part. This report is not to be relied upon in substitution for the exercise of specialists.

We may not have taken any steps to ensure that the securities referred to in this report are suitable for any particular investor. The investments and services contained or referred to herein are not purported to be exhaustive, any person considering an investment should seek specialist advice on the suitability of an investment.

Nothing in this report constitutes investment, legal, accounting or tax advice, or a representation that any investment or strategy is suitable or appropriate to your individual circumstances, or otherwise constitutes a personal recommendation. Clients understand that it is their responsibility to seek legal and/or tax advice regarding the legal and tax consequences of their investment transactions. The consequences of any action taken on the basis of information contained herein are solely the responsibility of the recipient.

Investment instruments are subject to risk, including possible loss of principal amount invested. Past performance should not be taken as an indication or guarantee of future performance, and no representation or warranty, express or implied, is made regarding future performance. The value of securities and financial instruments is subject to exchange rate fluctuation that may have a positive or adverse effect on the price or income of such securities or financial instruments. Some investments mentioned in this report may have a high level of volatility. High volatility investments may experience sudden and large falls in their value causing losses when that investment is realized. Some investments may not be readily realizable and it may be difficult to sell or realize those investments, similarly it may prove difficult to obtain reliable information about the value, or risks, to which such an investment is exposed.

This report may provide the addresses of websites or references. We have not reviewed any such site and takes no responsibility for the content contained therein. Such address or reference is provided solely for convenience and information. Accessing such website through this report shall be at the recipients own risk.