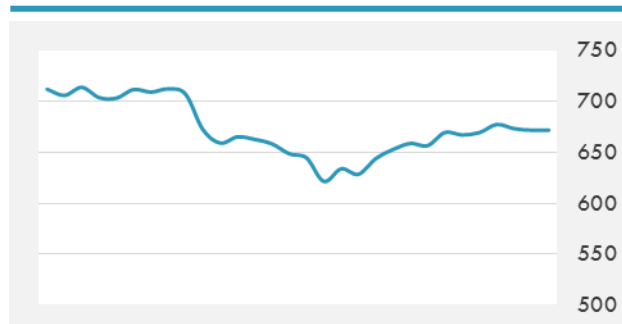
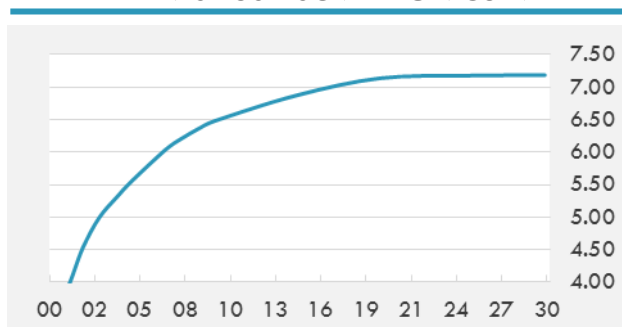


BEIRUT STOCK EXCHANGE

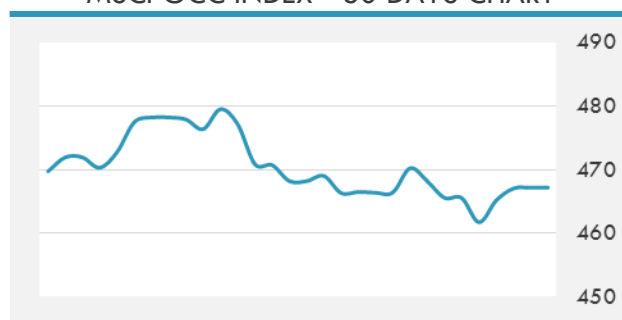
	Last	Daily %	YTD %	Dividend %
Development and Reconstruction				
Solidere A	9.05	0.78%	-12.81%	1.08%
Solidere B	8.96	2.17%	-14.67%	1.09%
Solidere GDR	9.25	0.00%	-7.50%	1.07%
Banking				
Audi Listed	6.39	-0.93%	-6.03%	7.91%
BLC Listed	0.99	0.00%	0.00%	0.00%
BOB Listed	18.8	0.00%	0.00%	3.52%
Byblos Listed	1.65	-1.79%	-2.94%	8.12%
BEMO Listed	1.7	0.00%	0.00%	2.33%
BLOM Listed	10.72	0.19%	1.13%	9.26%
Trading				
RYMCO	3.25	0.00%	0.00%	3.69%
Industrial				
Holcim	11.9	-1.57%	1.28%	7.12%
Ciments Blancs	1.57	0.00%	0.00%	0.00%

MSCI LEBANON INDEX - 30 DAYS CHART

LEBANESE USD SOVEREIGN CURVE


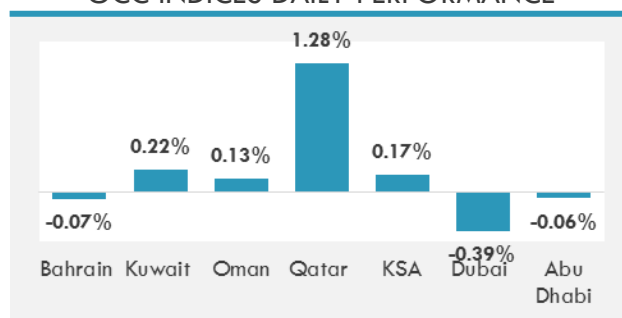
- Lebanon may face serious challenges to meet all the deadlines which the Energy Ministry and Lebanese Petroleum Administration have set in their plan if the political blocs in the government fail to agree on an electoral law before June.
- Lebanon is expected to launch its biggest-ever fiber optics tender in a month's time, Telecoms Minister Jamal Jarrah said Thursday.
- Energy Minister Cesar Abi Khalil Thursday warned that electricity wouldn't be provided in Lebanon without a "salvage plan."

GCC EQUITY INDICES

	Last Price	Daily %	YTD %
Bahrain	1307.09	-0.07%	7.10%
Kuwait	6670.47	0.22%	16.05%
Oman	5430.09	0.13%	-6.06%
Qatar	9991.67	1.28%	-3.12%
KSA	6930.32	0.17%	-4.55%
Dubai	3395.21	-0.39%	-3.13%
Abu Dhabi	4581.76	-0.06%	1.36%

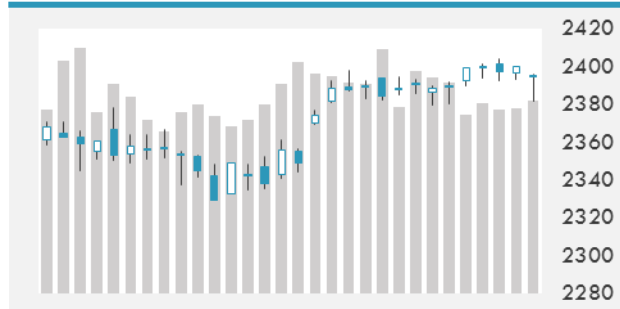
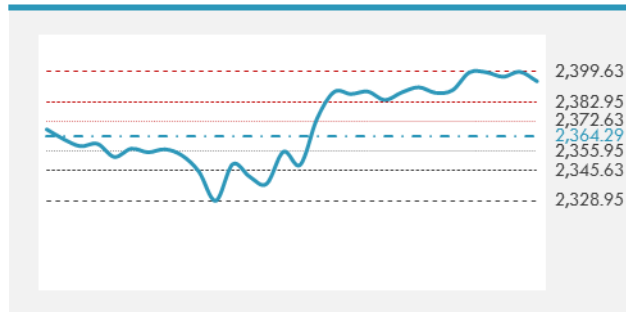
MSCI GCC INDEX - 30 DAYS CHART

LOCAL/GCC FOREIGN EXCHANGE

	Cross	Last Price
Lebanese Pound Spot	USD/LBP	1512
Bahraini Dinar Spot	USD/BHD	0.37701
Kuwaiti Dinar Spot	USD/KWD	0.30479
Omani Rial Spot	USD/OMR	0.38501
Qatari Riyal Spot	USD/QAR	3.6414
Saudi Riyal Spot	USD/SAR	3.7506
UAE Dirham Spot	USD/AED	3.6729

GCC INDICES DAILY PERFORMANCE


UNITED STATES EQUITY MARKET INDICES

	Last Price	Daily %	YTD %	Δ10D Vol
Major Indices				
Dow Jones	20919.42	-0.11%	5.85%	-0.14%
S&P 500	2394.44	-0.22%	6.95%	0.07%
Nasdaq	6115.964	-0.22%	13.61%	0.31%
Sectors Indices				
Discretionary	716.46	-0.60%	10.60%	0.43%
Staples	565.39	0.09%	6.32%	0.03%
Energy	498.94	-0.20%	-10.02%	0.03%
Financials	392.22	-0.53%	1.47%	-1.44%
Healthcare	870.79	0.05%	9.27%	-0.15%
Industrials	571.26	-0.03%	6.17%	-0.54%
IT	948.56	-0.15%	17.40%	0.58%
Materials	330.41	-0.27%	5.85%	-0.44%
Telecom	157.54	-0.48%	-10.80%	-0.78%
Utilities	260.35	0.01%	5.48%	-0.21%
Real Estate	194.16	-0.51%	2.07%	-0.11%

S&P 500 INDEX - 30 DAYS CHART

S&P 500 SUPPORT & RESISTANCE


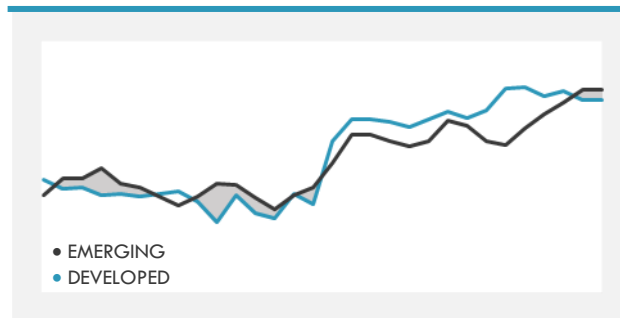
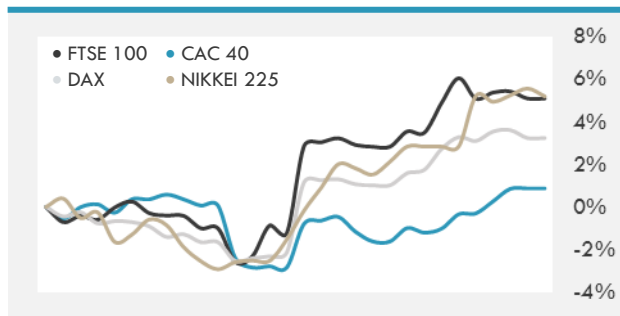
- Asian shares pared its weekly gain as markets pulled back from multi-year highs amid disappointing earnings.
- European stocks ended a two-day advance as Bank of England Governor Mark Carney said the institution hasn't planned for a disorderly Brexit.
- U.S. stocks fell after setting a record high Wednesday as retailer stocks declined and small-cap stocks sold off.

INTERNATIONAL MARKETS INDICES

	Last Price	Daily %	YTD %	Δ10D Vol
World	1122.19	-0.16%	8.84%	0.02%
Developed	1891.21	-0.25%	7.99%	0.22%
Emerging	1000.35	0.53%	16.01%	-0.11%
Frontier	2674.74	0.63%	10.60%	0.43%
Europe	133.16	-0.50%	8.70%	0.88%
Latin America	2678.21	0.07%	14.42%	0.04%
Asia Pacific	150.93	0.46%	11.76%	-0.16%

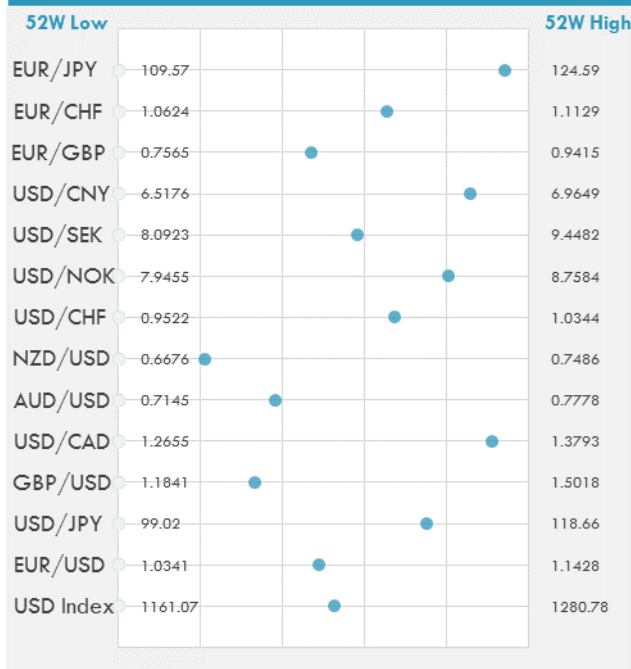
INTERNATIONAL EQUITY INDICES

	Last Price	Daily %	YTD %	Δ10D Vol
EuroStoxx 50	3623.55	-0.61%	10.12%	1.25%
FTSE 100	7386.63	0.02%	3.41%	-1.68%
CAC 40	5383.42	-0.32%	10.72%	0.02%
DAX	12711.06	-0.36%	10.71%	0.36%
Swiss SMI	9064.88	-0.27%	10.28%	0.66%
Nikkei 225	19891.49	-0.35%	4.07%	-0.27%
CSI 300	3385.66	0.86%	2.28%	2.19%

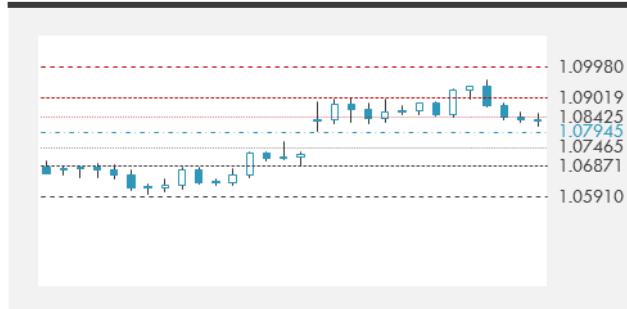
DEVELOPED VS EMERGING - 30 DAYS CHART

INTERNATIONAL EQUITY - 30 DAYS CHART


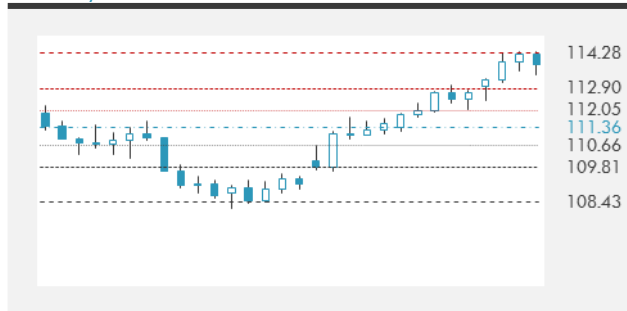
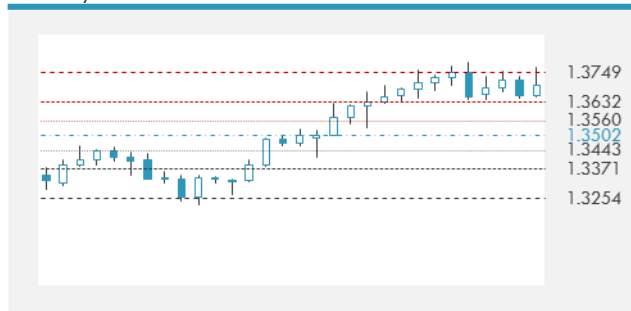
FOREIGN EXCHANGE MARKET

	Last Price	Daily %	Δ10D	Vol 25	ΔRR
Major Indices					
USD Index	1223.81	-0.05%	0.04%	-	
EUR/USD	1.0872	0.10%	0.03%	0.095	
USD/JPY	113.78	-0.07%	0.19%	-0.338	
GBP/USD	1.2892	0.05%	-0.57%	0.050	
USD/CAD	1.3692	-0.04%	-0.08%	0.183	
AUD/USD	0.7386	0.09%	-0.67%	-0.495	
NZD/USD	0.6847	-0.03%	-0.64%	-0.438	
USD/CHF	1.0075	-0.03%	0.04%	-0.280	
USD/NOK	8.5989	0.01%	-0.02%	0.328	
USD/SEK	8.8791	-0.06%	0.00%	0.280	
USD/CNY	6.9008	-0.04%	-0.06%	0.098	
Major EUR Cross Rate					
EUR/GBP	0.84332	0.06%	-0.84%	0.115	
EUR/CHF	1.09532	0.07%	-0.01%	-0.070	
EUR/JPY	123.69	0.02%	0.01%	-0.355	

DISTANCE FROM 52 WEEKS LOW/HIGH


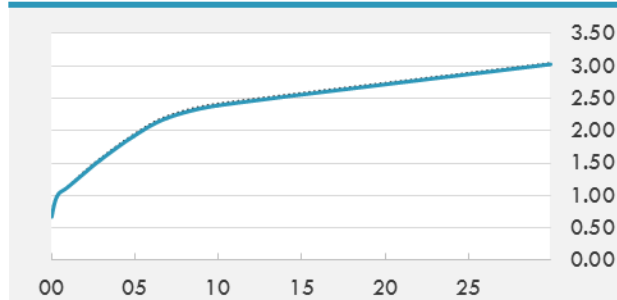
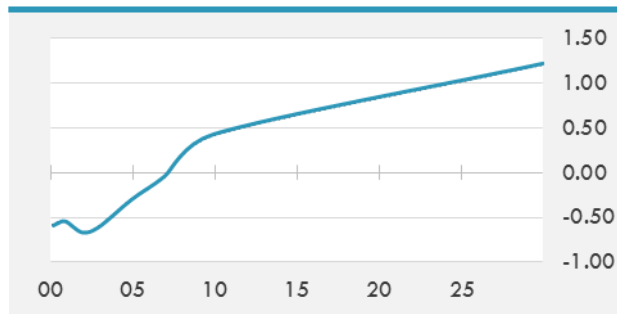
- The dollar headed for its best week this year before reports forecast to show inflation and retail sales both increased last month, backing the case for the Federal Reserve to keep raising interest rates.
- EM Asian currencies are buoyed by broad dollar weakness after U.S. equities declined Thursday and Treasury yields fell ahead of U.S. inflation data.
- The dollar pared its losses against the yen as equities rebounded and as a round of stale position liquidations abated.

EUR/USD 30 DAYS SUPPORT & RESISTANCE

GBP/USD 30 DAYS SUPPORT & RESISTANCE

USD/JPY 30 DAYS SUPPORT & RESISTANCE

USD/CAD 30 DAYS SUPPORT & RESISTANCE


GLOBAL BOND INDICES

	Yield	ΔYield (in Bps)
Benchmark Indices		
US 10 Years Benchmark	2.3874	-0.027
EU 10 Years Benchmark	0.432	0.010
UK 10 Years Benchmark	1.159	-0.007
Sovereign Bonds		
US Treasury Bond	1.928	-0.01
Eurozone Sovereign Bond	0.704	0.019
U.K. Sovereign Bond	1.1	-0.015
Japan Sovereign Bond	0.111	0.01
USD Emerging Sovereign Bond	4.575	-0.015
Corporate Bonds		
US Investment Grade Bond	3.309	-0.013
US High Yield Bond	5.759	0.052
EUR Investment Grade Bond	0.714	0.005
EUR High Yield Bond	2.55	0.005
USD Emerging Market IG & HY	4.716	-0.014

US TREASURIES YIELD CURVE

EUR GENERIC YIELD CURVE


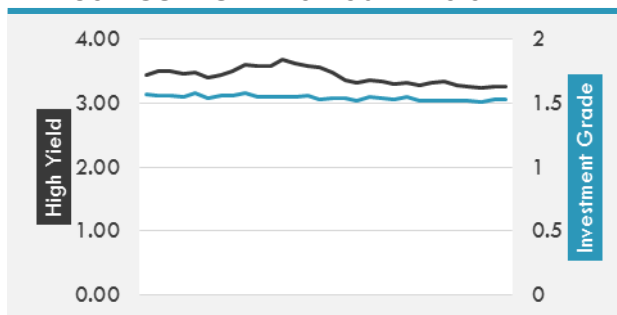
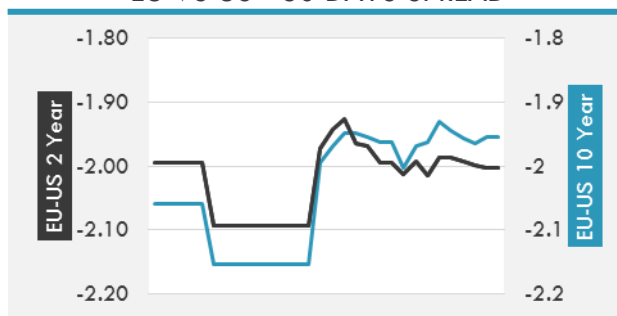
- Treasuries were marginally higher shortly after the 3pm ET close, supported over morning session by sharp fall in stocks; afternoon gains were capped as soft 30Y auction initially weighed on the long-end.
- Core bonds open marginally higher with Treasuries underpinned in Asian hours as U.S. stock futures dip. Supply announcements due from Spain, France. OAT syndication not ruled out for next week despite auctions.

OVERNIGHT RATES - SWAPS

	Yield	ΔYield (in Bps)
3M USD LIBOR	1.18094	0.0000
3M EUR EURIBOR	-0.329	0.0000
3M GBP LIBOR	0.31463	0.0000
3Y USD SWAP	1.7511	-0.0131
5Y USD SWAP	1.9805	-0.0154
10Y USD SWAP	2.309	-0.0152
30Y USD SWAP	2.5659	-0.0118

FIXED INCOME SPREADS

	Spread	ΔSpread (in Bps)
USD 3M vs 10Y Spread	1.50845	(0.0115)
USD 2Y vs 10Y Spread	1.04862	(0.0067)
USD IG Spread	1.53	0.0200
USD HY Spread	3.26	0.0100
EU vs US 10Y Spread	-1.9544	0.0100
EU vs US 2Y Spread	-2.0019	(0.0037)
EM vs Benchmark Spread	239.6	0.500

USD CORPORATES - 30 DAYS SPREAD

EU VS US - 30 DAYS SPREAD


GLOBAL COMMODITIES MARKET

	Last Price	Daily %
Commodity Index	83.13	0.44%

Energy

WTI Crude Future	47.83	1.06%
Brent Crude Future	50.77	1.10%
NYMEX Gasoline	156.22	1.47%
NYMEX Heat Oil	148.99	0.98%
ICE Gasoil	449	1.13%
NYMEX Natural Gas	3.376	2.55%

Precious Metals

Gold Spot \$/Oz	1225.04	0.49%
Silver Spot \$/Oz	16.3385	0.87%
Platinum Spot \$/Oz	918.4	0.78%
Palladium Spot \$/Oz	803.12	0.68%
Gold Future	1224.2	0.43%
Silver Future	16.265	0.36%
Platinum Future	917.7	0.86%
Palladium Future	798.95	-0.05%

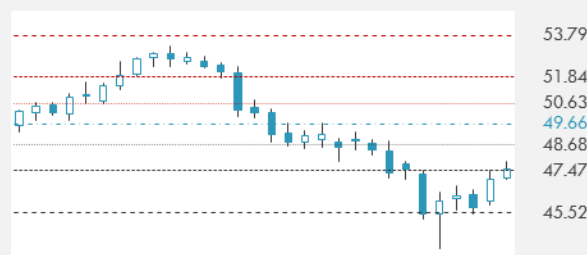
Base Metals

LME Aluminum	1875	0.54%
LME Copper	5543	0.77%
LME Zinc	2591	-0.35%
LME Nickel	9315	2.14%
LME Lead	2177	-0.59%
LME Tin	19865	0.97%

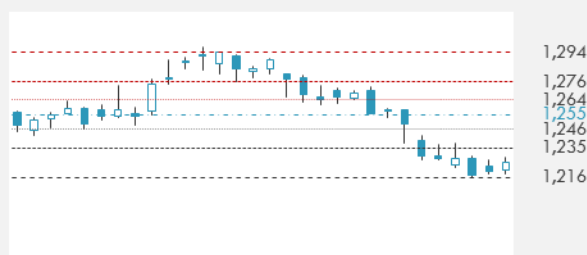
Agricultural

Corn CBT	369.25	-1.20%
Wheat CBT	433.75	0.46%
Soybeans CBT	966.25	-0.41%
Bean Meal CBT	314.9	-0.88%
Rough Rice CBT	10.64	3.45%
MDE Palm Oil	2672	1.67%
Soybean CBT	32.49	0.65%
Coffee ICE	134.25	-1.76%
Sugar #11 ICE	15.63	-1.33%
Cotton #2 ICE	79.18	3.52%
Cocoa ICE	1952	-0.10%
Ethanol CME	1.482	1.44%
Lumber CME	372.6	-0.48%
Orange Juice ICE	145	0.94%
Live Cattle CME	119.675	-0.60%
Feeder Cattle CME	147.325	-1.07%
Lean Hogs CME	77.075	-0.26%

COMMODITY INDEX SUPPORT & RESISTANCE

WTI OIL 30 DAYS SUPPORT & RESISTANCE


- Oil is heading for its first weekly advance in a month as bloated U.S. crude inventories continue to shrink and two OPEC members said there's consensus to extend supply cuts past June.
- Gold heads for fourth weekly decline, longest stretch since Dec.

GOLD 30 DAYS SUPPORT & RESISTANCE

SILVER 30 DAYS SUPPORT & RESISTANCE

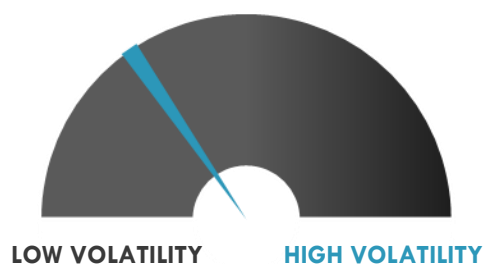

TOP 10 WINNERS

	Ticker	Last Price	Daily %
S&P 500 Stocks			
ENDO INTERNATION	ENDP	13.73	5.53
NVIDIA CORP	NVDA	126.5	4.30
TEXTRON INC	TXT	48.57	3.60
MYLAN NV	MYL	39.43	3.19
BECTON DICKINSON	BDX	184.86	2.84
TWENTY-FIRST - B	FOX	28.32	2.31
WHOLE FOODS MKT	WFM	37.03	2.15
WELLTOWER INC	HCN	71.5	2.13
MALLINCKRODT	MNK	46.07	2.06
REGENERON PHARM	REGN	440.43	2.05

TOP 10 LOSERS

	Ticker	Last Price	Daily %
S&P 500 Stocks			
TARGET CORP	TGT	56.06	-4.02
RALPH LAUREN COR	RL	79.23	-4.62
L BRANDS INC	LB	50.85	-4.79
TRIPADVISOR INC	TRIP	45.63	-4.92
SYMANTEC CORP	SYMC	31.46	-5.07
HOLOGIC INC	HOLX	43.62	-5.09
NORDSTROM INC	JWN	46.21	-7.60
KOHL'S CORP	KSS	37.16	-7.84
FRONTIER COMMUNI	FTR	1.2	-9.09
MACY'S INC	M	24.35	-17.01

S&P 500 DISTRIBUTION

S&P VOLATILITY INDEX


- An advisor to the European Court of Justice has recommended UBER be classified as a transportation company and subject to local laws governing them, instead of a technology firm.
- Exxon Mobil agrees to buy a refining and petrochemical plant owned by Jurong Aromatics in Singapore that will boost its output and meet demand in Asia; no financial details of the purchase are provided.
- Safran aims to fix a Boeing plane engine glitch within weeks after the planemaker had to suspend test flights on its 737 Max. A quality problem was discovered in turbine disks provided by one of two suppliers, but it's not related to the part's design, Safran Aircraft Engines CEO Olivier Andries told reporters.
- Delta Air Lines agrees with Airbus SE to place an expanded A321-200 order for 30 firm additional aircraft. The company is also deferring 10 of the airline's 25 A350-900 aircraft deliveries set for 2019-2020 by two to three years with additional delivery flexibility.
- Abercrombie & Fitch is out with an official confirmation that it has received "expressions of interest" from several parties regarding a potential transaction with the company. The company says it doesn't intend to make any further comments on the discussions until they are concluded.
- A top exec at Volkswagen says the German automaker plans to hang on to the Bugatti or Bentley brands as part of the company's new path forward.
- A federal judge approves the payment by Volkswagen of \$1.22B in buybacks and repairs to U.S. diesel owners that weren't included in the first larger settlement deal.

KEY ECONOMIC INDICATORS

Country	Event	Surv(M)	Actual	Prior	Time
China	Money Supply M2 YoY	10.80%	--	10.60%	
China	New Yuan Loans CNY	815.0b	--	1020.0b	
Eurozone	Industrial Production SA MoM	0.30%	--	-0.30%	12:00
Germany	CPI YoY	2.00%	2.00%	2.00%	9:00
Germany	CPI MoM	0.00%	0.00%	0.00%	9:00
Germany	GDP SA QoQ	0.60%	0.60%	0.40%	9:00
Germany	CPI EU Harmonized YoY	2.00%	2.00%	2.00%	9:00
Germany	CPI EU Harmonized MoM	0.00%	0.00%	0.00%	9:00
Germany	GDP WDA YoY	1.70%	1.70%	1.70%	9:00
Japan	Money Stock M2 YoY	4.30%	4.30%	4.30%	2:50
Japan	Money Stock M3 YoY	3.60%	3.60%	3.60%	2:50
Qatar	CPI YoY	--	--	0.90%	
Russia	Trade Balance	12.4b	--	10.2b	16:00
United States	CPI MoM	0.20%	--	-0.30%	15:30
United States	U. of Mich. Sentiment	97	--	97	17:00
United States	Retail Sales Advance MoM	0.60%	--	-0.20%	15:30
United States	CPI Ex Food and Energy MoM	0.20%	--	-0.10%	15:30
United States	CPI YoY	2.30%	--	2.40%	15:30
United States	Baker Hughes U.S. Rig Count	--	--	877	20:00
United States	Retail Sales Ex Auto MoM	0.50%	--	0.00%	15:30

Banque BEMO sal
Head Office - Private and Corporate Banking

96 Pasteur Building, Pasteur Street, Medawar Area, P.O. Box: 16-6353, Beirut - Lebanon
Tel: + 961 1 568 250 Fax: + 961 1 568 266

Investment & Research research@bemobank.com

Beirut Central District Riad El Solh Square, Esseily Building Bloc A, 7th Floor Beirut - Lebanon
Tel: + 961 1 992 600 Fax: + 961 1 983 368
www.bemobank.com

Disclaimer:

This report is published for information purposes only. The information herein has been compiled from, or based upon sources considered to be reliable (Bloomberg, SeekingAlpha, DailyStar...), but we do not guarantee or assume responsibility for its completeness and accuracy. This document should not be construed as a solicitation to take part in any investment, or as constituting any representation or warranty on our part. This report is not to be relied upon in substitution for the exercise of specialists.

We may not have taken any steps to ensure that the securities referred to in this report are suitable for any particular investor. The investments and services contained or referred to herein are not purported to be exhaustive, any person considering an investment should seek specialist advice on the suitability of an investment.

Nothing in this report constitutes investment, legal, accounting or tax advice, or a representation that any investment or strategy is suitable or appropriate to your individual circumstances, or otherwise constitutes a personal recommendation. Clients understand that it is their responsibility to seek legal and/or tax advice regarding the legal and tax consequences of their investment transactions. The consequences of any action taken on the basis of information contained herein are solely the responsibility of the recipient.

Investment instruments are subject to risk, including possible loss of principal amount invested. Past performance should not be taken as an indication or guarantee of future performance, and no representation or warranty, express or implied, is made regarding future performance. The value of securities and financial instruments is subject to exchange rate fluctuation that may have a positive or adverse effect on the price or income of such securities or financial instruments. Some investments mentioned in this report may have a high level of volatility. High volatility investments may experience sudden and large falls in their value causing losses when that investment is realized. Some investments may not be readily realizable and it may be difficult to sell or realize those investments, similarly it may prove difficult to obtain reliable information about the value, or risks, to which such an investment is exposed.

This report may provide the addresses of websites or references. We have not reviewed any such site and takes no responsibility for the content contained therein. Such address or reference is provided solely for convenience and information. Accessing such website through this report shall be at the recipients own risk.