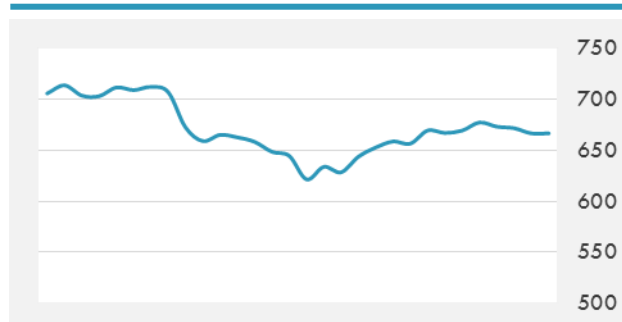
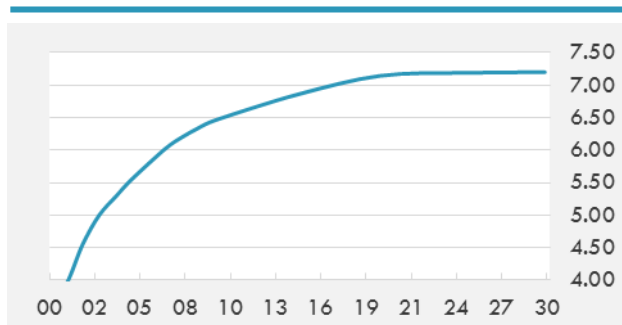


BEIRUT STOCK EXCHANGE

	Last	Daily %	YTD %	Dividend %
Development and Reconstruction				
Solidere A	9	-1.64%	-13.29%	1.10%
Solidere B	8.8	-2.87%	-16.19%	1.12%
Solidere GDR	9.12	-1.41%	-8.80%	1.08%
Banking				
Audi Listed	6.39	0.00%	-6.03%	7.91%
BLC Listed	0.99	0.00%	0.00%	0.00%
BOB Listed	18.8	0.00%	0.00%	3.52%
Byblos Listed	1.62	0.00%	-4.71%	8.12%
BEMO Listed	1.7	0.00%	0.00%	2.33%
BLOM Listed	10.7	0.00%	0.94%	9.26%
Trading				
RYMCO	3.25	0.00%	0.00%	3.69%
Industrial				
Holcim	11.9	0.00%	1.28%	7.12%
Ciments Blancs	1.57	0.00%	0.00%	0.00%

MSCI LEBANON INDEX - 30 DAYS CHART

LEBANESE USD SOVEREIGN CURVE


- Prime Minister Saad Hariri said Friday that Arab banks should play a bigger role in the reconstruction drive in the region.
- Telecoms Minister Jamal Jarrah said Friday that “Lebanese people need the internet as much as they need their daily bread” and reiterated his commitments to improve the country’s connectivity.
- Prime Minister Saad Hariri Thursday stressed that his cabinet would do its utmost to protect the Lebanese industry.

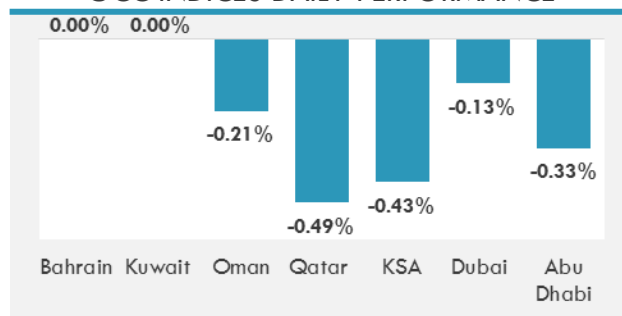
GCC EQUITY INDICES

	Last Price	Daily %	YTD %
Bahrain	1307.09	0.00%	7.37%
Kuwait	6670.47	0.00%	15.84%
Oman	5420.48	-0.21%	-6.26%
Qatar	10061.5	-0.49%	-3.60%
KSA	6853.12	-0.43%	-4.96%
Dubai	3415.69	-0.13%	-3.26%
Abu Dhabi	4593.29	-0.33%	1.03%

MSCI GCC INDEX - 30 DAYS CHART

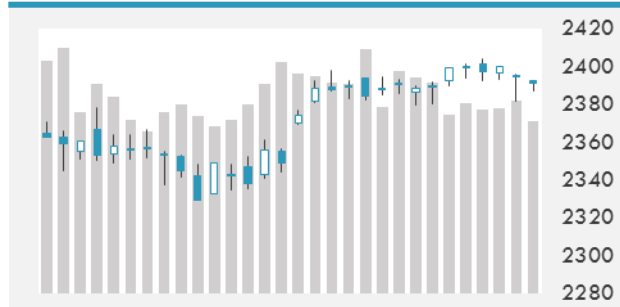
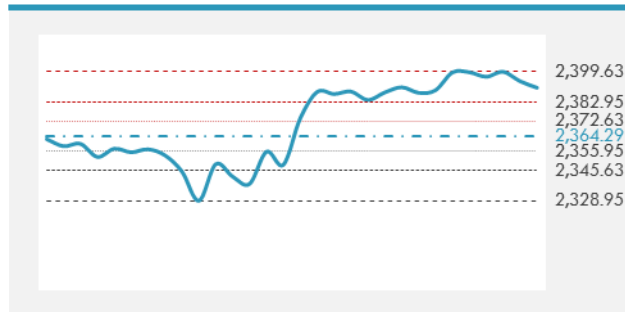
LOCAL/GCC FOREIGN EXCHANGE

	Cross	Last Price
Lebanese Pound Spot	USD/LBP	1510.5
Bahraini Dinar Spot	USD/BHD	0.37702
Kuwaiti Dinar Spot	USD/KWD	0.30449
Omani Rial Spot	USD/OMR	0.38502
Qatari Riyal Spot	USD/QAR	3.6413
Saudi Riyal Spot	USD/SAR	3.7505
UAE Dirham Spot	USD/AED	3.6729

GCC INDICES DAILY PERFORMANCE


UNITED STATES EQUITY MARKET INDICES

	Last Price	Daily %	YTD %	Δ10D Vol
Major Indices				
Dow Jones	20896.61	-0.11%	5.74%	-0.03%
S&P 500	2390.9	-0.15%	6.79%	0.06%
Nasdaq	6121.232	0.09%	13.71%	-1.43%
Sectors Indices				
Discretionary	715.16	-0.18%	10.39%	0.04%
Staples	564.06	-0.24%	6.07%	-0.51%
Energy	497.35	-0.32%	-10.31%	0.05%
Financials	390.45	-0.45%	1.01%	-0.20%
Healthcare	869.16	-0.19%	9.07%	-0.03%
Industrials	567.56	-0.65%	5.48%	0.87%
IT	951.57	0.32%	17.78%	-1.48%
Materials	329.84	-0.17%	5.66%	0.01%
Telecom	157.44	-0.06%	-10.86%	-0.52%
Utilities	261.68	0.51%	6.02%	-0.29%
Real Estate	193.42	-0.38%	1.68%	-0.77%

S&P 500 INDEX - 30 DAYS CHART

S&P 500 SUPPORT & RESISTANCE


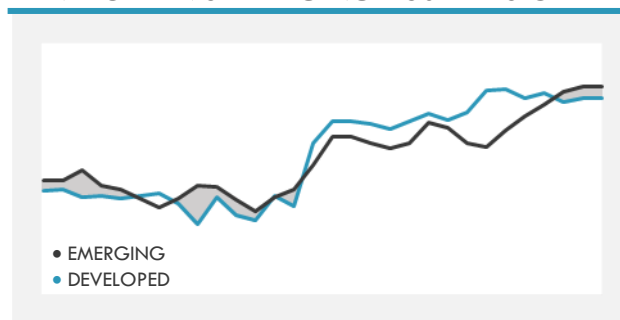
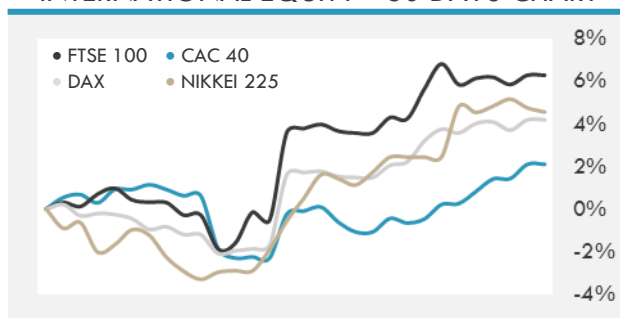
- Japan stocks fell amid concerns on the U.S. economy and North Korea's latest missile launch, as investors digested data from Friday's deluge of corporate earnings.
- U.S. stocks fell, with the S&P 500 Index posting its first back-to-back decline since last month, as April consumer prices and retail sales reports reinforced expectations for tepid economic growth.
- European stocks advanced after their biggest drop since mid-April, as investors searched for fresh triggers for further gains after political risks in France diminished following the victory of Emmanuel Macron.

INTERNATIONAL MARKETS INDICES

	Last Price	Daily %	YTD %	Δ10D Vol
World	1123.38	0.11%	8.96%	-0.08%
Developed	1892.97	0.09%	8.09%	-0.09%
Emerging	1002.37	0.20%	16.25%	0.00%
Frontier	2686.58	0.44%	11.09%	-0.02%
Europe	133.58	0.32%	9.05%	-0.30%
Latin America	2717.66	1.47%	16.11%	0.89%
Asia Pacific	150.84	-0.06%	11.70%	-0.03%

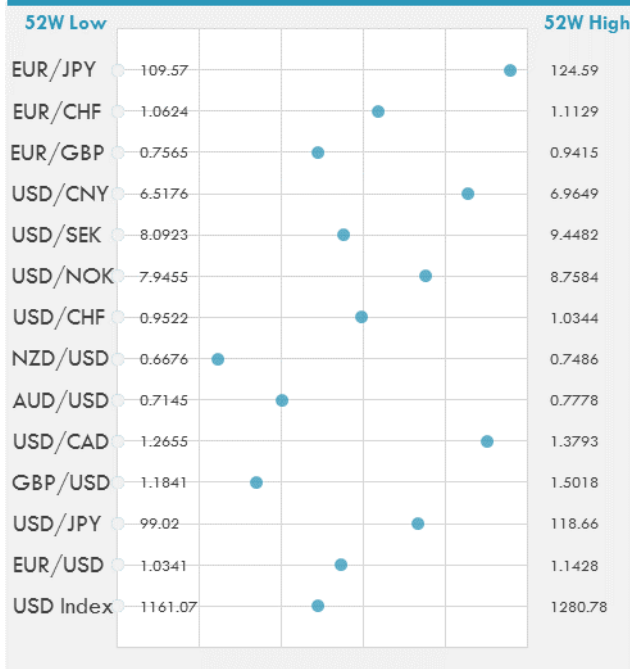
INTERNATIONAL EQUITY INDICES

	Last Price	Daily %	YTD %	Δ10D Vol
EuroStoxx 50	3637.52	0.39%	10.55%	-0.04%
FTSE 100	7435.39	0.66%	4.10%	-1.14%
CAC 40	5405.42	0.41%	11.17%	-0.14%
DAX	12770.41	0.47%	11.23%	-0.14%
Swiss SMI	9123.41	0.65%	10.99%	-0.82%
Nikkei 225	19847.36	-0.18%	3.83%	0.24%
CSI 300	3396.99	0.34%	2.63%	2.64%

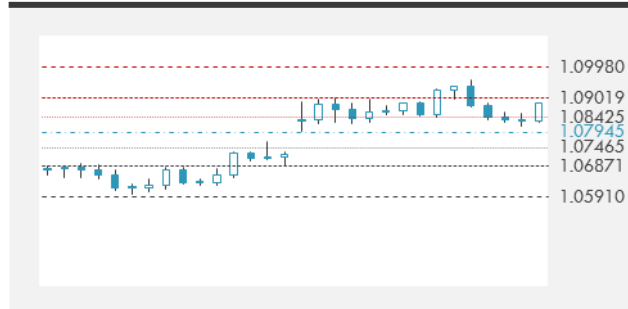
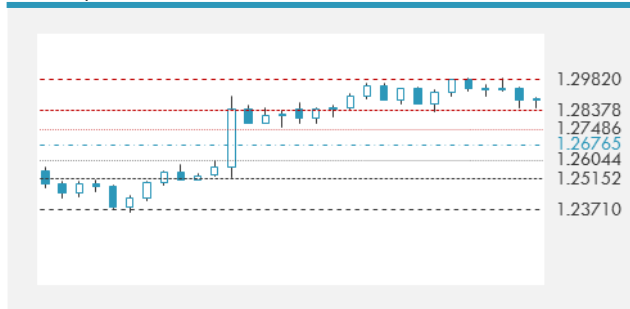
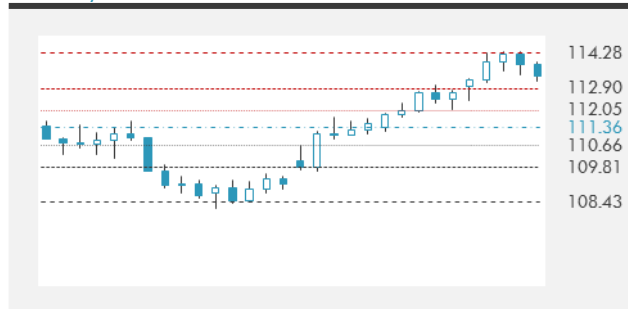
DEVELOPED VS EMERGING - 30 DAYS CHART

INTERNATIONAL EQUITY - 30 DAYS CHART


FOREIGN EXCHANGE MARKET

	Last Price	Daily %	Δ10D	Vol 25	ΔRR
Major Indices					
USD Index	1219.49	-0.05%	-0.02%	-	
EUR/USD	1.0933	0.02%	-0.14%	0.208	
USD/JPY	113.38	0.00%	0.05%	-0.588	
GBP/USD	1.291	0.16%	-0.42%	0.090	
USD/CAD	1.3679	-0.23%	0.03%	0.103	
AUD/USD	0.7399	0.16%	0.03%	-0.468	
NZD/USD	0.6873	0.10%	-0.31%	-0.410	
USD/CHF	1.0011	0.02%	-0.46%	-0.335	
USD/NOK	8.5563	-0.04%	0.00%	0.250	
USD/SEK	8.8391	0.11%	-0.54%	0.275	
USD/CNY	6.8999	0.01%	-0.02%	0.180	
Major EUR Cross Rate					
EUR/GBP	0.84681	-0.10%	-0.02%	0.090	
EUR/CHF	1.09447	0.03%	-0.32%	-0.053	
EUR/JPY	123.96	0.06%	-0.19%	-0.300	

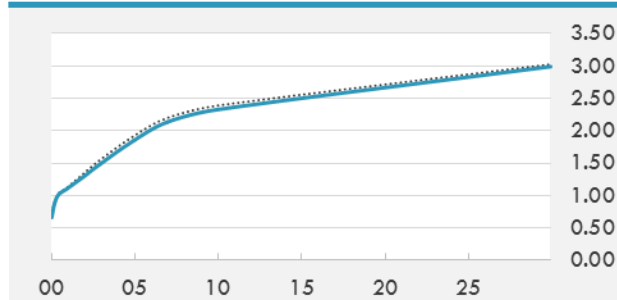
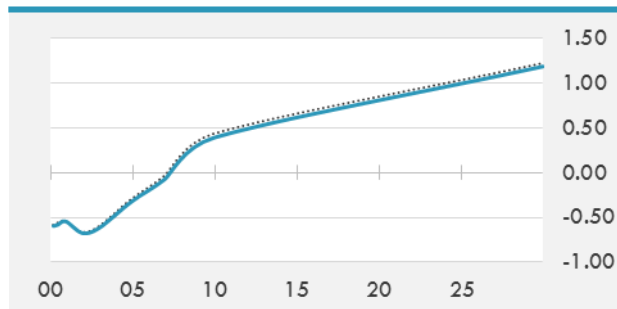
DISTANCE FROM 52 WEEKS LOW/HIGH


- Yen rises for third session to a one-week high as geopolitical concerns intensified after North Korea fired a missile into the Sea of Japan on Sunday.
- The dollar fell for a third day after April U.S. retail sales and consumer price data missed estimates, though the greenback appeared on track for its first weekly gain in five.
- USD/CAD is higher in Europe amid falling oil prices, lingering Home Capital concerns and bounce in U.S. yields from session lows

EUR/USD 30 DAYS SUPPORT & RESISTANCE

GBP/USD 30 DAYS SUPPORT & RESISTANCE

USD/JPY 30 DAYS SUPPORT & RESISTANCE

USD/CAD 30 DAYS SUPPORT & RESISTANCE


GLOBAL BOND INDICES

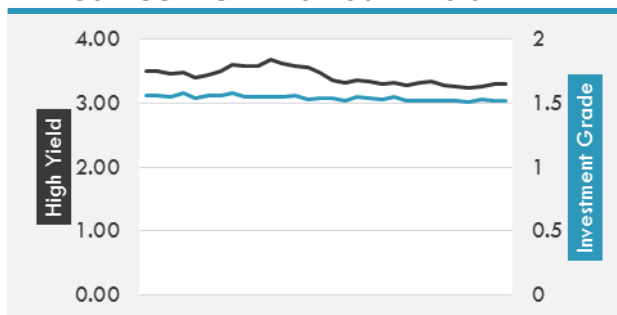
	Yield	ΔYield (in Bps)
Benchmark Indices		
US 10 Years Benchmark	2.3257	-0.062
EU 10 Years Benchmark	0.391	-0.041
UK 10 Years Benchmark	1.086	-0.073
Sovereign Bonds		
US Treasury Bond	1.87	-0.058
Eurozone Sovereign Bond	0.679	-0.025
U.K. Sovereign Bond	1.052	-0.048
Japan Sovereign Bond	0.11	-0.001
USD Emerging Sovereign Bond	4.55	-0.025
Corporate Bonds		
US Investment Grade Bond	3.251	-0.058
US High Yield Bond	5.69	-0.069
EUR Investment Grade Bond	0.691	-0.023
EUR High Yield Bond	2.581	0.031
USD Emerging Market IG & HY	4.683	-0.033

US TREASURIES YIELD CURVE

EUR GENERIC YIELD CURVE


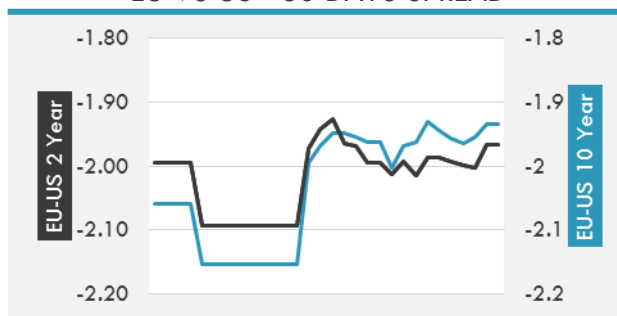
- Rates on one- and three-month Treasury bills continue to drop as investors park cash before the June FOMC, though there's "strong demand throughout the curve as well," Jefferies economists Ward McCarthy and Thomas Simons said in note.
- Bund futures slip from highs after ECB said to start spreading the message from mid-year that there are hardly any downside risks left to economic growth, according to Spiegel magazine, without saying where it got the information.

OVERNIGHT RATES - SWAPS

	Yield	ΔYield (in Bps)
3M USD LIBOR	1.17956	-0.0022
3M EUR EURIBOR	-0.329	0.0000
3M GBP LIBOR	0.314	-0.0006
3Y USD SWAP	1.6889	-0.0622
5Y USD SWAP	1.9155	-0.0650
10Y USD SWAP	2.2506	-0.0584
30Y USD SWAP	2.5277	-0.0382

USD CORPORATES - 30 DAYS SPREAD

FIXED INCOME SPREADS

	Spread	ΔSpread (in Bps)
USD 3M vs 10Y Spread	1.45195	(0.0565)
USD 2Y vs 10Y Spread	1.03123	(0.0174)
USD IG Spread	1.52	(0.0100)
USD HY Spread	3.3	0.0400
EU vs US 10Y Spread	-1.9342	0.0202
EU vs US 2Y Spread	-1.9658	0.0361
EM vs Benchmark Spread	241.7	2.100

EU VS US - 30 DAYS SPREAD


GLOBAL COMMODITIES MARKET

	Last Price	Daily %
Commodity Index	83.48	0.43%

Energy

WTI Crude Future	47.84	0.02%
Brent Crude Future	50.84	0.14%
NYMEX Gasoline	157.61	0.89%
NYMEX Heat Oil	149.33	0.23%
ICE Gasoil	448.75	-0.06%
NYMEX Natural Gas	3.424	1.42%

Precious Metals

Gold Spot \$/Oz	1228.43	0.28%
Silver Spot \$/Oz	16.4672	0.79%
Platinum Spot \$/Oz	921.28	0.31%
Palladium Spot \$/Oz	807.89	0.59%
Gold Future	1227.7	0.29%
Silver Future	16.402	0.84%
Platinum Future	917.5	-0.02%
Palladium Future	803.5	0.57%

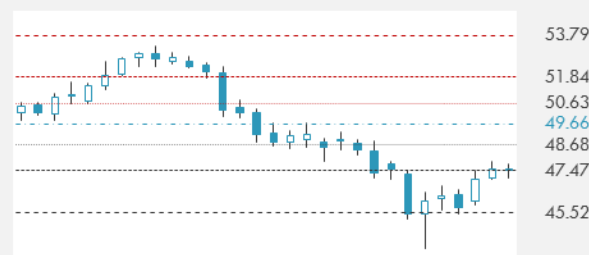
Base Metals

LME Aluminum	1891	0.85%
LME Copper	5560	0.30%
LME Zinc	2554	-1.43%
LME Nickel	9315	0.00%
LME Lead	2126	-2.34%
LME Tin	19845	-0.10%

Agricultural

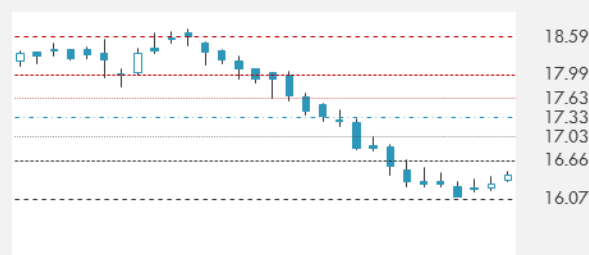
Corn CBT	371	0.47%
Wheat CBT	432.75	-0.23%
Soybeans CBT	963	-0.34%
Bean Meal CBT	313.3	-0.51%
Rough Rice CBT	10.41	-2.16%
MDE Palm Oil	2651	-0.79%
Soybean CBT	32.84	1.08%
Coffee ICE	134.95	0.52%
Sugar #11 ICE	15.51	-0.77%
Cotton #2 ICE	82.18	3.79%
Cocoa ICE	2015	3.23%
Ethanol CME	1.508	1.75%
Lumber CME	364.2	-2.25%
Orange Juice ICE	147.55	1.76%
Live Cattle CME	121.775	1.75%
Feeder Cattle CME	151.825	3.05%
Lean Hogs CME	78.6	1.98%

COMMODITY INDEX SUPPORT & RESISTANCE

WTI OIL 30 DAYS SUPPORT & RESISTANCE


- Saudi Arabia and Russia said they favor extending oil-output cuts by global producers through the end of the first quarter of 2018 to shrink a market glut.
- Gold climbs as investors weigh tepid U.S. economic data and North Korea's firing of a ballistic missile Sunday.

GOLD 30 DAYS SUPPORT & RESISTANCE

SILVER 30 DAYS SUPPORT & RESISTANCE


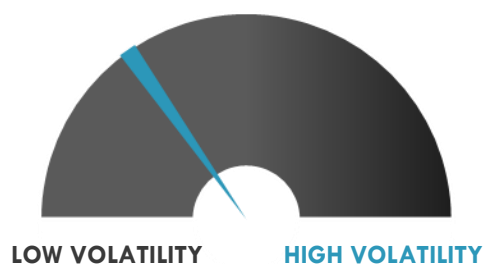
TOP 10 WINNERS

	Ticker	Last Price	Daily %
S&P 500 Stocks			
WYNN RESORTS LTD	WYNN	125.29	2.50
SOUTHWESTRN ENGY	SWN	7.66	2.41
BROADCOM LTD	AVGO	235.96	2.11
EXELON CORP	EXC	34.13	1.88
ARCONIC INC	ARNC	27.7	1.80
MALLINCKRODT	MNK	46.79	1.56
SALESFORCE.COM	CRM	89.04	1.52
AMAZON.COM INC	AMZN	961.35	1.45
NETFLIX INC	NFLX	160.81	1.43
APPLE INC	AAPL	156.1	1.40

TOP 10 LOSERS

	Ticker	Last Price	Daily %
S&P 500 Stocks			
HANESBRANDS INC	HBI	21.44	-3.12
FED REALTY INVS	FRT	125.43	-3.31
JACOBS ENGIN GRP	JEC	52.75	-3.32
QUANTA SERVICES	PWR	32.49	-3.33
MOSAIC CO/THE	MOS	22.91	-3.33
RALPH LAUREN COR	RL	76.4	-3.57
TRANSOCEAN LTD	RIG	10.62	-4.15
URBAN OUTFITTER	URBN	21.61	-6.08
ACUITY BRANDS	AYI	173.43	-8.03
NORDSTROM INC	JWN	41.2	-10.84

S&P 500 DISTRIBUTION

S&P VOLATILITY INDEX


- Wells Fargo is hoping this year to sell MBSs without government guarantees for the first time since the financial crisis, according to the head of the bank's consumer lending division.
- Mexico has sent a stark message to the U.S., saying an upcoming visit by government officials to China showed Latin America's second largest economy had other places to export to if NAFTA gets torn up.
- Looking to boost competitiveness and offset regulatory burdens, Goldman Sachs will launch a new "dark pool" today that's run by exchange operator Nasdaq
- After Kraft Heinz's failed attempt to acquire Unilever and Warren Buffett's defense of the offer, CEO Paul Polman offered a response, adding that Unilever tells a growth story.
- Expedia plans to acquire a majority stake in SilverRail Technologies, Inc. for an undisclosed amount.
- VALE's board has approved a definitive swap ratio of 0.9342 common share per preferred stock as part of a plan to transform into a company with dispersed share ownership.
- Wal-Mart CEO Douglas McMillon is being required by a judge to answer questions in a lawsuit over charges the company bribed government officials in Mexico.
- Amazon plans to build four massive warehouses to help it deliver bulky items like appliances and furniture. The initiative is part of a strategy to expand furniture offerings and speed up delivery times.
- Elon Musk posted pictures of a tunnel being created by Boring Company from the SpaceX headquarters to the Los Angeles International Airport.

KEY ECONOMIC INDICATORS

Country	Event	Surv(M)	Actual	Prior	Time
Bahrain	M1 Money Supply YoY	--	--	-0.62%	
Bahrain	M2 Money Supply YoY	--	--	1.62%	
Bahrain	M3 Money Supply YoY	--	--	1.11%	
China	Industrial Production YoY	7.00%	6.50%	7.60%	5:00
China	Retail Sales YoY	10.80%	10.70%	10.90%	5:00
China	Industrial Production YTD YoY	6.90%	6.70%	6.80%	5:00
China	Fixed Assets Ex Rural YTD YoY	9.10%	8.90%	9.20%	5:00
China	Retail Sales YTD YoY	10.20%	10.20%	10.00%	5:00
Germany	Merkel to Speak				14:15
Italy	CPI EU Harmonized YoY	2.00%	--	2.00%	11:00
Japan	PPI YoY	1.80%	2.10%	1.40%	2:50
Japan	Machine Tool Orders YoY	--	--	22.80%	9:00
Japan	PPI MoM	-0.10%	0.20%	0.20%	2:50
Oman	Budget Balance Month	--	--	-326.1m	
Qatar	CPI YoY	--	--	0.90%	
United Kingdom	U.K. PM Theresa May Answers				17:00
United States	Empire Manufacturing	7.3	--	5.2	15:30
United States	Net Long-term TIC Flows	--	--	\$53.4b	23:00
United States	Total Net TIC Flows	--	--	\$19.3b	23:00
United States	NAHB Housing Market Index	68	--	68	17:00

Banque BEMO sal
Head Office - Private and Corporate Banking

96 Pasteur Building, Pasteur Street, Medawar Area, P.O. Box: 16-6353, Beirut - Lebanon
 Tel: + 961 1 568 250 Fax: + 961 1 568 266

Investment & Research research@bemobank.com

Beirut Central District Riad El Solh Square, Esseily Building Bloc A, 7th Floor Beirut - Lebanon
 Tel: + 961 1 992 600 Fax: + 961 1 983 368
www.bemobank.com

Disclaimer:

This report is published for information purposes only. The information herein has been compiled from, or based upon sources considered to be reliable (Bloomberg, SeekingAlpha, DailyStar...), but we do not guarantee or assume responsibility for its completeness and accuracy. This document should not be construed as a solicitation to take part in any investment, or as constituting any representation or warranty on our part. This report is not to be relied upon in substitution for the exercise of specialists.

We may not have taken any steps to ensure that the securities referred to in this report are suitable for any particular investor. The investments and services contained or referred to herein are not purported to be exhaustive, any person considering an investment should seek specialist advice on the suitability of an investment.

Nothing in this report constitutes investment, legal, accounting or tax advice, or a representation that any investment or strategy is suitable or appropriate to your individual circumstances, or otherwise constitutes a personal recommendation. Clients understand that it is their responsibility to seek legal and/or tax advice regarding the legal and tax consequences of their investment transactions. The consequences of any action taken on the basis of information contained herein are solely the responsibility of the recipient.

Investment instruments are subject to risk, including possible loss of principal amount invested. Past performance should not be taken as an indication or guarantee of future performance, and no representation or warranty, express or implied, is made regarding future performance. The value of securities and financial instruments is subject to exchange rate fluctuation that may have a positive or adverse effect on the price or income of such securities or financial instruments. Some investments mentioned in this report may have a high level of volatility. High volatility investments may experience sudden and large falls in their value causing losses when that investment is realized. Some investments may not be readily realizable and it may be difficult to sell or realize those investments, similarly it may prove difficult to obtain reliable information about the value, or risks, to which such an investment is exposed.

This report may provide the addresses of websites or references. We have not reviewed any such site and takes no responsibility for the content contained therein. Such address or reference is provided solely for convenience and information. Accessing such website through this report shall be at the recipients own risk.