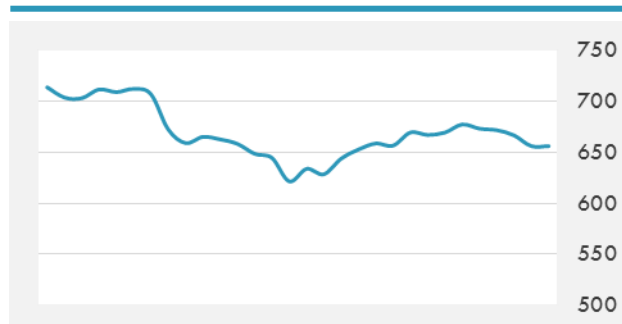
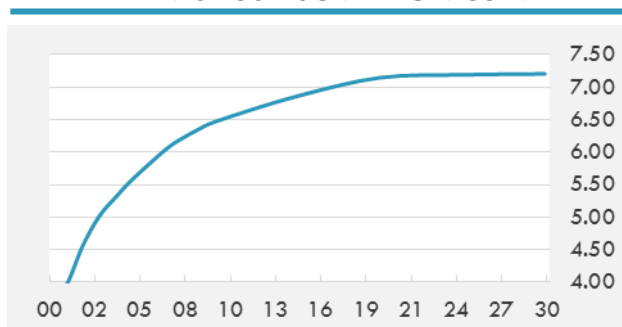


BEIRUT STOCK EXCHANGE

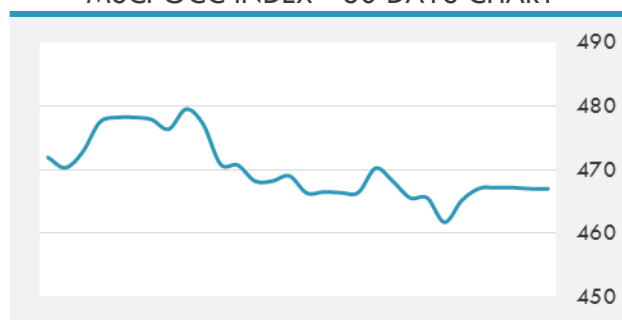
	Last	Daily %	YTD %	Dividend %
Development and Reconstruction				
Solidere A	9	-1.64%	-13.29%	1.13%
Solidere B	8.8	-2.87%	-16.19%	1.13%
Solidere GDR	9.12	-1.41%	-8.80%	1.12%
Banking				
Audi Listed	6.39	0.00%	-6.03%	7.91%
BLC Listed	0.99	0.00%	0.00%	0.00%
BOB Listed	18.8	0.00%	0.00%	3.52%
Byblos Listed	1.62	0.00%	-4.71%	8.02%
BEMO Listed	1.7	0.00%	0.00%	2.33%
BLOM Listed	10.7	0.00%	0.94%	9.21%
Trading				
RYMCO	3.25	0.00%	0.00%	3.69%
Industrial				
Holcim	11.9	0.00%	1.28%	7.12%
Ciments Blancs	1.57	0.00%	0.00%	0.00%

MSCI LEBANON INDEX - 30 DAYS CHART

LEBANESE USD SOVEREIGN CURVE


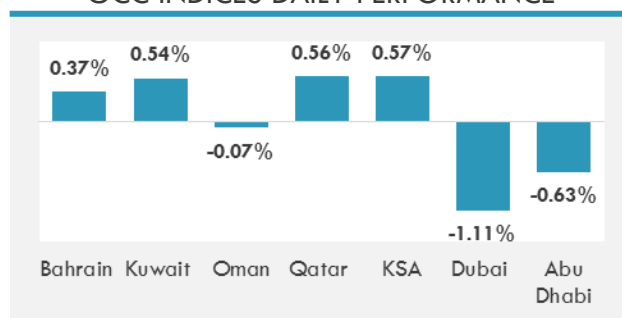
- The government must give incentives to investors to list on the Beirut Stock Exchange if it wants to grow the capital market, capital markets experts said Monday.
- Lebanon's Central Bank assured the public Monday that all regular online operations are running smoothly after the IT department foiled an email cyberattack.
- Oman's listed companies have reported a drop in profit at OMR142 million for the first quarter of 2017, down from OMR218 million in the same period of last year.

GCC EQUITY INDICES

	Last Price	Daily %	YTD %
Bahrain	1311.98	0.37%	7.50%
Kuwait	6706.25	0.54%	16.83%
Oman	5416.47	-0.07%	-6.33%
Qatar	10118.13	0.56%	-3.05%
KSA	6891.99	0.57%	-4.42%
Dubai	3377.82	-1.11%	-4.41%
Abu Dhabi	4564.31	-0.63%	0.60%

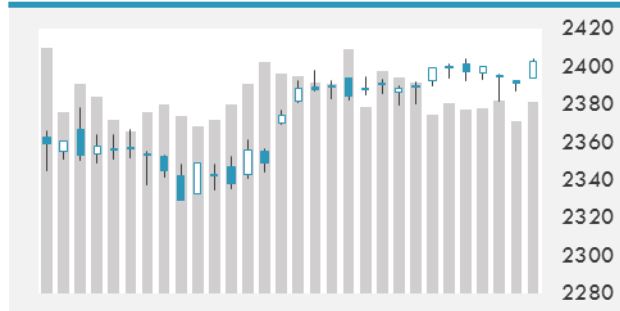
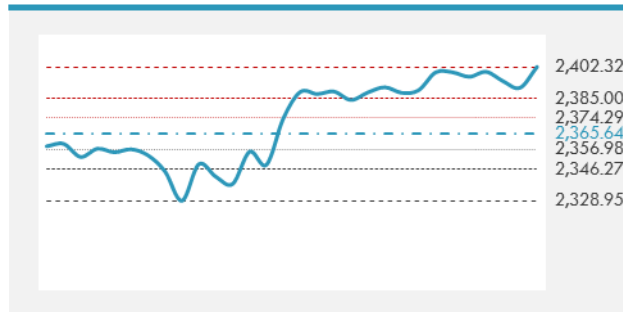
MSCI GCC INDEX - 30 DAYS CHART

LOCAL/GCC FOREIGN EXCHANGE

	Cross	Last Price
Lebanese Pound Spot	USD/LBP	1511.5
Bahraini Dinar Spot	USD/BHD	0.37702
Kuwaiti Dinar Spot	USD/KWD	0.30435
Omani Rial Spot	USD/OMR	0.38502
Qatari Riyal Spot	USD/QAR	3.6414
Saudi Riyal Spot	USD/SAR	3.7502
UAE Dirham Spot	USD/AED	3.6729

GCC INDICES DAILY PERFORMANCE


UNITED STATES EQUITY MARKET INDICES

	Last Price	Daily %	YTD %	Δ10D Vol
Major Indices				
Dow Jones	20981.94	0.41%	6.17%	0.77%
S&P 500	2402.32	0.48%	7.30%	0.87%
Nasdaq	6149.674	0.46%	14.24%	0.58%
Sectors Indices				
Discretionary	715.06	-0.01%	10.38%	-0.12%
Staples	566.26	0.39%	6.48%	-0.73%
Energy	500.45	0.62%	-9.75%	0.02%
Financials	393.47	0.77%	1.79%	1.48%
Healthcare	874.29	0.59%	9.71%	0.71%
Industrials	570.14	0.45%	5.96%	-0.21%
IT	956.88	0.56%	18.43%	0.51%
Materials	332.62	0.84%	6.55%	0.95%
Telecom	157.06	-0.24%	-11.07%	0.01%
Utilities	262.63	0.36%	6.40%	0.12%
Real Estate	194.08	0.34%	2.02%	0.32%

S&P 500 INDEX - 30 DAYS CHART

S&P 500 SUPPORT & RESISTANCE


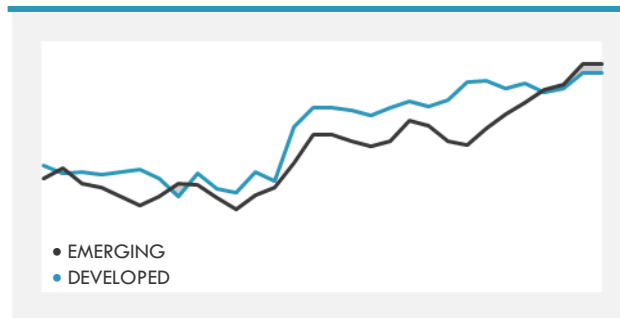
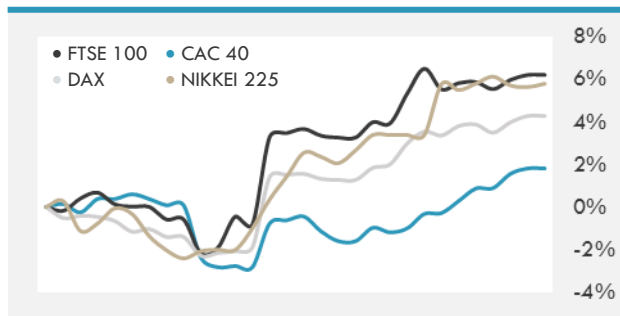
- U.S. stocks climbed after equities posted their first back-to-back drop in almost a month, as commodity prices advanced and financial shares rallied.
- European stocks closed little changed as a rally in commodity and energy producers offset losses in drug makers and media companies.
- Chinese shares traded in Hong Kong advanced a sixth straight session as spending plans unveiled by the government overshadowed data showing a slowdown in factory output and investment. Stocks in Tokyo and Australia slid.

INTERNATIONAL MARKETS INDICES

	Last Price	Daily %	YTD %	Δ10D Vol
World	1128.92	0.49%	9.49%	0.56%
Developed	1901.64	0.46%	8.59%	0.50%
Emerging	1010.23	0.78%	17.16%	-0.18%
Frontier	2693.17	0.25%	11.36%	-0.17%
Europe	133.7	0.09%	9.15%	-0.53%
Latin America	2751.4	1.24%	17.55%	-0.73%
Asia Pacific	151.13	0.19%	11.91%	-0.15%

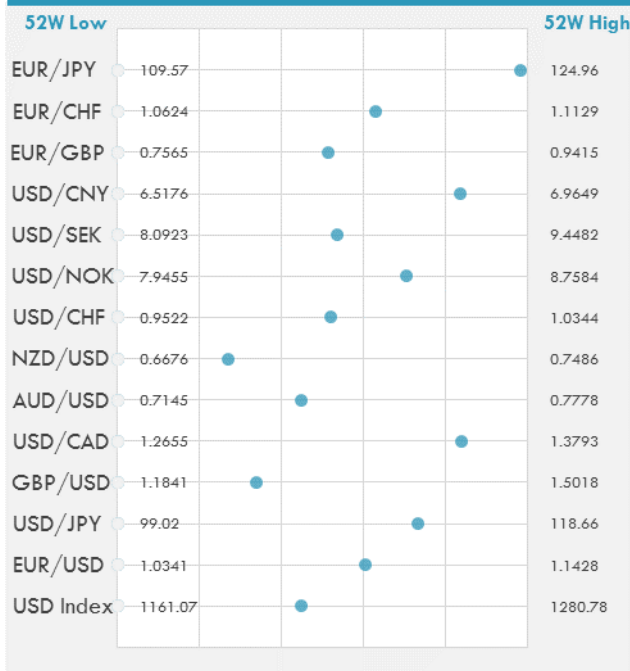
INTERNATIONAL EQUITY INDICES

	Last Price	Daily %	YTD %	Δ10D Vol
EuroStoxx 50	3641.88	0.12%	10.68%	-0.14%
FTSE 100	7454.37	0.26%	4.36%	-0.27%
CAC 40	5417.4	0.22%	11.42%	-0.27%
DAX	12807.04	0.29%	11.55%	-0.20%
Swiss SMI	9108.25	-0.17%	10.81%	0.38%
Nikkei 225	19898.7	0.15%	4.10%	-0.14%
CSI 300	3402.98	0.11%	2.81%	0.42%

DEVELOPED VS EMERGING - 30 DAYS CHART

INTERNATIONAL EQUITY - 30 DAYS CHART


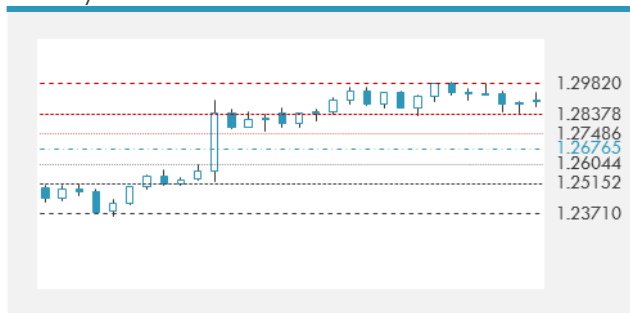
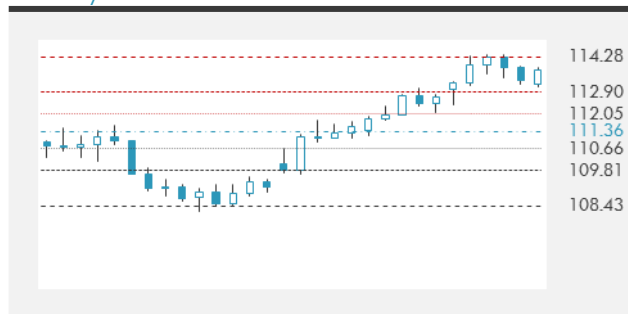
FOREIGN EXCHANGE MARKET

	Last Price	Daily %	Δ10D	Vol 25	ΔRR
Major Indices					
USD Index	1214.76	-0.19%	-0.38%	-	
EUR/USD	1.0997	0.20%	-0.42%	0.290	
USD/JPY	113.38	-0.36%	-0.19%	-0.628	
GBP/USD	1.2915	0.15%	-0.92%	0.023	
USD/CAD	1.361	-0.17%	-0.12%	0.023	
AUD/USD	0.7428	0.20%	-4.14%	-0.425	
NZD/USD	0.6895	0.20%	-0.92%	-0.348	
USD/CHF	0.9950	-0.16%	-0.08%	-0.450	
USD/NOK	8.5163	-0.45%	-0.96%	0.113	
USD/SEK	8.8169	-0.16%	-0.57%	0.280	
USD/CNY	6.8913	-0.03%	-0.04%	0.400	
Major EUR Cross Rate					
EUR/GBP	0.85146	0.05%	-0.01%	0.110	
EUR/CHF	1.09419	0.04%	-0.19%	-0.093	
EUR/JPY	124.68	-0.16%	0.32%	-0.255	

DISTANCE FROM 52 WEEKS LOW/HIGH


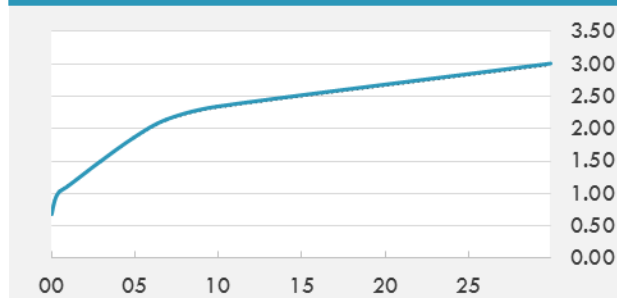
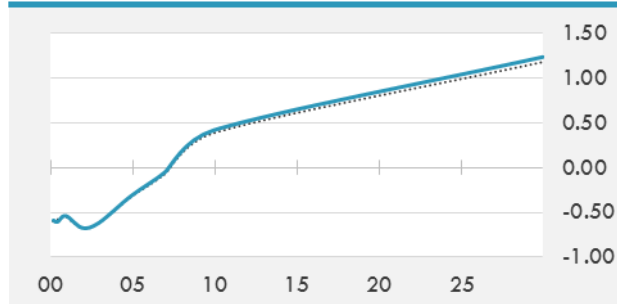
- The dollar fell for a fifth day as Donald Trump's top foreign policy advisers tried to control the political damage following a report the U.S. president revealed classified information to Russia's diplomat last week.
- EUR/USD rises to its strongest level since Nov. 9; leveraged and macro names have added fresh longs this week.

EUR/USD 30 DAYS SUPPORT & RESISTANCE

GBP/USD 30 DAYS SUPPORT & RESISTANCE

USD/JPY 30 DAYS SUPPORT & RESISTANCE

USD/CAD 30 DAYS SUPPORT & RESISTANCE


GLOBAL BOND INDICES

	Yield	ΔYield (in Bps)
Benchmark Indices		
US 10 Years Benchmark	2.3433	0.018
EU 10 Years Benchmark	0.42	0.029
UK 10 Years Benchmark	1.138	0.052
Sovereign Bonds		
US Treasury Bond	1.873	0.003
Eurozone Sovereign Bond	0.693	0.014
U.K. Sovereign Bond	1.097	0.045
Japan Sovereign Bond	0.103	-0.007
USD Emerging Sovereign Bond	4.532	-0.018
Corporate Bonds		
US Investment Grade Bond	3.246	-0.005
US High Yield Bond	5.654	-0.036
EUR Investment Grade Bond	0.705	0.014
EUR High Yield Bond	2.578	-0.003
USD Emerging Market IG & HY	4.674	-0.009

US TREASURIES YIELD CURVE

EUR GENERIC YIELD CURVE


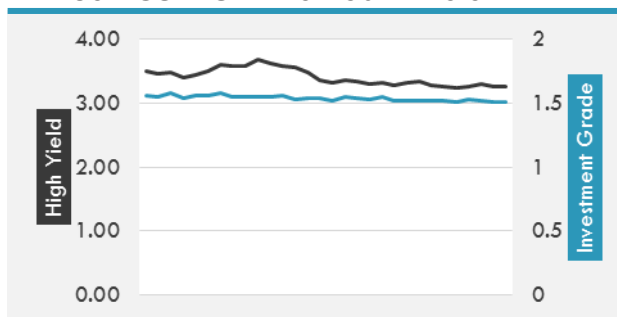
- Treasuries were pressured over the U.S. session after energy sector-led stocks pushed equities higher from the cash open a robust Investment Grade issuance slate -- including a raft of 30Y deals -- dragged on the long-end of the curve.
- Bund futures open little changed, with Treasuries underpinned through Asian hours. Core curves can continue to steepen with potentially large duration supply ahead via syndications; France 30y, Gilt 40y, EFSF may be waiting in the wings, while speculation of a Belgium issue continue to grow.

OVERNIGHT RATES - SWAPS

	Yield	ΔYield (in Bps)
3M USD LIBOR	1.17956	0.0000
3M EUR EURIBOR	-0.329	0.0000
3M GBP LIBOR	0.314	0.0000
3Y USD SWAP	1.6849	-0.0040
5Y USD SWAP	1.9129	-0.0026
10Y USD SWAP	2.2553	0.0047
30Y USD SWAP	2.5295	0.0018

FIXED INCOME SPREADS

	Spread	ΔSpread (in Bps)
USD 3M vs 10Y Spread	1.46445	0.0125
USD 2Y vs 10Y Spread	1.04062	0.0094
USD IG Spread	1.51	(0.0100)
USD HY Spread	3.26	(0.0400)
EU vs US 10Y Spread	-1.9292	0.0050
EU vs US 2Y Spread	-1.9755	(0.0097)
EM vs Benchmark Spread	240.7	(1.000)

USD CORPORATES - 30 DAYS SPREAD

EU VS US - 30 DAYS SPREAD


GLOBAL COMMODITIES MARKET

	Last Price	Daily %
Commodity Index	83.58	0.11%

Energy

WTI Crude Future	48.85	2.11%
Brent Crude Future	51.82	1.93%
NYMEX Gasoline	159.54	1.22%
NYMEX Heat Oil	150.96	1.09%
ICE Gasoil	459	2.28%
NYMEX Natural Gas	3.349	-2.19%

Precious Metals

Gold Spot \$/Oz	1230.82	0.19%
Silver Spot \$/Oz	16.633	1.01%
Platinum Spot \$/Oz	929.4	0.88%
Palladium Spot \$/Oz	796.77	-1.38%
Gold Future	1230	0.19%
Silver Future	16.603	1.23%
Platinum Future	928.7	1.22%
Palladium Future	797	-0.81%

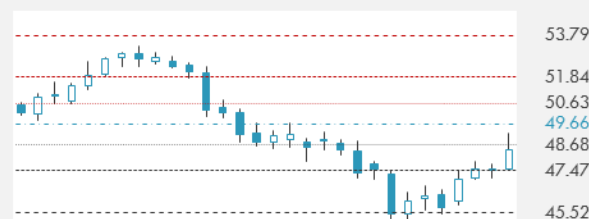
Base Metals

LME Aluminum	1906	0.77%
LME Copper	5613	0.96%
LME Zinc	2571	0.67%
LME Nickel	9235	-0.86%
LME Lead	2135	0.42%
LME Tin	19875	0.15%

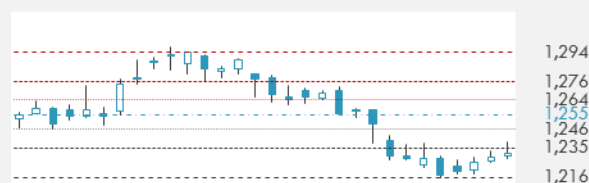
Agricultural

Corn CBT	367.75	-0.88%
Wheat CBT	423.25	-2.20%
Soybeans CBT	965.25	0.23%
Bean Meal CBT	312.5	-0.26%
Rough Rice CBT	10.63	2.11%
MDE Palm Oil	2684	1.24%
Soybean CBT	33.02	0.55%
Coffee ICE	133.45	-1.11%
Sugar #11 ICE	15.61	0.64%
Cotton #2 ICE	85.32	3.82%
Cocoa ICE	2041	1.29%
Ethanol CME	1.507	-0.07%
Lumber CME	373.4	2.53%
Orange Juice ICE	144.25	-2.24%
Live Cattle CME	118.8	-2.44%
Feeder Cattle CME	149.275	-1.68%
Lean Hogs CME	78.35	-0.32%

COMMODITY INDEX SUPPORT & RESISTANCE

WTI OIL 30 DAYS SUPPORT & RESISTANCE


- Oil rode its longest rising streak in more than a month as a proposal by the world's two biggest crude producers to extend output curbs into 2018 boosted confidence that other nations will follow suit.
- Gold edges higher for fourth straight session as the dollar eases further.

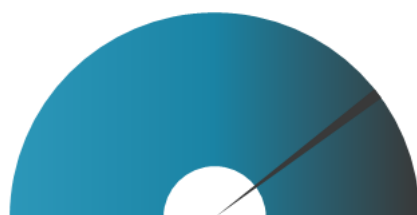
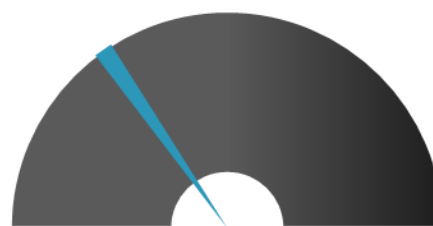
GOLD 30 DAYS SUPPORT & RESISTANCE

SILVER 30 DAYS SUPPORT & RESISTANCE


TOP 10 WINNERS

	Ticker	Last Price	Daily %
S&P 500 Stocks			
FRONTIER COMMUNI	FTR	1.29	6.61
QORVO INC	QRVO	71.54	5.52
NVIDIA CORP	NVDA	134.31	5.02
NETAPP INC	NTAP	41.5	4.43
TEGNA INC	TGNA	23.52	3.80
CF INDUSTRIES HO	CF	27.74	3.58
SYMANTEC CORP	SYMC	32	3.19
HALLIBURTON CO	HAL	46.51	3.04
AUTONATION INC	AN	40.54	3.00
CARMAX INC	KMX	61.14	2.95

TOP 10 LOSERS

	Ticker	Last Price	Daily %
S&P 500 Stocks			
CSX CORP	CSX	51.34	-1.53
MACY'S INC	M	23.21	-1.69
WW GRAINGER INC	GWV	181.38	-1.75
ROSS STORES INC	ROST	62.35	-1.80
COTY INC-CL A	COTY	19.17	-2.09
HARLEY-DAVIDSON	HOG	54.04	-2.12
FOOT LOCKER INC	FL	73.21	-2.23
VIACOM INC-B	VIAB	33.76	-2.46
URBAN OUTFITTER	URBN	20.95	-3.05
SOUTHWESTRN ENGY	SWN	7.33	-4.31

S&P 500 DISTRIBUTION

WINNERS
LOSERS
S&P VOLATILITY INDEX

LOW VOLATILITY
HIGH VOLATILITY

- Potentially derailing a much-needed capital injection, Western Digital is seeking international arbitration to stop partner Toshiba from selling its chips unit without consent.
- SpaceX is aiming to launch a fourth Inmarsat-5 satellite into space tonight, marking the heaviest load lofted by a Falcon 9 rocket to date.
- Merkel scores big in key election, centrists are well-positioned to be in charge of Europe's two largest economies for the foreseeable future.
- As has been rumored for some time, AIG has named Hamilton Insurance Group CEO Brian Duperreault as president, CEO, and board member, effective yesterday.
- When Boeing was developing the latest iteration of its most popular jet, it devised a modified version with an extra emergency door that allowed it to add seven more seats.
- General Motors jumped to third place in the annual ranking of supplier relations posted in the North American Automotive OEM - Supplier Working Relations Index Study.
- "We're not trying to be the catalog of everything," says Target Chief Information and Digital Officer Mike McNamara. "We aren't going to add products to our website and stores just because they exist," he adds.
- ESPN is changing up its flagship news brand, SportsCenter, in an attempt to broaden its reach beyond cable television, Yahoo News reports.
- Toyota is joining forces with a group of related startups working on flying car development. The company has backed the Cartivator team with a small investment of ¥40M and allowing some of its engineers to work on the project.

KEY ECONOMIC INDICATORS

Country	Event	Surv(M)	Actual	Prior	Time
Bahrain	M1 Money Supply YoY	--	--	-0.62%	
Eurozone	GDP SA QoQ	0.50%	--	0.50%	12:00
Eurozone	GDP SA YoY	1.70%	--	1.70%	12:00
France	CPI YoY	1.20%	1.20%	1.20%	9:45
France	CPI EU Harmonized YoY	1.40%	1.40%	1.40%	9:45
France	CPI MoM	0.10%	0.10%	0.10%	9:45
Germany	ZEW Survey Expectations	22	--	19.5	12:00
Germany	ZEW Survey Current Situation	82	--	80.1	12:00
Italy	GDP WDA QoQ	0.20%	--	0.20%	11:00
Italy	GDP WDA YoY	0.80%	--	1.00%	11:00
Japan	Tertiary Industry Index MoM	0.10%	-0.20%	0.20%	7:30
Saudi Arabia	CPI YoY	--	-0.60%	-0.40%	8:59
United Kingdom	CPI YoY	2.60%	--	2.30%	11:30
United Kingdom	CPI MoM	0.40%	--	0.40%	11:30
United Kingdom	CPI Core YoY	2.30%	--	1.80%	11:30
United Kingdom	PPI Output NSA MoM	0.20%	--	0.40%	11:30
United Kingdom	PPI Output NSA YoY	3.40%	--	3.60%	11:30
United Kingdom	RPI MoM	0.40%	--	0.30%	11:30
United States	Industrial Production MoM	0.40%	--	0.50%	16:15
United States	Housing Starts	1260k	--	1215k	15:30

Banque BEMO sal
Head Office - Private and Corporate Banking

96 Pasteur Building, Pasteur Street, Medawar Area, P.O. Box: 16-6353, Beirut - Lebanon
 Tel: + 961 1 568 250 Fax: + 961 1 568 266

Investment & Research research@bemobank.com

Beirut Central District Riad El Solh Square, Esseily Building Bloc A, 7th Floor Beirut - Lebanon
 Tel: + 961 1 992 600 Fax: + 961 1 983 368
www.bemobank.com

Disclaimer:

This report is published for information purposes only. The information herein has been compiled from, or based upon sources considered to be reliable (Bloomberg, SeekingAlpha, DailyStar...), but we do not guarantee or assume responsibility for its completeness and accuracy. This document should not be construed as a solicitation to take part in any investment, or as constituting any representation or warranty on our part. This report is not to be relied upon in substitution for the exercise of specialists.

We may not have taken any steps to ensure that the securities referred to in this report are suitable for any particular investor. The investments and services contained or referred to herein are not purported to be exhaustive, any person considering an investment should seek specialist advice on the suitability of an investment.

Nothing in this report constitutes investment, legal, accounting or tax advice, or a representation that any investment or strategy is suitable or appropriate to your individual circumstances, or otherwise constitutes a personal recommendation. Clients understand that it is their responsibility to seek legal and/or tax advice regarding the legal and tax consequences of their investment transactions. The consequences of any action taken on the basis of information contained herein are solely the responsibility of the recipient.

Investment instruments are subject to risk, including possible loss of principal amount invested. Past performance should not be taken as an indication or guarantee of future performance, and no representation or warranty, express or implied, is made regarding future performance. The value of securities and financial instruments is subject to exchange rate fluctuation that may have a positive or adverse effect on the price or income of such securities or financial instruments. Some investments mentioned in this report may have a high level of volatility. High volatility investments may experience sudden and large falls in their value causing losses when that investment is realized. Some investments may not be readily realizable and it may be difficult to sell or realize those investments, similarly it may prove difficult to obtain reliable information about the value, or risks, to which such an investment is exposed.

This report may provide the addresses of websites or references. We have not reviewed any such site and takes no responsibility for the content contained therein. Such address or reference is provided solely for convenience and information. Accessing such website through this report shall be at the recipients own risk.