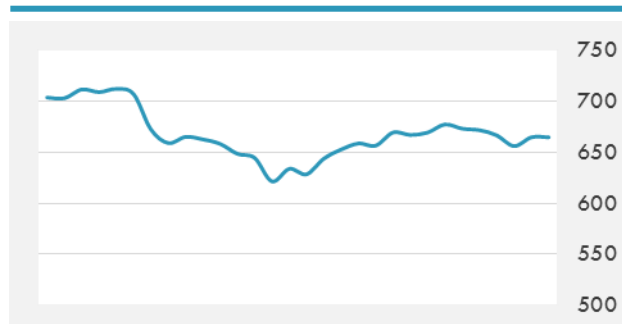
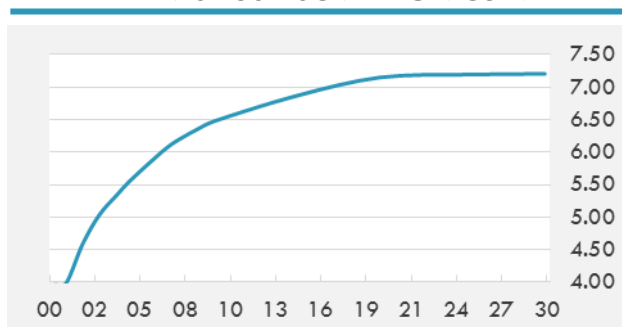


BEIRUT STOCK EXCHANGE

	Last	Daily %	YTD %	Dividend %
Development and Reconstruction				
Solidere A	8.93	2.76%	-13.97%	1.11%
Solidere B	8.9	4.71%	-15.24%	1.11%
Solidere GDR	8.82	0.00%	-11.80%	1.12%
Banking				
Audi Listed	6.3	0.00%	-7.35%	7.94%
BLC Listed	0.99	0.00%	0.00%	0.00%
BOB Listed	18.8	0.00%	0.00%	3.52%
Byblos Listed	1.61	-3.01%	-5.29%	8.17%
BEMO Listed	1.7	0.00%	0.00%	2.33%
BLOM Listed	10.72	0.19%	1.13%	9.24%
Trading				
RYMCO	3.25	0.00%	0.00%	3.69%
Industrial				
Holcim	11.25	-5.46%	-4.26%	7.53%
Ciments Blancs	1.57	0.00%	0.00%	0.00%

MSCI LEBANON INDEX - 30 DAYS CHART

LEBANESE USD SOVEREIGN CURVE


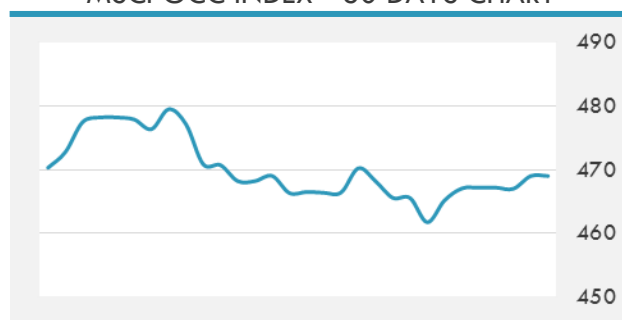
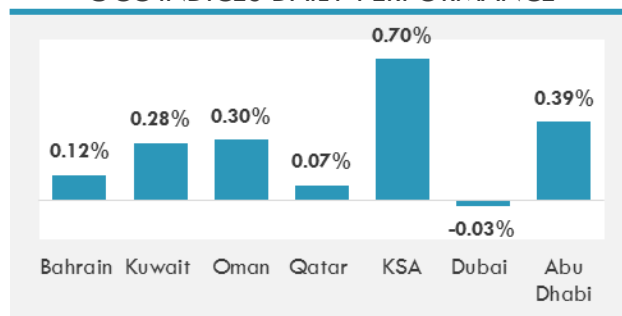
- Economy Minister Raed Khoury emphasized Tuesday the importance of encouraging the creation of small and medium enterprises to grow the economy.
- Central Bank Gov. Riad Salameh said Lebanese who invested in the U.K.'s stocks and real estate incurred losses after Brexit.
- The parliamentary Budget and Finance Committee Tuesday approved some of the tax items mentioned in the 2017 draft budget but expressed deep reservations on other proposed taxes.

GCC EQUITY INDICES

	Last Price	Daily %	YTD %
Bahrain	1313.59	0.12%	7.63%
Kuwait	6725.3	0.28%	16.97%
Oman	5432.61	0.30%	-6.05%
Qatar	10125.44	0.07%	-2.98%
KSA	6940.48	0.70%	-3.74%
Dubai	3376.75	-0.03%	-4.48%
Abu Dhabi	4582.07	0.39%	0.97%

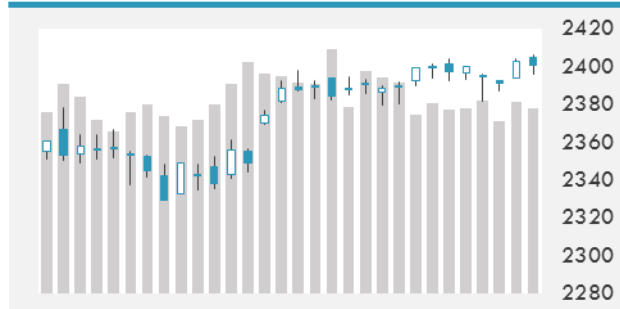
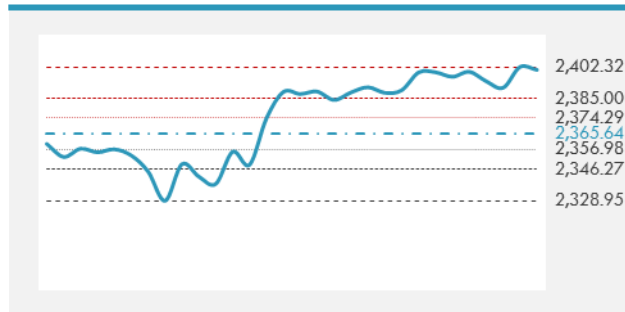
LOCAL/GCC FOREIGN EXCHANGE

	Cross	Last Price
Lebanese Pound Spot	USD/LBP	1512
Bahraini Dinar Spot	USD/BHD	0.37702
Kuwaiti Dinar Spot	USD/KWD	0.30398
Omani Rial Spot	USD/OMR	0.38499
Qatari Riyal Spot	USD/QAR	3.6414
Saudi Riyal Spot	USD/SAR	3.7502
UAE Dirham Spot	USD/AED	3.673

MSCI GCC INDEX - 30 DAYS CHART

GCC INDICES DAILY PERFORMANCE


UNITED STATES EQUITY MARKET INDICES

	Last Price	Daily %	YTD %	Δ10D Vol
Major Indices				
Dow Jones	20979.75	-0.01%	6.16%	0.00%
S&P 500	2400.67	-0.07%	7.23%	-0.07%
Nasdaq	6169.87	0.33%	14.62%	-0.92%
Sectors Indices				
Discretionary	712.73	-0.33%	10.02%	-0.55%
Staples	565.22	-0.18%	6.29%	0.22%
Energy	498.24	-0.44%	-10.15%	0.19%
Financials	394.13	0.17%	1.97%	-0.75%
Healthcare	870.89	-0.39%	9.28%	0.02%
Industrials	569.42	-0.13%	5.83%	0.01%
IT	961.62	0.50%	19.02%	-0.34%
Materials	332.6	-0.01%	6.55%	-1.38%
Telecom	156.11	-0.60%	-11.61%	-0.05%
Utilities	260.53	-0.80%	5.55%	0.85%
Real Estate	193.06	-0.53%	1.49%	-2.02%

S&P 500 INDEX - 30 DAYS CHART

S&P 500 SUPPORT & RESISTANCE


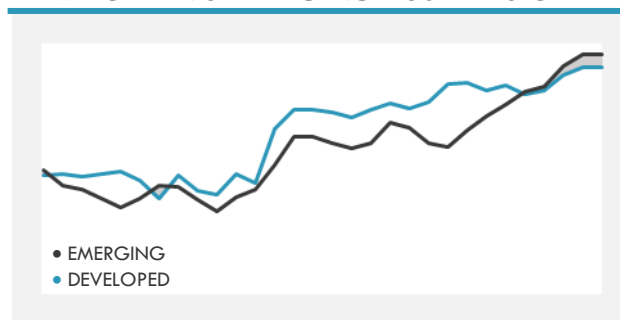
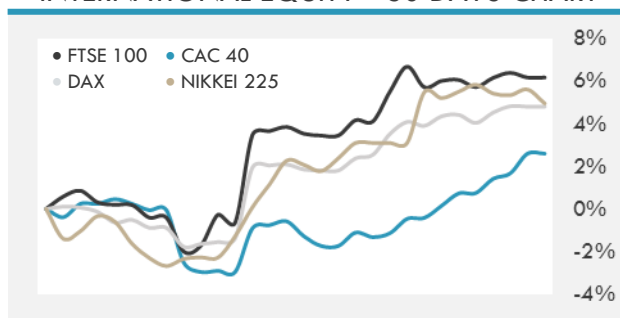
- U.S. stocks were little changed, with the S&P 500 Index slipping from a record as utility and phone companies' shares reversed earlier gains to end lower.
- European stocks ended the session little changed near a 21-month high as investors assessed a mix of earnings reports from companies including EasyJet Plc and Vodafone Group Plc.
- Asian shares rose, throwing off morning weakness as Japanese shares climbed for the first time in three days while Chinese stocks erased declines in afternoon trading.

INTERNATIONAL MARKETS INDICES

	Last Price	Daily %	YTD %	Δ10D Vol
World	1131.94	0.27%	9.79%	-0.31%
Developed	1906.23	0.24%	8.85%	-0.22%
Emerging	1015.05	0.48%	17.72%	-0.55%
Frontier	2691.3	-0.07%	11.29%	-0.13%
Europe	133.71	0.01%	9.15%	-0.01%
Latin America	2761.44	0.36%	17.98%	-1.17%
Asia Pacific	151.9	0.51%	12.48%	-0.04%

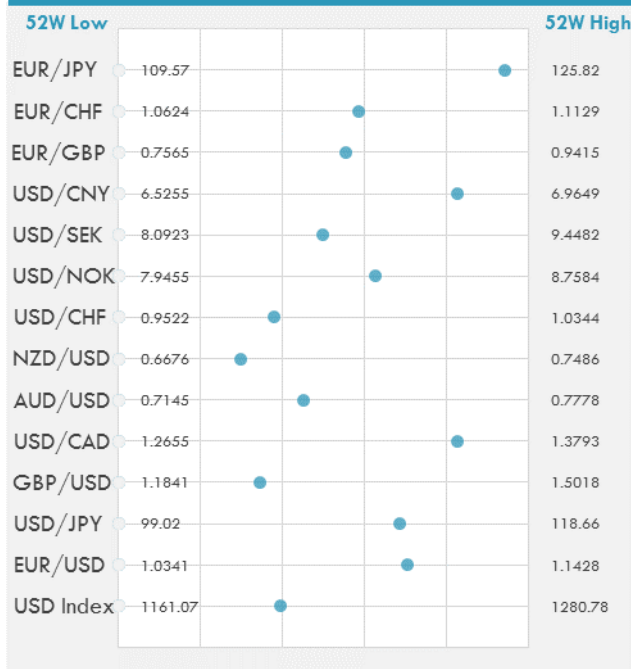
INTERNATIONAL EQUITY INDICES

	Last Price	Daily %	YTD %	Δ10D Vol
EuroStoxx 50	3641.89	0.00%	10.68%	0.05%
FTSE 100	7522.03	0.91%	5.31%	-0.19%
CAC 40	5406.1	-0.21%	11.18%	0.16%
DAX	12804.53	-0.02%	11.53%	0.16%
Swiss SMI	9127.61	0.21%	11.04%	0.02%
Nikkei 225	19798.71	-0.61%	3.58%	-0.54%
CSI 300	3417.94	-0.31%	3.26%	1.08%

DEVELOPED VS EMERGING - 30 DAYS CHART

INTERNATIONAL EQUITY - 30 DAYS CHART


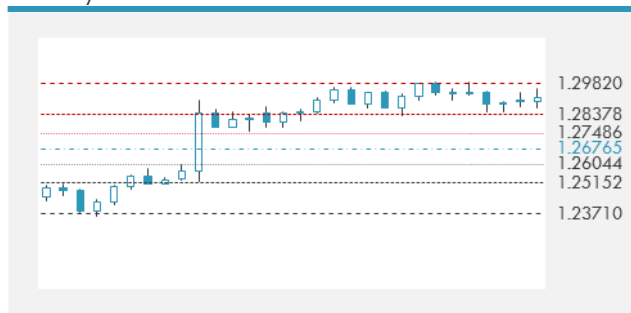
FOREIGN EXCHANGE MARKET

	Last Price	Daily %	Δ10D	Vol 25	ΔRR
Major Indices					
USD Index	1208.12	-0.16%	-0.03%	-	
EUR/USD	1.1108	0.23%	-1.01%	0.368	
USD/JPY	112.44	-0.60%	0.67%	-0.618	
GBP/USD	1.2936	0.15%	-0.56%	-0.053	
USD/CAD	1.3594	-0.09%	-0.16%	-0.020	
AUD/USD	0.7429	0.04%	-0.13%	-0.418	
NZD/USD	0.6918	0.51%	0.31%	-0.333	
USD/CHF	0.9832	-0.27%	-0.79%	-0.363	
USD/NOK	8.4585	-0.02%	-0.38%	-0.085	
USD/SEK	8.7687	-0.28%	0.05%	0.280	
USD/CNY	6.8872	0.01%	0.00%	0.243	
Major EUR Cross Rate					
EUR/GBP	0.85873	0.10%	-0.25%	0.223	
EUR/CHF	1.09217	-0.05%	0.08%	-0.060	
EUR/JPY	124.9	-0.37%	0.26%	-0.400	

DISTANCE FROM 52 WEEKS LOW/HIGH


- The dollar fell toward the lowest level since the U.S. election in November as political turmoil surrounding President Donald Trump sapped demand for the greenback.
- President Recep Tayyip Erdogan returns to Turkey after meeting U.S. President Donald Trump at the White House. Speaking after the meeting, Erdogan said it would be inappropriate for any country to take Syrian Kurdish “YPG/PYD terrorist organization as a counterpart.” The Turkish Lira weakened.

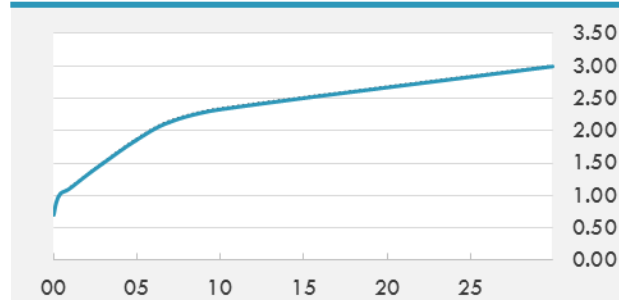
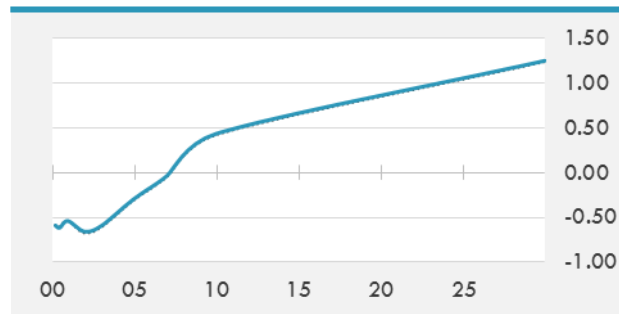
EUR/USD 30 DAYS SUPPORT & RESISTANCE

GBP/USD 30 DAYS SUPPORT & RESISTANCE

USD/JPY 30 DAYS SUPPORT & RESISTANCE

USD/CAD 30 DAYS SUPPORT & RESISTANCE


GLOBAL BOND INDICES

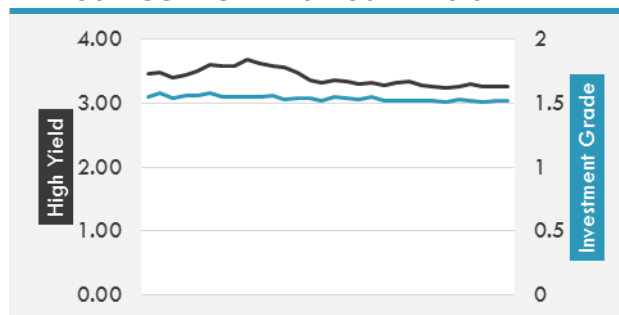
	Yield	ΔYield (in Bps)
Benchmark Indices		
US 10 Years Benchmark	2.3257	-0.018
EU 10 Years Benchmark	0.435	0.015
UK 10 Years Benchmark	1.131	-0.007
Sovereign Bonds		
US Treasury Bond	1.867	-0.006
Eurozone Sovereign Bond	0.688	-0.005
U.K. Sovereign Bond	1.087	-0.01
Japan Sovereign Bond	0.111	0.008
USD Emerging Sovereign Bond	4.523	-0.009
Corporate Bonds		
US Investment Grade Bond	3.238	-0.008
US High Yield Bond	5.634	-0.02
EUR Investment Grade Bond	0.72	0.015
EUR High Yield Bond	2.508	-0.07
USD Emerging Market IG & HY	4.666	-0.008

US TREASURIES YIELD CURVE

EUR GENERIC YIELD CURVE


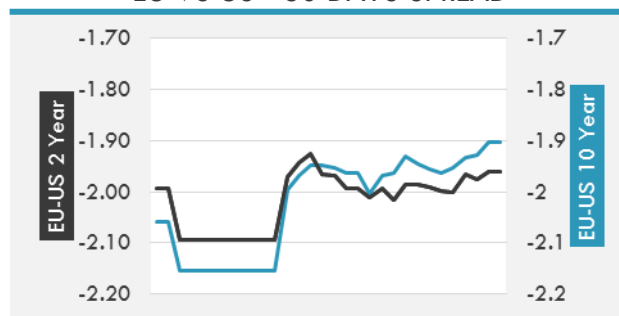
- Treasuries rose for a second day as U.S. political turmoil sapped investor confidence in the Trump administration amid signs the world's biggest economy is losing momentum.
- Core bonds rally as risk-off tears through markets in Asian hours, lifting Treasuries. Duration supply onslaught continues, with German 30y auction and EFSF 16y syndicated issue in benchmark size expected. Large pent-up demand for duration was evident in huge book sizes for yesterday's 40y gilt, 30y OAT.

OVERNIGHT RATES - SWAPS

	Yield	ΔYield (in Bps)
3M USD LIBOR	1.17944	0.0000
3M EUR EURIBOR	-0.33	0.0000
3M GBP LIBOR	0.31525	0.0000
3Y USD SWAP	1.6813	-0.0036
5Y USD SWAP	1.9083	-0.0046
10Y USD SWAP	2.2467	-0.0086
30Y USD SWAP	2.5253	-0.0042

USD CORPORATES - 30 DAYS SPREAD

FIXED INCOME SPREADS

	Spread	ΔSpread (in Bps)
USD 3M vs 10Y Spread	1.41617	(0.0483)
USD 2Y vs 10Y Spread	1.02295	(0.0177)
USD IG Spread	1.52	0.0100
USD HY Spread	3.27	0.0100
EU vs US 10Y Spread	-1.9039	0.0253
EU vs US 2Y Spread	-1.9605	0.0150
EM vs Benchmark Spread	241	0.300

EU VS US - 30 DAYS SPREAD


GLOBAL COMMODITIES MARKET

	Last Price	Daily %
Commodity Index	83.50	-0.10%

Energy

WTI Crude Future	48.66	-0.39%
Brent Crude Future	51.65	-0.33%
NYMEX Gasoline	160.43	0.56%
NYMEX Heat Oil	151.64	0.45%
ICE Gasoil	458	-0.22%
NYMEX Natural Gas	3.23	-3.55%

Precious Metals

Gold Spot \$/Oz	1237.24	0.52%
Silver Spot \$/Oz	16.856	1.34%
Platinum Spot \$/Oz	941.36	1.29%
Palladium Spot \$/Oz	796.47	-0.04%
Gold Future	1236.4	0.52%
Silver Future	16.747	0.87%
Platinum Future	937	0.89%
Palladium Future	792	-0.63%

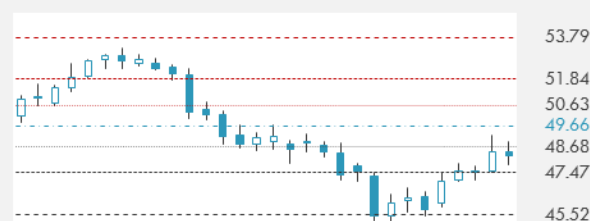
Base Metals

LME Aluminum	1923	0.92%
LME Copper	5611	-0.04%
LME Zinc	2546	-0.97%
LME Nickel	9120	-1.25%
LME Lead	2084	-2.39%
LME Tin	19925	0.25%

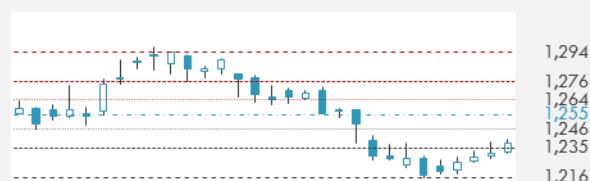
Agricultural

Corn CBT	367.75	0.00%
Wheat CBT	424.25	0.24%
Soybeans CBT	976.25	1.14%
Bean Meal CBT	317	1.44%
Rough Rice CBT	10.625	-0.05%
MDE Palm Oil	2610	0.04%
Soybean CBT	33.01	-0.03%
Coffee ICE	131.45	-1.50%
Sugar #11 ICE	15.88	1.73%
Cotton #2 ICE	81.32	-4.69%
Cocoa ICE	2034	-0.34%
Ethanol CME	1.482	-1.66%
Lumber CME	371.7	-0.46%
Orange Juice ICE	143.35	-0.62%
Live Cattle CME	118.25	-0.46%
Feeder Cattle CME	147.7	-1.06%
Lean Hogs CME	79.475	1.44%

COMMODITY INDEX SUPPORT & RESISTANCE

WTI OIL 30 DAYS SUPPORT & RESISTANCE


- Oil fell for a second day after industry data showed an increase in U.S. crude stockpiles, stalling a rally driven by Saudi Arabian and Russian pledges to extend supply cuts.
- Gold's getting a lift from the turmoil in the White House's West Wing.

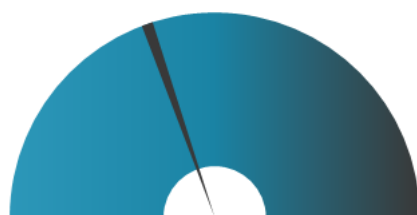
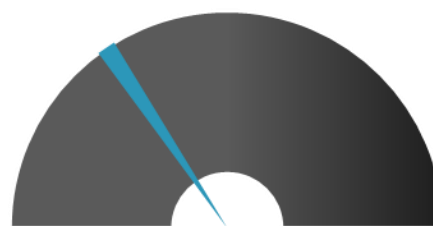
GOLD 30 DAYS SUPPORT & RESISTANCE

SILVER 30 DAYS SUPPORT & RESISTANCE


TOP 10 WINNERS

	Ticker	Last Price	Daily %
S&P 500 Stocks			
FRONTIER COMMUNI	FTR	1.35	4.65
QORVO INC	QRVO	74.84	4.61
YAHOO! INC	YHOO	50.96	2.21
MICROSOFT CORP	MSFT	69.41	2.01
BROWN-FORMAN -B	BF/B	50.46	2.00
MICROCHIP TECH	MCHP	81.63	1.87
NVIDIA CORP	NVDA	136.81	1.86
EBAY INC	EBAY	34.81	1.84
WYNN RESORTS LTD	WYNN	127.91	1.77
CITIGROUP INC	C	62.49	1.74

TOP 10 LOSERS

	Ticker	Last Price	Daily %
S&P 500 Stocks			
RALPH LAUREN COR	RL	73.94	-3.41
STAPLES INC	SPLS	8.99	-3.54
UNDER ARMO-C	UAA	17.97	-3.65
UNDER ARMOUR-A	UAA	19.48	-3.99
TJX COS INC	TJX	73.76	-4.08
MALLINCKRODT	MNK	44.83	-4.17
KIMCO REALTY	KIM	18.15	-4.17
DAVITA INC	DVA	62.09	-5.97
H&R BLOCK INC	HRB	25.18	-6.01
TEGNA INC	TGNA	22.01	-6.42

S&P 500 DISTRIBUTION

WINNERS
LOSERS
S&P VOLATILITY INDEX

LOW VOLATILITY
HIGH VOLATILITY

- Facebook is still accessible in Thailand - one of the most Facebook-active countries in Asia - despite concerns that authorities would shut down the social network.
- The EU's need for deep reforms is so dire that even the idea of changing the EU treaty is "not taboo," French President Emmanuel Macron said during his first joint news conference with Angela Merkel
- It's now been twenty years since Amazon made it's public debut on the Nasdaq and in that time shares have gone from \$1.50 on a split-adjusted basis to \$960.
- Yahoo has announced plans to buy back \$3B of its common stock - a proposal that will expire on June 13.
- Wal-Mart launched its Sam's Club global flagship store on JD.com today. The initiative marks the first time that Sam's products from U.S. stores are available in China.
- Facebook calls it a minor discrepancy, but says it's issuing refunds to some advertisers after discovering a bug leading it to overstate clicks on the advertisers' websites.
- Boeing delivers the first 737 Max jetliner to Malaysia's Lion Air, just one day later than first scheduled after quickly recovering from a possible engine manufacturing defect which had grounded the Max fleet last week.
- SunEdison reaches a series of settlements at a court hearing that bring its unsecured creditors on board with its bankruptcy exit plan.
- At this week's I/O developer conference, Google will preview its next-gen virtual reality headset, Variety reports.

KEY ECONOMIC INDICATORS

Country	Event	Surv(M)	Actual	Prior	Time
Bahrain	M1 Money Supply YoY	--	--	-0.62%	
Bahrain	M2 Money Supply YoY	--	--	1.62%	
Bahrain	M3 Money Supply YoY	--	--	1.11%	
Canada	Manufacturing Sales MoM	1.30%	--	-0.20%	15:30
Eurozone	CPI YoY	1.90%	--	1.50%	12:00
Eurozone	CPI MoM	0.40%	--	0.80%	12:00
Eurozone	CPI Core YoY	1.20%	--	1.20%	12:00
Germany	Merkel Speaks				16:00
Italy	Trade Balance Total	--	--	1884m	11:00
Japan	Industrial Production MoM	--	-1.90%	-2.10%	7:30
Japan	Machine Orders MoM	2.50%	1.40%	1.50%	2:50
Japan	Industrial Production YoY	--	3.50%	3.30%	7:30
Japan	Machine Orders YoY	1.20%	-0.70%	5.60%	2:50
Japan	Capacity Utilization MoM	--	-1.60%	3.20%	7:30
Russia	GDP YoY	0.40%	--	0.30%	16:00
United Kingdom	Jobless Claims Change	--	--	25.5k	11:30
United Kingdom	Claimant Count Rate	--	--	2.20%	11:30
United Kingdom	Average Weekly Earnings 3M/YoY	2.40%	--	2.30%	11:30
United States	DOE U.S. Crude Oil Inventories	-2673k	--	-5247k	17:30
United States	MBA Mortgage Applications	--	--	2.40%	14:00

Banque BEMO sal

Head Office - Private and Corporate Banking

96 Pasteur Building, Pasteur Street, Medawar Area, P.O. Box: 16-6353, Beirut - Lebanon
Tel: + 961 1 568 250 Fax: + 961 1 568 266

Investment & Research research@bemobank.com

Beirut Central District Riad El Solh Square, Esseily Building Bloc A, 7th Floor Beirut - Lebanon
Tel: + 961 1 992 600 Fax: + 961 1 983 368
www.bemobank.com

Disclaimer:

This report is published for information purposes only. The information herein has been compiled from, or based upon sources considered to be reliable (Bloomberg, SeekingAlpha, DailyStar...), but we do not guarantee or assume responsibility for its completeness and accuracy. This document should not be construed as a solicitation to take part in any investment, or as constituting any representation or warranty on our part. This report is not to be relied upon in substitution for the exercise of specialists.

We may not have taken any steps to ensure that the securities referred to in this report are suitable for any particular investor. The investments and services contained or referred to herein are not purported to be exhaustive, any person considering an investment should seek specialist advice on the suitability of an investment.

Nothing in this report constitutes investment, legal, accounting or tax advice, or a representation that any investment or strategy is suitable or appropriate to your individual circumstances, or otherwise constitutes a personal recommendation. Clients understand that it is their responsibility to seek legal and/or tax advice regarding the legal and tax consequences of their investment transactions. The consequences of any action taken on the basis of information contained herein are solely the responsibility of the recipient.

Investment instruments are subject to risk, including possible loss of principal amount invested. Past performance should not be taken as an indication or guarantee of future performance, and no representation or warranty, express or implied, is made regarding future performance. The value of securities and financial instruments is subject to exchange rate fluctuation that may have a positive or adverse effect on the price or income of such securities or financial instruments. Some investments mentioned in this report may have a high level of volatility. High volatility investments may experience sudden and large falls in their value causing losses when that investment is realized. Some investments may not be readily realizable and it may be difficult to sell or realize those investments, similarly it may prove difficult to obtain reliable information about the value, or risks, to which such an investment is exposed.

This report may provide the addresses of websites or references. We have not reviewed any such site and takes no responsibility for the content contained therein. Such address or reference is provided solely for convenience and information. Accessing such website through this report shall be at the recipients own risk.