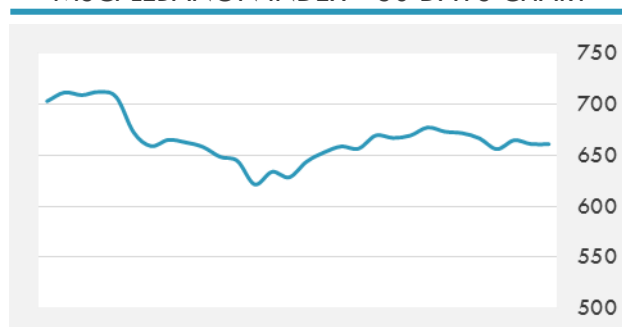
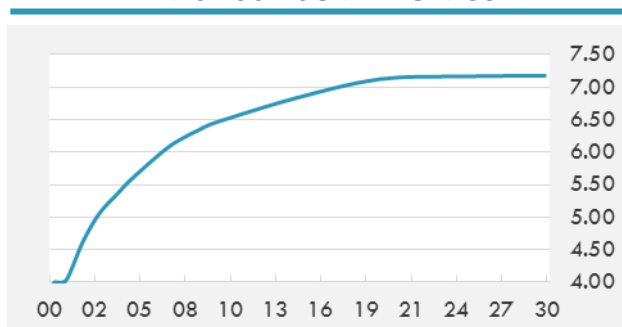


BEIRUT STOCK EXCHANGE

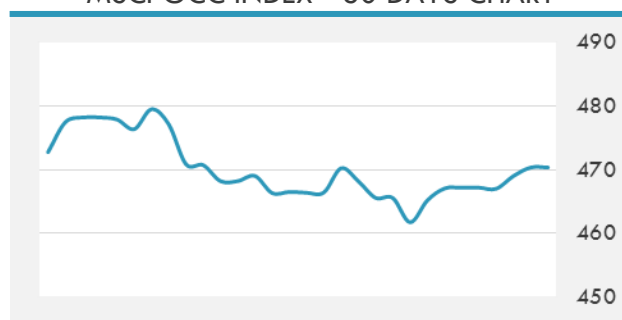
	Last	Daily %	YTD %	Dividend %
Development and Reconstruction				
Solidere A	8.89	-0.45%	-14.35%	1.11%
Solidere B	8.8	-1.12%	-16.19%	1.12%
Solidere GDR	9	2.04%	-10.00%	1.10%
Banking				
Audi Listed	6.21	-1.43%	-8.68%	8.02%
BLC Listed	0.99	0.00%	0.00%	0.00%
BOB Listed	18.8	0.00%	0.00%	3.52%
Byblos Listed	1.65	2.48%	-2.94%	8.02%
BEMO Listed	1.7	0.00%	0.00%	2.33%
BLOM Listed	10.7	-0.19%	0.94%	9.25%
Trading				
RYMCO	3.25	0.00%	0.00%	3.69%
Industrial				
Holcim	11.64	3.47%	-0.94%	7.18%
Ciments Blancs	1.57	0.00%	0.00%	0.00%

MSCI LEBANON INDEX - 30 DAYS CHART

LEBANESE USD SOVEREIGN CURVE


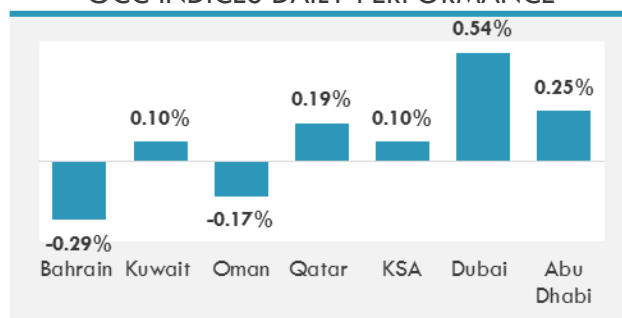
- The election of a president and formation of a Cabinet have failed to positively impact the retail market in Lebanon as sales in general continued to fall in the first quarter of 2017, according to the BTA-Fransabank Retail Index.
- Industry Minister Hussein Hajj Hasan called Wednesday for the adoption of a clear economic policy to help overcome existing difficulties in the country.
- The finance and budget committee Wednesday urged Finance Minister Ali Hassan Khalil to reconsider some of the proposed taxes in the 2017 draft budget.

GCC EQUITY INDICES

	Last Price	Daily %	YTD %
Bahrain	1309.76	-0.29%	7.32%
Kuwait	6732.07	0.10%	17.12%
Oman	5423.17	-0.17%	-6.22%
Qatar	10144.89	0.19%	-2.80%
KSA	6947.36	0.10%	-3.65%
Dubai	3395.06	0.54%	-3.85%
Abu Dhabi	4593.72	0.25%	1.04%

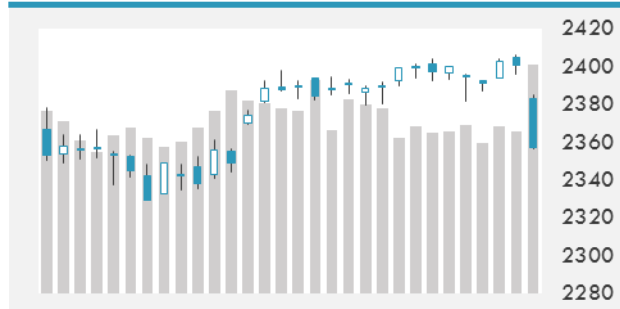
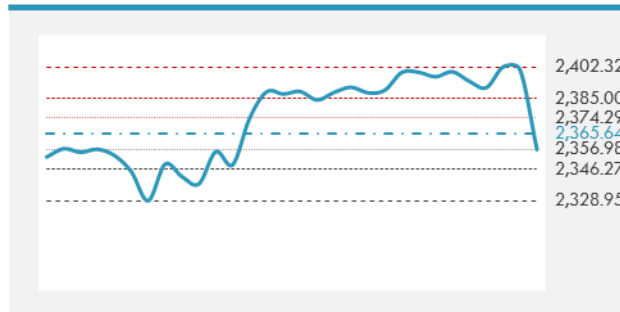
MSCI GCC INDEX - 30 DAYS CHART

LOCAL/GCC FOREIGN EXCHANGE

	Cross	Last Price
Lebanese Pound Spot	USD/LBP	1511.5
Bahraini Dinar Spot	USD/BHD	0.37702
Kuwaiti Dinar Spot	USD/KWD	0.30366
Omani Rial Spot	USD/OMR	0.38502
Qatari Riyal Spot	USD/QAR	3.6414
Saudi Riyal Spot	USD/SAR	3.7502
UAE Dirham Spot	USD/AED	3.6729

GCC INDICES DAILY PERFORMANCE


UNITED STATES EQUITY MARKET INDICES

	Last Price	Daily %	YTD %	Δ10D Vol
Major Indices				
DowJones	20606.93	-1.78%	4.27%	7.04%
S&P 500	2357.03	-1.82%	5.28%	7.01%
Nasdaq	6011.236	-2.57%	11.67%	11.91%
Sectors Indices				
Discretionary	701.27	-1.61%	8.25%	4.41%
Staples	564.25	-0.17%	6.10%	-1.74%
Energy	492.61	-1.13%	-11.16%	-2.52%
Financials	382.14	-3.04%	-1.14%	10.77%
Healthcare	859.85	-1.27%	7.90%	1.74%
Industrials	557.71	-2.06%	3.65%	6.32%
IT	934.74	-2.80%	15.69%	13.54%
Materials	325.5	-2.13%	4.27%	5.03%
Telecom	153.3	-1.80%	-13.20%	2.19%
Utilities	261.17	0.25%	5.81%	-0.20%
Real Estate	194.24	0.61%	2.11%	0.77%

S&P 500 INDEX - 30 DAYS CHART

S&P 500 SUPPORT & RESISTANCE


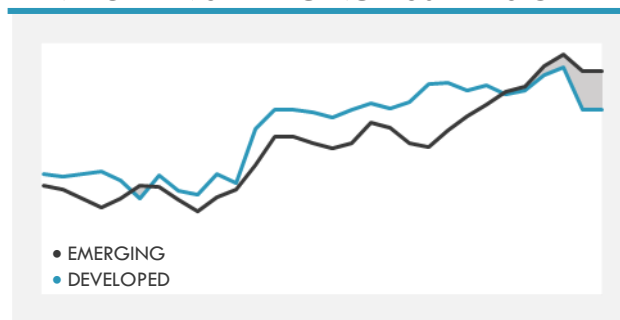
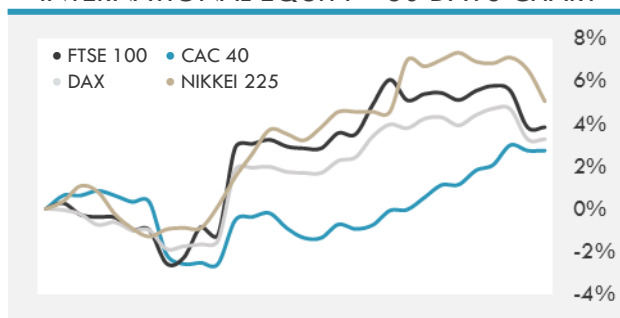
- Asian shares fell the most in six weeks, extending a global rout and sparking a return to volatility for regional markets, as concerns over U.S. President Donald Trump's administration weighed on investors.
- A selloff in the U.S. equity market accelerated up to the close as investors assessed the fallout from a report that President Trump asked then-FBI Director James Comey to drop an investigation into former National Security Adviser Michael Flynn, and considered the outlook for a Federal Reserve rate increase in June.

INTERNATIONAL MARKETS INDICES

	Last Price	Daily %	YTD %	Δ10D Vol
World	1118.73	-1.17%	8.50%	4.42%
Developed	1882.62	-1.24%	7.50%	4.28%
Emerging	1008.63	-0.63%	16.97%	0.24%
Frontier	2693.67	0.09%	11.39%	0.03%
Europe	132.16	-1.16%	7.89%	2.70%
Latin America	2714.34	-1.71%	15.97%	-0.80%
Asia Pacific	151.97	0.05%	12.53%	-0.48%

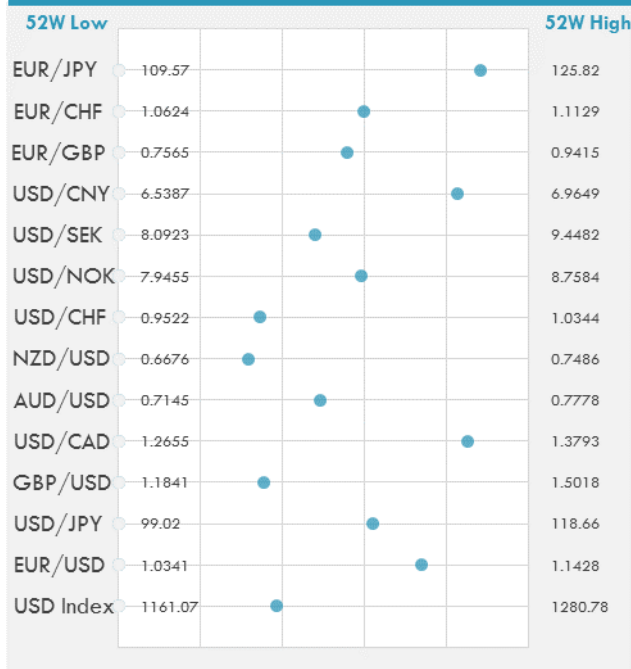
INTERNATIONAL EQUITY INDICES

	Last Price	Daily %	YTD %	Δ10D Vol
EuroStoxx 50	3584.83	-1.57%	8.94%	2.03%
FTSE 100	7503.47	-0.25%	5.05%	1.11%
CAC 40	5317.89	-1.63%	9.37%	1.65%
DAX	12631.61	-1.35%	10.02%	2.97%
Swiss SMI	9001.6	-1.38%	9.51%	3.07%
Nikkei 225	19538.1	-1.40%	2.22%	0.88%
CSI 300	3398.84	-0.33%	2.68%	0.40%

DEVELOPED VS EMERGING - 30 DAYS CHART

INTERNATIONAL EQUITY - 30 DAYS CHART


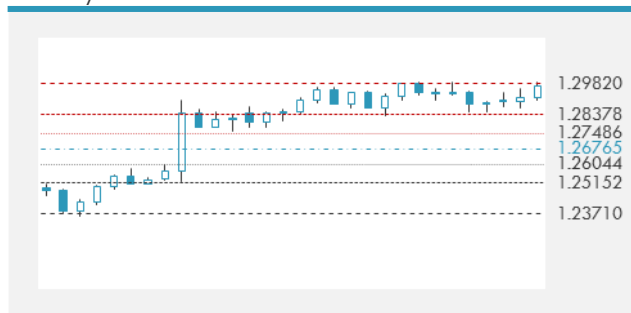
FOREIGN EXCHANGE MARKET

	Last Price	Daily %	Δ10D	Vol 25	ΔRR
Major Indices					
USD Index	1206.96	0.25%	0.30%	-	
EUR/USD	1.1143	-0.14%	0.16%	0.533	
USD/JPY	111.19	0.32%	0.11%	-1.188	
GBP/USD	1.2963	-0.05%	-0.73%	-0.013	
USD/CAD	1.3623	0.15%	-1.02%	-0.005	
AUD/USD	0.7456	0.32%	0.16%	-0.390	
NZD/USD	0.6933	-0.13%	-0.59%	-0.290	
USD/CHF	0.9804	0.15%	0.02%	-0.453	
USD/NOK	8.4249	0.24%	-0.34%	-0.090	
USD/SEK	8.7420	0.08%	-0.12%	0.288	
USD/CNY	6.8899	0.17%	0.25%	0.363	
Major EUR Cross Rate					
EUR/GBP	0.85961	-0.09%	-0.37%	0.278	
EUR/CHF	1.09249	0.02%	-0.08%	-0.090	
EUR/JPY	123.9	0.18%	-0.10%	-0.565	

DISTANCE FROM 52 WEEKS LOW/HIGH


- The dollar gave up all its gains since the election of President Trump, undermined by uncertainty surrounding the legislative agenda amid political turmoil that also prompted a steep fall in U.S. stocks and United States Treasury yields.
- AUD/USD rebounded from earlier losses after April jobs data beats estimates.
- Turkey's lira fell against the dollar while five- and 10-year local currency bonds traded lower as growing concerns over the turmoil surrounding the U.S. administration weighed on risk appetite.

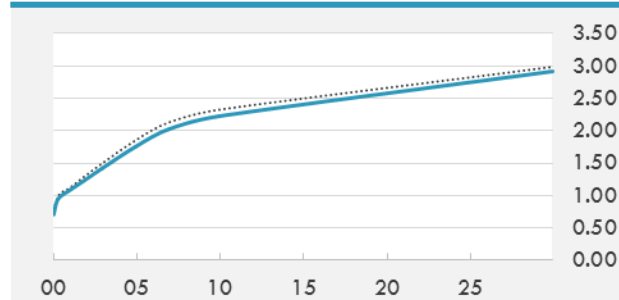
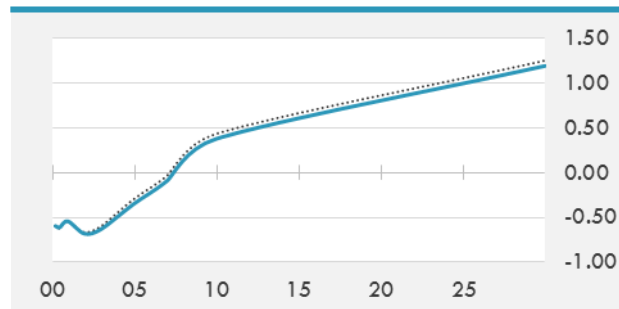
EUR/USD 30 DAYS SUPPORT & RESISTANCE

GBP/USD 30 DAYS SUPPORT & RESISTANCE

USD/JPY 30 DAYS SUPPORT & RESISTANCE

USD/CAD 30 DAYS SUPPORT & RESISTANCE


GLOBAL BOND INDICES

	Yield	ΔYield (in Bps)
Benchmark Indices		
US 10 Years Benchmark	2.2243	-0.101
EU 10 Years Benchmark	0.378	-0.057
UK 10 Years Benchmark	1.068	-0.063
Sovereign Bonds		
US Treasury Bond	1.785	-0.082
Eurozone Sovereign Bond	0.641	-0.047
U.K. Sovereign Bond	1.034	-0.053
Japan Sovereign Bond	0.112	0.001
USD Emerging Sovereign Bond	4.52	-0.003
Corporate Bonds		
US Investment Grade Bond	3.157	-0.081
US High Yield Bond	5.682	0.048
EUR Investment Grade Bond	0.689	-0.031
EUR High Yield Bond	2.579	0.071
USD Emerging Market IG & HY	4.638	-0.028

US TREASURIES YIELD CURVE

EUR GENERIC YIELD CURVE


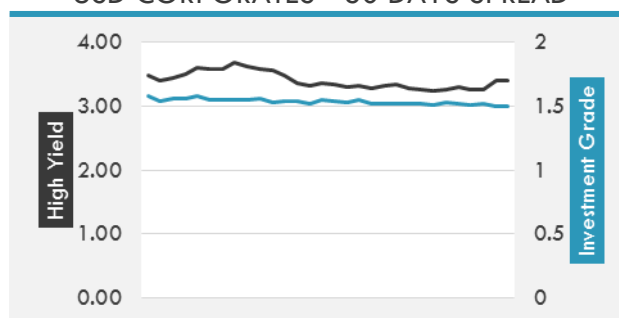
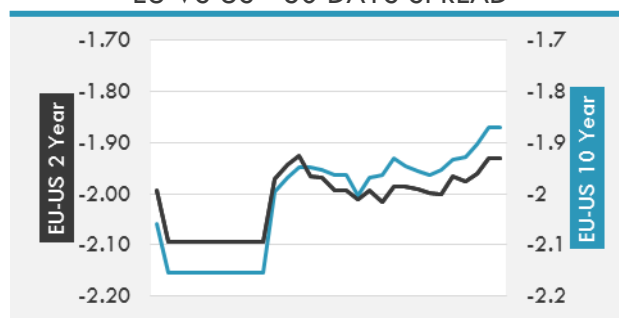
- Gilts held on to most of the day's gains after U.K. labor data underscored a worsening real-income squeeze, tempering the prospects of a tighter monetary policy.
- Treasuries traded near session highs around the 3pm ET close, with 10Y futures contract holding its biggest advance since mid-March and benchmark yields lower by 6bp-11bp, following reports Trump pressured former FBI head Comey to end an investigation before firing him last week.

OVERNIGHT RATES - SWAPS

	Yield	ΔYield (in Bps)
3M USD LIBOR	1.18117	0.0000
3M EUR EURIBOR	-0.331	0.0000
3M GBP LIBOR	0.31244	0.0000
3Y USD SWAP	1.6025	-0.0788
5Y USD SWAP	1.8111	-0.0972
10Y USD SWAP	2.147	-0.0997
30Y USD SWAP	2.4458	-0.0795

FIXED INCOME SPREADS

	Spread	ΔSpread (in Bps)
USD 3M vs 10Y Spread	1.33005	(0.0861)
USD 2Y vs 10Y Spread	0.97435	(0.0486)
USD IG Spread	1.5	(0.0200)
USD HY Spread	3.41	0.1400
EU vs US 10Y Spread	-1.8689	0.0350
EU vs US 2Y Spread	-1.931	0.0295
EM vs Benchmark Spread	246	5.000

USD CORPORATES - 30 DAYS SPREAD

EU VS US - 30 DAYS SPREAD


GLOBAL COMMODITIES MARKET

	Last Price	Daily %
Commodity Index	83.98	0.57%

Energy

WTI Crude Future	49.07	0.84%
Brent Crude Future	52.21	1.08%
NYMEX Gasoline	160.27	-0.10%
NYMEX Heat Oil	153.35	1.13%
ICE Gasoil	463.5	1.20%
NYMEX Natural Gas	3.192	-1.18%

Precious Metals

Gold Spot \$/Oz	1261.36	1.95%
Silver Spot \$/Oz	16.905	0.29%
Platinum Spot \$/Oz	946.4	0.54%
Palladium Spot \$/Oz	784.63	-1.49%
Gold Future	1258.7	1.80%
Silver Future	16.906	0.95%
Platinum Future	946.1	0.97%
Palladium Future	777	-1.89%

Base Metals

LME Aluminum	1925	0.08%
LME Copper	5610	-0.02%
LME Zinc	2561	0.59%
LME Nickel	9215	1.04%
LME Lead	2109	1.20%
LME Tin	20380	2.28%

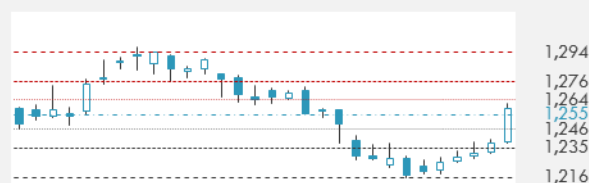
Agricultural

Corn CBT	371.5	1.02%
Wheat CBT	427	0.65%
Soybeans CBT	975.75	-0.05%
Bean Meal CBT	315.3	-0.54%
Rough Rice CBT	10.91	2.68%
MDE Palm Oil	2643	1.26%
Soybean CBT	33.15	0.42%
Coffee ICE	134.4	2.24%
Sugar #11 ICE	16.3	2.64%
Cotton #2 ICE	80.17	-1.41%
Cocoa ICE	2054	0.98%
Ethanol CME	1.456	-1.75%
Lumber CME	373.7	0.54%
Orange Juice ICE	141.9	-1.01%
Live Cattle CME	118.825	0.49%
Feeder Cattle CME	147.725	0.02%
Lean Hogs CME	79	-0.60%

COMMODITY INDEX SUPPORT & RESISTANCE

WTI OIL 30 DAYS SUPPORT & RESISTANCE


- Venezuela, the oil-rich Latin American nation that signed up to OPEC's supply cuts, has reduced production more than any other member in the past year. And it's not even trying.
- Gold held the biggest gain in almost a year

GOLD 30 DAYS SUPPORT & RESISTANCE

SILVER 30 DAYS SUPPORT & RESISTANCE

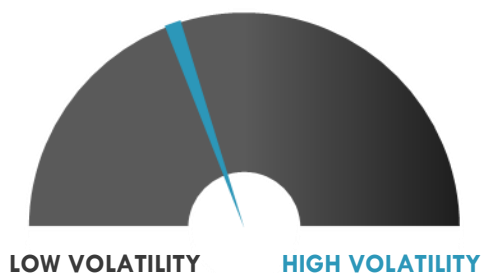

TOP 10 WINNERS

	Ticker	Last Price	Daily %
S&P 500 Stocks			
COLGATE-PALMOLIV	CL	75.69	5.74
EXTRA SPACE STOR	EXR	75.27	4.85
BROWN-FORMAN -B	BF/B	52.28	3.61
DAVITA INC	DVA	63.95	3.00
PROGRESSIVE CORP	PGR	41.16	2.59
PUBLIC STORAGE	PSA	212.95	2.31
CROWN CASTLE INT	CCI	98.12	2.28
VENTAS INC	VTR	66.32	2.00
AMERICAN TOWER C	AMT	130.74	1.85
NEWMONT MINING	NEM	34.26	1.51

TOP 10 LOSERS

	Ticker	Last Price	Daily %
S&P 500 Stocks			
COMERICA INC	CMA	67.27	-5.63
HUNTINGTON BANC	HIBAN	12.29	-5.75
ELECTRONIC ARTS	EA	105.24	-5.83
BANK OF AMERICA	BAC	22.57	-5.92
UNITED RENTALS	URI	105.1	-5.93
SUNTRUST BANKS	STI	53.59	-6.05
SCHWAB (CHARLES)	SCHW	38.12	-6.27
NVIDIA CORP	NVDA	127.72	-6.64
CITIZENS FINANCI	CFG	34.57	-6.77
MICRON TECH	MU	27	-6.96

S&P 500 DISTRIBUTION

S&P VOLATILITY INDEX


- UBER CEO Travis Kalanick rang up Tesla's Elon Musk last summer to propose a partnership on self-driving cars, according to Wild Ride, a book by Fortune magazine's Adam Lashinsky scheduled for release next week.
- Amazon is hiring a business lead to figure out how the company can break into the multibillion-dollar pharmacy market, CNBC reports.
- Diving into auto security after losing its smartphone dominance, BlackBerry is working with car-makers to remotely scan vehicles for computer viruses and tell drivers to pull over if they were in critical danger.
- President Tayyip Erdogan touted "outstanding" American relations on Tuesday, but emphasized Turkey will not accept Syrian Kurdish fighters in the region, while stopping short of directly criticizing a U.S. decision to arm them.
- Apple will unveil new laptops during its annual developer conference, known as WWDC, next month, according to Bloomberg.
- Inflation in the Eurozone rebounded to 1.9% in April, in line with the ECB's target of close to, but below, 2% inflation.
- The contract for Audi CEO Rupert Stadler is set to be extended for another five years, sources tip Reuters. Stadler's current contract runs to the end of the year.
- Bombardier has awarded IBM a \$700M contract to find cost savings and improve IT operations in its rail and aerospace businesses.
- Exxon Mobil unveils plans to invest \$300M over 10 years as it enters Mexico's retail fuel market

KEY ECONOMIC INDICATORS

Country	Event	Surv(M)	Actual	Prior	Time
Bahrain	M1 Money Supply YoY	--	--	-0.62%	
Bahrain	M2 Money Supply YoY	--	--	1.62%	
Canada	Int'l Securities Transactions	--	--	38.84b	15:30
Eurozone	ECB's Draghi Speaks				20:00
Japan	GDP SA QoQ	0.50%	0.50%	0.30%	2:50
Japan	GDP Annualized SA QoQ	1.70%	2.20%	1.20%	2:50
Japan	GDP Deflator YoY	-0.70%	-0.80%	-0.10%	2:50
Japan	GDP Nominal SA QoQ	0.10%	0.00%	0.40%	2:50
Russia	Industrial Production YoY	0.60%	--	0.80%	
United Arab Emirates	M1 Money Supply MoM	--	--	3.20%	
United Arab Emirates	M3 Money Supply MoM	--	--	1.60%	
United Arab Emirates	M2 Money Supply MoM	--	--	2.30%	
United Kingdom	Retail Sales Ex Auto Fuel MoM	1.00%	--	-1.50%	11:30
United Kingdom	Retail Sales Inc Auto Fuel MoM	1.10%	--	-1.80%	11:30
United Kingdom	Retail Sales Inc Auto Fuel YoY	2.10%	--	1.70%	11:30
United Kingdom	Retail Sales Ex Auto Fuel YoY	2.60%	--	2.60%	11:30
United States	Initial Jobless Claims	240k	--	236k	15:30
United States	Leading Index	0.40%	--	0.40%	17:00
United States	Philadelphia Fed Business Outlook	18.5	--	22	15:30
United States	Continuing Claims	1950k	--	1918k	15:30

Banque BEMO sal

Head Office - Private and Corporate Banking

96 Pasteur Building, Pasteur Street, Medawar Area, P.O. Box: 16-6353, Beirut - Lebanon
Tel: + 961 1 568 250 Fax: + 961 1 568 266

Investment & Research research@bemobank.com

Beirut Central District Riad El Solh Square, Esseily Building Bloc A, 7th Floor Beirut - Lebanon
Tel: + 961 1 992 600 Fax: + 961 1 983 368
www.bemobank.com

Disclaimer:

This report is published for information purposes only. The information herein has been compiled from, or based upon sources considered to be reliable (Bloomberg, SeekingAlpha, DailyStar...), but we do not guarantee or assume responsibility for its completeness and accuracy. This document should not be construed as a solicitation to take part in any investment, or as constituting any representation or warranty on our part. This report is not to be relied upon in substitution for the exercise of specialists.

We may not have taken any steps to ensure that the securities referred to in this report are suitable for any particular investor. The investments and services contained or referred to herein are not purported to be exhaustive, any person considering an investment should seek specialist advice on the suitability of an investment.

Nothing in this report constitutes investment, legal, accounting or tax advice, or a representation that any investment or strategy is suitable or appropriate to your individual circumstances, or otherwise constitutes a personal recommendation. Clients understand that it is their responsibility to seek legal and/or tax advice regarding the legal and tax consequences of their investment transactions. The consequences of any action taken on the basis of information contained herein are solely the responsibility of the recipient.

Investment instruments are subject to risk, including possible loss of principal amount invested. Past performance should not be taken as an indication or guarantee of future performance, and no representation or warranty, express or implied, is made regarding future performance. The value of securities and financial instruments is subject to exchange rate fluctuation that may have a positive or adverse effect on the price or income of such securities or financial instruments. Some investments mentioned in this report may have a high level of volatility. High volatility investments may experience sudden and large falls in their value causing losses when that investment is realized. Some investments may not be readily realizable and it may be difficult to sell or realize those investments, similarly it may prove difficult to obtain reliable information about the value, or risks, to which such an investment is exposed.

This report may provide the addresses of websites or references. We have not reviewed any such site and takes no responsibility for the content contained therein. Such address or reference is provided solely for convenience and information. Accessing such website through this report shall be at the recipients own risk.