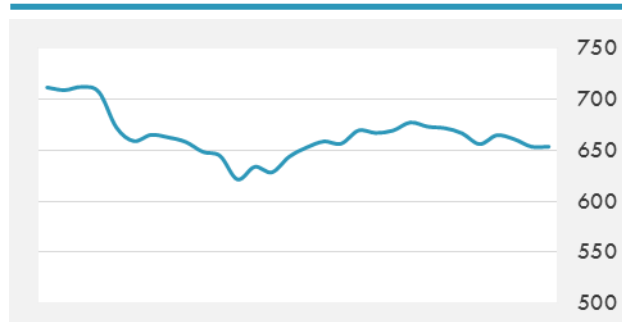
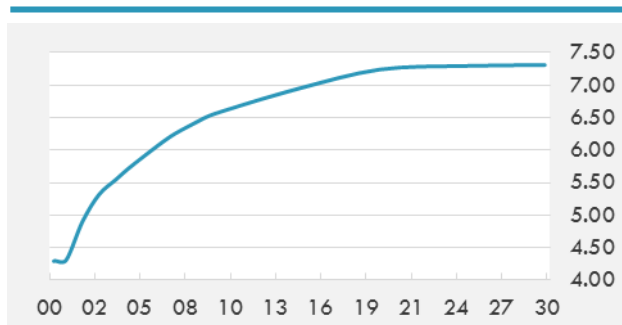


BEIRUT STOCK EXCHANGE

	Last	Daily %	YTD %	Dividend %
Development and Reconstruction				
Solidere A	8.69	-2.25%	-16.28%	1.14%
Solidere B	8.61	-2.16%	-18.00%	1.15%
Solidere GDR	9	0.00%	-10.00%	1.10%
Banking				
Audi Listed	6.1	-1.77%	-10.29%	8.17%
BLC Listed	0.99	0.00%	0.00%	0.00%
BOB Listed	18.8	0.00%	0.00%	3.52%
Byblos Listed	1.68	1.82%	-1.18%	7.87%
BEMO Listed	1.7	0.00%	0.00%	2.33%
BLOM Listed	10.71	0.09%	1.04%	9.25%
Trading				
RYMCO	3.25	0.00%	0.00%	3.69%
Industrial				
Holcim	12.36	6.19%	5.19%	6.86%
Ciments Blancs	1.57	0.00%	0.00%	0.00%

MSCI LEBANON INDEX - 30 DAYS CHART

LEBANESE USD SOVEREIGN CURVE


- Banks must strongly commit to the fight against money laundering and terrorism financing in order to maintain their place in the market, said Samir Hammoud, chairman of the Banking Control Commission of Lebanon.
- Tripoli's Special Economic Zone will witness investments creating 6,000 direct and indirect job opportunities, said former Finance Minister Raya al-Hasan, who is also head of the Tripoli Special Economic Zone Authority.

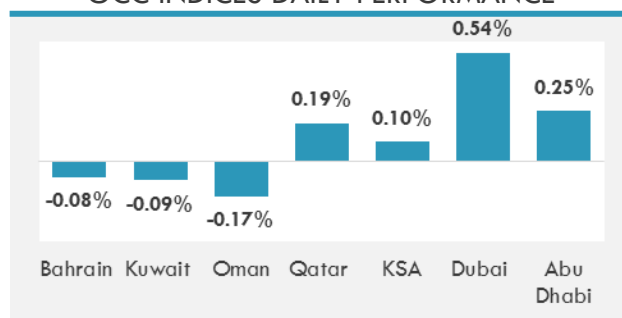
GCC EQUITY INDICES

	Last Price	Daily %	YTD %
Bahrain	1308.76	-0.08%	7.24%
Kuwait	6725.78	-0.09%	17.01%
Oman	5423.17	-0.17%	-6.36%
Qatar	10144.89	0.19%	-3.19%
KSA	6947.36	0.10%	-3.78%
Dubai	3395.06	0.54%	-4.33%
Abu Dhabi	4593.72	0.25%	0.77%

MSCI GCC INDEX - 30 DAYS CHART

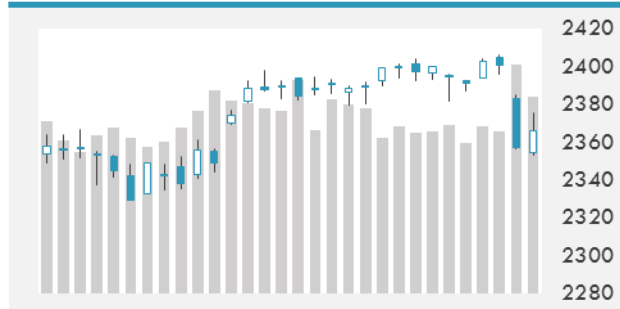
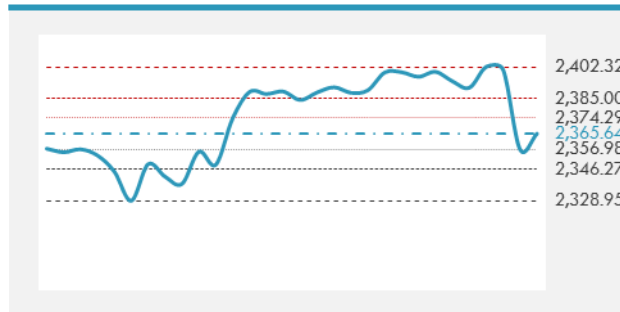
LOCAL/GCC FOREIGN EXCHANGE

	Cross	Last Price
Lebanese Pound Spot	USD/LBP	1514.25
Bahraini Dinar Spot	USD/BHD	0.37702
Kuwaiti Dinar Spot	USD/KWD	0.30359
Omani Rial Spot	USD/OMR	0.385
Qatari Riyal Spot	USD/QAR	3.6416
Saudi Riyal Spot	USD/SAR	3.7503
UAE Dirham Spot	USD/AED	3.673

GCC INDICES DAILY PERFORMANCE


UNITED STATES EQUITY MARKET INDICES

	Last Price	Daily %	YTD %	Δ10D Vol
Major Indices				
Dow Jones	20663.02	0.27%	4.56%	0.01%
S&P 500	2365.72	0.37%	5.67%	-0.07%
Nasdaq	6055.13	0.73%	12.48%	0.43%
Sectors Indices				
Discretionary	705.45	0.60%	8.90%	0.10%
Staples	564.62	0.07%	6.17%	-0.29%
Energy	492.05	-0.11%	-11.26%	-3.05%
Financials	383.33	0.31%	-0.83%	0.35%
Healthcare	863.41	0.41%	8.34%	0.68%
Industrials	558.61	0.16%	3.82%	-0.68%
IT	940.2	0.58%	16.37%	0.24%
Materials	325.48	-0.01%	4.27%	-2.92%
Telecom	155.15	1.21%	-12.15%	-0.89%
Utilities	262.18	0.39%	6.22%	-0.32%
Real Estate	194.68	0.23%	2.34%	-1.03%

S&P 500 INDEX - 30 DAYS CHART

S&P 500 SUPPORT & RESISTANCE


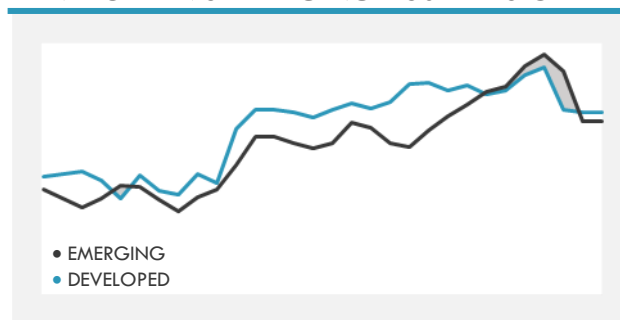
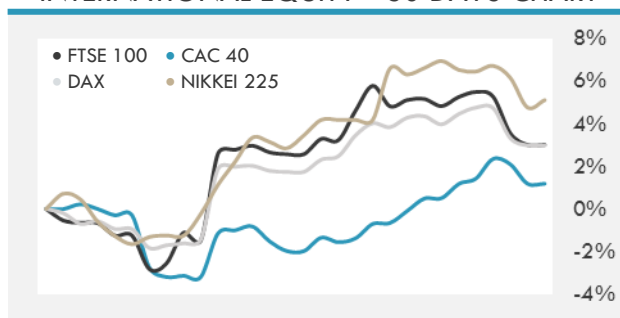
- Asian stocks headed for a weekly decline, extending a pull back from their highest level since 2015, as Japan's Nikkei 225 retreated from the 20,000 mark and Hong Kong shares held just below a two-year peak as a tumultuous week in U.S. politics outweighed positive economic data.
- U.S. stocks climbed after their worst drop since September, as worries about a political crisis surrounding U.S. President Donald Trump lingered.
- European stocks posted their biggest back-to-back drop since January as investors continued to retreat amid the turmoil surrounding U.S. President Donald Trump.

INTERNATIONAL MARKETS INDICES

	Last Price	Daily %	YTD %	Δ10D Vol
World	1115.3	-0.31%	8.17%	-0.33%
Developed	1880.96	-0.09%	7.41%	-0.72%
Emerging	988.38	-2.01%	14.63%	7.22%
Frontier	2663.68	-1.11%	10.15%	3.64%
Europe	131.42	-0.56%	7.28%	-0.63%
Latin America	2460.96	-9.33%	5.14%	40.01%
Asia Pacific	150.6	-0.90%	11.52%	1.63%

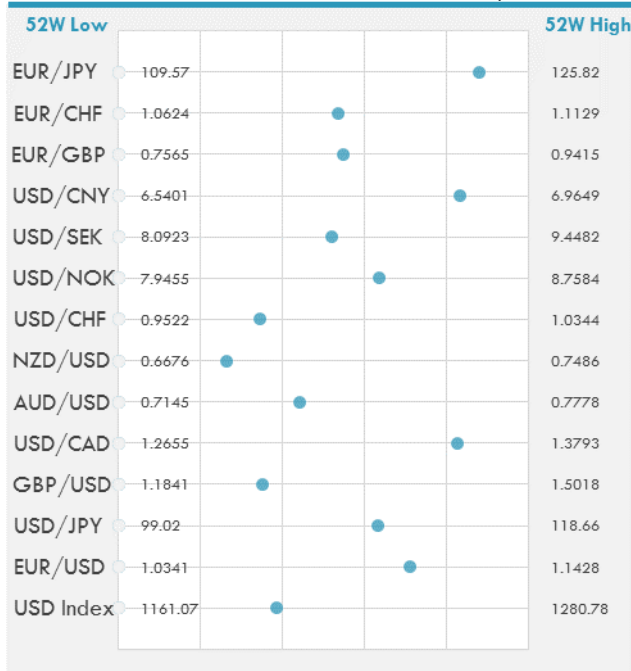
INTERNATIONAL EQUITY INDICES

	Last Price	Daily %	YTD %	Δ10D Vol
EuroStoxx 50	3562.22	-0.63%	8.26%	-1.49%
FTSE 100	7436.42	-0.89%	4.11%	2.76%
CAC 40	5289.73	-0.53%	8.79%	-2.24%
DAX	12590.06	-0.33%	9.66%	-0.52%
Swiss SMI	8938.37	-0.70%	8.74%	0.38%
Nikkei 225	19619.13	0.33%	2.64%	2.17%
CSI 300	3398.67	0.02%	2.68%	-0.49%

DEVELOPED VS EMERGING - 30 DAYS CHART

INTERNATIONAL EQUITY - 30 DAYS CHART


FOREIGN EXCHANGE MARKET

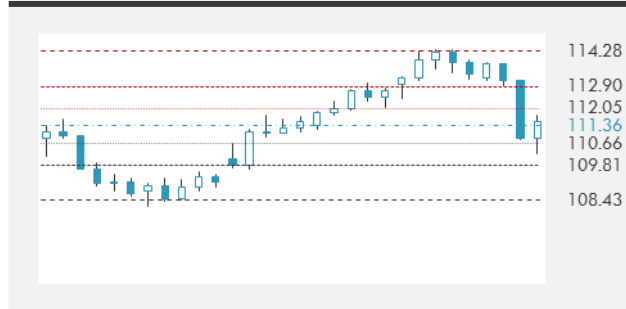
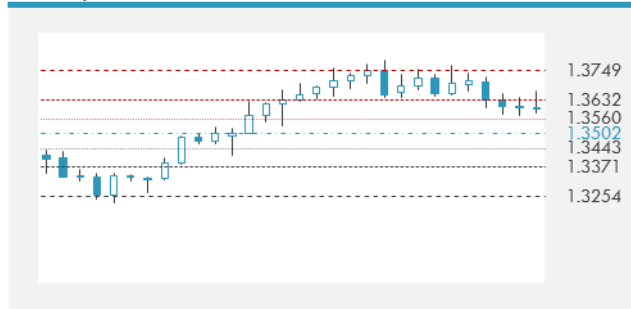
	Last Price	Daily %	Δ10D	Vol 25	ΔRR
Major Indices					
USD Index	1207.23	-0.05%	-1.09%	-	
EUR/USD	1.1112	0.08%	-1.21%	0.498	
USD/JPY	111.45	-0.04%	-0.47%	-2.550	
GBP/USD	1.2951	0.10%	-0.34%	0.053	
USD/CAD	1.3594	-0.07%	-0.40%	0.060	
AUD/USD	0.7425	0.08%	-0.90%	-0.560	
NZD/USD	0.689	-0.13%	0.00%	-0.460	
USD/CHF	0.9804	0.05%	-2.39%	-0.485	
USD/NOK	8.4621	-0.29%	-1.02%	-0.045	
USD/SEK	8.7963	-0.12%	-0.61%	0.225	
USD/CNY	6.8932	0.06%	0.06%	0.620	
Major EUR Cross Rate					
EUR/GBP	0.85795	-0.01%	-0.61%	0.265	
EUR/CHF	1.08939	0.13%	-0.82%	-0.095	
EUR/JPY	123.84	0.05%	-0.04%	-1.155	

DISTANCE FROM 52 WEEKS LOW/HIGH


- The yen strengthened as a report Chinese jets intercepted a U.S. Air Force plane added to global geopolitical tensions.
- Rupee down 0.8% for the week after plunging the most in 11 months Thursday. That's the biggest weekly decline since the period ended Nov. 18.
- The dollar rode a burst of energy in afternoon trading to fresh highs for the day as markets thinned and traders pared back short positions set earlier in the day.

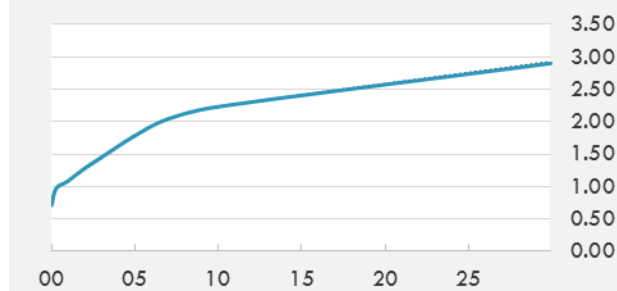
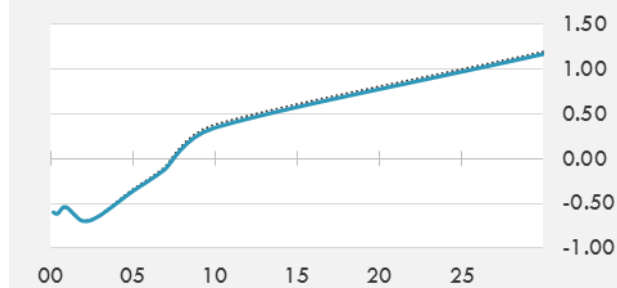
EUR/USD 30 DAYS SUPPORT & RESISTANCE

GBP/USD 30 DAYS SUPPORT & RESISTANCE

USD/JPY 30 DAYS SUPPORT & RESISTANCE

USD/CAD 30 DAYS SUPPORT & RESISTANCE


GLOBAL BOND INDICES

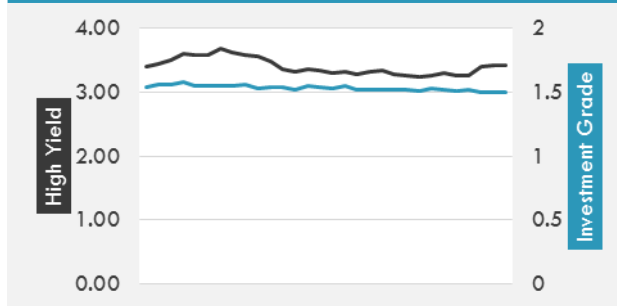
	Yield	ΔYield (in Bps)
Benchmark Indices		
US 10 Years Benchmark	2.2294	0.005
EU 10 Years Benchmark	0.343	-0.035
UK 10 Years Benchmark	1.058	-0.010
Sovereign Bonds		
US Treasury Bond	1.805	0.02
Eurozone Sovereign Bond	0.629	-0.012
U.K. Sovereign Bond	1.024	-0.01
Japan Sovereign Bond	0.11	-0.002
USD Emerging Sovereign Bond	4.606	0.086
Corporate Bonds		
US Investment Grade Bond	3.185	0.028
US High Yield Bond	5.759	0.077
EUR Investment Grade Bond	0.69	0.001
EUR High Yield Bond	2.704	0.125
USD Emerging Market IG & HY	4.77	0.132

US TREASURIES YIELD CURVE

EUR GENERIC YIELD CURVE


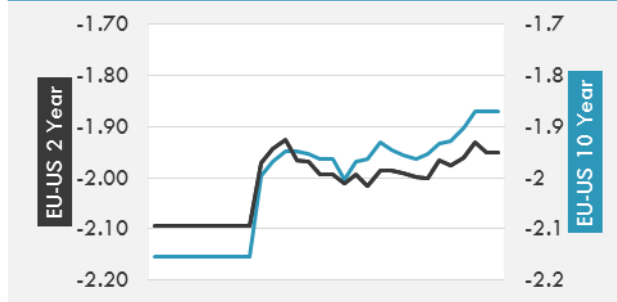
- Treasuries ended near session lows after late weakness, sparked by USD volatility that added to downside seen over morning session; Treasuries pressured in early session after heavy selling across front-Eurodollars were seen after Philadelphia Fed Index print.
- EGBs see choppy session Thursday. German 10y yields sit around 3bps lower heading into the close with peripherals and swap spreads wider as U.S. politics continue to dictate rates market direction.

OVERNIGHT RATES - SWAPS

	Yield	ΔYield (in Bps)
3M USD LIBOR	1.17839	0.0000
3M EUR EURIBOR	-0.331	0.0000
3M GBP LIBOR	0.31119	0.0000
3Y USD SWAP	1.6281	0.0256
5Y USD SWAP	1.8349	0.0238
10Y USD SWAP	2.156	0.0090
30Y USD SWAP	2.4257	-0.0201

USD CORPORATES - 30 DAYS SPREAD

FIXED INCOME SPREADS

	Spread	ΔSpread (in Bps)
USD 3M vs 10Y Spread	1.31489	(0.0152)
USD 2Y vs 10Y Spread	0.95714	(0.0172)
USD IG Spread	1.5	-
USD HY Spread	3.43	0.0200
EU vs US 10Y Spread	-1.8712	(0.0023)
EU vs US 2Y Spread	-1.9505	(0.0195)
EM vs Benchmark Spread	253.3	7.300

EU VS US - 30 DAYS SPREAD


GLOBAL COMMODITIES MARKET

	Last Price	Daily %
Commodity Index	83.42	-0.66%

Energy

WTI Crude Future	49.35	0.57%
Brent Crude Future	52.51	0.57%
NYMEX Gasoline	160.63	0.22%
NYMEX Heat Oil	154.53	0.77%
ICE Gasoil	465	0.32%
NYMEX Natural Gas	3.182	-0.31%

Precious Metals

Gold Spot \$/Oz	1247.07	-1.13%
Silver Spot \$/Oz	16.585	-1.89%
Platinum Spot \$/Oz	932.88	-1.43%
Palladium Spot \$/Oz	764.79	-2.53%
Gold Future	1252.8	-0.47%
Silver Future	16.67	-1.40%
Platinum Future	936.8	-0.98%
Palladium Future	765.45	-1.49%

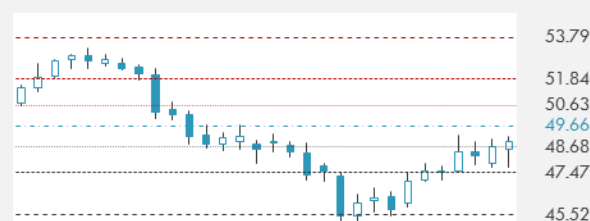
Base Metals

LME Aluminum	1923	-0.08%
LME Copper	5580	-0.53%
LME Zinc	2533	-1.09%
LME Nickel	9175	-0.43%
LME Lead	2072	-1.75%
LME Tin	20200	-0.88%

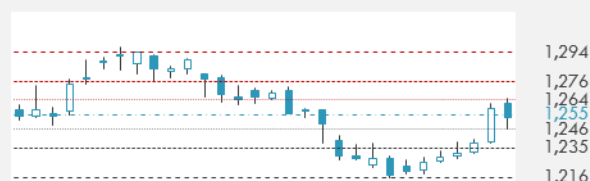
Agricultural

Corn CBT	366	-1.48%
Wheat CBT	425.75	-0.29%
Soybeans CBT	944.75	-3.18%
Bean Meal CBT	307.5	-2.47%
Rough Rice CBT	10.885	-0.23%
MDE Palm Oil	2626	-0.64%
Soybean CBT	32.44	-2.14%
Coffee ICE	129.65	-3.53%
Sugar #11 ICE	16.03	-1.66%
Cotton #2 ICE	79.24	-1.16%
Cocoa ICE	2084	1.46%
Ethanol CME	1.463	0.48%
Lumber CME	367.7	-1.61%
Orange Juice ICE	141.1	-0.56%
Live Cattle CME	119.65	0.69%
Feeder Cattle CME	149.35	1.10%
Lean Hogs CME	79.275	0.35%

COMMODITY INDEX SUPPORT & RESISTANCE

WTI OIL 30 DAYS SUPPORT & RESISTANCE


- Oil headed for a second weekly gain on optimism OPEC will reaffirm efforts to drain a global glut and as Algeria said it supported a proposal by Saudi Arabia and Russia to extend supply cuts.
- Gold heads for biggest weekly gain in more than a month.

GOLD 30 DAYS SUPPORT & RESISTANCE

SILVER 30 DAYS SUPPORT & RESISTANCE

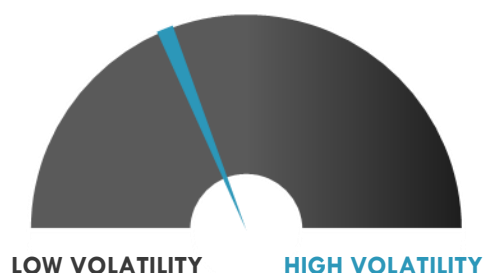

TOP 10 WINNERS

	Ticker	Last Price	Daily %
S&P 500 Stocks			
CARMAX INC	KMX	63.71	6.15
NVIDIA CORP	NVDA	133.07	4.19
QORVO INC	QRVO	75.55	4.15
WAL-MART STORES	WMT	77.54	3.22
VERTEX PHARM	VRTX	117.93	3.10
BROADCOM LTD	AVGO	237.66	2.80
ADVANCE AUTO PAR	AAP	148.51	2.73
APPLIED MATERIAL	AMAT	43.91	2.69
L BRANDS INC	LB	49.69	2.67
SKYWORKS SOLUTIO	SWKS	103.2	2.64

TOP 10 LOSERS

	Ticker	Last Price	Daily %
S&P 500 Stocks			
FRONTIER COMMUNI	FTR	1.3	-2.26
COLGATE-PALMOLIV	CL	73.93	-2.33
SOUTHWESTRN ENGY	SWN	6.84	-2.70
NEWMONT MINING	NEM	33.31	-2.77
WHIRLPOOL CORP	WHR	177.2	-2.79
NIELSEN HOLDINGS	NLSN	39.04	-2.91
PERRIGO CO PLC	PRGO	70.5	-3.52
MALLINCKRODT	MNK	40.87	-3.54
ENDO INTERNATIONAL	ENDP	11.84	-5.43
CISCO SYSTEMS	CSCO	31.38	-7.21

S&P 500 DISTRIBUTION

S&P VOLATILITY INDEX


- Apple is tapping the debt market again, issuing a dual-tranche euro denominated bond, even as it maintains a cash pile of over \$250B.
- Calling it a "proportionate and deterrent fine," the European Commission has slapped Facebook with a €110M penalty for providing "misleading information" about its purchase of WhatsApp in 2014.
- A fresh political crisis is hitting Brazil, reminiscent of last year's impeachment saga, following reports that President Michel Temer was secretly recorded discussing hush money pay-offs to a jailed associate.
- Once the world's biggest car company in terms of sales, General Motors has been retreating from several major and unprofitable markets under CEO Mary Barra.
- General Motors announces a series of international restructuring moves which it expects to lead to ~\$100M in annual savings.
- Unilever announces that it will buy back shares with a market value of €5B under a new repurchase program that launches tomorrow and runs through December 15, 2017.
- Microsoft is staking out new territory in the data-center race with plans to open two big facilities in Africa next year.
- What about the idea that Tesla trades at a valuation close to GM and Ford? "I do believe this market cap is higher than we have any right to deserve," - Elon Musk
- Facebook has a deal to broadcast a live Major League Baseball game each Friday.

KEY ECONOMIC INDICATORS

Country	Event	Surv(M)	Actual	Prior	Time
Bahrain	M1 Money Supply YoY	--	--	-0.62%	
Bahrain	M2 Money Supply YoY	--	--	1.62%	
Bahrain	M3 Money Supply YoY	--	--	1.11%	
Bahrain	CPI YoY	--	--	0.80%	
Canada	CPI YoY	1.70%	--	1.60%	15:30
Canada	CPI NSA MoM	0.50%	--	0.20%	15:30
Canada	Retail Sales MoM	0.30%	--	-0.60%	15:30
Canada	Retail Sales Ex Auto MoM	0.20%	--	-0.10%	15:30
Eurozone	Consumer Confidence	-3	--	-3.6	17:00
Germany	PPI MoM	0.20%	0.40%	0.00%	9:00
Germany	PPI YoY	3.20%	3.40%	3.10%	9:00
Italy	Current Account Balance	--	--	1193m	11:30
Russia	PPI YoY	9.10%	--	11.30%	
Russia	PPI MoM	0.00%	--	-0.30%	
United Arab Emirates	M1 Money Supply MoM	--	--	3.20%	
United Arab Emirates	M3 Money Supply MoM	--	--	1.60%	
United Arab Emirates	M2 Money Supply MoM	--	--	2.30%	
United Arab Emirates	CPI YoY	--	--	2.96%	
United Arab Emirates	CPI MoM	--	--	0.40%	
United States	Baker Hughes U.S. Rig Count	--	--	885	20:00

Banque BEMO sal
Head Office - Private and Corporate Banking

96 Pasteur Building, Pasteur Street, Medawar Area, P.O. Box: 16-6353, Beirut - Lebanon
 Tel: + 961 1 568 250 Fax: + 961 1 568 266

Investment & Research research@bemobank.com

Beirut Central District Riad El Solh Square, Esseily Building Bloc A, 7th Floor Beirut - Lebanon
 Tel: + 961 1 992 600 Fax: + 961 1 983 368
www.bemobank.com

Disclaimer:

This report is published for information purposes only. The information herein has been compiled from, or based upon sources considered to be reliable (Bloomberg, SeekingAlpha, DailyStar...), but we do not guarantee or assume responsibility for its completeness and accuracy. This document should not be construed as a solicitation to take part in any investment, or as constituting any representation or warranty on our part. This report is not to be relied upon in substitution for the exercise of specialists.

We may not have taken any steps to ensure that the securities referred to in this report are suitable for any particular investor. The investments and services contained or referred to herein are not purported to be exhaustive, any person considering an investment should seek specialist advice on the suitability of an investment.

Nothing in this report constitutes investment, legal, accounting or tax advice, or a representation that any investment or strategy is suitable or appropriate to your individual circumstances, or otherwise constitutes a personal recommendation. Clients understand that it is their responsibility to seek legal and/or tax advice regarding the legal and tax consequences of their investment transactions. The consequences of any action taken on the basis of information contained herein are solely the responsibility of the recipient.

Investment instruments are subject to risk, including possible loss of principal amount invested. Past performance should not be taken as an indication or guarantee of future performance, and no representation or warranty, express or implied, is made regarding future performance. The value of securities and financial instruments is subject to exchange rate fluctuation that may have a positive or adverse effect on the price or income of such securities or financial instruments. Some investments mentioned in this report may have a high level of volatility. High volatility investments may experience sudden and large falls in their value causing losses when that investment is realized. Some investments may not be readily realizable and it may be difficult to sell or realize those investments, similarly it may prove difficult to obtain reliable information about the value, or risks, to which such an investment is exposed.

This report may provide the addresses of websites or references. We have not reviewed any such site and takes no responsibility for the content contained therein. Such address or reference is provided solely for convenience and information. Accessing such website through this report shall be at the recipients own risk.