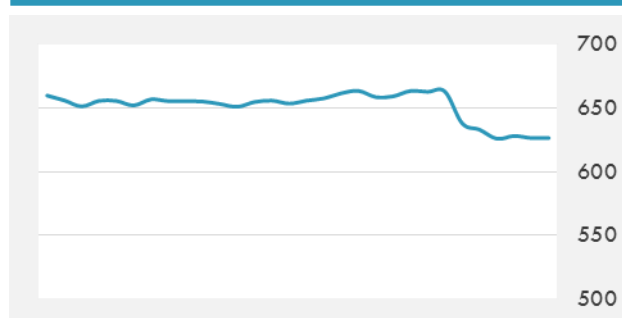
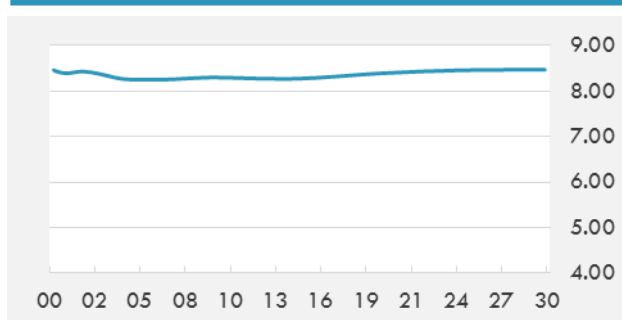


**BEIRUT STOCK EXCHANGE**

	Last	Daily %	YTD %	Dividend %
MSCI Lebanon	626.55	-0.26%	-12.20%	
<b>Development and Reconstruction</b>				
Solidere A	7.5	-1.96%	-27.75%	
Solidere B	7.6	-0.52%	-27.62%	
<b>Banking</b>				
Audi Listed	6	2.56%	-11.76%	8.32%
BLC Listed	0.93	0.00%	-6.06%	
BOB Listed	18.8	0.00%	0.00%	3.52%
Byblos Listed	1.6	0.00%	-5.88%	8.27%
BEMO Listed	1.3	0.00%	-23.53%	4.07%
BLOM Listed	10.97	-0.27%	3.49%	9.03%
<b>Trading</b>				
RYMCO	3.25	0.00%	0.00%	
<b>Industrial</b>				
Holcim	13.51	0.00%	14.98%	17.36%
Ciments Blancs	1.82	0.00%	15.92%	

**MSCI LEBANON INDEX - 30 DAYS CHART**

**LEBANESE USD SOVEREIGN CURVE**


- Fitch rating agency said Friday that the resignation of Prime Minister Saad Hariri will test the ability of the Lebanese banking system to confront the new crisis.
- The Department of Finance (DoF) – Abu Dhabi recently held a workshop to discuss the latest developments on financial systems and regulations related to government procurement frameworks, and introduce different government entities to the updates on VAT and tax regulations.

Source: Daily Star, Gulf Base

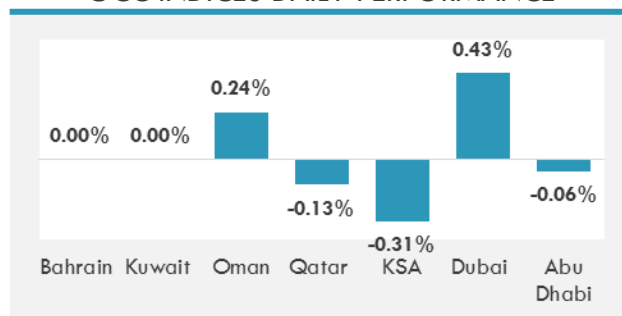
**GCC EQUITY INDICES**

	Last Price	Daily %	YTD %
Bahrain	1267.58	0.00%	1.30%
Kuwait	6258.47	0.00%	7.78%
Oman	5067.21	0.24%	-11.99%
Qatar	7875.63	-0.13%	-24.53%
KSA	6933.09	-0.31%	-3.85%
Dubai	3464.74	0.43%	-2.39%
Abu Dhabi	4373.73	-0.06%	-3.64%

**MSCI GCC INDEX - 30 DAYS CHART**

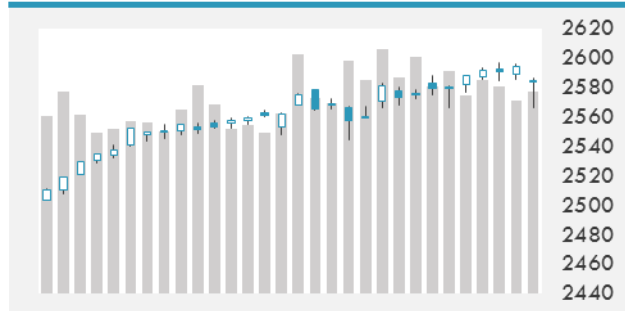
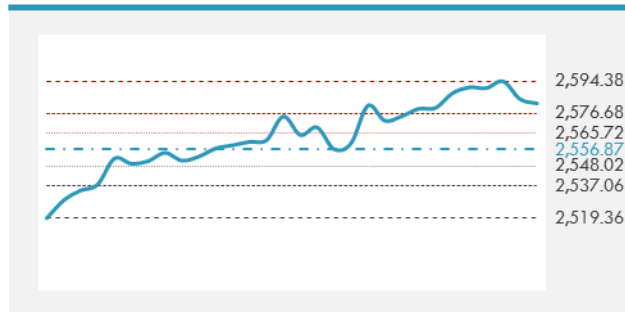
**LOCAL/GCC FOREIGN EXCHANGE**

	Cross	Last Price
Lebanese Pound Spot	USD/LBP	1506.5
Bahraini Dinar Spot	USD/BHD	0.3779
Kuwaiti Dinar Spot	USD/KWD	0.30257
Omani Rial Spot	USD/OMR	0.38495
Qatari Riyal Spot	USD/QAR	3.84
Saudi Riyal Spot	USD/SAR	3.7505
UAE Dirham Spot	USD/AED	3.673

**GCC INDICES DAILY PERFORMANCE**


**UNITED STATES EQUITY MARKET INDICES**

	Last Price	Daily %	YTD %	Δ10D Vol
<b>Major Indices</b>				
Dow Jones	23422.21	-0.17%	18.52%	-0.48%
S&P 500	2582.3	-0.09%	15.34%	-0.51%
Nasdaq	6750.939	0.01%	25.41%	-0.03%
<b>Sectors Indices</b>				
Discretionary	734.96	0.34%	13.45%	-0.08%
Staples	558.57	0.97%	5.04%	-1.04%
Energy	513.67	-0.81%	-7.36%	1.55%
Financials	432.27	-0.27%	11.83%	-0.07%
Healthcare	938.63	-0.66%	17.78%	-1.45%
Industrials	600.98	0.13%	11.69%	-0.44%
IT	1107.67	-0.09%	37.10%	0.07%
Materials	363.98	-0.15%	16.60%	-0.12%
Telecom	143.99	0.15%	-18.47%	-0.86%
Utilities	281.17	-0.44%	13.91%	0.53%
Real Estate	208.49	-0.01%	9.60%	0.46%

**S&P 500 INDEX - 30 DAYS CHART**

**S&P 500 SUPPORT & RESISTANCE**


- Japanese shares fell, with the Nikkei 225 Stock Average posting its biggest drop in seven months, as investors found no new reasons to buy after driving benchmarks to their highest in a quarter century.
- U.S. stock-index futures fall amid concerns that tax reform is encountering stumbling blocks, while consumer sentiment probably retreated in November.
- European stocks slipped, widening their first weekly decline in three weeks, as oil and gas companies fell, outweighing a gain in miners.

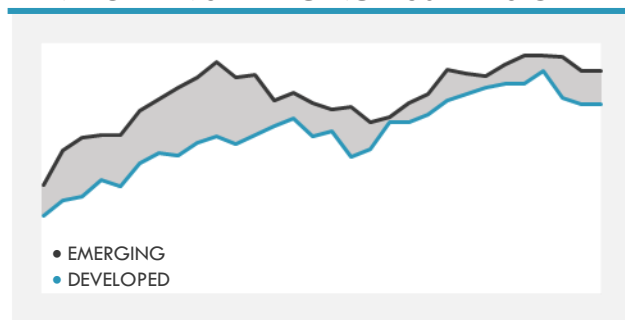
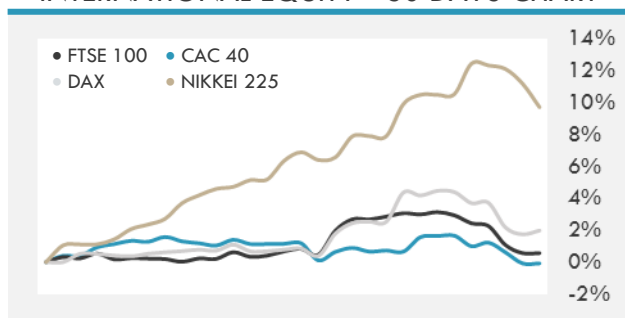
Source: Bloomberg

**INTERNATIONAL MARKETS INDICES**

	Last Price	Daily %	YTD %	Δ10D Vol
World	1216.92	-0.15%	18.03%	0.21%
Developed	2040.25	-0.10%	16.50%	0.09%
Emerging	1128.49	-0.47%	30.87%	0.91%
Frontier	2854.13	-0.54%	18.02%	0.58%
Europe	131.33	-0.37%	7.21%	0.03%
Latin America	2755.47	-1.09%	17.72%	0.35%
Asia Pacific	171.3	-0.31%	26.85%	0.66%

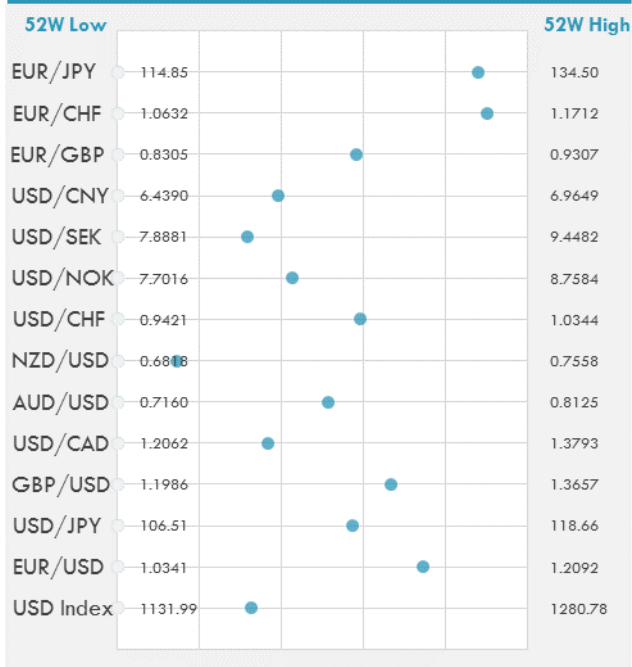
**INTERNATIONAL EQUITY INDICES**

	Last Price	Daily %	YTD %	Δ10D Vol
EuroStoxx 50	3593.76	-0.52%	9.22%	-0.12%
FTSE 100	7432.99	-0.68%	4.06%	0.76%
CAC 40	5380.72	-0.50%	10.66%	0.12%
DAX	13127.47	-0.42%	14.34%	-0.31%
Swiss SMI	9134.16	-0.48%	11.12%	0.34%
Nikkei 225	22380.99	-1.32%	17.09%	1.19%
CSI 300	4125.39	0.33%	24.63%	0.38%

**DEVELOPED VS EMERGING - 30 DAYS CHART**

**INTERNATIONAL EQUITY - 30 DAYS CHART**


**FOREIGN EXCHANGE MARKET**

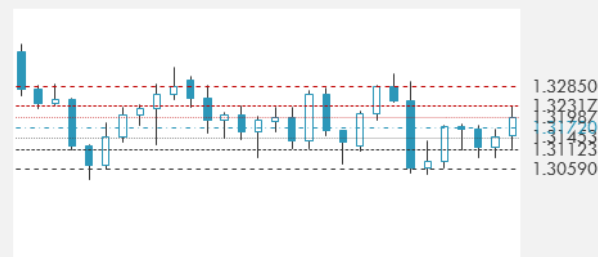
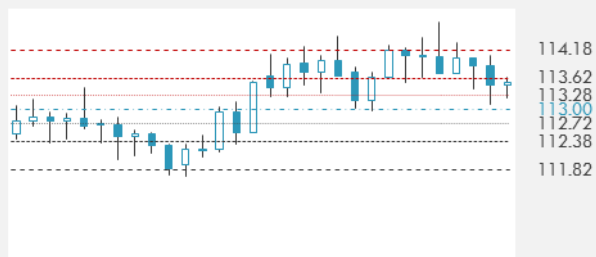
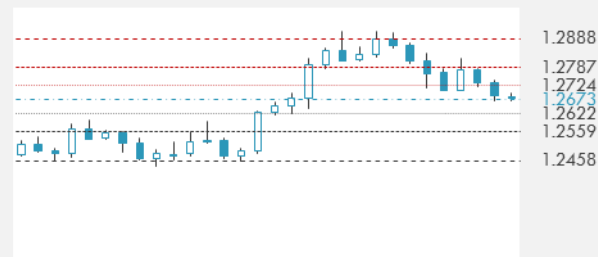
	Last Price	Daily %	Δ10D	Vol 25	ΔRR
<b>Major USD Cross Rate</b>					
USD Index	1179.53	0.11%	0.01%	-	
EUR/USD	1.165	-0.13%	0.06%	0.105	
USD/JPY	113.46	-0.06%	-0.55%	-0.803	
GBP/USD	1.3112	-0.64%	-0.15%	-0.078	
USD/CAD	1.2687	0.04%	-0.84%	0.298	
AUD/USD	0.7661	0.00%	-0.33%	-0.355	
NZD/USD	0.6932	-0.07%	-0.50%	-0.443	
USD/CHF	0.9966	0.05%	-0.28%	-0.375	
USD/NOK	8.1428	0.11%	-0.12%	0.235	
USD/SEK	8.3705	0.21%	-0.14%	0.260	
USD/CNY	6.6442	0.05%	-0.11%	0.115	
<b>Major EUR Cross Rate</b>					
EUR/GBP	0.88851	0.49%	-0.44%	0.280	
EUR/CHF	1.16096	-0.08%	-0.24%	-0.248	
EUR/JPY	132.18	-0.16%	-0.34%	-0.653	

**DISTANCE FROM 52 WEEKS LOW/HIGH**


- The pound dropped the most in a week as U.K. Prime Minister Theresa May faced fresh challenges to her leadership and the European Union cast doubt on the prospect of a December Brexit deal.
- The ruble strengthened for a second day, while government bonds fell, as investors awaited third-quarter GDP data due later today.
- Yen held steady as markets struggle to find reasons to sell the currency further amid uncertainty over the path of U.S. interest rates in 2018.

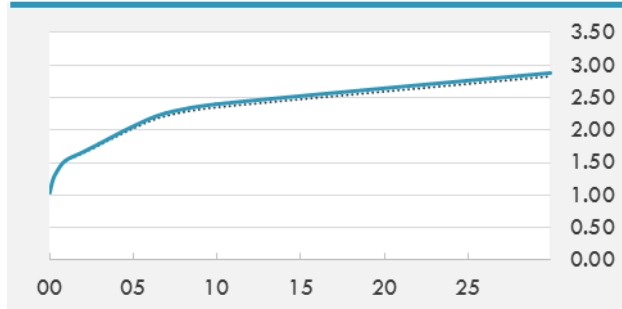
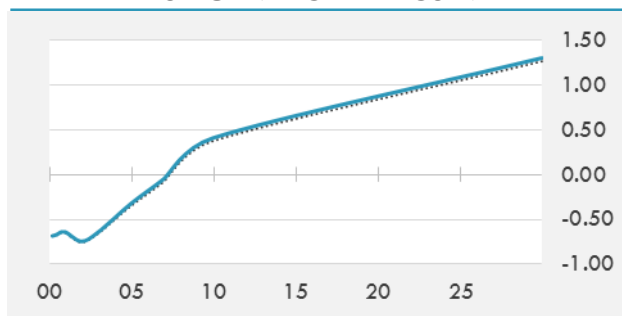
Source: Bloomberg

**EUR/USD 30 DAYS SUPPORT & RESISTANCE**

**GBP/USD 30 DAYS SUPPORT & RESISTANCE**

**USD/JPY 30 DAYS SUPPORT & RESISTANCE**

**USD/CAD 30 DAYS SUPPORT & RESISTANCE**


**GLOBAL BOND INDICES**

	Yield	ΔYield (in Bps)
<b>Benchmark Indices</b>		
US 10 Years Benchmark	2.3984	0.057
EU 10 Years Benchmark	0.41	0.035
UK 10 Years Benchmark	1.342	0.077
<b>Sovereign Bonds</b>		
US Treasury Bond	2.072	0.046
Eurozone Sovereign Bond	0.562	0.019
U.K. Sovereign Bond	1.317	0.064
Japan Sovereign Bond	0.105	0.011
USD Emerging Sovereign Bond	4.561	0.042
<b>Corporate Bonds</b>		
US Investment Grade Bond	3.262	0.057
US High Yield Bond	5.832	0.063
EUR Investment Grade Bond	0.557	0.025
EUR High Yield Bond	2.138	0.121
USD Emerging Market IG & HY	4.657	0.042

**US TREASURIES YIELD CURVE**

**EUR GENERIC YIELD CURVE**


- Treasuries ended near session lows after a gilt selloff into the London close weighed across the curve; downdraft accelerated on move through overnight lows, while curve ended off steepest levels of the session after a surge in Treasury futures volumes.
- Bunds open steady. Focus on gilt open after U.K. bonds set the tone on Friday, widening sharply. GBP/USD slips 0.8% in Asian hours as pressure mounts on U.K. Prime Minister May. BTP supply kicks off busy week of issuance.

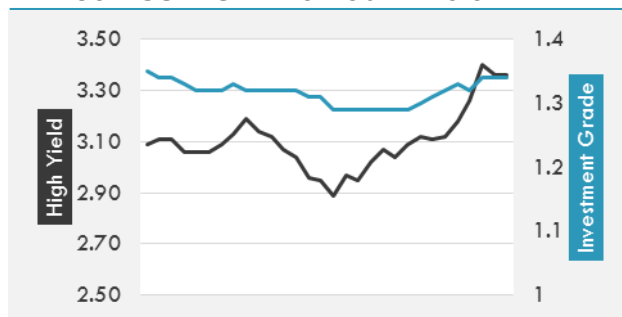
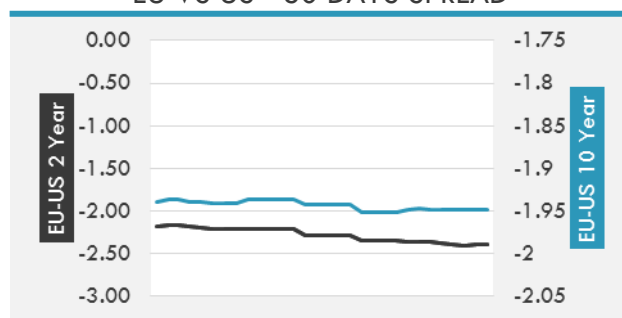
Source: Bloomberg

**OVERNIGHT RATES - SWAPS**

	Yield	ΔYield (in Bps)
3M USD LIBOR	1.41289	0.0000
3M EUR EURIBOR	-0.329	0.0000
3M GBP LIBOR	0.52813	0.0000
3Y USD SWAP	1.9649	0.0244
5Y USD SWAP	2.1185	0.0382
10Y USD SWAP	2.3788	0.0553
30Y USD SWAP	2.6161	0.0644

**FIXED INCOME SPREADS**

	Spread	ΔSpread (in Bps)
USD 3M vs 10Y Spread	1.17309	0.0646
USD 2Y vs 10Y Spread	0.7402	0.0379
USD IG Spread	1.34	-
USD HY Spread	3.36	(0.0400)
EU vs US 10Y Spread	-1.9885	(0.0044)
EU vs US 2Y Spread	-2.3997	0.0096
EM vs Benchmark Spread	225.7	(0.600)

**USD CORPORATES - 30 DAYS SPREAD**

**EU VS US - 30 DAYS SPREAD**


**GLOBAL COMMODITIES MARKET**

	Last Price	Daily %
Commodity Index	87.28	-0.20%

**Energy**

WTI Crude Future	56.74	-0.75%
Brent Crude Future	63.52	-0.64%
NYMEX Gasoline	181.24	-0.40%
NYMEX Heat Oil	193.49	-0.62%
ICE Gasoil	569	0.00%
NYMEX Natural Gas	3.213	0.41%

**Precious Metals**

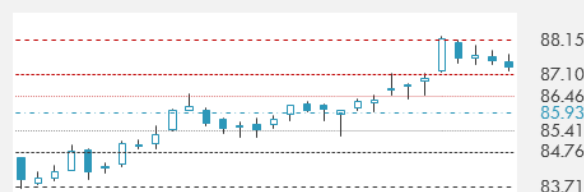
Gold Spot \$/Oz	1275.07	-0.78%
Silver Spot \$/Oz	16.8835	-0.68%
Platinum Spot \$/Oz	929.45	-0.88%
Palladium Spot \$/Oz	996.43	-1.52%
Gold Future	1274.2	-1.03%
Silver Future	16.871	-0.61%
Platinum Future	932.1	-0.90%
Palladium Future	993.1	-1.13%

**Base Metals**

LME Aluminum	2101	0.38%
LME Copper	6786	-0.32%
LME Zinc	3219	1.35%
LME Nickel	12110	-1.54%
LME Lead	2519	0.20%
LME Tin	19425	0.00%

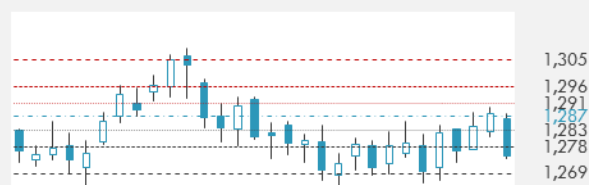
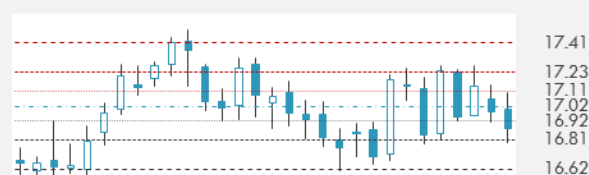
**Agricultural**

Corn CBT	343.5	0.59%
Wheat CBT	431.5	0.58%
Soybeans CBT	987	0.20%
Bean Meal CBT	316.6	0.86%
Rough Rice CBT	11.42	-0.13%
MDE Palm Oil	2797	-0.43%
Soybean CBT	34.96	-0.94%
Coffee ICE	130.9	0.85%
Sugar #11 ICE	14.96	0.54%
Cotton #2 ICE	69.14	0.88%
Cocoa ICE	2212	1.24%
Ethanol CME	1.456	1.11%
Lumber CME	459.6	0.92%
Orange Juice ICE	162.6	1.09%
Live Cattle CME	126.75	-1.38%
Feeder Cattle CME	157.175	-0.43%
Lean Hogs CME	70.25	0.04%

**COMMODITY INDEX SUPPORT & RESISTANCE**

**WTI OIL 30 DAYS SUPPORT & RESISTANCE**


- As OPEC prepares to meet and assess co-operation over its output curbs, some Middle East group members are selling oil to the world's biggest market at relatively cheaper prices versus top producer Saudi Arabia.

Source: Bloomberg

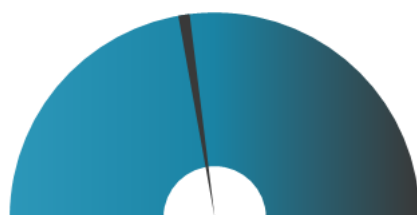
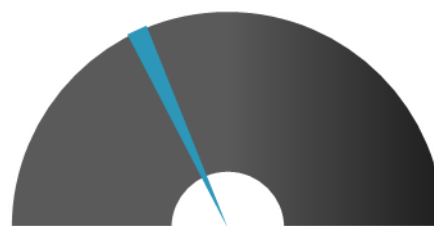
**GOLD 30 DAYS SUPPORT & RESISTANCE**

**SILVER 30 DAYS SUPPORT & RESISTANCE**


**TOP 10 WINNERS**

	Ticker	Last Price	Daily %
<b>S&amp;P 500 Stocks</b>			
NEWS CORP-CL B	NWS	15.55	5.42
NVIDIA CORP	NVDA	216.14	5.27
NEWS CORP-CL A	NWSA	15.1	5.15
MATTEL INC	MAT	14.62	4.95
KOHL'S CORP	KSS	43.04	4.54
UNDER ARMOUR-A	UAA	12.52	4.25
MONSTER BEVERAGE	MNST	61.16	4.23
TIME WARNER INC	TWX	90.6	4.08
CAMPBELL SOUP CO	CPB	47.42	3.90
UNDER ARMO-C	UA	11.37	3.46

**TOP 10 LOSERS**

	Ticker	Last Price	Daily %
<b>S&amp;P 500 Stocks</b>			
JOHNSON CONTROLS	JCI	36.93	-4.10
HENRY SCHEIN INC	HSIC	67.05	-3.75
CARDINAL HEALTH	CAH	58.55	-3.32
ENVISION HEALTHC	EVHC	24.95	-3.03
NATL OILWELL VAR	NOV	33.52	-2.98
THERMO FISHER	TMO	186.18	-2.98
NORWEGIAN CRUISE	NCLH	55.23	-2.92
COTY INC-CL A	COTY	16.31	-2.92
NEWELL BRANDS IN	NWL	29.3	-2.66
APACHE CORP	APA	44.13	-2.45

**S&P 500 DISTRIBUTION**

**WINNERS**
**LOSERS**
**S&P VOLATILITY INDEX**

**LOW VOLATILITY**
**HIGH VOLATILITY**

- "It should never have been possible" for a single staffer to temporarily deactivate President Trump's Twitter account, Jack Dorsey told the New York Times' DealBook conference.
- Robots have replaced many U.S. manufacturing workers, but new mechanical exoskeletons being tested by Ford may help factory workers function like bionic people.
- The EU is demanding Britain accept that Northern Ireland may need to remain inside the European customs union and single market after Brexit in order to avoid "a hard border on the island."
- Desperate for cash to avoid a possible delisting, Toshiba is considering the sale of new shares worth as much as ¥600B (\$5.3B).
- Nintendo plans to pick up the production pace for its Switch game console next year, WSJ reports, showing the company's deepening confidence in the device.
- UBER has lost an appeal to overturn a decision by a tribunal which said its drivers deserved workers' rights such as the minimum wage, in a blow to the taxi app as it battles to keep its license in London.
- General Electric has been awarded a \$643M contract to provide F110-GE-129 aircraft engines and related equipment and services to Qatar, Saudi Arabia and Bahrain.
- The company's eagerly bought up \$1.8B August bond offering priced to yield just 5.3%, and quickly slipped below par. The eight-year paper traded down to below \$0.94, or a yield of 6.32% - nearly 400 basis points above comparable maturity Treasuries.
- The U.S. is in talks to sell F-35 fighter jets to Persian Gulf partner nations, says a senior U.S. military official during a visit to the United Arab Emirates.

**KEY ECONOMIC INDICATORS**

Country	Event	Surv(M)	Actual	Prior	Time
China	Money Supply M2 YoY	9.20%	8.80%	9.20%	10:00
China	New Yuan Loans CNY	783.0b	663.2b	1270.0b	10:00
China	Money Supply M1 YoY	13.70%	13.00%	14.00%	10:00
China	Money Supply M0 YoY	7.00%	6.30%	7.20%	10:00
China	Aggregate Financing CNY	1100.0b	1040.0b	1820.0b	10:00
China	Foreign Direct Investment YoY CNY	--	--	17.30%	
Germany	Wholesale Price Index MoM	--	0.00%	0.60%	9:00
Germany	Wholesale Price Index YoY	--	3.00%	3.40%	9:00
Japan	PPI YoY	3.10%	3.40%	3.00%	1:50
Japan	Machine Tool Orders YoY	--	49.90%	45.00%	8:00
Japan	PPI MoM	0.10%	0.30%	0.20%	1:50
Japan	Loans & Discounts Corp YoY	--	3.50%	3.69%	1:50
Russia	GDP YoY	2.00%	--	2.50%	15:00
Russia	Budget Balance YTD	-365.0b	--	-300.6b	
United Kingdom	Rightmove House Prices MoM	--	-0.80%	1.10%	2:01
United Kingdom	Rightmove House Prices YoY	--	1.80%	1.40%	2:01
United Kingdom	PM May to Speak at Banquet				
United States	Monthly Budget Statement	-\$58.0b	--	-\$45.8b	21:00
United States	Fed's Harker Speaks				2:10
United States	Trump to Asia				

Source: Bloomberg

## Banque BEMO sal

### Head Office - Private and Corporate Banking

 96 Pasteur Building, Pasteur Street, Medawar Area, P.O. Box: 16-6353, Beirut - Lebanon  
 Tel: + 961 1 568 250 Fax: + 961 1 568 266

### Wealth & Investment Management [research@bemobank.com](mailto:research@bemobank.com)

 Beirut Central District Riad El Solh Square, Esseily Building Bloc A, 7th Floor Beirut - Lebanon  
 Tel: + 961 1 992 600 Fax: + 961 1 983 368  
[www.bemobank.com](http://www.bemobank.com)

#### Disclaimer:

This report is published for information purposes only. The information herein has been compiled from, or based upon sources considered to be reliable (Bloomberg, SeekingAlpha, DailyStar...), but we do not guarantee or assume responsibility for its completeness and accuracy. This document should not be construed as a solicitation to take part in any investment, or as constituting any representation or warranty on our part. This report is not to be relied upon in substitution for the exercise of specialists.

We may not have taken any steps to ensure that the securities referred to in this report are suitable for any particular investor. The investments and services contained or referred to herein are not purported to be exhaustive, any person considering an investment should seek specialist advice on the suitability of an investment.

Nothing in this report constitutes investment, legal, accounting or tax advice, or a representation that any investment or strategy is suitable or appropriate to your individual circumstances, or otherwise constitutes a personal recommendation. Clients understand that it is their responsibility to seek legal and/or tax advice regarding the legal and tax consequences of their investment transactions. The consequences of any action taken on the basis of information contained herein are solely the responsibility of the recipient.

Investment instruments are subject to risk, including possible loss of principal amount invested. Past performance should not be taken as an indication or guarantee of future performance, and no representation or warranty, express or implied, is made regarding future performance. The value of securities and financial instruments is subject to exchange rate fluctuation that may have a positive or adverse effect on the price or income of such securities or financial instruments. Some investments mentioned in this report may have a high level of volatility. High volatility investments may experience sudden and large falls in their value causing losses when that investment is realized. Some investments may not be readily realizable and it may be difficult to sell or realize those investments, similarly it may prove difficult to obtain reliable information about the value, or risks, to which such an investment is exposed.

This report may provide the addresses of websites or references. We have not reviewed any such site and takes no responsibility for the content contained therein. Such address or reference is provided solely for convenience and information. Accessing such website through this report shall be at the recipients own risk.