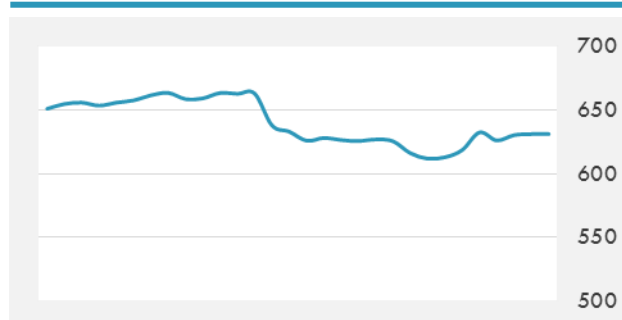
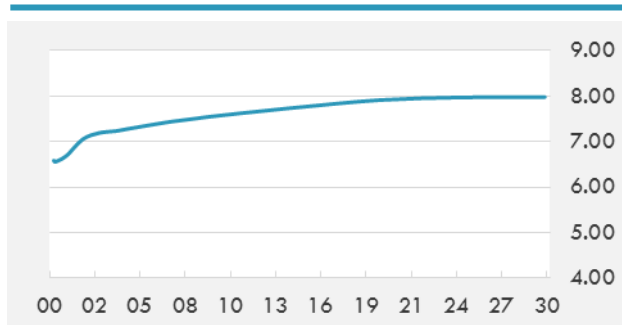


BEIRUT STOCK EXCHANGE

	Last	Daily %	YTD %	Dividend %
MSCI Lebanon	631.23	0.13%	-11.55%	
Development and Reconstruction				
Solidere A	7.94	-0.75%	-23.51%	
Solidere B	7.89	0.77%	-24.86%	
Banking				
Audi Listed	5.5	0.00%	-19.12%	9.06%
BLC Listed	0.93	0.00%	-6.06%	
BOB Listed	18.8	0.00%	0.00%	3.52%
Byblos Listed	1.6	0.00%	-5.88%	8.27%
BEMO Listed	1.3	0.00%	-23.53%	4.07%
BLOM Listed	11.05	0.55%	4.25%	8.96%
Trading				
RYMCO	3.25	0.00%	0.00%	
Industrial				
Holcim	14.66	-1.61%	24.77%	16.28%
Ciments Blancs	2.16	0.00%	37.58%	

MSCI LEBANON INDEX - 30 DAYS CHART

LEBANESE USD SOVEREIGN CURVE


- MEA chairman Mohammad Hout announced that the national carrier will receive five new Airbus 321 jets in the summer of 2019 in a bid to beef up its fleet.
- The average rates on the Lebanese pound returned to their normal levels Monday after reports that some commercial banks have offered up to 13 percent on pound deposits, bankers said Monday.

Source: Daily Star, Gulf Base

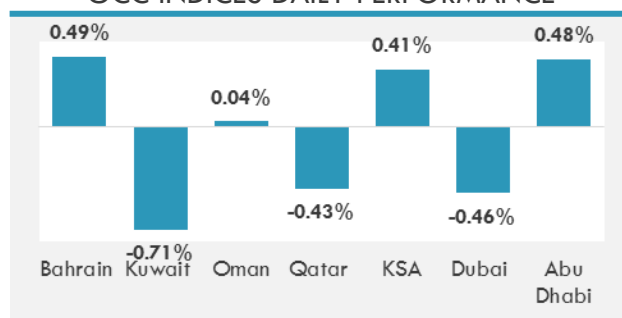
GCC EQUITY INDICES

	Last Price	Daily %	YTD %
Bahrain	1276.18	0.49%	5.27%
Kuwait	6210.02	-0.71%	7.59%
Oman	5110.53	0.04%	-11.60%
Qatar	7734.41	-0.43%	-25.68%
KSA	6967.35	0.41%	-3.22%
Dubai	3428.75	-0.46%	-3.43%
Abu Dhabi	4295.12	0.48%	-5.12%

MSCI GCC INDEX - 30 DAYS CHART

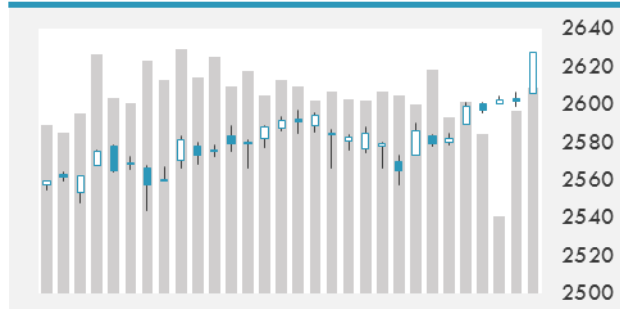
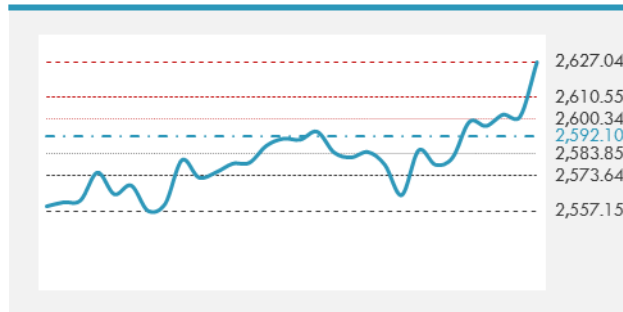
LOCAL/GCC FOREIGN EXCHANGE

	Cross	Last Price
Lebanese Pound Spot	USD/LBP	1511
Bahraini Dinar Spot	USD/BHD	0.37753
Kuwaiti Dinar Spot	USD/KWD	0.30171
Omani Rial Spot	USD/OMR	0.38501
Qatari Riyal Spot	USD/QAR	3.7425
Saudi Riyal Spot	USD/SAR	3.7503
UAE Dirham Spot	USD/AED	3.673

GCC INDICES DAILY PERFORMANCE


UNITED STATES EQUITY MARKET INDICES

	Last Price	Daily %	YTD %	Δ10D Vol
Major Indices				
Dow Jones	23836.71	1.09%	20.62%	1.58%
S&P 500	2627.04	0.98%	17.34%	1.21%
Nasdaq	6912.358	0.49%	28.41%	-0.38%
Sectors Indices				
Discretionary	761.08	1.09%	17.48%	1.47%
Staples	568.87	0.78%	6.97%	0.62%
Energy	498.87	0.82%	-10.03%	-0.95%
Financials	445.21	2.58%	15.18%	9.91%
Healthcare	951.67	0.71%	19.42%	0.07%
Industrials	611.81	1.48%	13.71%	2.30%
IT	1124.85	0.18%	39.22%	-0.15%
Materials	369.87	1.17%	18.49%	-0.72%
Telecom	151.64	2.22%	-14.14%	-1.35%
Utilities	284.5	0.43%	15.26%	-2.37%
Real Estate	206.16	-0.28%	8.37%	0.04%

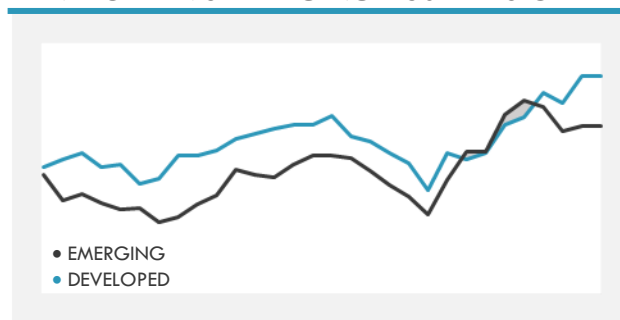
S&P 500 INDEX - 30 DAYS CHART

S&P 500 SUPPORT & RESISTANCE


- Japanese stocks rose as equity investors were unfazed by North Korea's latest missile launch.
- Stocks were mixed as Chinese shares swung between gains and losses and a North Korean missile test overshadowed a surge in U.S. equities. The dollar was little changed as U.S. tax cuts inched closer to reality.
- European stocks rose as the euro slid and energy shares advanced after Royal Dutch Shell Plc. said it will pay its entire dividend in cash for the first time in more than two years.

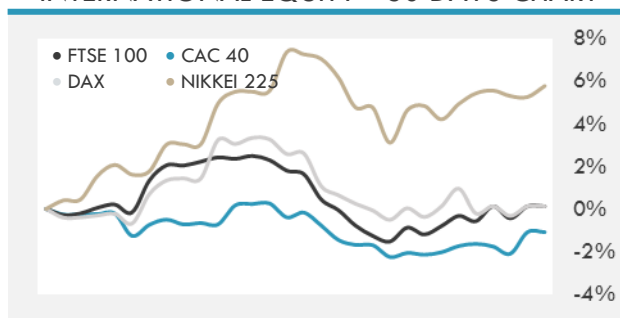
Source: Bloomberg

INTERNATIONAL MARKETS INDICES

	Last Price	Daily %	YTD %	Δ10D Vol
World	1233.08	0.48%	19.60%	-1.30%
Developed	2066.55	0.52%	18.01%	-1.20%
Emerging	1146.5	0.19%	32.96%	-1.16%
Frontier	2887.55	-0.08%	19.40%	0.33%
Europe	130.64	0.61%	6.65%	-0.10%
Latin America	2806.84	-0.02%	19.92%	-0.69%
Asia Pacific	171.98	-0.19%	27.35%	-2.42%

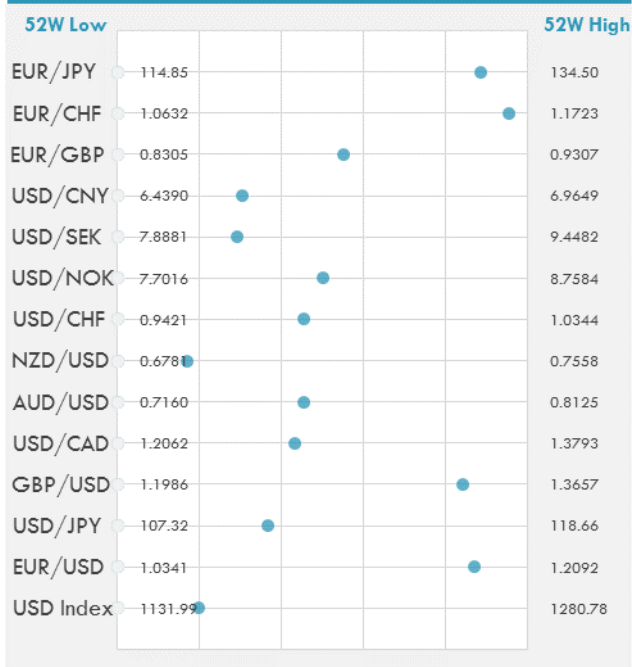
DEVELOPED VS EMERGING - 30 DAYS CHART

INTERNATIONAL EQUITY INDICES

	Last Price	Daily %	YTD %	Δ10D Vol
EuroStoxx 50	3583.49	0.55%	8.90%	0.19%
FTSE 100	7460.65	1.04%	4.45%	1.87%
CAC 40	5390.48	0.57%	10.86%	0.03%
DAX	13059.53	0.46%	13.75%	-0.04%
Swiss SMI	9320.44	0.61%	13.39%	-0.52%
Nikkei 225	22597.2	0.49%	18.22%	0.01%
CSI 300	4053.75	-0.05%	22.47%	-0.17%

INTERNATIONAL EQUITY - 30 DAYS CHART


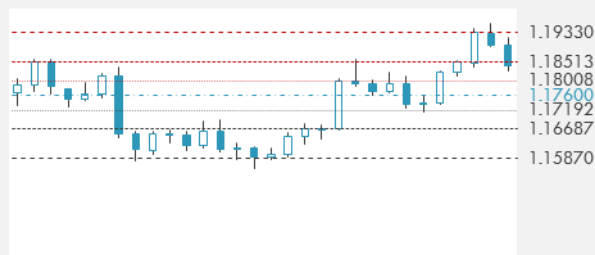
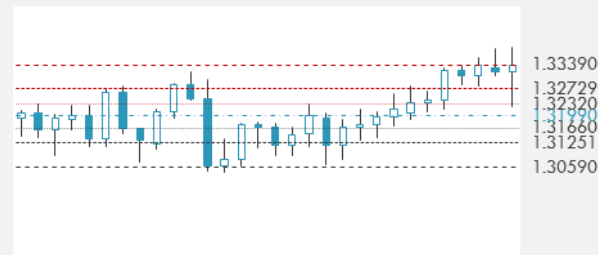
FOREIGN EXCHANGE MARKET

	Last Price	Daily %	Δ10D	Vol 25	ΔRR
Major USD Cross Rate					
USD Index	1161.37	-0.14%	-0.03%	-	
EUR/USD	1.1862	0.19%	-0.11%	0.548	
USD/JPY	111.48	0.00%	-0.13%	-0.658	
GBP/USD	1.3393	0.40%	0.27%	-0.373	
USD/CAD	1.2809	-0.05%	-0.01%	0.160	
AUD/USD	0.7598	0.04%	0.00%	-0.230	
NZD/USD	0.6912	0.17%	-0.44%	-0.278	
USD/CHF	0.9841	-0.01%	-0.94%	-0.488	
USD/NOK	8.2315	-0.17%	-0.24%	0.003	
USD/SEK	8.3427	-0.10%	-0.13%	0.505	
USD/CNY	6.5981	-0.15%	-0.03%	0.575	
Major EUR Cross Rate					
EUR/GBP	0.88566	-0.23%	-0.13%	0.440	
EUR/CHF	1.16732	0.16%	-0.49%	-0.145	
EUR/JPY	132.23	0.17%	0.12%	-0.408	

DISTANCE FROM 52 WEEKS LOW/HIGH


- Asia's emerging currencies were little changed as investors focused on President Trump's tax plan and the release of third-quarter U.S.
- Bitcoin surpassed \$10,000 for the first time, taking this year's price surge to more than 10-fold even as warnings multiply that the largest digital currency is an asset bubble.
- The dollar and pound were buoyed by political developments on both sides of the Atlantic as U.S. lawmakers made progress on tax plans and reports emerged of a breakthrough in negotiations over the U.K.'s exit from the European Union.

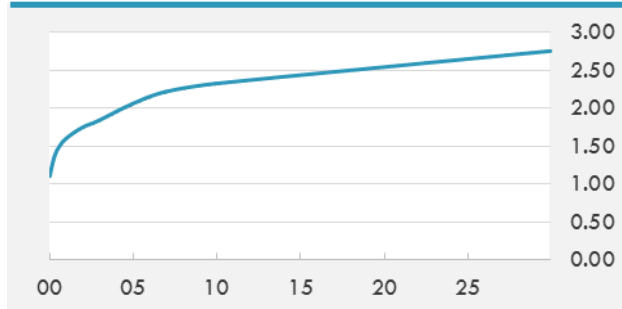
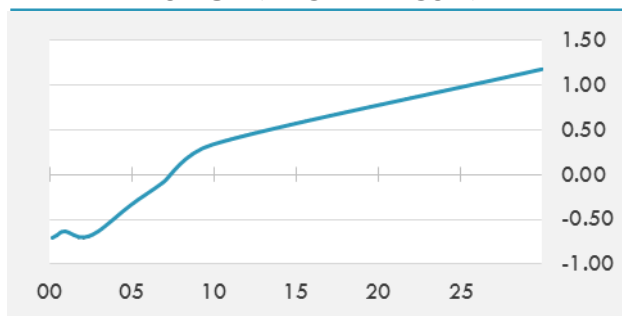
Source: Bloomberg

EUR/USD 30 DAYS SUPPORT & RESISTANCE

GBP/USD 30 DAYS SUPPORT & RESISTANCE

USD/JPY 30 DAYS SUPPORT & RESISTANCE

USD/CAD 30 DAYS SUPPORT & RESISTANCE


GLOBAL BOND INDICES

	Yield	ΔYield (in Bps)
Benchmark Indices		
US 10 Years Benchmark	2.3277	0.000
EU 10 Years Benchmark	0.339	-0.003
UK 10 Years Benchmark	1.253	0.000
Sovereign Bonds		
US Treasury Bond	2.085	0.009
Eurozone Sovereign Bond	0.505	-0.004
U.K. Sovereign Bond	1.255	0.012
Japan Sovereign Bond	0.107	0.002
USD Emerging Sovereign Bond	4.414	-0.002
Corporate Bonds		
US Investment Grade Bond	3.232	0.017
US High Yield Bond	5.764	0.001
EUR Investment Grade Bond	0.544	-0.001
EUR High Yield Bond	2.126	-0.001
USD Emerging Market IG & HY	4.556	-0.002

US TREASURIES YIELD CURVE

EUR GENERIC YIELD CURVE


- Treasury futures rose briefly as yen gained after N. Korea signaled an announcement was forthcoming but haven bids faded on a relatively contained statement. Long-end of JGB curve underpinned by light offers into BOJ's buyback operation. Spread between Aussie 10-year yield over Treasuries shrinks 2bps to 14bps, the tightest level since June.
- Bund futures stick in tight range, edging higher as European stocks slipped initially, supported by 2k block buyer. Italy 5y continues to outperform after recent supply cancellation in sector, though price action generally muted across EGBs.

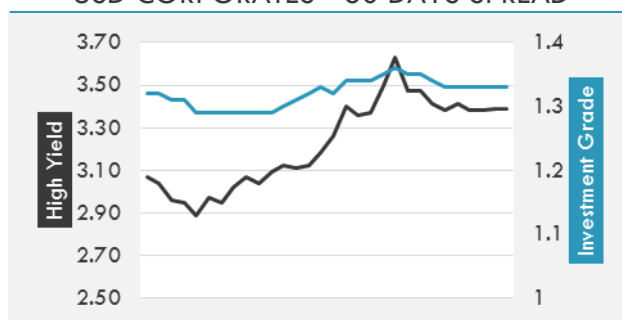
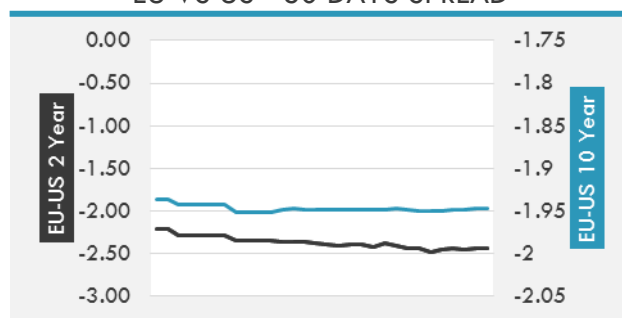
Source: Bloomberg

OVERNIGHT RATES - SWAPS

	Yield	ΔYield (in Bps)
3M USD LIBOR	1.47725	0.0000
3M EUR EURIBOR	-0.329	0.0000
3M GBP LIBOR	0.523	0.0000
3Y USD SWAP	2.0143	0.0038
5Y USD SWAP	2.1253	0.0119
10Y USD SWAP	2.3214	0.0009
30Y USD SWAP	2.5263	-0.0054

FIXED INCOME SPREADS

	Spread	ΔSpread (in Bps)
USD 3M vs 10Y Spread	1.04605	(0.0308)
USD 2Y vs 10Y Spread	0.57767	(0.0054)
USD IG Spread	1.33	-
USD HY Spread	3.39	0.0100
EU vs US 10Y Spread	-1.9766	0.0181
EU vs US 2Y Spread	-2.4388	0.0216
EM vs Benchmark Spread	218.3	(2.900)

USD CORPORATES - 30 DAYS SPREAD

EU VS US - 30 DAYS SPREAD


GLOBAL COMMODITIES MARKET

	Last Price	Daily %
Commodity Index	86.72	-0.21%

Energy

WTI Crude Future	57.99	-0.21%
Brent Crude Future	63.61	-0.36%
NYMEX Gasoline	177.2	-0.97%
NYMEX Heat Oil	195.07	0.15%
ICE Gasoil	566.5	0.27%
NYMEX Natural Gas	3.128	3.68%

Precious Metals

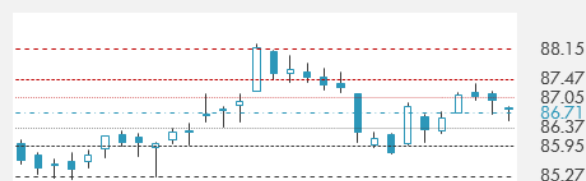
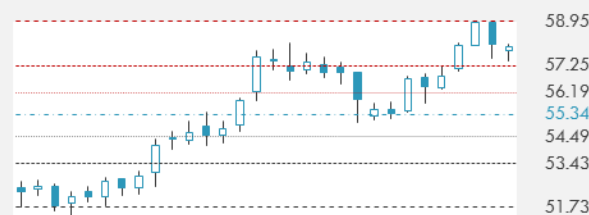
Gold Spot \$/Oz	1293.98	-0.04%
Silver Spot \$/Oz	16.8687	-1.05%
Platinum Spot \$/Oz	949.5	0.14%
Palladium Spot \$/Oz	1029.82	2.17%
Gold Future	1299.2	0.02%
Silver Future	16.918	-1.17%
Platinum Future	952.8	0.21%
Palladium Future	1020.65	2.01%

Base Metals

LME Aluminum	2103	-1.52%
LME Copper	6805	-1.97%
LME Zinc	3158	-0.91%
LME Nickel	11350	-1.90%
LME Lead	2427	-1.54%
LME Tin	19550	0.13%

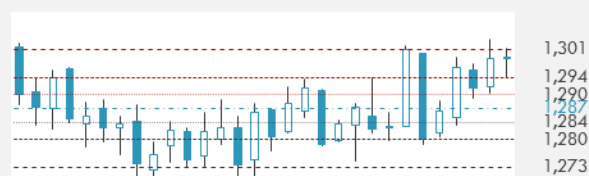
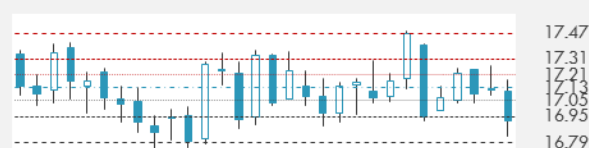
Agricultural

Corn CBT	349.75	-0.57%
Wheat CBT	429.25	0.23%
Soybeans CBT	993	-0.30%
Bean Meal CBT	325.8	-1.06%
Rough Rice CBT	12.305	0.08%
MDE Palm Oil	2587	-0.08%
Soybean CBT	34.13	1.16%
Coffee ICE	129.85	1.29%
Sugar #11 ICE	15.04	-2.27%
Cotton #2 ICE	72.14	1.01%
Cocoa ICE	2049	-0.87%
Ethanol CME	1.362	-1.59%
Lumber CME	426.2	2.40%
Orange Juice ICE	165.3	-0.90%
Live Cattle CME	125.675	-0.30%
Feeder Cattle CME	154.5	0.03%
Lean Hogs CME	71.525	2.03%

COMMODITY INDEX SUPPORT & RESISTANCE

WTI OIL 30 DAYS SUPPORT & RESISTANCE


- Oil extended declines for a third day as U.S. industry data showed crude stockpiles expanded before OPEC meets to decide on prolonging supply cuts past the end of March.

Source: Bloomberg

GOLD 30 DAYS SUPPORT & RESISTANCE

SILVER 30 DAYS SUPPORT & RESISTANCE


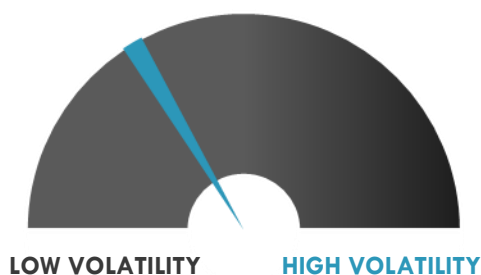
TOP 10 WINNERS

	Ticker	Last Price	Daily %
S&P 500 Stocks			
O'REILLY AUTOMOT	ORLY	228.47	5.61
ACUITY BRANDS	AYI	168.04	5.12
ULTA BEAUTY INC	ULTA	217.07	5.02
TRACTOR SUPPLY	TSCO	67.75	4.68
MACY'S INC	M	22.17	4.53
INTERPUBLIC GRP	IPG	19.39	4.36
WW GRAINGER INC	GWW	211.57	4.17
CHIPOTLE MEXICAN	CMG	285.86	4.13
AUTOZONE INC	AZO	664.22	4.12
WALGREENS BOOTS	WBA	72.24	4.11

TOP 10 LOSERS

	Ticker	Last Price	Daily %
S&P 500 Stocks			
BOSTON SCIENTIFC	BSX	26.39	-7.44
ADV MICRO DEVICE	AMD	11.17	-3.29
PUBLIC STORAGE	PSA	209.43	-2.56
BROADCOM LTD	AVGO	277.4	-2.54
EXTRA SPACE STOR	EXR	85.21	-2.51
REGENERON PHARM	REGN	366	-2.28
CBS CORP-B	CBS	54.76	-2.14
INCYTE CORP	INCY	95.83	-2.07
NVIDIA CORP	NVDA	210.71	-1.60
AES CORP	AES	10.57	-1.58

S&P 500 DISTRIBUTION

S&P VOLATILITY INDEX


- He'll be a tough act to follow, but Airbus has chosen Rolls-Royce executive Eric Schulz to replace "legendary" sales Chief John Leahy, who is set to retire next year. During his 23-year reign, Leahy transformed Airbus into an industry giant capable of battling Boeing, securing over 16,000 aircraft orders and racking up more than \$1.7T in jetliner deals.
- SpaceX has raised another \$100M as part of its latest funding round, according to new regulatory documents, valuing the startup at \$21.5B. Led by Elon Musk, SpaceX has been ramping up its rocket launches, including its reusable booster technology, and has dreams of providing high-speed internet satellites and an "interplanetary transport system" to Mars.
- GlaxoSmithKline files a New Drug Application (NDA) with the FDA seeking approval for a single-dose tafenoquine for the radical cure (prevention of relapse) of malaria in patients at least 16 years old.
- Exxon Mobil says it expects a new \$1B fuel upgrading unit at its Antwerp refinery to be fully operational in H1 of next year. The delayed coker unit will enable the 320K bl/day refinery to upgrade high-sulfur fuel into various types of diesel, including the variant mandated by new laws governing shipping fuels.
- In an SEC filing, AT&T says that it and Time Warner have agreed to extend the termination date of their merger plan to April 22, 2018. That comes as no particular surprise as the company gears up to fight a Justice Dept. lawsuit challenging the \$85B buyout, though it could signal just how patient the telecom giant will be with litigation that drags out. AT&T has said they want the case to move expeditiously, and the deal has already undergone lengthy review.

KEY ECONOMIC INDICATORS

Country	Event	Surv(M)	Actual	Prior	Time
Eurozone	Consumer Confidence	0.1	--	0.1	12:00
France	GDP QoQ	0.50%	--	0.50%	9:45
France	GDP YoY	2.20%	--	2.20%	9:45
Germany	CPI YoY	1.70%	--	1.60%	15:00
Germany	CPI MoM	0.30%	--	0.00%	15:00
Germany	CPI EU Harmonized YoY	1.70%	--	1.50%	15:00
Germany	CPI EU Harmonized MoM	0.20%	--	-0.10%	15:00
Japan	Retail Trade YoY	0.20%	-0.20%	2.20%	1:50
Japan	Coking Coal Imports MT	--	5279696	5979285	2:30
Qatar	M1 Money Supply YoY	--	--	-3.15%	
Qatar	M2 Money Supply YoY	--	--	14.49%	
Saudi Arabia	M2 Money Supply YoY	--	-1.40%	1.80%	16:31
United Kingdom	Mortgage Approvals	65.0k	--	66.2k	11:30
United Kingdom	BOE's Carney Speaks				16:00
United States	GDP Annualized QoQ	3.20%	--	3.00%	15:30
United States	DOE U.S. Crude Oil Inventories	-2950k	--	-1855k	17:30
United States	MBA Mortgage Applications	--	--	0.10%	14:00
United States	Pending Home Sales MoM	1.00%	--	0.00%	17:00
United States	GDP Price Index	2.20%	--	2.20%	15:30
United States	Fed's Yellen Testifies				17:00

Source: Bloomberg

Banque BEMO sal

Head Office - Private and Corporate Banking

 96 Pasteur Building, Pasteur Street, Medawar Area, P.O. Box: 16-6353, Beirut - Lebanon
 Tel: + 961 1 568 250 Fax: + 961 1 568 266

Wealth & Investment Management research@bemobank.com

 Beirut Central District Riad El Solh Square, Esseily Building Bloc A, 7th Floor Beirut - Lebanon
 Tel: + 961 1 992 600 Fax: + 961 1 983 368
www.bemobank.com

Disclaimer:

This report is published for information purposes only. The information herein has been compiled from, or based upon sources considered to be reliable (Bloomberg, SeekingAlpha, DailyStar...), but we do not guarantee or assume responsibility for its completeness and accuracy. This document should not be construed as a solicitation to take part in any investment, or as constituting any representation or warranty on our part. This report is not to be relied upon in substitution for the exercise of specialists.

We may not have taken any steps to ensure that the securities referred to in this report are suitable for any particular investor. The investments and services contained or referred to herein are not purported to be exhaustive, any person considering an investment should seek specialist advice on the suitability of an investment.

Nothing in this report constitutes investment, legal, accounting or tax advice, or a representation that any investment or strategy is suitable or appropriate to your individual circumstances, or otherwise constitutes a personal recommendation. Clients understand that it is their responsibility to seek legal and/or tax advice regarding the legal and tax consequences of their investment transactions. The consequences of any action taken on the basis of information contained herein are solely the responsibility of the recipient.

Investment instruments are subject to risk, including possible loss of principal amount invested. Past performance should not be taken as an indication or guarantee of future performance, and no representation or warranty, express or implied, is made regarding future performance. The value of securities and financial instruments is subject to exchange rate fluctuation that may have a positive or adverse effect on the price or income of such securities or financial instruments. Some investments mentioned in this report may have a high level of volatility. High volatility investments may experience sudden and large falls in their value causing losses when that investment is realized. Some investments may not be readily realizable and it may be difficult to sell or realize those investments, similarly it may prove difficult to obtain reliable information about the value, or risks, to which such an investment is exposed.

This report may provide the addresses of websites or references. We have not reviewed any such site and takes no responsibility for the content contained therein. Such address or reference is provided solely for convenience and information. Accessing such website through this report shall be at the recipients own risk.