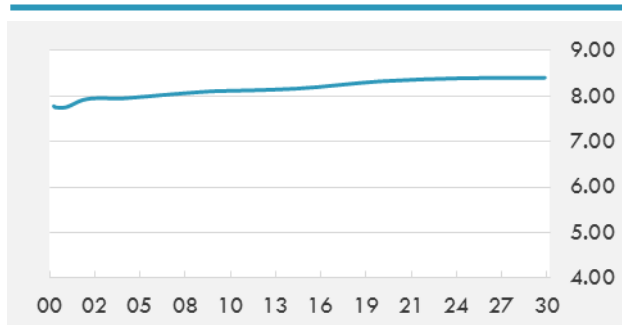


BEIRUT STOCK EXCHANGE

	Last	Daily %	YTD %	Dividend %
MSCI Lebanon	625.98	-1.13%	-12.28%	
Development and Reconstruction				
Solidere A	7.59	0.80%	-26.88%	
Solidere B	7.51	1.49%	-28.48%	
Banking				
Audi Listed	5.85	-0.85%	-13.97%	8.52%
BLC Listed	0.93	0.00%	-6.06%	
BOB Listed	18.8	0.00%	0.00%	3.52%
Byblos Listed	1.63	0.00%	-4.12%	8.12%
BEMO Listed	1.3	0.00%	-23.53%	4.07%
BLOM Listed	11	-2.65%	3.77%	8.96%
Trading				
RYMCO	3.25	0.00%	0.00%	
Industrial				
Holcim	14.75	0.34%	25.53%	16.18%
Ciments Blancs	1.82	0.00%	15.92%	

MSCI LEBANON INDEX - 30 DAYS CHART

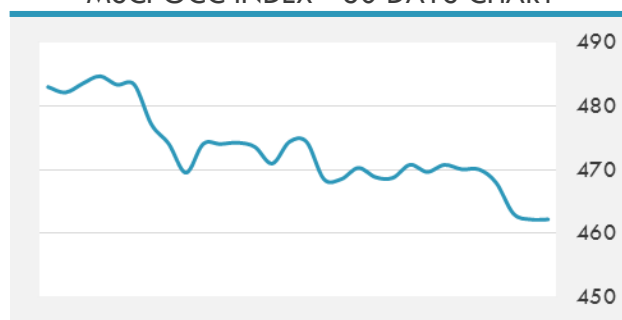
LEBANESE USD SOVEREIGN CURVE


- President Michel Aoun and Speaker Nabih Berri Wednesday maintained that Saad Hariri was still prime minister and that his shock resignation was unconstitutional.
- Interbank rates in Lebanese pounds surged up to 15 percent Tuesday but eventually returned to their normal levels, a banker said Wednesday.
- Bank Audi warned Wednesday that the new government taxes could adversely affect private sector investments in Lebanon.

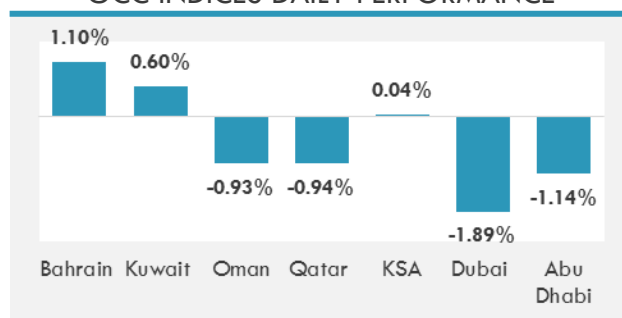
Source: Daily Star, Gulf Base

GCC EQUITY INDICES

	Last Price	Daily %	YTD %
Bahrain	1266.81	1.10%	3.85%
Kuwait	6180.07	0.60%	7.17%
Oman	5031.16	-0.93%	-12.64%
Qatar	7856.24	-0.94%	-24.66%
KSA	6936.49	0.04%	-3.80%
Dubai	3414.92	-1.89%	-2.15%
Abu Dhabi	4369.06	-1.14%	-3.51%

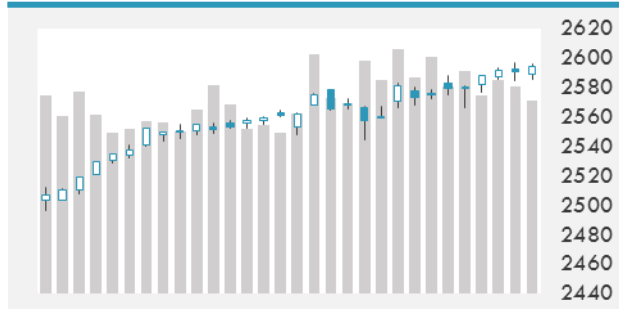
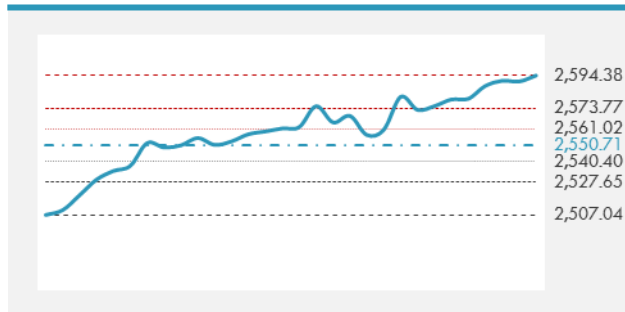
MSCI GCC INDEX - 30 DAYS CHART

LOCAL/GCC FOREIGN EXCHANGE

	Cross	Last Price
Lebanese Pound Spot	USD/LBP	1511
Bahraini Dinar Spot	USD/BHD	0.37796
Kuwaiti Dinar Spot	USD/KWD	0.30281
Omani Rial Spot	USD/OMR	0.38501
Qatari Riyal Spot	USD/QAR	3.8387
Saudi Riyal Spot	USD/SAR	3.7509
UAE Dirham Spot	USD/AED	3.673

GCC INDICES DAILY PERFORMANCE


UNITED STATES EQUITY MARKET INDICES

	Last Price	Daily %	YTD %	Δ10D Vol
Major Indices				
Dow Jones	23563.36	0.03%	19.23%	-0.20%
S&P 500	2594.38	0.14%	15.88%	0.00%
Nasdaq	6789.118	0.32%	26.12%	-0.29%
Sectors Indices				
Discretionary	731.24	0.06%	12.88%	-0.04%
Staples	553.37	1.08%	4.06%	1.44%
Energy	516.35	-0.40%	-6.88%	0.84%
Financials	434.95	-0.60%	12.53%	-0.62%
Healthcare	945.21	0.22%	18.61%	-1.23%
Industrials	607.98	-0.19%	12.99%	-0.09%
IT	1118.2	0.49%	38.40%	-0.06%
Materials	367.72	0.02%	17.80%	-3.69%
Telecom	143.4	0.46%	-18.81%	-0.11%
Utilities	282.1	-0.03%	14.29%	0.02%
Real Estate	208.52	0.74%	9.62%	-1.78%

S&P 500 INDEX - 30 DAYS CHART

S&P 500 SUPPORT & RESISTANCE


- A measure of Asian stocks that's outperformed U.S. and European peers this year pulled back after breaching its record high closing level as investors paused amid a global bull run that's taken indexes to all-time highs.
- U.S. stocks edged higher, advancing for the sixth time in seven days, as a rally in consumer staples firms outweighed a slump in financials companies.
- European stocks ended the session little changed as a rally in retailers outweighed a plunge in automotive companies.

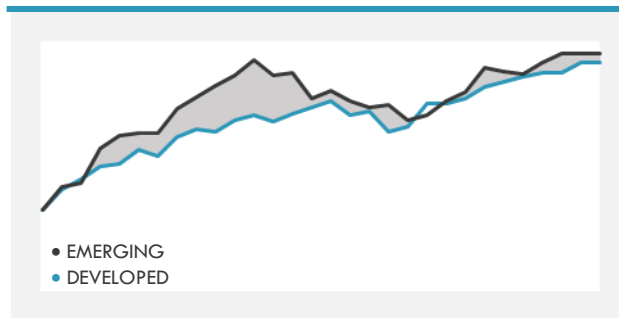
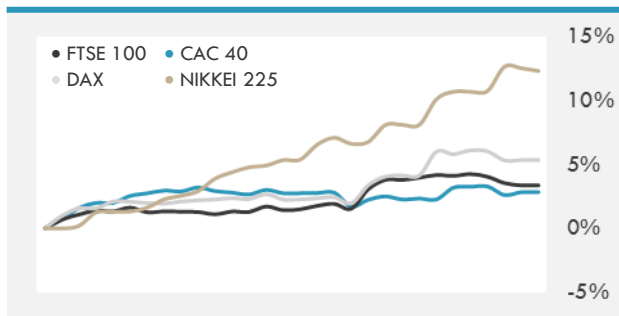
Source: Bloomberg

INTERNATIONAL MARKETS INDICES

	Last Price	Daily %	YTD %	Δ10D Vol
World	1223.18	0.17%	18.64%	-0.09%
Developed	2050.7	0.19%	17.10%	0.02%
Emerging	1134.68	0.01%	31.59%	-1.48%
Frontier	2856.17	0.38%	18.11%	0.47%
Europe	133.26	-0.01%	8.79%	-1.87%
Latin America	2821.45	2.00%	20.54%	5.31%
Asia Pacific	171.82	0.19%	27.23%	-0.73%

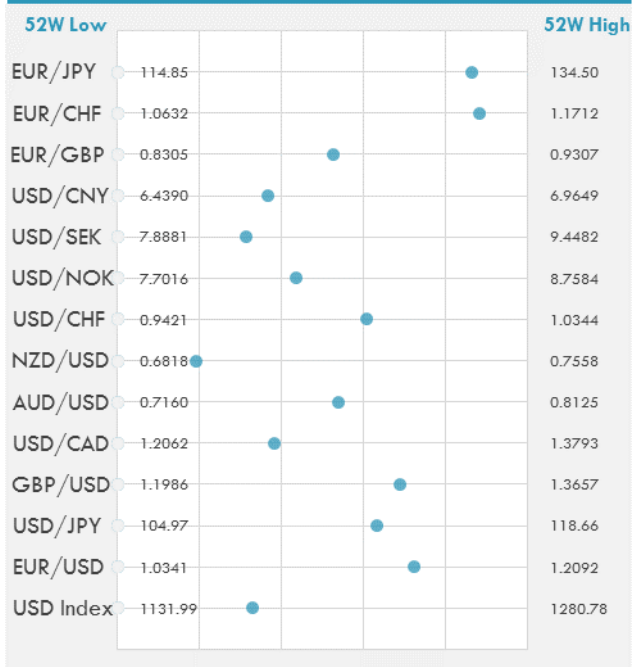
INTERNATIONAL EQUITY INDICES

	Last Price	Daily %	YTD %	Δ10D Vol
EuroStoxx 50	3655.04	-0.10%	11.08%	-2.62%
FTSE 100	7529.72	0.22%	5.42%	-0.42%
CAC 40	5471.43	-0.17%	12.53%	-3.93%
DAX	13382.42	0.02%	16.56%	-0.67%
Swiss SMI	9265.83	0.50%	12.72%	-2.22%
Nikkei 225	22868.71	-0.20%	19.64%	-0.74%
CSI 300	4054.9	0.17%	22.50%	0.13%

DEVELOPED VS EMERGING - 30 DAYS CHART

INTERNATIONAL EQUITY - 30 DAYS CHART


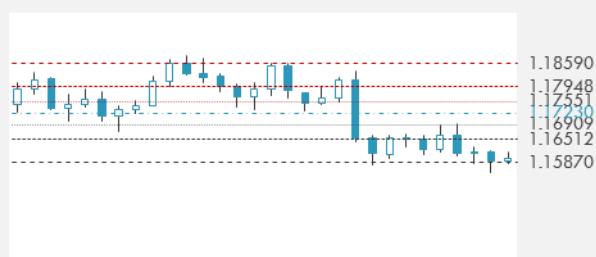
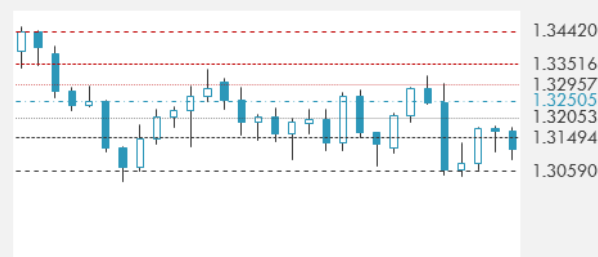
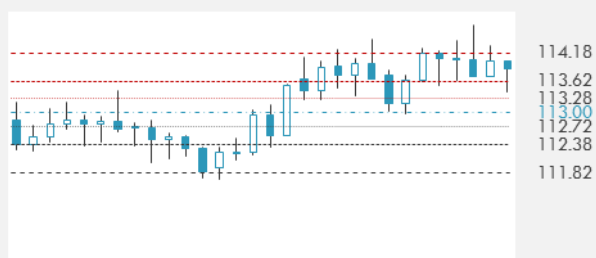
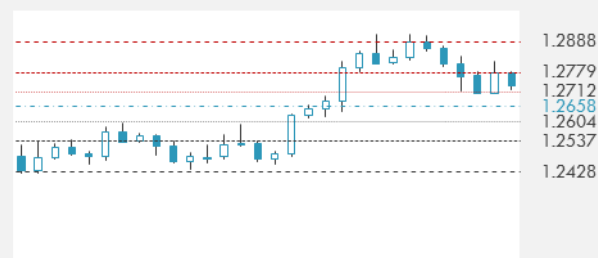
FOREIGN EXCHANGE MARKET

	Last Price	Daily %	Δ10D	Vol 25	ΔRR
Major USD Cross Rate					
USD Index	1180.88	-0.08%	0.00%	-	
EUR/USD	1.1604	0.08%	-0.39%	-0.018	
USD/JPY	113.6	-0.24%	-0.06%	-0.453	
GBP/USD	1.3137	0.16%	-0.04%	-0.055	
USD/CAD	1.2722	-0.05%	-0.12%	0.255	
AUD/USD	0.768	0.03%	-0.08%	-0.345	
NZD/USD	0.6959	-0.10%	-0.15%	-0.570	
USD/CHF	0.9982	-0.19%	0.11%	-0.385	
USD/NOK	8.1599	-0.07%	-0.24%	0.308	
USD/SEK	8.3779	-0.04%	-0.21%	0.180	
USD/CNY	6.6321	0.06%	-0.05%	-0.100	
Major EUR Cross Rate					
EUR/GBP	0.88328	-0.08%	-0.01%	0.230	
EUR/CHF	1.1583	-0.11%	-0.34%	-0.235	
EUR/JPY	131.82	-0.16%	-1.07%	-0.515	

DISTANCE FROM 52 WEEKS LOW/HIGH


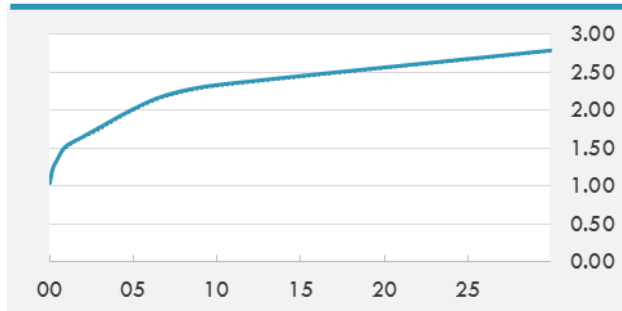
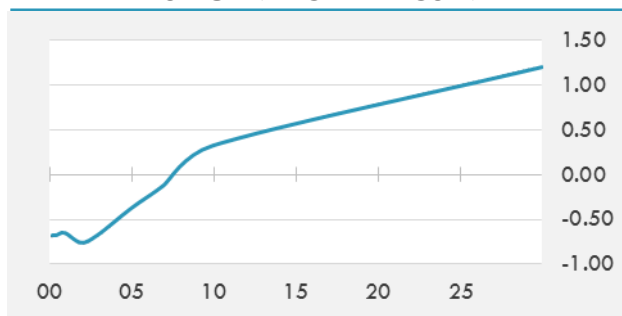
- Emerging Asian currencies were mostly trading with a positive bias on risk appetite ahead of the U.S. senate taking up the tax reform bill.
- The dollar declined slightly amid uncertainty about U.S. tax reform, with the Senate planning to unveil its bill Thursday morning.
- Yen gained on concerns over a possible delay to U.S. tax reforms and as Treasury yields eased. Bonds rose as a rally in JGB futures drove the super-long zone higher while collateral demand pushed up the shorter-dated prices.

Source: Bloomberg

EUR/USD 30 DAYS SUPPORT & RESISTANCE

GBP/USD 30 DAYS SUPPORT & RESISTANCE

USD/JPY 30 DAYS SUPPORT & RESISTANCE

USD/CAD 30 DAYS SUPPORT & RESISTANCE


GLOBAL BOND INDICES

	Yield	ΔYield (in Bps)
Benchmark Indices		
US 10 Years Benchmark	2.3343	0.020
EU 10 Years Benchmark	0.326	-0.001
UK 10 Years Benchmark	1.225	-0.006
Sovereign Bonds		
US Treasury Bond	2.022	0.016
Eurozone Sovereign Bond	0.498	0.017
U.K. Sovereign Bond	1.228	-0.007
Japan Sovereign Bond	0.084	-0.008
USD Emerging Sovereign Bond	4.505	0.03
Corporate Bonds		
US Investment Grade Bond	3.185	0.021
US High Yield Bond	5.67	0.102
EUR Investment Grade Bond	0.496	0.009
EUR High Yield Bond	1.87	0.139
USD Emerging Market IG & HY	4.588	0.034

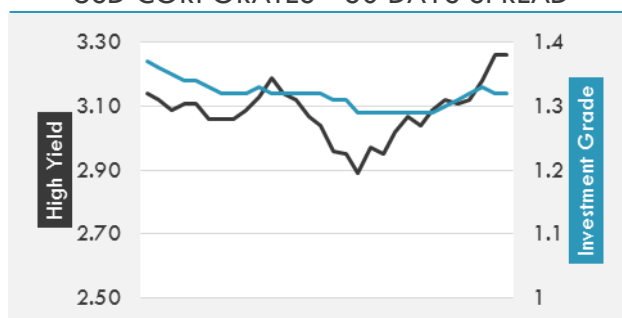
US TREASURIES YIELD CURVE

EUR GENERIC YIELD CURVE


- Benchmark Treasury bill yields rose Wednesday, led by the three-month tenor, as the market digests supply and prices in Fed hike expectations.
- Peripheral yields bounce higher, snapping recent declines during quiet market trading. Core bonds little changed with some underperformance in France, amid cross market block trade going through in the futures space versus bunds.

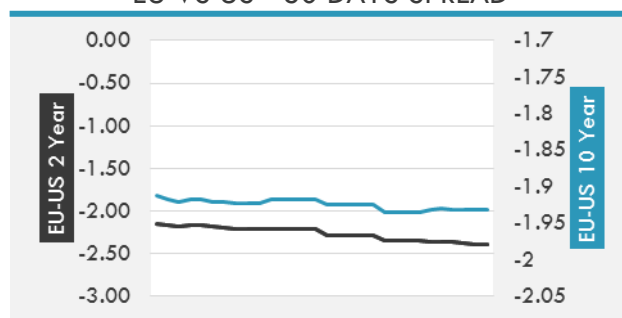
Source: Bloomberg

OVERNIGHT RATES - SWAPS

	Yield	ΔYield (in Bps)
3M USD LIBOR	1.40258	0.0000
3M EUR EURIBOR	-0.329	0.0000
3M GBP LIBOR	0.52322	0.0000
3Y USD SWAP	1.9454	0.0077
5Y USD SWAP	2.0693	0.0044
10Y USD SWAP	2.309	0.0150
30Y USD SWAP	2.5304	0.0124

USD CORPORATES - 30 DAYS SPREAD

FIXED INCOME SPREADS

	Spread	ΔSpread (in Bps)
USD 3M vs 10Y Spread	1.10377	0.0008
USD 2Y vs 10Y Spread	0.68507	0.0035
USD IG Spread	1.32	(0.0100)
USD HY Spread	3.26	0.0800
EU vs US 10Y Spread	-1.9858	0.0010
EU vs US 2Y Spread	-2.3917	(0.0086)
EM vs Benchmark Spread	224.7	0.700

EU VS US - 30 DAYS SPREAD


GLOBAL COMMODITIES MARKET

	Last Price	Daily %
Commodity Index	87.64	0.12%

Energy

WTI Crude Future	56.81	-0.68%
Brent Crude Future	63.49	-0.31%
NYMEX Gasoline	182.13	0.33%
NYMEX Heat Oil	192.16	-0.02%
ICE Gasoil	562.75	-0.09%
NYMEX Natural Gas	3.175	0.73%

Precious Metals

Gold Spot \$/Oz	1281.36	0.48%
Silver Spot \$/Oz	17.0395	0.53%
Platinum Spot \$/Oz	931.7	1.02%
Palladium Spot \$/Oz	1016.1	1.93%
Gold Future	1283.7	0.62%
Silver Future	17.138	1.17%
Platinum Future	937.9	1.36%
Palladium Future	1015.8	2.18%

Base Metals

LME Aluminum	2109	-1.08%
LME Copper	6855	0.42%
LME Zinc	3192	0.82%
LME Nickel	12700	0.36%
LME Lead	2507	0.42%
LME Tin	19450	-0.15%

Agricultural

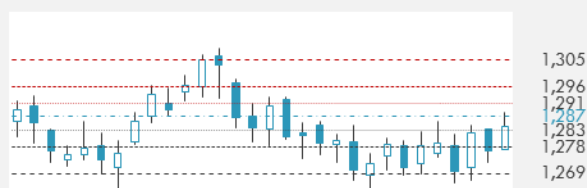
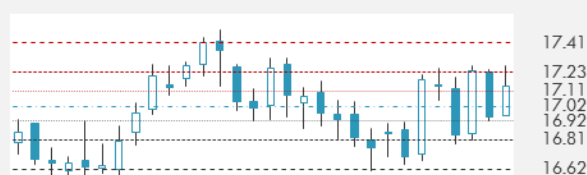
Corn CBT	348.25	0.14%
Wheat CBT	426.75	-0.12%
Soybeans CBT	998.5	0.25%
Bean Meal CBT	315.2	-0.10%
Rough Rice CBT	11.41	-0.91%
MDE Palm Oil	2820	1.26%
Soybean CBT	35.37	1.00%
Coffee ICE	125.75	0.84%
Sugar #11 ICE	14.84	0.82%
Cotton #2 ICE	68.86	0.58%
Cocoa ICE	2188	2.29%
Ethanol CME	1.446	-1.50%
Lumber CME	455.8	-0.28%
Orange Juice ICE	160.75	0.41%
Live Cattle CME	122.925	-1.36%
Feeder Cattle CME	156.9	-2.26%
Lean Hogs CME	63.55	-0.59%

COMMODITY INDEX SUPPORT & RESISTANCE

WTI OIL 30 DAYS SUPPORT & RESISTANCE


- Oil traded near \$57 a barrel after swinging wildly in the previous session as investors focused on U.S. crude production that climbed to the highest in more than three decades.

Source: Bloomberg

GOLD 30 DAYS SUPPORT & RESISTANCE

SILVER 30 DAYS SUPPORT & RESISTANCE


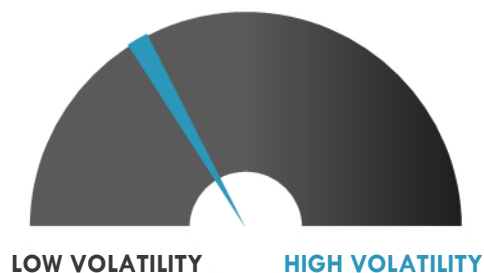
TOP 10 WINNERS

	Ticker	Last Price	Daily %
S&P 500 Stocks			
ACTIVISION BLIZZ	ATVI	64.55	5.89
H&R BLOCK INC	HRB	25.25	5.12
MGM RESORTS INTE	MGM	33.06	5.09
DXC TECHNOLOGY C	DXC	96.75	4.56
TRIPADVISOR INC	TRIP	31.66	4.32
LENNAR CORP-A	LEN	58.56	3.68
COLGATE-PALMOLIV	CL	73.27	3.34
KELLOGG CO	K	62.82	3.25
HANESBRANDS INC	HBI	19.69	3.20
WESTERN UNION	WU	19.75	3.08

TOP 10 LOSERS

	Ticker	Last Price	Daily %
S&P 500 Stocks			
DAVITA INC	DVA	54.34	-7.84
CSRA INC	CSRA	29.56	-6.84
TIME WARNER INC	TWX	88.5	-6.51
CHESAPEAKE ENERG	CHK	3.97	-5.02
HUMANA INC	HUM	243.48	-5.01
TAPESTRY INC	TPR	40.08	-4.41
ENVISION HEALTHC	EVHC	24.79	-3.62
ROCKWELL AUTOMAT	ROK	193.78	-3.51
QUINTILES IMS HO	Q	104.72	-3.21
INCYTE CORP	INCY	104.98	-2.92

S&P 500 DISTRIBUTION

S&P VOLATILITY INDEX


- After experimenting with longer tweets in September, Twitter is now doubling its longstanding 140-character count to all languages where "cramming" was an issue.
- CEO Evan Spiegel revealed that Snapchat is working on a significant app overhaul even though it might be "disruptive to our business in the short term."
- Target is closing a dozen stores across a handful of states, including Michigan, Florida, Illinois and Texas, but not until after the holidays.
- Iranian President Hassan Rouhani has called the missile attacks on Riyadh by Yemen's Houthis a reaction to "Saudi aggression" and said the kingdom was making a "strategic mistake" by considering the U.S. a friend and Iran an enemy.
- UBER has struck a deal with NASA to develop software for managing "flying taxi" routes in the air, marking its first partnership with a U.S. federal government agency.
- The IMF is urging Japan to maintain its massive monetary stimulus in support of struggling consumer prices amid criticism that it's distorting markets and local stocks.
- "The longer we wait, the greater the danger grows, and the fewer the options become," President Trump told South Korea's National Assembly, saying Kim Jong-un has turned North Korea into "a hell that no person deserves."
- Boeing has completed the acquisition of Aurora Flight Sciences, a manufacturer of advanced aerospace platforms and autonomous systems.
- Apple plans to have an augmented reality headset ready in 2019 and shipping as early as the following year, according to Bloomberg.

KEY ECONOMIC INDICATORS

Country	Event	Surv(M)	Actual	Prior	Time
Canada	New Housing Price Index MoM	0.20%	--	0.10%	15:30
China	CPI YoY	1.80%	1.90%	1.60%	3:30
China	PPI YoY	6.60%	6.90%	6.90%	3:30
France	Bank of France Ind. Sentiment	105	--	104	9:30
Germany	Trade Balance	22.3b	--	20.0b	9:00
Germany	Exports SA MoM	-1.30%	--	3.10%	9:00
Germany	Current Account Balance	23.5b	--	17.8b	9:00
Germany	Imports SA MoM	0.30%	--	1.20%	9:00
Japan	BoP Current Account Balance	¥2363.4b	¥2271.2b	¥2380.4b	1:50
Japan	Core Machine Orders MoM	-2.00%	-8.10%	3.40%	1:50
Japan	Core Machine Orders YoY	2.00%	-3.50%	4.40%	1:50
Japan	Trade Balance BoP Basis	¥832.5b	¥852.2b	¥318.7b	1:50
Japan	BoP Current Account Adjusted	¥2053.3b	¥1835.1b	¥2266.9b	1:50
Japan	Bankruptcies YoY	--	7.32%	4.62%	6:30
Japan	Bank Lending Incl Trusts YoY	3.00%	2.80%	3.00%	1:50
Japan	BOJ Summary of Opinions				1:50
United Kingdom	RICS House Price Balance	4%	1%	6%	2:01
United States	Initial Jobless Claims	232k	--	229k	15:30
United States	Wholesale Inventories MoM	0.30%	--	0.30%	17:00
United States	Continuing Claims	1885k	--	1884k	15:30

Source: Bloomberg

Banque BEMO sal
Head Office - Private and Corporate Banking

 96 Pasteur Building, Pasteur Street, Medawar Area, P.O. Box: 16-6353, Beirut - Lebanon
 Tel: + 961 1 568 250 Fax: + 961 1 568 266

Wealth & Investment Management research@bemobank.com

 Beirut Central District Riad El Solh Square, Esseily Building Bloc A, 7th Floor Beirut - Lebanon
 Tel: + 961 1 992 600 Fax: + 961 1 983 368
www.bemobank.com
Disclaimer:

This report is published for information purposes only. The information herein has been compiled from, or based upon sources considered to be reliable (Bloomberg, SeekingAlpha, DailyStar...), but we do not guarantee or assume responsibility for its completeness and accuracy. This document should not be construed as a solicitation to take part in any investment, or as constituting any representation or warranty on our part. This report is not to be relied upon in substitution for the exercise of specialists.

We may not have taken any steps to ensure that the securities referred to in this report are suitable for any particular investor. The investments and services contained or referred to herein are not purported to be exhaustive, any person considering an investment should seek specialist advice on the suitability of an investment.

Nothing in this report constitutes investment, legal, accounting or tax advice, or a representation that any investment or strategy is suitable or appropriate to your individual circumstances, or otherwise constitutes a personal recommendation. Clients understand that it is their responsibility to seek legal and/or tax advice regarding the legal and tax consequences of their investment transactions. The consequences of any action taken on the basis of information contained herein are solely the responsibility of the recipient.

Investment instruments are subject to risk, including possible loss of principal amount invested. Past performance should not be taken as an indication or guarantee of future performance, and no representation or warranty, express or implied, is made regarding future performance. The value of securities and financial instruments is subject to exchange rate fluctuation that may have a positive or adverse effect on the price or income of such securities or financial instruments. Some investments mentioned in this report may have a high level of volatility. High volatility investments may experience sudden and large falls in their value causing losses when that investment is realized. Some investments may not be readily realizable and it may be difficult to sell or realize those investments, similarly it may prove difficult to obtain reliable information about the value, or risks, to which such an investment is exposed.

This report may provide the addresses of websites or references. We have not reviewed any such site and takes no responsibility for the content contained therein. Such address or reference is provided solely for convenience and information. Accessing such website through this report shall be at the recipients own risk.