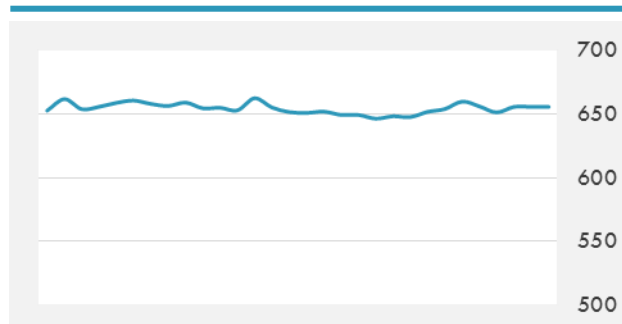
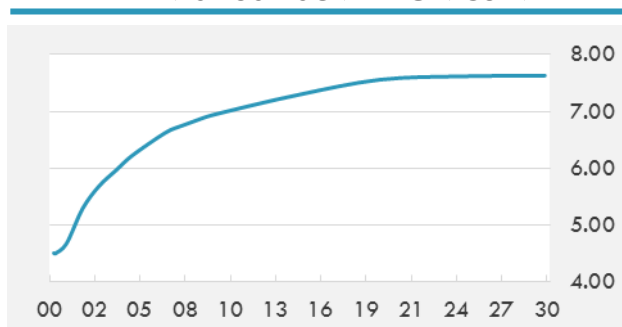


BEIRUT STOCK EXCHANGE

	Last	Daily %	YTD %	Dividend %
Development and Reconstruction				
Solidere A	7.99	0.13%	-23.03%	
Solidere B	7.96	-0.50%	-24.19%	
Solidere GDR	7.6	0.00%	-24.00%	
Banking				
Audi Listed	5.85	0.00%	-13.97%	8.52%
BLC Listed	0.93	0.00%	-6.06%	0.00%
BOB Listed	18.8	0.00%	0.00%	3.52%
Byblos Listed	1.61	0.00%	-5.29%	8.22%
BEMO Listed	1.3	0.00%	-23.53%	4.07%
BLOM Listed	11.65	0.00%	9.91%	8.54%
Trading				
RYMCO	3.25	0.00%	0.00%	
Industrial				
Holcim	13.99	0.00%	19.06%	17.06%
Ciments Blancs	1.82	0.00%	15.92%	0.00%

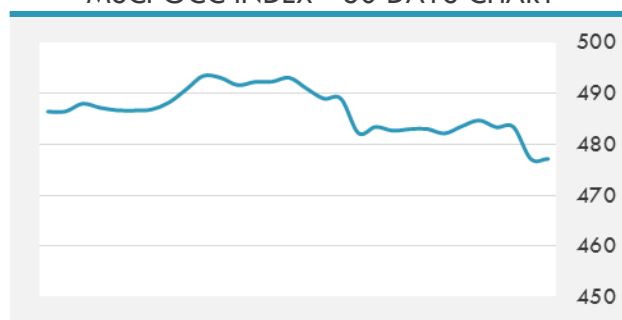
MSCI LEBANON INDEX - 30 DAYS CHART

LEBANESE USD SOVEREIGN CURVE


- Saudi Arabia is expected to decide by the end of this month on the timing of domestic fuel and electricity price hikes that could risk pushing the economy further into recession, sources familiar with the matter told Reuters.
- Qatar's Public Works Authority (Ashgal) said work has started on more than 18 development projects worth over QR4 billion (\$1.07 billion) in the Al Khor region of the country.

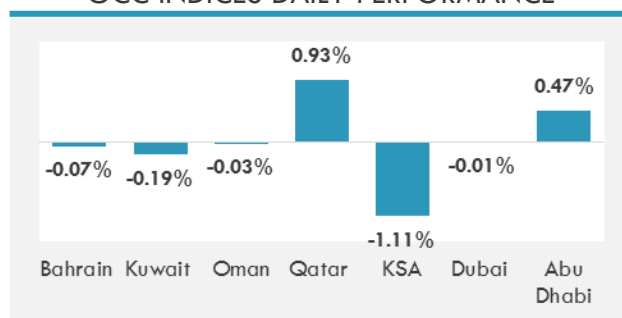
Source: Daily Star, Gulf Base

GCC EQUITY INDICES

	Last Price	Daily %	YTD %
Bahrain	1273.18	-0.07%	4.32%
Kuwait	6649.19	-0.19%	15.68%
Oman	5166.62	-0.03%	-10.65%
Qatar	8212.86	0.93%	-21.31%
KSA	7114.01	-1.11%	-1.34%
Dubai	3610.82	-0.01%	2.26%
Abu Dhabi	4450.65	0.47%	-2.11%

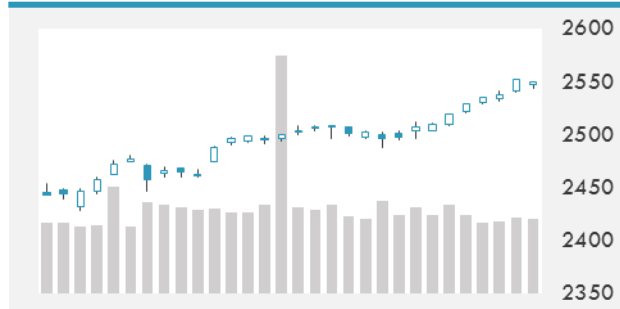
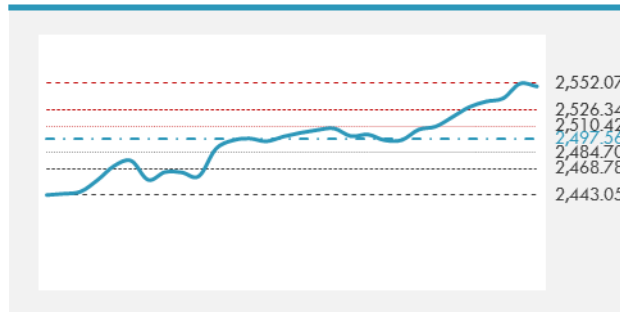
MSCI GCC INDEX - 30 DAYS CHART

LOCAL/GCC FOREIGN EXCHANGE

	Cross	Last Price
Lebanese Pound Spot	USD/LBP	1506.5
Bahraini Dinar Spot	USD/BHD	0.37725
Kuwaiti Dinar Spot	USD/KWD	0.30226
Omani Rial Spot	USD/OMR	0.38499
Qatari Riyal Spot	USD/QAR	3.6659
Saudi Riyal Spot	USD/SAR	3.7502
UAE Dirham Spot	USD/AED	3.673

GCC INDICES DAILY PERFORMANCE


UNITED STATES EQUITY MARKET INDICES

	Last Price	Daily %	YTD %	Δ10D Vol
Major Indices				
Dow Jones	22773.67	-0.01%	15.24%	-0.62%
S&P 500	2549.33	-0.11%	13.87%	-0.40%
Nasdaq	6590.18	0.07%	22.42%	-2.89%
Sectors Indices				
Discretionary	730.37	0.15%	12.74%	-0.79%
Staples	553.77	-0.95%	4.13%	0.88%
Energy	503.79	-0.82%	-9.15%	-2.23%
Financials	437.25	0.04%	13.12%	-0.31%
Healthcare	959.6	-0.07%	20.41%	-0.55%
Industrials	612.37	-0.05%	13.81%	0.07%
IT	1033.46	0.29%	27.91%	-5.21%
Materials	362.96	-0.19%	16.27%	0.37%
Telecom	160.56	-2.03%	-9.09%	4.81%
Utilities	270.89	-0.06%	9.75%	-1.11%
Real Estate	200.18	-0.20%	5.23%	0.04%

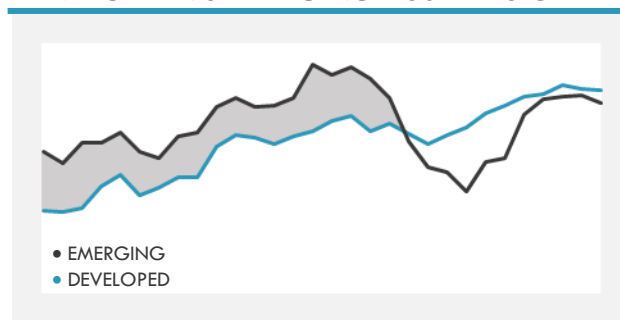
S&P 500 INDEX - 30 DAYS CHART

S&P 500 SUPPORT & RESISTANCE


- Asia stocks advanced as traders in Japan and South Korea returned from holidays, propelling the regional benchmark to a three-week high amid a broad weakness in the dollar.
- U.S. stocks fell as GE and DaVita led a retreat in health-care and industrial shares. Financials halted a rally as a number of Wall Street banks, including JPMorgan, BofA and Citi, get set to start 3Q earnings season.
- European stocks advanced, after falling the most in more than a month Friday, as a jump in utilities firms outweighed a slump in natural resources firms.

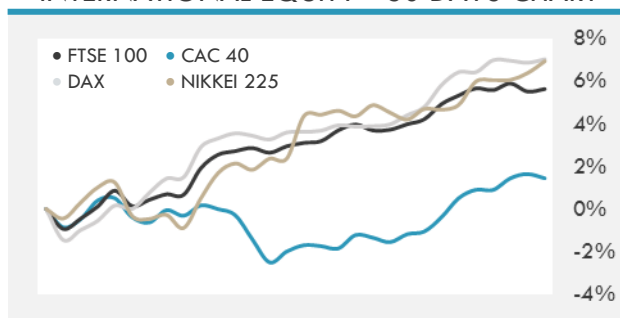
Source: Bloomberg

INTERNATIONAL MARKETS INDICES

	Last Price	Daily %	YTD %	Δ10D Vol
World	1200	-0.09%	16.39%	-0.85%
Developed	2014.02	-0.11%	15.01%	-0.48%
Emerging	1103.12	0.03%	27.93%	-2.55%
Frontier	2890.51	-0.10%	19.53%	-2.34%
Europe	131.48	-0.41%	7.33%	1.53%
Latin America	2953.69	-1.54%	26.19%	0.53%
Asia Pacific	163.31	0.33%	20.93%	-0.48%

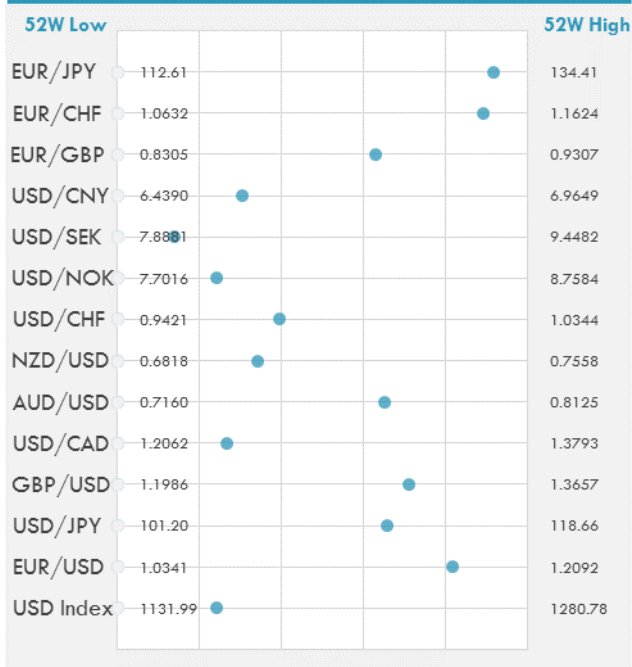
DEVELOPED VS EMERGING - 30 DAYS CHART

INTERNATIONAL EQUITY INDICES

	Last Price	Daily %	YTD %	Δ10D Vol
EuroStoxx 50	3603.32	-0.28%	9.51%	0.39%
FTSE 100	7522.87	0.20%	5.32%	-0.51%
CAC 40	5359.9	-0.36%	10.23%	0.33%
DAX	12955.94	-0.09%	12.85%	0.07%
Swiss SMI	9252.12	-0.11%	12.56%	0.14%
Nikkei 225	20799.57	0.53%	8.82%	-0.22%
CSI 300	3866.32	0.78%	16.80%	0.00%

INTERNATIONAL EQUITY - 30 DAYS CHART


FOREIGN EXCHANGE MARKET

	Last Price	Daily %	Δ10D	Vol 25	ΔRR
Major USD Cross Rate					
USD Index	1167.77	-0.23%	-0.57%	-	
EUR/USD	1.177	0.34%	-0.24%	0.285	
USD/JPY	112.66	0.01%	-1.17%	-1.000	
GBP/USD	1.3173	0.82%	0.21%	-0.525	
USD/CAD	1.2521	-0.06%	-1.75%	0.145	
AUD/USD	0.7788	0.27%	0.61%	-0.358	
NZD/USD	0.707	-0.32%	0.22%	-0.620	
USD/CHF	0.9785	-0.12%	-0.03%	-0.588	
USD/NOK	7.9565	-0.56%	-0.85%	0.158	
USD/SEK	8.1040	-0.18%	-0.23%	0.093	
USD/CNY	6.5991	-0.81%	0.58%	0.170	
Major EUR Cross Rate					
EUR/GBP	0.89349	-0.52%	0.10%	0.540	
EUR/CHF	1.15167	0.27%	-0.20%	-0.115	
EUR/JPY	132.6	0.33%	0.14%	-0.760	

DISTANCE FROM 52 WEEKS LOW/HIGH


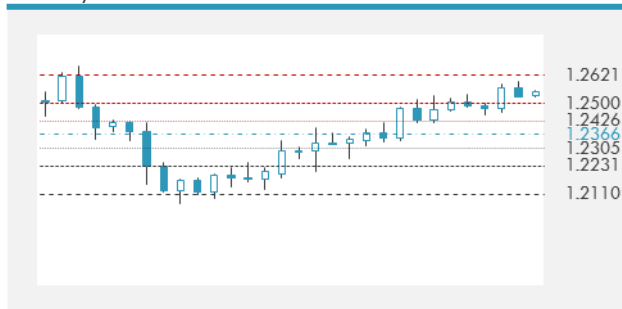
- The dollar slid for a third day as investors lightened exposure to the greenback after the People's Bank of China call to push ahead with financial reforms coincided with a stronger yuan fixing for the first time in seven trading days.
- EUR rises to a fresh high amid EUR/GBP jockeying after the release of a "white paper" on Brexit, which included options for ports and taxes on a no-deal scenario, while ECB Lautenschlaeger said that ECB should scale back QE by start of 2018.

Source: Bloomberg

EUR/USD 30 DAYS SUPPORT & RESISTANCE

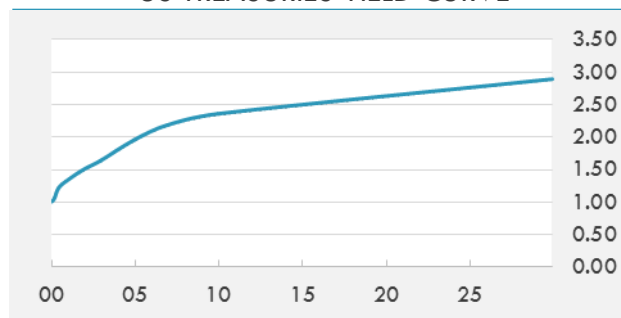
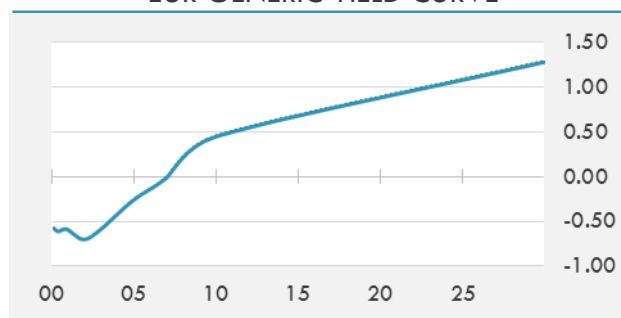
GBP/USD 30 DAYS SUPPORT & RESISTANCE

USD/JPY 30 DAYS SUPPORT & RESISTANCE

USD/CAD 30 DAYS SUPPORT & RESISTANCE


GLOBAL BOND INDICES

	Yield	ΔYield (in Bps)
Benchmark Indices		
US 10 Years Benchmark	2.3589	0.000
EU 10 Years Benchmark	0.444	-0.015
UK 10 Years Benchmark	1.363	-0.024
Sovereign Bonds		
US Treasury Bond	1.982	0
Eurozone Sovereign Bond	0.64	-0.018
U.K. Sovereign Bond	1.319	-0.008
Japan Sovereign Bond	0.129	-0.001
USD Emerging Sovereign Bond	4.409	-0.003
Corporate Bonds		
US Investment Grade Bond	3.178	-0.002
US High Yield Bond	5.491	-0.016
EUR Investment Grade Bond	0.649	-0.015
EUR High Yield Bond	1.947	-0.04
USD Emerging Market IG & HY	4.514	-0.002

US TREASURIES YIELD CURVE

EUR GENERIC YIELD CURVE


- Treasury futures underpinned within narrow range over U.S. morning session as dollar comes under pressure; recent theme of eurodollar steepener interest re-emerges.
- Spanish bonds climbed after a weekend of mass demonstrations in favor of Catalonia remaining a part of the country applied more pressure on the regional government to back away from unilaterally declaring independence.

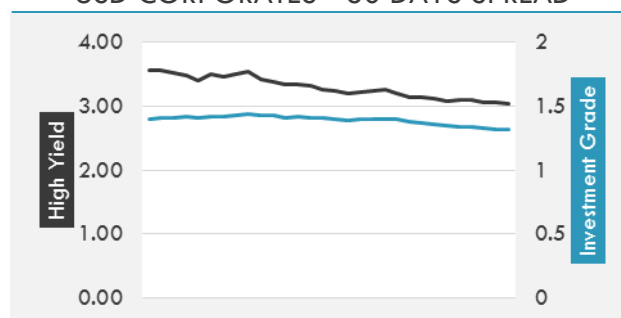
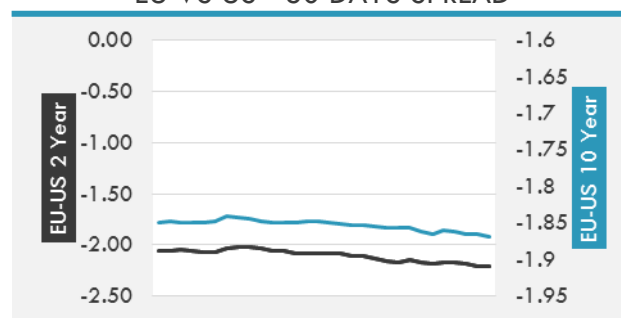
Source: Bloomberg

OVERNIGHT RATES - SWAPS

	Yield	ΔYield (in Bps)
3M USD LIBOR	1.35028	0.0000
3M EUR EURIBOR	-0.329	0.0000
3M GBP LIBOR	0.3435	0.0000
3Y USD SWAP	1.8915	0.0062
5Y USD SWAP	2.039	-0.0021
10Y USD SWAP	2.3173	0.0028
30Y USD SWAP	2.5687	-0.0025

FIXED INCOME SPREADS

	Spread	ΔSpread (in Bps)
USD 3M vs 10Y Spread	1.29033	-
USD 2Y vs 10Y Spread	0.85079	-
USD IG Spread	1.32	-
USD HY Spread	3.05	(0.0100)
EU vs US 10Y Spread	-1.9152	(0.0153)
EU vs US 2Y Spread	-2.2066	(0.0022)
EM vs Benchmark Spread	224	-

USD CORPORATES - 30 DAYS SPREAD

EU VS US - 30 DAYS SPREAD


GLOBAL COMMODITIES MARKET

	Last Price	Daily %
Commodity Index	83.93	-0.78%

Energy

WTI Crude Future	49.29	-2.95%
Brent Crude Future	55.62	-2.42%
NYMEX Gasoline	155.88	-3.26%
NYMEX Heat Oil	174.39	-2.37%
ICE Gasoil	515.75	-3.69%
NYMEX Natural Gas	2.863	-2.05%

Precious Metals

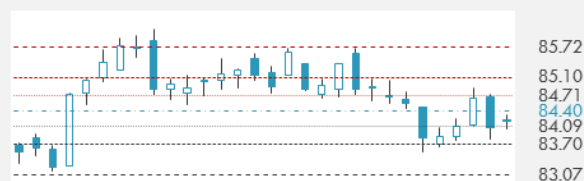
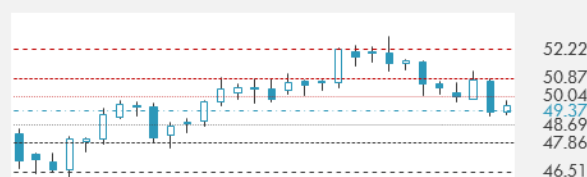
Gold Spot \$/Oz	1276.68	0.67%
Silver Spot \$/Oz	16.8368	1.45%
Platinum Spot \$/Oz	916.2	0.10%
Palladium Spot \$/Oz	923.31	-2.07%
Gold Future	1274.9	0.13%
Silver Future	16.79	0.91%
Platinum Future	916.7	-0.14%
Palladium Future	919	-1.87%

Base Metals

LME Aluminum	2153	-0.85%
LME Copper	6667	-0.50%
LME Zinc	3235	-1.61%
LME Nickel	10600	0.62%
LME Lead	2533	-2.28%
LME Tin	20550	-1.91%

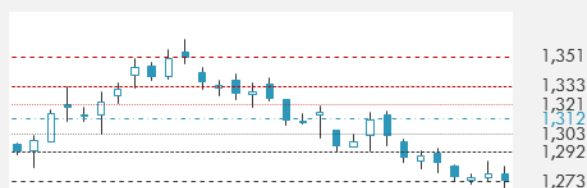
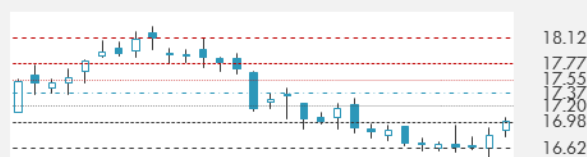
Agricultural

Corn CBT	350	0.14%
Wheat CBT	443.5	0.62%
Soybeans CBT	972.25	0.41%
Bean Meal CBT	319.2	0.73%
Rough Rice CBT	11.885	-0.25%
MDE Palm Oil	2730	0.37%
Soybean CBT	32.95	-0.15%
Coffee ICE	130	2.20%
Sugar #11 ICE	13.98	-2.85%
Cotton #2 ICE	68.84	0.83%
Cocoa ICE	2085	0.05%
Ethanol CME	1.42	-1.25%
Lumber CME	412.1	0.78%
Orange Juice ICE	157.15	-1.29%
Live Cattle CME	116.925	0.75%
Feeder Cattle CME	155.75	0.58%
Lean Hogs CME	60.925	-2.99%

COMMODITY INDEX SUPPORT & RESISTANCE

WTI OIL 30 DAYS SUPPORT & RESISTANCE


- Oil held gains near \$50 a barrel before U.S. government data forecast to show crude inventories extended declines for a third week.
- Gold climbs for third day as investors await Wednesday's release of minutes from most recent Federal Reserve meeting

Source: Bloomberg

GOLD 30 DAYS SUPPORT & RESISTANCE

SILVER 30 DAYS SUPPORT & RESISTANCE


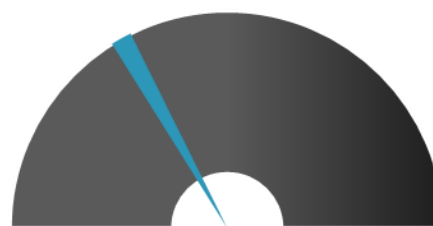
TOP 10 WINNERS

	Ticker	Last Price	Daily %
S&P 500 Stocks			
MICRON TECH	MU	40.96	3.25
NVIDIA CORP	NVDA	185.39	2.26
H&R BLOCK INC	HRB	25.36	2.01
WAL-MART STORES	WMT	80.53	1.94
PHILIP MORRIS IN	PM	113.37	1.89
ADV MICRO DEVICE	AMD	13.47	1.81
ALTRIA GROUP INC	MO	63.57	1.63
APACHE CORP	APA	45.85	1.51
CITRIX SYSTEMS	CTXS	80.62	1.45
KLA-TENCOR CORP	KLAC	103.95	1.44

TOP 10 LOSERS

	Ticker	Last Price	Daily %
S&P 500 Stocks			
DAVITA INC	DVA	53.89	-9.91
VIACOM INC-B	VIAB	25.42	-6.37
EXPRESS SCRIPTS	ESRX	59.22	-5.04
GENERAL ELECTRIC	GE	23.43	-3.94
JUNIPER NETWORKS	JNPR	27.32	-3.90
SYMANTEC CORP	SYMC	32.63	-3.80
ENVISION HEALTHC	EVHC	42.93	-3.61
MEDTRONIC PLC	MDT	76.93	-3.61
CVS HEALTH CORP	CVS	74.3	-3.41
ADVANCE AUTO PAR	AAP	91.12	-3.36

S&P 500 DISTRIBUTION

WINNERS
LOSERS
S&P VOLATILITY INDEX

LOW VOLATILITY
HIGH VOLATILITY

- Rejecting a plan put forward by Lockheed Martin and partners including Northrop Grumman and BAE Systems, the Pentagon is taking over cost-cutting efforts on the mammoth F-35 combat jet program. Cost for each jet has fallen in recent sales as part of 2014's "Blueprint for Affordability," spearheaded by contractors and incorporating a \$170M investment that the partners said saved \$230M so far and eventually could save \$4B.
- A defensive move out of Bentonville, Arkansas could rattle the growing smart speaker market. Wal-Mart is offering a \$25 discount to users who purchase a Google Home product and link their online Wal-Mart account to Google Express.
- The U.S. Navy awards Lockheed Martin and Fincantieri Marinette Marine a contract to build an additional littoral combat ship
- Wells Fargo thinks McDonald's will unveil a new national value menu platform during the early part of 2018 in a move that could disrupt the fast-food sector. The menu is expected to have organized product introductions at the \$1, \$2 and \$3 price points.
- Microsoft announces a 15-year power purchase agreement with General Electric for wind energy in Ireland to support Microsoft Cloud services. Microsoft will purchase 100% of the wind energy from GE's 32-megawatt wind farm in County Kerry, Ireland. GE and Microsoft will also use the project to collect energy storage data.
- Google has uncovered evidence that Russian operatives used its platforms to interfere with the 2016 election, according to The Washington Post sources. The disinformation campaign hit YouTube, Google's DoubleClick ad network, and Gmail.

KEY ECONOMIC INDICATORS

Country	Event	Surv(M)	Actual	Prior	Time
Canada	Housing Starts	212.0k	--	223.2k	15:15
Canada	Building Permits MoM	-1.00%	--	-3.50%	15:30
China	Money Supply M2 YoY	8.90%	--	8.90%	
China	New Yuan Loans CNY	1200.0b	--	1090.0b	
France	Industrial Production MoM	0.40%	--	0.50%	9:45
France	Industrial Production YoY	1.50%	--	3.70%	9:45
France	Manufacturing Production MoM	--	--	0.30%	9:45
Italy	Industrial Production MoM	0.10%	--	0.10%	11:00
Italy	Industrial Production WDA YoY	2.90%	--	4.40%	11:00
Japan	BoP Current Account Balance	¥2223.3b	¥2380.4b	¥2320.0b	2:50
Japan	Trade Balance BoP Basis	¥264.3b	¥318.7b	¥566.6b	2:50
Japan	BOJ Kuroda speaks				3:30
Russia	Current Account Balance	-2800m	--	2780m	16:00
United Kingdom	Industrial Production MoM	0.20%	--	0.20%	11:30
United Kingdom	Manufacturing Production MoM	0.20%	--	0.50%	11:30
United Kingdom	Trade Balance	-£2800	--	-£2872	11:30
United Kingdom	Industrial Production YoY	0.90%	--	0.40%	11:30
United Kingdom	Visible Trade Balance GBP/Mn	-£11150	--	-£11576	11:30
United Kingdom	Trade Balance Non EU GBP/Mn	-£3600	--	-£3842	11:30
United States	NFIB Small Business Optimism	105	--	105.3	13:00

Source: Bloomberg

Banque BEMO sal

Head Office - Private and Corporate Banking

 96 Pasteur Building, Pasteur Street, Medawar Area, P.O. Box: 16-6353, Beirut - Lebanon
 Tel: + 961 1 568 250 Fax: + 961 1 568 266

Wealth & Investment Management research@bemobank.com

 Beirut Central District Riad El Solh Square, Esseily Building Bloc A, 7th Floor Beirut - Lebanon
 Tel: + 961 1 992 600 Fax: + 961 1 983 368
www.bemobank.com

Disclaimer:

This report is published for information purposes only. The information herein has been compiled from, or based upon sources considered to be reliable (Bloomberg, SeekingAlpha, DailyStar...), but we do not guarantee or assume responsibility for its completeness and accuracy. This document should not be construed as a solicitation to take part in any investment, or as constituting any representation or warranty on our part. This report is not to be relied upon in substitution for the exercise of specialists.

We may not have taken any steps to ensure that the securities referred to in this report are suitable for any particular investor. The investments and services contained or referred to herein are not purported to be exhaustive, any person considering an investment should seek specialist advice on the suitability of an investment.

Nothing in this report constitutes investment, legal, accounting or tax advice, or a representation that any investment or strategy is suitable or appropriate to your individual circumstances, or otherwise constitutes a personal recommendation. Clients understand that it is their responsibility to seek legal and/or tax advice regarding the legal and tax consequences of their investment transactions. The consequences of any action taken on the basis of information contained herein are solely the responsibility of the recipient.

Investment instruments are subject to risk, including possible loss of principal amount invested. Past performance should not be taken as an indication or guarantee of future performance, and no representation or warranty, express or implied, is made regarding future performance. The value of securities and financial instruments is subject to exchange rate fluctuation that may have a positive or adverse effect on the price or income of such securities or financial instruments. Some investments mentioned in this report may have a high level of volatility. High volatility investments may experience sudden and large falls in their value causing losses when that investment is realized. Some investments may not be readily realizable and it may be difficult to sell or realize those investments, similarly it may prove difficult to obtain reliable information about the value, or risks, to which such an investment is exposed.

This report may provide the addresses of websites or references. We have not reviewed any such site and takes no responsibility for the content contained therein. Such address or reference is provided solely for convenience and information. Accessing such website through this report shall be at the recipients own risk.