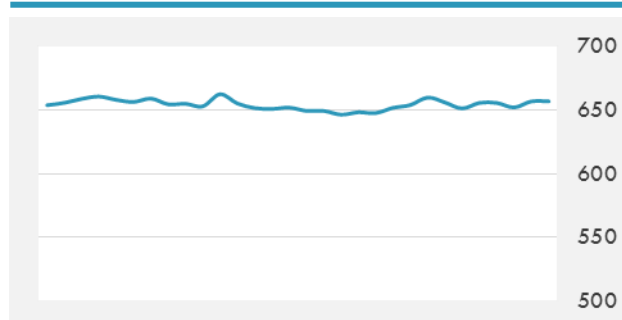
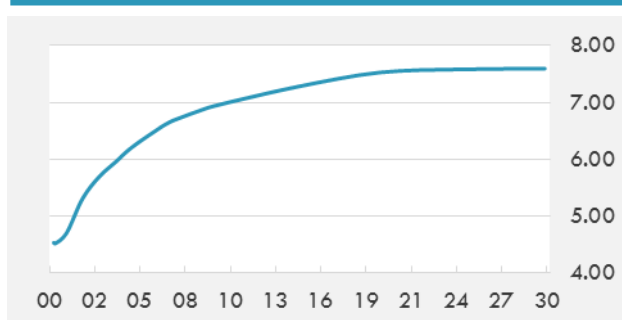


BEIRUT STOCK EXCHANGE

	Last	Daily %	YTD %	Dividend %
MSCI Lebanon	656.93	0.73%	-7.94%	
Development and Reconstruction				
Solidere A	8.01	1.14%	-22.83%	
Solidere B	8.07	1.64%	-23.14%	
Banking				
Audi Listed	5.85	0.52%	-13.97%	8.52%
BLC Listed	0.93	0.00%	-6.06%	
BOB Listed	18.8	0.00%	0.00%	3.52%
Byblos Listed	1.61	0.00%	-5.29%	8.22%
BEMO Listed	1.3	0.00%	-23.53%	4.07%
BLOM Listed	11.65	0.43%	9.91%	8.50%
Trading				
RYMCO	3.25	0.00%	0.00%	
Industrial				
Holcim	13.76	0.00%	17.11%	17.35%
Ciments Blancs	1.82	0.00%	15.92%	

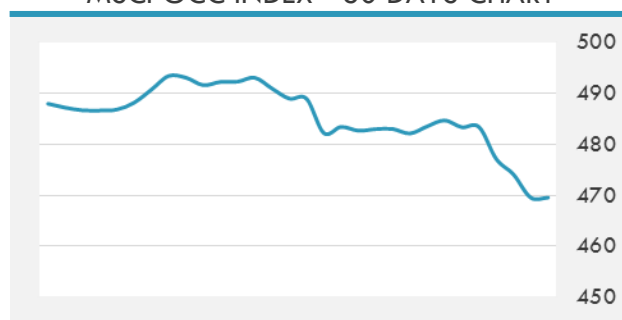
MSCI LEBANON INDEX - 30 DAYS CHART

LEBANESE USD SOVEREIGN CURVE


- Minister of Finance Mohammed Al-Jadaan said that the Kingdom is in the midst of an unprecedented economic transformation thanks to the Vision 2030.
- Standard & Poor's has forecast Abu Dhabi GDP to rise to Dh850 billion (\$231.3 billion) and Dh890 billion (\$242 billion) at current prices in 2017 and 2018 respectively, attributing the growth to the momentum witnessed by the oil and non-oil sectors since the beginning of this year.

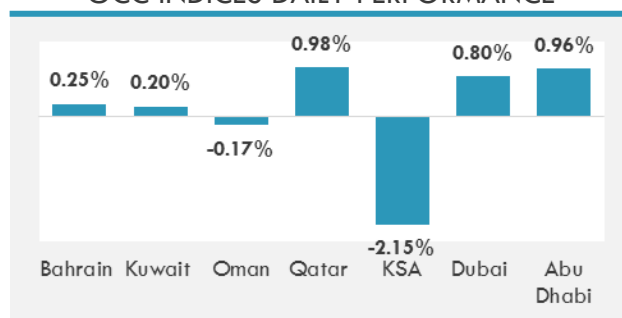
Source: Daily Star, Gulf Base

GCC EQUITY INDICES

	Last Price	Daily %	YTD %
Bahrain	1274.9	0.25%	4.46%
Kuwait	6626.12	0.20%	15.20%
Oman	5121.71	-0.17%	-11.43%
Qatar	8333.84	0.98%	-20.15%
KSA	6889.98	-2.15%	-4.44%
Dubai	3637.55	0.80%	3.21%
Abu Dhabi	4514.99	0.96%	-0.70%

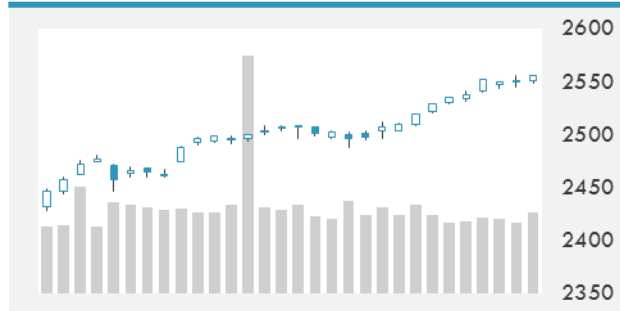
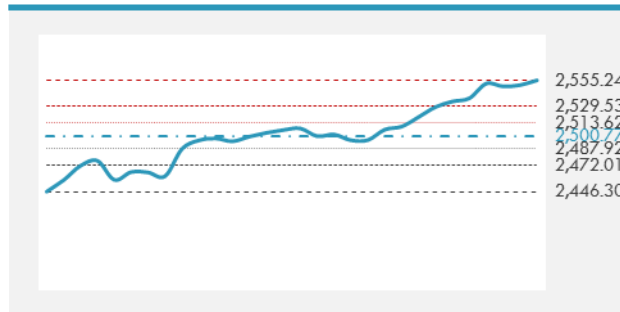
MSCI GCC INDEX - 30 DAYS CHART

LOCAL/GCC FOREIGN EXCHANGE

	Cross	Last Price
Lebanese Pound Spot	USD/LBP	1510.5
Bahraini Dinar Spot	USD/BHD	0.37727
Kuwaiti Dinar Spot	USD/KWD	0.30196
Omani Rial Spot	USD/OMR	0.385
Qatari Riyal Spot	USD/QAR	3.6858
Saudi Riyal Spot	USD/SAR	3.7503
UAE Dirham Spot	USD/AED	3.673

GCC INDICES DAILY PERFORMANCE


UNITED STATES EQUITY MARKET INDICES

	Last Price	Daily %	YTD %	Δ10D Vol
Major Indices				
Dow Jones	22872.89	0.18%	15.74%	0.00%
S&P 500	2555.24	0.18%	14.13%	-0.02%
Nasdaq	6603.548	0.25%	22.67%	-0.19%
Sectors Indices				
Discretionary	727.53	0.07%	12.30%	-0.14%
Staples	559.09	0.24%	5.13%	0.07%
Energy	506.78	0.24%	-8.61%	0.10%
Financials	436.81	-0.14%	13.01%	0.29%
Healthcare	957.54	0.24%	20.16%	0.00%
Industrials	610.45	-0.04%	13.45%	-0.07%
IT	1041.21	0.47%	28.87%	-0.01%
Materials	363.18	0.06%	16.34%	-0.39%
Telecom	159.86	-0.67%	-9.49%	0.24%
Utilities	275.21	0.47%	11.50%	0.10%
Real Estate	201.93	0.54%	6.15%	-0.16%

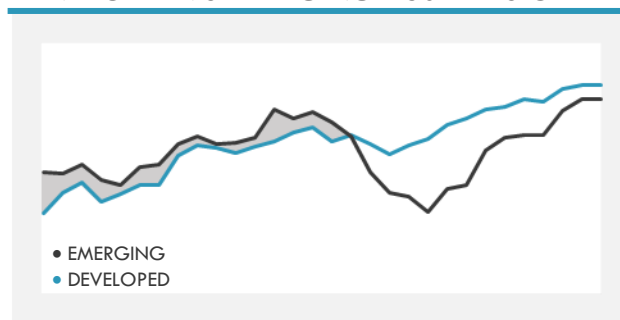
S&P 500 INDEX - 30 DAYS CHART

S&P 500 SUPPORT & RESISTANCE


- Asia stocks advanced for a fifth day, sending the regional benchmark to a fresh 10-year high, after minutes of the latest U.S. Federal Reserve meeting boosted optimism that rate increases in the world's biggest economy will remain gradual.
- A relief rally in Spain failed to lift European equities, which ended the session little changed for a second consecutive day.

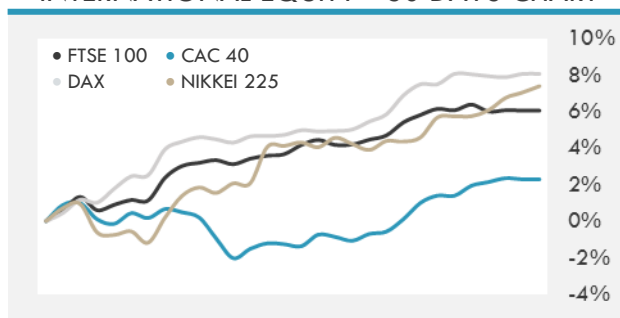
Source: Bloomberg

INTERNATIONAL MARKETS INDICES

	Last Price	Daily %	YTD %	Δ10D Vol
World	1207.31	0.18%	17.10%	-0.03%
Developed	2024.54	0.15%	15.61%	0.00%
Emerging	1117.33	0.43%	29.58%	-1.67%
Frontier	2877.81	-0.09%	19.00%	0.02%
Europe	131.71	0.00%	7.52%	0.04%
Latin America	2956.03	-0.32%	26.29%	0.09%
Asia Pacific	165.04	0.14%	22.21%	-0.54%

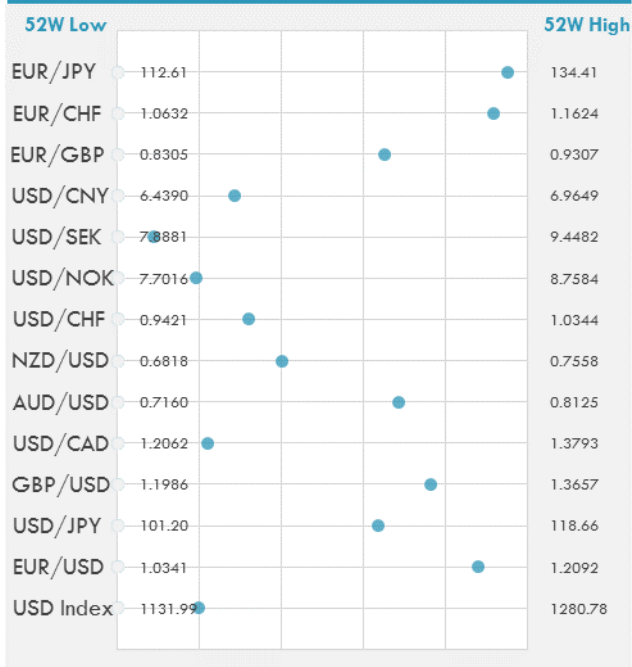
DEVELOPED VS EMERGING - 30 DAYS CHART

INTERNATIONAL EQUITY INDICES

	Last Price	Daily %	YTD %	Δ10D Vol
EuroStoxx 50	3607.39	0.24%	9.63%	0.00%
FTSE 100	7533.81	-0.06%	5.47%	0.31%
CAC 40	5362.41	-0.02%	10.29%	0.09%
DAX	12970.68	0.17%	12.97%	-0.01%
Swiss SMI	9265.34	-0.02%	12.72%	0.12%
Nikkei 225	20949.56	0.33%	9.60%	-1.00%
CSI 300	3902.46	-0.01%	17.90%	-0.11%

INTERNATIONAL EQUITY - 30 DAYS CHART


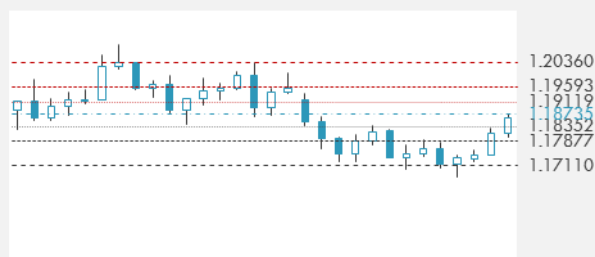
FOREIGN EXCHANGE MARKET

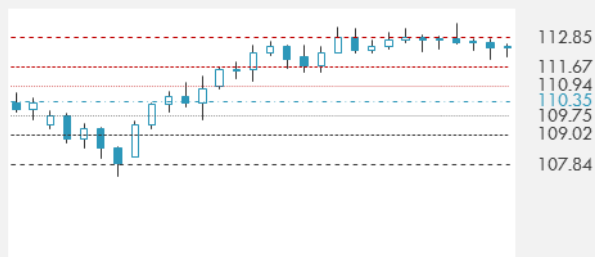
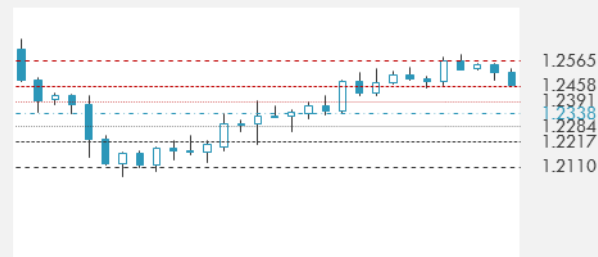
	Last Price	Daily %	Δ10D	Vol 25	ΔRR
Major USD Cross Rate					
USD Index	1161.43	-0.11%	0.05%	-	
EUR/USD	1.1877	0.15%	-0.06%	0.550	
USD/JPY	112.27	-0.20%	0.11%	-0.993	
GBP/USD	1.326	0.28%	0.27%	-0.430	
USD/CAD	1.2441	-0.14%	-0.30%	0.115	
AUD/USD	0.7822	0.44%	0.48%	-0.355	
NZD/USD	0.7114	0.47%	1.18%	-0.798	
USD/CHF	0.9716	-0.20%	0.00%	-0.683	
USD/NOK	7.9043	-0.22%	-0.27%	-0.030	
USD/SEK	8.0278	-0.26%	-0.76%	0.090	
USD/CNY	6.5881	-0.03%	0.00%	0.423	
Major EUR Cross Rate					
EUR/GBP	0.89572	-0.13%	-0.08%	0.568	
EUR/CHF	1.15392	-0.03%	0.11%	-0.113	
EUR/JPY	133.35	-0.04%	-0.30%	-0.718	

DISTANCE FROM 52 WEEKS LOW/HIGH


- The dollar fell to a one-week low after Federal Reserve minutes showed concern among officials over whether low inflation may persist.
- CAD holds to a tight range with prices constrained by large option expiries Thursday as the fourth round of NAFTA negotiations begins with early indications suggesting that the talks will be contentious.

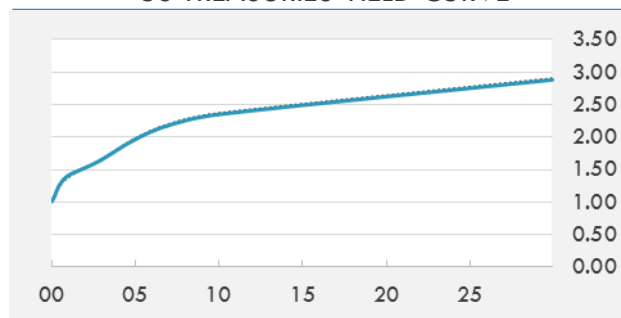
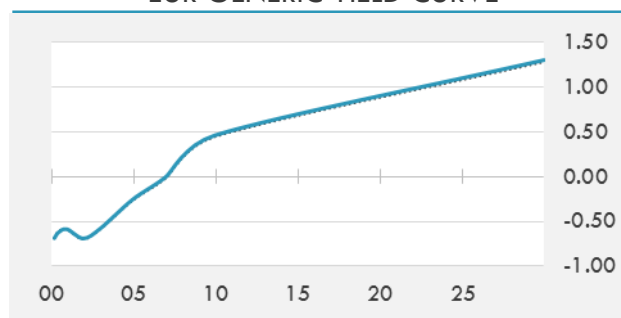
Source: Bloomberg

EUR/USD 30 DAYS SUPPORT & RESISTANCE

GBP/USD 30 DAYS SUPPORT & RESISTANCE

USD/JPY 30 DAYS SUPPORT & RESISTANCE

USD/CAD 30 DAYS SUPPORT & RESISTANCE


GLOBAL BOND INDICES

	Yield	ΔYield (in Bps)
Benchmark Indices		
US 10 Years Benchmark	2.3481	-0.013
EU 10 Years Benchmark	0.463	0.021
UK 10 Years Benchmark	1.38	0.017
Sovereign Bonds		
US Treasury Bond	1.972	0.008
Eurozone Sovereign Bond	0.645	0
U.K. Sovereign Bond	1.341	0.016
Japan Sovereign Bond	0.128	0.001
USD Emerging Sovereign Bond	4.4	-0.007
Corporate Bonds		
US Investment Grade Bond	3.162	0.004
US High Yield Bond	5.484	-0.008
EUR Investment Grade Bond	0.657	0.01
EUR High Yield Bond	1.938	0.027
USD Emerging Market IG & HY	4.507	-0.002

US TREASURIES YIELD CURVE

EUR GENERIC YIELD CURVE


- Treasuries bull flattened in similar price action to Tuesday, when morning gains held into the U.S. afternoon session; solid 10-year auction, September FOMC minutes ensured limited price-action into the close.
- Bund futures extend drop in late European session after large block trade, stopping just short of session lows; underperformance vs Treasuries drives U.S.-German 10Y spread to lowest level in a week.

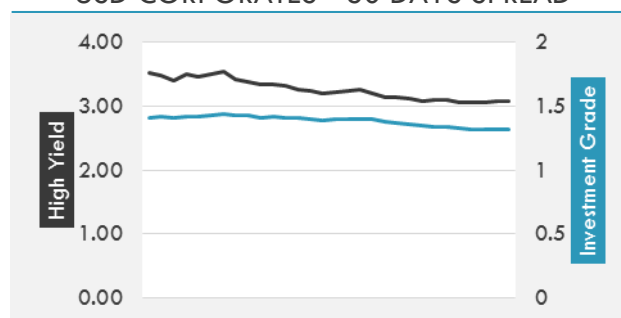
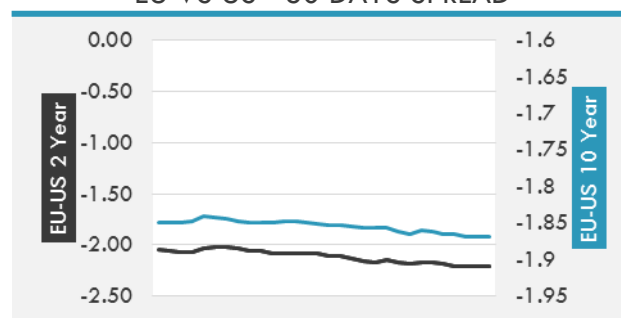
Source: Bloomberg

OVERNIGHT RATES - SWAPS

	Yield	ΔYield (in Bps)
3M USD LIBOR	1.35667	0.0000
3M EUR EURIBOR	-0.329	0.0000
3M GBP LIBOR	0.36275	0.0000
3Y USD SWAP	1.8898	0.0031
5Y USD SWAP	2.0301	-0.0114
10Y USD SWAP	2.3034	-0.0129
30Y USD SWAP	2.5593	-0.0112

FIXED INCOME SPREADS

	Spread	ΔSpread (in Bps)
USD 3M vs 10Y Spread	1.25524	(0.0229)
USD 2Y vs 10Y Spread	0.82552	(0.0188)
USD IG Spread	1.32	-
USD HY Spread	3.09	0.0300
EU vs US 10Y Spread	-1.9188	-
EU vs US 2Y Spread	-2.2066	-
EM vs Benchmark Spread	223.7	(0.800)

USD CORPORATES - 30 DAYS SPREAD

EU VS US - 30 DAYS SPREAD


GLOBAL COMMODITIES MARKET

	Last Price	Daily %
Commodity Index	84.77	-0.06%

Energy

WTI Crude Future	51.3	0.75%
Brent Crude Future	56.94	0.58%
NYMEX Gasoline	160.92	1.11%
NYMEX Heat Oil	178.61	1.20%
ICE Gasoil	524	-0.38%
NYMEX Natural Gas	2.889	-0.07%

Precious Metals

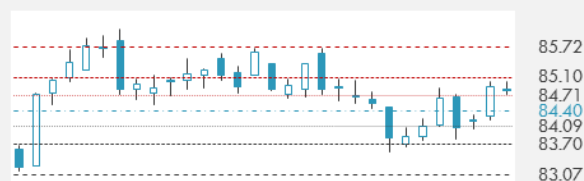
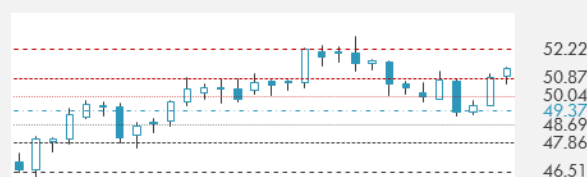
Gold Spot \$/Oz	1291.72	0.29%
Silver Spot \$/Oz	17.175	0.31%
Platinum Spot \$/Oz	932.35	0.04%
Palladium Spot \$/Oz	962.55	2.79%
Gold Future	1288.9	-0.38%
Silver Future	17.133	-0.43%
Platinum Future	933.2	-0.35%
Palladium Future	958.95	2.71%

Base Metals

LME Aluminum	2130	-1.53%
LME Copper	6800	0.59%
LME Zinc	3219	-1.83%
LME Nickel	11135	0.72%
LME Lead	2565	0.31%
LME Tin	20870	0.70%

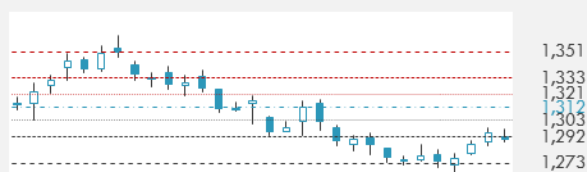
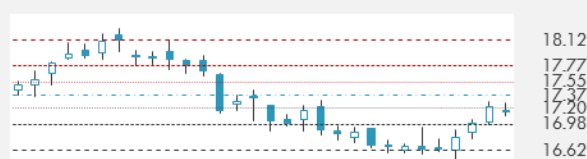
Agricultural

Corn CBT	346	-0.93%
Wheat CBT	433.25	-0.46%
Soybeans CBT	965.25	-0.08%
Bean Meal CBT	314.9	-0.41%
Rough Rice CBT	12.035	0.12%
MDE Palm Oil	2696	0.07%
Soybean CBT	33.15	0.12%
Coffee ICE	126.8	-3.21%
Sugar #11 ICE	14.3	0.92%
Cotton #2 ICE	68.73	-0.32%
Cocoa ICE	2097	2.54%
Ethanol CME	1.425	0.35%
Lumber CME	409.2	0.47%
Orange Juice ICE	162.6	0.84%
Live Cattle CME	118.525	-0.23%
Feeder Cattle CME	155.675	-0.30%
Lean Hogs CME	62.5	1.54%

COMMODITY INDEX SUPPORT & RESISTANCE

WTI OIL 30 DAYS SUPPORT & RESISTANCE


- Oil halted three days of gains near \$51 a barrel as investors wait to see if rising U.S. crude inventories signaled in industry data will also be shown by government figures.
- Libya said it's struggling to restore oil production.

Source: Bloomberg

GOLD 30 DAYS SUPPORT & RESISTANCE

SILVER 30 DAYS SUPPORT & RESISTANCE


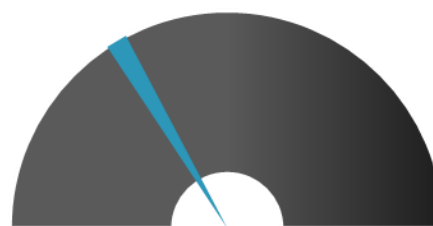
TOP 10 WINNERS

	Ticker	Last Price	Daily %
S&P 500 Stocks			
NUCOR CORP	NUE	57.34	3.56
TARGET CORP	TGT	59.15	2.69
PAYPAL HOLDINGS	PYPL	67.78	2.63
FLIR SYSTEMS	FLIR	42.58	2.58
COLGATE-PALMOLIV	CL	74.73	2.51
DOLLAR TREE INC	DLTR	91.23	2.16
JOHNSON&JOHNSON	JNJ	136.65	2.05
ALIGN TECHNOLOGY	ALGN	192.46	2.01
DOLLAR GENERAL C	DG	82.54	1.98
SBA COMM CORP	SBAC	151.35	1.97

TOP 10 LOSERS

	Ticker	Last Price	Daily %
S&P 500 Stocks			
NAVIENT CORP	NAVI	11.79	-5.45
ROBERT HALF INTL	RHI	48.74	-5.12
SIGNET JEWELERS	SIG	64.09	-3.55
BEST BUY CO INC	BBY	55.47	-2.97
COACH INC	COH	38.87	-2.83
INCYTE CORP	INCY	111.62	-2.74
EQUIFAX INC	EFX	110.5	-2.68
ADVANCE AUTO PAR	AAP	89.4	-2.66
CSRA INC	CSRA	31.03	-2.61
DISCOVERY COMM-A	DISCA	20	-2.58

S&P 500 DISTRIBUTION

WINNERS
LOSERS
S&P VOLATILITY INDEX

LOW VOLATILITY
HIGH VOLATILITY

- China is closing in on its first dollar bond sale in 13 years, in an environment where sovereign bond yields are at multi-year lows.
- Volkswagen says it will keep Skoda production in the Czech Republic and may even add jobs to meet demand.
- General Motors says deliveries in China jumped 6.6% in September to 366,305 vehicles as Buick, Cadillac and Baojun all hit record highs for the month.
- GE's Baker Hughes recently held takeover talks with energy services company Subsea 7, WSJ reports.
- BMW is looking at forming a joint venture partnership with Great Wall Motor Company that could include an assembly plant in the eastern Chinese city of Changsu, according to Automotive News.
- Speaking to Bloomberg, Chicago Fed President Charles Evans says the inflation data - be it the actual inflation numbers, or surveys of expectations - are too low, and he's not expecting the price gauge to hit 2% as quickly as many of his colleagues.
- Amazon announces the Kindle Oasis, a waterproof tablet with a larger screen that can handle audio books thanks to Audible integration.
- Taiwan fines Qualcomm a record \$773M for antitrust violations.
- Alibaba launches a \$15B drive to build overseas research hubs.
- Amazon announces a new login option that allows teenagers to shop independently through a parent's account.

KEY ECONOMIC INDICATORS

Country	Event	Surv(M)	Actual	Prior	Time
Canada	New Housing Price Index MoM	0.20%	--	0.40%	15:30
China	Money Supply M2 YoY	8.90%	--	8.90%	
China	New Yuan Loans CNY	1200.0b	--	1090.0b	
Eurozone	Industrial Production SA MoM	0.60%	--	0.10%	12:00
Eurozone	Industrial Production WDA YoY	2.60%	--	3.20%	12:00
France	CPI YoY	1.00%	--	1.00%	9:45
France	CPI EU Harmonized YoY	1.10%	--	1.10%	9:45
France	CPI MoM	-0.10%	--	-0.10%	9:45
France	CPI EU Harmonized MoM	-0.10%	--	-0.10%	9:45
Japan	PPI YoY	3.00%	3.00%	2.90%	2:50
Japan	Tertiary Industry Index MoM	0.10%	-0.20%	0.10%	7:30
Russia	Trade Balance	5.0b	--	4.0b	16:00
United States	Initial Jobless Claims	250k	--	260k	15:30
United States	DOE U.S. Crude Oil Inventories	-2400k	--	-6023k	18:00
United States	PPI Final Demand MoM	0.40%	--	0.20%	15:30
United States	Monthly Budget Statement	\$6.0b	--	\$33.4b	
United States	PPI Final Demand YoY	2.60%	--	2.40%	15:30
United States	PPI Ex Food and Energy MoM	0.20%	--	0.10%	15:30
United States	Continuing Claims	1930k	--	1938k	15:30
United States	PPI Ex Food and Energy YoY	2.00%	--	2.00%	15:30

Source: Bloomberg

Banque BEMO sal
Head Office - Private and Corporate Banking

 96 Pasteur Building, Pasteur Street, Medawar Area, P.O. Box: 16-6353, Beirut - Lebanon
 Tel: + 961 1 568 250 Fax: + 961 1 568 266

Wealth & Investment Management research@bemobank.com

 Beirut Central District Riad El Solh Square, Esseily Building Bloc A, 7th Floor Beirut - Lebanon
 Tel: + 961 1 992 600 Fax: + 961 1 983 368
www.bemobank.com
Disclaimer:

This report is published for information purposes only. The information herein has been compiled from, or based upon sources considered to be reliable (Bloomberg, SeekingAlpha, DailyStar...), but we do not guarantee or assume responsibility for its completeness and accuracy. This document should not be construed as a solicitation to take part in any investment, or as constituting any representation or warranty on our part. This report is not to be relied upon in substitution for the exercise of specialists.

We may not have taken any steps to ensure that the securities referred to in this report are suitable for any particular investor. The investments and services contained or referred to herein are not purported to be exhaustive, any person considering an investment should seek specialist advice on the suitability of an investment.

Nothing in this report constitutes investment, legal, accounting or tax advice, or a representation that any investment or strategy is suitable or appropriate to your individual circumstances, or otherwise constitutes a personal recommendation. Clients understand that it is their responsibility to seek legal and/or tax advice regarding the legal and tax consequences of their investment transactions. The consequences of any action taken on the basis of information contained herein are solely the responsibility of the recipient.

Investment instruments are subject to risk, including possible loss of principal amount invested. Past performance should not be taken as an indication or guarantee of future performance, and no representation or warranty, express or implied, is made regarding future performance. The value of securities and financial instruments is subject to exchange rate fluctuation that may have a positive or adverse effect on the price or income of such securities or financial instruments. Some investments mentioned in this report may have a high level of volatility. High volatility investments may experience sudden and large falls in their value causing losses when that investment is realized. Some investments may not be readily realizable and it may be difficult to sell or realize those investments, similarly it may prove difficult to obtain reliable information about the value, or risks, to which such an investment is exposed.

This report may provide the addresses of websites or references. We have not reviewed any such site and takes no responsibility for the content contained therein. Such address or reference is provided solely for convenience and information. Accessing such website through this report shall be at the recipients own risk.