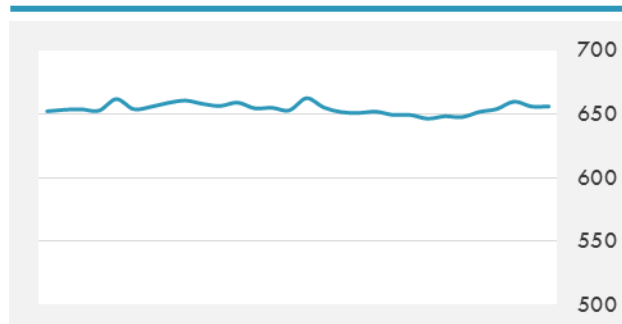
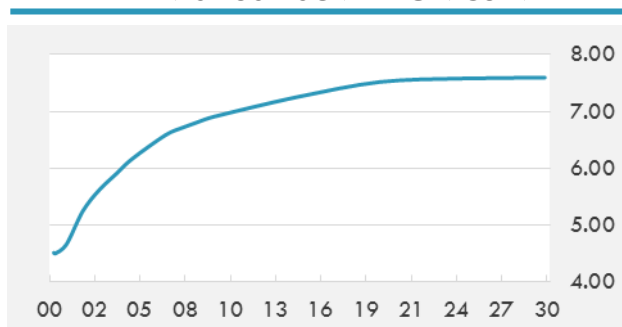


BEIRUT STOCK EXCHANGE

	Last	Daily %	YTD %	Dividend %
Development and Reconstruction				
Solidere A	8.05	-1.11%	-22.45%	0.00%
Solidere B	7.98	-2.33%	-24.00%	0.00%
Solidere GDR	7.6	0.00%	-24.00%	0.00%
Banking				
Audi Listed	5.85	-0.85%	-13.97%	8.52%
BLC Listed	0.93	0.00%	-6.06%	0.00%
BOB Listed	18.8	0.00%	0.00%	3.52%
Byblos Listed	1.61	0.00%	-5.29%	8.22%
BEMO Listed	1.55	0.00%	-8.82%	3.44%
BLOM Listed	11.61	0.09%	9.53%	8.53%
Trading				
RYMCO	3.25	0.00%	0.00%	0.00%
Industrial				
Holcim	13.01	0.00%	10.72%	18.35%
Ciments Blancs	1.82	0.00%	15.92%	0.00%

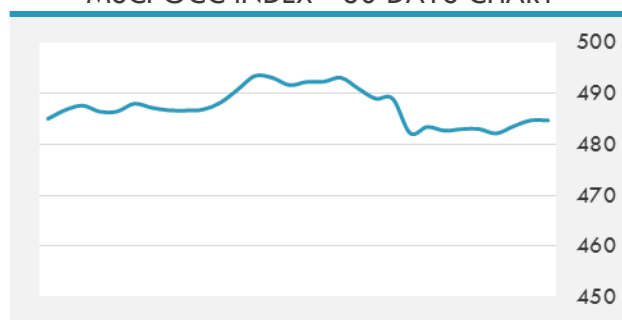
MSCI LEBANON INDEX - 30 DAYS CHART

LEBANESE USD SOVEREIGN CURVE


- Citi Research warned Wednesday that Lebanon cannot keep counting on more financial engineering by Banque du Liban alone to create a sustainable source of bank and government financing.
- Saudi King Salman bin Abdulaziz is beginning an historic first visit to Russia by a monarch of the Gulf kingdom as he seeks an understanding with President Vladimir Putin to extend an agreement curbing oil supplies.

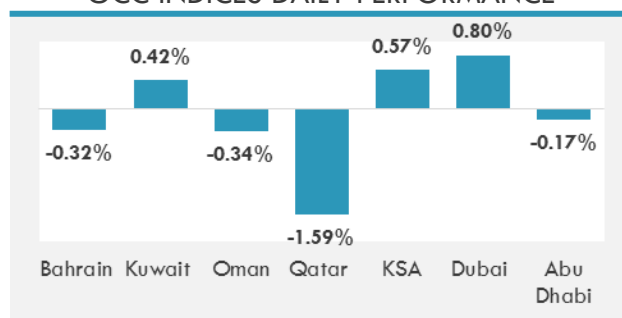
Source: Daily Star, Gulf Base

GCC EQUITY INDICES

	Last Price	Daily %	YTD %
Bahrain	1273.94	-0.32%	4.38%
Kuwait	6692.56	0.42%	16.43%
Oman	5207.73	-0.34%	-9.94%
Qatar	8152.98	-1.59%	-21.88%
KSA	7285.75	0.57%	1.04%
Dubai	3598.65	0.80%	1.92%
Abu Dhabi	4433.72	-0.17%	-2.48%

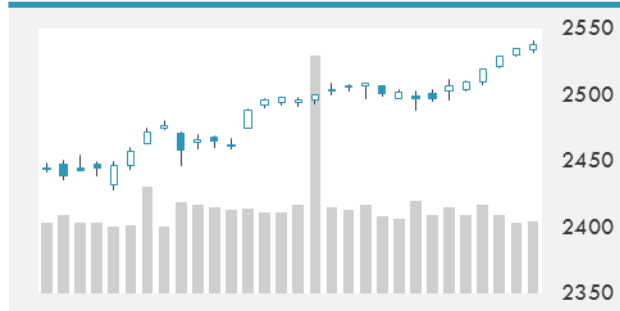
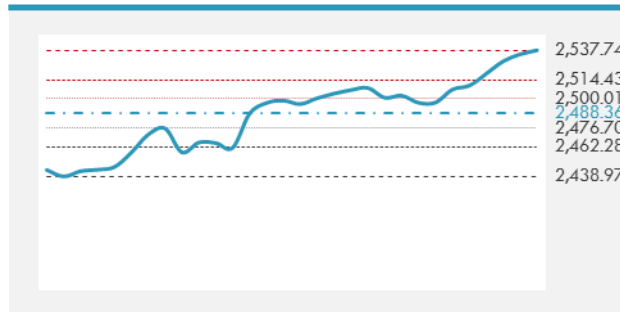
MSCI GCC INDEX - 30 DAYS CHART

LOCAL/GCC FOREIGN EXCHANGE

	Cross	Last Price
Lebanese Pound Spot	USD/LBP	1510.5
Bahraini Dinar Spot	USD/BHD	0.37722
Kuwaiti Dinar Spot	USD/KWD	0.30218
Omani Rial Spot	USD/OMR	0.385
Qatari Riyal Spot	USD/QAR	3.6659
Saudi Riyal Spot	USD/SAR	3.7503
UAE Dirham Spot	USD/AED	3.673

GCC INDICES DAILY PERFORMANCE


UNITED STATES EQUITY MARKET INDICES

	Last Price	Daily %	YTD %	Δ10D Vol
Major Indices				
Dow Jones	22661.64	0.09%	14.67%	-0.48%
S&P 500	2537.74	0.12%	13.35%	-0.86%
Nasdaq	6534.627	0.04%	21.39%	-0.79%
Sectors Indices				
Discretionary	725.17	0.53%	11.94%	-0.14%
Staples	556.82	0.37%	4.71%	-1.40%
Energy	505.89	-0.06%	-8.77%	-0.01%
Financials	432.79	-0.32%	11.97%	0.74%
Healthcare	959.8	0.45%	20.44%	-0.86%
Industrials	611.25	-0.06%	13.60%	0.17%
IT	1019.69	-0.15%	26.21%	-0.60%
Materials	361.53	-0.02%	15.82%	-0.28%
Telecom	164.07	0.05%	-7.10%	-1.50%
Utilities	271.39	1.06%	9.95%	1.94%
Real Estate	199.95	0.83%	5.11%	1.50%

S&P 500 INDEX - 30 DAYS CHART

S&P 500 SUPPORT & RESISTANCE


- U.S. equities added to records and the S&P 500 rose for a seventh day as gains in defensive stocks offset losses from tech and financial shares.
- European stocks ended a nine-day advance that pushed the regional benchmark index to the highest level in three months.
- Asian stocks were mixed after a four-day rally, with markets in Hong Kong, China and South Korea all closed for holidays.

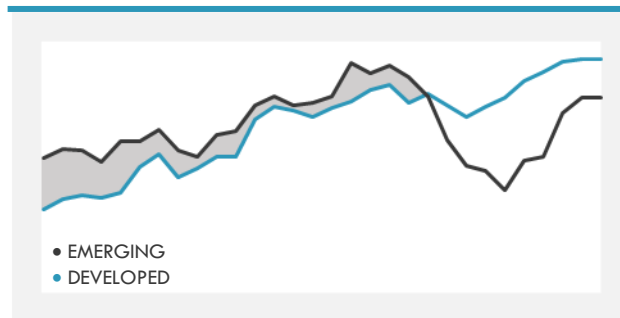
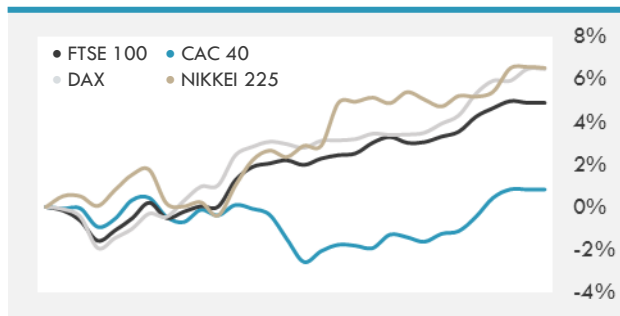
Source: Bloomberg

INTERNATIONAL MARKETS INDICES

	Last Price	Daily %	YTD %	Δ10D Vol
World	1198.22	0.11%	16.21%	-0.72%
Developed	2010.95	0.07%	14.83%	-0.95%
Emerging	1101.84	0.44%	27.78%	0.29%
Frontier	2888.11	0.20%	19.43%	0.02%
Europe	131.77	-0.08%	7.57%	0.56%
Latin America	2998.26	0.27%	28.10%	-0.41%
Asia Pacific	162.85	0.16%	20.59%	-0.85%

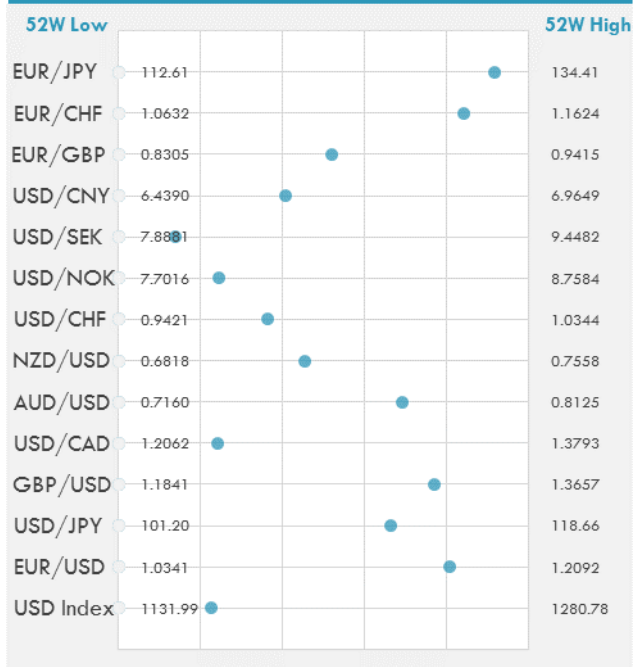
INTERNATIONAL EQUITY INDICES

	Last Price	Daily %	YTD %	Δ10D Vol
EuroStoxx 50	3594.91	-0.30%	9.25%	0.69%
FTSE 100	7467.58	-0.01%	4.55%	-0.19%
CAC 40	5363.23	-0.08%	10.30%	0.11%
DAX	12970.52	0.53%	12.97%	-0.09%
Swiss SMI	9283.97	0.00%	12.95%	-0.02%
Nikkei 225	20613.93	-0.06%	7.85%	0.02%
CSI 300	3836.5	0.00%	15.90%	0.00%

DEVELOPED VS EMERGING - 30 DAYS CHART

INTERNATIONAL EQUITY - 30 DAYS CHART


FOREIGN EXCHANGE MARKET

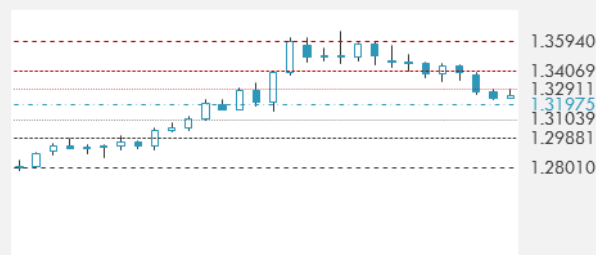
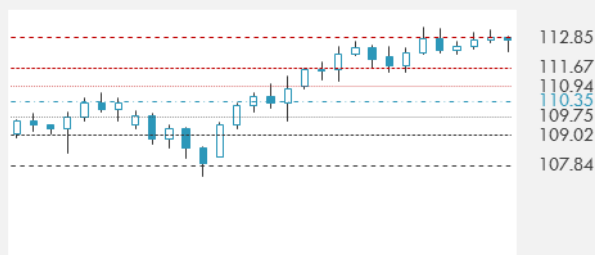
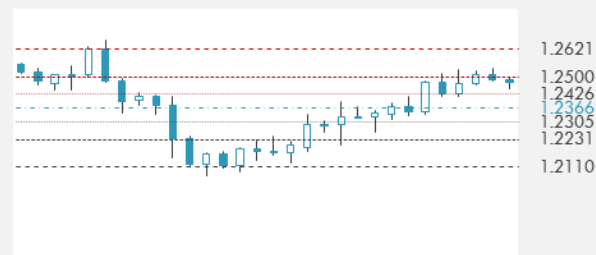
	Last Price	Daily %	Δ10D	Vol 25	ΔRR
Major USD Cross Rate					
USD Index	1165.17	0.09%	-0.38%	-	
EUR/USD	1.1754	-0.04%	-0.11%	0.260	
USD/JPY	112.73	-0.03%	-0.70%	-0.965	
GBP/USD	1.3238	-0.08%	-0.18%	0.058	
USD/CAD	1.2477	0.01%	0.03%	-0.068	
AUD/USD	0.783	-0.45%	-0.61%	-0.335	
NZD/USD	0.7156	-0.17%	-0.67%	-0.493	
USD/CHF	0.9756	0.03%	-0.12%	-0.508	
USD/NOK	7.9607	0.03%	-0.05%	0.158	
USD/SEK	8.1048	0.08%	0.01%	0.020	
USD/CNY	6.6528	0.00%	0.00%	0.238	
Major EUR Cross Rate					
EUR/GBP	0.88787	0.03%	-0.88%	-0.063	
EUR/CHF	1.14665	0.00%	0.03%	-0.130	
EUR/JPY	132.5	-0.08%	-0.11%	-0.678	

DISTANCE FROM 52 WEEKS LOW/HIGH


- The Bloomberg Dollar Spot Index fell for a second day and Treasuries rose as investors saw U.S. President Donald Trump's reported shortlist of Federal Reserve chair candidates as potentially dovish.
- The pound rose for the first time in four days before data on services, the largest sector of the U.K. economy, which will be closely eyed amid expectations that the Bank of England will raise interest-rates in November.

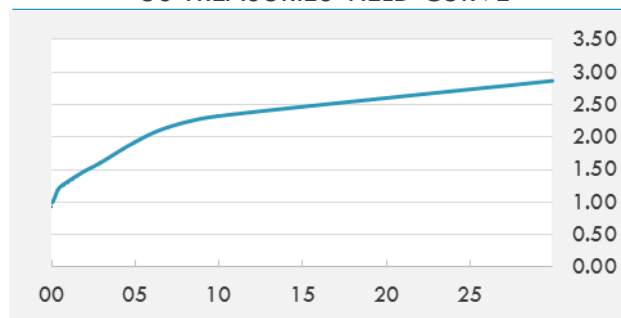
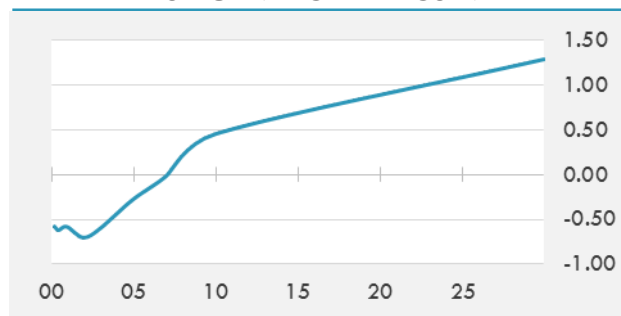
Source: Bloomberg

EUR/USD 30 DAYS SUPPORT & RESISTANCE

GBP/USD 30 DAYS SUPPORT & RESISTANCE

USD/JPY 30 DAYS SUPPORT & RESISTANCE

USD/CAD 30 DAYS SUPPORT & RESISTANCE


GLOBAL BOND INDICES

	Yield	ΔYield (in Bps)
Benchmark Indices		
US 10 Years Benchmark	2.3229	0.000
EU 10 Years Benchmark	0.453	-0.010
UK 10 Years Benchmark	1.378	0.025
Sovereign Bonds		
US Treasury Bond	1.947	0.003
Eurozone Sovereign Bond	0.663	0.011
U.K. Sovereign Bond	1.332	0.022
Japan Sovereign Bond	0.124	-0.02
USD Emerging Sovereign Bond	4.377	-0.009
Corporate Bonds		
US Investment Grade Bond	3.152	0
US High Yield Bond	5.499	-0.012
EUR Investment Grade Bond	0.655	-0.001
EUR High Yield Bond	2.022	0.017
USD Emerging Market IG & HY	4.495	-0.017

US TREASURIES YIELD CURVE

EUR GENERIC YIELD CURVE


- Treasuries fell Wednesday, reaching session lows during U.S. morning after September ISM Non-Manufacturing Composite rose more than forecast to a 12-year high; declines were later pared leaving yields higher by less than 1bp at 3pm ET and 5s30s marginally steeper, its third straight increase.
- Bund futures called to open little changed as Treasuries flatline in Asian hours with volumes in futures running ~40% of recent averages with news flow light and holidays across parts of the region.

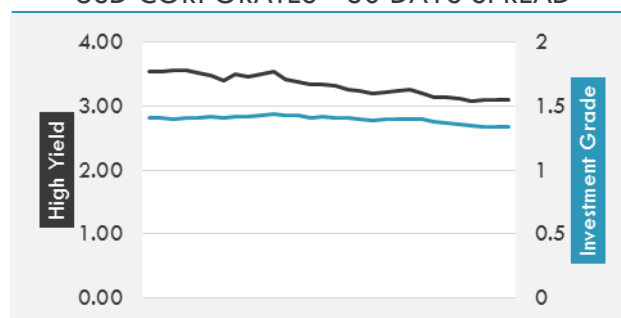
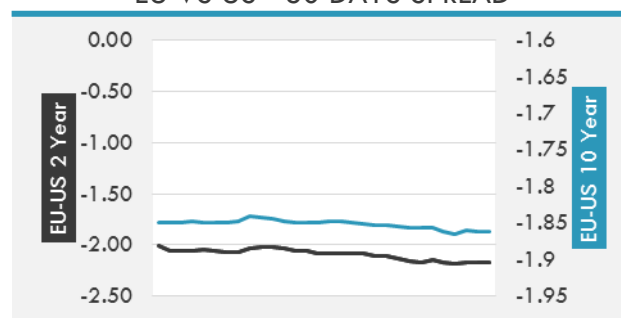
Source: Bloomberg

OVERNIGHT RATES - SWAPS

	Yield	ΔYield (in Bps)
3M USD LIBOR	1.3425	0.0000
3M EUR EURIBOR	-0.33	0.0000
3M GBP LIBOR	0.33563	0.0000
3Y USD SWAP	1.8495	0.0071
5Y USD SWAP	2.0055	0.0010
10Y USD SWAP	2.2825	0.0013
30Y USD SWAP	2.5441	0.0019

FIXED INCOME SPREADS

	Spread	ΔSpread (in Bps)
USD 3M vs 10Y Spread	1.25371	(0.0081)
USD 2Y vs 10Y Spread	0.84602	(0.0019)
USD IG Spread	1.34	-
USD HY Spread	3.11	-
EU vs US 10Y Spread	-1.87	(0.0097)
EU vs US 2Y Spread	-2.1756	(0.0009)
EM vs Benchmark Spread	226.3	(0.100)

USD CORPORATES - 30 DAYS SPREAD

EU VS US - 30 DAYS SPREAD


GLOBAL COMMODITIES MARKET

	Last Price	Daily %
Commodity Index	83.96	0.26%

Energy

WTI Crude Future	49.98	-0.87%
Brent Crude Future	55.8	-0.36%
NYMEX Gasoline	158.05	0.96%
NYMEX Heat Oil	177.39	1.34%
ICE Gasoil	518.25	0.48%
NYMEX Natural Gas	2.94	1.55%

Precious Metals

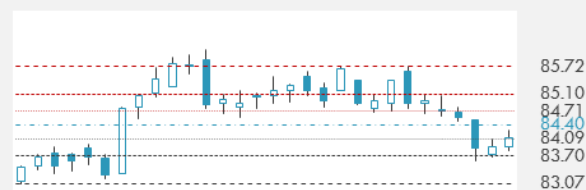
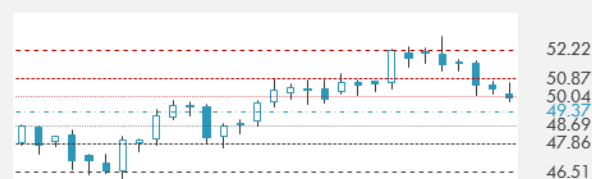
Gold Spot \$/Oz	1274.85	0.25%
Silver Spot \$/Oz	16.5843	-0.31%
Platinum Spot \$/Oz	914.99	0.33%
Palladium Spot \$/Oz	926.59	0.72%
Gold Future	1276.8	0.17%
Silver Future	16.624	-0.16%
Platinum Future	914.8	-0.08%
Palladium Future	919.65	0.30%

Base Metals

LME Aluminum	2166	1.64%
LME Copper	6521	0.02%
LME Zinc	3302	1.16%
LME Nickel	10615	-0.05%
LME Lead	2560	-1.20%
LME Tin	20775	-0.12%

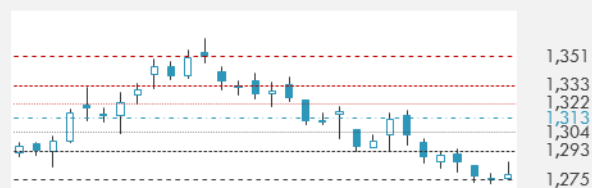
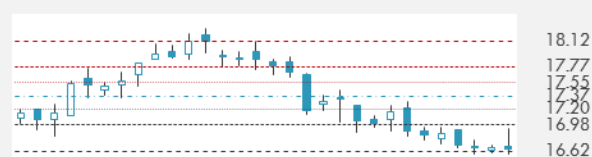
Agricultural

Corn CBT	348.25	-0.36%
Wheat CBT	442	-1.34%
Soybeans CBT	958.25	0.31%
Bean Meal CBT	311	-0.16%
Rough Rice CBT	12.03	0.12%
MDE Palm Oil	2715	1.19%
Soybean CBT	33.23	1.47%
Coffee ICE	125.15	-0.24%
Sugar #11 ICE	14.25	1.50%
Cotton #2 ICE	68.8	1.90%
Cocoa ICE	2078	-0.19%
Ethanol CME	1.436	-1.10%
Lumber CME	408.8	-0.39%
Orange Juice ICE	158.2	1.87%
Live Cattle CME	114.925	0.02%
Feeder Cattle CME	153.5	-0.52%
Lean Hogs CME	61.9	-0.28%

COMMODITY INDEX SUPPORT & RESISTANCE

WTI OIL 30 DAYS SUPPORT & RESISTANCE


- Oil held three days of declines as a flood of U.S. crude exports revived concerns that a global glut will persist.
- Gold may have found support, at least until monthly U.S. nonfarm payroll numbers on Friday.

Source: Bloomberg

GOLD 30 DAYS SUPPORT & RESISTANCE

SILVER 30 DAYS SUPPORT & RESISTANCE


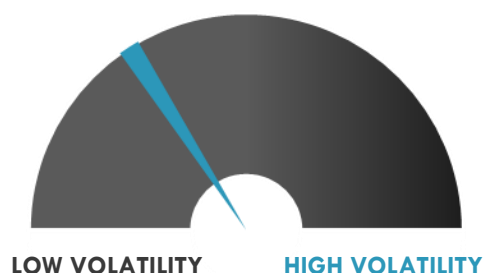
TOP 10 WINNERS

	Ticker	Last Price	Daily %
S&P 500 Stocks			
MYLAN NV	MYL	37.8	16.20
ACUITY BRANDS	AYI	178.33	5.11
TRIPADVISOR INC	TRIP	43.4	3.73
ENERGY CORP	ETR	78.41	3.61
NETFLIX INC	NFLX	184.45	2.94
DENTSPLY SIRONA	XRAY	57.21	2.80
DELPHI AUTOMOTIV	DLPH	102.31	2.70
DOLLAR TREE INC	DLTR	89.05	2.57
ARCONIC INC	ARNC	26.77	2.45
CROWN CASTLE INT	CCI	101.89	2.25

TOP 10 LOSERS

	Ticker	Last Price	Daily %
S&P 500 Stocks			
MICRON TECH	MU	39.56	-2.01
RYDER SYSTEM INC	R	82.99	-2.19
SOUTHWESTRN ENGY	SWN	6.12	-2.24
HCA HEALTHCARE I	HCA	77.69	-2.25
FRONTIER COMMUNI	FTR	12.26	-2.70
L BRANDS INC	LB	41.36	-3.18
H&R BLOCK INC	HRB	25.7	-3.35
WASTE MANAGEMENT	WM	76.33	-3.72
ADVANCE AUTO PAR	AAP	94.93	-4.09
REPUBLIC SVCS	RSG	63.31	-4.87

S&P 500 DISTRIBUTION

S&P VOLATILITY INDEX


- The European Commission has moved to refer Ireland to the European Court of Justice for failing to recover up to €13B of illegal state aid from Apple. In a parallel case, Europe's competition chief said Luxembourg must collect around €250M of back taxes from Amazon, adding to a growing list of scalps for Margrethe Vestager in her crackdown on tax loopholes.
- Amazon launches pre-orders for its new Echo, Echo Plus and Echo Dot products in India.
- Amazon has approached French supermarket Leclerc as part of its push to partner with or acquire distributors in the region.
- Alibaba-backed online lender Qudian sets its IPO terms to 37.5M ADS offered between \$19 and \$22 each. The IPO could raise up to \$825M or up to \$948.8M if underwriters exercise all additional share options.
- Toshiba continues to push back on Western Digital's claims that the latter has the right to approve any sale of the Toshiba chip unit.
- Exxon Mobil says its 362K bbl/day Beaumont, Tex., refinery is at normal operations for the first time since the facility was closed more than a month ago by flooding due to Hurricane Harvey. The refinery's 45K bbl/day coking unit reportedly completed its first 24-cycle run since the refinery was shut by the storm; the coker was the final unit to return to full production because two of its eight drums reportedly were clogged with petroleum coke sludge.
- IBM teams up with major banks to build a new global blockchain system for trade finance, according to the Financial Times.

KEY ECONOMIC INDICATORS

Country	Event	Surv(M)	Actual	Prior	Time
Canada	Int'l Merchandise Trade	-2.60b	--	-3.04b	15:30
Eurozone	Markit Eurozone Retail PMI	--	--	50.8	11:10
France	Markit France Retail PMI	--	--	50.4	11:10
Germany	Markit Germany Construction PMI	--	--	54.9	10:30
Germany	Markit Germany Retail PMI	--	--	53	11:10
Italy	Markit Italy Retail PMI	--	--	48	11:10
Russia	CPI YoY	3.10%	--	3.30%	
Russia	CPI Core MoM	0.20%	--	0.10%	
Russia	CPI MoM	0.00%	--	-0.50%	
Russia	CPI YTD	1.80%	--	1.80%	
United Kingdom	New Car Registrations YoY	--	--	-6.40%	11:00
United States	Initial Jobless Claims	265k	--	272k	15:30
United States	Durable Goods Orders	1.70%	--	1.70%	17:00
United States	Factory Orders	1.00%	--	-3.30%	17:00
United States	Trade Balance	-\$42.7b	--	-\$43.7b	15:30
United States	Durables Ex Transportation	--	--	0.20%	17:00
United States	Continuing Claims	1950k	--	1934k	15:30
United States	Cap Goods Orders Nondef Ex Air	--	--	0.90%	17:00
United States	Cap Goods Ship Nondef Ex Air	--	--	0.70%	17:00
United States	Challenger Job Cuts YoY	--	--	5.10%	14:30

Source: Bloomberg

Banque BEMO sal

Head Office - Private and Corporate Banking

 96 Pasteur Building, Pasteur Street, Medawar Area, P.O. Box: 16-6353, Beirut - Lebanon
 Tel: + 961 1 568 250 Fax: + 961 1 568 266

Investment & Research research@bemobank.com

 Beirut Central District Riad El Solh Square, Esseily Building Bloc A, 7th Floor Beirut - Lebanon
 Tel: + 961 1 992 600 Fax: + 961 1 983 368
www.bemobank.com

Disclaimer:

This report is published for information purposes only. The information herein has been compiled from, or based upon sources considered to be reliable (Bloomberg, SeekingAlpha, DailyStar...), but we do not guarantee or assume responsibility for its completeness and accuracy. This document should not be construed as a solicitation to take part in any investment, or as constituting any representation or warranty on our part. This report is not to be relied upon in substitution for the exercise of specialists.

We may not have taken any steps to ensure that the securities referred to in this report are suitable for any particular investor. The investments and services contained or referred to herein are not purported to be exhaustive, any person considering an investment should seek specialist advice on the suitability of an investment.

Nothing in this report constitutes investment, legal, accounting or tax advice, or a representation that any investment or strategy is suitable or appropriate to your individual circumstances, or otherwise constitutes a personal recommendation. Clients understand that it is their responsibility to seek legal and/or tax advice regarding the legal and tax consequences of their investment transactions. The consequences of any action taken on the basis of information contained herein are solely the responsibility of the recipient.

Investment instruments are subject to risk, including possible loss of principal amount invested. Past performance should not be taken as an indication or guarantee of future performance, and no representation or warranty, express or implied, is made regarding future performance. The value of securities and financial instruments is subject to exchange rate fluctuation that may have a positive or adverse effect on the price or income of such securities or financial instruments. Some investments mentioned in this report may have a high level of volatility. High volatility investments may experience sudden and large falls in their value causing losses when that investment is realized. Some investments may not be readily realizable and it may be difficult to sell or realize those investments, similarly it may prove difficult to obtain reliable information about the value, or risks, to which such an investment is exposed.

This report may provide the addresses of websites or references. We have not reviewed any such site and takes no responsibility for the content contained therein. Such address or reference is provided solely for convenience and information. Accessing such website through this report shall be at the recipients own risk.