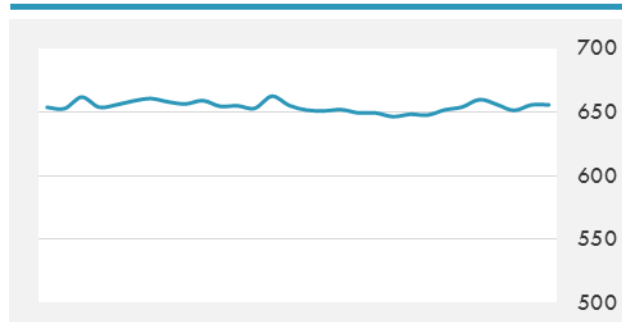
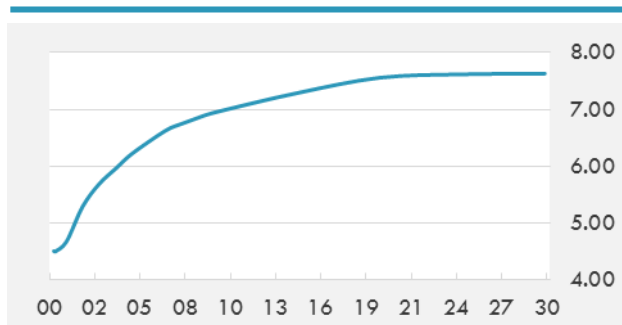


BEIRUT STOCK EXCHANGE

	Last	Daily %	YTD %	Dividend %
Development and Reconstruction				
Solidere A	7.98	0.00%	-23.12%	
Solidere B	8	0.00%	-23.81%	
Solidere GDR	7.6	0.00%	-24.00%	
Banking				
Audi Listed	5.85	0.00%	-13.97%	8.52%
BLC Listed	0.93	0.00%	-6.06%	0.00%
BOB Listed	18.8	0.00%	0.00%	3.52%
Byblos Listed	1.61	0.00%	-5.29%	8.22%
BEMO Listed	1.3	0.00%	-23.53%	4.07%
BLOM Listed	11.65	0.00%	9.91%	8.50%
Trading				
RYMCO	3.25	0.00%	0.00%	
Industrial				
Holcim	13.99	0.00%	19.06%	17.06%
Ciments Blancs	1.82	0.00%	15.92%	0.00%

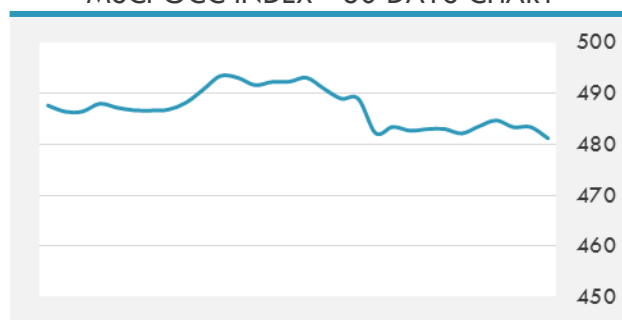
MSCI LEBANON INDEX - 30 DAYS CHART

LEBANESE USD SOVEREIGN CURVE


- Prime Minister Saad Hariri Thursday met Finance Minister Ali Hassan Khalil, Economy and Trade Minister Raed Khour and Central Bank governor Riad Salameh at the Grand Serail. The discussions focused on the preparation of the Lebanese delegation to take part in the annual conference of the World Bank and International Monetary Fund from Oct. 11 to 15. Lebanese officials normally give extensive briefings about the financial and monetary conditions in Lebanon to both organizations

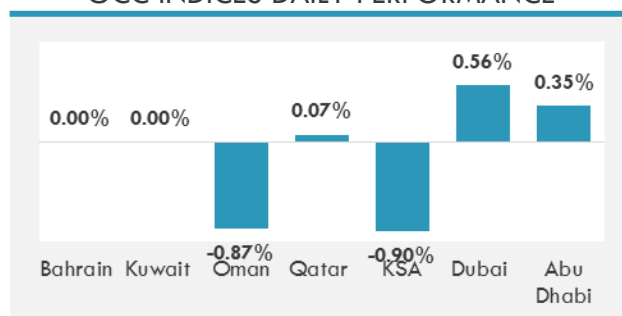
Source: Daily Star, Gulf Base

GCC EQUITY INDICES

	Last Price	Daily %	YTD %
Bahrain	1279.21	0.40%	4.81%
Kuwait	6659.75	-0.04%	15.86%
Oman	5168.12	0.00%	-10.63%
Qatar	8137.57	0.00%	-22.03%
KSA	7194.06	0.00%	-0.23%
Dubai	3608.26	-0.08%	2.19%
Abu Dhabi	4434.04	0.10%	-2.47%

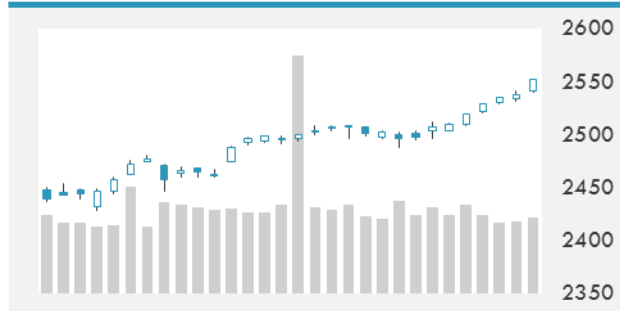
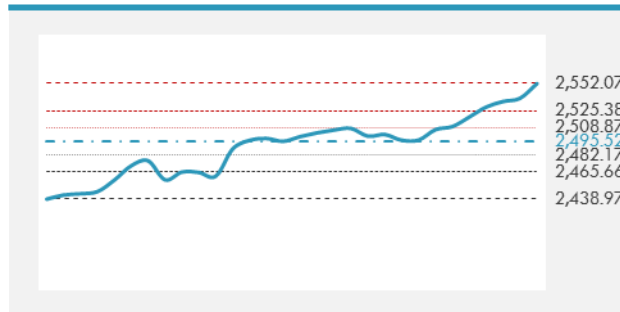
MSCI GCC INDEX - 30 DAYS CHART

LOCAL/GCC FOREIGN EXCHANGE

	Cross	Last Price
Lebanese Pound Spot	USD/LBP	1506.5
Bahraini Dinar Spot	USD/BHD	0.37727
Kuwaiti Dinar Spot	USD/KWD	0.30229
Omani Rial Spot	USD/OMR	0.385
Qatari Riyal Spot	USD/QAR	3.6659
Saudi Riyal Spot	USD/SAR	3.7503
UAE Dirham Spot	USD/AED	3.673

GCC INDICES DAILY PERFORMANCE


UNITED STATES EQUITY MARKET INDICES

	Last Price	Daily %	YTD %	Δ10D Vol
Major Indices				
Dow Jones	22773.67	0.00%	15.24%	-0.62%
S&P 500	2549.33	0.00%	13.87%	-0.40%
Nasdaq	6590.18	0.00%	22.42%	-2.89%
Sectors Indices				
Discretionary	730.3655	0.00%	12.74%	-0.79%
Staples	553.77	0.00%	4.13%	0.88%
Energy	503.79	0.00%	-9.15%	-2.23%
Financials	437.25	0.00%	13.12%	-0.31%
Healthcare	959.6	0.00%	20.41%	-0.55%
Industrials	612.37	0.00%	13.81%	0.07%
IT	1033.46	0.00%	27.91%	-5.21%
Materials	362.96	0.00%	16.27%	0.37%
Telecom	160.56	0.00%	-9.09%	4.81%
Utilities	270.89	0.00%	9.75%	-1.11%
Real Estate	200.18	0.00%	5.23%	0.04%

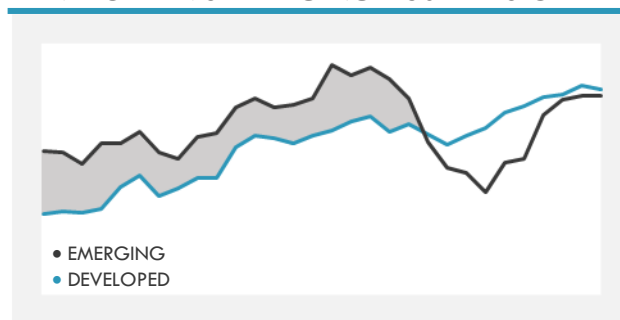
S&P 500 INDEX - 30 DAYS CHART

S&P 500 SUPPORT & RESISTANCE


- A late-afternoon bounce led by technology stocks failed to erase losses for the S&P 500 that were accumulated earlier when September unemployment fell to 4.2%, average hourly earnings came in higher than forecast and tension flared up again on the Korean peninsula.
- European equities rose, propelled by a rally in Spanish stocks amid bets Catalan separatists will avoid an immediate declaration of independence from the country.
- Chinese stocks rose as trading resumed after a week-long holiday but an Asia-wide benchmark was little changed as markets in Japan, South Korea and Taiwan were closed.

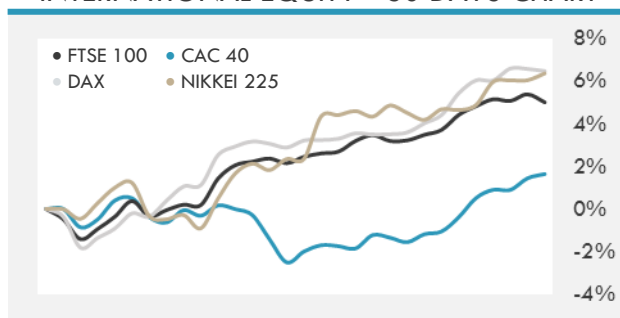
Source: Bloomberg

INTERNATIONAL MARKETS INDICES

	Last Price	Daily %	YTD %	Δ10D Vol
World	1200	0.00%	16.39%	-0.85%
Developed	2014.02	0.00%	15.01%	-0.48%
Emerging	1103.12	0.00%	27.93%	-2.55%
Frontier	2890.51	0.00%	19.53%	-2.34%
Europe	131.48	0.00%	7.33%	1.53%
Latin America	2953.69	0.00%	26.19%	0.53%
Asia Pacific	163.31	0.00%	20.93%	-0.48%

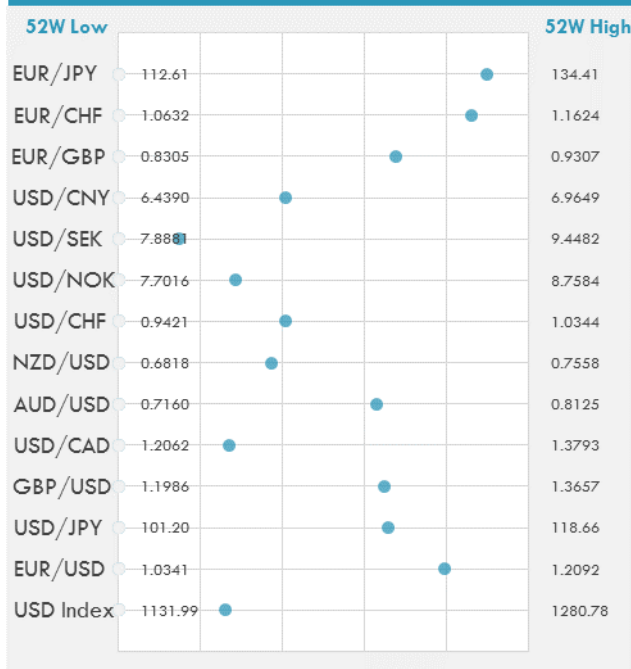
DEVELOPED VS EMERGING - 30 DAYS CHART

INTERNATIONAL EQUITY INDICES

	Last Price	Daily %	YTD %	Δ10D Vol
EuroStoxx 50	3603.32	0.00%	9.51%	0.39%
FTSE 100	7522.87	0.00%	5.32%	-0.51%
CAC 40	5359.9	0.00%	10.23%	0.33%
DAX	12955.94	0.00%	12.85%	0.07%
Swiss SMI	9252.12	0.00%	12.56%	0.14%
Nikkei 225	20690.71	0.00%	8.25%	-0.22%
CSI 300	3894.26	1.51%	17.65%	0.00%

INTERNATIONAL EQUITY - 30 DAYS CHART


FOREIGN EXCHANGE MARKET

	Last Price	Daily %	Δ10D	Vol 25	ΔRR
Major USD Cross Rate					
USD Index	1170.06	-0.03%	0.00%	-	
EUR/USD	1.1727	-0.03%	-0.38%	0.255	
USD/JPY	112.61	-0.04%	-0.50%	-0.955	
GBP/USD	1.3108	0.32%	0.73%	-0.783	
USD/CAD	1.2539	0.08%	-0.22%	0.165	
AUD/USD	0.7764	-0.04%	-0.42%	-0.330	
NZD/USD	0.7073	-0.28%	-0.76%	-0.600	
USD/CHF	0.9789	-0.08%	0.14%	-0.583	
USD/NOK	7.9960	-0.07%	-1.16%	0.095	
USD/SEK	8.1222	0.04%	-1.75%	0.068	
USD/CNY	6.6372	-0.23%	0.00%	0.163	
Major EUR Cross Rate					
EUR/GBP	0.89464	-0.39%	-0.05%	0.698	
EUR/CHF	1.14795	-0.05%	-0.39%	-0.128	
EUR/JPY	132.06	-0.08%	0.01%	-0.720	

DISTANCE FROM 52 WEEKS LOW/HIGH


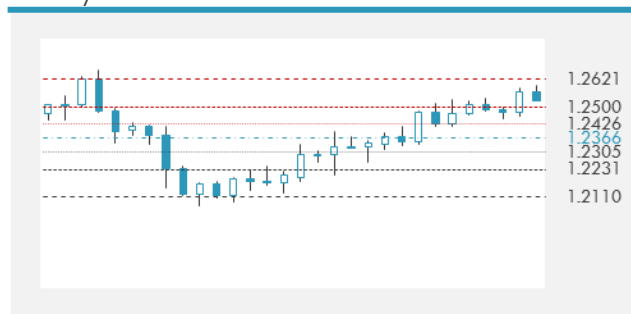
- The Bloomberg Dollar Spot Index headed for its best weekly run in a year before a jobs report from the U.S. that may support dollar bulls no matter what the reading.
- New Zealand's dollar slumps to a four-month low after final election results showed the two main political parties are each in a position to form a viable coalition government.
- Asia's emerging currencies were steady amid a lack of market drivers, while most government bonds dropped as a spike in U.S. hourly wages pushed Treasury yields higher and bolstered the odds for tighter monetary policy.

Source: Bloomberg

EUR/USD 30 DAYS SUPPORT & RESISTANCE

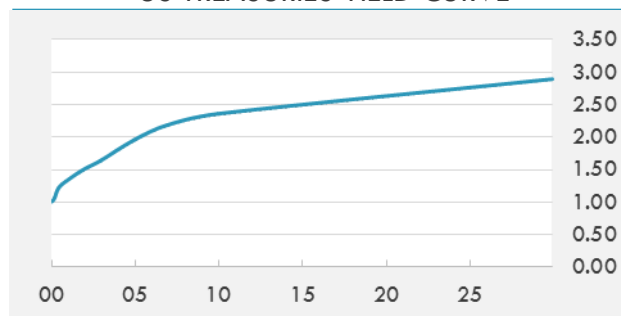
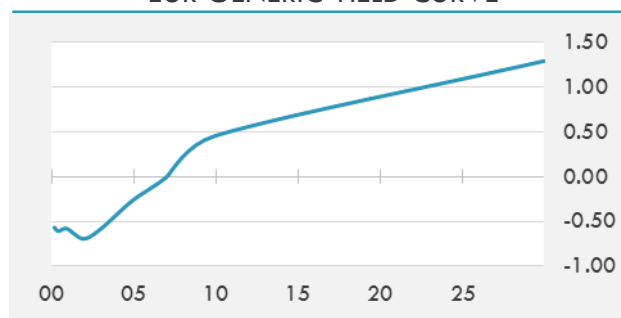
GBP/USD 30 DAYS SUPPORT & RESISTANCE

USD/JPY 30 DAYS SUPPORT & RESISTANCE

USD/CAD 30 DAYS SUPPORT & RESISTANCE


GLOBAL BOND INDICES

	Yield	ΔYield (in Bps)
Benchmark Indices		
US 10 Years Benchmark	2.3589	0.000
EU 10 Years Benchmark	0.463	0.004
UK 10 Years Benchmark	1.363	-0.024
Sovereign Bonds		
US Treasury Bond	1.982	0.017
Eurozone Sovereign Bond	0.658	0.002
U.K. Sovereign Bond	1.327	-0.018
Japan Sovereign Bond	0.13	0.011
USD Emerging Sovereign Bond	4.412	0.033
Corporate Bonds		
US Investment Grade Bond	3.18	0.014
US High Yield Bond	5.507	0.02
EUR Investment Grade Bond	0.664	0
EUR High Yield Bond	1.987	-0.014
USD Emerging Market IG & HY	4.516	0.018

US TREASURIES YIELD CURVE

EUR GENERIC YIELD CURVE


- Treasury futures dip while S&P edges higher, paring the risk-off moves seen late on Friday, as concerns over any imminent missile launch from N. Korea recede after no further developments over the weekend.
- Yields on benchmark T-bills rose Friday as Treasury is set to sell \$133b of short-term securities on Tuesday since the U.S. bond market will be closed for the Columbus Day holiday on Oct. 9.
- Bund futures called to open little changed, as Treasury futures are mostly flat in poor volumes, with news flow light and cash Treasuries closed given holidays in U.S. and Japan.

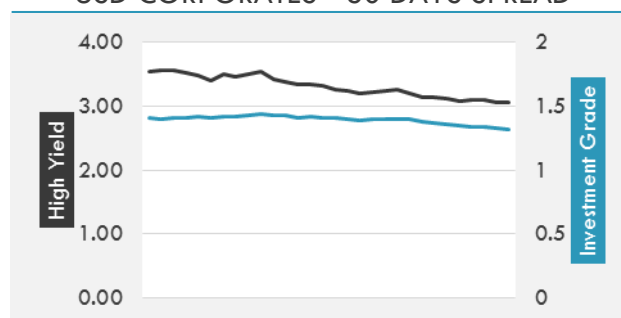
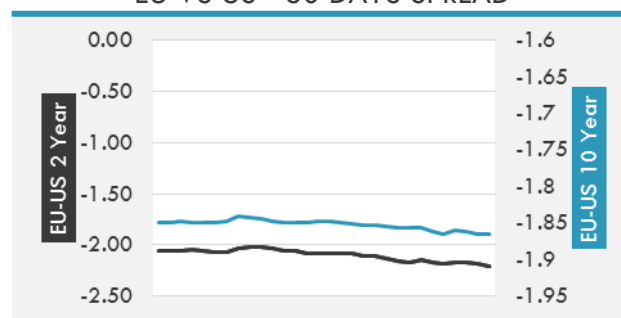
Source: Bloomberg

OVERNIGHT RATES - SWAPS

	Yield	ΔYield (in Bps)
3M USD LIBOR	1.35028	0.0017
3M EUR EURIBOR	-0.329	0.0000
3M GBP LIBOR	0.3435	0.0000
3Y USD SWAP	1.8908	0.0143
5Y USD SWAP	2.0418	0.0133
10Y USD SWAP	2.3173	0.0118
30Y USD SWAP	2.5687	0.0063

FIXED INCOME SPREADS

	Spread	ΔSpread (in Bps)
USD 3M vs 10Y Spread	1.29033	0.0097
USD 2Y vs 10Y Spread	0.85079	(0.0059)
USD IG Spread	1.32	(0.0100)
USD HY Spread	3.06	-
EU vs US 10Y Spread	-1.8999	(0.0080)
EU vs US 2Y Spread	-2.2044	(0.0220)
EM vs Benchmark Spread	224	(0.700)

USD CORPORATES - 30 DAYS SPREAD

EU VS US - 30 DAYS SPREAD


GLOBAL COMMODITIES MARKET

	Last Price	Daily %
Commodity Index	84.14	0.26%

Energy

WTI Crude Future	49.39	0.20%
Brent Crude Future	55.75	0.23%
NYMEX Gasoline	155.14	-0.47%
NYMEX Heat Oil	173.98	-0.24%
ICE Gasoil	518	0.44%
NYMEX Natural Gas	2.865	0.07%

Precious Metals

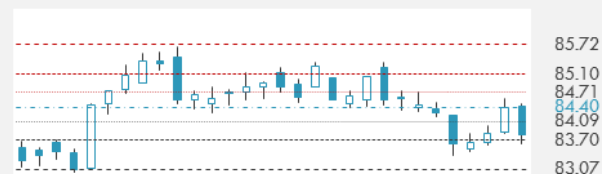
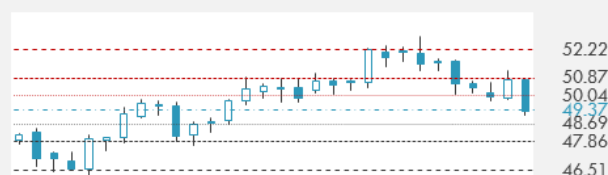
Gold Spot \$/Oz	1282.21	0.43%
Silver Spot \$/Oz	16.9326	0.57%
Platinum Spot \$/Oz	919.48	0.36%
Palladium Spot \$/Oz	930.66	0.80%
Gold Future	1284.6	0.76%
Silver Future	16.955	0.98%
Platinum Future	922.4	0.62%
Palladium Future	928.85	1.07%

Base Metals

LME Aluminum	2153	0.00%
LME Copper	6667	0.00%
LME Zinc	3235	0.00%
LME Nickel	10600	0.00%
LME Lead	2533	0.00%
LME Tin	20550	0.00%

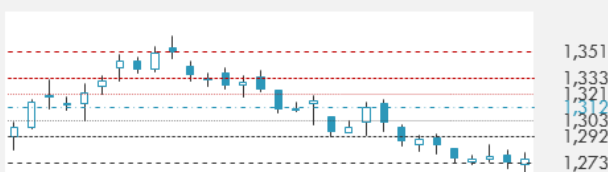
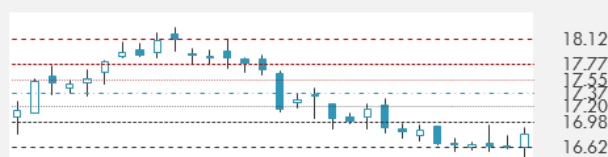
Agricultural

Corn CBT	351	0.29%
Wheat CBT	443.5	0.00%
Soybeans CBT	973	0.08%
Bean Meal CBT	319	-0.06%
Rough Rice CBT	11.94	0.46%
MDE Palm Oil	2743	0.48%
Soybean CBT	33.1	0.46%
Coffee ICE	130	0.00%
Sugar #11 ICE	13.98	0.00%
Cotton #2 ICE	68.59	-0.36%
Cocoa ICE	2085	0.00%
Ethanol CME	1.405	-1.06%
Lumber CME	412.1	0.00%
Orange Juice ICE	157.15	0.00%
Live Cattle CME	116.925	0.00%
Feeder Cattle CME	155.75	0.00%
Lean Hogs CME	60.925	0.00%

COMMODITY INDEX SUPPORT & RESISTANCE

WTI OIL 30 DAYS SUPPORT & RESISTANCE


- Oil traded below \$50 a barrel as workers started returning to platforms in the Gulf of Mexico after Hurricane Nate crossed the coast.
- Gold advances for second day as investors weigh a fresh flare-up in tensions with North Korea.

Source: Bloomberg

GOLD 30 DAYS SUPPORT & RESISTANCE

SILVER 30 DAYS SUPPORT & RESISTANCE


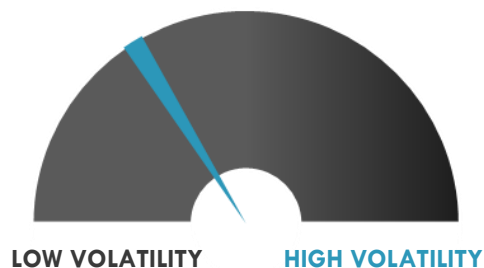
TOP 10 WINNERS

	Ticker	Last Price	Daily %
S&P 500 Stocks			
MOTOROLA Solutio	MSI	89.44	4.00
UNDER ARMOUR-A	UAA	17.02	2.96
UNDER ARMO-C	UA	15.46	2.86
GENERAL MOTORS C	GM	44.93	2.46
BEST BUY CO INC	BBY	58.76	2.21
DXC TECHNOLOGY C	DXC	87.44	1.94
APPLIED MATERIAL	AMAT	52.4	1.89
NETFLIX INC	NFLX	198.02	1.87
VERTEX PHARM	VRTX	155.1	1.84
YUM! BRANDS INC	YUM	75.93	1.81

TOP 10 LOSERS

	Ticker	Last Price	Daily %
S&P 500 Stocks			
COSTCO WHOLESALE	COST	157.09	-5.97
CVS HEALTH CORP	CVS	76.92	-4.92
WALGREENS BOOTS	WBA	73.2	-4.87
NASDAQ INC	NDAQ	73.9	-4.83
TRIPADVISOR INC	TRIP	41.61	-4.59
AMERISOURCEBERGE	ABC	80.48	-4.33
KANSAS CITY SOUT	KSU	103.74	-3.42
RANGE RESOURCES	RRC	19.99	-2.87
MOSAIC CO/THE	MOS	21.02	-2.87
FREEMPORT-MCMORAN	FCX	14.33	-2.85

S&P 500 DISTRIBUTION

S&P VOLATILITY INDEX


- China has given its approval to HP's long-running \$1.1B deal to buy Samsung's printer business, with a few restrictions. The Ministry of Commerce says HP needs to be "fair and reasonable" in selling its A4 format laser printers, and that HP must report data including prices to the ministry every six months.
- Netflix soared to the top of the S&P 500 in yesterday's trade, advancing 5.4% to a new all-time high after announcing an upcoming price bump for its U.S. streaming services. Analysts say NFLX subscribers are not likely to cancel in droves as they have in response to some previous price increases because the service now offers more content and is cheaper than many new rivals.
- Facebook cut references to Russia from a public report in April about manipulation of its platform around the presidential election, raising new questions about when the company became aware of the situation, WSJ reports.
- Google's AI-focused DeepMind arm lost about \$162M last year on \$52.7M in revenue, according to filings with the UK government.
- A smart speaker with Microsoft's Cortana voice assistant could hit stores soon with some details revealed in an accidental Microsoft Store listing.
- The Wall Street Journal reports that less than 1M people watched recent seasons of Amazon's series Transparent, a darling with critics and award shows.
- Elon Musk says Tesla has sent a small Powerwall installation team to Puerto Rico amid the nation's electricity crisis. A larger training team will follow, he adds

KEY ECONOMIC INDICATORS

Country	Event	Surv(M)	Actual	Prior	Time
China	Caixin China PMI Composite	--	51.4	52.4	4:45
China	Caixin China PMI Services	--	50.6	52.7	4:45
China	Foreign Reserves	\$3100.0b	--	\$3091.5b	
Eurozone	Sentix Investor Confidence	28.5	--	28.2	11:30
Eurozone	ECB's Mersch speaks in Milan				10:45
Eurozone	ECB's Lautenschlaeger Speaks in Stuttgart				19:00
France	Bank of France Ind. Sentiment	105	104	104	9:30
France	France to Sell Up to EUR3.2 Bln 91-Day Bills				15:50
France	France to Sell Up to EUR1.2 Bln 154-Day Bills				15:50
Germany	Industrial Production SA MoM	0.90%	2.60%	0.00%	9:00
Germany	Industrial Production WDA YoY	2.90%	4.70%	4.00%	9:00
Germany	Germany to Sell EUR2 Bln 182-Day Bills				12:30
Iran	CPI YoY	--	--	8.60%	
Jordan	CPI YoY	--	--	2.28%	
Jordan	M1 Money Supply YoY	--	--	0.57%	
Jordan	M2 Money Supply YoY	--	--	1.24%	
Jordan	Unemployment Rate	--	--	18.20%	
Luxembourg	Finance Ministers Discuss European Stability				16:00
Portugal	Bank of Portugal Governor Speaks at Lisbon				11:00
Russia	Light Vehicle Car Sales YoY	18%	--	17%	

Source: Bloomberg

Banque BEMO sal
Head Office - Private and Corporate Banking

 96 Pasteur Building, Pasteur Street, Medawar Area, P.O. Box: 16-6353, Beirut - Lebanon
 Tel: + 961 1 568 250 Fax: + 961 1 568 266

Wealth & Investment Management research@bemobank.com

 Beirut Central District Riad El Solh Square, Esseily Building Bloc A, 7th Floor Beirut - Lebanon
 Tel: + 961 1 992 600 Fax: + 961 1 983 368
www.bemobank.com
Disclaimer:

This report is published for information purposes only. The information herein has been compiled from, or based upon sources considered to be reliable (Bloomberg, SeekingAlpha, DailyStar...), but we do not guarantee or assume responsibility for its completeness and accuracy. This document should not be construed as a solicitation to take part in any investment, or as constituting any representation or warranty on our part. This report is not to be relied upon in substitution for the exercise of specialists.

We may not have taken any steps to ensure that the securities referred to in this report are suitable for any particular investor. The investments and services contained or referred to herein are not purported to be exhaustive, any person considering an investment should seek specialist advice on the suitability of an investment.

Nothing in this report constitutes investment, legal, accounting or tax advice, or a representation that any investment or strategy is suitable or appropriate to your individual circumstances, or otherwise constitutes a personal recommendation. Clients understand that it is their responsibility to seek legal and/or tax advice regarding the legal and tax consequences of their investment transactions. The consequences of any action taken on the basis of information contained herein are solely the responsibility of the recipient.

Investment instruments are subject to risk, including possible loss of principal amount invested. Past performance should not be taken as an indication or guarantee of future performance, and no representation or warranty, express or implied, is made regarding future performance. The value of securities and financial instruments is subject to exchange rate fluctuation that may have a positive or adverse effect on the price or income of such securities or financial instruments. Some investments mentioned in this report may have a high level of volatility. High volatility investments may experience sudden and large falls in their value causing losses when that investment is realized. Some investments may not be readily realizable and it may be difficult to sell or realize those investments, similarly it may prove difficult to obtain reliable information about the value, or risks, to which such an investment is exposed.

This report may provide the addresses of websites or references. We have not reviewed any such site and takes no responsibility for the content contained therein. Such address or reference is provided solely for convenience and information. Accessing such website through this report shall be at the recipients own risk.