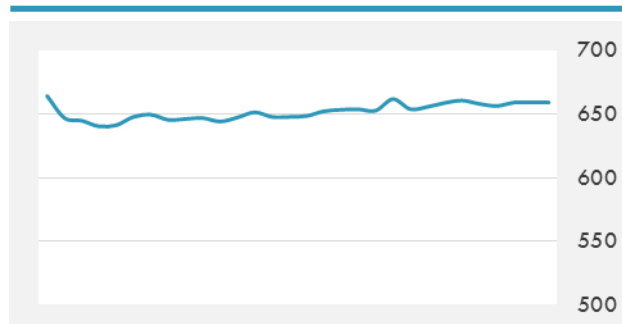
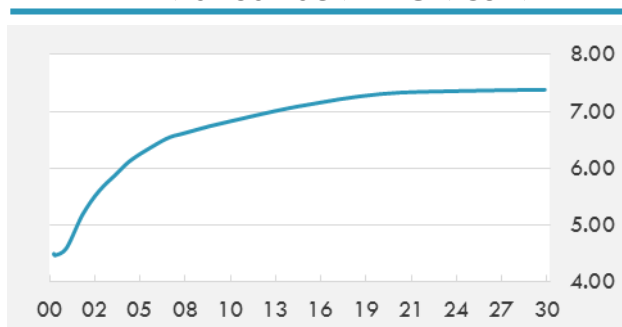


BEIRUT STOCK EXCHANGE

	Last	Daily %	YTD %	Dividend %
Development and Reconstruction				
Solidere A	8.18	0.00%	-21.19%	
Solidere B	8.2	0.00%	-21.90%	
Solidere GDR	7.6	0.00%	-24.00%	
Banking				
Audi Listed	5.95	0.00%	-12.50%	8.38%
BLC Listed	0.93	0.00%	-6.06%	0.00%
BOB Listed	18.8	0.00%	0.00%	3.52%
Byblos Listed	1.6	0.00%	-5.88%	8.22%
BEMO Listed	1.55	0.00%	-8.82%	3.41%
BLOM Listed	11.5	0.00%	8.49%	8.61%
Trading				
RYMCO	3.25	0.00%	0.00%	
Industrial				
Holcim	12.51	0.00%	6.47%	19.08%
Ciments Blancs	1.82	0.00%	15.92%	0.00%

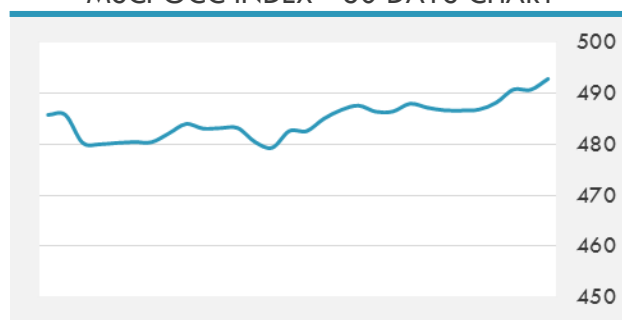
MSCI LEBANON INDEX - 30 DAYS CHART

LEBANESE USD SOVEREIGN CURVE


- Energy and Water Minister Cesar Abi Khalil Friday extended the first offshore oil and gas bidding round from Sept. 15 to Oct. 12, 2017.
- The newly appointed Casino du Liban chairman Roland Khoury has many ambitious plans to revitalize this important facility and one of these goals is the launch of the first and only licensed online gambling site in Lebanon.

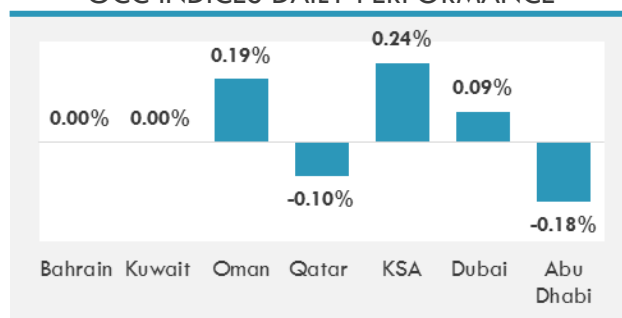
Source: TheDailyStar, GulfBase

GCC EQUITY INDICES

	Last Price	Daily %	YTD %
Bahrain	1315.55	0.00%	7.89%
Kuwait	6897.42	0.00%	20.50%
Oman	5056.57	0.19%	-12.56%
Qatar	8666.55	-0.10%	-16.96%
KSA	7377.95	0.24%	2.32%
Dubai	3647.55	0.09%	3.30%
Abu Dhabi	4445.72	-0.18%	-2.21%

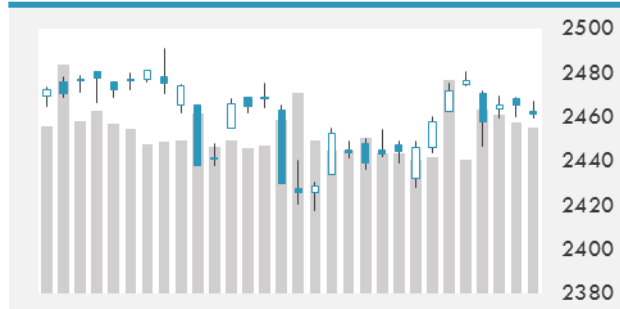
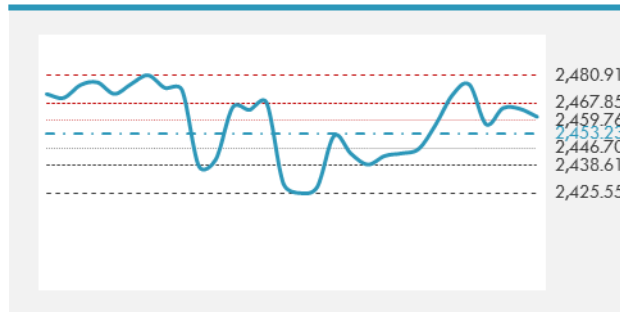
MSCI GCC INDEX - 30 DAYS CHART

LOCAL/GCC FOREIGN EXCHANGE

	Cross	Last Price
Lebanese Pound Spot	USD/LBP	1507.67
Bahraini Dinar Spot	USD/BHD	0.37709
Kuwaiti Dinar Spot	USD/KWD	0.30112
Omani Rial Spot	USD/OMR	0.385
Qatari Riyal Spot	USD/QAR	3.695
Saudi Riyal Spot	USD/SAR	3.7502
UAE Dirham Spot	USD/AED	3.673

GCC INDICES DAILY PERFORMANCE


UNITED STATES EQUITY MARKET INDICES

	Last Price	Daily %	YTD %	Δ10D Vol
Major Indices				
Dow Jones	21797.79	0.06%	10.30%	-0.03%
S&P 500	2461.43	-0.15%	9.94%	0.15%
Nasdaq	6360.191	-0.59%	18.15%	0.89%
Sectors Indices				
Discretionary	707.77	-0.35%	9.25%	0.32%
Staples	564.63	-0.65%	6.18%	2.18%
Energy	471.43	-1.06%	-14.98%	2.73%
Financials	398.58	0.77%	3.12%	0.92%
Healthcare	951.83	0.42%	19.44%	-0.53%
Industrials	579.53	0.34%	7.71%	-0.12%
IT	1000.91	-0.86%	23.88%	1.74%
Materials	343.03	-0.02%	9.89%	-0.02%
Telecom	149.85	-0.13%	-15.15%	-2.21%
Utilities	279.03	0.44%	13.05%	0.23%
Real Estate	204.41	0.00%	7.45%	-0.11%

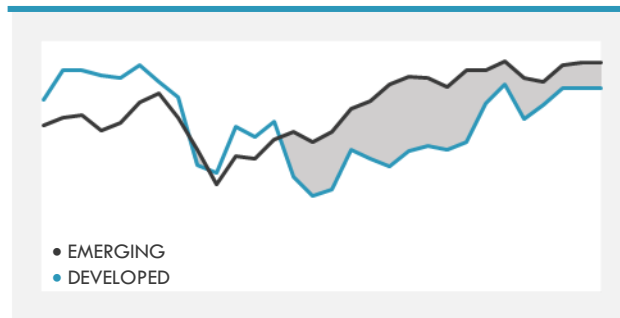
S&P 500 INDEX - 30 DAYS CHART

S&P 500 SUPPORT & RESISTANCE


- Most Asian markets rallied after the perceived threat of a North Korean missile test at the weekend failed to materialize.
- U.S. stocks fell as Hurricane Irma headed toward Florida with the potential to become the most expensive storm in U.S. history. Apple dropped for a fourth day ahead of the iPhone maker's scheduled release of its latest gadget next week.
- European stocks ended the session little changed, narrowing their decline for the week, as investors assessed a slowdown in China's export growth and the euro above \$1.20.

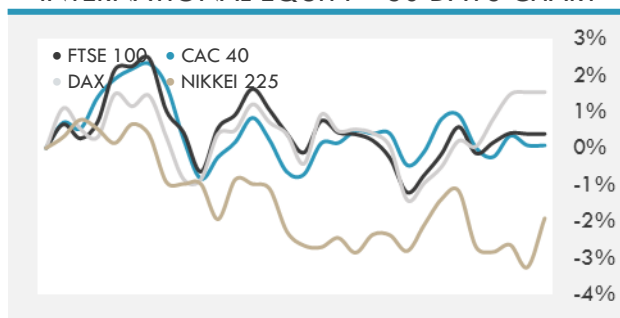
Source: Bloomberg

INTERNATIONAL MARKETS INDICES

	Last Price	Daily %	YTD %	Δ10D Vol
World	1172.43	0.01%	13.71%	0.02%
Developed	1964.52	0.00%	12.18%	0.04%
Emerging	1091.17	0.10%	26.55%	-0.02%
Frontier	2836.95	-0.07%	17.31%	0.06%
Europe	126.72	0.13%	3.45%	-0.45%
Latin America	2942.08	-0.39%	25.69%	-0.21%
Asia Pacific	161.54	0.27%	19.62%	0.11%

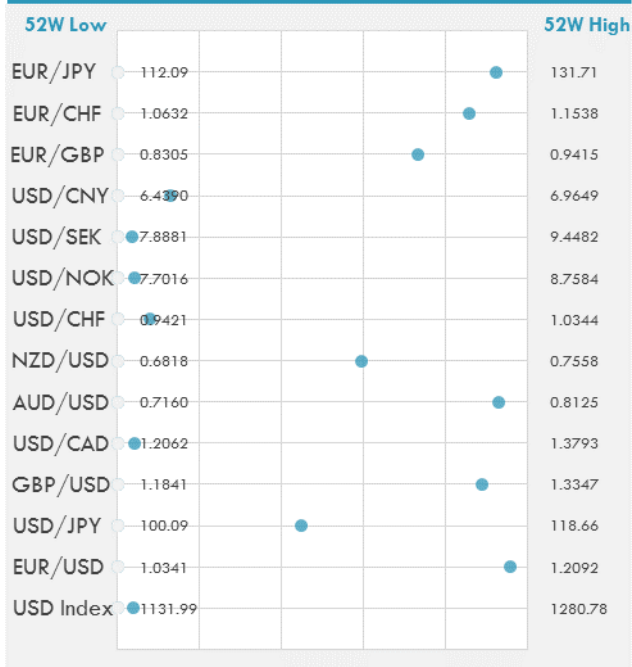
DEVELOPED VS EMERGING - 30 DAYS CHART

INTERNATIONAL EQUITY INDICES

	Last Price	Daily %	YTD %	Δ10D Vol
EuroStoxx 50	3447.69	0.00%	4.78%	-0.58%
FTSE 100	7377.6	-0.26%	3.29%	0.09%
CAC 40	5113.49	-0.02%	5.17%	-0.49%
DAX	12303.98	0.06%	7.17%	-0.35%
Swiss SMI	8912.05	0.06%	8.42%	-0.47%
Nikkei 225	19542.41	1.39%	2.24%	0.54%
CSI 300	3823.69	-0.06%	15.52%	-3.52%

INTERNATIONAL EQUITY - 30 DAYS CHART


FOREIGN EXCHANGE MARKET

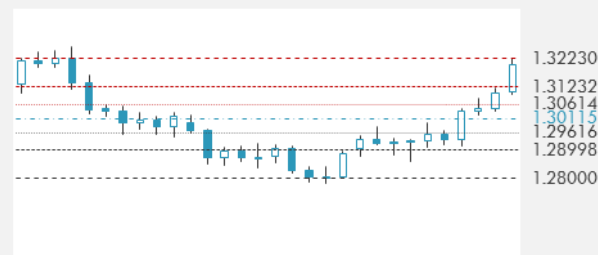
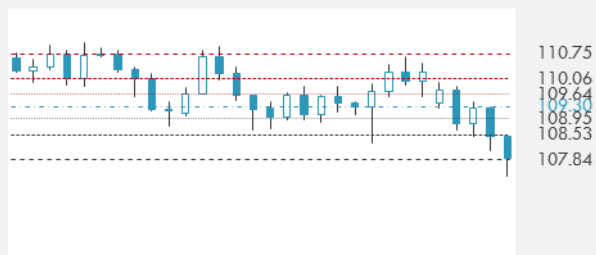
	Last Price	Daily %	Δ10D	Vol 25	ΔRR
Major USD Cross Rate					
USD Index	1137.74	0.16%	0.00%	-	
EUR/USD	1.2014	-0.18%	0.09%	0.458	
USD/JPY	108.37	0.49%	0.16%	-1.838	
GBP/USD	1.3177	-0.17%	0.12%	-0.070	
USD/CAD	1.2135	-0.20%	-0.16%	0.093	
AUD/USD	0.8055	-0.06%	-0.10%	-0.243	
NZD/USD	0.7257	-0.11%	0.02%	-0.423	
USD/CHF	0.9495	0.56%	0.70%	-0.653	
USD/NOK	7.7462	0.08%	0.01%	-0.070	
USD/SEK	7.9415	0.13%	-0.06%	0.038	
USD/CNY	6.5068	0.19%	0.48%	0.560	
Major EUR Cross Rate					
EUR/GBP	0.91176	-0.01%	-0.05%	0.218	
EUR/CHF	1.14076	0.37%	0.58%	-0.255	
EUR/JPY	130.19	0.31%	-0.11%	-1.018	

DISTANCE FROM 52 WEEKS LOW/HIGH


- The dollar climbed from a 32-month low as concerns over Hurricane Irma eased and the anniversary of North Korea's founding passed without a missile test.
- China's yuan tumbled in both the onshore and offshore markets after the PBOC set its daily fixing at a weaker-than-expected level, and following the reported removal of a reserve requirement for trading foreign-exchange forwards.
- CAD pares gains ahead of employment data after rising to a 2-year high.

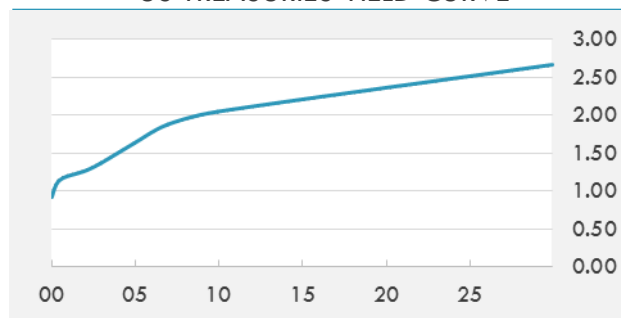
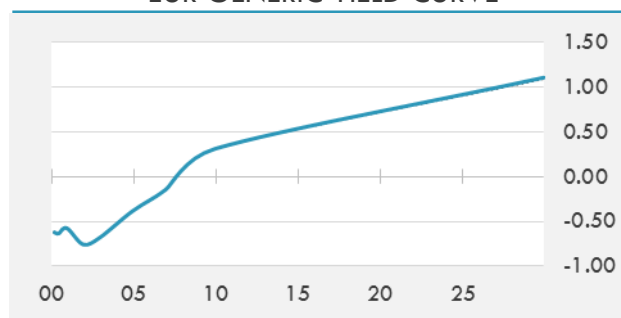
Source: Bloomberg

EUR/USD 30 DAYS SUPPORT & RESISTANCE

GBP/USD 30 DAYS SUPPORT & RESISTANCE

USD/JPY 30 DAYS SUPPORT & RESISTANCE

USD/CAD 30 DAYS SUPPORT & RESISTANCE


GLOBAL BOND INDICES

	Yield	ΔYield (in Bps)
Benchmark Indices		
US 10 Years Benchmark	2.0507	0.012
EU 10 Years Benchmark	0.312	0.005
UK 10 Years Benchmark	0.99	0.018
Sovereign Bonds		
US Treasury Bond	1.719	0
Eurozone Sovereign Bond	0.554	0.017
U.K. Sovereign Bond	1.013	0.017
Japan Sovereign Bond	0.073	-0.011
USD Emerging Sovereign Bond	4.258	-0.013
Corporate Bonds		
US Investment Grade Bond	3.052	0.008
US High Yield Bond	5.657	0.051
EUR Investment Grade Bond	0.583	0.005
EUR High Yield Bond	2.087	0.039
USD Emerging Market IG & HY	4.453	-0.002

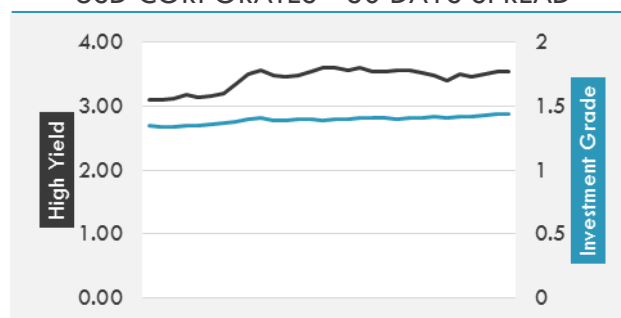
US TREASURIES YIELD CURVE

EUR GENERIC YIELD CURVE


- U.S. government bonds decline across the curve as demand for haven assets eased after North Korea avoided testing a missile over the weekend and hurricane Irma was downgraded to a Category 4 storm.
- Bund futures slipped Friday following a Reuters report that ECB policy makers were said to have discussed possible hawkish QE scenarios, including reduction to EU40b or EU20b and 6- to 9-month extensions.

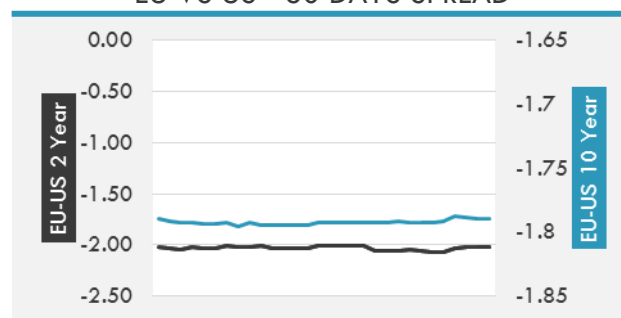
Source: Bloomberg

OVERNIGHT RATES - SWAPS

	Yield	ΔYield (in Bps)
3M USD LIBOR	1.31033	-0.0069
3M EUR EURIBOR	-0.331	-0.0010
3M GBP LIBOR	0.2855	-0.0003
3Y USD SWAP	1.5783	-0.0002
5Y USD SWAP	1.7168	0.0052
10Y USD SWAP	2.0129	0.0109
30Y USD SWAP	2.3256	0.0121

USD CORPORATES - 30 DAYS SPREAD

FIXED INCOME SPREADS

	Spread	ΔSpread (in Bps)
USD 3M vs 10Y Spread	1.00377	0.0133
USD 2Y vs 10Y Spread	0.78462	0.0119
USD IG Spread	1.44	0.0100
USD HY Spread	3.54	0.0300
EU vs US 10Y Spread	-1.7385	(0.0083)
EU vs US 2Y Spread	-2.0214	(0.0054)
EM vs Benchmark Spread	241.6	(0.600)

EU VS US - 30 DAYS SPREAD


GLOBAL COMMODITIES MARKET

	Last Price	Daily %
Commodity Index	84.76	-1.05%

Energy

WTI Crude Future	47.48	-3.28%
Brent Crude Future	53.78	-1.30%
NYMEX Gasoline	164.76	-0.81%
NYMEX Heat Oil	176.57	-1.14%
ICE Gasoil	524	0.14%
NYMEX Natural Gas	2.89	-3.05%

Precious Metals

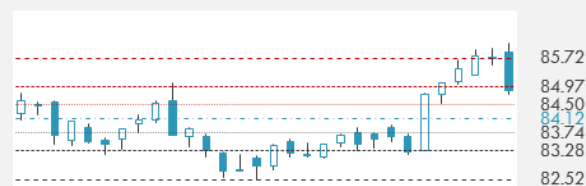
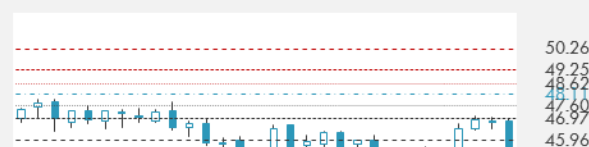
Gold Spot \$/Oz	1346.59	-0.19%
Silver Spot \$/Oz	17.9695	-0.86%
Platinum Spot \$/Oz	1007.6	-1.06%
Palladium Spot \$/Oz	935.59	-2.33%
Gold Future	1351.2	0.07%
Silver Future	18.123	0.04%
Platinum Future	1012.3	-0.44%
Palladium Future	931.25	-1.85%

Base Metals

LME Aluminum	2099	-0.38%
LME Copper	6693	-2.98%
LME Zinc	3031	-3.13%
LME Nickel	11590	-4.61%
LME Lead	2265	-3.21%
LME Tin	20550	-0.96%

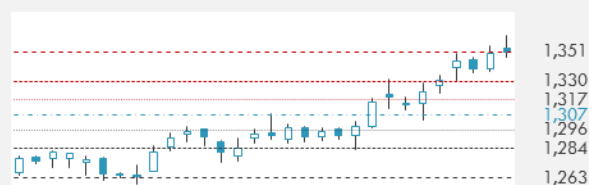
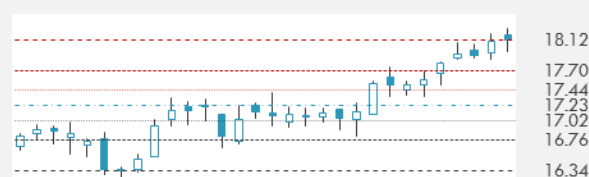
Agricultural

Corn CBT	356.75	0.42%
Wheat CBT	437.75	0.11%
Soybeans CBT	962	-0.70%
Bean Meal CBT	305.2	-0.65%
Rough Rice CBT	12.72	0.24%
MDE Palm Oil	2762	-0.72%
Soybean CBT	34.94	-1.38%
Coffee ICE	130.65	1.16%
Sugar #11 ICE	14.09	0.43%
Cotton #2 ICE	74.59	0.43%
Cocoa ICE	1933	1.42%
Ethanol CME	1.535	0.59%
Lumber CME	388.1	1.36%
Orange Juice ICE	154	5.23%
Live Cattle CME	107.325	1.04%
Feeder Cattle CME	148.425	1.56%
Lean Hogs CME	62.15	1.14%

COMMODITY INDEX SUPPORT & RESISTANCE

WTI OIL 30 DAYS SUPPORT & RESISTANCE


- Oil rose as Hurricane Irma weakened after hitting the Florida coast and as Gulf Coast refining continued to recover following storm Harvey.
- Gold declines as United Nations prepares to vote on tougher North Korean sanctions and strength of Hurricane Irma eases.

Source: Bloomberg

GOLD 30 DAYS SUPPORT & RESISTANCE

SILVER 30 DAYS SUPPORT & RESISTANCE


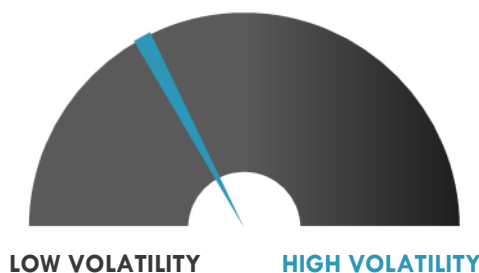
TOP 10 WINNERS

	Ticker	Last Price	Daily %
S&P 500 Stocks			
XL GROUP LTD	XL	38.61	5.84
EVEREST RE GROUP	RE	222.48	4.97
CHUBB LTD	CB	140.85	4.43
ABBVIE INC	ABBV	85.34	4.35
LEGGETT & PLATT	LEG	45.3	4.14
TRAVELERS COS IN	TRV	119.76	3.98
MARSH & MCLENNAN	MMC	81.95	3.94
PROGRESSIVE CORP	PGR	45.41	3.84
ALLSTATE CORP	ALL	89.61	3.66
ARTHUR J GALLAGH	AJG	59.69	3.48

TOP 10 LOSERS

	Ticker	Last Price	Daily %
S&P 500 Stocks			
EQUIFAX INC	EFX	123.23	-13.66
KROGER CO	KR	21.06	-7.51
RANGE RESOURCES	RRC	16.58	-7.43
FREEMONT-MCMORAN	FCX	14.24	-6.38
CHESAPEAKE ENERG	CHK	3.64	-5.94
CHIPOTLE MEXICAN	CMG	300.03	-5.43
NEWFIELD EXPLORA	NFX	24.8	-5.42
MARATHON OIL	MRO	11.31	-3.99
INCYTE CORP	INCY	129.46	-3.63
APACHE CORP	APA	39.3	-3.51

S&P 500 DISTRIBUTION

S&P VOLATILITY INDEX


- Facebook's ad sales team is targeting the drug industry. The company's health unit hosted an invite-only breakfast for pharmaceutical marketers yesterday to learn about targeting users for their clinical trials.
- China's economic data has been showing robust growth ahead of leadership changes and a key Communist Party meeting in October.
- A massive 8-magnitude earthquake hit off the coast of southern Mexico late last night, causing buildings to sway violently and people to evacuate as far away as the capital city.
- A reusable Falcon 9 rocket, carrying a secretive space drone, blasted off from Cape Canaveral on Thursday as Hurricane Irma barreled towards Florida.
- Google hasn't seen evidence on its advertising platforms regarding the kind of suspected Russian propaganda that Facebook said appeared on its network before and after last year's U.S. presidential election.
- French President Emmanuel Macron has vowed to lead a "rebuilding" of the EU, proposing a "new deal" according to which deficit countries will repair their finances and overhaul their economies.
- The Senate has approved more than \$15B in aid funding for Hurricanes Harvey and Irma, attached to a debt ceiling extension and temporary government funding, by a vote of 80-17.
- Ford will offer hybrid gasoline-electric versions of all its Lincoln models in the U.S. by 2022, according to Reuters. An all-electric Lincoln model is also being considered.
- Disney has dropped Microsoft as a partner for its Disney Movies Anywhere service.

KEY ECONOMIC INDICATORS

Country	Event	Surv(M)	Actual	Prior	Time
Canada	Housing Starts	216.0k	--	222.3k	15:15
China	Money Supply M2 YoY	9.10%	--	9.20%	
China	New Yuan Loans CNY	950.0b	--	825.5b	
China	Money Supply M1 YoY	14.80%	--	15.30%	
China	Money Supply M0 YoY	6.00%	--	6.10%	
China	Aggregate Financing CNY	1280.0b	--	1220.0b	
France	Bank of France Ind. Sentiment	106	--	105	9:30
Italy	Industrial Production MoM	-0.40%	--	1.10%	11:00
Italy	Industrial Production WDA YoY	3.70%	--	5.30%	11:00
Italy	Industrial Production NSA YoY	--	--	5.40%	11:00
Japan	Machine Orders MoM	4.10%	8.00%	-1.90%	2:50
Japan	Tertiary Industry Index MoM	0.10%	0.10%	0.00%	7:30
Japan	Money Stock M2 YoY	4.10%	4.00%	4.00%	2:50
Japan	Money Stock M3 YoY	3.40%	3.40%	3.40%	2:50
Japan	Machine Tool Orders YoY	--	--	28.00%	9:00
Japan	Machine Orders YoY	-7.80%	-7.50%	-5.20%	2:50
Russia	GDP YoY	2.50%	--	2.50%	
Russia	Trade Balance	6.5b	--	8.7b	16:00
Russia	Exports	27.4b	--	29.5b	16:00
Russia	Imports	20.8b	--	20.8b	16:00

Source: Bloomberg

Banque BEMO sal

Head Office - Private and Corporate Banking

96 Pasteur Building, Pasteur Street, Medawar Area, P.O. Box: 16-6353, Beirut - Lebanon
 Tel: + 961 1 568 250 Fax: + 961 1 568 266

Investment & Research research@bemobank.com

Beirut Central District Riad El Solh Square, Esseily Building Bloc A, 7th Floor Beirut - Lebanon
 Tel: + 961 1 992 600 Fax: + 961 1 983 368
www.bemobank.com

Disclaimer:

This report is published for information purposes only. The information herein has been compiled from, or based upon sources considered to be reliable (Bloomberg, SeekingAlpha, DailyStar...), but we do not guarantee or assume responsibility for its completeness and accuracy. This document should not be construed as a solicitation to take part in any investment, or as constituting any representation or warranty on our part. This report is not to be relied upon in substitution for the exercise of specialists.

We may not have taken any steps to ensure that the securities referred to in this report are suitable for any particular investor. The investments and services contained or referred to herein are not purported to be exhaustive, any person considering an investment should seek specialist advice on the suitability of an investment.

Nothing in this report constitutes investment, legal, accounting or tax advice, or a representation that any investment or strategy is suitable or appropriate to your individual circumstances, or otherwise constitutes a personal recommendation. Clients understand that it is their responsibility to seek legal and/or tax advice regarding the legal and tax consequences of their investment transactions. The consequences of any action taken on the basis of information contained herein are solely the responsibility of the recipient.

Investment instruments are subject to risk, including possible loss of principal amount invested. Past performance should not be taken as an indication or guarantee of future performance, and no representation or warranty, express or implied, is made regarding future performance. The value of securities and financial instruments is subject to exchange rate fluctuation that may have a positive or adverse effect on the price or income of such securities or financial instruments. Some investments mentioned in this report may have a high level of volatility. High volatility investments may experience sudden and large falls in their value causing losses when that investment is realized. Some investments may not be readily realizable and it may be difficult to sell or realize those investments, similarly it may prove difficult to obtain reliable information about the value, or risks, to which such an investment is exposed.

This report may provide the addresses of websites or references. We have not reviewed any such site and takes no responsibility for the content contained therein. Such address or reference is provided solely for convenience and information. Accessing such website through this report shall be at the recipients own risk.