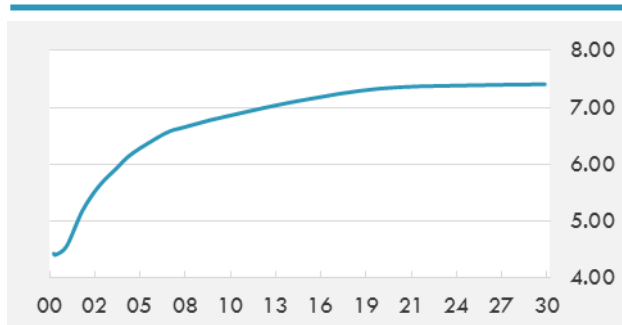


BEIRUT STOCK EXCHANGE

	Last	Daily %	YTD %	Dividend %
Development and Reconstruction				
Solidere A	8.07	-1.34%	-22.25%	
Solidere B	7.89	-3.78%	-24.86%	
Solidere GDR	7.6	0.00%	-24.00%	
Banking				
Audi Listed	5.95	0.00%	-12.50%	8.38%
BLC Listed	0.93	0.00%	-6.06%	0.00%
BOB Listed	18.8	0.00%	0.00%	3.52%
Byblos Listed	1.6	0.00%	-5.88%	8.27%
BEMO Listed	1.55	0.00%	-8.82%	3.44%
BLOM Listed	11.5	0.00%	8.49%	8.61%
Trading				
RYMCO	3.25	0.00%	0.00%	
Industrial				
Holcim	12.51	0.00%	6.47%	19.08%
Ciments Blancs	1.82	0.00%	15.92%	0.00%

MSCI LEBANON INDEX - 30 DAYS CHART

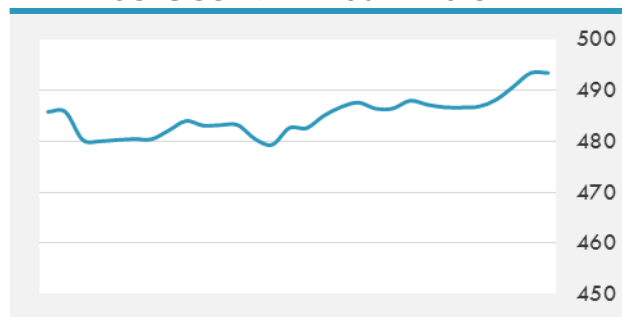
LEBANESE USD SOVEREIGN CURVE


- The elements that keep the Lebanese pound stable are stronger than ever despite attempts to undermine the Central Bank's monetary policy, economists said Monday.
- Egypt, the world's biggest wheat buyer, risks facing tender boycotts for a second season after it stopped another vessel from unloading on concern it may contain poppy seeds that are banned in the country.

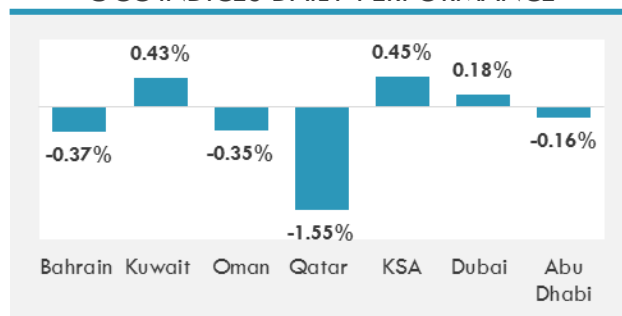
Source: TheDailyStar, GulfBase

GCC EQUITY INDICES

	Last Price	Daily %	YTD %
Bahrain	1310.63	-0.37%	7.39%
Kuwait	6927.03	0.43%	20.25%
Oman	5038.69	-0.35%	-12.87%
Qatar	8532.4	-1.55%	-18.25%
KSA	7411.3	0.45%	2.79%
Dubai	3654.04	0.18%	3.45%
Abu Dhabi	4438.46	-0.16%	-2.25%

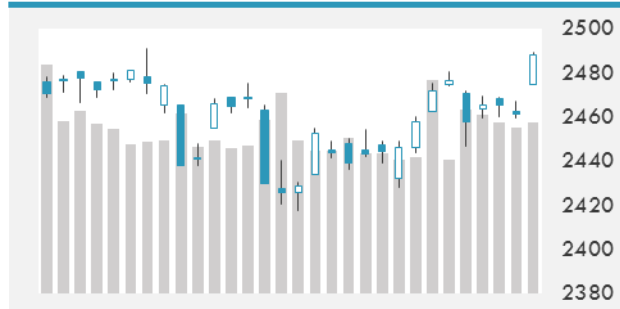
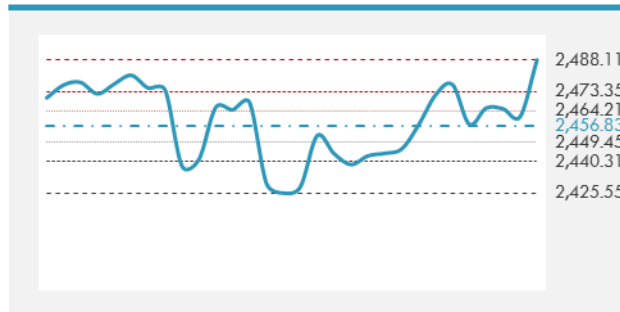
MSCI GCC INDEX - 30 DAYS CHART

LOCAL/GCC FOREIGN EXCHANGE

	Cross	Last Price
Lebanese Pound Spot	USD/LBP	1506.5
Bahraini Dinar Spot	USD/BHD	0.37709
Kuwaiti Dinar Spot	USD/KWD	0.30138
Omani Rial Spot	USD/OMR	0.385
Qatari Riyal Spot	USD/QAR	3.72
Saudi Riyal Spot	USD/SAR	3.7502
UAE Dirham Spot	USD/AED	3.673

GCC INDICES DAILY PERFORMANCE


UNITED STATES EQUITY MARKET INDICES

	Last Price	Daily %	YTD %	Δ10D Vol
Major Indices				
Dow Jones	22057.37	1.19%	11.61%	2.54%
S&P 500	2488.11	1.08%	11.13%	1.95%
Nasdaq	6432.264	1.13%	19.49%	1.24%
Sectors Indices				
Discretionary	711.56	0.54%	9.84%	0.38%
Staples	568.44	0.67%	6.89%	0.61%
Energy	476.23	1.02%	-14.12%	-0.16%
Financials	405.5	1.74%	4.91%	3.30%
Healthcare	959.66	0.82%	20.42%	0.15%
Industrials	584.51	0.86%	8.63%	0.94%
IT	1015.94	1.50%	25.74%	2.41%
Materials	347.8	1.39%	11.42%	1.98%
Telecom	150.37	0.35%	-14.86%	0.80%
Utilities	281.62	0.93%	14.09%	1.52%
Real Estate	205.93	0.74%	8.25%	-0.31%

S&P 500 INDEX - 30 DAYS CHART

S&P 500 SUPPORT & RESISTANCE


- Asian equities extended gains for a fourth day after U.S. stocks rose to a record as Hurricane Irma wreaked less damage than forecast and the United Nations' sanctions against North Korea weren't as stringent as expected.
- U.S. equities rallied to new records Monday, a swift turnaround in sentiment after investors went into the weekend with a list of worries from Hurricane Irma to North Korean posturing. Gains were widespread in the market as Irma-related damage appeared to be less than expected and tensions with Kim Jong Un's regime ebbed.

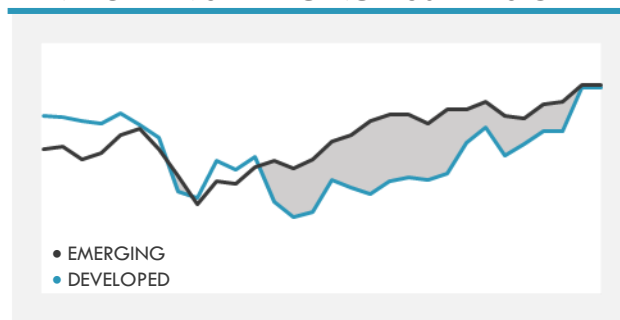
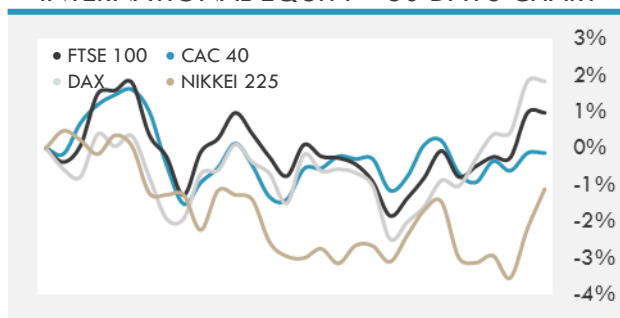
Source: Bloomberg

INTERNATIONAL MARKETS INDICES

	Last Price	Daily %	YTD %	Δ10D Vol
World	1182.63	0.87%	14.70%	1.37%
Developed	1981.97	0.89%	13.18%	1.39%
Emerging	1099.18	0.73%	27.48%	0.32%
Frontier	2854.08	0.60%	18.02%	0.49%
Europe	128.05	1.05%	4.53%	-1.55%
Latin America	2985.41	1.47%	27.55%	1.62%
Asia Pacific	162.29	0.46%	20.18%	0.13%

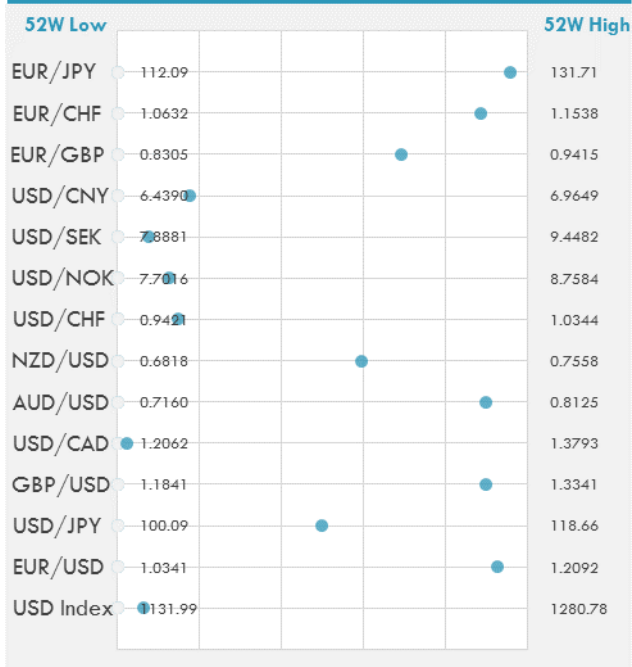
INTERNATIONAL EQUITY INDICES

	Last Price	Daily %	YTD %	Δ10D Vol
EuroStoxx 50	3495.19	1.38%	6.22%	-0.12%
FTSE 100	7413.59	0.49%	3.79%	-1.19%
CAC 40	5176.71	1.24%	6.47%	-0.44%
DAX	12475.24	1.39%	8.66%	-3.55%
Swiss SMI	8982.23	0.79%	9.27%	-0.12%
Nikkei 225	19761.21	1.10%	3.38%	2.55%
CSI 300	3839.04	0.35%	15.98%	-0.10%

DEVELOPED VS EMERGING - 30 DAYS CHART

INTERNATIONAL EQUITY - 30 DAYS CHART


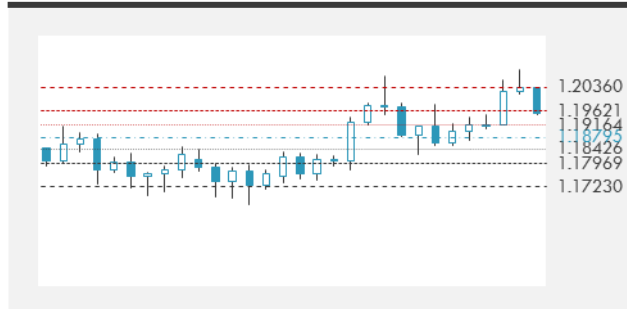
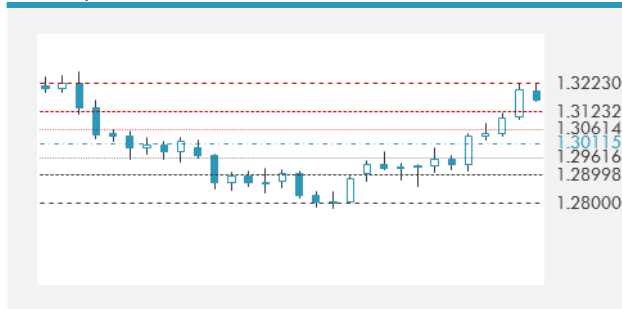
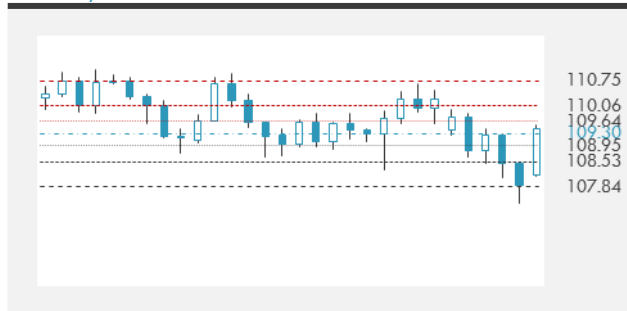
FOREIGN EXCHANGE MARKET

	Last Price	Daily %	Δ10D	Vol 25	ΔRR
Major USD Cross Rate					
USD Index	1141.33	-0.07%	-0.70%	-	
EUR/USD	1.1964	0.09%	-1.22%	0.323	
USD/JPY	109.35	-0.04%	-0.42%	-1.040	
GBP/USD	1.3186	0.17%	-0.06%	0.005	
USD/CAD	1.2101	-0.07%	-2.43%	0.085	
AUD/USD	0.8025	-0.05%	-1.12%	-0.248	
NZD/USD	0.7257	0.04%	-1.25%	-0.365	
USD/CHF	0.9557	-0.06%	-1.04%	-0.610	
USD/NOK	7.8340	-0.10%	-0.66%	0.095	
USD/SEK	8.0060	-0.09%	-0.29%	0.005	
USD/CNY	6.5315	0.04%	0.05%	0.385	
Major EUR Cross Rate					
EUR/GBP	0.90731	-0.08%	-0.76%	0.218	
EUR/CHF	1.14337	0.03%	-0.03%	-0.263	
EUR/JPY	130.83	0.05%	-0.08%	-0.740	

DISTANCE FROM 52 WEEKS LOW/HIGH


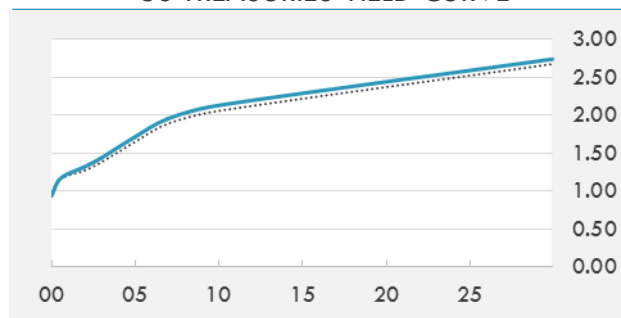
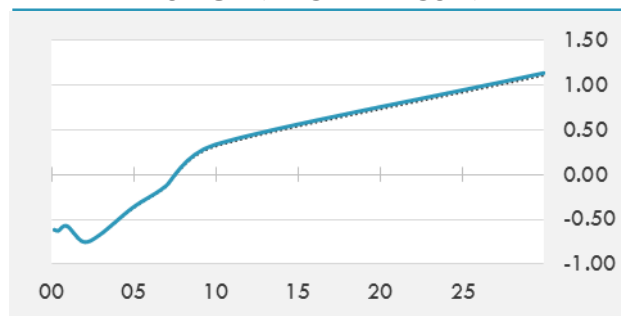
- The dollar's rally lost steam as concerns about lackluster inflation ahead of the key U.S. consumer price data Thursday offset investors' relief that North Korea hasn't responded to the latest sanctions.
- The yen dropped the most since January against the U.S. dollar, boosted by a revival in risk appetite after weekend risks failed to materialize.
- The onshore yuan slumps by the most in six months against a trade-weighted currency basket amid a weaker central bank fixing and a dollar surge overnight.

Source: Bloomberg

EUR/USD 30 DAYS SUPPORT & RESISTANCE

GBP/USD 30 DAYS SUPPORT & RESISTANCE

USD/JPY 30 DAYS SUPPORT & RESISTANCE

USD/CAD 30 DAYS SUPPORT & RESISTANCE


GLOBAL BOND INDICES

	Yield	ΔYield (in Bps)
Benchmark Indices		
US 10 Years Benchmark	2.1306	0.092
EU 10 Years Benchmark	0.336	0.029
UK 10 Years Benchmark	1.045	0.055
Sovereign Bonds		
US Treasury Bond	1.77	0.051
Eurozone Sovereign Bond	0.564	0.027
U.K. Sovereign Bond	1.057	0.061
Japan Sovereign Bond	0.081	-0.003
USD Emerging Sovereign Bond	4.275	0.004
Corporate Bonds		
US Investment Grade Bond	3.101	0.057
US High Yield Bond	5.627	0.021
EUR Investment Grade Bond	0.587	0.009
EUR High Yield Bond	2.029	-0.019
USD Emerging Market IG & HY	4.472	0.017

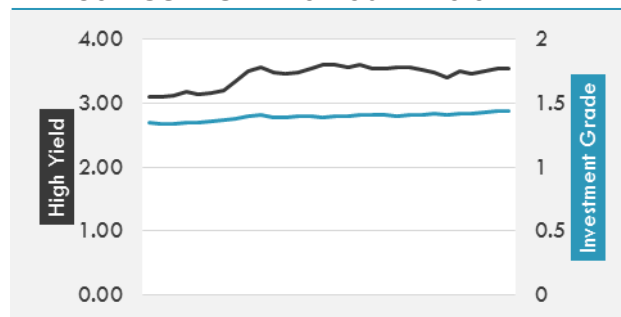
US TREASURIES YIELD CURVE

EUR GENERIC YIELD CURVE


- Treasuries sold off across the curve, ended near session lows after soft 3Y auction failed to ease grind lower into 3pm ET settlement; recovery of risk appetite saw United States Treasuries futures gap lower overnight, and risk tone remained positive throughout the session.
- Core euro-area bonds lower in broad risk-on move after anticipated North Korea missile test didn't materialize and Hurricane Irma was downgraded. Peripherals outperform.

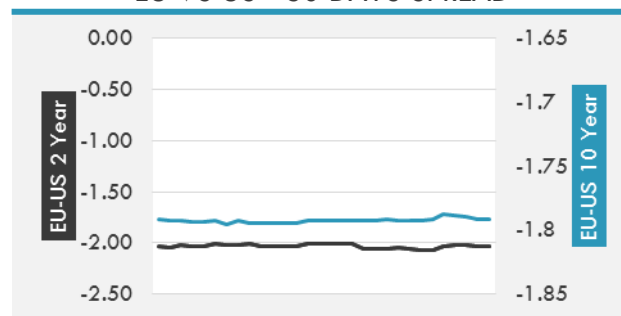
Source: Bloomberg

OVERNIGHT RATES - SWAPS

	Yield	ΔYield (in Bps)
3M USD LIBOR	1.31033	-0.0069
3M EUR EURIBOR	-0.331	-0.0010
3M GBP LIBOR	0.2855	-0.0003
3Y USD SWAP	1.6351	0.0566
5Y USD SWAP	1.785	0.0734
10Y USD SWAP	2.0848	0.0828
30Y USD SWAP	2.3911	0.0776

USD CORPORATES - 30 DAYS SPREAD

FIXED INCOME SPREADS

	Spread	ΔSpread (in Bps)
USD 3M vs 10Y Spread	1.0875	0.0970
USD 2Y vs 10Y Spread	0.80796	0.0352
USD IG Spread	1.43	-
USD HY Spread	3.43	(0.0800)
EU vs US 10Y Spread	-1.7643	(0.0341)
EU vs US 2Y Spread	-2.0397	(0.0237)
EM vs Benchmark Spread	238.2	(4.000)

EU VS US - 30 DAYS SPREAD


GLOBAL COMMODITIES MARKET

	Last Price	Daily %
Commodity Index	84.89	0.15%

Energy

WTI Crude Future	48.07	1.24%
Brent Crude Future	53.84	0.11%
NYMEX Gasoline	163.45	-0.80%
NYMEX Heat Oil	174.27	-1.30%
ICE Gasoil	516.75	-1.38%
NYMEX Natural Gas	2.95	2.08%

Precious Metals

Gold Spot \$/Oz	1327.54	-1.41%
Silver Spot \$/Oz	17.8075	-0.90%
Platinum Spot \$/Oz	991.9	-1.56%
Palladium Spot \$/Oz	936.75	0.12%
Gold Future	1335.7	-1.15%
Silver Future	17.902	-1.22%
Platinum Future	998.8	-1.33%
Palladium Future	931.65	0.04%

Base Metals

LME Aluminum	2122	1.10%
LME Copper	6748	0.82%
LME Zinc	3083	1.72%
LME Nickel	11765	1.51%
LME Lead	2277	0.53%
LME Tin	20750	0.97%

Agricultural

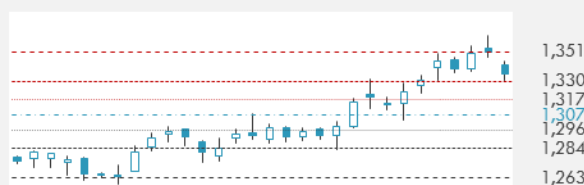
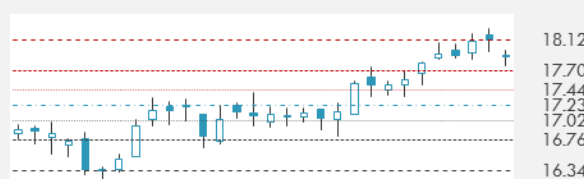
Corn CBT	357.5	0.21%
Wheat CBT	434.75	-0.69%
Soybeans CBT	960	-0.21%
Bean Meal CBT	303.6	-0.52%
Rough Rice CBT	12.655	-0.51%
MDE Palm Oil	2802	1.45%
Soybean CBT	35.15	0.60%
Coffee ICE	131.85	0.92%
Sugar #11 ICE	14.29	1.42%
Cotton #2 ICE	72.11	-3.32%
Cocoa ICE	1934	0.05%
Ethanol CME	1.544	0.59%
Lumber CME	378.1	-2.58%
Orange Juice ICE	151.45	-1.66%
Live Cattle CME	107.2	-0.12%
Feeder Cattle CME	149.35	0.62%
Lean Hogs CME	61.575	-0.93%

COMMODITY INDEX SUPPORT & RESISTANCE

WTI OIL 30 DAYS SUPPORT & RESISTANCE


- Oil held gains near \$48 a barrel as Hurricane Irma weakened further after moving inland and as Gulf Coast refining continued to recover following two strikes from Harvey.

Source: Bloomberg

GOLD 30 DAYS SUPPORT & RESISTANCE

SILVER 30 DAYS SUPPORT & RESISTANCE


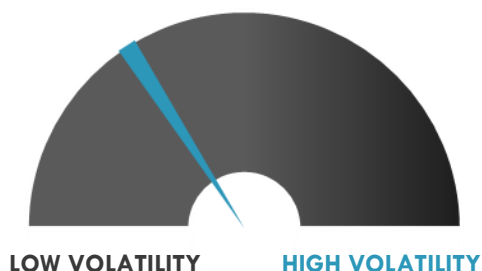
TOP 10 WINNERS

	Ticker	Last Price	Daily %
S&P 500 Stocks			
AMERICAN AIRLINE	AAL	45.86	5.18
XL GROUP LTD	XL	40.55	5.02
ALBEMARLE CORP	ALB	123.85	4.71
NAVIENT CORP	NAVI	14.13	4.59
DIGITAL REALTY	DLR	126.04	4.48
EVEREST RE GROUP	RE	231.96	4.26
GOODYEAR TIRE	GT	31.55	4.09
TEXTRON INC	TXT	51.19	3.96
ROYAL CARIBBEAN	RCL	121.69	3.61
CHUBB LTD	CB	145.88	3.57

TOP 10 LOSERS

	Ticker	Last Price	Daily %
S&P 500 Stocks			
EQUIFAX INC	EFX	113.12	-8.2
REGENERON PHARM	REGN	445.11	-5.6
VULCAN MATERIALS	VMC	117	-3.72
MARTIN MAR MTLs	MLM	204.26	-3.65
INCYTE CORP	INCY	124.95	-3.48
SEAGATE TECHNOLO	STX	30.95	-3.25
EXTRA SPACE STOR	EXR	79.73	-3.06
CHARTER COMMUN-A	CHTR	381.01	-3.03
NORDSTROM INC	JWN	44.72	-2.99
NEWMONT MINING	NEM	38.22	-2.77

S&P 500 DISTRIBUTION

S&P VOLATILITY INDEX


- The IMF must decide by year-end if it will fully participate in Greece's current bailout, Prime Minister Alexis Tsipras told reporters in Thessaloniki, stating Athens will be financially independent by 2018 and without supervision from its creditors.
- Details of Apple's 10th anniversary iPhone have been leaked ahead of tomorrow's highly anticipated launch.
- With a test system going live in Las Vegas next month, T-Mobile has set a goal for launching a nationwide internet-of-things network by mid-2018.
- Mercedes-Benz will offer electric versions of all its models by 2022, according to parent company Daimler, which said it would similarly convert its Smart city car brand to become fully electric.
- Chinese authorities plan to shut down domestic bitcoin exchanges, delivering a final blow to a once-thriving industry of commercial trading for virtual currencies, WSJ reports.
- Tesla sent a free update to some owners in Florida to help them extend their driving range ahead of Hurricane Irma.
- Google has appealed the record €2.4B fine lobbied against it by the European Union, shortly before a deadline to do so.
- Facebook has received just a €1.2M fine (about \$1.4M) from Spain's data watchdog for allegedly collecting personal information that could be used in advertising.
- Vodafone is putting some €2B (about \$2.4B) in investment into ultrafast fiber connections in Germany.

KEY ECONOMIC INDICATORS

Country	Event	Surv(M)	Actual	Prior	Time
China	Money Supply M2 YoY	9.10%	--	9.20%	
China	New Yuan Loans CNY	950.0b	--	825.5b	
China	Money Supply M1 YoY	14.80%	--	15.30%	
China	Money Supply M0 YoY	6.00%	--	6.10%	
Italy	Unemployment Rate Quarterly	11.30%	--	11.60%	11:00
United Kingdom	CPI YoY	2.80%	--	2.60%	11:30
United Kingdom	CPI MoM	0.50%	--	-0.10%	11:30
United Kingdom	CPI Core YoY	2.50%	--	2.40%	11:30
United Kingdom	PPI Output NSA MoM	0.10%	--	0.10%	11:30
United Kingdom	PPI Output NSA YoY	3.10%	--	3.20%	11:30
United Kingdom	RPI MoM	0.50%	--	0.20%	11:30
United Kingdom	RPI YoY	3.70%	--	3.60%	11:30
United Kingdom	Retail Price Index	274.3	--	272.9	11:30
United Kingdom	RPI Ex Mort Int.Payments (YoY)	4.00%	--	3.90%	11:30
United Kingdom	PPI Input NSA YoY	7.30%	--	6.50%	11:30
United Kingdom	PPI Output Core NSA YoY	2.30%	--	2.40%	11:30
United Kingdom	PPI Input NSA MoM	1.30%	--	0.00%	11:30
United States	NFIB Small Business Optimism	104.8	--	105.2	13:00
United States	DOE Short-Term Crude Outlook	--	--	49.58	19:00
United States	DOE Short-Term Ht Oil Outlook	--	--	2.59	19:00

Source: Bloomberg

Banque BEMO sal

Head Office - Private and Corporate Banking

 96 Pasteur Building, Pasteur Street, Medawar Area, P.O. Box: 16-6353, Beirut - Lebanon
 Tel: + 961 1 568 250 Fax: + 961 1 568 266

Investment & Research research@bemobank.com

 Beirut Central District Riad El Solh Square, Esseily Building Bloc A, 7th Floor Beirut - Lebanon
 Tel: + 961 1 992 600 Fax: + 961 1 983 368
www.bemobank.com

Disclaimer:

This report is published for information purposes only. The information herein has been compiled from, or based upon sources considered to be reliable (Bloomberg, SeekingAlpha, DailyStar...), but we do not guarantee or assume responsibility for its completeness and accuracy. This document should not be construed as a solicitation to take part in any investment, or as constituting any representation or warranty on our part. This report is not to be relied upon in substitution for the exercise of specialists.

We may not have taken any steps to ensure that the securities referred to in this report are suitable for any particular investor. The investments and services contained or referred to herein are not purported to be exhaustive, any person considering an investment should seek specialist advice on the suitability of an investment.

Nothing in this report constitutes investment, legal, accounting or tax advice, or a representation that any investment or strategy is suitable or appropriate to your individual circumstances, or otherwise constitutes a personal recommendation. Clients understand that it is their responsibility to seek legal and/or tax advice regarding the legal and tax consequences of their investment transactions. The consequences of any action taken on the basis of information contained herein are solely the responsibility of the recipient.

Investment instruments are subject to risk, including possible loss of principal amount invested. Past performance should not be taken as an indication or guarantee of future performance, and no representation or warranty, express or implied, is made regarding future performance. The value of securities and financial instruments is subject to exchange rate fluctuation that may have a positive or adverse effect on the price or income of such securities or financial instruments. Some investments mentioned in this report may have a high level of volatility. High volatility investments may experience sudden and large falls in their value causing losses when that investment is realized. Some investments may not be readily realizable and it may be difficult to sell or realize those investments, similarly it may prove difficult to obtain reliable information about the value, or risks, to which such an investment is exposed.

This report may provide the addresses of websites or references. We have not reviewed any such site and takes no responsibility for the content contained therein. Such address or reference is provided solely for convenience and information. Accessing such website through this report shall be at the recipients own risk.