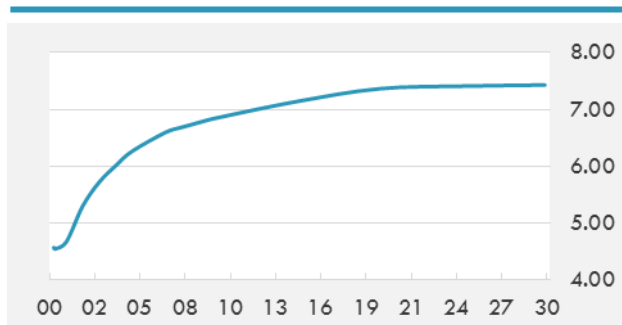


**BEIRUT STOCK EXCHANGE**

	Last	Daily %	YTD %	Dividend %
<b>Development and Reconstruction</b>				
Solidere A	8.04	0.12%	-22.54%	-
Solidere B	8.09	1.38%	-22.95%	-
Solidere GDR	7.6	0.00%	-24.00%	-
<b>Banking</b>				
Audi Listed	6	0.17%	-11.76%	8.35%
BLC Listed	0.99	0.00%	0.00%	0.00%
BOB Listed	18.8	0.00%	0.00%	3.52%
Byblos Listed	1.61	0.00%	-5.29%	8.22%
BEMO Listed	1.64	0.00%	-3.53%	3.41%
BLOM Listed	11.4	0.00%	7.55%	8.61%
<b>Trading</b>				
RYMCO	3.25	0.00%	0.00%	-
<b>Industrial</b>				
Holcim	12.26	0.00%	4.34%	17.68%
Ciments Blancs	1.62	0.00%	3.18%	0.00%

**MSCI LEBANON INDEX - 30 DAYS CHART**

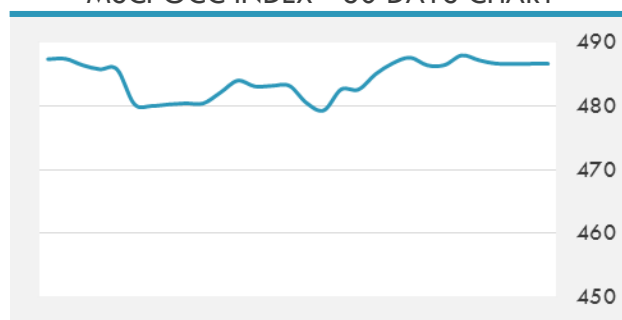
**LEBANESE USD SOVEREIGN CURVE**


- Lebanon has begun reforms to repair its fragile economy after years of paralysis in decision-making but is under pressure to do more to prevent its rising debt spinning out of control.
- Fitch maintained Lebanon's stable outlook thanks to excess liquidity in banks and the election of a president, but warned that high public debt and weak economic performance are among the serious challenges facing the country.

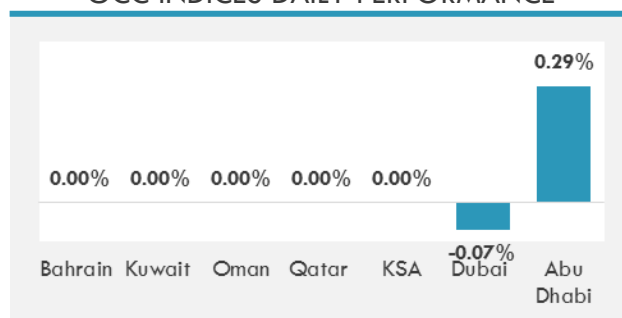
Source: TheDailyStar, GulfBase

**GCC EQUITY INDICES**

	Last Price	Daily %	YTD %
Bahrain	1302.46	0.00%	6.72%
Kuwait	6892.1	0.00%	19.90%
Oman	5052.55	0.00%	-12.63%
Qatar	8800.56	0.00%	-15.68%
KSA	7258.64	0.00%	0.67%
Dubai	3635	-0.07%	2.95%
Abu Dhabi	4481.28	0.29%	-1.43%

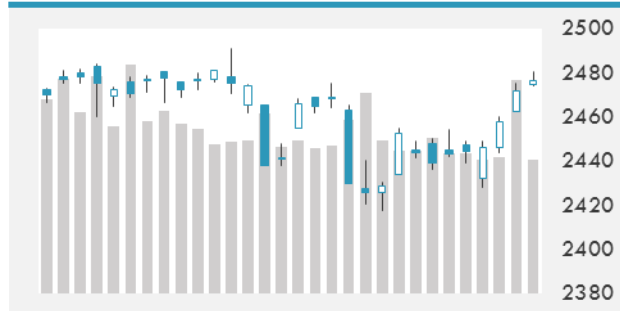
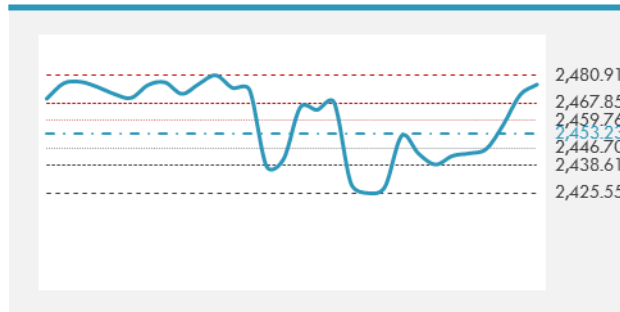
**MSCI GCC INDEX - 30 DAYS CHART**

**LOCAL/GCC FOREIGN EXCHANGE**

	Cross	Last Price
Lebanese Pound Spot	USD/LBP	1506.5
Bahraini Dinar Spot	USD/BHD	0.37705
Kuwaiti Dinar Spot	USD/KWD	0.30161
Omani Rial Spot	USD/OMR	0.38499
Qatari Riyal Spot	USD/QAR	3.6825
Saudi Riyal Spot	USD/SAR	3.7503
UAE Dirham Spot	USD/AED	3.673

**GCC INDICES DAILY PERFORMANCE**


**UNITED STATES EQUITY MARKET INDICES**

	Last Price	Daily %	YTD %	Δ10D Vol
<b>Major Indices</b>				
Dow Jones	21987.56	0.18%	11.26%	0.00%
S&P 500	2476.55	0.20%	10.62%	-0.02%
Nasdaq	6435.331	0.10%	19.55%	-0.20%
<b>Sectors Indices</b>				
Discretionary	715.39	0.46%	10.43%	0.13%
Staples	564.14	0.41%	6.08%	-0.04%
Energy	465.36	0.81%	-16.08%	-0.37%
Financials	410.24	0.44%	6.13%	0.11%
Healthcare	937.49	-0.08%	17.64%	0.37%
Industrials	582.9	0.15%	8.33%	-0.01%
IT	1011.68	-0.05%	25.22%	-0.02%
Materials	346.85	0.63%	11.11%	0.13%
Telecom	156.93	0.05%	-11.14%	-0.83%
Utilities	276.45	-0.30%	12.00%	0.13%
Real Estate	202.82	-0.08%	6.62%	-1.18%

**S&P 500 INDEX - 30 DAYS CHART**

**S&P 500 SUPPORT & RESISTANCE**


- Asian shares fell, posting a second consecutive day of declines, after North Korea's nuclear test on Sunday rattled global equity markets.
- U.S. Markets were closed for Labor Day.
- European stocks fall after rising 0.6% last week, as a North Korea nuclear test on Sunday triggered a fresh round of geopolitical tensions.

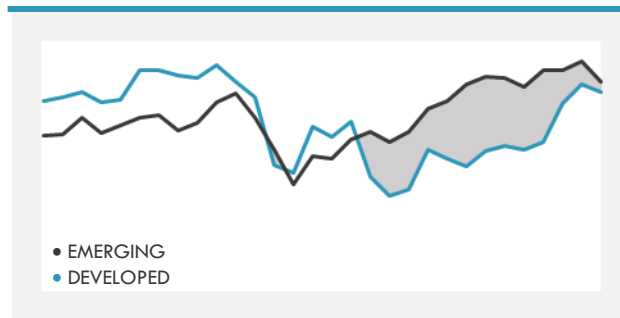
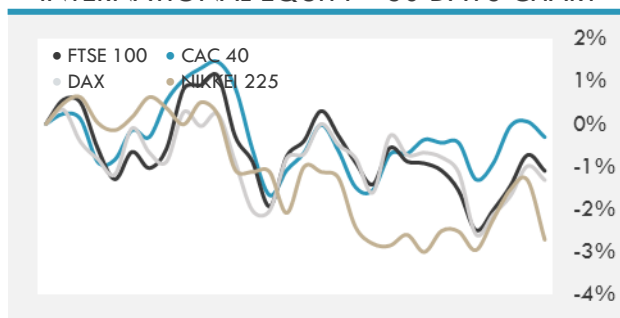
Source: Bloomberg

**INTERNATIONAL MARKETS INDICES**

	Last Price	Daily %	YTD %	Δ10D Vol
World	1173.1	0.31%	13.78%	0.04%
Developed	1965.79	0.31%	12.25%	0.03%
Emerging	1091.36	0.34%	26.57%	-0.02%
Frontier	2815.87	0.34%	16.44%	-0.01%
Europe	126.96	0.61%	3.64%	0.15%
Latin America	2912.25	1.36%	24.42%	1.05%
Asia Pacific	161.16	0.16%	19.34%	-0.05%

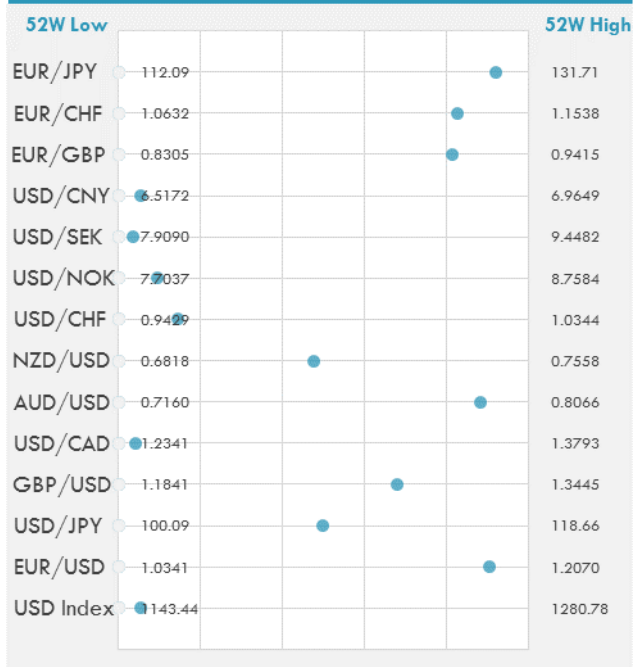
**INTERNATIONAL EQUITY INDICES**

	Last Price	Daily %	YTD %	Δ10D Vol
EuroStoxx 50	3443.88	0.65%	4.66%	0.03%
FTSE 100	7438.5	0.11%	4.14%	-1.67%
CAC 40	5123.26	0.74%	5.37%	0.42%
DAX	12142.64	0.72%	5.76%	-0.14%
Swiss SMI	8941.62	0.18%	8.78%	0.02%
Nikkei 225	19411.67	-1.42%	1.56%	-0.60%
CSI 300	3860.7	0.79%	16.63%	-0.03%

**DEVELOPED VS EMERGING - 30 DAYS CHART**

**INTERNATIONAL EQUITY - 30 DAYS CHART**


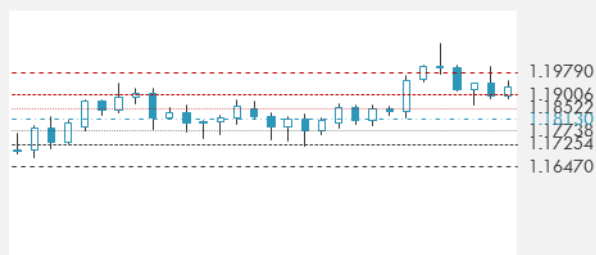
**FOREIGN EXCHANGE MARKET**

	Last Price	Daily %	Δ10D	Vol 25	ΔRR
<b>Major USD Cross Rate</b>					
USD Index	1150.74	-0.18%	-0.19%	-	
EUR/USD	1.1904	0.37%	-0.15%	0.070	
USD/JPY	109.34	-0.83%	-0.32%	-1.173	
GBP/USD	1.2929	-0.17%	-0.27%	-0.268	
USD/CAD	1.24	0.05%	-0.01%	0.113	
AUD/USD	0.796	-0.19%	-0.01%	-0.495	
NZD/USD	0.7169	0.15%	-0.88%	-0.568	
USD/CHF	0.9560	-0.91%	-0.03%	-0.473	
USD/NOK	7.8024	0.04%	-0.29%	0.163	
USD/SEK	7.9619	-0.48%	-0.10%	-0.073	
USD/CNY	6.5413	-0.26%	0.51%	0.200	
<b>Major EUR Cross Rate</b>					
EUR/GBP	0.92065	0.52%	-0.72%	0.215	
EUR/CHF	1.13801	-0.53%	0.06%	-0.283	
EUR/JPY	130.15	-0.46%	0.31%	-0.858	

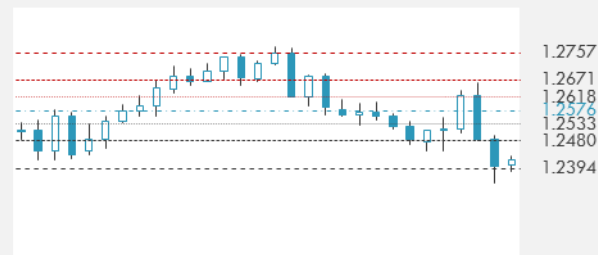
**DISTANCE FROM 52 WEEKS LOW/HIGH**


- The yen rose for a second day after North Korea was said to be preparing to launch an inter-continental ballistic missile before Saturday, spurring demand for safer assets.
- Dollar weakens against most major crosses; Aussie jumps briefly after net exports of GDP and Caixin services PMI beat estimates, pares gain as RBA says higher exchange rate weighing on outlook

Source: Bloomberg

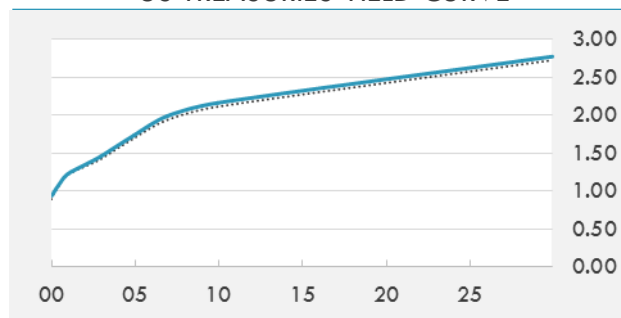
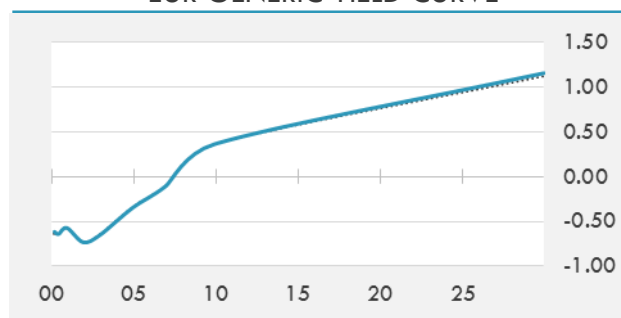
**EUR/USD 30 DAYS SUPPORT & RESISTANCE**

**GBP/USD 30 DAYS SUPPORT & RESISTANCE**

**USD/JPY 30 DAYS SUPPORT & RESISTANCE**

**USD/CAD 30 DAYS SUPPORT & RESISTANCE**


**GLOBAL BOND INDICES**

	Yield	ΔYield (in Bps)
<b>Benchmark Indices</b>		
US 10 Years Benchmark	2.1657	0.049
EU 10 Years Benchmark	0.366	0.005
UK 10 Years Benchmark	1.057	0.023
<b>Sovereign Bonds</b>		
US Treasury Bond	1.8	0.036
Eurozone Sovereign Bond	0.586	0.004
U.K. Sovereign Bond	1.066	0.021
Japan Sovereign Bond	0.077	-0.009
USD Emerging Sovereign Bond	4.348	-0.047
<b>Corporate Bonds</b>		
US Investment Grade Bond	3.108	0.032
US High Yield Bond	5.618	-0.052
EUR Investment Grade Bond	0.602	-0.004
EUR High Yield Bond	2.057	0.037
USD Emerging Market IG & HY	4.526	0.009

**US TREASURIES YIELD CURVE**

**EUR GENERIC YIELD CURVE**


- Treasury 10-year futures contracts climb early Monday in Asia as North Korean nuclear test spurs haven bid.
- Bund futures opened higher in a broad risk-off move after North Korea's overnight missile launch. Despite this, curved edged steeper as the long-end remained under pressure by the large duration supply due this week.

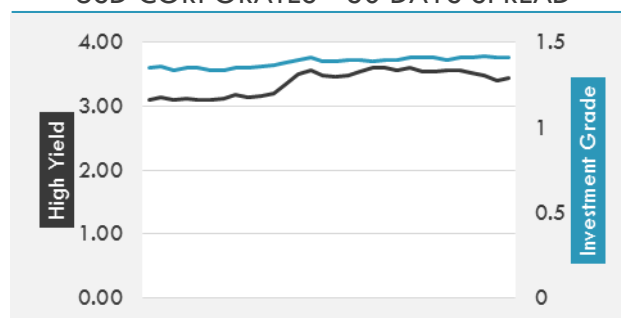
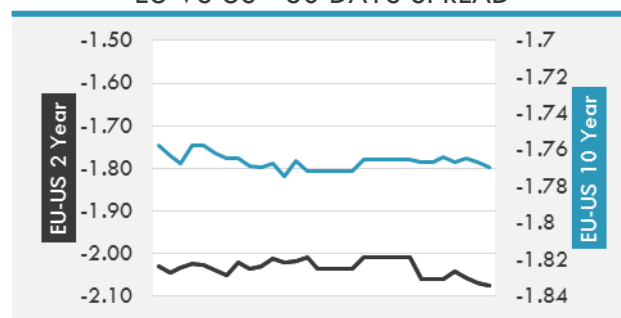
Source: Bloomberg

**OVERNIGHT RATES - SWAPS**

	Yield	ΔYield (in Bps)
3M USD LIBOR	1.31611	-0.0017
3M EUR EURIBOR	-0.329	0.0000
3M GBP LIBOR	0.2765	-0.0009
3Y USD SWAP	1.6185	0.0010
5Y USD SWAP	1.797	0.0355
10Y USD SWAP	2.0825	0.0156
30Y USD SWAP	2.435	0.0549

**FIXED INCOME SPREADS**

	Spread	ΔSpread (in Bps)
USD 3M vs 10Y Spread	1.15064	0.0310
USD 2Y vs 10Y Spread	0.81973	0.0323
USD IG Spread	1.41	(0.0100)
USD HY Spread	3.44	(0.0400)
EU vs US 10Y Spread	-1.7989	(0.0224)
EU vs US 2Y Spread	-2.0753	(0.0180)
EM vs Benchmark Spread	239.2	(1.200)

**USD CORPORATES - 30 DAYS SPREAD**

**EU VS US - 30 DAYS SPREAD**


**GLOBAL COMMODITIES MARKET**

	Last Price	Daily %
Commodity Index	84.98	0.38%

**Energy**

WTI Crude Future	47.29	0.13%
Brent Crude Future	52.75	-0.21%
NYMEX Gasoline	174.79	-1.76%
NYMEX Heat Oil	174.68	0.28%
ICE Gasoil	509.25	1.19%
NYMEX Natural Gas	3.07	0.99%

**Precious Metals**

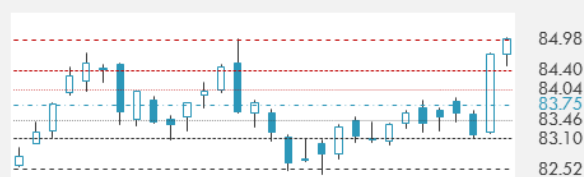
Gold Spot \$/Oz	1325.23	0.29%
Silver Spot \$/Oz	17.73	0.86%
Platinum Spot \$/Oz	1007.55	0.84%
Palladium Spot \$/Oz	982.8	4.73%
Gold Future	1330.4	0.62%
Silver Future	17.816	1.37%
Platinum Future	1009	1.05%
Palladium Future	977.1	4.81%

**Base Metals**

LME Aluminum	2136	0.90%
LME Copper	6835	0.69%
LME Zinc	3185	1.24%
LME Nickel	12035	1.99%
LME Lead	2395	0.04%
LME Tin	20625	-0.22%

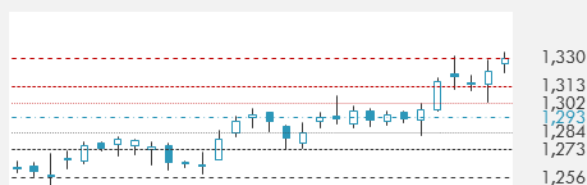
**Agricultural**

Corn CBT	355.25	-0.70%
Wheat CBT	438.75	0.98%
Soybeans CBT	949.5	0.45%
Bean Meal CBT	298.8	-0.23%
Rough Rice CBT	12.945	0.94%
MDE Palm Oil	2706	0.00%
Soybean CBT	35.67	1.74%
Coffee ICE	129.05	-0.23%
Sugar #11 ICE	13.75	-4.51%
Cotton #2 ICE	71.88	1.34%
Cocoa ICE	1947	1.09%
Ethanol CME	1.494	0.40%
Lumber CME	374.2	0.65%
Orange Juice ICE	136.5	2.02%
Live Cattle CME	105.15	-0.24%
Feeder Cattle CME	143.55	0.17%
Lean Hogs CME	61.45	0.08%

**COMMODITY INDEX SUPPORT & RESISTANCE**

**WTI OIL 30 DAYS SUPPORT & RESISTANCE**


- Saudi Arabia, which has led OPEC efforts to curb oil production, also honored its pledge to reduce crude exports as peak seasonal demand draws to a close.
- The yen's underperformance relative to gold may indicate the currency is losing its haven appeal.

Source: Bloomberg

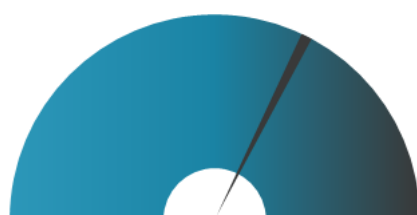
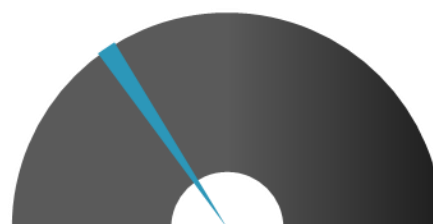
**GOLD 30 DAYS SUPPORT & RESISTANCE**

**SILVER 30 DAYS SUPPORT & RESISTANCE**


**TOP 10 WINNERS**

	Ticker	Last Price	Daily %
<b>S&amp;P 500 Stocks</b>			
CABOT OIL & GAS	COG	26.87	5.17
NAVIENT CORP	NAVI	13.75	4.17
NORDSTROM INC	JWN	46.44	4.08
MARATHON PETROLE	MPC	54.28	3.49
L BRANDS INC	LB	37.46	3.42
CF INDUSTRIES HO	CF	29.98	3.41
CHESAPEAKE ENERG	CHK	3.76	3.3
WYNN RESORTS LTD	WYNN	143.42	3.19
FOOT LOCKER INC	FL	36.34	3.15
TARGET CORP	TGT	56.22	3.1

**TOP 10 LOSERS**

	Ticker	Last Price	Daily %
<b>S&amp;P 500 Stocks</b>			
COOPER COS INC	COO	236.18	-5.84
ELECTRONIC ARTS	EA	119.31	-1.8
PROGRESSIVE CORP	PGR	45.66	-1.76
CAMPBELL SOUP CO	CPB	45.4	-1.73
SBA COMM CORP	SBAC	150.9	-1.73
WEYERHAEUSER CO	WY	32.07	-1.66
EVEREST RE GROUP	RE	248.38	-1.62
PATTERSON COS	PDCO	37.88	-1.61
AMERICAN TOWER C	AMT	145.77	-1.54
CHARTER COMMUN-A	CHTR	392.48	-1.52

**S&P 500 DISTRIBUTION**

**WINNERS**
**LOSERS**
**S&P VOLATILITY INDEX**

**LOW VOLATILITY**
**HIGH VOLATILITY**

- Samsung is the latest company to get the go-ahead to test self-driving cars on California's public roads. In a statement to Reuters, Samsung did not say what precisely what it planned to test in the U.S. but said it secured the permit "in pursuit of a smarter, safer transportation future."
- Amazon is working on plans to roll out its one- and two-hour membership delivery service into Canada later this year, a move that marks a broader push into the country by the retailer, WSJ reports.
- Honda will unveil an electric concept at the Frankfurt auto show that will set a direction for its future EV plans in Europe. The Urban EV concept is expected to be compact or subcompact.
- The National Labor Relations Board files a complaint against Tesla over unfair labor practices, including the use of "overly-broad" confidentiality agreements and coercive tactics toward union organization efforts.
- Demand for Ford's F-Series continues to impress even as other models hit a lull. F-Series sales rose 15% to 77,007 units.
- Microsoft's Windows 10 Fall Creator Update will release on October 17. The free upgrade includes new gaming, security, and accessibility features but most notably includes support for Windows Mixed Reality.
- The Goodyear Tire & Rubber Company has opened its first office in the Silicon Valley to connect with automakers, suppliers and mobility-related startups working on the next generations of vehicles and service models.

**KEY ECONOMIC INDICATORS**

Country	Event	Surv(M)	Actual	Prior	Time
China	Caixin China PMI Composite	--	52.4	51.9	4:45
China	Caixin China PMI Services	--	52.7	51.5	4:45
Eurozone	Markit Eurozone Composite PMI	55.8	--	55.8	11:00
France	Markit France Services PMI	55.5	--	55.5	10:50
France	Markit France Composite PMI	55.6	--	55.6	10:50
Germany	Markit Germany Services PMI	53.4	--	53.4	10:55
Germany	Markit/BME Germany Composite PMI	55.7	--	55.7	10:55
Italy	Markit/ADACI Italy Services PMI	55.5	--	56.3	10:45
Italy	Markit/ADACI Italy Composite PMI	55.8	--	56.2	10:45
Japan	Nikkei Japan PMI Services	--	51.6	52	3:30
Japan	Nikkei Japan PMI Composite	--	51.9	51.8	3:30
Qatar	M1 Money Supply YoY	--	--	0.14%	
Qatar	M2 Money Supply YoY	--	--	7.75%	
Russia	CPI YoY	3.70%	--	3.90%	
Russia	CPI Core MoM	0.10%	--	0.10%	
Russia	Markit Russia PMI Services	53.9	54.2	52.6	9:00
Russia	Markit Russia PMI Composite	--	54.2	53.4	9:00
United States	Durable Goods Orders	1.00%	--	-6.80%	17:00
United States	Factory Orders	-3.30%	--	3.00%	17:00
United States	Durables Ex Transportation	--	--	0.50%	17:00

Source: Bloomberg

## Banque BEMO sal

### Head Office - Private and Corporate Banking

 96 Pasteur Building, Pasteur Street, Medawar Area, P.O. Box: 16-6353, Beirut - Lebanon  
 Tel: + 961 1 568 250 Fax: + 961 1 568 266

### Investment & Research [research@bemobank.com](mailto:research@bemobank.com)

 Beirut Central District Riad El Solh Square, Esseily Building Bloc A, 7th Floor Beirut - Lebanon  
 Tel: + 961 1 992 600 Fax: + 961 1 983 368  
[www.bemobank.com](http://www.bemobank.com)

#### Disclaimer:

This report is published for information purposes only. The information herein has been compiled from, or based upon sources considered to be reliable (Bloomberg, SeekingAlpha, DailyStar...), but we do not guarantee or assume responsibility for its completeness and accuracy. This document should not be construed as a solicitation to take part in any investment, or as constituting any representation or warranty on our part. This report is not to be relied upon in substitution for the exercise of specialists.

We may not have taken any steps to ensure that the securities referred to in this report are suitable for any particular investor. The investments and services contained or referred to herein are not purported to be exhaustive, any person considering an investment should seek specialist advice on the suitability of an investment.

Nothing in this report constitutes investment, legal, accounting or tax advice, or a representation that any investment or strategy is suitable or appropriate to your individual circumstances, or otherwise constitutes a personal recommendation. Clients understand that it is their responsibility to seek legal and/or tax advice regarding the legal and tax consequences of their investment transactions. The consequences of any action taken on the basis of information contained herein are solely the responsibility of the recipient.

Investment instruments are subject to risk, including possible loss of principal amount invested. Past performance should not be taken as an indication or guarantee of future performance, and no representation or warranty, express or implied, is made regarding future performance. The value of securities and financial instruments is subject to exchange rate fluctuation that may have a positive or adverse effect on the price or income of such securities or financial instruments. Some investments mentioned in this report may have a high level of volatility. High volatility investments may experience sudden and large falls in their value causing losses when that investment is realized. Some investments may not be readily realizable and it may be difficult to sell or realize those investments, similarly it may prove difficult to obtain reliable information about the value, or risks, to which such an investment is exposed.

This report may provide the addresses of websites or references. We have not reviewed any such site and takes no responsibility for the content contained therein. Such address or reference is provided solely for convenience and information. Accessing such website through this report shall be at the recipients own risk.