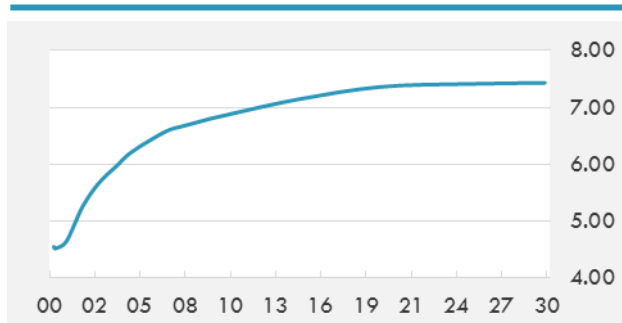


**BEIRUT STOCK EXCHANGE**

	Last	Daily %	YTD %	Dividend %
<b>Development and Reconstruction</b>				
Solidere A	8.16	-0.24%	-21.39%	
Solidere B	7.88	-1.50%	-24.95%	#VALUE!
Solidere GDR	7.6	0.00%	-24.00%	#VALUE!
<b>Banking</b>				
Audi Listed	5.95	-0.34%	-12.50%	8.38%
BLC Listed	0.93	0.00%	-6.06%	0.00%
BOB Listed	18.8	0.00%	0.00%	3.52%
Byblos Listed	1.6	0.00%	-5.88%	8.27%
BEMO Listed	1.55	0.00%	-8.82%	3.41%
BLOM Listed	11.5	0.00%	8.49%	8.61%
<b>Trading</b>				
RYMCO	3.25	0.00%	0.00%	
<b>Industrial</b>				
Holcim	12.51	-7.33%	6.47%	19.08%
Ciments Blancs	1.82	0.00%	15.92%	0.00%

**MSCI LEBANON INDEX - 30 DAYS CHART**

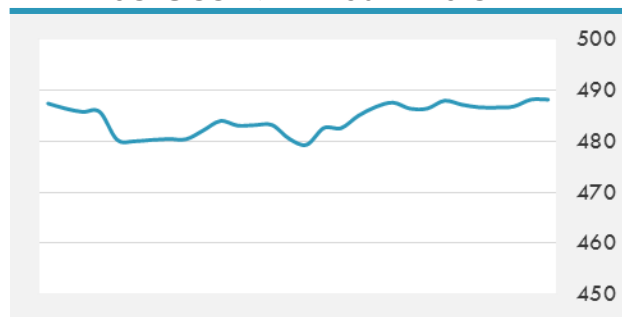
**LEBANESE USD SOVEREIGN CURVE**


- Lebanon's private sector has not yet seen a glimmer of hope as the recent BLOM PMI showed that operating environment for businesses deteriorated in August 2017.
- A new survey showed that wholesale activity in the second quarter of 2017 continued to drop due to the decline of the purchasing power of Lebanese households.
- Oman is investing heavily in its tourism and hospitality sector, as the sultanate aims to host seven million tourists by 2040, including 2.7 million in capital Muscat, according to a real estate expert.

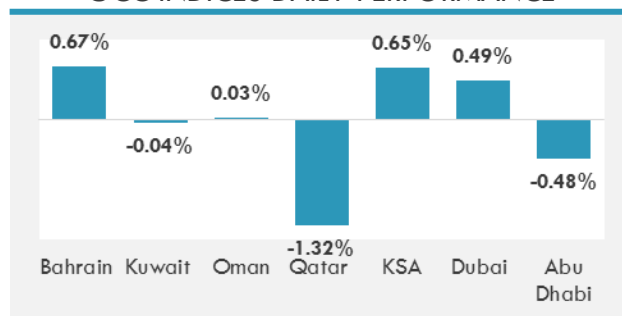
Source: TheDailyStar, GulfBase

**GCC EQUITY INDICES**

	Last Price	Daily %	YTD %
Bahrain	1311.16	0.67%	7.43%
Kuwait	6918	-0.04%	20.22%
Oman	5064.58	0.03%	-12.57%
Qatar	8684.55	-1.32%	-16.71%
KSA	7306.12	0.65%	1.33%
Dubai	3642.08	0.49%	3.11%
Abu Dhabi	4457.12	-0.48%	-1.77%

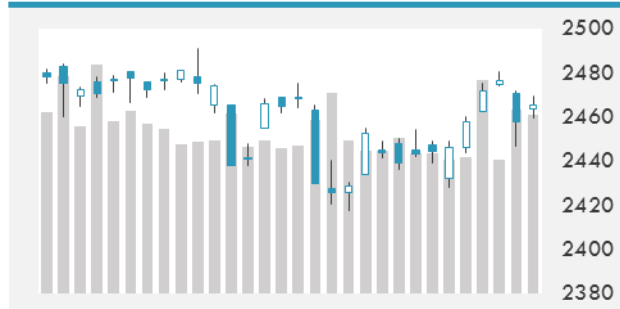
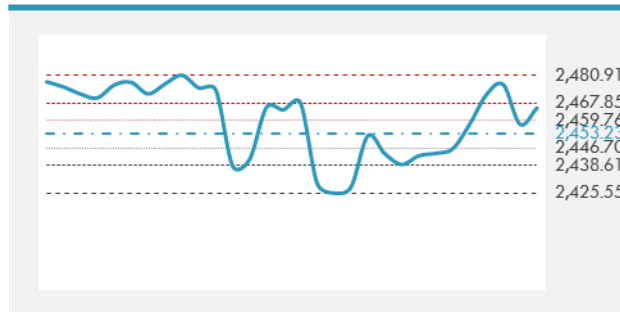
**MSCI GCC INDEX - 30 DAYS CHART**

**LOCAL/GCC FOREIGN EXCHANGE**

	Cross	Last Price
Lebanese Pound Spot	USD/LBP	1506.5
Bahraini Dinar Spot	USD/BHD	0.37707
Kuwaiti Dinar Spot	USD/KWD	0.3015
Omani Rial Spot	USD/OMR	0.38502
Qatari Riyal Spot	USD/QAR	3.685
Saudi Riyal Spot	USD/SAR	3.7503
UAE Dirham Spot	USD/AED	3.673

**GCC INDICES DAILY PERFORMANCE**


**UNITED STATES EQUITY MARKET INDICES**

	Last Price	Daily %	YTD %	Δ10D Vol
<b>Major Indices</b>				
Dow Jones	21807.64	0.25%	10.35%	-0.12%
S&P 500	2465.54	0.31%	10.13%	-0.25%
Nasdaq	6393.314	0.28%	18.77%	-0.35%
<b>Sectors Indices</b>				
Discretionary	716.39	0.55%	10.59%	-1.60%
Staples	567.17	0.34%	6.65%	0.13%
Energy	475.65	1.64%	-14.22%	3.35%
Financials	402.19	0.24%	4.05%	0.29%
Healthcare	937.62	0.45%	17.66%	-1.48%
Industrials	577.19	0.11%	7.27%	-1.46%
IT	1004.51	0.18%	24.33%	-0.17%
Materials	342.87	0.28%	9.84%	-0.01%
Telecom	153.22	-1.23%	-13.24%	1.41%
Utilities	275.81	-0.52%	11.74%	0.58%
Real Estate	202.88	0.10%	6.65%	-2.07%

**S&P 500 INDEX - 30 DAYS CHART**

**S&P 500 SUPPORT & RESISTANCE**


- Asian stocks were mixed, giving up some early gains, as investors weighed a U.S. deal that ensures the funding of its government through mid-December against persistent geopolitical tensions.
- U.S. equities climbed Wednesday as energy stocks advanced with crude oil and shares of financial companies reversed some of Tuesday's losses.
- European stocks held steady as carmakers jumped to a seven-week high, offsetting a decline in travel and leisure companies.

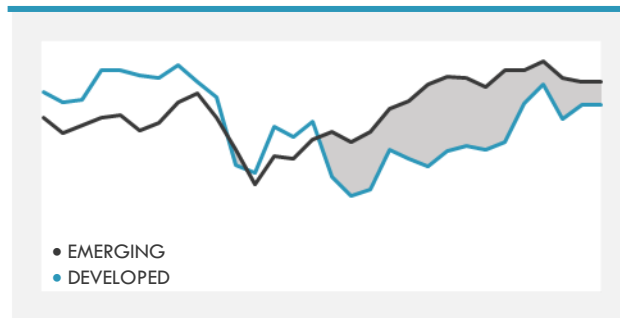
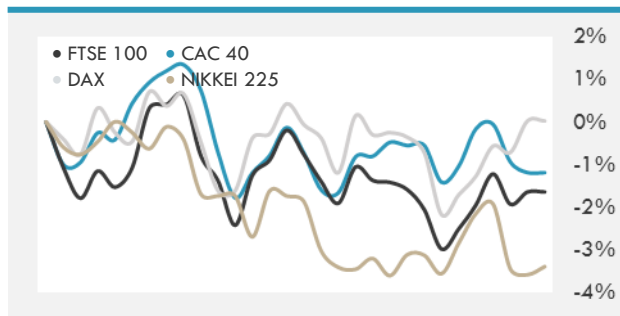
Source: Bloomberg

**INTERNATIONAL MARKETS INDICES**

	Last Price	Daily %	YTD %	Δ10D Vol
World	1168.59	0.18%	13.34%	-0.02%
Developed	1959.15	0.23%	11.87%	-0.09%
Emerging	1083.18	-0.16%	25.62%	-0.70%
Frontier	2830.78	0.01%	17.06%	-0.17%
Europe	126.22	0.08%	3.04%	-0.05%
Latin America	2939.3	1.09%	25.58%	0.12%
Asia Pacific	160.11	-0.24%	18.56%	0.22%

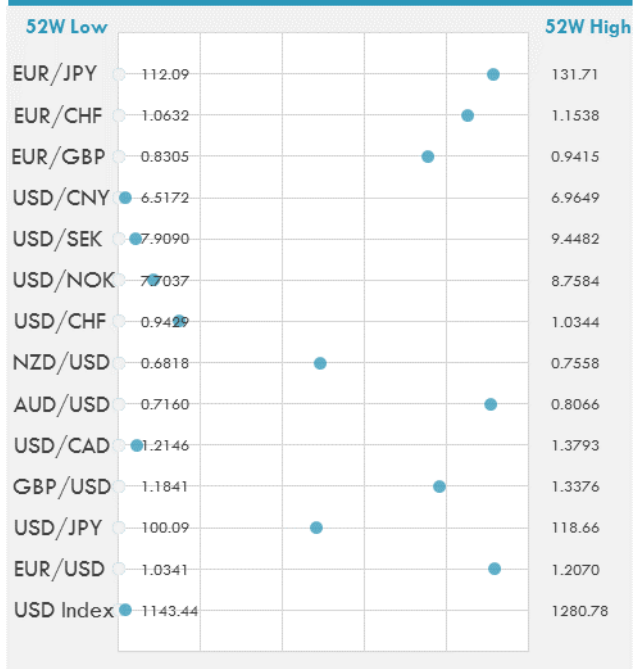
**INTERNATIONAL EQUITY INDICES**

	Last Price	Daily %	YTD %	Δ10D Vol
EuroStoxx 50	3433.8	0.38%	4.35%	0.24%
FTSE 100	7354.13	-0.25%	2.96%	0.10%
CAC 40	5101.41	0.29%	4.92%	0.21%
DAX	12214.54	0.75%	6.39%	0.84%
Swiss SMI	8859.47	-0.11%	7.78%	-0.01%
Nikkei 225	19396.52	0.20%	1.48%	-0.24%
CSI 300	3839.12	-0.27%	15.98%	-0.77%

**DEVELOPED VS EMERGING - 30 DAYS CHART**

**INTERNATIONAL EQUITY - 30 DAYS CHART**


**FOREIGN EXCHANGE MARKET**

	Last Price	Daily %	Δ10D	Vol 25	ΔRR
<b>Major USD Cross Rate</b>					
USD Index	1145.69	-0.08%	-1.34%	-	
EUR/USD	1.1923	0.05%	-2.28%	0.328	
USD/JPY	109.05	-0.16%	-0.02%	-1.288	
GBP/USD	1.3042	-0.01%	-0.58%	-0.263	
USD/CAD	1.2221	-0.04%	0.06%	0.165	
AUD/USD	0.7982	-0.22%	0.12%	-0.490	
NZD/USD	0.7182	-0.25%	-0.29%	-0.555	
USD/CHF	0.9563	-0.04%	-1.29%	-0.695	
USD/NOK	7.7922	-0.14%	-2.62%	-0.053	
USD/SEK	7.9705	-0.12%	-2.94%	-0.063	
USD/CNY	6.5238	-0.01%	0.21%	0.600	
<b>Major EUR Cross Rate</b>					
EUR/GBP	0.91417	0.05%	-0.53%	0.275	
EUR/CHF	1.14024	0.03%	0.00%	-0.268	
EUR/JPY	130.02	-0.11%	-1.71%	-0.878	

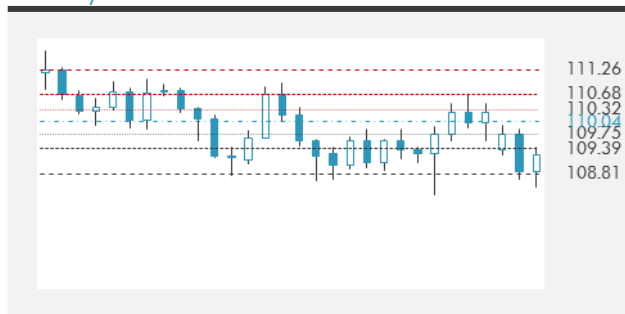
**DISTANCE FROM 52 WEEKS LOW/HIGH**


- The dollar fell against most of its Group-of-10 peers as tensions surrounding North Korea outweighed positive sentiment arising from an extension of the U.S. debt limit.
- The dollar dropped to a session low as the Canadian dollar surged to a two-year high versus its U.S. counterpart after the Bank of Canada raised interest rates by 25bps, about a month earlier than markets were expecting.
- The euro traded stronger for a third day on the back of dovish rhetoric from Federal Reserve policy makers and bullish options trades before the European Central Bank's meeting.

Source: Bloomberg

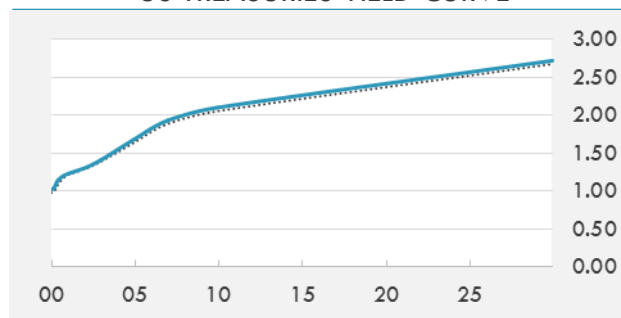
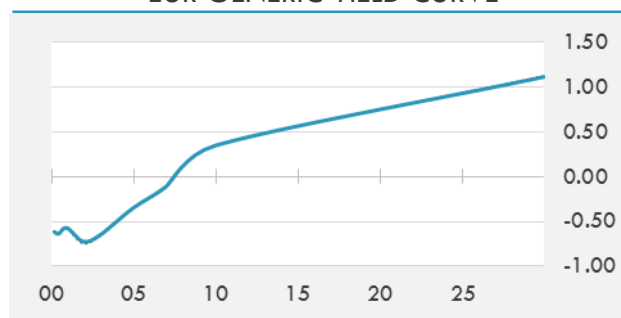
**EUR/USD 30 DAYS SUPPORT & RESISTANCE**

**GBP/USD 30 DAYS SUPPORT & RESISTANCE**

**USD/JPY 30 DAYS SUPPORT & RESISTANCE**

**USD/CAD 30 DAYS SUPPORT & RESISTANCE**


**GLOBAL BOND INDICES**

	Yield	ΔYield (in Bps)
<b>Benchmark Indices</b>		
US 10 Years Benchmark	2.1046	0.045
EU 10 Years Benchmark	0.347	0.009
UK 10 Years Benchmark	1.005	-0.021
<b>Sovereign Bonds</b>		
US Treasury Bond	1.757	0.028
Eurozone Sovereign Bond	0.58	0.018
U.K. Sovereign Bond	1.025	-0.002
Japan Sovereign Bond	0.078	-0.004
USD Emerging Sovereign Bond	4.311	0.011
<b>Corporate Bonds</b>		
US Investment Grade Bond	3.078	0.036
US High Yield Bond	5.603	-0.033
EUR Investment Grade Bond	0.604	0.022
EUR High Yield Bond	2.074	0.093
USD Emerging Market IG & HY	4.488	0.009

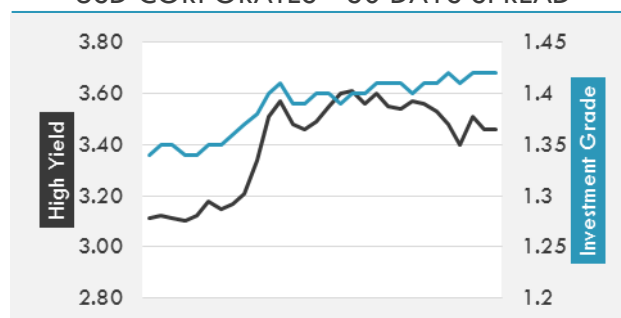
**US TREASURIES YIELD CURVE**

**EUR GENERIC YIELD CURVE**


- Treasuries sold off in afternoon session after reports of President Trump siding with Democrats to agree on a three-month debt-limit extension, while T-Bill curve steepened in response, from October maturities out to December tenors.
- Bunds futures edged lower, with the front-end of the curve under pressure as Euribors unwound Tuesday's risk-off bull flattening. Downside via options was back in vogue ahead of the ECB meeting, peripherals widening supported by supply concession ahead of auctions.

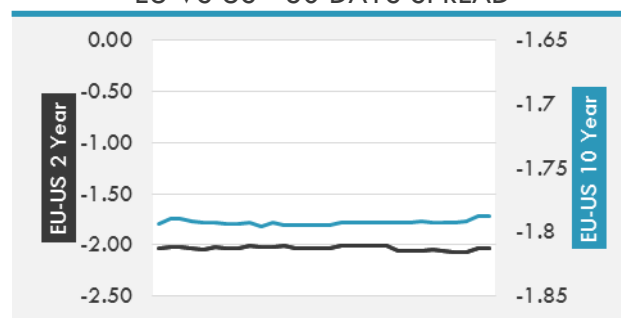
Source: Bloomberg

**OVERNIGHT RATES - SWAPS**

	Yield	ΔYield (in Bps)
3M USD LIBOR	1.31722	0.0000
3M EUR EURIBOR	-0.329	0.0000
3M GBP LIBOR	0.27781	0.0000
3Y USD SWAP	1.6149	0.0347
5Y USD SWAP	1.7571	0.0461
10Y USD SWAP	2.0658	0.0554
30Y USD SWAP	2.3849	0.0556

**USD CORPORATES - 30 DAYS SPREAD**

**FIXED INCOME SPREADS**

	Spread	ΔSpread (in Bps)
USD 3M vs 10Y Spread	1.03975	(0.0035)
USD 2Y vs 10Y Spread	0.79854	0.0330
USD IG Spread	1.42	-
USD HY Spread	3.46	(0.0500)
EU vs US 10Y Spread	-1.7226	0.0490
EU vs US 2Y Spread	-2.0276	0.0375
EM vs Benchmark Spread	240.7	(1.700)

**EU VS US - 30 DAYS SPREAD**


**GLOBAL COMMODITIES MARKET**

	Last Price	Daily %
Commodity Index	85.72	0.42%

**Energy**

WTI Crude Future	49.16	1.03%
Brent Crude Future	54.2	1.54%
NYMEX Gasoline	167.33	-1.52%
NYMEX Heat Oil	175.95	0.66%
ICE Gasoil	520	0.92%
NYMEX Natural Gas	3	0.94%

**Precious Metals**

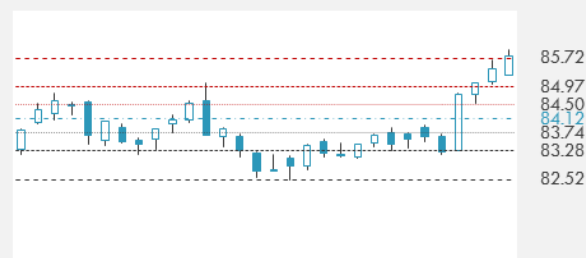
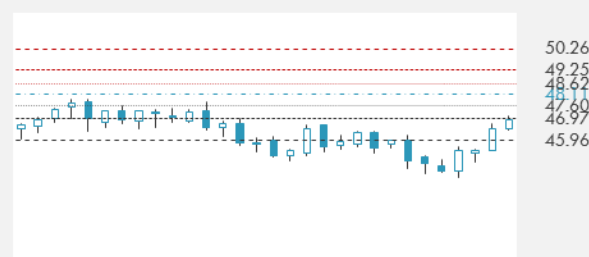
Gold Spot \$/Oz	1334.22	-0.41%
Silver Spot \$/Oz	17.8793	-0.04%
Platinum Spot \$/Oz	1004.03	-0.22%
Palladium Spot \$/Oz	943.06	-1.80%
Gold Future	1339	-0.41%
Silver Future	17.91	-0.17%
Platinum Future	1007.1	-0.19%
Palladium Future	931.9	-2.62%

**Base Metals**

LME Aluminum	2105	0.41%
LME Copper	6901	0.01%
LME Zinc	3095	-1.43%
LME Nickel	12165	0.70%
LME Lead	2340	0.26%
LME Tin	20790	0.29%

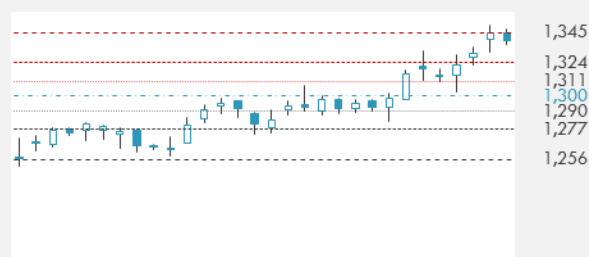
**Agricultural**

Corn CBT	361	0.70%
Wheat CBT	445.75	0.62%
Soybeans CBT	971	0.26%
Bean Meal CBT	308.7	0.23%
Rough Rice CBT	12.72	-0.43%
MDE Palm Oil	2744	-0.83%
Soybean CBT	35.56	0.34%
Coffee ICE	127.9	0.04%
Sugar #11 ICE	14.29	1.85%
Cotton #2 ICE	74.5	-0.51%
Cocoa ICE	1917	-1.49%
Ethanol CME	1.515	0.66%
Lumber CME	379.3	-1.28%
Orange Juice ICE	140.8	-2.90%
Live Cattle CME	104.7	0.26%
Feeder Cattle CME	143.7	0.84%
Lean Hogs CME	63.55	-0.31%

**COMMODITY INDEX SUPPORT & RESISTANCE**

**WTI OIL 30 DAYS SUPPORT & RESISTANCE**


- Oil traded near a four-week high as U.S. refiners return from shut downs caused by Hurricane Harvey and boost crude processing.
- Gold little changed as U.S. President Donald Trump agrees to 3-month debt limit extension.

Source: Bloomberg

**GOLD 30 DAYS SUPPORT & RESISTANCE**

**SILVER 30 DAYS SUPPORT & RESISTANCE**

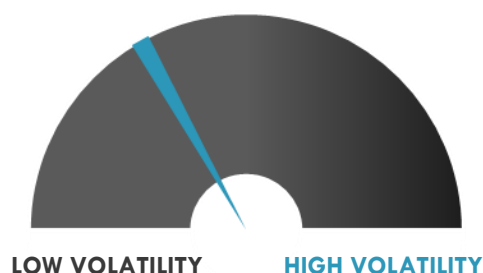

**TOP 10 WINNERS**

	Ticker	Last Price	Daily %
<b>S&amp;P 500 Stocks</b>			
GAP INC/THE	GPS	25.82	7.45
CF INDUSTRIES HO	CF	31.2	7.29
HELMERICH & PAYN	HP	46.35	5.89
MACY'S INC	M	22.17	5.52
KOHL'S CORP	KSS	42.37	4.9
MARATHON OIL	MRO	11.73	3.9
NOBLE ENERGY INC	NBL	25.22	3.53
CSRA INC	CSRA	32.67	3.52
DELTA AIR LI	DAL	47.39	3.38
PATTERSON COS	PDCO	38.89	3.16

**TOP 10 LOSERS**

	Ticker	Last Price	Daily %
<b>S&amp;P 500 Stocks</b>			
ENVISION HEALTHC	EVHC	48.77	-4.24
DARDEN RESTAURAN	DRI	78.36	-3.49
NEWELL BRANDS IN	NWL	47.03	-3.47
MATTEL INC	MAT	15.69	-3.21
CENTURYLINK INC	CTL	19	-2.66
CBS CORP-B	CBS	61.98	-2.61
EXPEDIA INC	EXPE	144.39	-2.18
KIMBERLY-CLARK	KMB	120.31	-2.12
HASBRO INC	HAS	93.66	-1.95
LENNAR CORP-A	LEN	50.05	-1.94

**S&P 500 DISTRIBUTION**

**S&P VOLATILITY INDEX**


- Nissan unveils its new Leaf electric car, with improved range, autonomous driving technology and a \$29K sticker price that undercuts rivals in an attempt to jump-start slowing sales.
- President Trump yesterday revoked the so-called "Dreamer" program that shields young unauthorized immigrants from deportation, giving Congress six months to draft a legal path for amnesty.
- Facebook inflates the number of people who can see the ads on its platform, alleges Pivotal Research analyst Brian Wieser, who maintains a Sell rating on the stock with a year-end \$140 price target.
- Intel's decade-long challenge of a €1.06B (\$1.3B) European Union antitrust fine is referred back to a lower court, which must re-examine the case.
- Royal Dutch Shell opens its first gas station in Mexico, a result of the energy overhaul that ended Pemex' decades-long monopoly.
- Boeing predicts Chinese airlines will buy more than 7,000 planes worth nearly \$1.1T over the next 20 years, as they increase their fleets to meet growing demand for domestic and international travel.
- Toshiba plans to build a new chip factory in Japan's Iwate Prefecture, according to Nikkei Asian Review.
- Intel's Mobileye has made inroads in the Chinese auto market after securing contracts with electric bus maker Yutong and electric car startup Nio, according to Nikkei Asian Review.

**KEY ECONOMIC INDICATORS**

Country	Event	Surv(M)	Actual	Prior	Time
Canada	Building Permits MoM	-1.50%	--	2.50%	15:30
China	Foreign Reserves	\$3095.0b	--	\$3080.7b	
Eurozone	ECB Main Refinancing Rate	0.00%	--	0.00%	14:45
Eurozone	GDP SA QoQ	0.60%	--	0.60%	12:00
Eurozone	GDP SA YoY	2.20%	--	2.20%	12:00
Eurozone	ECB Deposit Facility Rate	-0.40%	--	-0.40%	14:45
Eurozone	ECB Marginal Lending Facility	0.25%	--	0.25%	14:45
Eurozone	ECB Rates Decision and Draghi Briefing				14:45
France	Trade Balance	--	-5968m	-4657m	9:45
Germany	Industrial Production SA MoM	0.50%	0.00%	-1.10%	9:00
Germany	Industrial Production WDA YoY	4.60%	4.00%	2.40%	9:00
Japan	Leading Index CI	105.1	105	105.9	8:00
Qatar	M1 Money Supply YoY	--	--	0.14%	
Qatar	M2 Money Supply YoY	--	--	7.75%	
Qatar	CPI YoY	--	--	0.20%	
United Kingdom	Halifax House Prices MoM	0.20%	--	0.40%	10:30
United Kingdom	Halifax House Price 3Mths/Year	2.10%	--	2.10%	10:30
United States	Initial Jobless Claims	245k	--	236k	15:30
United States	DOE U.S. Crude Oil Inventories	4000k	--	-5392k	18:00
United States	Continuing Claims	1945k	--	1942k	15:30

Source: Bloomberg

**Banque BEMO sal**
**Head Office - Private and Corporate Banking**

 96 Pasteur Building, Pasteur Street, Medawar Area, P.O. Box: 16-6353, Beirut - Lebanon  
 Tel: + 961 1 568 250 Fax: + 961 1 568 266

**Investment & Research** research@bemobank.com

 Beirut Central District Riad El Solh Square, Esseily Building Bloc A, 7th Floor Beirut - Lebanon  
 Tel: + 961 1 992 600 Fax: + 961 1 983 368  
 www.bemobank.com

**Disclaimer:**

This report is published for information purposes only. The information herein has been compiled from, or based upon sources considered to be reliable (Bloomberg, SeekingAlpha, DailyStar...), but we do not guarantee or assume responsibility for its completeness and accuracy. This document should not be construed as a solicitation to take part in any investment, or as constituting any representation or warranty on our part. This report is not to be relied upon in substitution for the exercise of specialists.

We may not have taken any steps to ensure that the securities referred to in this report are suitable for any particular investor. The investments and services contained or referred to herein are not purported to be exhaustive, any person considering an investment should seek specialist advice on the suitability of an investment.

Nothing in this report constitutes investment, legal, accounting or tax advice, or a representation that any investment or strategy is suitable or appropriate to your individual circumstances, or otherwise constitutes a personal recommendation. Clients understand that it is their responsibility to seek legal and/or tax advice regarding the legal and tax consequences of their investment transactions. The consequences of any action taken on the basis of information contained herein are solely the responsibility of the recipient.

Investment instruments are subject to risk, including possible loss of principal amount invested. Past performance should not be taken as an indication or guarantee of future performance, and no representation or warranty, express or implied, is made regarding future performance. The value of securities and financial instruments is subject to exchange rate fluctuation that may have a positive or adverse effect on the price or income of such securities or financial instruments. Some investments mentioned in this report may have a high level of volatility. High volatility investments may experience sudden and large falls in their value causing losses when that investment is realized. Some investments may not be readily realizable and it may be difficult to sell or realize those investments, similarly it may prove difficult to obtain reliable information about the value, or risks, to which such an investment is exposed.

This report may provide the addresses of websites or references. We have not reviewed any such site and takes no responsibility for the content contained therein. Such address or reference is provided solely for convenience and information. Accessing such website through this report shall be at the recipients own risk.