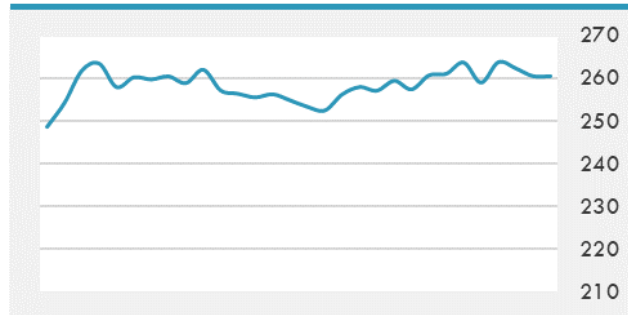
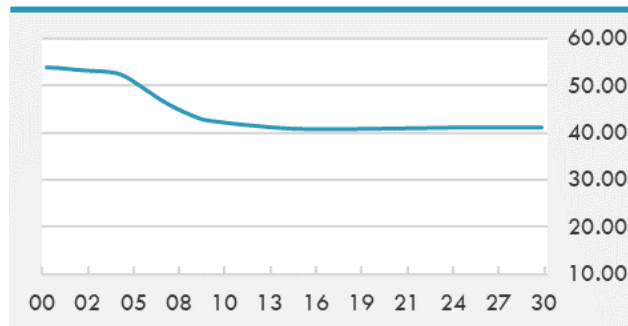


BEIRUT STOCK EXCHANGE

	Last	Daily %	YTD %	Dividend %
MSCI Lebanon	260.5	-0.69%	-3.39%	
Development and Reconstruction				
Solidere A	8.86	-1.34%	21.37%	
Solidere B	8.89	0.79%	21.95%	
Banking				
Audi Listed	1.66	0.00%	-52.57%	34.38%
BLC Listed	0.93	0.00%	0.00%	
BOB Listed	18.8	0.00%	0.00%	4.05%
Byblos Listed	0.85	0.00%	-15.00%	16.51%
BEMO Listed	1.2	0.00%	4.35%	
BLOM Listed	3.9	-2.50%	-44.84%	28.18%
Trading				
RYMCO	3.28	0.00%	0.00%	
Industrial				
Holcim	9.71	0.00%	-0.41%	
Ciments Blancs	2.9	0.00%	11.54%	

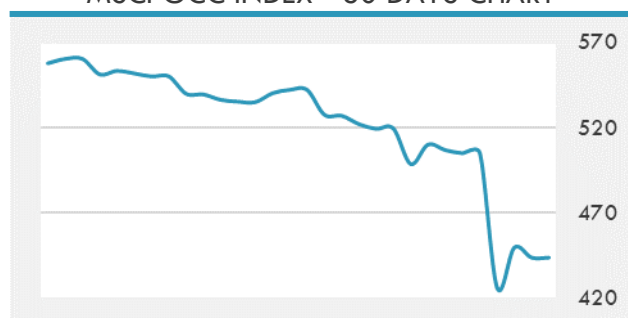
MSCI LEBANON INDEX - 30 DAYS CHART

LEBANESE USD SOVEREIGN CURVE


- The Agricultural Development Fund of Saudi Arabia (ADF) approved agricultural loans worth SAR 600 million to improve the agricultural sector and contribute to food security. The loans include funding to various agricultural projects in several areas in the kingdom, the ADF said in a tweet on Wednesday. Over the course of 2019, the total value of approved loans exceeded SAR 1.89 billion, up 80% from the previous year.

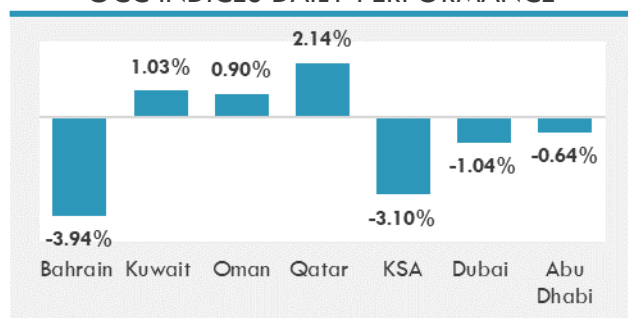
Source: Daily Star, Gulf Business, Mubasher, Bloomberg, Businessnews LB

GCC EQUITY INDICES

	Last Price	Daily %	YTD %
Bahrain	1489.27	-3.94%	-10.92%
Kuwait	4904.61	1.03%	-21.93%
Oman	3832.04	0.90%	-5.35%
Qatar	8613.36	2.14%	-22.41%
KSA	6552.49	-3.10%	-25.81%
Dubai	2207.95	-1.04%	-26.35%
Abu Dhabi	4235.51	-0.64%	-21.60%

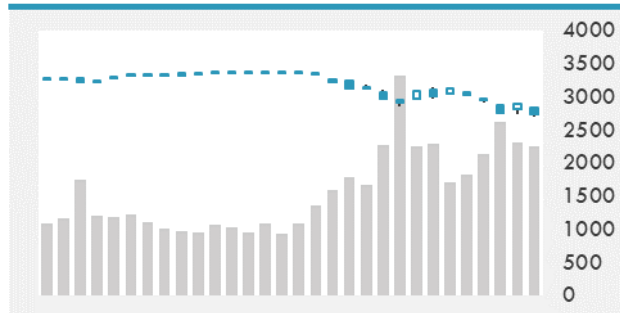
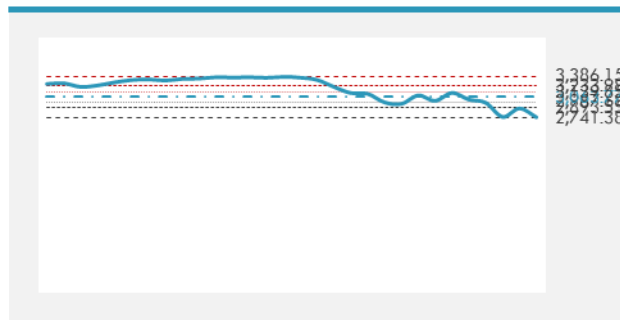
MSCI GCC INDEX - 30 DAYS CHART

LOCAL/GCC FOREIGN EXCHANGE

	Cross	Last Price
Lebanese Pound Spot	USD/LBP	1513.5
Bahraini Dinar Spot	USD/BHD	0.37738
Kuwaiti Dinar Spot	USD/KWD	0.3066
Omani Rial Spot	USD/OMR	0.38487
Qatari Riyal Spot	USD/QAR	3.6707
Saudi Riyal Spot	USD/SAR	3.7556
UAE Dirham Spot	USD/AED	3.673

GCC INDICES DAILY PERFORMANCE


UNITED STATES EQUITY MARKET INDICES

	Last Price	Daily %	YTD %	Δ10D Vol
Major Indices				
Dow Jones	23553.22	-5.86%	-17.47%	2.82%
S&P 500	2741.38	-4.89%	-15.15%	0.86%
Nasdaq	7952.051	-4.70%	-11.37%	0.17%
Sectors Indices				
Discretionary	849.84	-5.36%	-13.83%	2.69%
Staples	591.64	-4.89%	-8.55%	2.02%
Energy	252.77	-5.46%	-44.62%	0.00%
Financials	377.3	-5.52%	-26.22%	1.36%
Healthcare	1064.27	-3.91%	-10.43%	1.07%
Industrials	546.67	-5.95%	-20.50%	3.43%
IT	1463	-4.70%	-9.20%	-1.20%
Materials	300.9	-4.76%	-22.02%	0.18%
Communication Services	158.45	-4.33%	-12.77%	0.51%
Utilities	306.44	-5.10%	-6.68%	0.92%
Real Estate	219.87	-5.44%	-8.51%	-0.35%

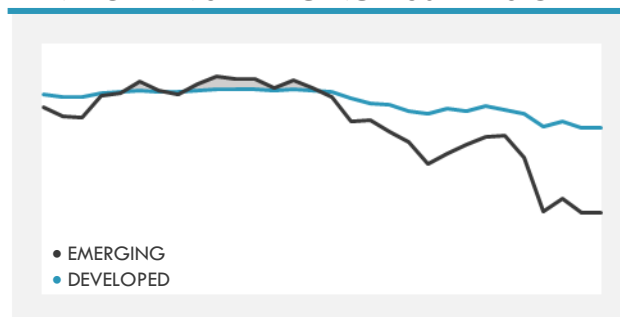
S&P 500 INDEX - 30 DAYS CHART

S&P 500 SUPPORT & RESISTANCE


- U.S. equities fell with the S&P 500 on the edge of confirming bear market territory, on skepticism about President Donald Trump's stimulus plan to combat the coronavirus outbreak.
- European shares ended at a 14-month low on Wednesday after surrendering initial gains made on the Bank of England's stimulus measures, while weakness in markets across the Atlantic also drove losses.

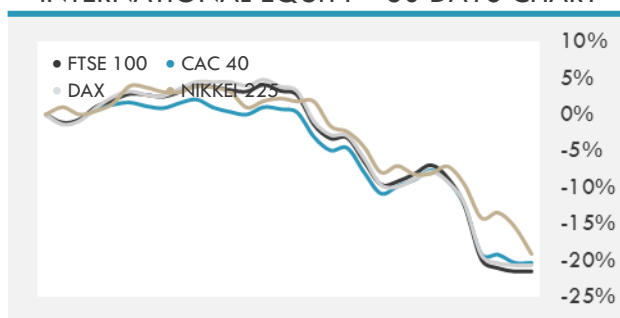
Source: Bloomberg, Financial Times, Reuters

INTERNATIONAL MARKETS INDICES

	Last Price	Daily %	YTD %	Δ10D Vol
World	1156.98	-3.64%	-16.23%	0.50%
Developed	1972.05	-3.89%	-16.38%	0.48%
Emerging	946.62	-1.86%	-15.08%	0.31%
Frontier	2176.81	-1.74%	-20.92%	-0.26%
Europe	1111.51	-0.77%	-20.12%	-0.78%
Latin America	1978.81	-6.32%	-32.18%	2.64%
Asia Pacific	148.1	-1.91%	-13.22%	0.71%

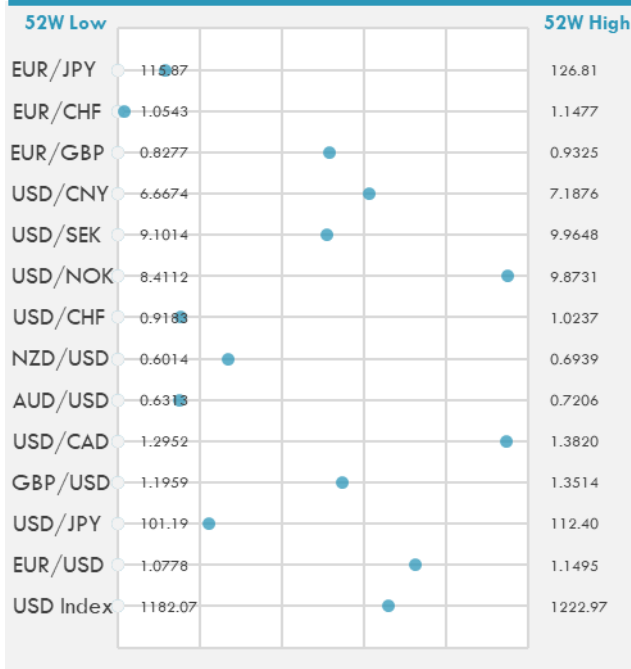
DEVELOPED VS EMERGING - 30 DAYS CHART

INTERNATIONAL EQUITY INDICES

	Last Price	Daily %	YTD %	Δ10D Vol
EuroStoxx 50	2905.56	-0.15%	-22.42%	0.63%
FTSE 100	5876.52	-1.40%	-22.09%	-1.06%
CAC 40	4610.25	-0.57%	-22.88%	0.24%
DAX	10438.68	-0.35%	-21.21%	0.48%
Swiss SMI	9152.5	-0.47%	-13.79%	-0.68%
Nikkei 225	18559.63	-4.41%	-21.55%	0.11%
CSI 300	3950.91	-1.92%	-3.56%	0.61%

INTERNATIONAL EQUITY - 30 DAYS CHART


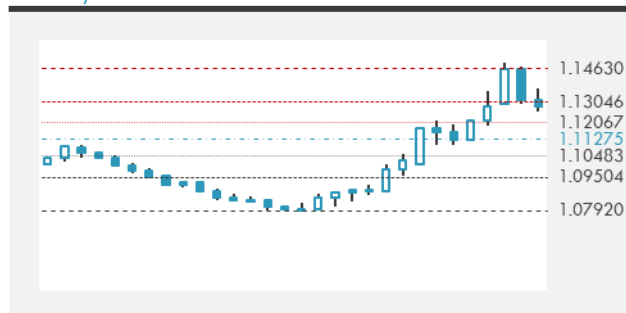
FOREIGN EXCHANGE MARKET

	Last Price	Daily %	Δ10D	Vol 25	ΔRR
Major USD Cross Rate					
USD Index	1209.11	0.14%	0.00%	-	
EUR/USD	1.1297	0.11%	0.02%	2.073	
USD/JPY	103.69	-1.01%	-1.60%	-7.688	
GBP/USD	1.2809	-0.32%	-0.16%	0.403	
USD/CAD	1.3774	0.15%	0.04%	3.148	
AUD/USD	0.6447	-1.00%	-0.04%	-1.815	
NZD/USD	0.6262	-0.54%	-1.22%	-1.553	
USD/CHF	0.9346	-0.49%	-0.10%	-2.593	
USD/NOK	9.8016	1.65%	1.29%	0.728	
USD/SEK	9.5403	0.28%	-0.02%	1.023	
USD/CNY	6.9857	0.37%	0.54%	2.643	
EUR/GBP	0.88188	0.42%	-0.61%	0.665	
EUR/CHF	1.05578	-0.38%	0.27%	-1.093	
EUR/JPY	117.14	-0.90%	-1.74%	-4.715	

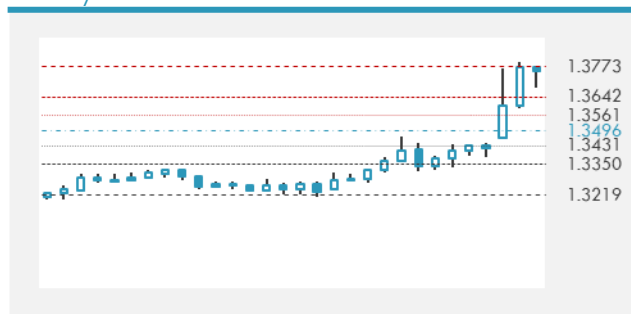
DISTANCE FROM 52 WEEKS LOW/HIGH


- The US dollar resumed its descent against the Japanese yen and Swiss franc on Wednesday as fears over the spreading coronavirus pushed investors into safe havens
- The British pound fell after the British government unveiled a 30 billion pound (\$39 billion) economic stimulus plan, hours after the Bank of England slashed interest rates to lift the struggling economy.
- The Canadian dollar fell as Saudi Arabia intensified its oil price war with Russia, while Prime Minister Justin Trudeau announced fiscal spending to help contain the coronavirus outbreak.

Source: Bloomberg, Financial Times, Reuters

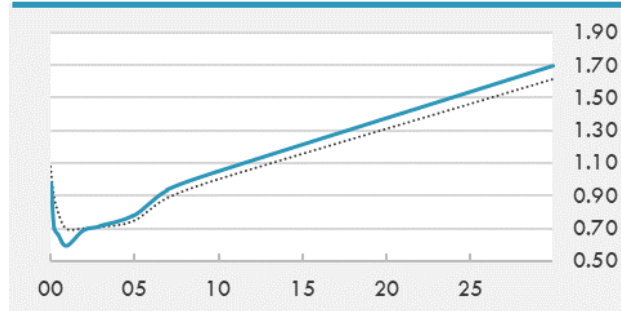
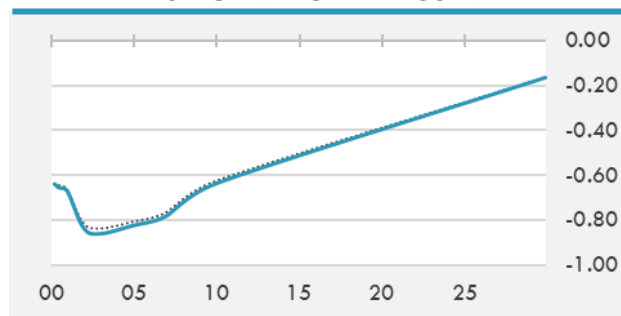
EUR/USD 30 DAYS SUPPORT & RESISTANCE

GBP/USD 30 DAYS SUPPORT & RESISTANCE

USD/JPY 30 DAYS SUPPORT & RESISTANCE

USD/CAD 30 DAYS SUPPORT & RESISTANCE


GLOBAL BOND INDICES

	Yield	ΔYield (in Bps)
Benchmark Indices		
US 10 Years Benchmark	0.8695	0.067
EU 10 Years Benchmark	-0.742	0.048
UK 10 Years Benchmark	0.296	0.056
Sovereign Bonds		
US Treasury Bond	0.845	0.048
Eurozone Sovereign Bond	-0.22	-0.039
Japan Sovereign Bond	-0.227	0.009
Corporate Bonds		
US Corporate TR	2.749	0.154
US High Yield Bond TR	7.438	0.258
EUR Aggregate Corporate TR	0.714	0.039
EUR High Yield TR	5.403	0.313
USD Emerging Market IG & HY	5.366	0.191

US TREASURIES YIELD CURVE

EUR GENERIC YIELD CURVE


- U.S treasury yields rebounded as stocks dropped over uncertainty on how the White House plans to combat the impact of the coronavirus outbreak on the economy. Expectations of a major stimulus plan from the Trump administration boosted Wall Street on Tuesday, following Monday's sell-off as a plunge in oil prices compounded fears of a global recession.
- Italian government bond yields fell sharply from recent highs on Wednesday, on expectations the European Central Bank will boost monetary stimulus when it meets on Thursday to counter the impact of the coronavirus outbreak on the European economy.

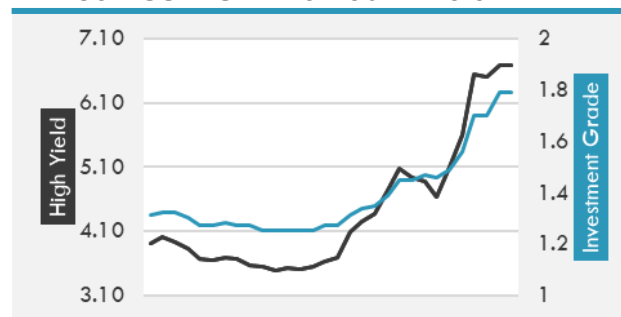
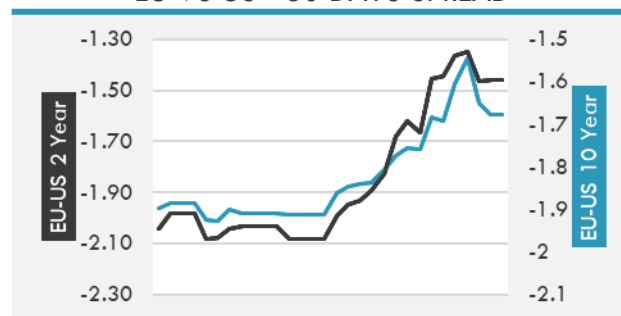
Source: Bloomberg, Financial Times, Economic times, Reuters

OVERNIGHT RATES - SWAPS

	Yield	ΔYield (in Bps)
3M USD LIBOR	0.784	0.000
3M EUR EURIBOR	-0.482	0.000
3M GBP LIBOR	0.534	0.000
3Y USD SWAP	0.514	-0.048
5Y USD SWAP	0.618	-0.021
10Y USD SWAP	0.762	0.033
30Y USD SWAP	0.795	0.029

FIXED INCOME SPREADS

	Spread	ΔSpread (in Bps)
USD 3M vs 10Y Spread	0.447	0.125
USD 2Y vs 10Y Spread	0.342	0.081
USD IG Spread	1.790	0.090
USD HY Spread	6.680	0.180
EU vs US 10Y Spread	-1.596	-0.044
EU vs US 2Y Spread	-1.461	0.000
EM vs Benchmark Spread	359.700	10.200

USD CORPORATES - 30 DAYS SPREAD

EU VS US - 30 DAYS SPREAD


GLOBAL COMMODITIES MARKET

	Last Price	Daily %
Commodity Index	67.09	-1.78%

Energy

WTI Crude Future	31.32	-5.03%
Brent Crude Future	33.93	-5.20%
NYMEX Gasoline	101.99	-8.14%
NYMEX Heat Oil	116.4	-5.98%
ICE Gasoil	357	-5.05%
NYMEX Natural Gas	1.801	-4.10%

Precious Metals

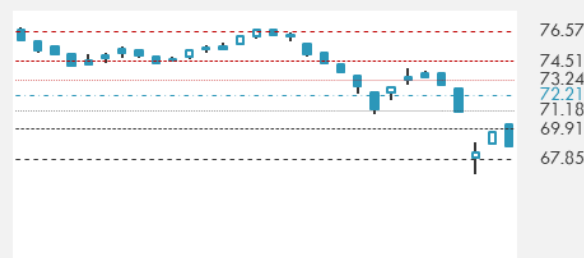
Gold Spot \$/Oz	1636.1	-0.46%
Silver Spot \$/Oz	16.6427	-1.07%
Platinum Spot \$/Oz	859.76	-1.29%
Palladium Spot \$/Oz	2218.27	-4.36%
Gold Future	1636	-0.38%
Silver Future	16.625	-0.90%
Platinum Future	858.4	-1.13%
Palladium Future	2125	-4.68%

Base Metals

LME Aluminum	1675	-1.30%
LME Copper	5529	-0.66%
LME Zinc	1987	0.56%
LME Nickel	12420	-2.05%
LME Lead	1765	-1.67%
LME Tin	16700	-1.04%

Agricultural

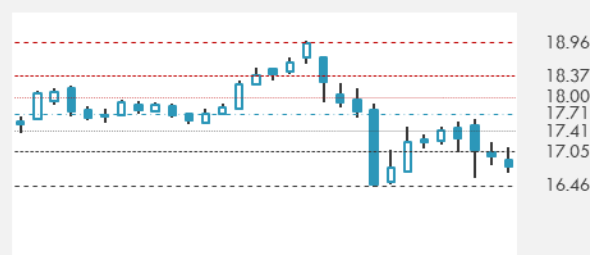
Corn CBT	370.75	-1.00%
Wheat CBT	506	-1.32%
Soybeans CBT	860.25	-1.49%
Bean Meal CBT	299.4	-0.73%
Rough Rice CBT	12.97	-0.08%
MDE Palm Oil	2292	-2.84%
Soybean CBT	26.82	-2.58%
Coffee ICE	112.05	0.00%
Sugar #11 ICE	12.26	0.00%
Cotton #2 ICE	60.91	-1.04%
Cocoa ICE	2625	0.00%
Ethanol CME	1.222	0.00%
Lumber CME	349	0.00%
Orange Juice ICE	97.9	0.00%
Live Cattle CME	97.25	0.00%
Feeder Cattle CME	125.25	0.00%
Lean Hogs CME	78.8	-0.63%

COMMODITY INDEX SUPPORT & RESISTANCE

WTI OIL 30 DAYS SUPPORT & RESISTANCE


- Oil prices fell pressured by U.S. government data reporting domestic crude supplies rose for a seventh week in a row, and by Saudi Arabia's move to increase output capacity.
- Gold prices fell as investors await details on a U.S. fiscal stimulus plan from lawmakers to help limit the expected economic pain from the COVID-19 epidemic.

Source: Bloomberg, Reuters

GOLD 30 DAYS SUPPORT & RESISTANCE

SILVER 30 DAYS SUPPORT & RESISTANCE


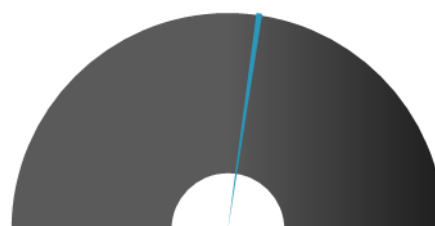
TOP 10 WINNERS

	Ticker	Last Price	Daily %
S&P 500 Stocks			
DIGITAL REALTY	DLR	137	1.90
AON PLC	AON	184.98	1.03
T-MOBILE US INC	TMUS	86.45	1.73
GILEAD SCIENCES	GILD	73.7	1.88
AKAMAI TECHNOLOG	AKAM	87.02	1.01
WILLIS TOWERS WA	WLTW	188.25	0.31
ADV MICRO DEVICE	AMD	45.7	0.71
TAKE-TWO INTERAC	TTWO	119.05	0.25
CITRIX SYSTEMS	CTXS	114.8	0.02
DXC TECHNOLOGY C	DXC	16.43	0.00

TOP 10 LOSERS

	Ticker	Last Price	Daily %
S&P 500 Stocks			
NVR INC	NVR	3411.9	-9.02
BOOKING HOLDINGS	BKNG	1442.5	-7.47
AMAZON.COM INC	AMZN	1820.86	-3.75
ALPHABET INC-C	GOOG	1215.41	-5.08
ALPHABET INC-A	GOOGL	1210.9	-5.04
AUTOZONE INC	AZO	1089.03	-5.16
CHIPOTLE MEXICAN	CMG	646.39	-7.82
METTLER-TOLEDO	MTD	658.65	-6.14
BOEING CO/THE	BA	189.08	-18.15
TRANSDIGM GROUP	TDG	462.17	-6.75

S&P 500 DISTRIBUTION

LOSERS
WINNERS
S&P VOLATILITY INDEX

LOW VOLATILITY
HIGH VOLATILITY

- Delta Air Lines Inc said it was extending the suspension of all flights between the United States and China from April 30 to May 31 due to the coronavirus outbreak.
- Uber Technologies Inc said it may temporarily suspend accounts of riders and drivers who have tested positive for the coronavirus or been exposed to it at the direction of health authorities.
- PepsiCo Inc made its biggest bet in the energy drinks market with a \$3.85 billion deal to buy Rockstar Energy Beverages, opening a new front in its long-running battle with Coca-Cola Co.
- Fiat Chrysler is temporarily halting operations at some plants in Italy and will reduce production rates in response to the coronavirus outbreak in the country, the largest in Europe.
- Boeing is freezing new hiring and overtime except in certain critical areas to preserve cash, the U.S. planemaker's CEO said on Wednesday, as the coronavirus outbreak compounds the fallout from a year-old grounding of its money-spinning 737 MAX.
- Equinor reported the oil industry's first coronavirus infection on an offshore installation on Wednesday, highlighting the challenge in preventing contamination for thousands of workers living in the close quarters on rigs and platforms.
- Canada's Bombardier Inc said Chief Executive Officer Alain Bellemare would step down and be replaced by former company executive and Hydro-Quebec CEO Eric Martel.
- The cost to insure General Electric Co debt has shot up to levels last seen in 2018, possibly reflecting concern about the company's exposure to coronavirus-induced declines in interest rates, air travel and global growth.

KEY ECONOMIC INDICATORS

Country	Event	Surv (M)	Actual	Prior	Time
Eurozone	ECB Main Refinancing Rate	0.00%	--	0.00%	14:45
Eurozone	ECB Deposit Facility Rate	-0.50%	--	-0.50%	14:45
Eurozone	ECB Marginal Lending Facility	0.25%	--	0.25%	14:45
Ireland	CPI EU Harmonized YoY	--	--	1.10%	13:00
Ireland	CPI YoY	--	--	1.30%	13:00
Ireland	CPI EU Harmonized MoM	--	--	-0.70%	13:00
Japan	PPI YoY	1.10%	0.80%	1.70%	01:50
Russia	Gold and Forex Reserve	--	--	570.0b	15:00
United-Kingdom	LME Copper Stocks	--	--	-700	11:00
United-Kingdom	LME Primary Aluminium Stocks	--	--	-7725	11:00
United-States	Initial Jobless Claims	220k	--	216k	14:30
United-States	Net Export Sales Corn-Old Crop	--	--	769.2	14:30
United-States	Net Export Sales Soybeans-Old	--	--	345	14:30
United-States	Net Export Sales Wheat-Old	--	--	542.4	14:30
United-States	Net Export Sales Cotton-Old	--	--	395.5	14:30
United-States	PPI Final Demand MoM	-0.10%	--	0.50%	14:30
United-States	Net Export Sales Corn-Total	--	--	869.2	14:30
United-States	EIA Natural Gas Storage Change	-56	--	-109	16:30
United-States	Net Export Sales Soybeans-Total	--	--	346.4	14:30
United-States	Net Export Sales Wheat-Total	--	--	570.4	14:30
United-States	Continuing Claims	1733k	--	1729k	14:30

Banque BEMO sal
Head Office - Private and Corporate Banking

96 Pasteur Building, Pasteur Street, Medawar Area, P.O. Box: 16-6353, Beirut - Lebanon
Tel: + 961 1 568 250 Fax: + 961 1 568 266

Wealth & Investment Management research@bemobank.com

Beirut Central District Riad El Solh Square, Esseily Building Bloc A, 7th Floor Beirut - Lebanon
Tel: + 961 1 992 600 Fax: + 961 1 983 368
www.bemobank.com

Disclaimer:

This report is published for information purposes only. The information herein has been compiled from, or based upon sources considered to be reliable (Bloomberg, SeekingAlpha, DailyStar...), but we do not guarantee or assume responsibility for its completeness and accuracy. This document should not be construed as a solicitation to take part in any investment, or as constituting any representation or warranty on our part. This report is not to be relied upon in substitution for the exercise of specialists.

We may not have taken any steps to ensure that the securities referred to in this report are suitable for any particular investor. The investments and services contained or referred to herein are not purported to be exhaustive, any person considering an investment should seek specialist advice on the suitability of an investment.

Nothing in this report constitutes investment, legal, accounting or tax advice, or a representation that any investment or strategy is suitable or appropriate to your individual circumstances, or otherwise constitutes a personal recommendation. Clients understand that it is their responsibility to seek legal and/or tax advice regarding the legal and tax consequences of their investment transactions. The consequences of any action taken on the basis of information contained herein are solely the responsibility of the recipient.

Investment instruments are subject to risk, including possible loss of principal amount invested. Past performance should not be taken as an indication or guarantee of future performance, and no representation or warranty, express or implied, is made regarding future performance. The value of securities and financial instruments is subject to exchange rate fluctuation that may have a positive or adverse effect on the price or income of such securities or financial instruments. Some investments mentioned in this report may have a high level of volatility. High volatility investments may experience sudden and large falls in their value causing losses when that investment is realized. Some investments may not be readily realizable and it may be difficult to sell or realize those investments, similarly it may prove difficult to obtain reliable information about the value, or risks, to which such an investment is exposed.

This report may provide the addresses of websites or references. We have not reviewed any such site and takes no responsibility for the content contained therein. Such address or reference is provided solely for convenience and information. Accessing such website through this report shall be at the recipients own risk.