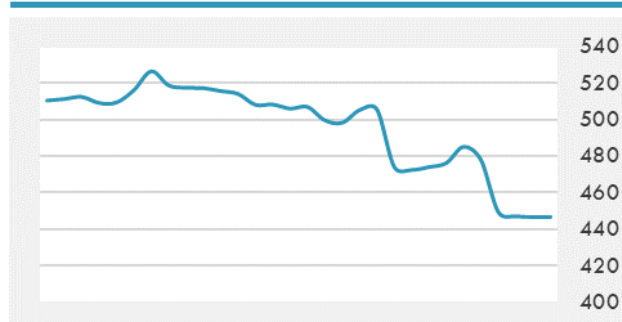
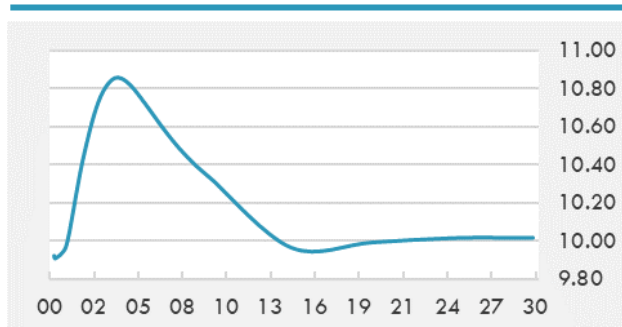


BEIRUT STOCK EXCHANGE

	Last	Daily %	YTD %	Dividend %
MSCI Lebanon	446.95	-0.09%	-17.09%	
Development and Reconstruction				
Solidere A	5	0.60%	-28.57%	
Solidere B	4.96	4.86%	-31.02%	
Banking				
Audi Listed	4.44	-1.99%	-9.39%	12.65%
BLC Listed	0.93	0.00%	0.00%	
BOB Listed	18.8	0.00%	0.00%	4.05%
Byblos Listed	1.26	0.00%	-8.03%	11.14%
BEMO Listed	1.55	0.00%	-1.27%	4.26%
BLOM Listed	8.1	0.00%	-12.43%	13.92%
Trading				
RYMCO	3.28	0.00%	0.00%	
Industrial				
Holcim	14.5	0.00%	-6.45%	17.68%
Ciments Blancs	2.61	0.00%	2.35%	

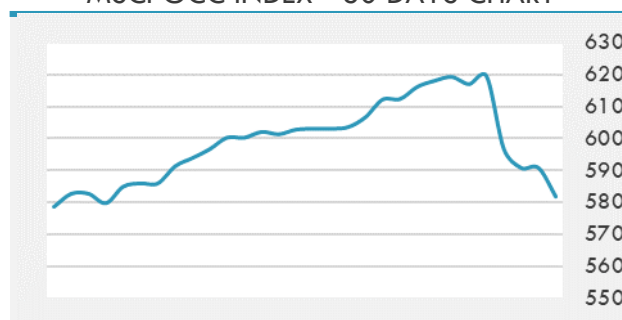
MSCI LEBANON INDEX - 30 DAYS CHART

LEBANESE USD SOVEREIGN CURVE


- The assets of investments funds in Saudi Arabia surged 46 percent YoY to SAR 119.76 billion (\$31.93 billion) during the first quarter of 2019, according to the Saudi Arabian Monetary Authority. Foreign funds' assets jumped to SAR 36.73 billion (\$9.79 billion) in Q1-19 from SAR 25.14 billion (\$6.7 billion) in the year-ago period. Assets of local funds declined by 12.6 percent YoY to SAR 83.03 billion (\$22.14 billion) in the first three months of 2019.
- Total real estate mortgages in Dubai have exceeded AED 52.5 billion (\$14.3 billion) during the first four months of 2019, data by Dubai's Department of Land and Property showed.

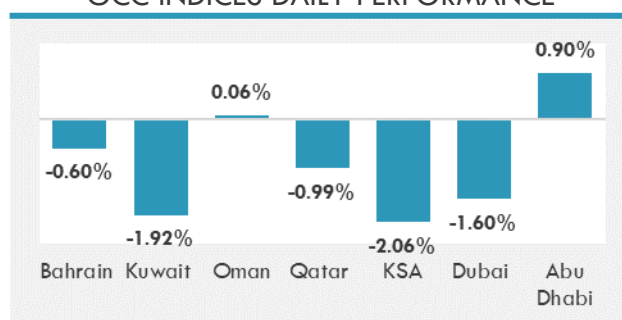
Source: Daily Star, Gulf Business, Mubasher, Bloomberg

GCC EQUITY INDICES

	Last Price	Daily %	YTD %
Bahrain	1436.28	-0.60%	6.76%
Kuwait	5803.2	-1.92%	12.06%
Oman	3865.51	0.06%	-10.60%
Qatar	9928.22	-0.99%	-3.60%
KSA	8674.66	-2.06%	10.83%
Dubai	2629.9	-1.60%	3.96%
Abu Dhabi	5098.3	0.90%	3.73%

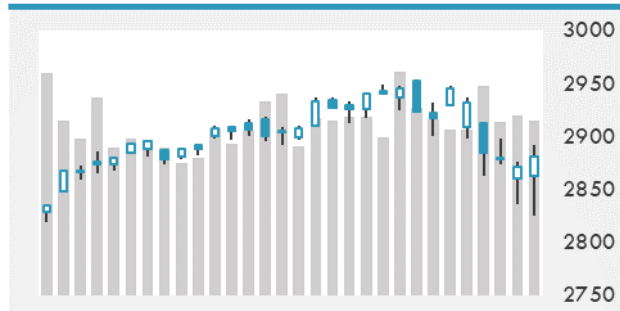
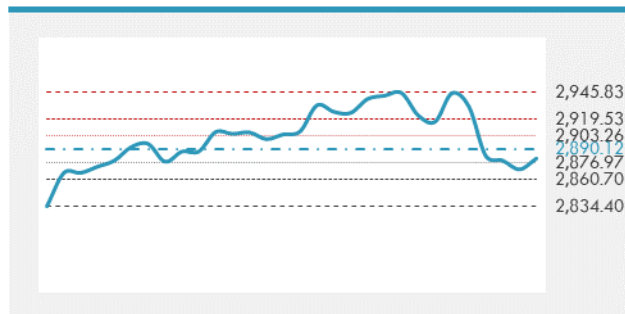
MSCI GCC INDEX - 30 DAYS CHART

LOCAL/GCC FOREIGN EXCHANGE

	Cross	Last Price
Lebanese Pound Spot	USD/LBP	1513.5
Bahraini Dinar Spot	USD/BHD	0.37699
Kuwaiti Dinar Spot	USD/KWD	0.30415
Omani Rial Spot	USD/OMR	0.385
Qatari Riyal Spot	USD/QAR	3.66
Saudi Riyal Spot	USD/SAR	3.7503
UAE Dirham Spot	USD/AED	3.673

GCC INDICES DAILY PERFORMANCE


UNITED STATES EQUITY MARKET INDICES

	Last Price	Daily %	YTD %	Δ10D Vol
Major Indices				
Dow Jones	25942.37	0.44%	11.21%	0.59%
S&P 500	2881.4	0.37%	14.94%	0.36%
Nasdaq	7916.94	0.08%	19.32%	-0.11%
Sectors Indices				
Discretionary	930.20	0.04%	19.03%	0.15%
Staples	588.24	1.17%	12.71%	1.76%
Energy	471.66	0.08%	11.22%	0.24%
Financials	455.03	0.52%	14.93%	-0.93%
Healthcare	1027.08	-0.07%	2.59%	-0.05%
Industrials	641.72	0.38%	18.36%	0.13%
IT	1334.23	0.18%	22.60%	0.20%
Materials	344.74	1.27%	8.88%	2.58%
Com. Services	164.33	0.21%	18.41%	-1.18%
Utilities	293.54	1.73%	9.28%	3.01%
Real Estate	223.35	1.13%	16.11%	0.02%

S&P 500 INDEX - 30 DAYS CHART

S&P 500 SUPPORT & RESISTANCE


- U.S. equities erased losses to end marginally higher after U.S. Treasury Secretary Steven Mnuchin said trade talks between the U.S. and China were “constructive”. President Trump said he was in “absolutely no rush” to finalize a trade agreement with China, after the U.S. increased duties to 25 percent on \$200 billion worth of Chinese goods.
- European equities rose, supported by gains in robust defensive stocks. Japanese stocks gave up early gains to finish lower for a fifth consecutive session. Shares were hit by what seemed to be speculative selling, prompted by the above mentioned U.S. tariff hikes.

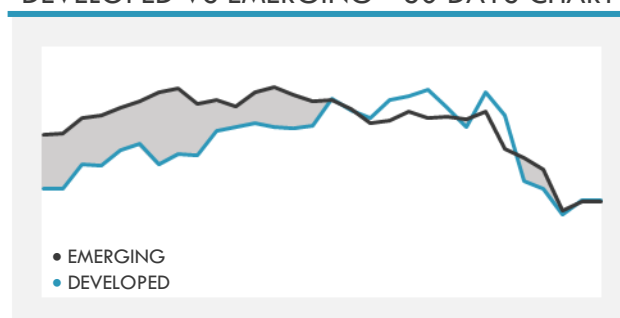
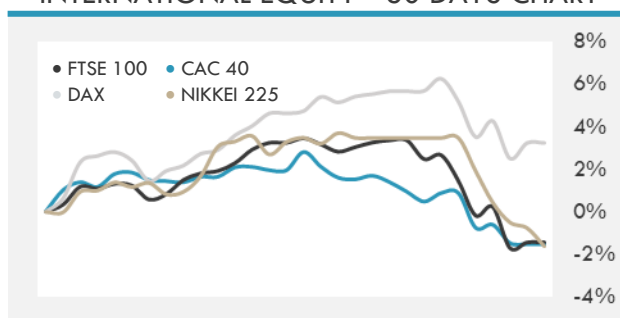
Source: Bloomberg, Financial Times, Reuters

INTERNATIONAL MARKETS INDICES

	Last Price	Daily %	YTD %	Δ10D Vol
World	1248.92	0.35%	12.15%	0.39%
Developed	2126.32	0.33%	12.87%	0.38%
Emerging	1033.44	0.49%	7.01%	0.09%
Frontier	2665.12	0.02%	7.16%	-0.13%
Europe	127.23	0.26%	11.41%	0.30%
Latin America	2656.22	0.00%	3.52%	0.17%
Asia Pacific	157.05	0.24%	7.05%	-0.06%

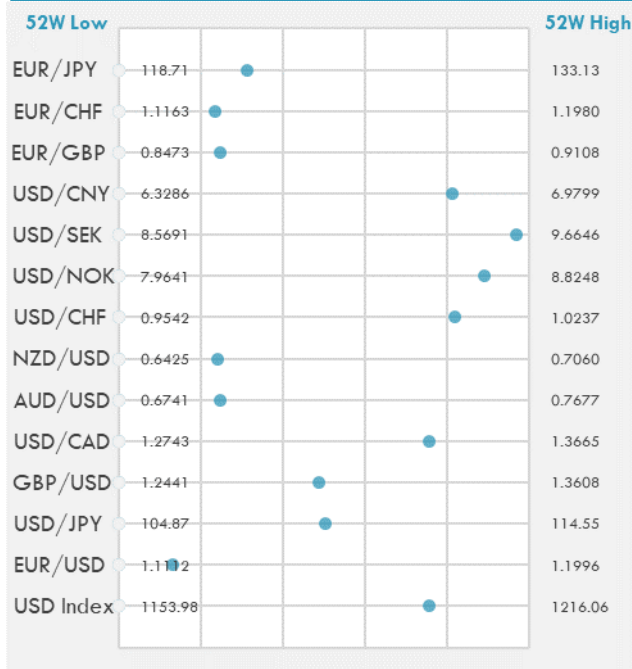
INTERNATIONAL EQUITY INDICES

	Last Price	Daily %	YTD %	Δ10D Vol
EuroStoxx 50	3361.05	0.31%	11.98%	0.36%
FTSE 100	7203.29	-0.06%	7.06%	0.02%
CAC 40	5327.44	0.27%	12.61%	0.10%
DAX	12059.83	0.72%	14.21%	0.72%
Swiss SMI	9472.83	0.45%	12.38%	0.24%
Nikkei 225	21160.24	-0.87%	5.72%	-1.05%
CSI 300	3682.34	-1.29%	22.31%	8.25%

DEVELOPED VS EMERGING - 30 DAYS CHART

INTERNATIONAL EQUITY - 30 DAYS CHART


FOREIGN EXCHANGE MARKET

	Last Price	Daily %	Δ10D	Vol 25	ΔRR
Major USD Cross Rate					
USD Index	1200.99	0.21%	-0.13%	-	
EUR/USD	1.1229	-0.04%	-0.29%	-0.108	
USD/JPY	109.73	-0.20%	0.00%	-1.960	
GBP/USD	1.3011	0.10%	-0.98%	0.253	
USD/CAD	1.344	0.17%	-0.79%	0.235	
AUD/USD	0.6974	-0.40%	0.30%	-0.848	
NZD/USD	0.6579	-0.27%	-0.14%	-0.830	
USD/CHF	1.0112	-0.06%	-0.01%	-0.483	
USD/NOK	8.7323	0.21%	-0.32%	0.363	
USD/SEK	9.6299	0.19%	-0.41%	0.243	
USD/CNY	6.8574	0.46%	0.22%	0.805	
Major EUR Cross Rate					
EUR/GBP	0.86301	-0.11%	-0.54%	-0.265	
EUR/CHF	1.13545	-0.13%	-0.44%	-0.395	
EUR/JPY	123.22	-0.24%	-0.13%	-1.840	

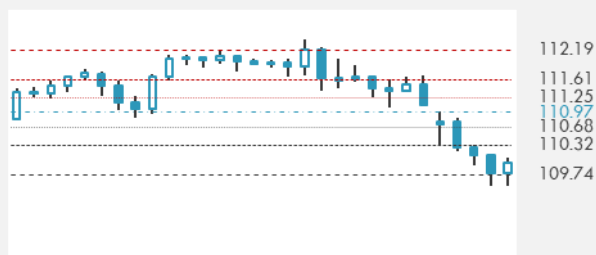
DISTANCE FROM 52 WEEKS LOW/HIGH


- The U.S. dollar fell against its relative peers as hopes for a U.S.-China compromise on trade rose and traders pulled money from safe-haven assets. The Japanese yen and Swiss franc also ticked down as risk aversion slightly abated.
- The euro rose against the U.S. dollar, supported by weakness in the latter and by some speculation that protracted trade negotiations could force the U.S. policymakers to cut interest rates.
- The British pound fell as expectations of a Brexit compromise evaporated. Losses were mitigated by data revealing Britain's economy grew at a quarterly rate of 0.5 percent in Q1-2019.

Source: Bloomberg, Financial Times, Reuters

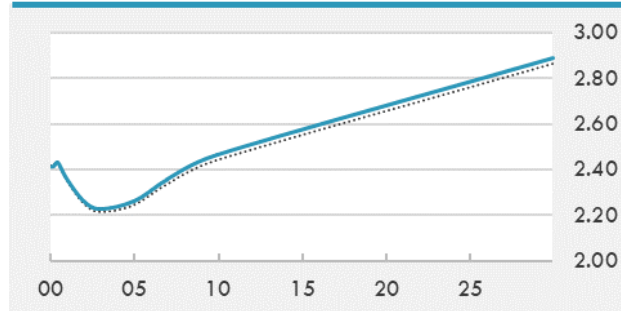
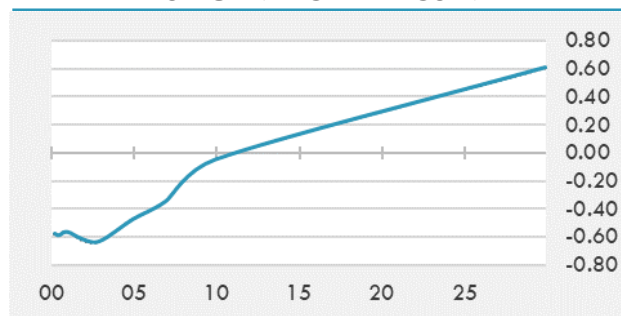
EUR/USD 30 DAYS SUPPORT & RESISTANCE

GBP/USD 30 DAYS SUPPORT & RESISTANCE

USD/JPY 30 DAYS SUPPORT & RESISTANCE

USD/CAD 30 DAYS SUPPORT & RESISTANCE


GLOBAL BOND INDICES

	Yield	ΔYield (in Bps)
Benchmark Indices		
US 10 Years Benchmark	2.4672	0.025
EU 10 Years Benchmark	-0.045	0.002
UK 10 Years Benchmark	1.135	0.010
Sovereign Bonds		
US Treasury Bond	2.38	-0.008
Eurozone Sovereign Bond	0.323	-0.001
Japan Sovereign Bond	-0.149	0.004
Corporate Bonds		
US Corporate TR	3.617	-0.003
US High Yield Bond TR	6.332	0.031
EUR Aggregate Corporate TR	0.766	0.005
EUR High Yield TR	4.214	-0.011
USD Emerging Market IG & HY	5.315	-0.004

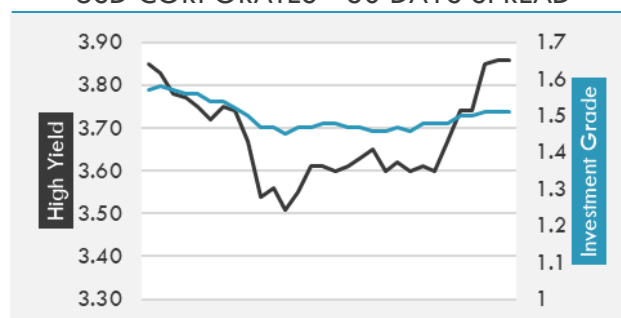
US TREASURIES YIELD CURVE

EUR GENERIC YIELD CURVE


- U.S. Treasury yields were little changed, with longer-dated yields hovering at five-week lows, as worries about trade tension between China and the U.S. simmered down even in the absence of a deal following two-days of negotiations. Data showed domestic inflation remains tame with the consumer price index increasing 0.3 percent in April, reinforcing the notion that the Federal Reserve would leave key lending rates unchanged
- The Bank of England revealed that GDP growth accelerated to 0.5 percent in the March quarter. British government bond yields ended slightly higher despite Brexit negotiations uncertainty.

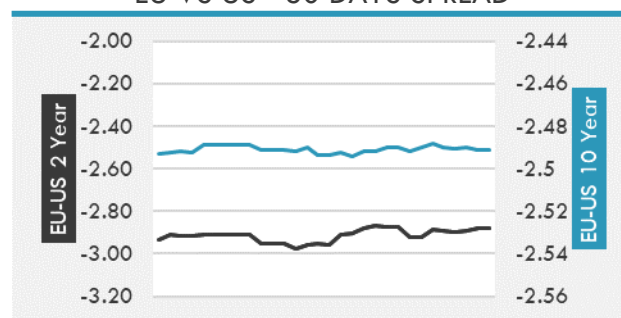
Source: Bloomberg, Financial Times, Economic times, Reuters

OVERNIGHT RATES - SWAPS

	Yield	ΔYield (in Bps)
3M USD LIBOR	2.528	-0.007
3M EUR EURIBOR	-0.309	-0.001
3M GBP LIBOR	0.805	-0.005
3Y USD SWAP	2.307	0.012
5Y USD SWAP	2.304	0.018
10Y USD SWAP	2.452	0.024
30Y USD SWAP	2.634	0.024

USD CORPORATES - 30 DAYS SPREAD

FIXED INCOME SPREADS

	Spread	ΔSpread (in Bps)
USD 3M vs 10Y Spread	0.043	0.025
USD 2Y vs 10Y Spread	0.197	0.017
USD IG Spread	1.510	0.000
USD HY Spread	3.860	0.010
EU vs US 10Y Spread	-2.512	-0.012
EU vs US 2Y Spread	-2.882	0.007
EM vs Benchmark Spread	249.700	0.000

EU VS US - 30 DAYS SPREAD


GLOBAL COMMODITIES MARKET

	Last Price	Daily %
Commodity Index	78.66	0.13%

Energy

WTI Crude Future	61.66	-0.06%
Brent Crude Future	70.62	0.33%
NYMEX Gasoline	198.91	0.69%
NYMEX Heat Oil	205.04	0.33%
ICE Gasoil	636.25	1.07%
NYMEX Natural Gas	2.619	0.92%

Precious Metals

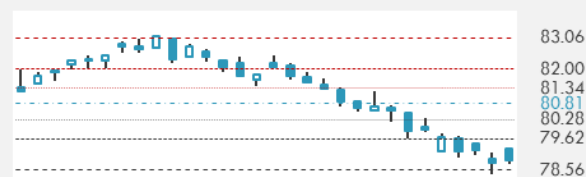
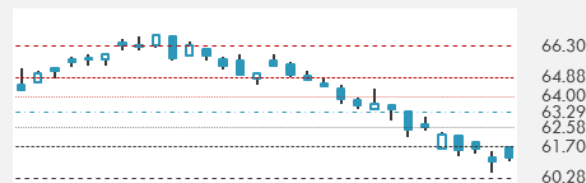
Gold Spot \$/Oz	1286.05	0.15%
Silver Spot \$/Oz	14.787	0.17%
Platinum Spot \$/Oz	865.55	1.94%
Palladium Spot \$/Oz	1357.46	4.48%
Gold Future	1287.4	0.17%
Silver Future	14.79	0.12%
Platinum Future	865.6	1.67%
Palladium Future	1350.7	5.28%

Base Metals

LME Aluminum	1808	0.50%
LME Copper	6126	0.39%
LME Zinc	2630	0.77%
LME Nickel	11921	1.21%
LME Lead	1822	-0.71%
LME Tin	19625	1.90%

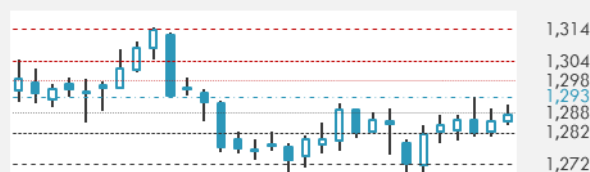
Agricultural

Corn CBT	351.75	-0.42%
Wheat CBT	424.75	-1.11%
Soybeans CBT	809.25	-0.43%
Bean Meal CBT	287.3	-0.62%
Rough Rice CBT	10.985	0.46%
MDE Palm Oil	1983	-1.10%
Soybean CBT	26.79	0.60%
Coffee ICE	90.8	-0.06%
Sugar #11 ICE	11.72	-0.51%
Cotton #2 ICE	68.45	-2.53%
Cocoa ICE	2312	-1.03%
Ethanol CME	1.3	0.00%
Lumber CME	358.5	0.00%
Orange Juice ICE	95.05	1.49%
Live Cattle CME	108.9	1.21%
Feeder Cattle CME	146.825	1.63%
Lean Hogs CME	90.75	-0.25%

COMMODITY INDEX SUPPORT & RESISTANCE

WTI OIL 30 DAYS SUPPORT & RESISTANCE


- Oil prices were mixed on Friday following a move by the U.S. to hike tariffs on Chinese goods which overshadowed tightened global supplies and expectations of rising U.S. refining demand.
- Gold prices rose, supported by a weaker dollar and the Trump administration's increasing of tariffs.

Source: Bloomberg, Reuters

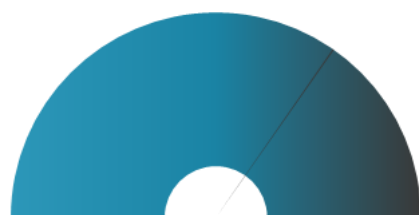
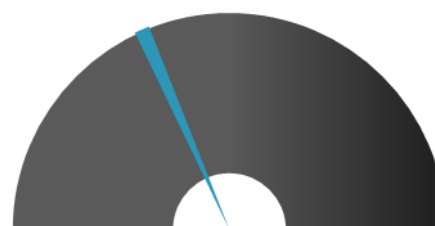
GOLD 30 DAYS SUPPORT & RESISTANCE

SILVER 30 DAYS SUPPORT & RESISTANCE


TOP 10 WINNERS

	Ticker	Last Price	Daily %
S&P 500 Stocks			
BOOKING HOLDINGS	BKNG	1829.85	5.40
LINDE PLC	LIN	181.59	4.75
NEWS CORP-CL A	NWSA	11.9	4.11
NEWS CORP-CL A	NWSA	11.9	4.11
BALL CORP	BLL	64.31	3.11
ADV MICRO DEVICE	AMD	27.96	2.76
WELLCARE HEALTH	WCG	273.62	2.75
FLUOR CORP	FLR	30.73	2.74
T ROWE PRICE GRP	TROW	105.59	2.67
VIACOM INC-B	VIAB	29.25	2.63

TOP 10 LOSERS

	Ticker	Last Price	Daily %
S&P 500 Stocks			
SYMANTEC CORP	SYMC	19.39	-12.54
WYNN RESORTS LTD	WYNN	129.89	-4.72
REGENERON PHARM	REGN	312.86	-3.49
TAPESTRY INC	TPR	32.25	-3.33
HANESBRANDS INC	HBI	17	-2.97
HEWLETT PACKA	HPE	14.79	-2.83
TRIPADVISOR INC	TRIP	47.47	-2.79
MCKESSON CORP	MCK	130.86	-2.78
MARRIOTT INTL-A	MAR	131.71	-2.78
MYLAN NV	MYL	22.17	-2.59

S&P 500 DISTRIBUTION

LOSERS
WINNERS
S&P VOLATILITY INDEX

LOW VOLATILITY
HIGH VOLATILITY

- Media company Viacom beat quarterly profit estimates on Friday, as costs fell and its Paramount Pictures division gained from the success of its movies “Bumblebee” and “What Men Want”.
- A South Korean court said on Saturday it had approved warrants to arrest two senior officials at Samsung Electronics in relation to an alleged accounting fraud at the tech giant’s biopharma affiliate.
- Goldman Sachs Group is nearing a deal to buy boutique wealth management firm United Capital Financial Partners for several hundred million dollars, according to Reuters.
- Facebook rejected a call from co-founder Chris Hughes to split the world’s largest social media company in three, while lawmakers urged the U.S. Justice Department to launch an antitrust investigation.
- Management and labor leaders at Germany’s Thyssenkrupp have agreed on a way forward after the industrial conglomerate announced a fresh restructuring drive that could lead to the loss of 6,000 jobs.
- Emirates Chief Commercial Officer Thierry Antinori has resigned, a spokeswoman said on Sunday, days after the Gulf airline announced its weakest profit in a decade.
- Shares in Japanese conglomerate SoftBank Group tumbled 5.5 percent on Friday, a day after one of its biggest tech bets, Uber Technologies, priced its initial public offering at the low end of the targeted range.
- Danske Bank has hired former ABN AMRO banker Chris Vogelzang as its new CEO.

KEY ECONOMIC INDICATORS

Country	Event	Surv (M)	Actual	Prior	Time
Argentina	LELIQ 7-Day Notes Rate	--	--	72.05%	
Argentina	Capacity Utilization	--	--	58.50%	22:00
Argentina	LELIQ 7-Day Amount Accepted	--	--	217.069b	
Australia	Home Loans MoM	-0.50%	-2.80%	0.80%	4:30
Australia	Investment Lending	-1.50%	-2.70%	0.90%	4:30
Brazil	Trade Balance Weekly	--	--	--	
Canada	Bloomberg Nanos Confidence	--	--	54.9	17:00
China	Foreign Direct Investment YoY CNY	--	--	8.00%	
France	Bank of France Ind. Sentiment	100	--	100	9:30
India	CPI YoY	2.99%	--	2.86%	15:00
Japan	Leading Index CI	96.3	96.3	97.1	8:00
Japan	Official Reserve Assets	--	\$1293.5b	\$1291.8b	2:50
Japan	Bankruptcies YoY	--	--	-16.09%	
Japan	Coincident Index	99.6	99.6	100.4	8:00
Mexico	ANTAD Same-Store Sales YoY	--	--	0.60%	
Mexico	Formal Job Creation Total	--	--	48.5k	
Russia	Light Vehicle Car Sales YoY	1%	--	2%	
South Korea	Bank Lending To Household Total	--	KR838.6t	KR834.1t	6:00
Turkey	Current Account Balance	-1.00b	--	-0.72b	10:00
United States	Mortgage Delinquencies	--	--	4.06%	
United States	MBA Mortgage Foreclosures	--	--	0.95%	
United States	Fed's Rosengren, Clarida talk at event				16:05

Source: Bloomberg

Banque BEMO sal

Head Office - Private and Corporate Banking

96 Pasteur Building, Pasteur Street, Medawar Area, P.O. Box: 16-6353, Beirut - Lebanon
Tel: + 961 1 568 250 Fax: + 961 1 568 266

Wealth & Investment Management research@bemobank.com

Beirut Central District Riad El Solh Square, Esseily Building Bloc A, 7th Floor Beirut - Lebanon
Tel: + 961 1 992 600 Fax: + 961 1 983 368
www.bemobank.com

Disclaimer:

This report is published for information purposes only. The information herein has been compiled from, or based upon sources considered to be reliable (Bloomberg, SeekingAlpha, DailyStar...), but we do not guarantee or assume responsibility for its completeness and accuracy. This document should not be construed as a solicitation to take part in any investment, or as constituting any representation or warranty on our part. This report is not to be relied upon in substitution for the exercise of specialists.

We may not have taken any steps to ensure that the securities referred to in this report are suitable for any particular investor. The investments and services contained or referred to herein are not purported to be exhaustive, any person considering an investment should seek specialist advice on the suitability of an investment.

Nothing in this report constitutes investment, legal, accounting or tax advice, or a representation that any investment or strategy is suitable or appropriate to your individual circumstances, or otherwise constitutes a personal recommendation. Clients understand that it is their responsibility to seek legal and/or tax advice regarding the legal and tax consequences of their investment transactions. The consequences of any action taken on the basis of information contained herein are solely the responsibility of the recipient.

Investment instruments are subject to risk, including possible loss of principal amount invested. Past performance should not be taken as an indication or guarantee of future performance, and no representation or warranty, express or implied, is made regarding future performance. The value of securities and financial instruments is subject to exchange rate fluctuation that may have a positive or adverse effect on the price or income of such securities or financial instruments. Some investments mentioned in this report may have a high level of volatility. High volatility investments may experience sudden and large falls in their value causing losses when that investment is realized. Some investments may not be readily realizable and it may be difficult to sell or realize those investments, similarly it may prove difficult to obtain reliable information about the value, or risks, to which such an investment is exposed.

This report may provide the addresses of websites or references. We have not reviewed any such site and takes no responsibility for the content contained therein. Such address or reference is provided solely for convenience and information. Accessing such website through this report shall be at the recipients own risk.