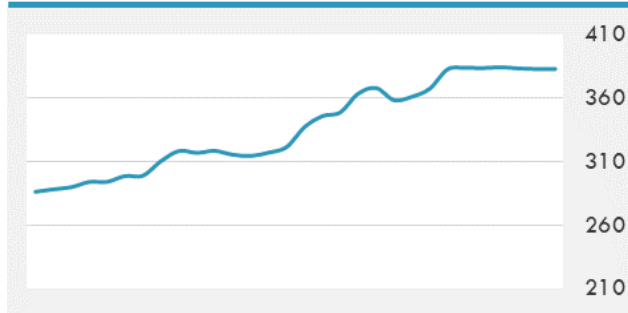
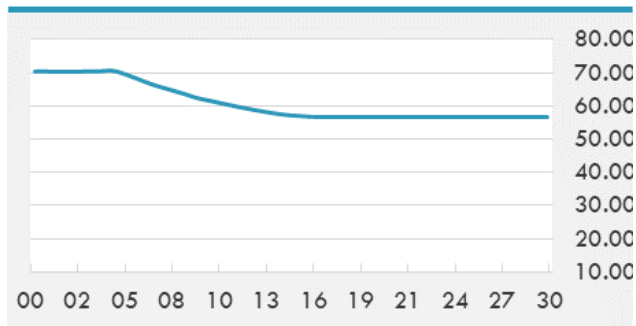


BEIRUT STOCK EXCHANGE

	Last	Daily %	YTD %	Dividend %
MSCI Lebanon	382.84	-0.15%	41.98%	
Development and Reconstruction				
Solidere A	15	0.00%	105.48%	
Solidere B	14.8	-0.67%	103.02%	
Banking				
Audi Listed	0.95	-1.04%	-72.86%	
BLC Listed	0.93	0.00%	0.00%	
BOB Listed	18.8	0.00%	0.00%	
Byblos Listed	0.4	0.00%	-60.00%	
BEMO Listed	1.2	0.00%	4.35%	
BLOM Listed	3.18	0.00%	-55.02%	
Trading				
RYMCO	3.19	0.00%	-2.74%	
Industrial				
Holcim	12.1	0.00%	24.10%	
Ciments Blancs	3.8	0.00%	46.15%	

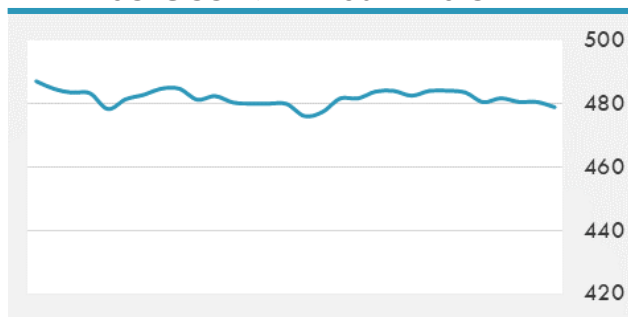
MSCI LEBANON INDEX - 30 DAYS CHART

LEBANESE USD SOVEREIGN CURVE


- Lebanon's government and the Central Bank are working on adjusting the state's economic rescue plan to introduce it to the International Monetary Fund to speed up the financial assistance to the country, a source said Friday. "The government will not alter the estimated losses mentioned in its economic rescue plan but is now trying to combine the approaches of the Cabinet and BDL," the source told The Daily Star. Lazard consultancy firm, which helped in drafting the original government's rescue paper, will also try to make modifications to the paper.

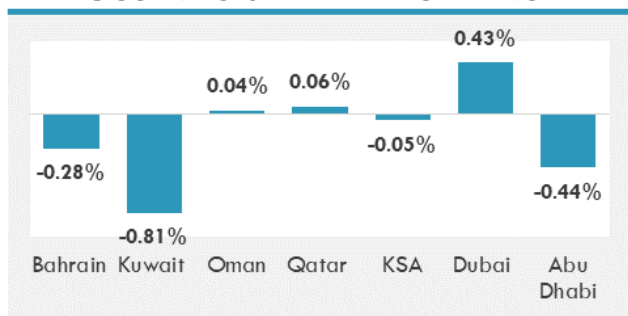
Source: Daily Star, Gulf Business, Mubasher, Bloomberg, Businessnews LB

GCC EQUITY INDICES

	Last Price	Daily %	YTD %
Bahrain	1302.48	-0.28%	-19.33%
Kuwait	5046.16	-0.81%	-20.33%
Oman	3451.41	0.04%	-13.20%
Qatar	9316.51	0.06%	-10.41%
KSA	7423.23	-0.05%	-11.78%
Dubai	2061.43	0.43%	-25.63%
Abu Dhabi	4255.78	-0.44%	-16.78%

MSCI GCC INDEX - 30 DAYS CHART

LOCAL/GCC FOREIGN EXCHANGE

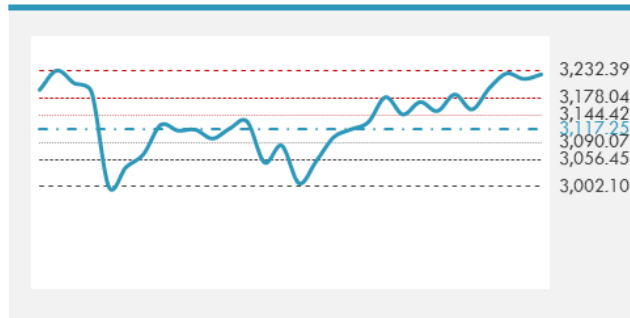
	Cross	Last Price
Lebanese Pound Spot	USD/LBP	1513.5
Bahraini Dinar Spot	USD/BHD	0.37705
Kuwaiti Dinar Spot	USD/KWD	0.30731
Omani Rial Spot	USD/OMR	0.38474
Qatari Riyal Spot	USD/QAR	3.6613
Saudi Riyal Spot	USD/SAR	3.7507
UAE Dirham Spot	USD/AED	3.673

GCC INDICES DAILY PERFORMANCE


UNITED STATES EQUITY MARKET INDICES

	Last Price	Daily %	YTD %	Δ10D Vol
Major Indices				
Dow Jones	26671.95	-0.23%	-6.54%	-1.56%
S&P 500	3224.73	0.28%	-0.19%	-1.88%
Nasdaq	10503.19	0.28%	17.06%	-3.34%
Sectors Indices				
Discretionary	1107.71	-0.67%	12.31%	-5.92%
Staples	631.38	0.42%	-2.41%	-0.01%
Energy	278.27	-1.52%	-39.04%	0.60%
Financials	397.87	-0.84%	-22.20%	-0.44%
Healthcare	1233.67	1.36%	3.83%	0.62%
Industrials	608.04	0.55%	-11.57%	-0.74%
IT	1879.14	0.48%	16.63%	-2.24%
Materials	384.72	0.79%	-0.29%	-0.58%
Communication Services	190.61	-0.43%	4.94%	-2.37%
Utilities	306.08	2.28%	-6.79%	0.61%
Real Estate	217.37	1.40%	-9.55%	2.57%

S&P 500 INDEX - 30 DAYS CHART

S&P 500 SUPPORT & RESISTANCE


- The U.S. equities benchmark S&P 500 climbed for the third consecutive week as investors weighed updates in coronavirus news against new economic data and a first wave of corporate earnings.
- European stocks edged up as investors digested earnings reports, while awaiting the result of negotiations aimed at resolving differences among EU leaders about a recovery fund to ease the pandemic's economic pain.

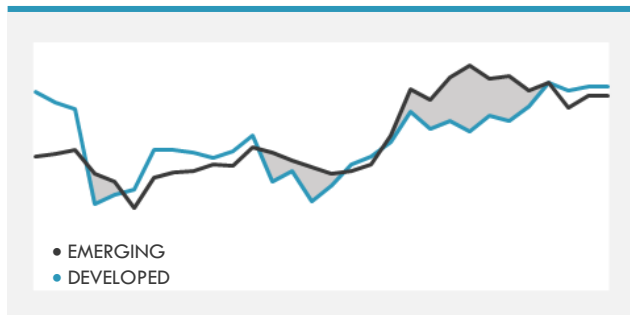
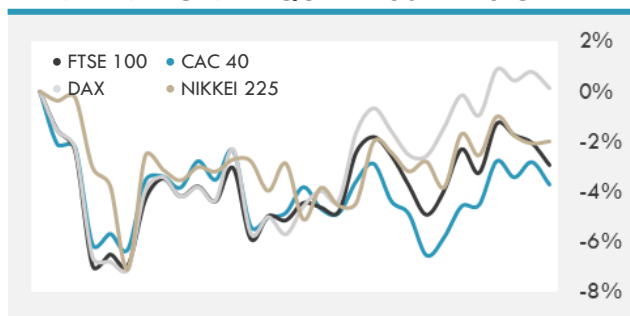
Source: Bloomberg, Financial Times, Reuters

INTERNATIONAL MARKETS INDICES

	Last Price	Daily %	YTD %	Δ10D Vol
World	1338.61	0.30%	-3.08%	-3.31%
Developed	2293.92	0.22%	-2.74%	-2.66%
Emerging	1055.06	0.86%	-5.35%	-4.56%
Frontier	2143.52	-0.27%	-22.13%	-1.26%
Europe	123.99	0.15%	-11.18%	-2.15%
Latin America	2005.57	1.25%	-31.26%	-2.42%
Asia Pacific	164.55	0.43%	-3.58%	-3.84%

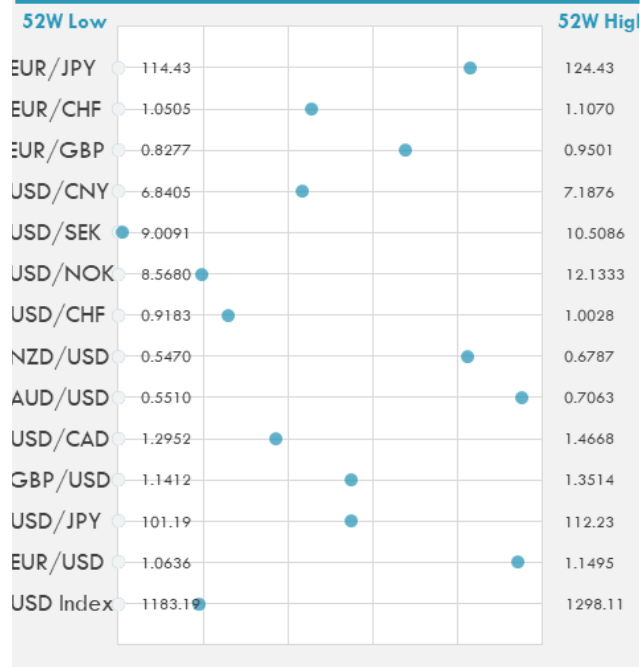
INTERNATIONAL EQUITY INDICES

	Last Price	Daily %	YTD %	Δ10D Vol
EuroStoxx 50	3365.6	0.01%	-10.13%	-1.99%
FTSE 100	6290.3	0.63%	-16.60%	-2.77%
CAC 40	5069.42	-0.31%	-15.20%	-1.40%
DAX	12919.61	0.35%	-2.49%	-1.75%
Swiss SMI	10410.52	-0.22%	-1.94%	-0.92%
Nikkei 225	22717.48	0.09%	-3.97%	-2.22%
CSI 300	4680.3	2.98%	14.25%	-11.86%

DEVELOPED VS EMERGING - 30 DAYS CHART

INTERNATIONAL EQUITY - 30 DAYS CHART


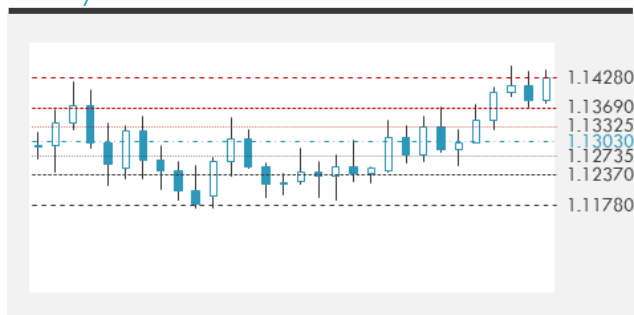
FOREIGN EXCHANGE MARKET

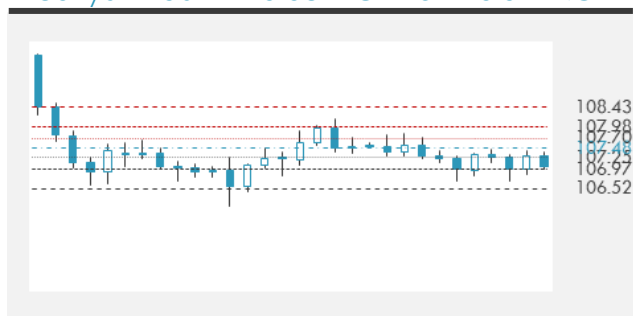
	Last Price	Daily %	Δ10D	Vol 25	ΔRR
Major USD Cross Rate					
USD Index	1205.12	0.03%	-0.70%	-	
EUR/USD	1.1446	0.16%	-0.61%	0.228	
USD/JPY	107.24	0.21%	0.08%	-0.390	
GBP/USD	1.2568	0.00%	-0.39%	0.075	
USD/CAD	1.3589	0.07%	-0.46%	0.235	
AUD/USD	0.6989	-0.10%	-0.40%	-0.715	
NZD/USD	0.6555	-0.03%	-0.05%	-0.623	
USD/CHF	0.9403	0.18%	0.12%	-0.285	
USD/NOK	9.2667	-0.29%	-1.81%	0.475	
USD/SEK	9.0244	-0.11%	-0.33%	0.385	
USD/CNY	6.9908	-0.02%	-0.02%	0.300	
EUR/GBP	0.9107	0.16%	-1.51%	0.315	
EUR/CHF	1.07622	0.33%	-0.34%	0.365	
EUR/JPY	122.74	0.34%	-0.04%	-0.188	

DISTANCE FROM 52 WEEKS LOW/HIGH


- The euro climbed to a four-month high against the dollar amid signs of progress in negotiations among European Union governments over a stimulus package.
- Australia's dollar fell as the rising global tally of virus infections overshadowed a move by the government to extend aid to small businesses.

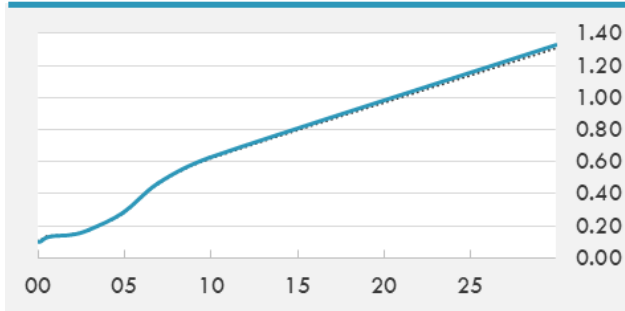
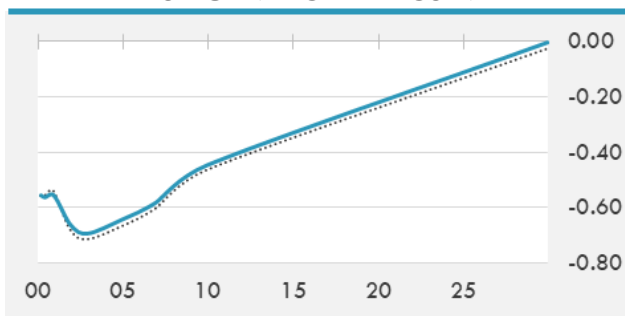
Source: Bloomberg, Financial Times, Reuters

EUR/USD 30 DAYS SUPPORT & RESISTANCE

GBP/USD 30 DAYS SUPPORT & RESISTANCE

USD/JPY 30 DAYS SUPPORT & RESISTANCE

USD/CAD 30 DAYS SUPPORT & RESISTANCE


GLOBAL BOND INDICES

	Yield	ΔYield (in Bps)
Benchmark Indices		
US 10 Years Benchmark	0.6266	0.010
EU 10 Years Benchmark	-0.447	0.018
UK 10 Years Benchmark	0.163	0.024
Sovereign Bonds		
US Treasury Bond	0.477	0.012
Eurozone Sovereign Bond	-0.144	0.009
Japan Sovereign Bond	-0.131	0.003
Corporate Bonds		
US Corporate TR	1.985	-0.003
US High Yield Bond TR	6.147	-0.015
EUR Aggregate Corporate TR	0.756	-0.001
EUR High Yield TR	4.899	-0.023
USD Emerging Market IG & HY	4.483	-0.023

US TREASURIES YIELD CURVE

EUR GENERIC YIELD CURVE


- The U.S. Treasury cash balance rose to a record \$1.81 trillion according to the daily Treasury statement data released late Friday for July 16, a day after the largest tax obligation day of 2020. The record surpassed the prior high of \$1.74t that was set the day before.
- Italian bonds advance, bunds fall with EU leaders set to resume deadlocked recovery-fund talks at 3pm London time Monday with hardliners ready to accept EU390b in grants.

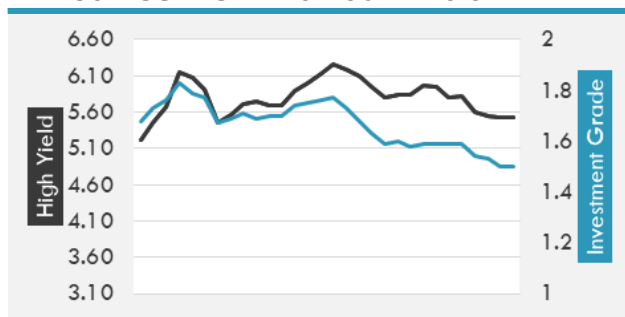
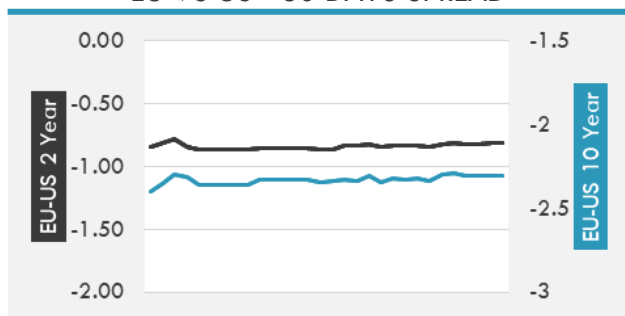
OVERNIGHT RATES - SWAPS

	Yield	ΔYield (in Bps)
3M USD LIBOR	0.271	0.000
3M EUR EURIBOR	-0.443	0.006
3M GBP LIBOR	0.078	-0.007
3Y USD SWAP	0.234	0.004
5Y USD SWAP	0.325	0.008
10Y USD SWAP	0.615	0.015
30Y USD SWAP	0.874	0.024

FIXED INCOME SPREADS

	Spread	ΔSpread (in Bps)
USD 3M vs 10Y Spread	0.507	0.005
USD 2Y vs 10Y Spread	0.480	0.012
USD IG Spread	1.500	-0.030
USD HY Spread	5.520	-0.020
EU vs US 10Y Spread	-1.074	0.000
EU vs US 2Y Spread	-0.809	0.016
EM vs Benchmark Spread	361.500	-1.800

Source: Bloomberg, Financial Times, Economic times, Reuters

USD CORPORATES - 30 DAYS SPREAD

EU VS US - 30 DAYS SPREAD


GLOBAL COMMODITIES MARKET

	Last Price	Daily %
Commodity Index	66.26	-0.36%

Energy

WTI Crude Future	40.16	-1.06%
Brent Crude Future	42.7	-1.02%
NYMEX Gasoline	121.27	-0.96%
NYMEX Heat Oil	120.42	-1.22%
ICE Gasoil	362.5	-1.36%
NYMEX Natural Gas	1.694	-1.40%

Precious Metals

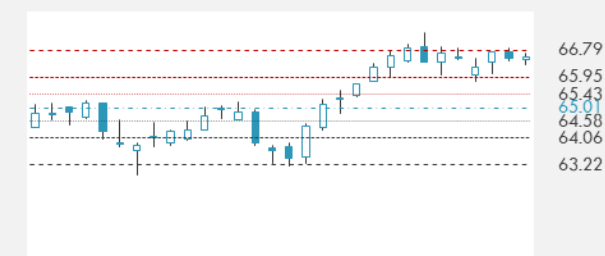
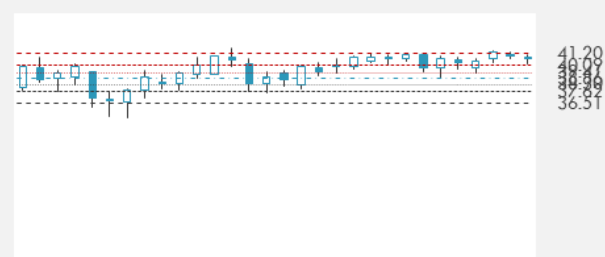
Gold Spot \$/Oz	1809.4	-0.06%
Silver Spot \$/Oz	19.3315	0.02%
Platinum Spot \$/Oz	840.6	0.04%
Palladium Spot \$/Oz	2016.11	-0.21%
Gold Future	1809.3	-0.04%
Silver Future	19.72	-0.22%
Platinum Future	850	0.05%
Palladium Future	2055.5	-0.78%

Base Metals

LME Aluminum	1662	-0.54%
LME Copper	6448	0.18%
LME Zinc	2183	-1.93%
LME Nickel	13220	-1.78%
LME Lead	1815	-1.81%
LME Tin	17330	-0.23%

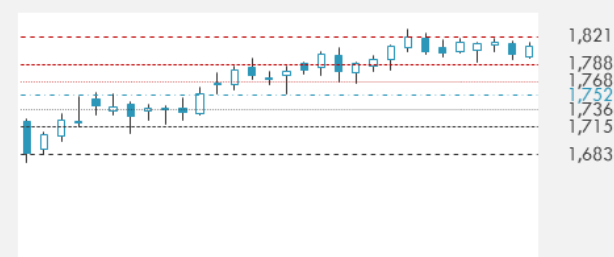
Agricultural

Corn CBT	337.5	-0.66%
Wheat CBT	533.5	-0.23%
Soybeans CBT	898	0.34%
Bean Meal CBT	293.8	-0.10%
Rough Rice CBT	11.835	0.08%
MDE Palm Oil	2650	1.38%
Soybean CBT	30.81	0.88%
Coffee ICE	102.3	0.00%
Sugar #11 ICE	11.73	0.00%
Cotton #2 ICE	62	0.10%
Cocoa ICE	2160	0.00%
Ethanol CME	1.17	0.00%
Lumber CME	550.8	0.00%
Orange Juice ICE	127.3	0.00%
Live Cattle CME	106.875	0.00%
Feeder Cattle CME	143.325	0.00%
Lean Hogs CME	51.075	-1.45%

COMMODITY INDEX SUPPORT & RESISTANCE

WTI OIL 30 DAYS SUPPORT & RESISTANCE


- Oil extended losses toward \$40 a barrel as concerns about demand linger with the coronavirus raging unabated across many regions.

Source: Bloomberg, Reuters

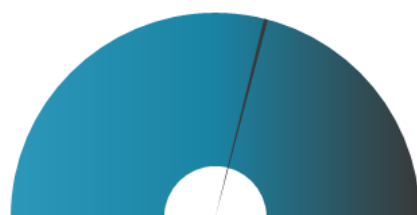
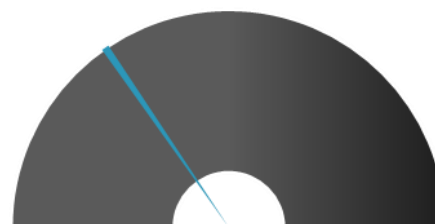
GOLD 30 DAYS SUPPORT & RESISTANCE

SILVER 30 DAYS SUPPORT & RESISTANCE


TOP 10 WINNERS

	Ticker	Last Price	Daily %
S&P 500 Stocks			
INTUITIVE SURGIC	ISRG	650.74	7.69
AES CORP	AES	15.63	5.04
ALIGN TECHNOLOGY	ALGN	322.3	4.30
ABIOMED INC	ABMD	284.55	4.22
PUB SERV ENTERP	PEG	55.08	4.10
BOSTON SCIENTIFC	BSX	37.71	3.68
BLACKROCK INC	BLK	587.72	3.66
PROLOGIS INC	PLD	95.34	3.52
ZIMMER BIOMET HO	ZBH	135.14	3.51
EXELON CORP	EXC	39.395	3.51

TOP 10 LOSERS

	Ticker	Last Price	Daily %
S&P 500 Stocks			
NETFLIX INC	NFLX	492.99	-6.52
MGM RESORTS INTE	MGM	16.81	-4.49
REGIONS FINANCIA	RF	10.32	-4.44
STATE ST CORP	STT	61.71	-4.36
AMERICAN AIRLINE	AAL	11.91	-4.34
FOX CORP - B	FOX	25.26	-4.30
OCCIDENTAL PETE	OXY	16.28	-4.29
DOMINO'S PIZZA	DPZ	390.22	-4.25
SCHWAB (CHARLES)	SCHW	33.44	-4.24
APACHE CORP	APA	13.29	-4.18

S&P 500 DISTRIBUTION

LOSERS
WINNERS
S&P VOLATILITY INDEX

LOW VOLATILITY
HIGH VOLATILITY

- Reuters reports that the European Union (EU) is negotiating with Moderna, Sanofi, Johnson & Johnson, BioNTech and CureVac for advance purchases of their respective COVID-19 vaccines. The EU shared the information yesterday in Berlin with EU health ministers. Talks with JNJ and SNY appear to be the most advanced since discussions are currently focused on the number of doses needed, 200M from JNJ and 300M from SNY.
- Johnson & Johnson unit Janssen Pharmaceutical Companies reports positive six-month data from a Phase 1/2 clinical trial evaluating gene therapy AAV-RPGR in patients with X-linked retinitis pigmentosa, a group of inherited retinal disorders characterized by progressive vision loss. Preliminary results showed that low and intermediate doses were generally well-tolerated and indicated significant improvements in vision. A pre-recorded webcast on the data is available via www.investor.jnj.com and selecting "Webcasts/Presentations."
- Volvo AB reports Q2 sales decline of 39% Y/Y and -38% on a constant currency basis. Vehicle sales decreased by 46% and service sales by 15%. Sales dropped 39% in Europe, -61% in North America and -54% in South America. Trucks net sales -46% and Buses net sales -64%. In Q2, demand for construction equipment in both Europe and North America was weak, partly offset by a strong rebound in the Chinese market. Adjusted operating margin squeezed 800 bps to 4.5%.

KEY ECONOMIC INDICATORS

Country	Event	Surv (M)	Actual	Prior	Time
Canada	Teranet/National Bank HPI MoM	--	--	1.10%	15:30
Canada	Teranet/National Bank HPI YoY	--	--	6.00%	15:30
Canada	Teranet/National Bank HP Index	--	--	236.55	15:30
China	1-Year Loan Prime Rate	3.85%	3.85%	3.85%	4:30
China	5-Year Loan Prime Rate	4.65%	4.65%	4.65%	4:30
Eurozone	ECB Current Account SA	--	--	14.4b	11:00
Germany	PPI MoM	0.20%	0.00%	-0.40%	9:00
Germany	PPI YoY	-1.70%	-1.80%	-2.20%	9:00
Italy	Current Account Balance	--	--	-915m	11:00
Japan	Trade Balance	-¥7.6b	-¥268.8b	-¥833.4b	02:50
Japan	Trade Balance Adjusted	-¥331.1b	-¥423.9b	-¥601.0b	02:50
Japan	Exports YoY	-24.70%	-26.20%	-28.30%	2:50
Japan	Convenience Store Sales YoY	--	-5.20%	-10.00%	8:00
Japan	Imports YoY	-17.60%	-14.40%	-26.20%	2:50
Japan	BOJ Minutes of June Meeting				2:50
Lebanon	CPI YoY	--	--	56.53%	
United States	"P&P Live!: Pam Fessler ? Carville's...				0:00
United States	House not in session				7:00
United States	Senate in session				7:00
United States	The Association of the United States Army				7:00

Source: Bloomberg

Banque BEMO sal

Head Office - Private and Corporate Banking

 96 Pasteur Building, Pasteur Street, Medawar Area, P.O. Box: 16-6353, Beirut - Lebanon
 Tel: + 961 1 568 250 Fax: + 961 1 568 266

Wealth & Investment Management research@bemobank.com

 Beirut Central District Riad El Solh Square, Esseily Building Bloc A, 7th Floor Beirut - Lebanon
 Tel: + 961 1 992 600 Fax: + 961 1 983 368
www.bemobank.com

Disclaimer:

This report is published for information purposes only. The information herein has been compiled from, or based upon sources considered to be reliable (Bloomberg, SeekingAlpha, DailyStar...), but we do not guarantee or assume responsibility for its completeness and accuracy. This document should not be construed as a solicitation to take part in any investment, or as constituting any representation or warranty on our part. This report is not to be relied upon in substitution for the exercise of specialists.

We may not have taken any steps to ensure that the securities referred to in this report are suitable for any particular investor. The investments and services contained or referred to herein are not purported to be exhaustive, any person considering an investment should seek specialist advice on the suitability of an investment.

Nothing in this report constitutes investment, legal, accounting or tax advice, or a representation that any investment or strategy is suitable or appropriate to your individual circumstances, or otherwise constitutes a personal recommendation. Clients understand that it is their responsibility to seek legal and/or tax advice regarding the legal and tax consequences of their investment transactions. The consequences of any action taken on the basis of information contained herein are solely the responsibility of the recipient.

Investment instruments are subject to risk, including possible loss of principal amount invested. Past performance should not be taken as an indication or guarantee of future performance, and no representation or warranty, express or implied, is made regarding future performance. The value of securities and financial instruments is subject to exchange rate fluctuation that may have a positive or adverse effect on the price or income of such securities or financial instruments. Some investments mentioned in this report may have a high level of volatility. High volatility investments may experience sudden and large falls in their value causing losses when that investment is realized. Some investments may not be readily realizable and it may be difficult to sell or realize those investments, similarly it may prove difficult to obtain reliable information about the value, or risks, to which such an investment is exposed.

This report may provide the addresses of websites or references. We have not reviewed any such site and takes no responsibility for the content contained therein. Such address or reference is provided solely for convenience and information. Accessing such website through this report shall be at the recipients own risk.