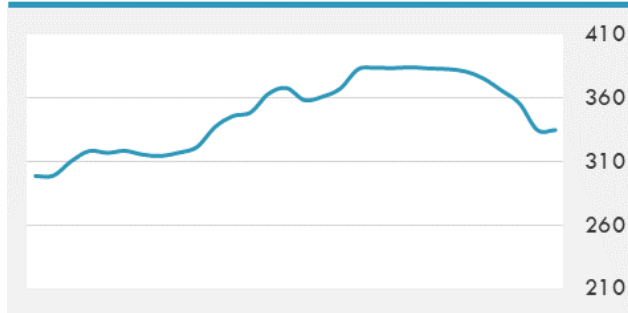
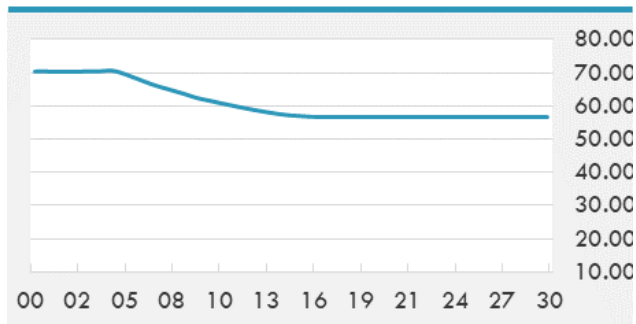


BEIRUT STOCK EXCHANGE

	Last	Daily %	YTD %	Dividend %
MSCI Lebanon	334.89	-5.89%	24.19%	
Development and Reconstruction				
Solidere A	12.87	-6.87%	76.30%	
Solidere B	13.02	-5.24%	78.60%	
Banking				
Audi Listed	0.96	0.00%	-72.57%	
BLC Listed	0.93	0.00%	0.00%	
BOB Listed	18.8	0.00%	0.00%	
Byblos Listed	0.37	0.00%	-63.00%	
BEMO Listed	1.2	0.00%	4.35%	
BLOM Listed	3.18	0.00%	-55.02%	
Trading				
RYMCO	3.19	0.00%	-2.74%	
Industrial				
Holcim	12.1	0.00%	24.10%	
Ciments Blancs	4.56	0.00%	75.38%	

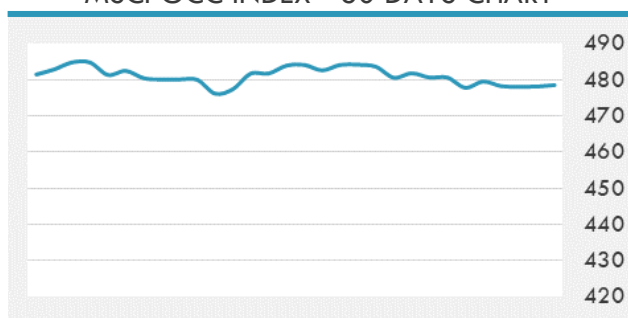
MSCI LEBANON INDEX - 30 DAYS CHART

LEBANESE USD SOVEREIGN CURVE


- Saudi oil revenues plunged by SAR 133.97 billion or 40.38% on a yearly basis during the first five months of 2020, driven by the COVID-19 pandemic and its effects on the global economy and the oil demand. The decline came also amid a collapse in prices due to tensions between OPEC and its partners regarding output cuts before a reduction agreement was reached.

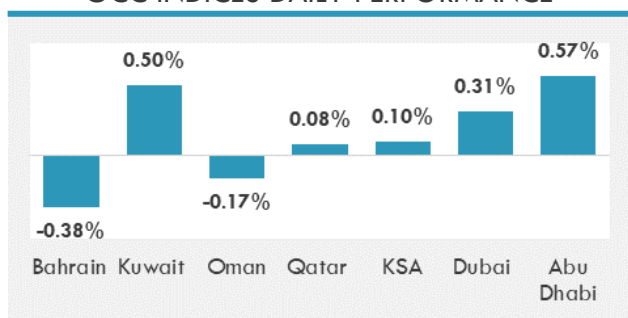
Source: Daily Star, Gulf Business, Mubasher, Bloomberg, Businessnews LB

GCC EQUITY INDICES

	Last Price	Daily %	YTD %
Bahrain	1284.64	-0.38%	-20.52%
Kuwait	4874.61	0.50%	-22.02%
Oman	3557.99	-0.17%	-10.61%
Qatar	9375.4	0.08%	-10.39%
KSA	7434.05	0.10%	-11.29%
Dubai	2059.08	0.31%	-25.39%
Abu Dhabi	4285.3	0.57%	-15.35%

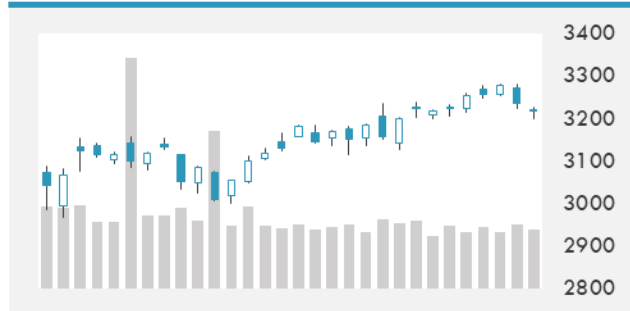
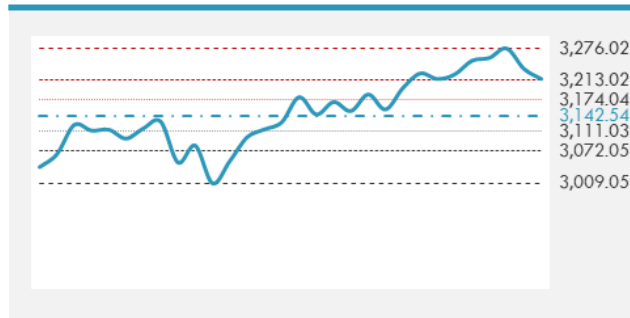
MSCI GCC INDEX - 30 DAYS CHART

LOCAL/GCC FOREIGN EXCHANGE

	Cross	Last Price
Lebanese Pound Spot	USD/LBP	1513.5
Bahraini Dinar Spot	USD/BHD	0.377
Kuwaiti Dinar Spot	USD/KWD	0.30618
Omani Rial Spot	USD/OMR	0.385
Qatari Riyal Spot	USD/QAR	3.6593
Saudi Riyal Spot	USD/SAR	3.7508
UAE Dirham Spot	USD/AED	3.673

GCC INDICES DAILY PERFORMANCE


UNITED STATES EQUITY MARKET INDICES

	Last Price	Daily %	YTD %	Δ10D Vol
Major Indices				
Dow Jones	26469.89	-0.68%	-7.25%	0.78%
S&P 500	3215.63	-0.62%	-0.47%	-0.74%
Nasdaq	10363.18	-0.94%	15.50%	-2.46%
Sectors Indices				
Discretionary	1122.55	0.33%	13.82%	-2.19%
Staples	636.52	-0.14%	-1.62%	-0.13%
Energy	284.11	-0.59%	-37.76%	0.04%
Financials	402.85	-0.37%	-21.22%	0.56%
Healthcare	1224.52	-1.11%	3.06%	2.91%
Industrials	606.87	-0.80%	-11.74%	1.65%
IT	1850.22	-1.19%	14.84%	-1.80%
Materials	386.76	-0.32%	0.24%	0.51%
Communication Services	188.43	-0.06%	3.74%	-3.43%
Utilities	306.37	-0.63%	-6.70%	0.96%
Real Estate	215.96	-0.40%	-10.14%	-2.58%

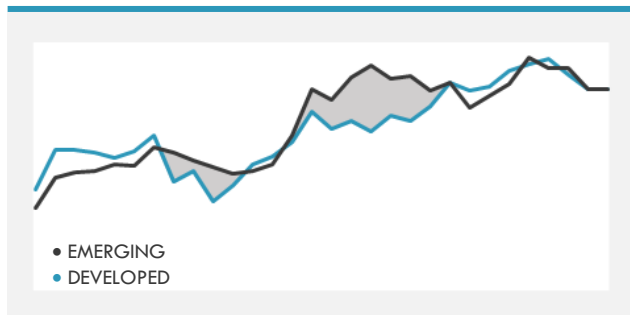
S&P 500 INDEX - 30 DAYS CHART

S&P 500 SUPPORT & RESISTANCE


- U.S. equities dropped for a second day as rising U.S.-China tensions, debate over another stimulus package and slower-than-expected economic recovery all contributed to investor concern.
- European stocks ended lower on Friday, halting a three-week spell of gains, hurt by renewed concern over escalating U.S.-China tensions. The Stoxx Europe 600 Index closed 1.7% lower, erasing the advance notched up since Monday. All industry groups declined, with chip stocks dragging the tech sector to the worst performance after Intel Corp. warned of another production delay.

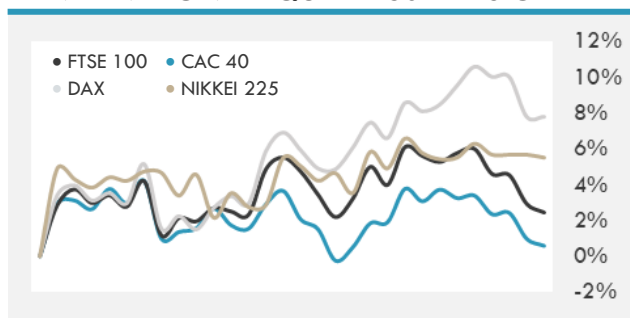
Source: Bloomberg, Financial Times, Reuters

INTERNATIONAL MARKETS INDICES

	Last Price	Daily %	YTD %	Δ10D Vol
World	1338.19	-0.83%	-3.11%	1.30%
Developed	2291.58	-0.72%	-2.84%	0.94%
Emerging	1060.47	-1.59%	-4.86%	2.00%
Frontier	2118.27	-0.54%	-23.04%	0.34%
Europe	122.01	-1.69%	-12.60%	2.32%
Latin America	2060	-0.36%	-29.40%	-0.42%
Asia Pacific	165.4	-0.81%	-3.08%	0.01%

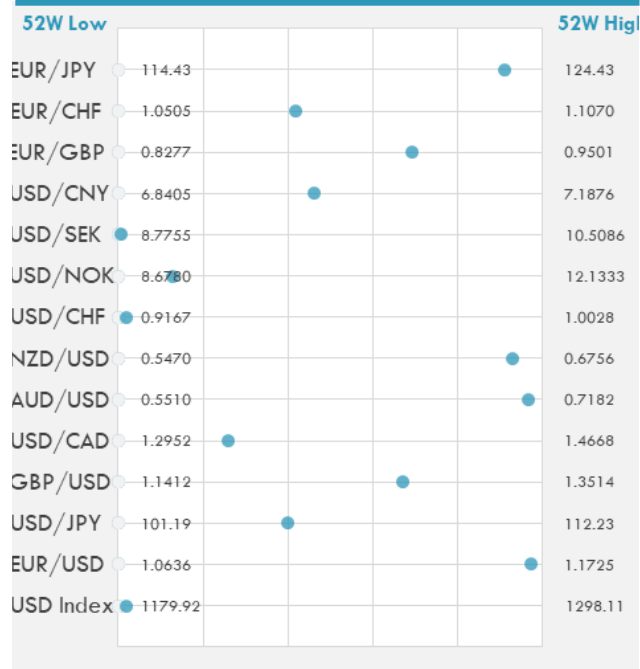
DEVELOPED VS EMERGING - 30 DAYS CHART

INTERNATIONAL EQUITY INDICES

	Last Price	Daily %	YTD %	Δ10D Vol
EuroStoxx 50	3310.89	-1.80%	-11.60%	1.12%
FTSE 100	6123.82	-1.41%	-18.81%	0.65%
CAC 40	4956.43	-1.54%	-17.09%	-0.73%
DAX	12838.06	-2.02%	-3.10%	3.86%
Swiss SMI	10214.21	-1.63%	-3.79%	2.76%
Nikkei 225	22715.85	-0.16%	-3.98%	0.00%
CSI 300	4528.45	0.51%	10.54%	4.14%

INTERNATIONAL EQUITY - 30 DAYS CHART


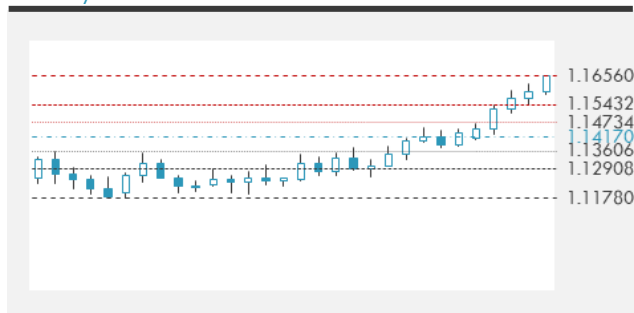
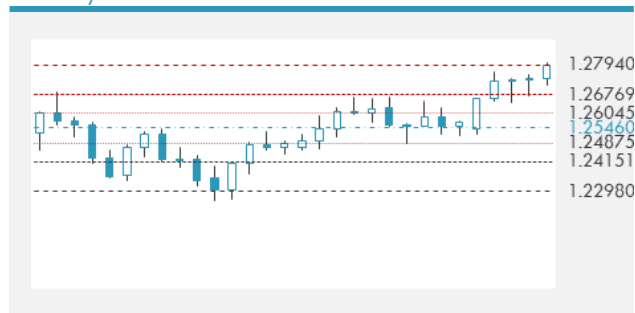
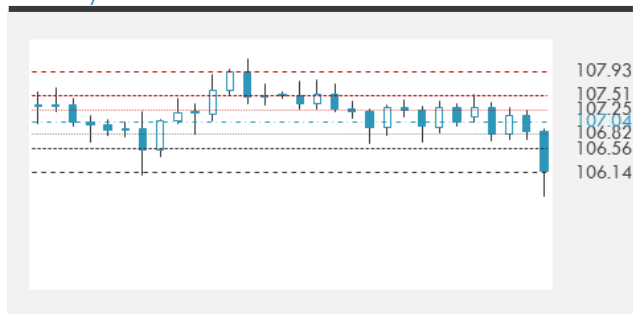
FOREIGN EXCHANGE MARKET

	Last Price	Daily %	Δ10D	Vol 25	ΔRR
Major USD Cross Rate					
USD Index	1182.33	-0.55%	0.39%	-	
EUR/USD	1.1698	0.36%	-0.13%	0.450	
USD/JPY	105.6	-0.51%	0.34%	-1.138	
GBP/USD	1.2821	0.21%	-0.18%	0.040	
USD/CAD	1.3396	-0.14%	-0.12%	-0.205	
AUD/USD	0.7127	0.31%	-0.09%	-0.935	
NZD/USD	0.6665	0.36%	-0.16%	-0.715	
USD/CHF	0.9182	-0.26%	-0.02%	-0.433	
USD/NOK	9.1171	-0.39%	-0.04%	0.178	
USD/SEK	8.7886	-0.57%	-0.90%	0.358	
USD/CNY	7.0013	-0.24%	0.33%	0.650	
EUR/GBP	0.91241	0.15%	-0.59%	0.315	
EUR/CHF	1.0742	0.10%	-0.27%	0.250	
EUR/JPY	123.54	-0.13%	-0.03%	-0.435	

DISTANCE FROM 52 WEEKS LOW/HIGH


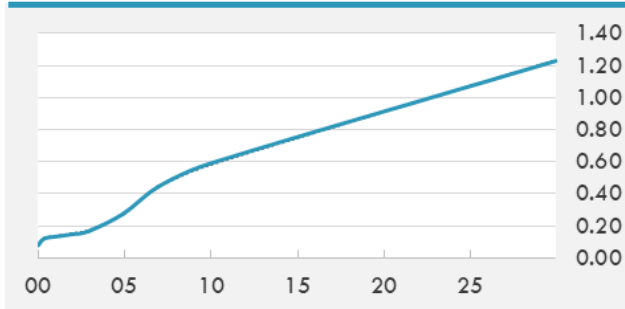
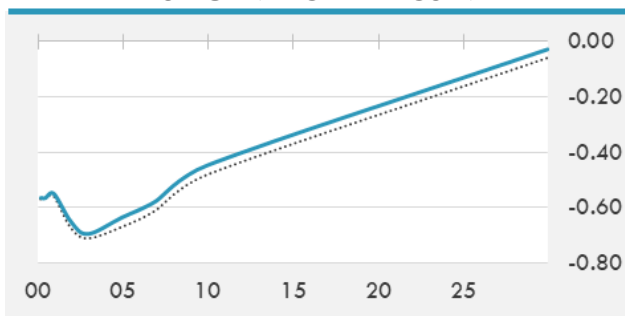
- The dollar's decline is worsening, with money managers positioning for a summer of prolonged weakness. The Bloomberg Dollar Spot Index slid to near an 18-month low on Monday, extending four weeks of losses.
- Yen advances to the highest level since March as escalation of tensions between the U.S. and China boosts demand for the haven currency.

Source: Bloomberg, Financial Times, Reuters

EUR/USD 30 DAYS SUPPORT & RESISTANCE

GBP/USD 30 DAYS SUPPORT & RESISTANCE

USD/JPY 30 DAYS SUPPORT & RESISTANCE

USD/CAD 30 DAYS SUPPORT & RESISTANCE


GLOBAL BOND INDICES

	Yield	ΔYield (in Bps)
Benchmark Indices		
US 10 Years Benchmark	0.5888	0.011
EU 10 Years Benchmark	-0.448	0.033
UK 10 Years Benchmark	0.144	0.020
Sovereign Bonds		
US Treasury Bond	0.454	0.002
Eurozone Sovereign Bond	-0.187	0.027
Japan Sovereign Bond	-0.127	-0.001
Corporate Bonds		
US Corporate TR	1.901	0.009
US High Yield Bond TR	5.566	-0.021
EUR Aggregate Corporate TR	0.672	0.025
EUR High Yield TR	4.664	0.005
USD Emerging Market IG & HY	4.322	0.009

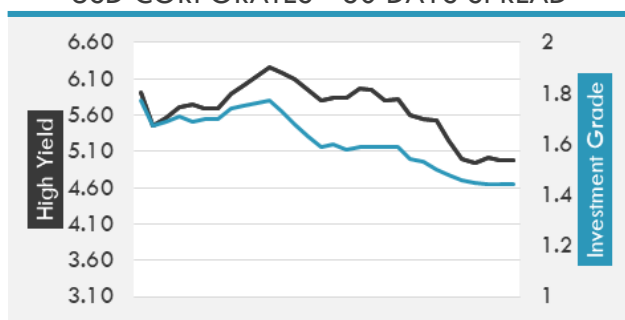
US TREASURIES YIELD CURVE

EUR GENERIC YIELD CURVE


- Bunds little changed, underperforming Treasuries ahead of a Belgian debt sale, Ifo numbers. Italian bonds are little changed.
- The Germany 2-year to 10-year yield curve will flatten to 20 basis points by the end of the third quarter, from the current 21 basis points, based on Bloomberg surveys of market forecasts. In the past 6 months, the curve has been as flat as 16 basis points and as steep as 54 basis points.

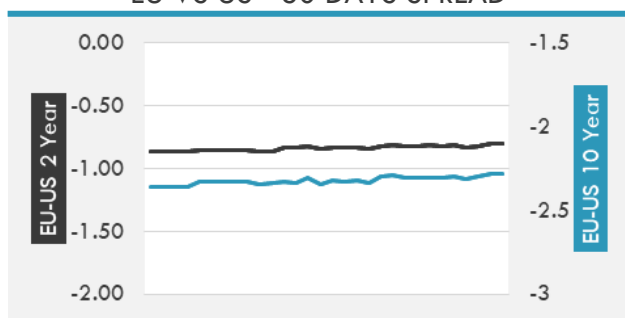
Source: Bloomberg, Financial Times, Economic times, Reuters

OVERNIGHT RATES - SWAPS

	Yield	ΔYield (in Bps)
3M USD LIBOR	0.247	0.002
3M EUR EURIBOR	-0.448	0.005
3M GBP LIBOR	0.084	0.003
3Y USD SWAP	0.222	0.003
5Y USD SWAP	0.309	0.003
10Y USD SWAP	0.582	0.013
30Y USD SWAP	0.818	0.016

USD CORPORATES - 30 DAYS SPREAD

FIXED INCOME SPREADS

	Spread	ΔSpread (in Bps)
USD 3M vs 10Y Spread	0.480	0.024
USD 2Y vs 10Y Spread	0.439	0.017
USD IG Spread	1.440	0.000
USD HY Spread	4.980	-0.030
EU vs US 10Y Spread	-1.037	0.021
EU vs US 2Y Spread	-0.798	0.022
EM vs Benchmark Spread	349.000	0.200

EU VS US - 30 DAYS SPREAD


GLOBAL COMMODITIES MARKET

	Last Price	Daily %
Commodity Index	68.37	0.33%

Energy

WTI Crude Future	41.1	-0.46%
Brent Crude Future	43.13	-0.48%
NYMEX Gasoline	127.58	-0.70%
NYMEX Heat Oil	124.76	-0.69%
ICE Gasoil	373.75	-0.27%
NYMEX Natural Gas	1.765	-2.38%

Precious Metals

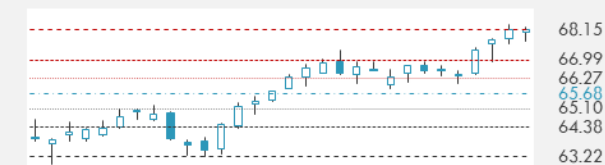
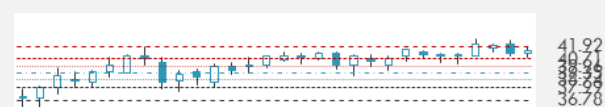
Gold Spot \$/Oz	1934.7	1.72%
Silver Spot \$/Oz	24.0173	5.49%
Platinum Spot \$/Oz	941.03	2.41%
Palladium Spot \$/Oz	2242.34	0.69%
Gold Future	1958.4	1.72%
Silver Future	24.165	5.75%
Platinum Future	977	2.20%
Palladium Future	2318	1.04%

Base Metals

LME Aluminum	1700	-0.06%
LME Copper	6415	-1.98%
LME Zinc	2218	-0.96%
LME Nickel	13656	-0.24%
LME Lead	1818	-0.44%
LME Tin	17657	-0.88%

Agricultural

Corn CBT	334.5	-0.15%
Wheat CBT	534.25	-0.97%
Soybeans CBT	897.75	-0.17%
Bean Meal CBT	298.2	-0.13%
Rough Rice CBT	11.755	-0.42%
MDE Palm Oil	2725	-1.91%
Soybean CBT	30.24	-0.43%
Coffee ICE	108.4	0.00%
Sugar #11 ICE	11.58	0.78%
Cotton #2 ICE	60.38	0.47%
Cocoa ICE	2224	0.00%
Ethanol CME	1.15	0.00%
Lumber CME	541.4	0.00%
Orange Juice ICE	124.5	0.00%
Live Cattle CME	105.1	0.00%
Feeder Cattle CME	142.75	0.00%
Lean Hogs CME	50.15	-1.71%

COMMODITY INDEX SUPPORT & RESISTANCE

WTI OIL 30 DAYS SUPPORT & RESISTANCE


- Oil edged lower after a weekly gain as investors weighed worsening relations between Washington and Beijing and the prospect of more supply against a weakening dollar and signs the virus is easing in the U.S.

Source: Bloomberg, Reuters

GOLD 30 DAYS SUPPORT & RESISTANCE

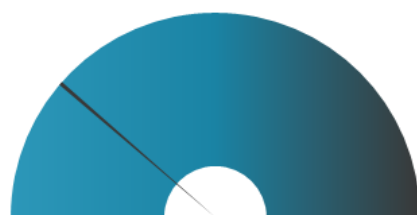
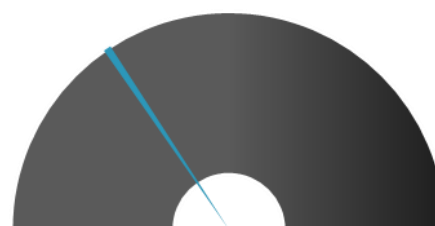
SILVER 30 DAYS SUPPORT & RESISTANCE


TOP 10 WINNERS

	Ticker	Last Price	Daily %
S&P 500 Stocks			
ADV MICRO DEVICE	AMD	69.4	16.50
FIRSTENERGY CORP	FE	29.48	7.59
DARDEN RESTAURAN	DRI	78.64	3.24
PULTEGROUP INC	PHM	42.62	3.22
TAKE-TWO INTERAC	TTWO	156.02	3.00
NRG ENERGY	NRG	34.19	2.89
SVB FINANCIAL GR	SIVB	230.43	2.46
NVR INC	NVR	3810.39	2.26
COMCAST CORP-A	CMCSA	43.35	2.02
STRYKER CORP	SYK	198.83	1.88

TOP 10 LOSERS

	Ticker	Last Price	Daily %
S&P 500 Stocks			
INTEL CORP	INTC	50.59	-16.24
KLA CORP	KLAC	188.21	-7.70
WESTERN DIGITAL	WDC	42.85	-7.17
XEROX HOLDINGS C	XRX	15.65	-6.90
KOHL'S CORP	KSS	20.86	-5.44
EQUIFAX INC	EFX	167.16	-5.37
QORVO INC	QRVO	111.92	-5.27
MICRON TECH	MU	50.02	-4.98
APPLIED MATERIAL	AMAT	60.62	-4.73
ALASKA AIR GROUP	ALK	35.06	-4.39

S&P 500 DISTRIBUTION

LOSERS
WINNERS
S&P VOLATILITY INDEX

LOW VOLATILITY
HIGH VOLATILITY

- Baidu App, the flagship mobile platform of Baidu, kicked off the official naming selection process for China's first Mars rover, which was launched into space on July 23 from Wenchang, as part of the Tianwen-1 Mars exploration mission. The app will leverage its expansive user base to allow netizens to contribute to the selection of the rover's name and view interactive content about the mission. The app is hosting the naming selection process on a designated Smart Mini Program.
- Comcast and Sinclair Broadcast Group have come to a multi-year renewal of their content carriage agreement. Financial terms weren't disclosed. Comcast is +1.7% premarket; SBGI is +1.6%. The deal covers continued retransmission consent for 78 Sinclair stations in 51 major markets across Comcast's cable footprint, along with the Tennis Channel, 18 Fox-branded regional sports networks, and YES Network.
- Honeywell's Earnings per share of \$1.26 beat estimates by \$0.02, but decreased 40% compared to the prior year as coronavirus-led lockdowns brought air travel to a halt and weighed on oil demand. Sales by segment: Aerospace -27%; Building Technologies -17%; Performance Materials and Technologies -17%; Safety and Productivity Solutions +1%. Bright spots: The company delivered \$500M in savings from the first phase of cost actions announced earlier this year, and developed a second phase of cost actions that, when combined with its previously announced plan, will generate \$1.4B-\$1.6B of cost savings during 2020.

KEY ECONOMIC INDICATORS

Country	Event	Surv (M)	Actual	Prior	Time
China	Industrial Profits YoY	--	11.50%	6.00%	4:30
Eurozone	M3 Money Supply YoY	9.30%	9.20%	8.90%	11:00
Germany	Ifo Business Climate	89.3	90.5	86.2	11:00
Germany	Ifo Expectations	93.4	97	91.4	11:00
Germany	Ifo Current Assessment	85	84.5	81.3	11:00
Japan	Capital Spending YoY	--	0.10%	4.30%	2:50
Japan	All Industry Activity Index MoM	-3.50%	-3.50%	-6.40%	7:30
Japan	Leading Index CI	--	78.4	79.3	8:00
Japan	Coincident Index	--	73.4	74.6	8:00
Japan	BOJ Summary of Opinions				2:50
Japan	BOJ Outright Bond Purchase 10~25 Years				4:10
United States	Durable Goods Orders	7.00%	--	15.70%	15:30
United States	Durables Ex Transportation	3.50%	--	3.70%	15:30
United States	Dallas Fed Manf. Activity	-4.9	--	-6.1	17:30
United States	Cap Goods Orders Nondef Ex Air	2.40%	--	1.60%	15:30
United States	Cap Goods Ship Nondef Ex Air	2.80%	--	1.50%	15:30
United States	"P&P Live!: Cli-fi, Literature, and...				0:00
United States	House in session				7:00
United States	Senate in session				7:00
United States	The National Press Club holds an event				7:00

Source: Bloomberg

Banque BEMO sal
Head Office - Private and Corporate Banking

 96 Pasteur Building, Pasteur Street, Medawar Area, P.O. Box: 16-6353, Beirut - Lebanon
 Tel: + 961 1 568 250 Fax: + 961 1 568 266

Wealth & Investment Management research@bemobank.com

 Beirut Central District Riad El Solh Square, Esseily Building Bloc A, 7th Floor Beirut - Lebanon
 Tel: + 961 1 992 600 Fax: + 961 1 983 368
www.bemobank.com
Disclaimer:

This report is published for information purposes only. The information herein has been compiled from, or based upon sources considered to be reliable (Bloomberg, SeekingAlpha, DailyStar...), but we do not guarantee or assume responsibility for its completeness and accuracy. This document should not be construed as a solicitation to take part in any investment, or as constituting any representation or warranty on our part. This report is not to be relied upon in substitution for the exercise of specialists.

We may not have taken any steps to ensure that the securities referred to in this report are suitable for any particular investor. The investments and services contained or referred to herein are not purported to be exhaustive, any person considering an investment should seek specialist advice on the suitability of an investment.

Nothing in this report constitutes investment, legal, accounting or tax advice, or a representation that any investment or strategy is suitable or appropriate to your individual circumstances, or otherwise constitutes a personal recommendation. Clients understand that it is their responsibility to seek legal and/or tax advice regarding the legal and tax consequences of their investment transactions. The consequences of any action taken on the basis of information contained herein are solely the responsibility of the recipient.

Investment instruments are subject to risk, including possible loss of principal amount invested. Past performance should not be taken as an indication or guarantee of future performance, and no representation or warranty, express or implied, is made regarding future performance. The value of securities and financial instruments is subject to exchange rate fluctuation that may have a positive or adverse effect on the price or income of such securities or financial instruments. Some investments mentioned in this report may have a high level of volatility. High volatility investments may experience sudden and large falls in their value causing losses when that investment is realized. Some investments may not be readily realizable and it may be difficult to sell or realize those investments, similarly it may prove difficult to obtain reliable information about the value, or risks, to which such an investment is exposed.

This report may provide the addresses of websites or references. We have not reviewed any such site and takes no responsibility for the content contained therein. Such address or reference is provided solely for convenience and information. Accessing such website through this report shall be at the recipients own risk.