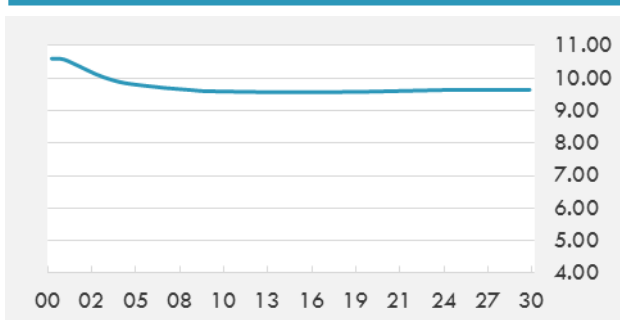


BEIRUT STOCK EXCHANGE

	Last	Daily %	YTD %	Dividend %
MSCI Lebanon	517.87	0.45%	-3.93%	
Development and Reconstruction				
Solidere A	6.71	1.36%	-4.14%	
Solidere B	6.54	1.71%	-9.04%	
Banking				
Audi Listed	4.64	0.00%	-5.31%	11.81%
BLC Listed	0.93	0.00%	0.00%	
BOB Listed	18.8	0.00%	0.00%	
Byblos Listed	1.36	0.74%	-0.73%	10.31%
BEMO Listed	1.55	0.00%	-1.27%	
BLOM Listed	9.05	0.00%	-2.16%	12.41%
Trading				
RYMCO	3.28	0.00%	0.00%	
Industrial				
Holcim	15.33	1.12%	-1.10%	
Ciments Blancs	2.55	0.00%	0.00%	

MSCI LEBANON INDEX - 30 DAYS CHART

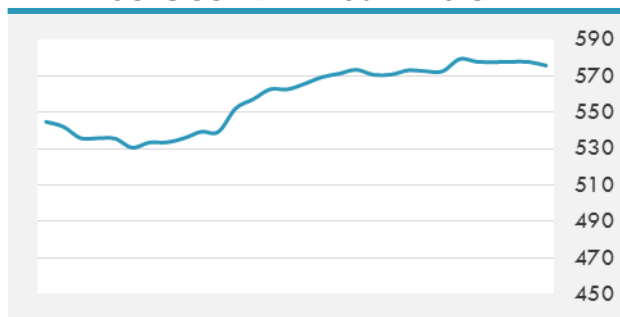
LEBANESE USD SOVEREIGN CURVE


- Moody's Investor Service Friday hailed the formation of Lebanon's government, but said it expected considerable challenges in implementing reforms. Elisa Parisi-Capone, a Moody's vice president, said in a statement that Lebanon is expected to implement "consolidation measures in order to unlock the \$11 billion CEDRE five-year investment package committed by international donors."

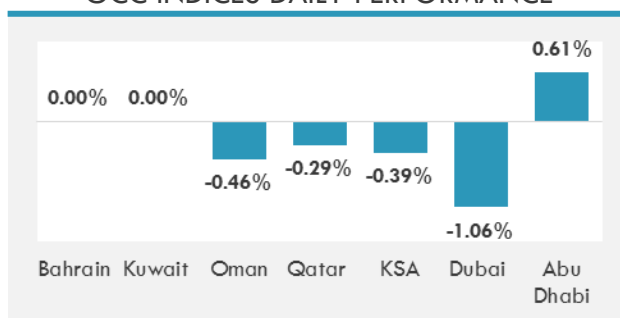
Source: Daily Star, Gulf Business

GCC EQUITY INDICES

	Last Price	Daily %	YTD %
Bahrain	1391.42	0.00%	4.43%
Kuwait	5205.99	0.00%	2.34%
Oman	4147.11	-0.46%	-4.06%
Qatar	10689.17	-0.29%	3.67%
KSA	8526.71	-0.39%	9.33%
Dubai	2540.25	-1.06%	0.49%
Abu Dhabi	5075.69	0.61%	3.74%

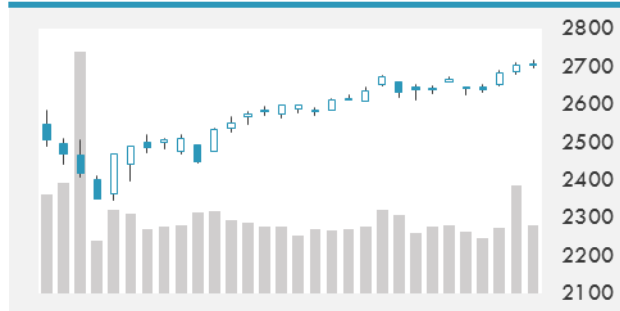
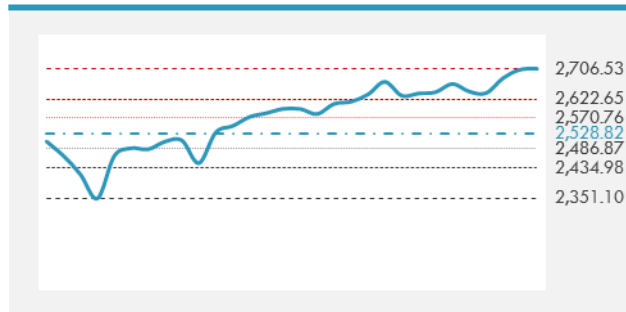
MSCI GCC INDEX - 30 DAYS CHART

LOCAL/GCC FOREIGN EXCHANGE

	Cross	Last Price
Lebanese Pound Spot	USD/LBP	1513.5
Bahraini Dinar Spot	USD/BHD	0.377
Kuwaiti Dinar Spot	USD/KWD	0.3031
Omani Rial Spot	USD/OMR	0.38499
Qatari Riyal Spot	USD/QAR	3.6522
Saudi Riyal Spot	USD/SAR	3.7504
UAE Dirham Spot	USD/AED	3.673

GCC INDICES DAILY PERFORMANCE


UNITED STATES EQUITY MARKET INDICES

	Last Price	Daily %	YTD %	Δ10D Vol
Major Indices				
Dow Jones	25063.89	0.26%	7.44%	-1.43%
S&P 500	2706.53	0.09%	7.97%	-1.28%
Nasdaq	7263.868	-0.25%	9.47%	-0.30%
Sectors Indices				
Discretionary	846.16	-1.77%	8.27%	1.94%
Staples	546.48	-0.27%	4.71%	-0.63%
Energy	479.44	1.83%	13.06%	-0.25%
Financials	432.1	0.51%	9.14%	-3.57%
Healthcare	1050.21	0.22%	4.90%	-1.22%
Industrials	604.94	0.20%	11.58%	-1.75%
IT	1170.2	0.61%	7.52%	-0.88%
Materials	335.49	0.45%	5.96%	-1.85%
Com. Services	152.23	-0.34%	9.69%	0.15%
Utilities	276.84	-0.30%	3.06%	0.35%
Real Estate	211.56	-0.67%	9.98%	2.66%

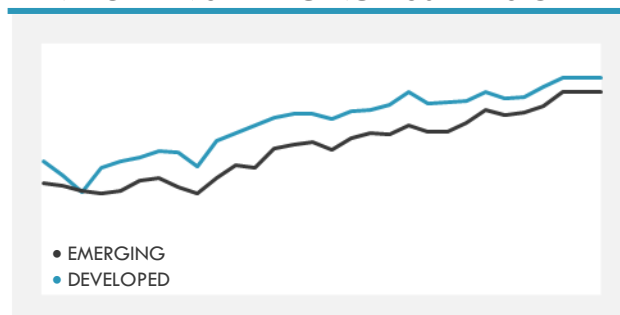
S&P 500 INDEX - 30 DAYS CHART

S&P 500 SUPPORT & RESISTANCE


- Wall Street was mixed on Friday, as optimism from a surge in January U.S. job growth was offset by a weaker-than-expected outlook from Amazon.com Inc that battered retail stocks.
- The benchmark Nikkei average closed marginally higher on the Tokyo Stock Exchange Friday, as investors weighed mixed results from a slew of major Japanese companies amid the earnings reporting season.

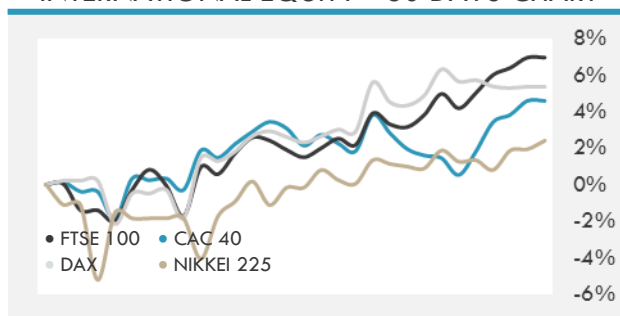
Source: Bloomberg, Financial Times, Reuters

INTERNATIONAL MARKETS INDICES

	Last Price	Daily %	YTD %	Δ10D Vol
World	1200.92	0.05%	7.84%	-0.02%
Developed	2029.55	0.05%	7.73%	-0.02%
Emerging	1050.2	0.03%	8.74%	0.01%
Frontier	2679.3	0.62%	7.73%	0.24%
Europe	121.5	0.31%	6.39%	-0.06%
Latin America	2950.43	0.10%	14.99%	-0.99%
Asia Pacific	156.25	-0.26%	6.51%	0.30%

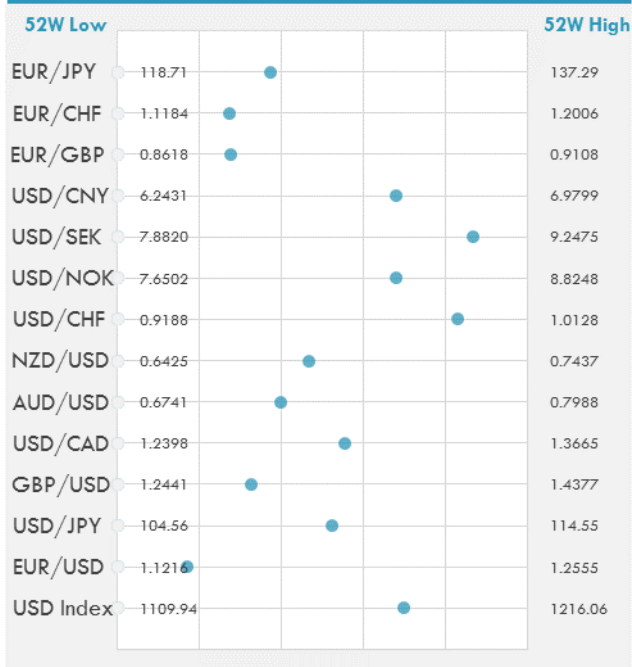
DEVELOPED VS EMERGING - 30 DAYS CHART

INTERNATIONAL EQUITY INDICES

	Last Price	Daily %	YTD %	Δ10D Vol
EuroStoxx 50	3171.12	0.37%	5.65%	-0.23%
FTSE 100	7020.22	0.74%	4.34%	0.51%
CAC 40	5019.26	0.53%	6.10%	-0.26%
DAX	11180.66	0.07%	5.89%	-0.64%
Swiss SMI	8996.36	0.30%	6.73%	0.23%
Nikkei 225	20883.77	0.46%	4.34%	-0.08%
CSI 300	3247.4	0.00%	7.86%	1.73%

INTERNATIONAL EQUITY - 30 DAYS CHART


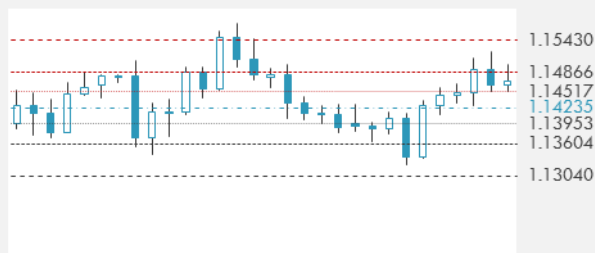
FOREIGN EXCHANGE MARKET

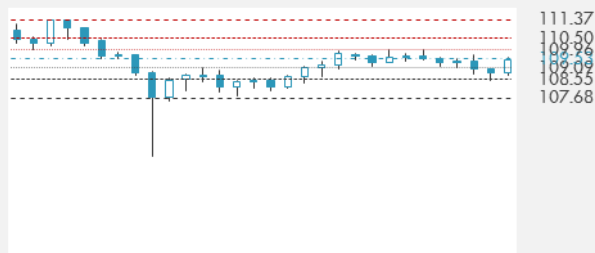
	Last Price	Daily %	Δ10D	Vol 25	ΔRR
Major USD Cross Rate					
USD Index	1183.82	0.16%	0.13%	-	
EUR/USD	1.1444	-0.10%	0.04%	0.078	
USD/JPY	109.77	0.25%	-0.09%	-0.665	
GBP/USD	1.3074	-0.04%	-0.16%	-0.508	
USD/CAD	1.3101	-0.01%	-0.82%	0.170	
AUD/USD	0.7236	-0.19%	-0.43%	-0.458	
NZD/USD	0.6896	-0.06%	0.19%	-0.358	
USD/CHF	0.9968	0.12%	0.09%	-0.313	
USD/NOK	8.4472	0.10%	-0.74%	0.230	
USD/SEK	9.0656	0.16%	0.03%	0.255	
USD/CNY	6.7422	0.00%	0.00%	-0.030	
Major EUR Cross Rate					
EUR/GBP	0.87533	-0.04%	-0.52%	0.445	
EUR/CHF	1.1407	0.02%	-0.04%	-0.330	
EUR/JPY	125.62	0.13%	-0.36%	-0.613	

DISTANCE FROM 52 WEEKS LOW/HIGH


- Australia's dollar fell against all its Group-of-10 peers as an unexpected slide in building approvals raised the prospect that the central bank may adopt a more dovish tone this week.
- Dollar climbs against its Group-of-10 peers after better-than-expected U.S. data underscored the strength of the world's largest economy. Trading is muted with some markets such as China shut for the Lunar New Year holiday.

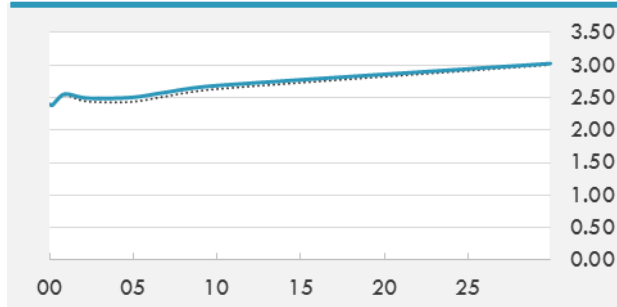
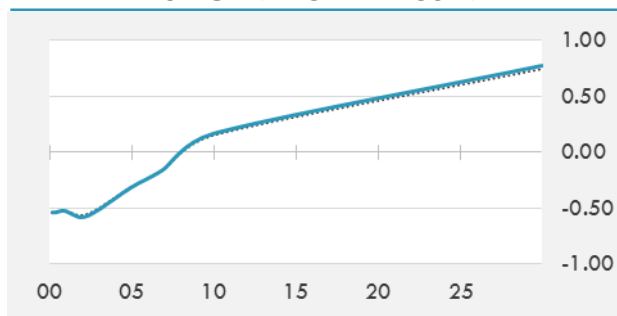
Source: Bloomberg, Financial Times, Reuters

EUR/USD 30 DAYS SUPPORT & RESISTANCE

GBP/USD 30 DAYS SUPPORT & RESISTANCE

USD/JPY 30 DAYS SUPPORT & RESISTANCE

USD/CAD 30 DAYS SUPPORT & RESISTANCE


GLOBAL BOND INDICES

	Yield	ΔYield (in Bps)
Benchmark Indices		
US 10 Years Benchmark	2.6842	0.055
EU 10 Years Benchmark	0.166	0.017
UK 10 Years Benchmark	1.248	0.029
Sovereign Bonds		
US Treasury Bond	2.619	0.053
Eurozone Sovereign Bond	0.5	0.067
Japan Sovereign Bond	-0.161	-0.007
Corporate Bonds		
US Corporate TR	3.943	0.036
US High Yield Bond TR	6.881	-0.020
EUR Aggregate Corporate TR	1.149	-0.005
EUR High Yield TR	4.913	0.021
USD Emerging Market IG & HY	5.547	0.005

US TREASURIES YIELD CURVE

EUR GENERIC YIELD CURVE


- Yields on shorter-dated U.S. Treasury notes jumped on Friday morning, flattening the yield curve, after government data showed job growth surged in January, just days after the Federal Reserve expressed caution about further interest rate hikes this year.
- Germany's long-dated government bond yields were just a whisker away from their lowest levels in over two years on Friday, a sign of the depth of pessimism about the world economy gripping financial markets.

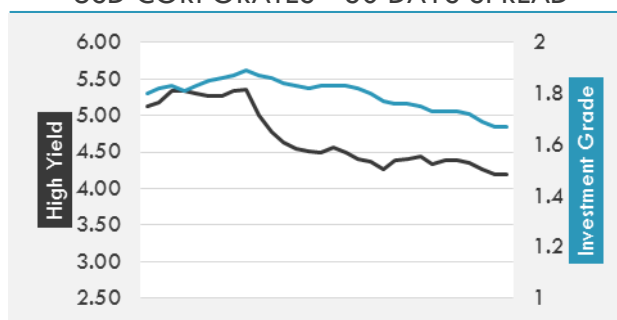
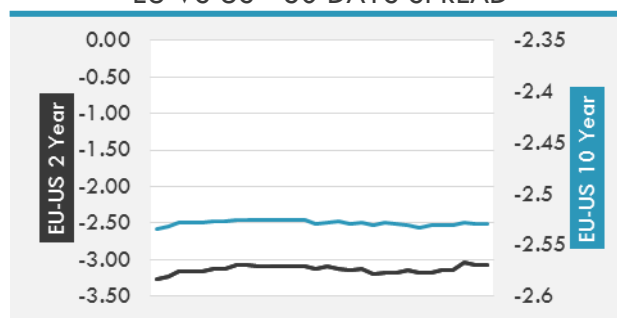
Source: Bloomberg, Financial Times

OVERNIGHT RATES - SWAPS

	Yield	ΔYield (in Bps)
3M USD LIBOR	2.73263	-0.0049
3M EUR EURIBOR	-0.308	0.0000
3M GBP LIBOR	0.9135	0.0015
3Y USD SWAP	2.6017	0.0570
5Y USD SWAP	2.5908	0.0609
10Y USD SWAP	2.7125	0.0543
30Y USD SWAP	2.838	0.0432

FIXED INCOME SPREADS

	Spread	ΔSpread (in Bps)
USD 3M vs 10Y Spread	0.28796	0.0554
USD 2Y vs 10Y Spread	0.17619	0.0066
USD IG Spread	1.67	(0.0200)
USD HY Spread	4.2	(0.0700)
EU vs US 10Y Spread	-2.5184	(0.0277)
EU vs US 2Y Spread	-3.083	(0.0378)
EM vs Benchmark Spread	269	(5.600)

USD CORPORATES - 30 DAYS SPREAD

EU VS US - 30 DAYS SPREAD


GLOBAL COMMODITIES MARKET

	Last Price	Daily %
Commodity Index	80.97	0.30%

Energy

WTI Crude Future	55.26	2.73%
Brent Crude Future	62.75	3.14%
NYMEX Gasoline	143.69	4.30%
NYMEX Heat Oil	191.27	1.88%
ICE Gasoil	576.75	-0.94%
NYMEX Natural Gas	2.734	-2.84%

Precious Metals

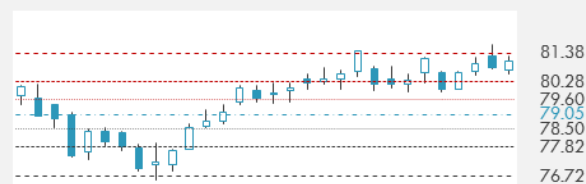
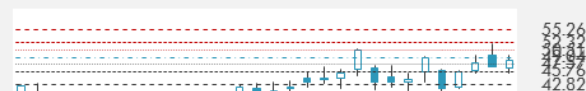
Gold Spot \$/Oz	1317.98	-0.25%
Silver Spot \$/Oz	15.9106	-0.94%
Platinum Spot \$/Oz	824.17	0.26%
Palladium Spot \$/Oz	1354.65	0.86%
Gold Future	1322.1	-0.23%
Silver Future	15.931	-0.88%
Platinum Future	826.7	0.24%
Palladium Future	1313.6	1.05%

Base Metals

LME Aluminum	1883	-1.41%
LME Copper	6139	-0.49%
LME Zinc	2777	2.13%
LME Nickel	12660	1.44%
LME Lead	2127	0.71%
LME Tin	20890	0.19%

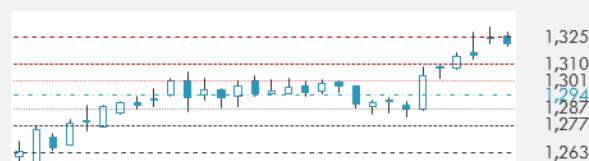
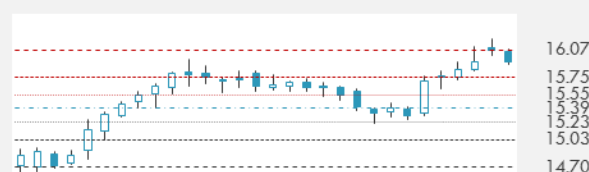
Agricultural

Corn CBT	378.25	0.46%
Wheat CBT	524.25	1.50%
Soybeans CBT	917.75	0.27%
Bean Meal CBT	311.8	0.58%
Rough Rice CBT	10.65	0.38%
MDE Palm Oil	2299	0.00%
Soybean CBT	29.89	-0.93%
Coffee ICE	103.7	-2.08%
Sugar #11 ICE	12.6	-1.02%
Cotton #2 ICE	73.64	-1.02%
Cocoa ICE	2168	0.00%
Ethanol CME	1.316	2.09%
Lumber CME	419.2	0.72%
Orange Juice ICE	122.25	1.79%
Live Cattle CME	126.275	-0.02%
Feeder Cattle CME	142.525	-0.02%
Lean Hogs CME	60.125	-0.17%

COMMODITY INDEX SUPPORT & RESISTANCE

WTI OIL 30 DAYS SUPPORT & RESISTANCE


- Oil prices rose about 3 percent on Friday on upbeat U.S. jobs data and signs that U.S. sanctions on Venezuelan exports have helped tighten supply, then extending gains after weekly data showed U.S. drillers cut the number of oil rigs..

Source: Bloomberg

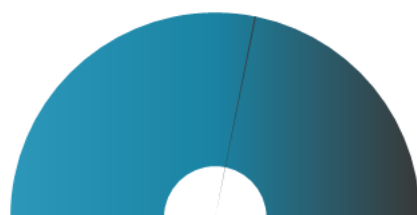
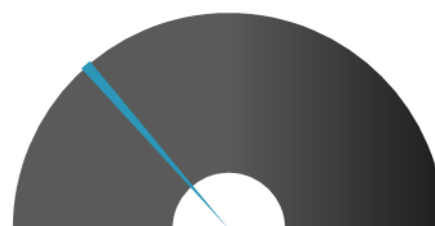
GOLD 30 DAYS SUPPORT & RESISTANCE

SILVER 30 DAYS SUPPORT & RESISTANCE


TOP 10 WINNERS

	Ticker	Last Price	Daily %
S&P 500 Stocks			
SYMANTEC CORP	SYMC	22.91	8.99
FMC CORP	FMC	85.83	7.56
AON PLC	AON	167.46	7.19
ZIMMER BIOMET HO	ZBH	116.6	6.43
WESTERN DIGITAL	WDC	47	4.47
MARTIN MAR MTLs	MLM	183.81	4.04
VISA INC-CLASS A	V	140.15	3.81
MICRON TECH	MU	39.6	3.61
EXXON MOBIL CORP	XOM	75.92	3.60
INTEL CORP	INTC	48.73	3.42

TOP 10 LOSERS

	Ticker	Last Price	Daily %
S&P 500 Stocks			
AMAZON.COM INC	AMZN	1626.23	-5.38
WESTROCK CO	WRK	38.7	-4.94
IDEXX LABS	IDXX	205.38	-3.48
VALERO ENERGY	VLO	85.26	-2.92
KOHLs CORP	KSS	66.69	-2.91
CIGNA CORP	CI	194.06	-2.88
COTY INC-CL A	COTY	7.54	-2.84
ACTIVISION BLIZZ	ATVI	46.01	-2.60
TARGET CORP	TGT	71.17	-2.51
L BRANDS INC	LB	27.15	-2.48

S&P 500 DISTRIBUTION

LOSERS
WINNERS
S&P VOLATILITY INDEX

LOW VOLATILITY
HIGH VOLATILITY

- General Electric Aviation, a unit of General Electric Co, has been awarded a \$517 million U.S. Army contract for the engineering and manufacturing development phase of the Improved Turbine Engine Program, the Pentagon said on Friday.
- Apple says it has fixed the FaceTime bug that let iPhone users see and hear others that haven't yet accepted a call. The software update will come next week, and Group FaceTime will be enabled at that time.
- General Motors Co said on Saturday it is negotiating "feasibility conditions" to invest 10 billion reais (\$2.73 billion) in Brazil from 2020 to 2024, after having warned last month that new investments would depend on returning to profit. The automaker also said it is completing an investment plan of 13 billion reais between 2014 and 2019.
- Ron Joyce, Canadian businessman and co-founder of coffee and donut chain Tim Horton's has died at the age of 88, according to a statement from the Joyce Family Foundation.
- Toyota Motor Corp on Friday reported a 6.6 percent fall in U.S. vehicle sales for January, hurt by lower demand for its Camry and Prius cars. The No.3 automaker in the United States by sales said it sold 156,021 vehicles in January, down from 167,056 vehicles a year earlier. Camry sales fell 3.4 percent, while Prius sales slumped 57 percent, the company said.
- U.S. electric vehicle maker Tesla Inc said it will start taking orders in China on Friday for a lower-priced version of its Model 3 car, as it seeks to accelerate China sales hit by trade friction between Washington and Beijing.

KEY ECONOMIC INDICATORS

Country	Event	Surv (M)	Actual	Prior	Time
Eurozone	PPI YoY	3.10%	--	4.00%	12:00
Eurozone	PPI MoM	-0.50%	--	-0.30%	12:00
Eurozone	Sentix Investor Confidence	-1.3	--	-1.5	11:30
Italy	CPI EU Harmonized YoY	0.80%	--	1.20%	12:00
Italy	CPI EU Harmonized MoM	-1.90%	--	-0.10%	12:00
Italy	CPI NIC incl. tobacco MoM	0.10%	--	-0.10%	12:00
Italy	CPI NIC incl. tobacco YoY	0.90%	--	1.10%	12:00
Japan	Monetary Base YoY	4.60%	4.70%	4.80%	1:50
Japan	Monetary Base End of period	¥500.3t	¥500.2t	¥504.2t	1:50
Japan	BOJ Outright Bond Purchase 10~25 Years				3:10
Japan	BOJ Outright Bond Purchase 3~5 Years				3:10
United Kingdom	Markit/CIPS UK Construction PMI	52.5	--	52.8	11:30
United States	Durable Goods Orders	1.50%	--	0.80%	17:00
United States	Factory Orders	0.30%	--	-2.10%	17:00
United States	Durables Ex Transportation	0.10%	--	-0.30%	17:00
United States	Cap Goods Orders Nondef Ex Air	0.10%	--	-0.60%	17:00
United States	Cap Goods Ship Nondef Ex Air	0.10%	--	-0.10%	17:00
United States	DDGS Production	--	--	1980k	22:00
United States	Factory Orders Ex Trans	--	--	0.30%	17:00
United States	Corn for Ethanol	--	--	461968k	22:00

Source: Bloomberg

Banque BEMO sal

Head Office - Private and Corporate Banking

96 Pasteur Building, Pasteur Street, Medawar Area, P.O. Box: 16-6353, Beirut - Lebanon
Tel: + 961 1 568 250 Fax: + 961 1 568 266

Wealth & Investment Management research@bemobank.com

Beirut Central District Riad El Solh Square, Esseily Building Bloc A, 7th Floor Beirut - Lebanon
Tel: + 961 1 992 600 Fax: + 961 1 983 368
www.bemobank.com

Disclaimer:

This report is published for information purposes only. The information herein has been compiled from, or based upon sources considered to be reliable (Bloomberg, SeekingAlpha, DailyStar...), but we do not guarantee or assume responsibility for its completeness and accuracy. This document should not be construed as a solicitation to take part in any investment, or as constituting any representation or warranty on our part. This report is not to be relied upon in substitution for the exercise of specialists.

We may not have taken any steps to ensure that the securities referred to in this report are suitable for any particular investor. The investments and services contained or referred to herein are not purported to be exhaustive, any person considering an investment should seek specialist advice on the suitability of an investment.

Nothing in this report constitutes investment, legal, accounting or tax advice, or a representation that any investment or strategy is suitable or appropriate to your individual circumstances, or otherwise constitutes a personal recommendation. Clients understand that it is their responsibility to seek legal and/or tax advice regarding the legal and tax consequences of their investment transactions. The consequences of any action taken on the basis of information contained herein are solely the responsibility of the recipient.

Investment instruments are subject to risk, including possible loss of principal amount invested. Past performance should not be taken as an indication or guarantee of future performance, and no representation or warranty, express or implied, is made regarding future performance. The value of securities and financial instruments is subject to exchange rate fluctuation that may have a positive or adverse effect on the price or income of such securities or financial instruments. Some investments mentioned in this report may have a high level of volatility. High volatility investments may experience sudden and large falls in their value causing losses when that investment is realized. Some investments may not be readily realizable and it may be difficult to sell or realize those investments, similarly it may prove difficult to obtain reliable information about the value, or risks, to which such an investment is exposed.

This report may provide the addresses of websites or references. We have not reviewed any such site and takes no responsibility for the content contained therein. Such address or reference is provided solely for convenience and information. Accessing such website through this report shall be at the recipients own risk.