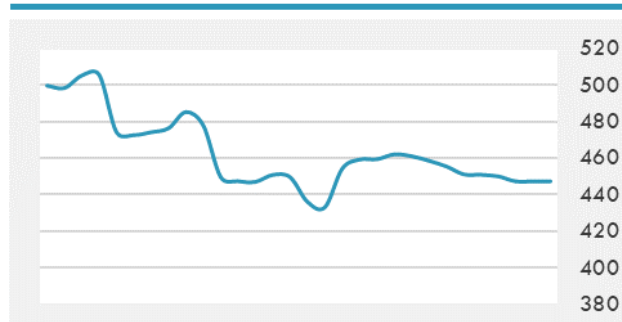
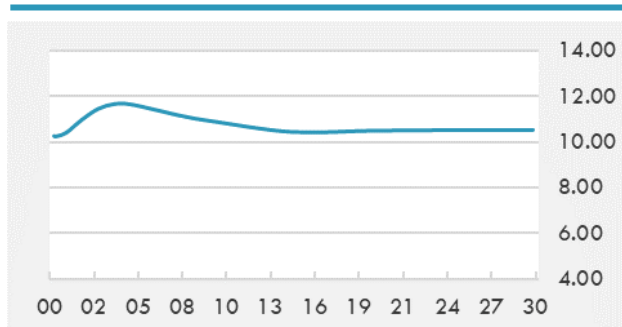


BEIRUT STOCK EXCHANGE

	Last	Daily %	YTD %	Dividend %
MSCI Lebanon	447.25	0.00%	-17.03%	
Development and Reconstruction				
Solidere A	5.05	0.00%	-27.86%	
Solidere B	5.03	0.00%	-30.04%	
Banking				
Audi Listed	4	0.00%	-18.37%	13.75%
BLC Listed	0.93	0.00%	0.00%	
BOB Listed	18.8	0.00%	0.00%	4.05%
Byblos Listed	1.25	0.00%	-8.76%	11.22%
BEMO Listed	1.5	0.00%	-4.46%	4.40%
BLOM Listed	8.5	0.00%	-8.11%	13.26%
Trading				
RYMCO	3.28	0.00%	0.00%	
Industrial				
Holcim	14.1	0.00%	-9.03%	18.18%
Ciments Blancs	2.7	0.00%	5.88%	

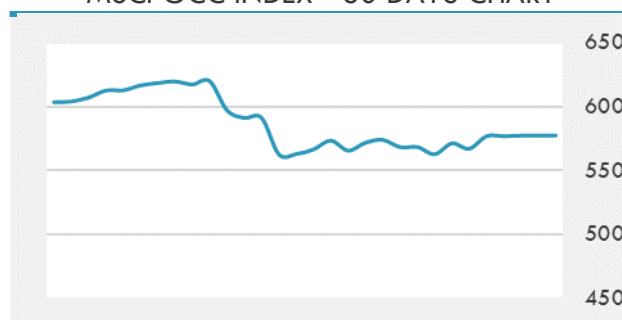
MSCI LEBANON INDEX - 30 DAYS CHART

LEBANESE USD SOVEREIGN CURVE


- The government's ultimate goal is to cut the deficit to 4 percent of GDP in the coming three to four years, the premier's top economic adviser said Friday, adding that this target was attainable. "The 2019 budget sets a deficit reduction to GDP by 4 percent. Two percent comes from reduction in spending and the other two from an increase in revenues," Nadim Munla told a group of reporters at the Grand Serail.

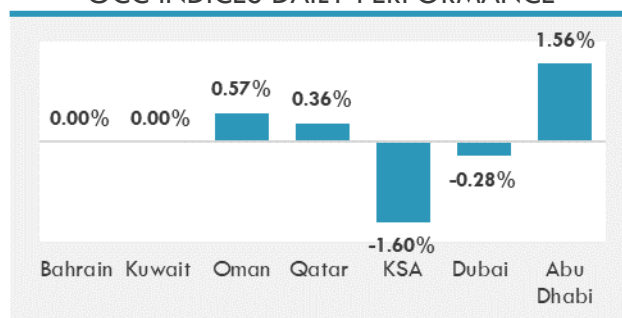
Source: Daily Star, Gulf Business, Mubasher, Bloomberg, Businessnews LB

GCC EQUITY INDICES

	Last Price	Daily %	YTD %
Bahrain	1434.62	0.00%	7.28%
Kuwait	5764.59	0.00%	13.49%
Oman	3941.21	0.57%	-9.01%
Qatar	9931.94	0.36%	-0.25%
KSA	8413.88	-1.60%	8.81%
Dubai	2599.7	-0.28%	3.58%
Abu Dhabi	4866.18	1.56%	1.80%

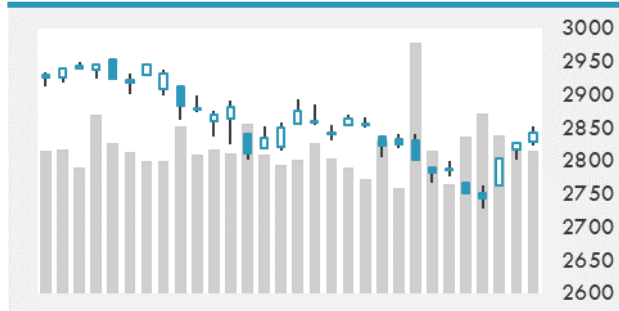
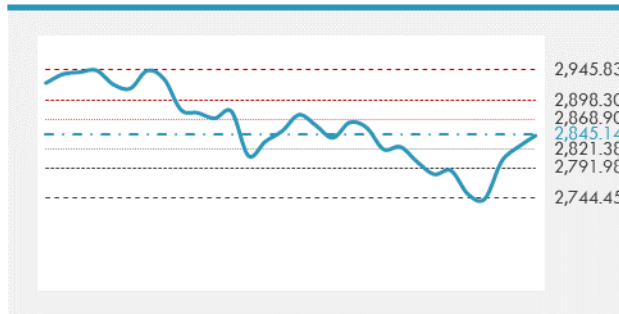
MSCI GCC INDEX - 30 DAYS CHART

LOCAL/GCC FOREIGN EXCHANGE

	Cross	Last Price
Lebanese Pound Spot	USD/LBP	1513.5
Bahraini Dinar Spot	USD/BHD	0.37702
Kuwaiti Dinar Spot	USD/KWD	0.304
Omani Rial Spot	USD/OMR	0.38499
Qatari Riyal Spot	USD/QAR	3.6549
Saudi Riyal Spot	USD/SAR	3.7502
UAE Dirham Spot	USD/AED	3.6729

GCC INDICES DAILY PERFORMANCE


UNITED STATES EQUITY MARKET INDICES

	Last Price	Daily %	YTD %	Δ10D Vol
Major Indices				
Dow Jones	25720.66	0.71%	10.26%	-0.68%
S&P 500	2843.49	0.61%	13.43%	-0.95%
Nasdaq	7615.553	0.53%	14.77%	-1.28%
Sectors Indices				
Discretionary	899.40	0.50%	15.09%	-1.01%
Staples	593.26	0.81%	13.68%	0.66%
Energy	447.85	1.73%	5.61%	-2.59%
Financials	449.52	0.37%	13.54%	-1.99%
Healthcare	1037.29	0.32%	3.61%	-0.05%
Industrials	630.22	0.01%	16.24%	-2.41%
IT	1308.5	1.09%	20.23%	-1.41%
Materials	356.7	1.13%	12.66%	-2.57%
Com. Services	156.67	0.44%	12.89%	0.19%
Utilities	304.8	0.44%	13.47%	-0.34%
Real Estate	230.38	0.15%	19.77%	-0.16%

S&P 500 INDEX - 30 DAYS CHART

S&P 500 SUPPORT & RESISTANCE


- U.S. stocks rose in early trading Thursday after President Donald Trump said he'll decide whether to enact tariffs on additional Chinese imports after the G-20 summit at the end of the month. The U.S. trade deficit narrowed in April as exports and imports tumbled.
- Stoxx 600 falls as much as 0.2% and hits a session low before paring losses, in volatile trading following ECB's rate decision and Mario Draghi's comments.
- Asian stocks are in holding mode Friday -- ahead of the key U.S. jobs report and Trump administration negotiations with Mexico that seem primed for a weekend tweet storm.

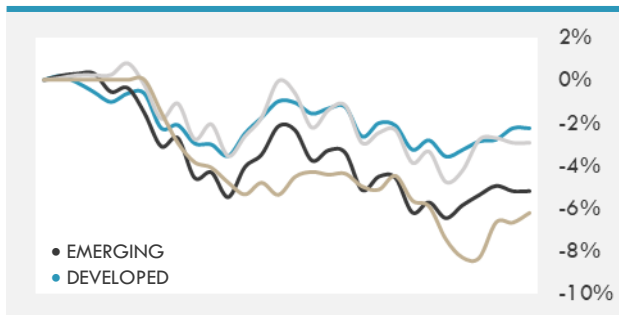
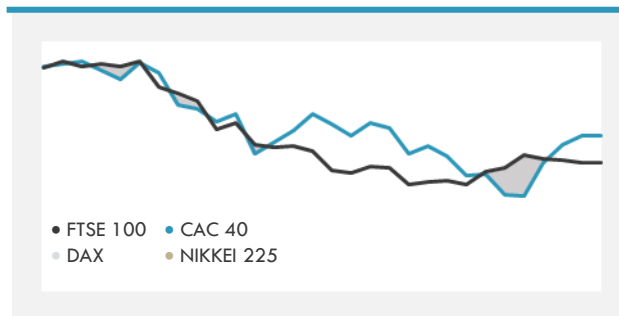
Source: Bloomberg, Financial Times, Reuters

INTERNATIONAL MARKETS INDICES

	Last Price	Daily %	YTD %	Δ10D Vol
World	1233.25	0.33%	10.75%	-0.01%
Developed	2104.18	0.40%	11.69%	0.03%
Emerging	1002.75	-0.19%	3.83%	0.31%
Frontier	2691.18	0.22%	8.21%	-0.17%
Europe	126.12	-0.02%	10.44%	-0.49%
Latin America	2712.58	0.44%	5.72%	-1.28%
Asia Pacific	153.58	-0.24%	4.69%	0.09%

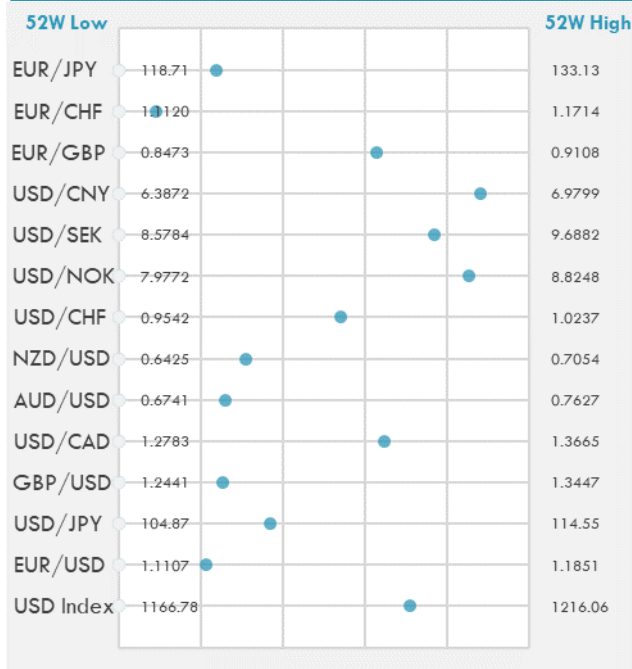
INTERNATIONAL EQUITY INDICES

	Last Price	Daily %	YTD %	Δ10D Vol
EuroStoxx 50	3338.41	-0.05%	11.23%	-0.57%
FTSE 100	7259.85	0.55%	7.90%	-2.11%
CAC 40	5278.43	-0.26%	11.58%	-0.53%
DAX	11953.14	-0.23%	13.20%	-0.20%
Swiss SMI	9682.29	0.25%	14.86%	-0.43%
Nikkei 225	20874.87	0.49%	4.30%	0.03%
CSI 300	3564.68	0.00%	18.40%	0.96%

DEVELOPED VS EMERGING - 30 DAYS CHART

INTERNATIONAL EQUITY - 30 DAYS CHART


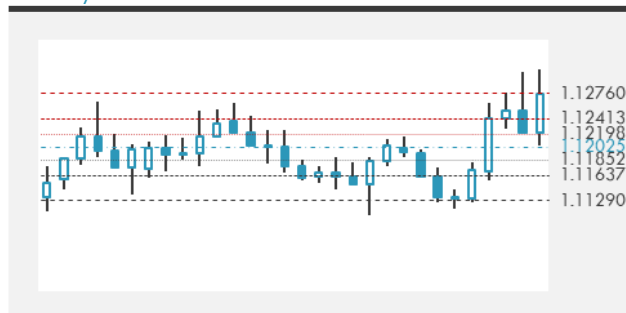
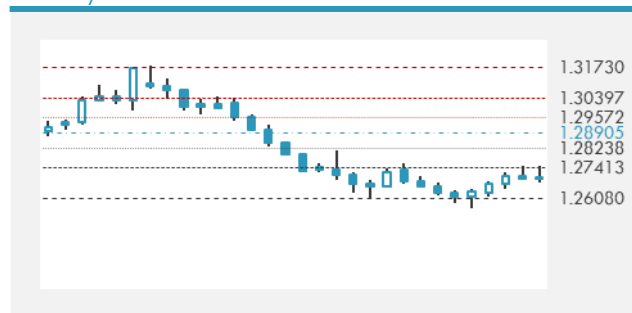
FOREIGN EXCHANGE MARKET

	Last Price	Daily %	Δ10D	Vol 25	ΔRR
Major USD Cross Rate					
USD Index	1201.81	0.19%	0.09%	-	
EUR/USD	1.1265	-0.10%	0.02%	0.510	
USD/JPY	108.43	0.03%	-0.15%	-0.960	
GBP/USD	1.2697	0.02%	-0.37%	0.123	
USD/CAD	1.3354	-0.06%	-0.05%	0.130	
AUD/USD	0.6972	-0.07%	-0.09%	-0.210	
NZD/USD	0.662	-0.03%	-0.09%	-0.173	
USD/CHF	0.9918	0.06%	-0.12%	-0.810	
USD/NOK	8.7008	0.11%	-0.07%	-0.093	
USD/SEK	9.4313	0.13%	-0.86%	0.288	
USD/CNY	6.9093	0.00%	0.00%	0.693	
Major EUR Cross Rate					
EUR/GBP	0.88722	-0.12%	0.13%	0.183	
EUR/CHF	1.11731	-0.06%	-0.12%	-0.648	
EUR/JPY	122.14	-0.07%	-0.03%	-0.560	

DISTANCE FROM 52 WEEKS LOW/HIGH


- The dollar headed for a weekly decline as investors largely stayed on the sidelines Friday, waiting for the outcome of the U.S.-Mexico tariff talks and the release of the U.S. payrolls data for May.
- The yen reversed its earlier advance against the dollar as a report that the U.S. may consider delaying the implementation of tariffs on Mexico helped weigh on havens like the Japanese currency and Treasuries, and stocks received a boost.

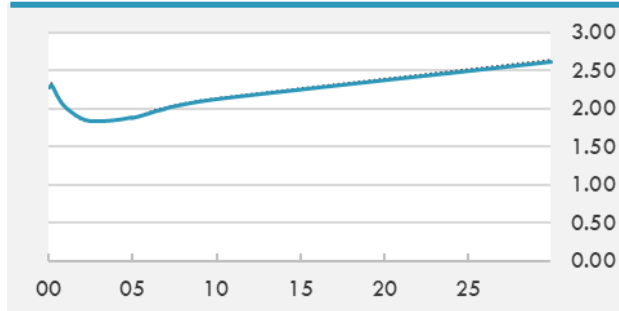
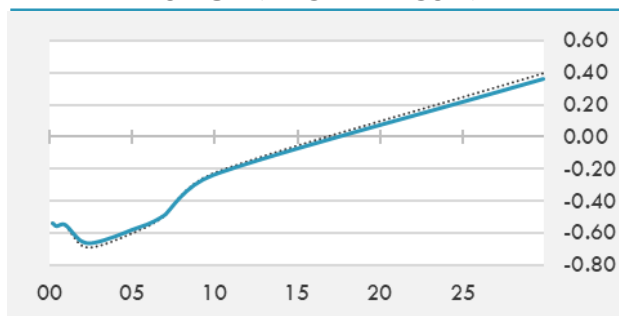
Source: Bloomberg, Financial Times, Reuters

EUR/USD 30 DAYS SUPPORT & RESISTANCE

GBP/USD 30 DAYS SUPPORT & RESISTANCE

USD/JPY 30 DAYS SUPPORT & RESISTANCE

USD/CAD 30 DAYS SUPPORT & RESISTANCE


GLOBAL BOND INDICES

	Yield	ΔYield (in Bps)
Benchmark Indices		
US 10 Years Benchmark	2.1174	0.046
EU 10 Years Benchmark	-0.239	-0.038
UK 10 Years Benchmark	0.825	-0.038
Sovereign Bonds		
US Treasury Bond	2.049	0.039
Eurozone Sovereign Bond	0.17	-0.048
Japan Sovereign Bond	-0.2	-0.027
Corporate Bonds		
US Corporate TR	3.409	0.022
US High Yield Bond TR	6.399	-0.216
EUR Aggregate Corporate TR	0.752	-0.059
EUR High Yield TR	4.326	-0.151
USD Emerging Market IG & HY	5.175	-0.074

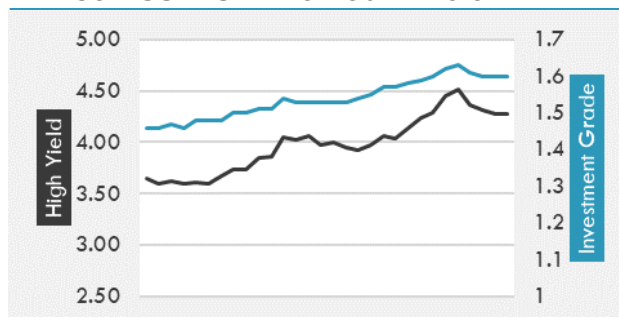
US TREASURIES YIELD CURVE

EUR GENERIC YIELD CURVE


- According to Bank of America, history shows the Fed generally shifts its balance of risks to the downside at one meeting and then cuts rates at the next one, which puts the end of July in play this year. Rates are typically lowered by half a percentage point in the first month of a cutting cycle, but that seems extreme now, given that the Fed's target rate of 2.50% is low by historical standards. And once the Fed starts cutting rates, it doesn't stop at just one.

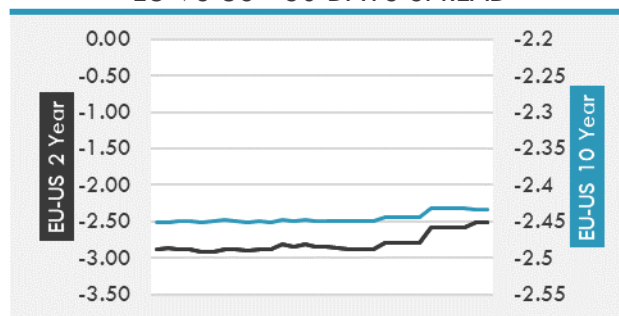
Source: Bloomberg, Financial Times, Economic times, Reuters

OVERNIGHT RATES - SWAPS

	Yield	ΔYield (in Bps)
3M USD LIBOR	2.47163	-0.0069
3M EUR EURIBOR	-0.32	0.0030
3M GBP LIBOR	0.79575	-0.0015
3Y USD SWAP	1.8832	0.0815
5Y USD SWAP	1.9114	0.0785
10Y USD SWAP	2.1108	0.0838
30Y USD SWAP	2.3421	0.0926

USD CORPORATES - 30 DAYS SPREAD

FIXED INCOME SPREADS

	Spread	ΔSpread (in Bps)
USD 3M vs 10Y Spread	-0.19332	0.0677
USD 2Y vs 10Y Spread	0.2367	0.0013
USD IG Spread	1.6	(0.0300)
USD HY Spread	4.27	(0.2500)
EU vs US 10Y Spread	-2.3405	(0.0135)
EU vs US 2Y Spread	-2.5055	0.0759
EM vs Benchmark Spread	268.2	(5.500)

EU VS US - 30 DAYS SPREAD


GLOBAL COMMODITIES MARKET

	Last Price	Daily %
Commodity Index	77.32	0.27%

Energy

WTI Crude Future	53.3	1.35%
Brent Crude Future	62.52	1.38%
NYMEX Gasoline	172.82	1.21%
NYMEX Heat Oil	180.56	0.97%
ICE Gasoil	554	2.21%
NYMEX Natural Gas	2.339	0.65%

Precious Metals

Gold Spot \$/Oz	1332.5	-0.21%
Silver Spot \$/Oz	14.8862	-0.05%
Platinum Spot \$/Oz	804.99	0.03%
Palladium Spot \$/Oz	1353.45	0.00%
Gold Future	1336.6	-0.45%
Silver Future	14.87	-0.23%
Platinum Future	804.3	0.07%
Palladium Future	1346.8	-0.17%

Base Metals

LME Aluminum	1776	0.28%
LME Copper	5808	0.02%
LME Zinc	2503	1.67%
LME Nickel	11666	-0.47%
LME Lead	1890	1.34%
LME Tin	19250	0.39%

Agricultural

Corn CBT	418.75	-0.42%
Wheat CBT	502.25	-1.52%
Soybeans CBT	867	-0.20%
Bean Meal CBT	314.9	-0.32%
Rough Rice CBT	11.725	-0.09%
MDE Palm Oil	2050	-0.29%
Soybean CBT	27.79	0.11%
Coffee ICE	102.05	0.00%
Sugar #11 ICE	12.51	0.00%
Cotton #2 ICE	66.89	0.33%
Cocoa ICE	2432	0.00%
Ethanol CME	1.488	0.00%
Lumber CME	314.4	0.00%
Orange Juice ICE	107.3	0.00%
Live Cattle CME	104.8	0.00%
Feeder Cattle CME	139.275	0.00%
Lean Hogs CME	86.35	0.09%

COMMODITY INDEX SUPPORT & RESISTANCE

WTI OIL 30 DAYS SUPPORT & RESISTANCE


- Oil extended its recovery from a five-month low as reports that Washington may engage more with its trade foes eased fears of slumping crude demand.
- Gold is poised for the biggest weekly advance in six months as investors await key employment numbers from the U.S. later Friday.

Source: Bloomberg, Reuters

GOLD 30 DAYS SUPPORT & RESISTANCE

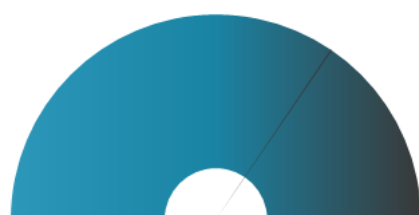
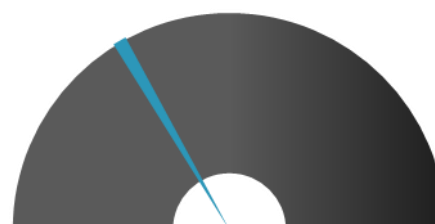
SILVER 30 DAYS SUPPORT & RESISTANCE


TOP 10 WINNERS

	Ticker	Last Price	Daily %
S&P 500 Stocks			
ADV MICRO DEVICE	AMD	31.82	7.86
INTL FLVR & FRAG	IFF	148.52	5.22
TECHNIPFMC PLC	FTI	22.34	4.10
SHERWIN-WILLIAMS	SHW	466.56	3.73
OCCIDENTAL PETE	OXY	49.04	3.39
COTY INC-CL A	COTY	13.51	3.37
BROWN-FORMAN -B	BF/B	55.87	3.27
BAKER HUGHES A	BHGE	22.95	3.24
CENTURYLINK INC	CTL	10.48	3.05
APACHE CORP	APA	28.84	2.85

TOP 10 LOSERS

	Ticker	Last Price	Daily %
S&P 500 Stocks			
L BRANDS INC	LB	22.71	-4.14
CORTEVA INC	CTVA	26.9	-3.96
MACERICH CO	MAC	35.91	-3.75
VERTEX PHARM	VRTX	167.75	-3.19
CAPRI HOLDINGS L	CPRI	33.95	-3.17
DUPONT DE NEMOUR	DD	72.66	-2.94
NORDSTROM INC	JWN	31.05	-2.85
MACY'S INC	M	20.48	-2.75
GAP INC/THE	GPS	17.98	-2.49
ARISTA NETWORKS	ANET	257.18	-2.45

S&P 500 DISTRIBUTION

LOSERS
WINNERS
S&P VOLATILITY INDEX

LOW VOLATILITY
HIGH VOLATILITY

- Uber Copter provides on-demand transportation from Lower Manhattan to JFK airport for an average price of \$200 to \$225 per person. The service launches July 9.
- Apple could purchase autonomous shuttle startup Drive.ai, according to The Information sources. Drive.ai was last valued at \$200M two years ago and has raised \$77M in private funding.
- JPMorgan Chase is calling it quits on new digital-banking app, Finn, that it hoped would attract younger customers. The U.S.'s largest bank started notifying clients that it's shutting the no-fee banking brand and transferring their funds to new Chase checking and savings accounts, the Wall Street Journal reported. Finn, which was rolled out nationally about a year ago, offered customers a digital app loaded with features as well as some branch access.
- Google acquires the business intelligence and big data analytics startup for \$2.6B in cash to add to Google Cloud. Looker was last valued at \$1.6B during a \$103M private funding round.
- Canada's government has recognized BlackBerry as a benchmark for trusted technology as the company announced support for Canada's Digital Charter. Innovation Minister Navdeep Bains unveiled the Digital Charter as a guideline for the country on data and the digital economy.
- Volkswagen plans to build 36K EV charging points in Europe by 2025 as part of a €250M investment in network infrastructure. The charging network will include VW sites and dealerships. Some fast charging infrastructure will be built in urban areas and along the Autobahn. The German automaker also plans to offer technology for private home installations, where it sees about 70% of all charging taking place.

KEY ECONOMIC INDICATORS

Country	Event	Surv (M)	Actual	Prior	Time
Canada	Unemployment Rate	5.70%	--	5.70%	15:30
Canada	Net Change in Employment	5.0k	--	106.5k	15:30
China	Foreign Reserves	\$3090.00b	--	\$3094.95b	
France	Industrial Production MoM	0.30%	--	-0.90%	9:45
France	Industrial Production YoY	1.00%	--	-0.90%	9:45
France	Manufacturing Production MoM	--	--	-1.00%	9:45
France	Manufacturing Production YoY	--	--	0.50%	9:45
Germany	Industrial Production SA MoM	-0.50%	-1.90%	0.50%	9:00
Germany	Industrial Production WDA YoY	-0.40%	-1.80%	-0.90%	9:00
Germany	Trade Balance	19.5b	17.9b	22.7b	9:00
Italy	Retail Sales MoM	--	--	-0.30%	11:00
Italy	Retail Sales YoY	--	--	-3.30%	11:00
Japan	Labor Cash Earnings YoY	-0.70%	-0.10%	-1.90%	2:30
United Kingdom	Halifax House Prices MoM	0.00%	--	1.10%	10:30
United Kingdom	Halifax House Price 3Mths/Year	5.00%	--	5.00%	10:30
United States	Change in Nonfarm Payrolls	175k	--	263k	15:30
United States	Unemployment Rate	3.60%	--	3.60%	15:30
United States	Wholesale Inventories MoM	0.70%	--	0.70%	17:00
United States	Baker Hughes U.S. Rig Count	986	--	984	20:00
United States	Change in Manufact. Payrolls	3k	--	4k	15:30

Source: Bloomberg

Banque BEMO sal

Head Office - Private and Corporate Banking

 96 Pasteur Building, Pasteur Street, Medawar Area, P.O. Box: 16-6353, Beirut - Lebanon
 Tel: + 961 1 568 250 Fax: + 961 1 568 266

Wealth & Investment Management research@bemobank.com

 Beirut Central District Riad El Solh Square, Esseily Building Bloc A, 7th Floor Beirut - Lebanon
 Tel: + 961 1 992 600 Fax: + 961 1 983 368
www.bemobank.com

Disclaimer:

This report is published for information purposes only. The information herein has been compiled from, or based upon sources considered to be reliable (Bloomberg, SeekingAlpha, DailyStar...), but we do not guarantee or assume responsibility for its completeness and accuracy. This document should not be construed as a solicitation to take part in any investment, or as constituting any representation or warranty on our part. This report is not to be relied upon in substitution for the exercise of specialists.

We may not have taken any steps to ensure that the securities referred to in this report are suitable for any particular investor. The investments and services contained or referred to herein are not purported to be exhaustive, any person considering an investment should seek specialist advice on the suitability of an investment.

Nothing in this report constitutes investment, legal, accounting or tax advice, or a representation that any investment or strategy is suitable or appropriate to your individual circumstances, or otherwise constitutes a personal recommendation. Clients understand that it is their responsibility to seek legal and/or tax advice regarding the legal and tax consequences of their investment transactions. The consequences of any action taken on the basis of information contained herein are solely the responsibility of the recipient.

Investment instruments are subject to risk, including possible loss of principal amount invested. Past performance should not be taken as an indication or guarantee of future performance, and no representation or warranty, express or implied, is made regarding future performance. The value of securities and financial instruments is subject to exchange rate fluctuation that may have a positive or adverse effect on the price or income of such securities or financial instruments. Some investments mentioned in this report may have a high level of volatility. High volatility investments may experience sudden and large falls in their value causing losses when that investment is realized. Some investments may not be readily realizable and it may be difficult to sell or realize those investments, similarly it may prove difficult to obtain reliable information about the value, or risks, to which such an investment is exposed.

This report may provide the addresses of websites or references. We have not reviewed any such site and takes no responsibility for the content contained therein. Such address or reference is provided solely for convenience and information. Accessing such website through this report shall be at the recipients own risk.