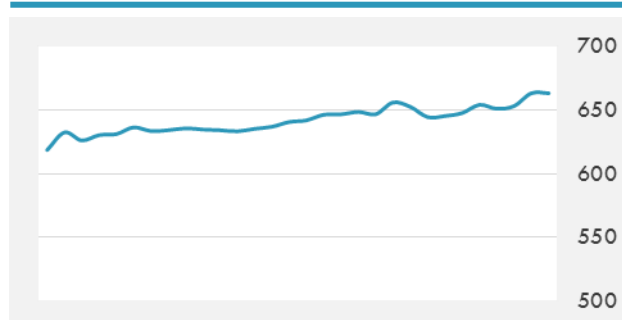
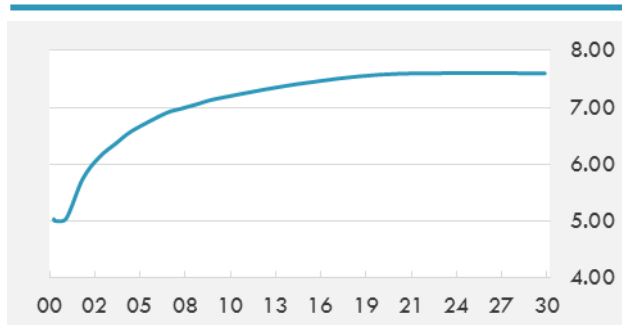


BEIRUT STOCK EXCHANGE

	Last	Daily %	YTD %	Dividend %
MSCI Lebanon	663.35	1.54%	1.39%	
Development and Reconstruction				
Solidere A	8.11	1.88%	1.25%	
Solidere B	8.24	4.57%	3.26%	
Banking				
Audi Listed	5.99	4.17%	4.17%	8.32%
BLC Listed	0.93	0.00%	0.00%	
BOB Listed	18.8	0.00%	0.00%	3.52%
Byblos Listed	1.6	1.27%	0.00%	8.27%
BEMO Listed	1.3	0.00%	0.00%	4.07%
BLOM Listed	11.67	0.00%	0.26%	8.49%
Trading				
RYMCO	3.25	0.00%	0.00%	
Industrial				
Holcim	14.46	0.00%	0.00%	16.51%
Ciments Blancs	2.25	0.00%	0.00%	

MSCI LEBANON INDEX - 30 DAYS CHART

LEBANESE USD SOVEREIGN CURVE


- Lebanon's private sector continued to reel from political instability in December of 2017, BLOM PMI said Thursday. "Lebanon's Purchasing Managers' Index ended the year with further contraction following the continuous instability on the Lebanese political scene and signaling a worsening activity within the private sector," BLOM Bank explained.
- Lebanon's banking sector saw significant growth in the first 10 months of 2017, according to Bank Audi's Lebanon Weekly Monitor. The reported growth in assets was prior to Prime Minister Saad Hariri's resignation on Nov. 4.

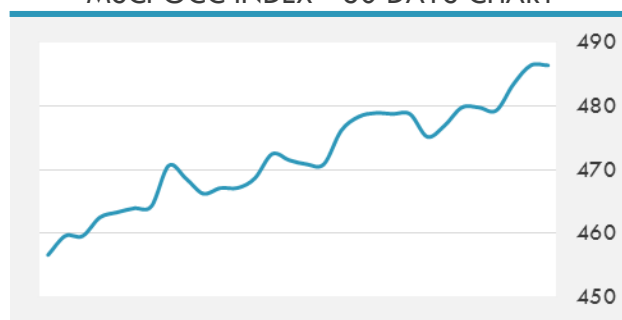
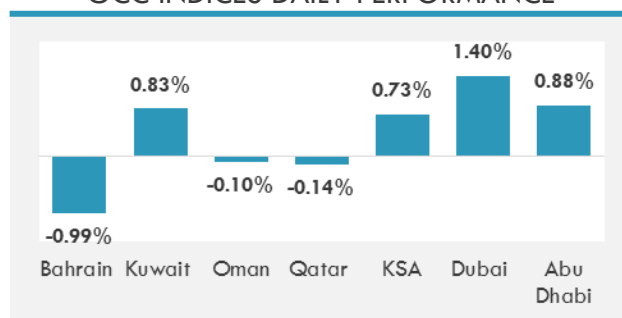
Source: Daily Star, Gulf Base

GCC EQUITY INDICES

	Last Price	Daily %	YTD %
Bahrain	1312.33	-0.99%	-1.46%
Kuwait	6454.16	0.83%	0.72%
Oman	5088.72	-0.10%	0.11%
Qatar	8608.31	-0.14%	1.26%
KSA	7224.29	0.73%	0.70%
Dubai	3458.79	1.40%	2.77%
Abu Dhabi	4481.3	0.88%	3.41%

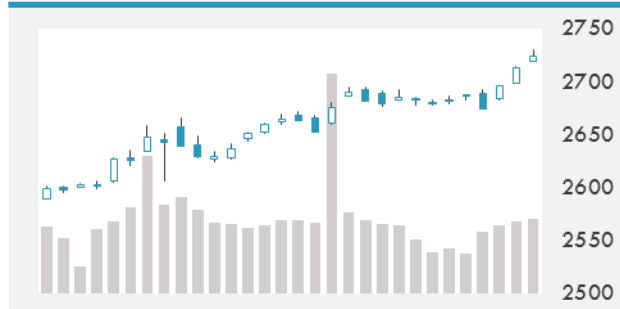
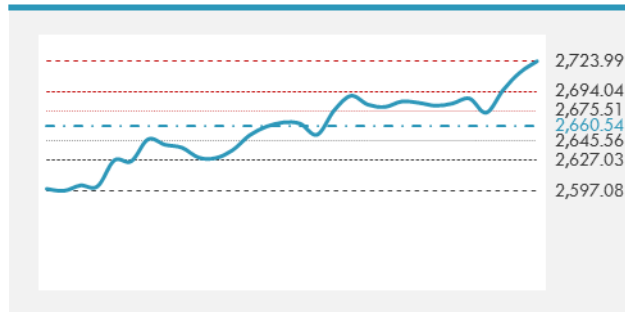
LOCAL/GCC FOREIGN EXCHANGE

	Cross	Last Price
Lebanese Pound Spot	USD/LBP	1513.04
Bahraini Dinar Spot	USD/BHD	0.37709
Kuwaiti Dinar Spot	USD/KWD	0.30155
Omani Rial Spot	USD/OMR	0.38491
Qatari Riyal Spot	USD/QAR	3.6675
Saudi Riyal Spot	USD/SAR	3.7504
UAE Dirham Spot	USD/AED	3.6731

MSCI GCC INDEX - 30 DAYS CHART

GCC INDICES DAILY PERFORMANCE


UNITED STATES EQUITY MARKET INDICES

	Last Price	Daily %	YTD %	Δ10D Vol
Major Indices				
Dow Jones	25075.13	0.61%	1.44%	0.63%
S&P 500	2723.99	0.40%	1.88%	0.01%
Nasdaq	7077.915	0.18%	2.53%	-0.07%
Sectors Indices				
Discretionary	804.02	0.32%	2.38%	-0.30%
Staples	585.34	0.26%	-0.35%	0.01%
Energy	554.51	0.60%	3.96%	-0.39%
Financials	470.51	0.94%	1.42%	1.12%
Healthcare	978.47	0.10%	2.32%	-0.27%
Industrials	650.9	0.76%	2.05%	0.82%
IT	1139.41	0.48%	3.00%	0.09%
Materials	390.73	0.84%	3.11%	0.15%
Telecom	163.79	0.59%	-1.37%	0.06%
Utilities	260.73	-0.87%	-2.48%	0.14%
Real Estate	199.38	-1.72%	-2.20%	2.67%

S&P 500 INDEX - 30 DAYS CHART

S&P 500 SUPPORT & RESISTANCE


- Asian stocks are on the cusp of their best week in almost six months as investors around the world pile into equities at the start of 2018 amid robust economic data from the U.S. to Europe to China.
- The Dow Jones Industrial Average surged past 25,000 for the first time and the S&P 500 reached a new all-time high as economic data came in better than expected.
- European stocks gained the most in two week, boosted by cyclical industries such as carmakers, materials and banks, amid optimism over economic growth in the region.

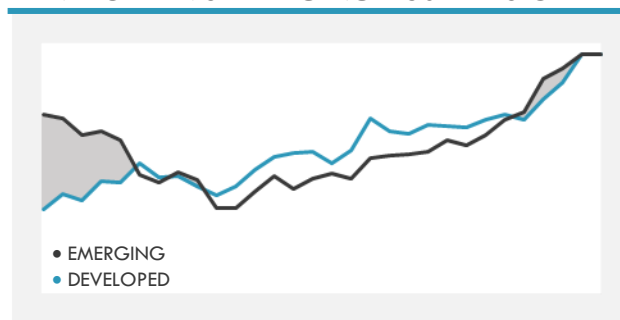
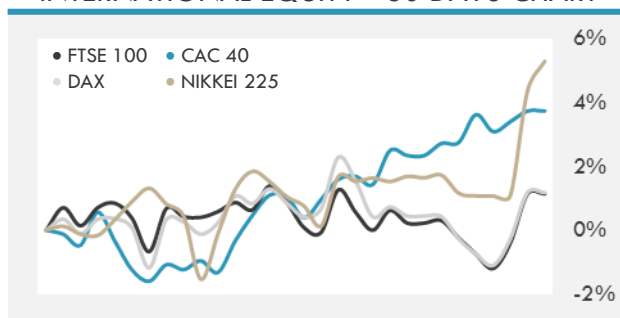
Source: Bloomberg

INTERNATIONAL MARKETS INDICES

	Last Price	Daily %	YTD %	Δ10D Vol
World	1279.12	0.79%	2.00%	0.96%
Developed	2142.75	0.80%	1.87%	1.17%
Emerging	1192.56	0.71%	2.94%	0.06%
Frontier	3067.21	0.63%	2.64%	0.07%
Europe	132.91	0.90%	1.14%	2.41%
Latin America	2958.99	1.39%	4.63%	-0.29%
Asia Pacific	178.07	1.23%	2.45%	1.76%

INTERNATIONAL EQUITY INDICES

	Last Price	Daily %	YTD %	Δ10D Vol
EuroStoxx 50	3568.88	1.68%	1.85%	4.59%
FTSE 100	7695.88	0.32%	0.11%	0.00%
CAC 40	5413.69	1.55%	1.90%	3.28%
DAX	13167.89	1.46%	1.94%	3.33%
Swiss SMI	9509.28	0.32%	1.36%	-0.32%
Nikkei 225	23714.53	0.89%	4.17%	14.21%
CSI 300	4139.71	0.26%	2.70%	-0.57%

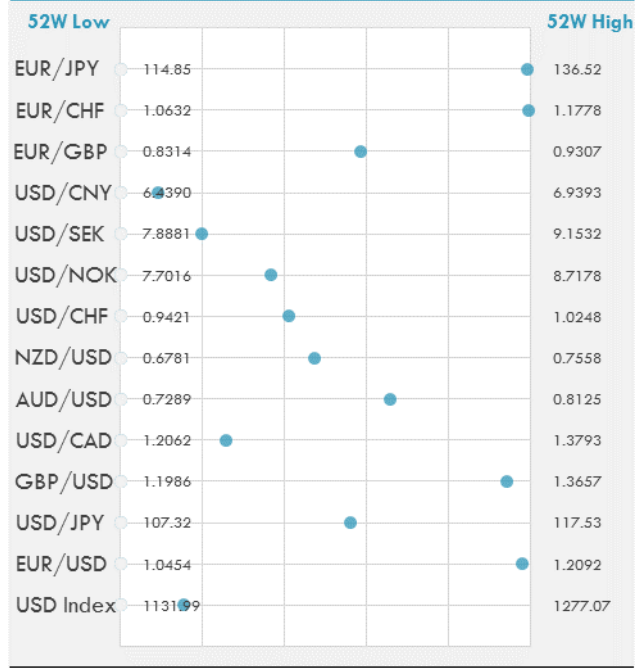
DEVELOPED VS EMERGING - 30 DAYS CHART

INTERNATIONAL EQUITY - 30 DAYS CHART




FOREIGN EXCHANGE MARKET

	Last Price	Daily %	Δ10D	Vol 25	ΔRR
Major USD Cross Rate					
USD Index	1154.36	0.11%	0.18%	-	
EUR/USD	1.2059	-0.07%	0.17%	0.293	
USD/JPY	113.04	0.26%	0.38%	-0.288	
GBP/USD	1.3556	0.04%	0.02%	0.010	
USD/CAD	1.2507	0.16%	0.37%	0.145	
AUD/USD	0.7837	-0.34%	1.32%	-0.015	
NZD/USD	0.7147	-0.10%	0.19%	-0.060	
USD/CHF	0.9761	0.20%	-0.01%	-0.475	
USD/NOK	8.0732	0.07%	0.37%	0.165	
USD/SEK	8.1391	0.03%	-0.14%	0.398	
USD/CNY	6.4847	-0.14%	-0.01%	0.275	
Major EUR Cross Rate					
EUR/GBP	0.8896	-0.11%	0.13%	0.278	
EUR/CHF	1.17705	0.12%	0.02%	-0.200	
EUR/JPY	136.33	0.19%	-0.04%	-0.153	

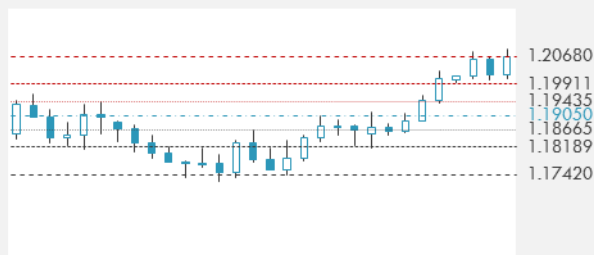
DISTANCE FROM 52 WEEKS LOW/HIGH



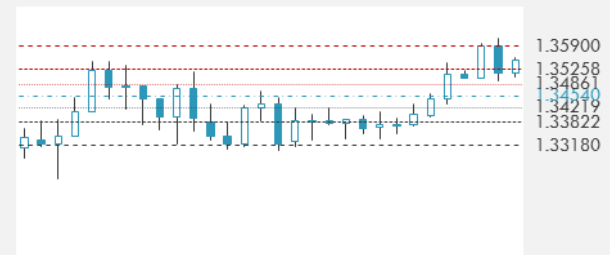
- The dollar traded near its lowest level in more than three months ahead of a report which may show U.S. hiring slowed last month. The Aussie swung to a loss after the nation reported an unexpected trade deficit.
- The yen held near this week's low as investors awaited U.S. jobs data for more clues on the pace of the Federal Reserve's rate increases this year.

Source: Bloomberg

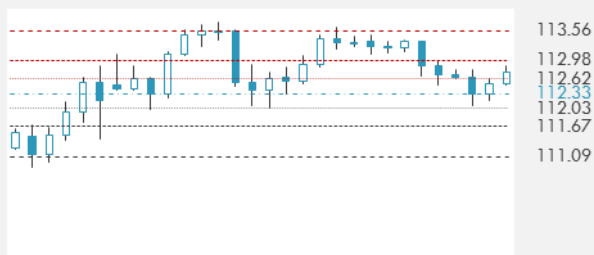
EUR/USD 30 DAYS SUPPORT & RESISTANCE



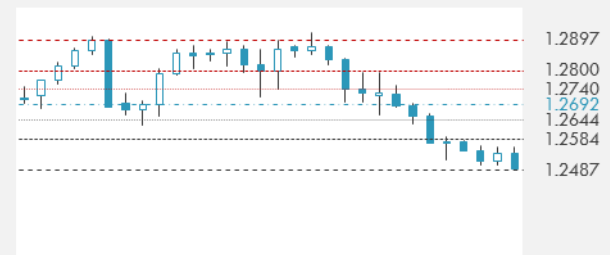
GBP/USD 30 DAYS SUPPORT & RESISTANCE



USD/JPY 30 DAYS SUPPORT & RESISTANCE

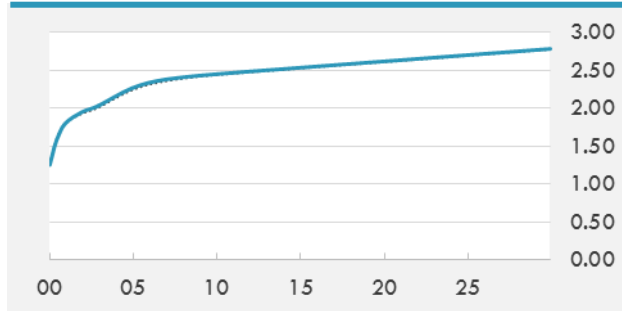
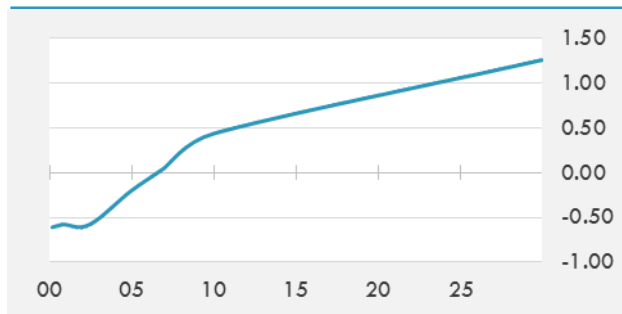


USD/CAD 30 DAYS SUPPORT & RESISTANCE



GLOBAL BOND INDICES

	Yield	ΔYield (in Bps)
Benchmark Indices		
US 10 Years Benchmark	2.4525	0.005
EU 10 Years Benchmark	0.434	-0.008
UK 10 Years Benchmark	1.234	0.021
Sovereign Bonds		
US Treasury Bond	2.242	0.015
Eurozone Sovereign Bond	0	0
Japan Sovereign Bond	-0.075	0.006
Corporate Bonds		
US Corporate TR	3.305	0.010
US High Yield Bond TR	5.570	-0.080
EUR Aggregate Corporate TR	0.748	-0.002
EUR High Yield TR	3.247	-0.034
USD Emerging Market IG & HY	4.487	-0.015

US TREASURIES YIELD CURVE

EUR GENERIC YIELD CURVE


- Front end of the curve out to belly sold off, while 10Y and 30Y sectors were little changed shortly after 3pm ET; early weakness on the back of bigger-than-forecast increase in ADP Employment was pared into the close as eurodollars were pressured lower throughout the session.
- Peripheral bonds surge as risk-on sentiment burgeons, with stocks climbing, and domestic buyers emerge. Move extends through French and Spanish supply, with the latter seeing decent demand, while bunds head into the close steady.

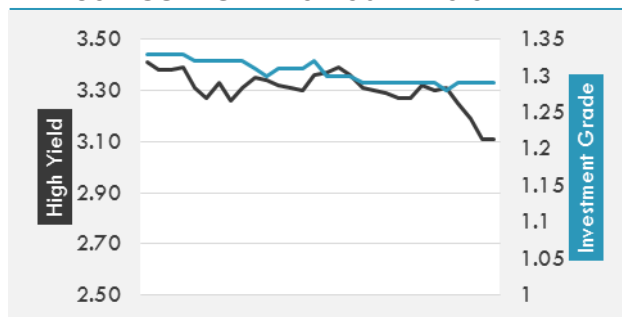
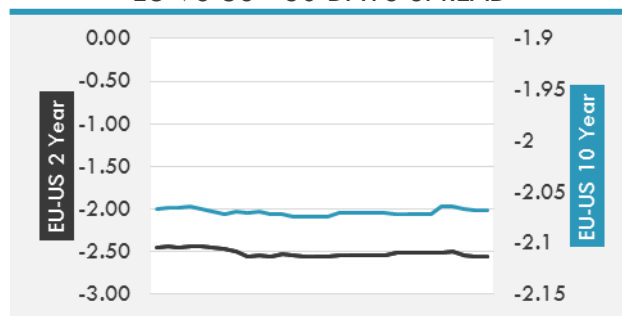
Source: Bloomberg

OVERNIGHT RATES - SWAPS

	Yield	ΔYield (in Bps)
3M USD LIBOR	1.69593	0.0000
3M EUR EURIBOR	-0.329	0.0000
3M GBP LIBOR	0.51844	0.0000
3Y USD SWAP	2.233	0.0313
5Y USD SWAP	2.3131	0.0279
10Y USD SWAP	2.446	0.0130
30Y USD SWAP	2.5854	0.0016

FIXED INCOME SPREADS

	Spread	ΔSpread (in Bps)
USD 3M vs 10Y Spread	1.04853	0.0004
USD 2Y vs 10Y Spread	0.49701	(0.0148)
USD IG Spread	1.29	-
USD HY Spread	3.11	(0.0800)
EU vs US 10Y Spread	-2.013	(0.0078)
EU vs US 2Y Spread	-2.5588	(0.0189)
EM vs Benchmark Spread	209.2	(2.400)

USD CORPORATES - 30 DAYS SPREAD

EU VS US - 30 DAYS SPREAD


GLOBAL COMMODITIES MARKET

	Last Price	Daily %
Commodity Index	88.57	-0.04%

Energy

WTI Crude Future	62.01	0.62%
Brent Crude Future	68.07	0.34%
NYMEX Gasoline	180.67	0.52%
NYMEX Heat Oil	207.7	-0.53%
ICE Gasoil	609	0.21%
NYMEX Natural Gas	2.88	-4.26%

Precious Metals

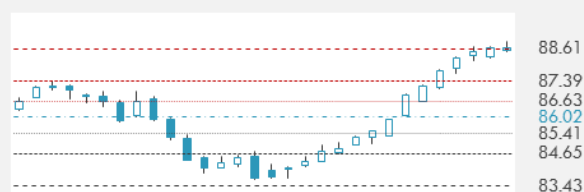
Gold Spot \$/Oz	1323.01	0.75%
Silver Spot \$/Oz	17.2285	0.54%
Platinum Spot \$/Oz	963.74	0.68%
Palladium Spot \$/Oz	1100.13	1.31%
Gold Future	1321.6	0.24%
Silver Future	17.269	0.01%
Platinum Future	970.2	0.82%
Palladium Future	1094.75	1.05%

Base Metals

LME Aluminum	2250	0.99%
LME Copper	7189	0.58%
LME Zinc	3362	1.05%
LME Nickel	12650	1.89%
LME Lead	2587	0.31%
LME Tin	19850	-0.25%

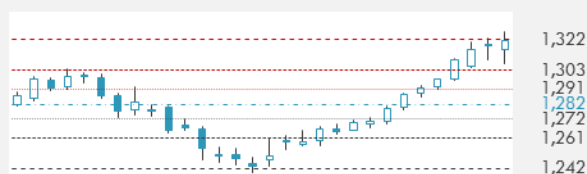
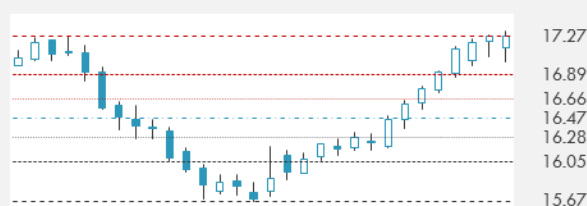
Agricultural

Corn CBT	351	-0.57%
Wheat CBT	434	-0.46%
Soybeans CBT	967.75	-0.10%
Bean Meal CBT	319.8	0.38%
Rough Rice CBT	11.71	0.56%
MDE Palm Oil	2585	-0.81%
Soybean CBT	33.87	-0.09%
Coffee ICE	129.55	0.74%
Sugar #11 ICE	15.25	-0.39%
Cotton #2 ICE	79.25	1.46%
Cocoa ICE	1905	-0.10%
Ethanol CME	1.322	-1.78%
Lumber CME	454.1	0.33%
Orange Juice ICE	138.85	-0.36%
Live Cattle CME	122.25	-0.57%
Feeder Cattle CME	145.55	-0.87%
Lean Hogs CME	71.375	0.46%

COMMODITY INDEX SUPPORT & RESISTANCE

WTI OIL 30 DAYS SUPPORT & RESISTANCE


- Oil held gains near the highest close in more than three years as U.S. crude stockpiles shrank for a seventh week, the longest run of declines since August, offsetting a rebound in production.

Source: Bloomberg

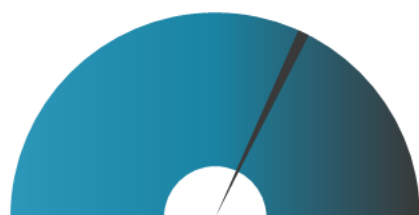
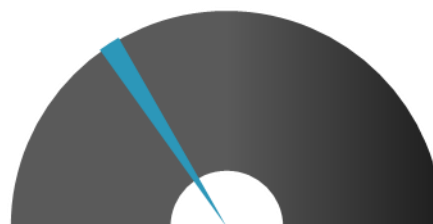
GOLD 30 DAYS SUPPORT & RESISTANCE

SILVER 30 DAYS SUPPORT & RESISTANCE


TOP 10 WINNERS

	Ticker	Last Price	Daily %
S&P 500 Stocks			
ADV MICRO DEVICE	AMD	12.12	4.94
ARCONIC INC	ARNC	29.32	4.79
STERICYCLE INC	SRCL	70.85	4.76
MICRON TECH	MU	46.88	4.22
ADVANCE AUTO PAR	AAP	111	3.69
APACHE CORP	APA	46.84	3.33
BAKER HUGHES A	BHGE	34.63	3.28
BORGWARNER INC	BWA	53.73	3.25
GENERAL MOTORS C	GM	44.14	3.08
HUMANA INC	HUM	258.36	2.82

TOP 10 LOSERS

	Ticker	Last Price	Daily %
S&P 500 Stocks			
L BRANDS INC	LB	51	-12.31
WALGREENS BOOTS	WBA	71.6	-5.18
FED REALTY INVS	FRT	128.54	-3.53
MACY'S INC	M	24.49	-3.32
REGENCY CENTERS	REG	66.79	-3.27
FOOT LOCKER INC	FL	46.31	-3.26
KROGER CO	KR	26.98	-3.12
VORNADO RLTY TST	VNO	74.8	-2.98
PUB SERV ENTERP	PEG	49.25	-2.94
SIMON PROPERTY	SPG	166.6	-2.93

S&P 500 DISTRIBUTION

WINNERS
LOSERS
S&P VOLATILITY INDEX

LOW VOLATILITY
HIGH VOLATILITY

- AT&T says it will launch mobile 5G service in a dozen U.S. markets by late 2018, and it expects to be the first there.
- Battling slowing sales and online competition, Macy's will announce another round of store closures this week, Business Insider reports.
- The judge overseeing the bankruptcy of Takata's U.S. unit has cleared the way for the company's creditors to vote on its Chapter 11 plan.
- Pakistan's central bank announced that it will be replacing the dollar with the yuan for bilateral trade and investment with China.
- Intel CEO Brian Krzanich sold off a large chunk of his stake in the company last year - after the chipmaker was already aware of security flaws in its computer processors, but before it was publicly disclosed on Wednesday.
- China targets economic growth of 6.5% in 2018 as it needs to balance efforts to reduce debt risks while keeping the economy stable.
- Tesla is down 2.61% premarket after pushing back a closely-watched production target of hitting a 5K Model 3s per week pace to the end of the second quarter.
- Japan's Prime Minister Shinzo Abe said that recovery in domestic demand is helping the economy to emerge from 20 years of deflation.
- The euro zone economy ended 2018 with the growth of 58.1, hitting seven-year high and putting pressure on the ECB to close its aggressive stimulus this year.
- Western Union agreed to pay \$60M for violations of anti-money laundering laws.

KEY ECONOMIC INDICATORS

Country	Event	Surv(M)	Actual	Prior	Time
Canada	Unemployment Rate	6.00%	--	5.90%	15:30
Canada	Net Change in Employment	2.0k	--	79.5k	15:30
Eurozone	CPI Estimate YoY	1.40%	--	1.50%	12:00
France	CPI YoY	1.20%	--	1.20%	9:45
France	Consumer Confidence	103	--	102	9:45
France	CPI EU Harmonized YoY	1.30%	--	1.20%	9:45
France	CPI MoM	0.30%	--	0.10%	9:45
Italy	CPI EU Harmonized YoY	1.10%	--	1.10%	12:00
Italy	CPI EU Harmonized MoM	0.30%	--	-0.20%	12:00
Italy	CPI NIC incl. tobacco MoM	0.20%	--	-0.20%	12:00
Japan	Monetary Base YoY	--	11.20%	13.20%	1:50
Japan	Nikkei Japan PMI Services	--	51.1	51.2	2:30
Japan	Nikkei Japan PMI Composite	--	52.2	52.2	2:30
United States	Change in Nonfarm Payrolls	190k	--	228k	15:30
United States	Durable Goods Orders	--	--	1.30%	17:00
United States	Unemployment Rate	4.10%	--	4.10%	15:30
United States	Factory Orders	1.10%	--	-0.10%	17:00
United States	Trade Balance	-\$49.9b	--	-\$48.7b	15:30
United States	ISM Non-Manf. Composite	57.6	--	57.4	17:00
United States	Durables Ex Transportation	--	--	-0.10%	17:00

Source: Bloomberg

Banque BEMO sal

Head Office - Private and Corporate Banking

 96 Pasteur Building, Pasteur Street, Medawar Area, P.O. Box: 16-6353, Beirut - Lebanon
 Tel: + 961 1 568 250 Fax: + 961 1 568 266

Wealth & Investment Management research@bemobank.com

 Beirut Central District Riad El Solh Square, Esseily Building Bloc A, 7th Floor Beirut - Lebanon
 Tel: + 961 1 992 600 Fax: + 961 1 983 368
www.bemobank.com

Disclaimer:

This report is published for information purposes only. The information herein has been compiled from, or based upon sources considered to be reliable (Bloomberg, SeekingAlpha, DailyStar...), but we do not guarantee or assume responsibility for its completeness and accuracy. This document should not be construed as a solicitation to take part in any investment, or as constituting any representation or warranty on our part. This report is not to be relied upon in substitution for the exercise of specialists.

We may not have taken any steps to ensure that the securities referred to in this report are suitable for any particular investor. The investments and services contained or referred to herein are not purported to be exhaustive, any person considering an investment should seek specialist advice on the suitability of an investment.

Nothing in this report constitutes investment, legal, accounting or tax advice, or a representation that any investment or strategy is suitable or appropriate to your individual circumstances, or otherwise constitutes a personal recommendation. Clients understand that it is their responsibility to seek legal and/or tax advice regarding the legal and tax consequences of their investment transactions. The consequences of any action taken on the basis of information contained herein are solely the responsibility of the recipient.

Investment instruments are subject to risk, including possible loss of principal amount invested. Past performance should not be taken as an indication or guarantee of future performance, and no representation or warranty, express or implied, is made regarding future performance. The value of securities and financial instruments is subject to exchange rate fluctuation that may have a positive or adverse effect on the price or income of such securities or financial instruments. Some investments mentioned in this report may have a high level of volatility. High volatility investments may experience sudden and large falls in their value causing losses when that investment is realized. Some investments may not be readily realizable and it may be difficult to sell or realize those investments, similarly it may prove difficult to obtain reliable information about the value, or risks, to which such an investment is exposed.

This report may provide the addresses of websites or references. We have not reviewed any such site and takes no responsibility for the content contained therein. Such address or reference is provided solely for convenience and information. Accessing such website through this report shall be at the recipients own risk.