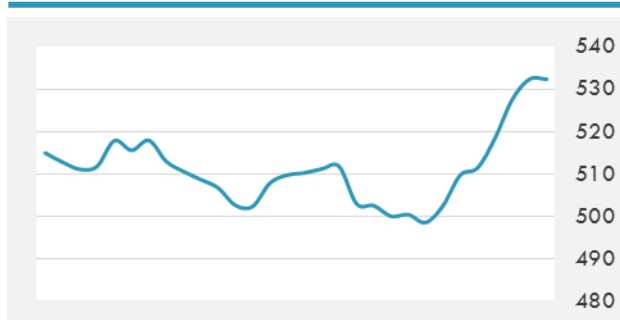
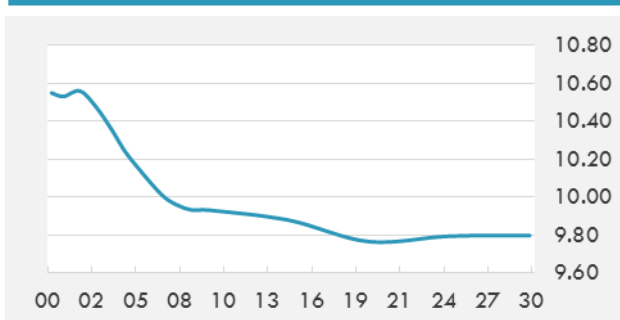


BEIRUT STOCK EXCHANGE

	Last	Daily %	YTD %	Dividend %
MSCI Lebanon	532.3	0.92%	-1.25%	
Development and Reconstruction				
Solidere A	6.61	3.28%	-5.57%	
Solidere B	6.62	2.48%	-7.93%	
Banking				
Audi Listed	5.4	0.00%	10.20%	10.14%
BLC Listed	0.93	0.00%	0.00%	
BOB Listed	18.8	0.00%	0.00%	
Byblos Listed	1.32	0.00%	-3.65%	10.55%
BEMO Listed	1.55	0.00%	-1.27%	
BLOM Listed	8.9	0.00%	-3.78%	12.62%
Trading				
RYMCO	3.28	0.00%	0.00%	
Industrial				
Holcim	15.5	0.00%	0.00%	
Ciments Blancs	2.75	0.00%	7.84%	

MSCI LEBANON INDEX - 30 DAYS CHART

LEBANESE USD SOVEREIGN CURVE


- Moody's cut Oman's credit rating to junk, saying its outlook for the rating was negative and citing fiscal challenges in an environment of moderate oil prices. Moody's downgraded the long-term issuer and senior unsecured bond ratings of Oman to Ba1 from Baa3. The rating agency added that Oman could face external vulnerability as wide fiscal deficits will contribute to wide current account deficits, perpetuating Oman's dependence on steady inflows of external financing.

Source: Daily Star, Gulf Business

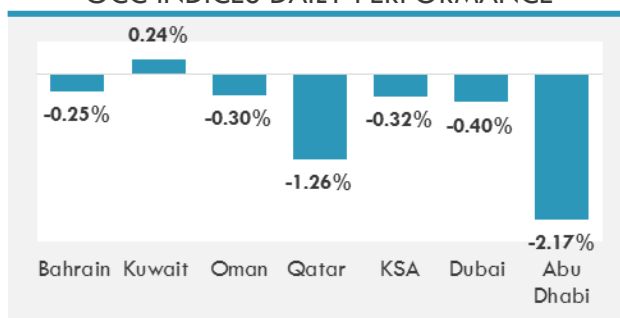
GCC EQUITY INDICES

	Last Price	Daily %	YTD %
Bahrain	1410.83	-0.25%	5.50%
Kuwait	5305.67	0.24%	4.43%
Oman	4153.42	-0.30%	-3.89%
Qatar	9884.21	-1.26%	-4.03%
KSA	8534.16	-0.32%	9.04%
Dubai	2626.13	-0.40%	3.60%
Abu Dhabi	4977.19	-2.17%	1.27%

LOCAL/GCC FOREIGN EXCHANGE

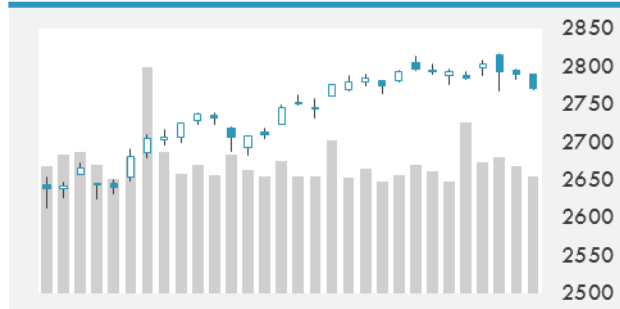
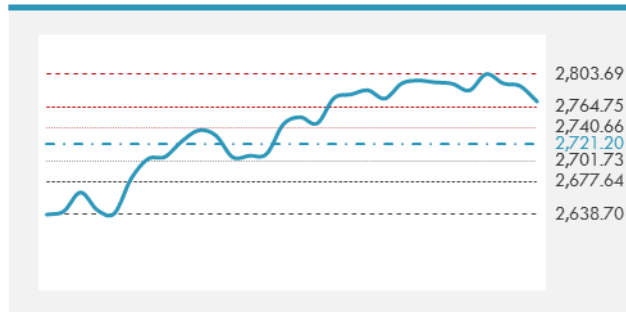
	Cross	Last Price
Lebanese Pound Spot	USD/LBP	1513.5
Bahraini Dinar Spot	USD/BHD	0.37702
Kuwaiti Dinar Spot	USD/KWD	0.30395
Omani Rial Spot	USD/OMR	0.385
Qatari Riyal Spot	USD/QAR	3.655
Saudi Riyal Spot	USD/SAR	3.7503
UAE Dirham Spot	USD/AED	3.673

MSCI GCC INDEX - 30 DAYS CHART

GCC INDICES DAILY PERFORMANCE


UNITED STATES EQUITY MARKET INDICES

	Last Price	Daily %	YTD %	Δ10D Vol
Major Indices				
Dow Jones	25673.46	-0.52%	10.06%	0.20%
S&P 500	2771.45	-0.65%	10.56%	0.73%
Nasdaq	7505.92	-0.93%	13.12%	1.59%
Sectors Indices				
Discretionary	870.42	-0.56%	11.38%	0.65%
Staples	557.19	-0.10%	6.77%	-0.54%
Energy	481.88	-1.28%	13.63%	-0.85%
Financials	434.36	-0.71%	9.71%	0.59%
Healthcare	1043.04	-1.47%	4.18%	1.41%
Industrials	627.76	-0.94%	15.79%	1.24%
IT	1233.76	-0.55%	13.37%	0.83%
Materials	343.96	0.20%	8.63%	0.10%
Com. Services	156.35	-0.01%	12.66%	-1.34%
Utilities	288.29	0.03%	7.32%	-1.04%
Real Estate	215.35	-0.26%	11.95%	0.10%

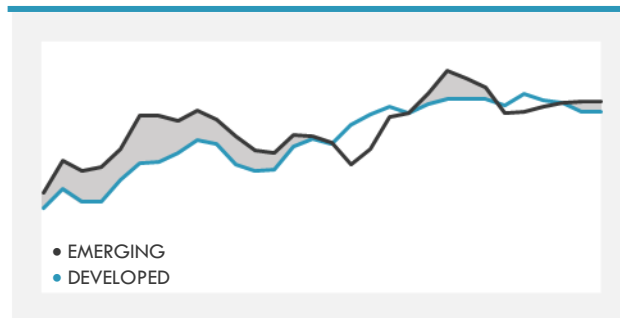
S&P 500 INDEX - 30 DAYS CHART

S&P 500 SUPPORT & RESISTANCE


- U.S. equities fell for a third straight session as healthcare and energy shares slumped. Investors remained cautious, awaiting fresh developments on trade talks between the U.S. and China. Markets were also seemingly pressured lower by data revealing the U.S. trade deficit surged to a 10-year in 2018.
- European shares ended slightly lower as weak results from the troubled auto sector weighed in. Losses were mitigated by a rise in bank shares after Bloomberg reported the ECB is holding discussions on the design on new ultra-cheap bank loans ahead of its meeting later today.

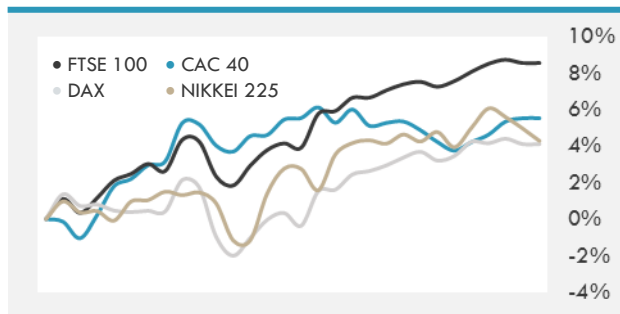
Source: Bloomberg, Financial Times, Reuters

INTERNATIONAL MARKETS INDICES

	Last Price	Daily %	YTD %	Δ10D Vol
World	1227.24	-0.37%	10.21%	0.26%
Developed	2078.69	-0.42%	10.34%	0.30%
Emerging	1055.68	0.05%	9.31%	-0.02%
Frontier	2682.14	0.36%	7.84%	0.23%
Europe	126.78	-0.04%	11.01%	-0.66%
Latin America	2755.65	-0.55%	7.39%	-0.02%
Asia Pacific	159.54	0.02%	8.75%	-0.04%

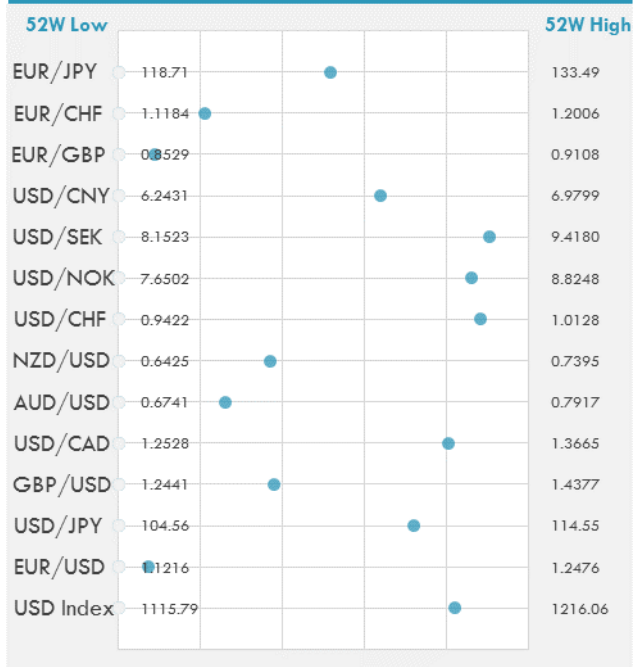
DEVELOPED VS EMERGING - 30 DAYS CHART

INTERNATIONAL EQUITY INDICES

	Last Price	Daily %	YTD %	Δ10D Vol
EuroStoxx 50	3324.67	-0.08%	10.77%	0.37%
FTSE 100	7196	0.17%	6.95%	-1.35%
CAC 40	5288.81	-0.16%	11.80%	0.41%
DAX	11587.63	-0.28%	9.74%	0.63%
Swiss SMI	9403.16	0.04%	11.55%	-0.03%
Nikkei 225	21456.01	-0.65%	7.20%	0.75%
CSI 300	3812.95	-0.91%	26.65%	-0.96%

INTERNATIONAL EQUITY - 30 DAYS CHART


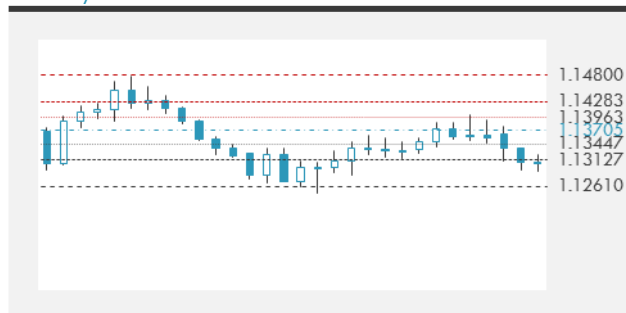
FOREIGN EXCHANGE MARKET

	Last Price	Daily %	Δ10D	Vol 25	ΔRR
Major USD Cross Rate					
USD Index	1197.86	0.04%	-0.31%	-	
EUR/USD	1.1306	-0.01%	0.00%	-0.320	
USD/JPY	111.74	-0.03%	0.02%	-0.610	
GBP/USD	1.3176	0.05%	0.00%	-0.040	
USD/CAD	1.3442	0.00%	-2.00%	0.235	
AUD/USD	0.7046	0.20%	-0.64%	-0.510	
NZD/USD	0.6784	0.22%	-1.04%	-0.395	
USD/CHF	1.0045	-0.04%	-0.02%	-0.218	
USD/NOK	8.6617	-0.04%	-0.08%	0.503	
USD/SEK	9.2950	-0.07%	-0.04%	0.270	
USD/CNY	6.7139	0.04%	-0.07%	-0.450	
Major EUR Cross Rate					
EUR/GBP	0.85805	-0.04%	0.02%	-0.135	
EUR/CHF	1.1356	-0.06%	-0.01%	-0.298	
EUR/JPY	126.33	-0.04%	0.01%	-0.730	

DISTANCE FROM 52 WEEKS LOW/HIGH


- The U.S. dollar is higher for a sixth day as U.S.-China trade talk optimism fades. The Canadian dollar fell after the Bank of Canada dropped its assertion that interest rates need to rise amid signs of slowing economic growth. The Japanese yen was little changed against the U.S. dollar.
- The Australian dollar fell as Reserve Bank of Australia chief Philip Lowe said it's hard to envision a scenario where the central bank needs to raise rates this year.
- The British pound was stuck near one-week lows in the wake of profit taking and renewed worries about next week's parliamentary votes on Brexit.

Source: Bloomberg, Financial Times, Reuters

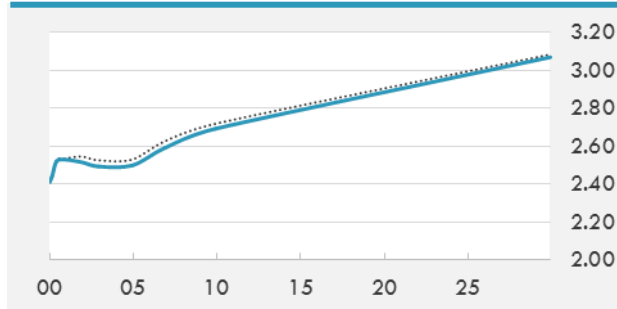
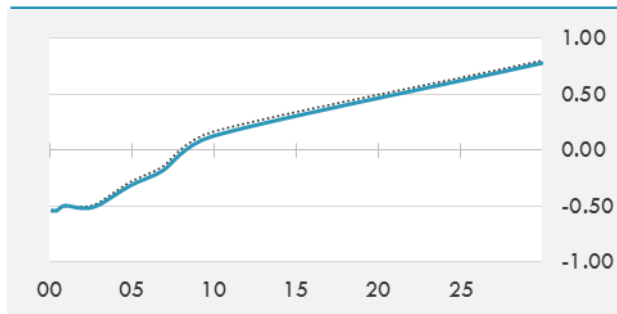
EUR/USD 30 DAYS SUPPORT & RESISTANCE

GBP/USD 30 DAYS SUPPORT & RESISTANCE

USD/JPY 30 DAYS SUPPORT & RESISTANCE

USD/CAD 30 DAYS SUPPORT & RESISTANCE


GLOBAL BOND INDICES

	Yield	ΔYield (in Bps)
Benchmark Indices		
US 10 Years Benchmark	2.693	-0.023
EU 10 Years Benchmark	0.128	-0.040
UK 10 Years Benchmark	1.227	-0.060
Sovereign Bonds		
US Treasury Bond	2.628	-0.028
Eurozone Sovereign Bond	0.434	-0.05
Japan Sovereign Bond	-0.134	-0.009
Corporate Bonds		
US Corporate TR	3.900	-0.020
US High Yield Bond TR	6.621	0.031
EUR Aggregate Corporate TR	1.027	-0.013
EUR High Yield TR	4.520	0.027
USD Emerging Market IG & HY	5.495	-0.017

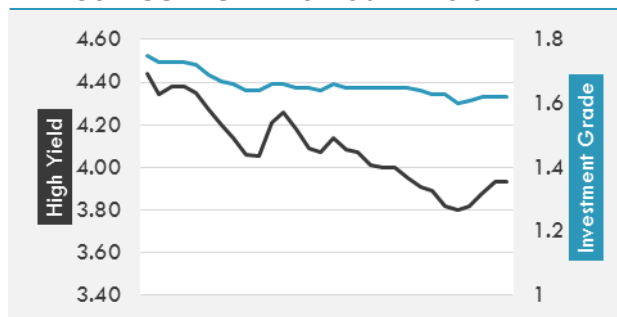
US TREASURIES YIELD CURVE

EUR GENERIC YIELD CURVE


- U.S. Treasury yields fell as stocks weakened and remarks from New York Federal Reserve President Williams about the persistence of low inflation further curtailed expectations of interest rate hikes in the near future. Focus remains on the release of initial jobless claim figures scheduled for later today.
- Eurozone government bond yields fell after a report by Bloomberg that the European Central Bank is holding discussions on the design of new ultra-cheap bank loans. Doubts about progress in Britain's talks to leave the E.U. pushed British Gilt yields lower.

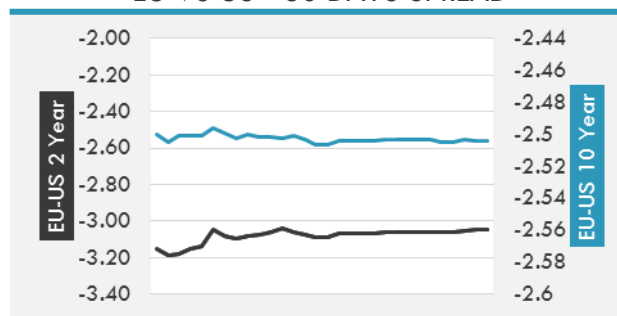
Source: Bloomberg, Financial Times, Economic times, Reuters

OVERNIGHT RATES - SWAPS

	Yield	ΔYield (in Bps)
3M USD LIBOR	2.607	0.000
3M EUR EURIBOR	-0.308	0.000
3M GBP LIBOR	0.848	0.000
3Y USD SWAP	2.577	-0.026
5Y USD SWAP	2.565	-0.024
10Y USD SWAP	2.712	-0.020
30Y USD SWAP	2.873	-0.014

USD CORPORATES - 30 DAYS SPREAD

FIXED INCOME SPREADS

	Spread	ΔSpread (in Bps)
USD 3M vs 10Y Spread	0.237	-0.034
USD 2Y vs 10Y Spread	0.175	0.007
USD IG Spread	1.620	0.000
USD HY Spread	3.930	0.050
EU vs US 10Y Spread	-2.563	-0.006
EU vs US 2Y Spread	-3.047	0.005
EM vs Benchmark Spread	251.500	0.000

EU VS US - 30 DAYS SPREAD


GLOBAL COMMODITIES MARKET

	Last Price	Daily %
Commodity Index	80.74	-0.56%

Energy

WTI Crude Future	56.22	-0.60%
Brent Crude Future	65.99	0.20%
NYMEX Gasoline	178.9	1.22%
NYMEX Heat Oil	201.62	-0.01%
ICE Gasoil	615	-0.08%
NYMEX Natural Gas	2.841	-1.49%

Precious Metals

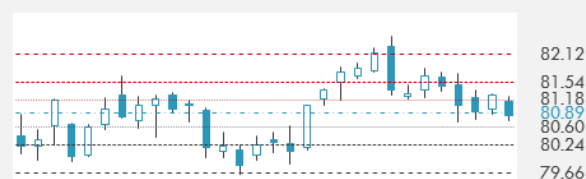
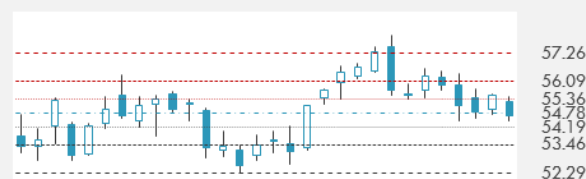
Gold Spot \$/Oz	1286.36	-0.13%
Silver Spot \$/Oz	15.0775	-0.40%
Platinum Spot \$/Oz	827.4	-1.22%
Palladium Spot \$/Oz	1536.81	1.16%
Gold Future	1287.6	0.23%
Silver Future	15.085	-0.13%
Platinum Future	828.1	-1.18%
Palladium Future	1486.4	1.40%

Base Metals

LME Aluminum	1866	-0.43%
LME Copper	6468	-0.15%
LME Zinc	2788	0.29%
LME Nickel	13585	-0.48%
LME Lead	2099	-0.10%
LME Tin	21400	-0.77%

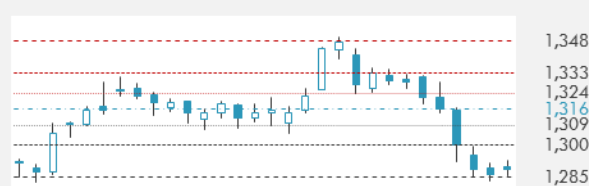
Agricultural

Corn CBT	372.5	-0.86%
Wheat CBT	450	-2.76%
Soybeans CBT	902	-1.29%
Bean Meal CBT	306.1	-1.26%
Rough Rice CBT	10.865	1.40%
MDE Palm Oil	2157	-0.19%
Soybean CBT	29.78	-0.80%
Coffee ICE	98.7	-0.95%
Sugar #11 ICE	12.16	-2.25%
Cotton #2 ICE	74.21	-0.54%
Cocoa ICE	2245	4.08%
Ethanol CME	1.344	-0.44%
Lumber CME	370.5	2.89%
Orange Juice ICE	115.9	0.04%
Live Cattle CME	128.9	0.06%
Feeder Cattle CME	143.65	-0.52%
Lean Hogs CME	57.075	-1.42%

COMMODITY INDEX SUPPORT & RESISTANCE

WTI OIL 30 DAYS SUPPORT & RESISTANCE


- Oil prices fell as U.S. crude oil stockpiles rose much more than expected last week. Crude inventories rose 7.1m barrels in the week to March 1, far exceeding analysts' expectations for an increase of 1.2m barrels according to the Energy Information Administration.
- Gold prices fell as the dollar held firm near its recent highs.

Source: Bloomberg, Reuters

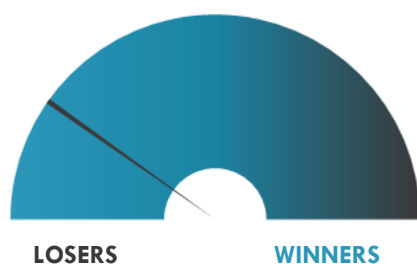
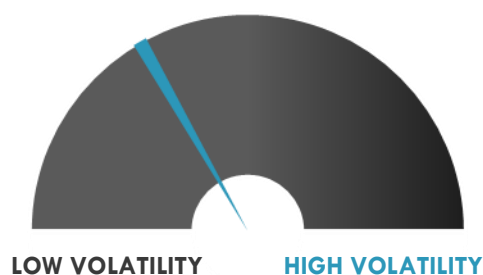
GOLD 30 DAYS SUPPORT & RESISTANCE

SILVER 30 DAYS SUPPORT & RESISTANCE


TOP 10 WINNERS

	Ticker	Last Price	Daily %
S&P 500 Stocks			
LYONDELLBASELL-A	LYB	89.26	6.11
DOLLAR TREE INC	DLTR	100.35	5.11
AON PLC	AON	164	4.29
ALTRIA GROUP INC	MO	54.67	3.39
DISH NETWORK-A	DISH	31.94	2.57
LKQ CORP	LKQ	28.47	2.48
CAPRI HOLDINGS L	CPRI	46	1.84
ACTIVISION BLIZZ	ATVI	42.56	1.62
QUALCOMM INC	QCOM	54.8	2.78
NETFLIX INC	NFLX	359.61	1.50

TOP 10 LOSERS

	Ticker	Last Price	Daily %
S&P 500 Stocks			
GENERAL ELECTRIC	GE	9.11	-7.89
WILLIS TOWERS WA	WLTW	170.88	-6.13
WABTEC CORP	WAB	69.01	-5.53
NEKTAR THERAPEUT	NKTR	36.39	-5.23
WESTERN DIGITAL	WDC	48.12	-5.16
MICRON TECH	MU	37.93	-5.15
BROWN-FORMAN -B	BF/B	48.85	-5.13
HCA HEALTHCARE I	HCA	128.73	-4.92
PERRIGO CO PLC	PRGO	47.3	-4.85
HALLIBURTON CO	HAL	28.84	-4.79

S&P 500 DISTRIBUTION

S&P VOLATILITY INDEX


- Chinese telecoms equipment maker Huawei Technologies is suing the U.S. government, saying a law limiting its U.S. business was unconstitutional, ratcheting up its fight back against a government bent on closing it out of global markets.
- German fashion house Hugo Boss said it expected its operating profit to rise faster than sales in 2019, predicting strong momentum in its online business and Asia. The company said it expected a high single-digit percentage increase in operating profit for 2019.
- Exxon Mobil plans to boost capital spending for several years, CEO Darren Woods said on Wednesday, and the largest U.S. oil company's shares fell after he laid out a strategy to "lean in" while the rest of the industry cuts back.
- Amazon.com, Berkshire Hathaway and JPMorgan Chase announced that their joint healthcare company would be called Haven and will focus on better primary care access, simpler insurance benefits and more affordable prescription drugs for their employees.
- Dollar Tree announced plans to close hundreds more Family Dollar stores as it wrote off \$2.7 billion, or nearly a third of the value of the struggling discount chain it bought for \$9 billion four years ago. Shares of the company also rose as it reported better-than-expected fourth-quarter same-store sales.
- Daimler and BMW are teaming up to develop autonomous driving technology to cut costs and set an industry standard that can help to shape future regulation for self-driving cars. The news was announced by BMW board member Klaus Froehlich.

KEY ECONOMIC INDICATORS

Country	Event	Surv (M)	Actual	Prior	Time
Australia	Retail Sales MoM	0.30%	0.10%	-0.40%	2:30
Australia	Trade Balance	A\$2750m	A\$4549m	A\$3681m	2:30
Brazil	Markit Brazil PMI Services	--	--	52	15:00
Brazil	Markit Brazil PMI Composite	--	--	52.3	15:00
Canada	Building Permits MoM	-5.00%	--	6.00%	15:30
China	Foreign Reserves	\$3087.95b	--	\$3087.92b	
Eurozone	ECB Main Refinancing Rate	0.00%	--	0.00%	14:45
Eurozone	GDP SA QoQ	0.20%	--	0.20%	12:00
Eurozone	GDP SA YoY	1.20%	--	1.20%	12:00
Eurozone	ECB Deposit Facility Rate	-0.40%	--	-0.40%	14:45
Eurozone	ECB Marginal Lending Facility	0.25%	--	0.25%	14:45
Eurozone	Household Cons QoQ	0.20%	--	0.10%	12:00
Italy	Retail Sales MoM	--	--	-0.70%	11:00
Italy	Retail Sales YoY	--	--	-0.60%	11:00
Japan	Leading Index CI	96.1	95.9	97.5	7:00
Japan	Japan Buying Foreign Bonds	--	¥453.1b	¥1014.9b	1:50
Russia	Gold and Forex Reserve	--	--	480.5b	15:00
United Kingdom	Halifax House Prices MoM	0.10%	--	-2.90%	10:30
United Kingdom	Halifax House Price 3Mths/Year	1.00%	--	0.80%	10:30
United States	Initial Jobless Claims	225k	--	225k	15:30
United States	Continuing Claims	1772k	--	1805k	15:30
United States	Bloomberg Consumer Comfort	--	--	61	16:45

Source: Bloomberg

Banque BEMO sal

Head Office - Private and Corporate Banking

 96 Pasteur Building, Pasteur Street, Medawar Area, P.O. Box: 16-6353, Beirut - Lebanon
 Tel: + 961 1 568 250 Fax: + 961 1 568 266

Wealth & Investment Management research@bemobank.com

 Beirut Central District Riad El Solh Square, Esseily Building Bloc A, 7th Floor Beirut - Lebanon
 Tel: + 961 1 992 600 Fax: + 961 1 983 368
www.bemobank.com

Disclaimer:

This report is published for information purposes only. The information herein has been compiled from, or based upon sources considered to be reliable (Bloomberg, SeekingAlpha, DailyStar...), but we do not guarantee or assume responsibility for its completeness and accuracy. This document should not be construed as a solicitation to take part in any investment, or as constituting any representation or warranty on our part. This report is not to be relied upon in substitution for the exercise of specialists.

We may not have taken any steps to ensure that the securities referred to in this report are suitable for any particular investor. The investments and services contained or referred to herein are not purported to be exhaustive, any person considering an investment should seek specialist advice on the suitability of an investment.

Nothing in this report constitutes investment, legal, accounting or tax advice, or a representation that any investment or strategy is suitable or appropriate to your individual circumstances, or otherwise constitutes a personal recommendation. Clients understand that it is their responsibility to seek legal and/or tax advice regarding the legal and tax consequences of their investment transactions. The consequences of any action taken on the basis of information contained herein are solely the responsibility of the recipient.

Investment instruments are subject to risk, including possible loss of principal amount invested. Past performance should not be taken as an indication or guarantee of future performance, and no representation or warranty, express or implied, is made regarding future performance. The value of securities and financial instruments is subject to exchange rate fluctuation that may have a positive or adverse effect on the price or income of such securities or financial instruments. Some investments mentioned in this report may have a high level of volatility. High volatility investments may experience sudden and large falls in their value causing losses when that investment is realized. Some investments may not be readily realizable and it may be difficult to sell or realize those investments, similarly it may prove difficult to obtain reliable information about the value, or risks, to which such an investment is exposed.

This report may provide the addresses of websites or references. We have not reviewed any such site and takes no responsibility for the content contained therein. Such address or reference is provided solely for convenience and information. Accessing such website through this report shall be at the recipients own risk.