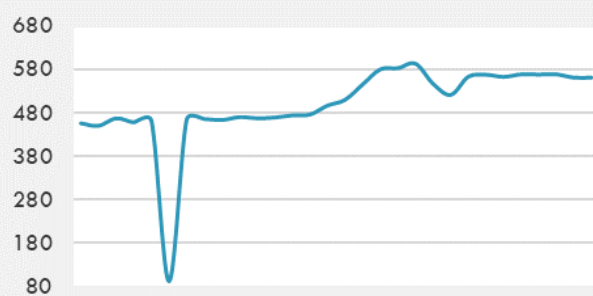
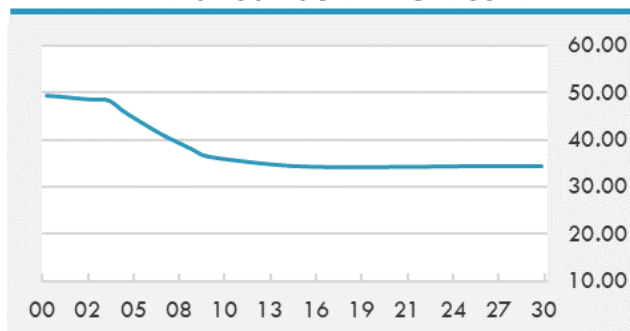


BEIRUT STOCK EXCHANGE

	Last	Daily %	YTD %	Dividend %
MSCI Lebanon	561.37	-1.32%	28.24%	
Development and Reconstruction				
Solidere A	23.71	-1.21%	28.16%	
Solidere B	23.5	-1.67%	28.49%	
Banking				
Audi Listed	2.76	9.96%	126.23%	
BLC Listed	0.93	0.00%	0.00%	
BOB Listed	17.8	0.00%	0.00%	
Byblos Listed	0.69	-4.17%	30.19%	
BEMO Listed	1.2	0.00%	0.00%	
BLOM Listed	3.54	0.00%	71.01%	
Trading				
RYMCO	3.19	0.00%	0.00%	
Industrial				
Holcim	15	0.00%	3.45%	
Ciments Blancs	5.2	0.00%	26.83%	

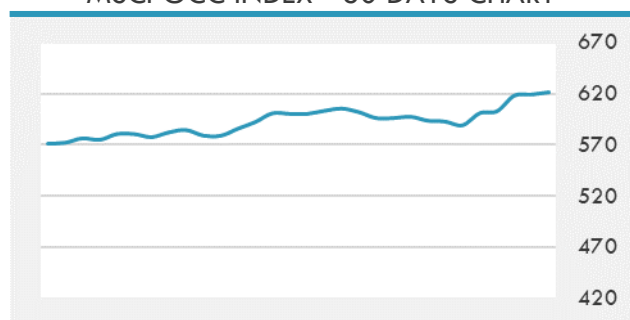
MSCI LEBANON INDEX - 30 DAYS CHART

LEBANESE USD SOVEREIGN CURVE


- The Tadawul All Share Index of the Saudi Stock Exchange ended Monday on a marginal increase of 0.02%, or 2.07 points, at 9,964.84 points.
- Abu Dhabi Stock Exchange has listed EUR 1.1 billion worth of bonds, issued by Mamoura Diversified Global Holding's Global Medium Term Notes, according to the Emirates News Agency.
- The ordinary general meeting of Dubai Islamic Bank plans to issue the US dollar-denominated Additional Tier 1 Sukuk within this week, two sources told Reuters.

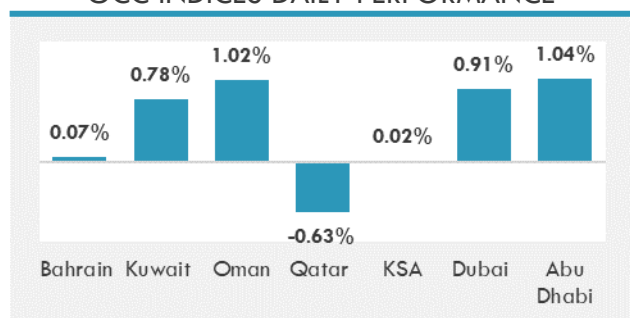
Source: Daily Star, Gulf Business, Mubasher, Bloomberg, Businessnews LB

GCC EQUITY INDICES

	Last Price	Daily %	YTD %
Bahrain	1454.91	0.07%	-2.06%
Kuwait	5812.44	0.78%	4.96%
Oman	3699.78	1.02%	1.12%
Qatar	10374.4	-0.63%	-0.59%
KSA	9964.84	0.02%	14.68%
Dubai	2573.32	0.91%	3.26%
Abu Dhabi	6015.33	1.04%	19.23%

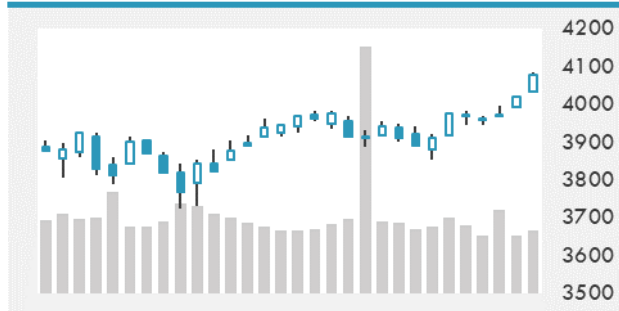
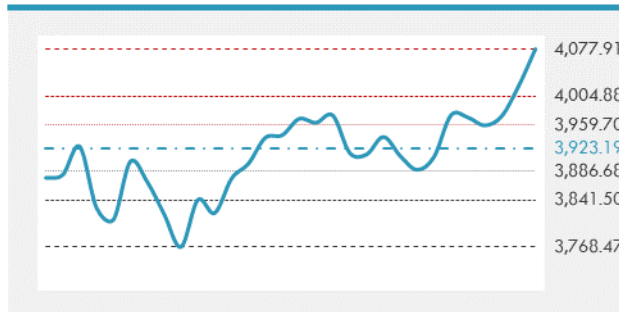
MSCI GCC INDEX - 30 DAYS CHART

LOCAL/GCC FOREIGN EXCHANGE

	Cross	Last Price
Lebanese Pound Spot	USD/LBP	1515.5
Bahraini Dinar Spot	USD/BHD	0.37703
Kuwaiti Dinar Spot	USD/KWD	0.302
Omani Rial Spot	USD/OMR	0.38501
Qatari Riyal Spot	USD/QAR	3.6415
Saudi Riyal Spot	USD/SAR	3.7503
UAE Dirham Spot	USD/AED	3.673

GCC INDICES DAILY PERFORMANCE


UNITED STATES EQUITY MARKET INDICES

	Last Price	Daily %	YTD %	Δ10D Vol
Major Indices				
Dow Jones	33527.19	0.00%	9.54%	1.15%
S&P 500	4077.91	0.00%	8.57%	1.28%
Nasdaq	13705.59	0.00%	6.34%	0.79%
Sectors Indices				
Discretionary	1385.00	0.00%	6.33%	3.72%
Staples	706.73	0.00%	1.50%	0.22%
Energy	370.57	0.00%	29.51%	2.97%
Financials	577.22	0.00%	17.70%	-1.77%
Healthcare	1366.35	0.00%	3.20%	-0.34%
Industrials	845.87	0.00%	12.85%	0.55%
IT	2428.22	0.00%	5.98%	0.18%
Materials	505.4	0.00%	10.90%	0.56%
Com. Services	249.75	0.00%	12.54%	3.28%
Utilities	328.76	0.00%	3.04%	0.09%
Real Estate	252.42	0.00%	10.76%	-0.37%

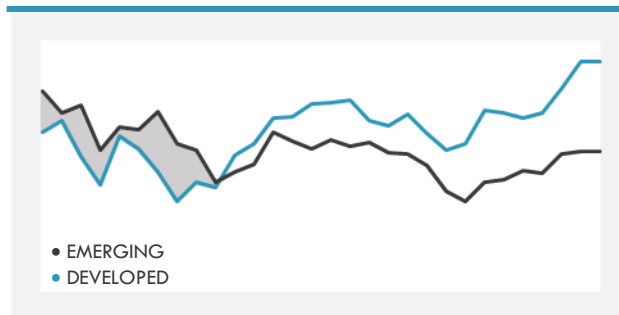
S&P 500 INDEX - 30 DAYS CHART

S&P 500 SUPPORT & RESISTANCE


- U.S. equities indexes futures edged higher as investors weighed an unexpectedly strong U.S. jobs report and bonds steadied from earlier losses.
- Asian stocks fell, poised to snap a three-day winning streak, as Japan led declines after the yen gained against the dollar overnight.
- Shares of electronics makers, banks and automakers were the biggest drags on Japan's benchmark Topix.

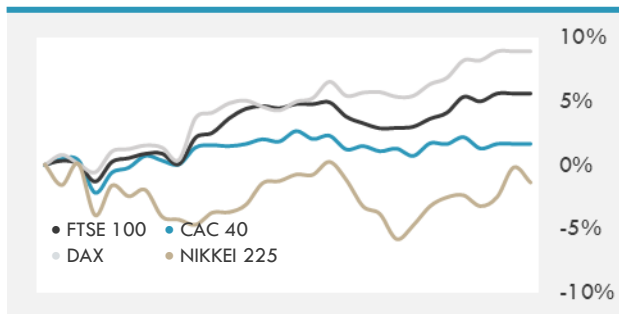
Source: Bloomberg, Financial Times, Reuters

INTERNATIONAL MARKETS INDICES

	Last Price	Daily %	YTD %	Δ10D Vol
World	1679.25	0.00%	6.38%	-0.73%
Developed	2872.97	0.00%	6.80%	-0.52%
Emerging	1338.79	0.00%	3.68%	-0.90%
Frontier	2459.02	0.00%	-5.13%	-0.29%
Europe	143.27	0.00%	8.46%	-0.35%
Latin America	2332.25	0.00%	-4.87%	2.34%
Asia Pacific	207.11	0.00%	3.60%	-0.30%

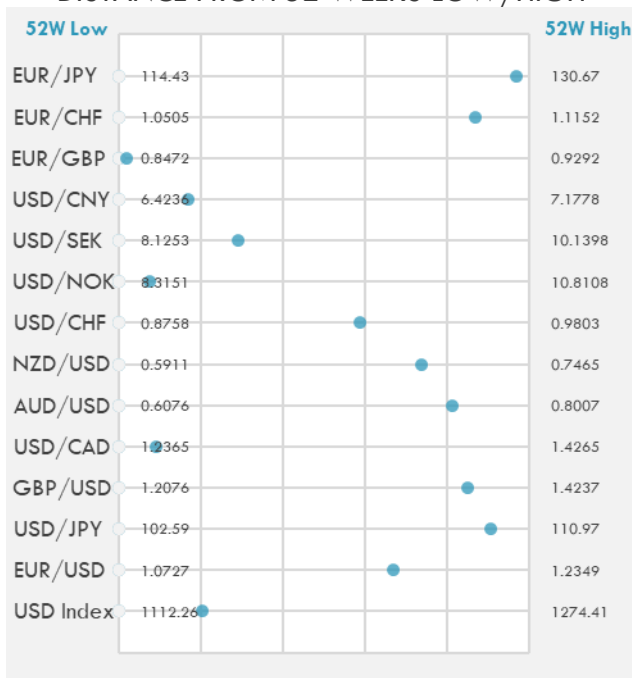
DEVELOPED VS EMERGING - 30 DAYS CHART

INTERNATIONAL EQUITY INDICES

	Last Price	Daily %	YTD %	Δ10D Vol
EuroStoxx 50	3945.96	0.00%	11.07%	0.00%
FTSE 100	6737.3	0.00%	4.28%	0.00%
CAC 40	6102.96	0.00%	9.94%	0.00%
DAX	15107.17	0.00%	10.12%	0.00%
Swiss SMI	11118.03	0.00%	3.87%	0.00%
Nikkei 225	29734.79	-1.18%	8.35%	-2.40%
CSI 300	5132.85	-0.56%	-1.51%	0.00%

INTERNATIONAL EQUITY - 30 DAYS CHART


FOREIGN EXCHANGE MARKET

	Last Price	Daily %	Δ10D	Vol 25	ΔRR
Major USD Cross Rate					
USD Index	1145.52	0.02%	-0.86%	-	
EUR/USD	1.181	-0.03%	-0.82%	-0.003	
USD/JPY	110.2	0.02%	0.80%	-0.073	
GBP/USD	1.3915	0.11%	-2.77%	-0.363	
USD/CAD	1.2536	0.09%	-0.20%	0.453	
AUD/USD	0.7647	-0.05%	-4.59%	-0.928	
NZD/USD	0.7056	-0.04%	-8.67%	-0.900	
USD/CHF	0.9371	0.04%	-2.92%	0.133	
USD/NOK	8.5004	-0.04%	-5.34%	1.265	
USD/SEK	8.7097	0.09%	-1.77%	0.538	
USD/CNY	6.5515	-0.24%	0.63%	0.500	
Major EUR Cross Rate					
EUR/GBP	0.84874	-0.10%	-1.25%	0.325	
EUR/CHF	1.10672	0.05%	-1.55%	0.303	
EUR/JPY	130.15	0.01%	-3.02%	-0.393	

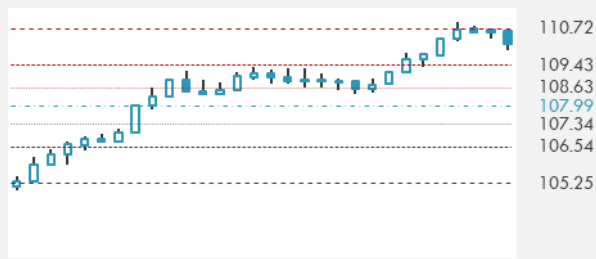
DISTANCE FROM 52 WEEKS LOW/HIGH


- The dollar climbed against most of its Group-of-10 peers as a record expansion in the U.S. services industry added to evidence of an upturn in the world's biggest economy. The yen retreated.
- Australian dollar holds near a one-week high ahead of the central bank's policy decision and after strength in U.S. data and stocks pushed risk currencies higher.

Source: Bloomberg, Financial Times, Reuters

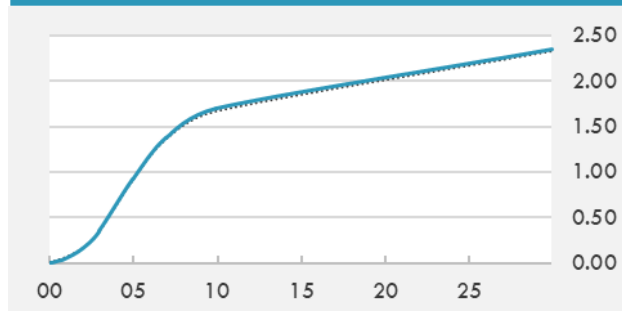
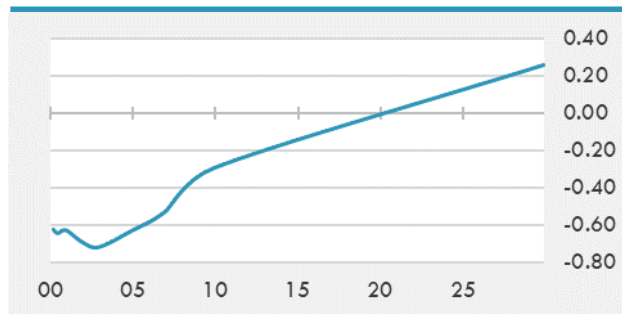
EUR/USD 30 DAYS SUPPORT & RESISTANCE

GBP/USD 30 DAYS SUPPORT & RESISTANCE

USD/JPY 30 DAYS SUPPORT & RESISTANCE

USD/CAD 30 DAYS SUPPORT & RESISTANCE


GLOBAL BOND INDICES

	Yield	ΔYield (in Bps)
Benchmark Indices		
US 10 Years Benchmark	1.6699	-0.070
EU 10 Years Benchmark	-0.328	-0.036
UK 10 Years Benchmark	0.795	0.000
Sovereign Bonds		
US Treasury Bond	0.594	0
Eurozone Sovereign Bond	-0.428	0
Japan Sovereign Bond	-0.104	0
Corporate Bonds		
US Corporate TR	2.235	-0.041
US High Yield Bond TR	4.157	-0.076
EUR Aggregate Corporate TR	0.321	-0.035
EUR High Yield TR	3.182	-0.040
USD Emerging Market IG & HY	3.981	-0.030

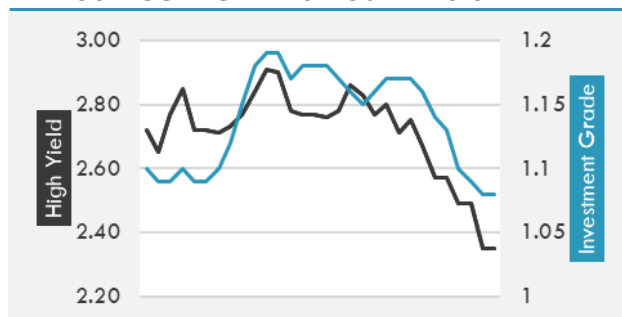
US TREASURIES YIELD CURVE

EUR GENERIC YIELD CURVE


- Treasuries gained in cash and futures trading as investors shrugged off a record expansion in the U.S. services sector.
- The Reserve Bank of Australia held off on deciding whether to shift the maturity for its YCC target bond. Japan's 30-year sale drew decent demand.
- The Germany 2-year to 10-year yield curve will remain steady at 39 basis points by the end of the second quarter, based on Bloomberg surveys of market forecasts.

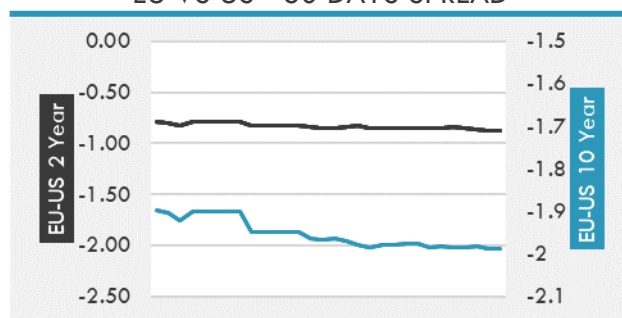
Source: Bloomberg, Financial Times, Economic times, Reuters

OVERNIGHT RATES - SWAPS

	Yield	ΔYield (in Bps)
3M USD LIBOR	0.200	0.006
3M EUR EURIBOR	-0.538	0.000
3M GBP LIBOR	0.090	0.002
3Y USD SWAP	0.504	-0.010
5Y USD SWAP	1.018	-0.039
10Y USD SWAP	1.713	-0.068
30Y USD SWAP	2.125	-0.074

USD CORPORATES - 30 DAYS SPREAD

FIXED INCOME SPREADS

	Spread	ΔSpread (in Bps)
USD 3M vs 10Y Spread	1.652	-0.068
USD 2Y vs 10Y Spread	1.506	-0.071
USD IG Spread	1.090	-0.010
USD HY Spread	2.490	0.000
EU vs US 10Y Spread	-2.007	0.013
EU vs US 2Y Spread	-0.867	-0.019
EM vs Benchmark Spread	263.600	-5.500

EU VS US - 30 DAYS SPREAD


GLOBAL COMMODITIES MARKET

	Last Price	Daily %
Commodity Index	83.43	0.51%

Energy

WTI Crude Future	59.18	0.90%
Brent Crude Future	62.51	0.58%
NYMEX Gasoline	197.46	0.69%
NYMEX Heat Oil	178.16	0.52%
ICE Gasoil	497.5	-0.20%
NYMEX Natural Gas	2.528	0.68%

Precious Metals

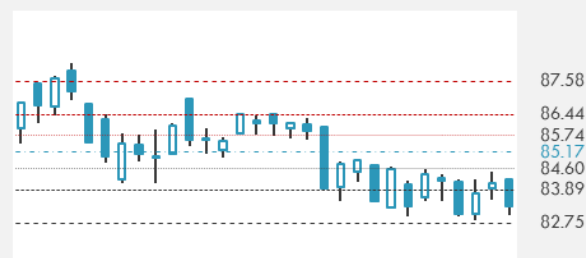
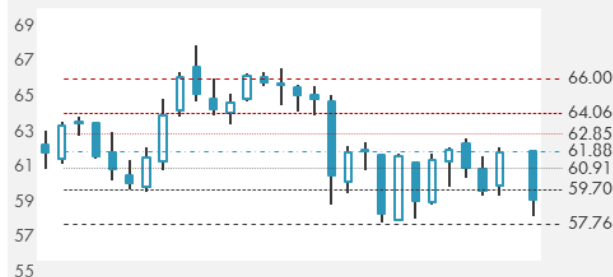
Gold Spot \$/Oz	1737.63	0.54%
Silver Spot \$/Oz	24.9998	0.49%
Platinum Spot \$/Oz	1214.53	0.16%
Palladium Spot \$/Oz	2656.58	-0.21%
Gold Future	1738.4	0.56%
Silver Future	25.06	1.13%
Platinum Future	1218.4	0.71%
Palladium Future	2655	0.01%

Base Metals

LME Aluminum	2226	0.00%
LME Copper	8790	0.00%
LME Zinc	2775	0.00%
LME Nickel	16214	0.00%
LME Lead	1964	0.00%
LME Tin	25123	0.00%

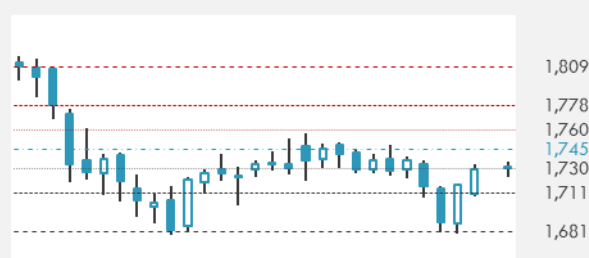
Agricultural

Corn CBT	553.25	0.00%
Wheat CBT	619.5	0.24%
Soybeans CBT	1419.25	0.46%
Bean Meal CBT	407.4	0.27%
Rough Rice CBT	13.16	0.00%
MDE Palm Oil	3790	1.36%
Soybean CBT	53.38	1.08%
Coffee ICE	122.1	0.00%
Sugar #11 ICE	14.84	0.00%
Cotton #2 ICE	79.25	1.76%
Cocoa ICE	2364	0.00%
Ethanol CME	1.85	0.00%
Lumber CME	1021	0.00%
Orange Juice ICE	108.75	0.00%
Live Cattle CME	124.425	0.00%
Feeder Cattle CME	151.775	0.00%
Lean Hogs CME	105.6	0.00%

COMMODITY INDEX SUPPORT & RESISTANCE

WTI OIL 30 DAYS SUPPORT & RESISTANCE


- With OPEC+ appearing to manage its exit for now, supply concerns will likely shift to the potential return of Iran to the JCPOA agreement, Goldman analysts said in an emailed note.
- Gold advanced as investors weighed a drop in real yields against solid U.S. data that signaled a recovery from the pandemic

Source: Bloomberg, Reuters

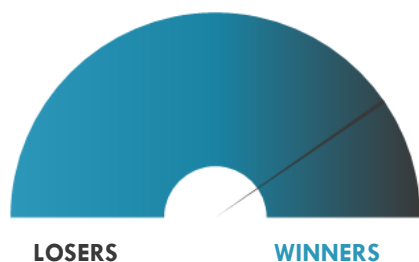
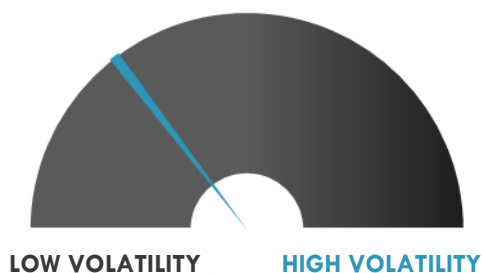
GOLD 30 DAYS SUPPORT & RESISTANCE

SILVER 30 DAYS SUPPORT & RESISTANCE


TOP 10 WINNERS

	Ticker	Last Price	Daily %
S&P 500 Stocks			
Norwegian Cruise Line	NCLH	29.71	+7.18%
General Motors Co	GM	61.04	+5.61%
MGM Resorts	MGM	41.7	+5.04%
Freeport-McMoRan Inc	FCX	35.36	+4.74%
Carnival Corp	CCL	28.11	+4.65%
VF Corp	VFC	83.11	+4.55%
Under Armour Inc	UAA	22.97	+4.55%
Tesla Inc	TSLA	691.05	+4.43%
Ford Motor Co	F	12.7	+4.35%
Alphabet Inc	GOOGL	2218.96	+4.19%

TOP 10 LOSERS

	Ticker	Last Price	Daily %
S&P 500 Stocks			
Enphase Energy Inc	ENPH	149.42	-8.16%
Occidental Petroleum	OXY	25.31	-7.56%
Pioneer Natural Res.	PXD	152.18	-7.55%
Diamondback Energy	FANG	75.4	-7.17%
APA Corp	APA	17.54	-6.95%
Etsy Inc	ETSY	197.2	-5.28%
Marathon Oil Corp	MRO	11.19	-5.09%
Hess Corp	HES	70.76	-4.99%
EOG Resources Inc	EOG	71.79	-4.71%
Devon Energy Corp	DVN	22.46	-4.43%

S&P 500 DISTRIBUTION

S&P VOLATILITY INDEX


- Cara Therapeutics is up 20.9% after hours following news it's joining the S&P SmallCap 600 index. It will there to replace MTS Systems, which is set to be acquired by Amphenol.
- NetsREIT stock slips 3.1% in after-hours trading after the company starts a public offering of 8M shares and will use ~\$13M of the proceeds to repay borrowings under the operating partnership's revolving credit facility.
- Duck Creek shares are up 3.6% after hours following fiscal Q2 results that included a surprise \$0.01 non-GAAP profit compared to the \$0.03 loss expected by analysts.
- Alphabet and Google will stop using Oracle for its internal financial software in the next few weeks, CNBC reports. It will instead switch to SAP, according to the report. SAP shares have jumped 4.2% on the NYSE in response.
- Southwest Airlines is recalling 209 pilots from extended leave, according to a Bloomberg report.
- Sabre says air bookings, passengers boarded, and hotel central reservation system transactions in March increased sequentially on the prior two months.
- Nikola is lower on the day after founder Trevor Milton sells more shares in his former company in what Barron's describes as a strange move.
- Impel NeuroPharma has filed for a \$75M IPO and intends to list on Nasdaq under the ticker "IMPL." The number of shares to be offered and price range have yet to be determined.
- Roblox is 4.8% higher after a day of bullish initiations from sell-side analysts, following the company's mid-March direct-listing trading debut.

KEY ECONOMIC INDICATORS

Country	Event	Surv (M)	Actual	Prior	Time
Australia	RBA Cash Rate Target	0.10%	0.10%	0.10%	7:30
Australia	RBA 3-Yr Yield Target	0.10%	0.10%	0.10%	7:30
Australia	ANZ Job Advertisements MoM	--	7.40%	7.20%	4:30
Belgium	Unemployment Rate	--	--	5.60%	12:00
China	Caixin China PMI Services	52.1	54.3	51.5	4:45
China	Caixin China PMI Composite	--	53.1	51.7	4:45
Eurozone	Unemployment Rate	8.10%	--	8.10%	12:00
Eurozone	Sentix Investor Confidence	6.7	--	5	11:30
Ireland	Live Register Level	--	--	188500	13:00
Ireland	Live Register Monthly Change	--	--	-2800	13:00
Italy	Unemployment Rate	8.90%	--	9.00%	11:00
Japan	Labor Cash Earnings YoY	-0.60%	-0.20%	-0.80%	2:30
Japan	Household Spending YoY	-5.00%	-6.60%	-6.10%	2:30
Japan	Real Cash Earnings YoY	-0.10%	0.20%	-0.10%	2:30
Latvia	Industrial Output WDA YoY	--	--	2.80%	13:00
Latvia	Industrial Output MoM	--	--	-1.50%	13:00
Slovakia	Current Account Balance	--	--	-2.55E+08	
Spain	Unemployment Change	--	--	44400	10:00
United Kingdom	New Car Registrations YoY	--	--	-35.50%	11:00
United States	JOLTS Job Openings	6900	--	6917	17:00

Source: Bloomberg

Banque BEMO sal

Head Office - Private and Corporate Banking

Elias Sarkis Ave., Bemo Bldg , Ashrafieh - Lebanon
Tel: +961 1 200 505 Fax: +961 1 217 860

Research & Development research@bemobank.com

Elias Sarkis Ave., Bemo Bldg , Ashrafieh - Lebanon
Tel: +961 1 200 505 Fax: +961 1 217 860

Disclaimer:

This report is published for information purposes only. The information herein has been compiled from, or based upon sources considered to be reliable (Bloomberg, SeekingAlpha, DailyStar...), but we do not guarantee or assume responsibility for its completeness and accuracy. This document should not be construed as a solicitation to take part in any investment, or as constituting any representation or warranty on our part. This report is not to be relied upon in substitution for the exercise of specialists.

We may not have taken any steps to ensure that the securities referred to in this report are suitable for any particular investor. The investments and services contained or referred to herein are not purported to be exhaustive, any person considering an investment should seek specialist advice on the suitability of an investment.

Nothing in this report constitutes investment, legal, accounting or tax advice, or a representation that any investment or strategy is suitable or appropriate to your individual circumstances, or otherwise constitutes a personal recommendation. Clients understand that it is their responsibility to seek legal and/or tax advice regarding the legal and tax consequences of their investment transactions. The consequences of any action taken on the basis of information contained herein are solely the responsibility of the recipient.

Investment instruments are subject to risk, including possible loss of principal amount invested. Past performance should not be taken as an indication or guarantee of future performance, and no representation or warranty, express or implied, is made regarding future performance. The value of securities and financial instruments is subject to exchange rate fluctuation that may have a positive or adverse effect on the price or income of such securities or financial instruments. Some investments mentioned in this report may have a high level of volatility. High volatility investments may experience sudden and large falls in their value causing losses when that investment is realized. Some investments may not be readily realizable and it may be difficult to sell or realize those investments, similarly it may prove difficult to obtain reliable information about the value, or risks, to which such an investment is exposed.

This report may provide the addresses of websites or references. We have not reviewed any such site and takes no responsibility for the content contained therein. Such address or reference is provided solely for convenience and information. Accessing such website through this report shall be at the recipients own risk.