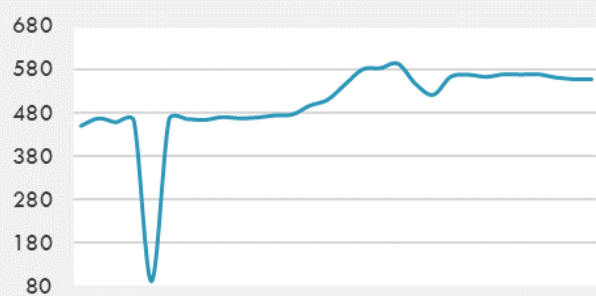
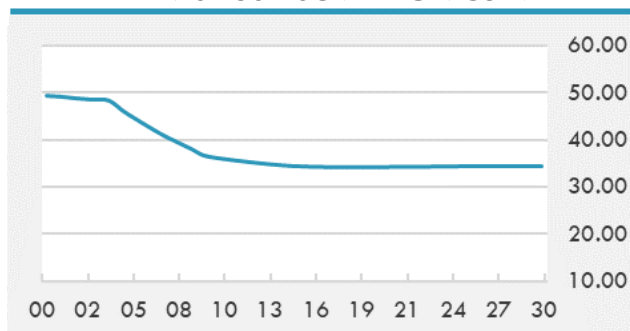


BEIRUT STOCK EXCHANGE

	Last	Daily %	YTD %	Dividend %
MSCI Lebanon	557.63	-0.67%	27.39%	
Development and Reconstruction				
Solidere A	23.5	-0.89%	27.03%	
Solidere B	23.5	0.00%	28.49%	
Banking				
Audi Listed	2.76	0.00%	126.23%	
BLC Listed	0.93	0.00%	0.00%	
BOB Listed	17.8	0.00%	0.00%	
Byblos Listed	0.7	1.45%	32.08%	
BEMO Listed	1.2	0.00%	0.00%	
BLOM Listed	3.6	1.69%	73.91%	
Trading				
RYMCO	3.19	0.00%	0.00%	
Industrial				
Holcim	15	0.00%	3.45%	
Ciments Blancs	5.2	0.00%	26.83%	

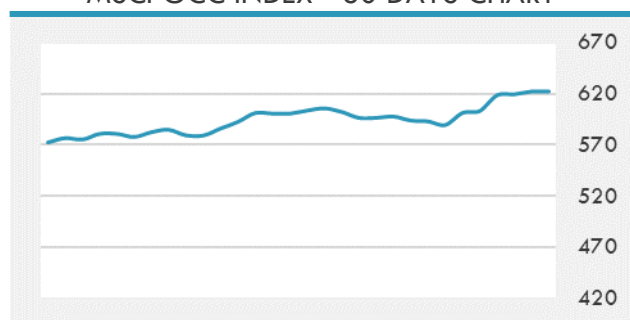
MSCI LEBANON INDEX - 30 DAYS CHART

LEBANESE USD SOVEREIGN CURVE


- The Central Bank agreed to furnish Alvarez & Marsal with all the remaining documents and information for forensic auditing from Friday till the end of the month of April, the Finance Ministry said in a statement Tuesday.
- The Tadawul All Share Index of the Saudi Stock Exchange closed Tuesday 0.24% or 24.14 points higher at 9,988.98 points.
- US-based asset manager BlackRock and Canadian Brookfield Asset Management are reportedly no longer in the race to buy equity in the Saudi Aramco pipeline business.

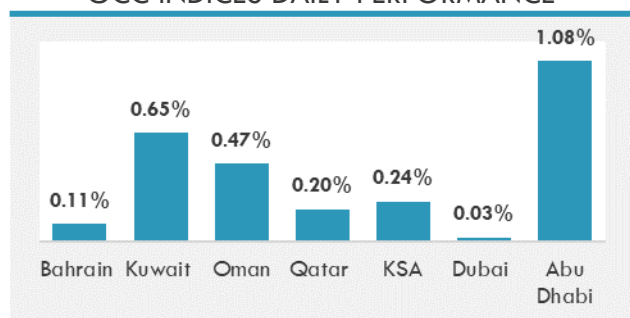
Source: Daily Star, Gulf Business, Mubasher, Bloomberg, Businessnews LB

GCC EQUITY INDICES

	Last Price	Daily %	YTD %
Bahrain	1456.5	0.11%	-2.23%
Kuwait	5850.34	0.65%	5.49%
Oman	3717.2	0.47%	1.60%
Qatar	10394.92	0.20%	-0.39%
KSA	9988.98	0.24%	14.95%
Dubai	2574.08	0.03%	3.29%
Abu Dhabi	6080.52	1.08%	20.52%

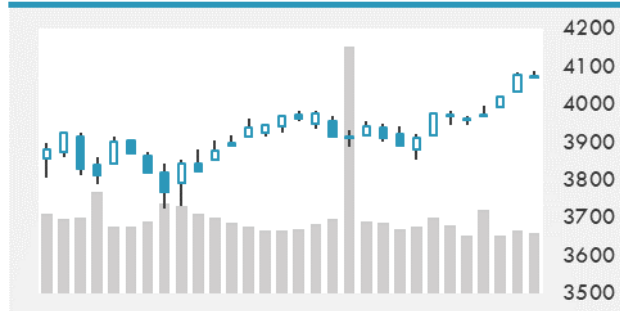
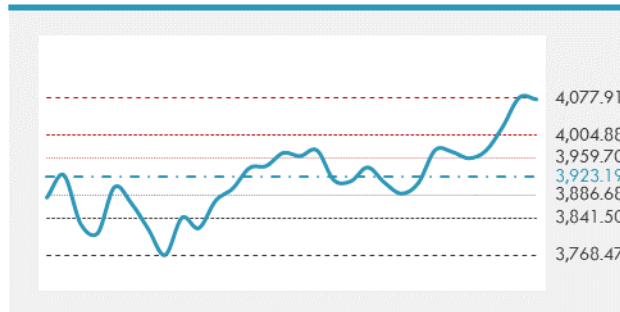
MSCI GCC INDEX - 30 DAYS CHART

LOCAL/GCC FOREIGN EXCHANGE

	Cross	Last Price
Lebanese Pound Spot	USD/LBP	1515.5
Bahraini Dinar Spot	USD/BHD	0.37703
Kuwaiti Dinar Spot	USD/KWD	0.302
Omani Rial Spot	USD/OMR	0.385
Qatari Riyal Spot	USD/QAR	3.6417
Saudi Riyal Spot	USD/SAR	3.7504
UAE Dirham Spot	USD/AED	3.673

GCC INDICES DAILY PERFORMANCE


UNITED STATES EQUITY MARKET INDICES

	Last Price	Daily %	YTD %	Δ10D Vol
Major Indices				
Dow Jones	33430.24	0.00%	9.23%	-1.79%
S&P 500	4073.94	0.00%	8.46%	-1.36%
Nasdaq	13698.38	0.00%	6.29%	-1.51%
Sectors Indices				
Discretionary	1389.56	0.00%	6.68%	-1.27%
Staples	709.08	0.00%	1.83%	0.00%
Energy	369.6	0.00%	29.17%	-1.17%
Financials	576.59	0.00%	17.57%	-2.94%
Healthcare	1361.46	0.00%	2.83%	-1.42%
Industrials	843.63	0.00%	12.55%	-5.09%
IT	2418.98	0.00%	5.57%	-0.36%
Materials	506.58	0.00%	11.16%	-5.92%
Com. Services	249.92	0.00%	12.62%	-0.29%
Utilities	330.49	0.00%	3.58%	-1.55%
Real Estate	252.87	0.00%	10.96%	0.06%

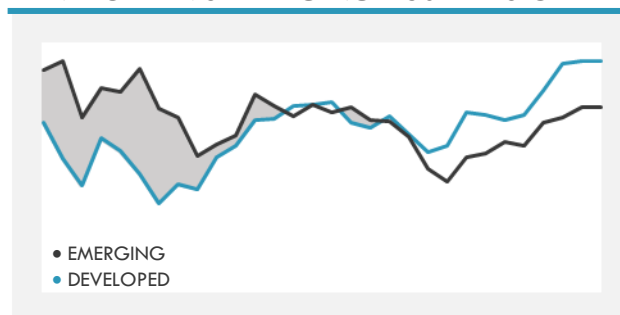
S&P 500 INDEX - 30 DAYS CHART

S&P 500 SUPPORT & RESISTANCE


- U.S. index futures retreated Tuesday, signaling a pause in the rally that pushed the S&P 500 Index to a fresh peak on Monday.
- European stocks rose to a record high, more than a year after the pandemic spurred a market collapse, as investors looked past the region's slow pace of vaccinations and focused on prospects for a global economic recovery.
- Asian stocks declined as benchmarks in China led the drop and Hong Kong shares fell as they resumed trade following a four-day weekend.

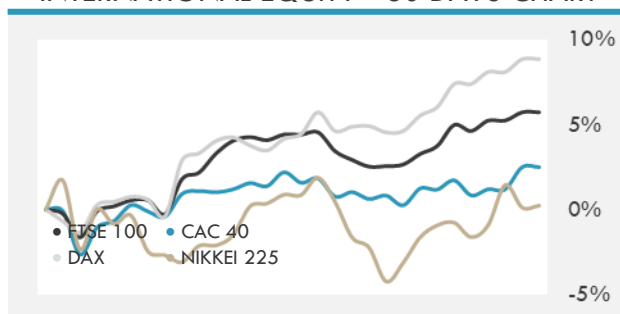
Source: Bloomberg, Financial Times, Reuters

INTERNATIONAL MARKETS INDICES

	Last Price	Daily %	YTD %	Δ10D Vol
World	1682.23	0.00%	6.57%	-2.47%
Developed	2876.23	0.00%	6.92%	-1.87%
Emerging	1346.91	0.00%	4.31%	-5.30%
Frontier	2485.45	0.00%	-4.11%	1.55%
Europe	144.13	0.00%	9.11%	0.14%
Latin America	2341.72	0.00%	-4.49%	-3.56%
Asia Pacific	207.3	0.00%	3.69%	-5.96%

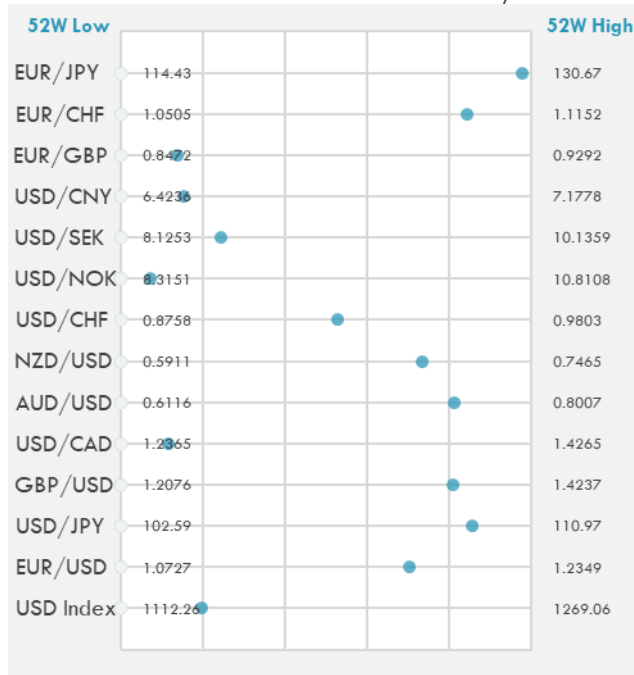
DEVELOPED VS EMERGING - 30 DAYS CHART

INTERNATIONAL EQUITY INDICES

	Last Price	Daily %	YTD %	Δ10D Vol
EuroStoxx 50	3970.42	0.00%	11.76%	-0.24%
FTSE 100	6823.55	0.00%	5.62%	2.10%
CAC 40	6131.34	0.00%	10.45%	-0.94%
DAX	15212.68	0.00%	10.89%	0.15%
Swiss SMI	11182.95	0.00%	4.48%	-0.36%
Nikkei 225	29730.06	0.11%	8.33%	-2.93%
CSI 300	5077.82	-1.22%	-2.56%	-0.84%

INTERNATIONAL EQUITY - 30 DAYS CHART


FOREIGN EXCHANGE MARKET

	Last Price	Daily %	Δ10D	Vol 25	ΔRR
Major USD Cross Rate					
USD Index	1143.01	0.02%	-0.41%	-	
EUR/USD	1.187	-0.05%	-0.65%	0.120	
USD/JPY	109.77	0.02%	-0.33%	-0.263	
GBP/USD	1.3826	0.01%	-0.17%	-0.400	
USD/CAD	1.2587	0.17%	-0.14%	0.463	
AUD/USD	0.7654	-0.13%	0.11%	-0.880	
NZD/USD	0.7055	-0.06%	-0.24%	-0.903	
USD/CHF	0.9311	0.02%	-0.79%	0.015	
USD/NOK	8.4923	0.08%	-1.14%	1.165	
USD/SEK	8.6145	0.00%	-0.52%	0.533	
USD/CNY	6.5406	0.02%	-0.44%	0.650	
Major EUR Cross Rate					
EUR/GBP	0.85855	-0.07%	-1.28%	0.360	
EUR/CHF	1.1052	-0.03%	-0.03%	0.298	
EUR/JPY	130.3	-0.02%	0.02%	-0.508	

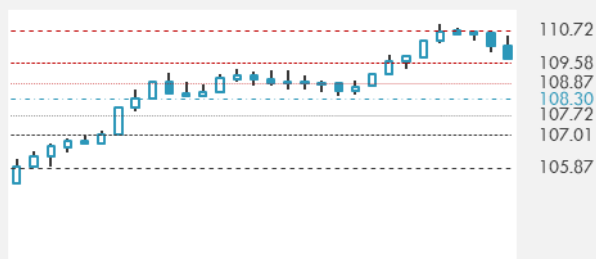
DISTANCE FROM 52 WEEKS LOW/HIGH


- A gauge of the dollar halted a four-day loss before the release of the minutes of the Federal Reserve's March meeting.
- The euro touched a two-week high, while the franc and yen were among top performers in the Group-of-10 category as traders continued to unwind short positions held on the currencies in the first quarter.
- Aussie holds above support and near Tuesday's session high after IMF boosts outlook for Australian and global economies.

Source: Bloomberg, Financial Times, Reuters

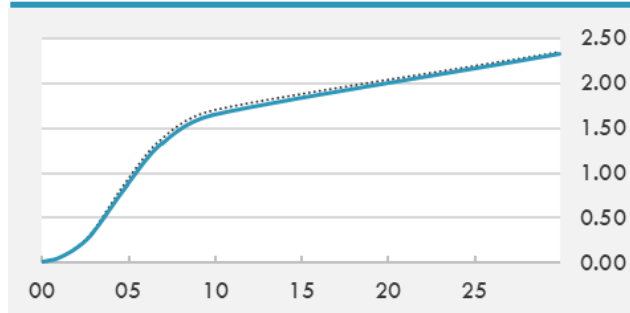
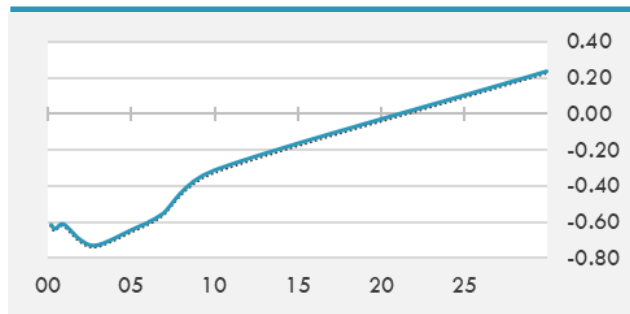
EUR/USD 30 DAYS SUPPORT & RESISTANCE

GBP/USD 30 DAYS SUPPORT & RESISTANCE

USD/JPY 30 DAYS SUPPORT & RESISTANCE

USD/CAD 30 DAYS SUPPORT & RESISTANCE


GLOBAL BOND INDICES

	Yield	ΔYield (in Bps)
Benchmark Indices		
US 10 Years Benchmark	1.656	-0.014
EU 10 Years Benchmark	-0.316	0.012
UK 10 Years Benchmark	0.797	0.002
Sovereign Bonds		
US Treasury Bond	0.594	0
Eurozone Sovereign Bond	-0.428	0
Japan Sovereign Bond	-0.104	0
Corporate Bonds		
US Corporate TR	2.222	-0.013
US High Yield Bond TR	4.005	-0.152
EUR Aggregate Corporate TR	0.312	-0.010
EUR High Yield TR	3.234	0.052
USD Emerging Market IG & HY	3.958	-0.023

US TREASURIES YIELD CURVE

EUR GENERIC YIELD CURVE


- JGBs look set to track Treasuries higher with investor focus on the Bank of Japan's purchases of longer-dated maturities.
- Treasury yields inch higher in Asia ahead of the release of the Federal Reserve's March meeting minutes later on Wednesday. Aussie and kiwi bonds firm.
- Italian bonds slide after the country mandated banks for a dual tranche bond sale, including its first new 50-year security in nearly five years.

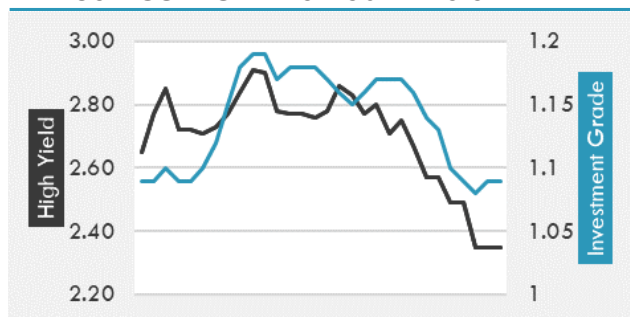
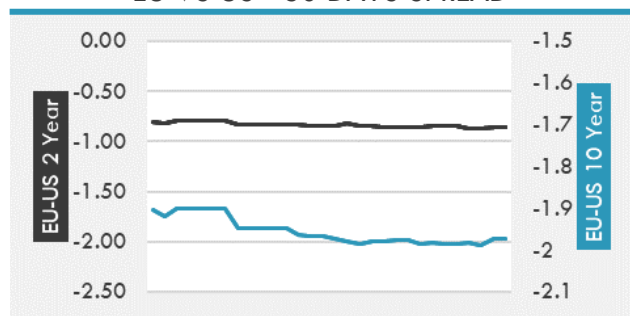
Source: Bloomberg, Financial Times, Economic times, Reuters

OVERNIGHT RATES - SWAPS

	Yield	ΔYield (in Bps)
3M USD LIBOR	0.200	0.000
3M EUR EURIBOR	-0.538	0.000
3M GBP LIBOR	0.090	0.000
3Y USD SWAP	0.499	-0.005
5Y USD SWAP	0.999	-0.019
10Y USD SWAP	1.694	-0.020
30Y USD SWAP	2.099	-0.026

FIXED INCOME SPREADS

	Spread	ΔSpread (in Bps)
USD 3M vs 10Y Spread	1.638	-0.014
USD 2Y vs 10Y Spread	1.497	-0.008
USD IG Spread	1.090	0.000
USD HY Spread	2.350	-0.140
EU vs US 10Y Spread	-1.972	0.035
EU vs US 2Y Spread	-0.858	0.008
EM vs Benchmark Spread	262.100	-1.500

USD CORPORATES - 30 DAYS SPREAD

EU VS US - 30 DAYS SPREAD


GLOBAL COMMODITIES MARKET

	Last Price	Daily %
Commodity Index	83.69	0.10%

Energy

WTI Crude Future	59.57	0.40%
Brent Crude Future	63.08	0.54%
NYMEX Gasoline	197.35	0.37%
NYMEX Heat Oil	179.83	0.23%
ICE Gasoil	500.5	-0.60%
NYMEX Natural Gas	2.469	0.53%

Precious Metals

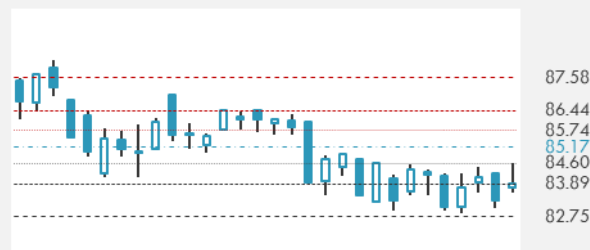
Gold Spot \$/Oz	1738.72	-0.26%
Silver Spot \$/Oz	25.0958	-0.26%
Platinum Spot \$/Oz	1242.82	0.17%
Palladium Spot \$/Oz	2675.83	-0.36%
Gold Future	1739.5	-0.20%
Silver Future	25.15	-0.31%
Platinum Future	1248	0.60%
Palladium Future	2669.5	-0.77%

Base Metals

LME Aluminum	2268	0.00%
LME Copper	9047	0.00%
LME Zinc	2824	0.00%
LME Nickel	16740	0.00%
LME Lead	1967	0.00%
LME Tin	25815	0.00%

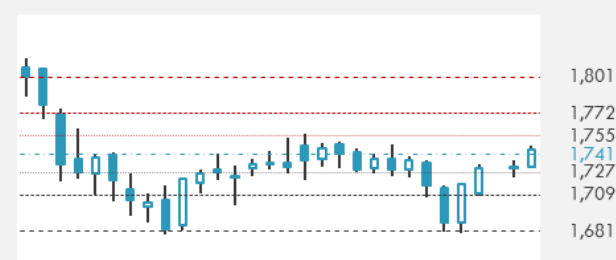
Agricultural

Corn CBT	557.75	0.63%
Wheat CBT	616.25	0.12%
Soybeans CBT	1423.25	0.32%
Bean Meal CBT	407.3	0.22%
Rough Rice CBT	13.13	0.00%
MDE Palm Oil	3831	0.76%
Soybean CBT	54.09	0.32%
Coffee ICE	126.85	0.00%
Sugar #11 ICE	15.16	0.00%
Cotton #2 ICE	80.14	1.16%
Cocoa ICE	2425	0.00%
Ethanol CME	1.85	0.00%
Lumber CME	1044.3	0.00%
Orange Juice ICE	109.2	0.00%
Live Cattle CME	124.625	0.00%
Feeder Cattle CME	151.775	0.00%
Lean Hogs CME	105.625	0.00%

COMMODITY INDEX SUPPORT & RESISTANCE

WTI OIL 30 DAYS SUPPORT & RESISTANCE


- Shale giant Occidental Petroleum Corp. praises 'brilliant' OPEC for rebalancing oil market. OPEC+ and U.S. shale have been rivals for much of the last decade.
- Gold slipped from the highest level in more than a week, with investors focused on details from the Federal Reserve's most recent meeting.

Source: Bloomberg, Reuters

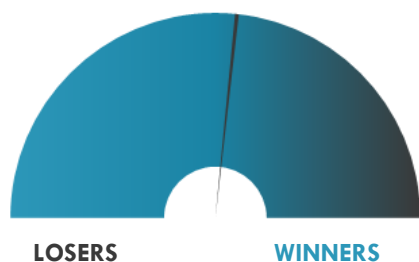
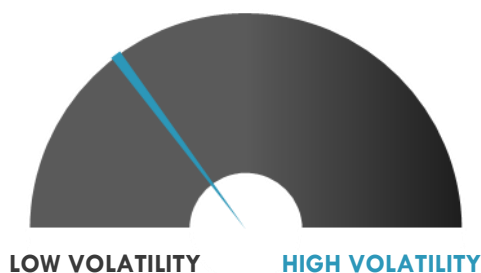
GOLD 30 DAYS SUPPORT & RESISTANCE

SILVER 30 DAYS SUPPORT & RESISTANCE


TOP 10 WINNERS

	Ticker	Last Price	Daily %
S&P 500 Stocks			
Illumina Inc	ILMN	414.84	+7.88%
Enphase Energy Inc	ENPH	157.92	+5.69%
Norwegian Cruise Line	NCLH	31.08	+4.61%
Etsy Inc	ETSY	206.01	+4.47%
Twitter Inc	TWTR	67	+4.30%
Discovery Inc	DISCA	43.38	+4.18%
Wynn Resorts Ltd	WYNN	136.37	+4.04%
Alaska Air Group Inc	ALK	73.74	+3.73%
ViacomCBS Inc	VIAC	44.35	+3.38%
Yum! Brands Inc	YUM	114.08	+3.11%

TOP 10 LOSERS

	Ticker	Last Price	Daily %
S&P 500 Stocks			
Paychex Inc	PAYX	95.42	-4.92%
Penn National Gaming	PENN	104.09	-2.57%
Applied Materials Inc	AMAT	139.54	-2.45%
KLA Corp	KLAC	346.6	-2.39%
Biogen Inc	BIIB	271.76	-2.20%
Howmet Aerospace Inc	HWM	31.4	-2.09%
Centene Corp	CNC	62.64	-2.06%
Westinghouse Air	WAB	79.39	-1.95%
Walgreens Boots	WBA	55.7	-1.94%
Automatic Data Proc.	ADP	189.41	-1.90%

S&P 500 DISTRIBUTION

S&P VOLATILITY INDEX


- Maxeon Solar Technologies -7.1% post-market after reporting Q4 adjusted earnings of \$0.11/share but saying elevated costs for glass, solar cells, freight and other items may persist well into H2 2021.
- Renren announces \$6M equity investment in Kaixin by subscribing Kaixin's newly designated convertible preferred shares.
- Outset Medical has filed for a 5M share offering, with half coming from the company and half from existing shareholders. The proposed maximum price per share is \$50.55.
- Sec Form 4 filings submitted by 9 Meters Biopharma today indicate a series of insider buys at the company. In the post-market, 9 Meters shares have added ~18.0% in reaction. The insiders of the transactions dated April 05 include the company CEO, CFO, and chairman of the Board.
- Outset Medical has started public stock offering that includes 2.5M shares in the primary offering and 2.5M in secondary. Price, actual size, and other terms not determined.
- Cruise line stocks are higher in after-hours trading after the CDC is reported to have said that cruises can start back up the middle part of this summer with restrictions. The details aren't in yet but the headline is enough to prompt some buying action from investors.
- Homology Medicines announces that the company intends to offer and sell \$50M of shares in an underwritten public offering.
- SMART Global Holdings shares are up 3.3% after hours after the company topped fiscal Q2 estimates with \$304M in revenue, up 12% on the year, and \$0.87, seven cents ahead of consensus.

KEY ECONOMIC INDICATORS

Country	Event	Surv (M)	Actual	Prior	Time
Austria	Wholesale Price Index MoM	--	--	1.50%	10:00
Canada	Int'l Merchandise Trade	1.30E+09	--	1.41E+09	15:30
China	Foreign Reserves	3.18E+12	--	3.20E+12	
Eurozone	Markit Eurozone Composite PMI	52.5	--	52.5	11:00
Eurozone	Markit Eurozone Services PMI	48.8	--	48.8	11:00
France	Markit France Services PMI	47.8	--	47.8	10:50
France	Markit France Composite PMI	49.5	--	49.5	10:50
Germany	Markit Germany Services PMI	50.8	--	50.8	10:55
Germany	Markit/BME Germany Composite PMI	56.8	--	56.8	10:55
Ireland	AIB Ireland PMI Services	--	54.6	41.2	3:01
Ireland	AIB Ireland PMI Composite	--	54.5	42.7	3:01
Italy	Markit Italy Services PMI	49	--	48.8	10:45
Italy	Markit Italy Composite PMI	52.2	--	51.4	10:45
Japan	Leading Index CI	99.7	99.7	98.5	8:00
Spain	Markit Spain Services PMI	45.8	--	43.1	10:15
Spain	Markit Spain Composite PMI	48.1	--	45.1	10:15
United Kingdom	Markit/CIPS UK Services PMI	56.8	--	56.8	11:30
United Kingdom	Markit/CIPS UK Composite PMI	56.6	--	56.6	11:30
United States	MBA Mortgage Applications	--	--	-2.20%	14:00
United States	Trade Balance	-7.05E+10	--	-6.82E+10	15:30

Source: Bloomberg

Banque BEMO sal

Head Office - Private and Corporate Banking

Elias Sarkis Ave., Bemo Bldg , Ashrafieh - Lebanon
Tel: +961 1 200 505 Fax: +961 1 217 860

Research & Development research@bemobank.com

Elias Sarkis Ave., Bemo Bldg , Ashrafieh - Lebanon
Tel: +961 1 200 505 Fax: +961 1 217 860

Disclaimer:

This report is published for information purposes only. The information herein has been compiled from, or based upon sources considered to be reliable (Bloomberg, SeekingAlpha, DailyStar...), but we do not guarantee or assume responsibility for its completeness and accuracy. This document should not be construed as a solicitation to take part in any investment, or as constituting any representation or warranty on our part. This report is not to be relied upon in substitution for the exercise of specialists.

We may not have taken any steps to ensure that the securities referred to in this report are suitable for any particular investor. The investments and services contained or referred to herein are not purported to be exhaustive, any person considering an investment should seek specialist advice on the suitability of an investment.

Nothing in this report constitutes investment, legal, accounting or tax advice, or a representation that any investment or strategy is suitable or appropriate to your individual circumstances, or otherwise constitutes a personal recommendation. Clients understand that it is their responsibility to seek legal and/or tax advice regarding the legal and tax consequences of their investment transactions. The consequences of any action taken on the basis of information contained herein are solely the responsibility of the recipient.

Investment instruments are subject to risk, including possible loss of principal amount invested. Past performance should not be taken as an indication or guarantee of future performance, and no representation or warranty, express or implied, is made regarding future performance. The value of securities and financial instruments is subject to exchange rate fluctuation that may have a positive or adverse effect on the price or income of such securities or financial instruments. Some investments mentioned in this report may have a high level of volatility. High volatility investments may experience sudden and large falls in their value causing losses when that investment is realized. Some investments may not be readily realizable and it may be difficult to sell or realize those investments, similarly it may prove difficult to obtain reliable information about the value, or risks, to which such an investment is exposed.

This report may provide the addresses of websites or references. We have not reviewed any such site and takes no responsibility for the content contained therein. Such address or reference is provided solely for convenience and information. Accessing such website through this report shall be at the recipients own risk.