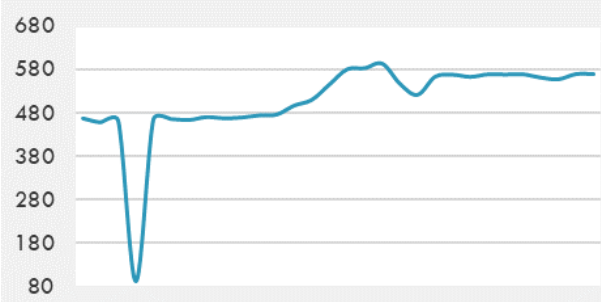
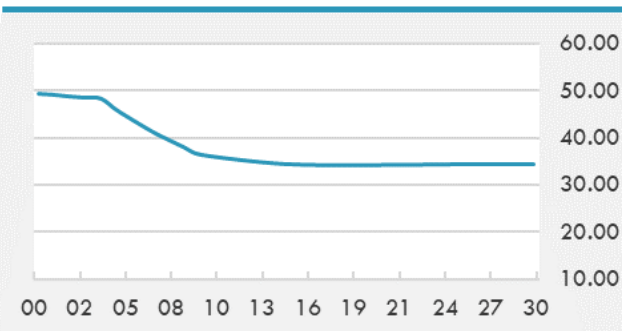


BEIRUT STOCK EXCHANGE

	Last	Daily %	YTD %	Dividend %
MSCI Lebanon	569.49	2.13%	30.10%	
Development and Reconstruction				
Solidere A	24	2.13%	29.73%	
Solidere B	24	2.13%	31.22%	
Banking				
Audi Listed	2.67	-3.26%	118.85%	
BLC Listed	0.93	0.00%	0.00%	
BOB Listed	17.8	0.00%	0.00%	
Byblos Listed	0.7	0.00%	32.08%	
BEMO Listed	1.2	0.00%	0.00%	
BLOM Listed	3.6	0.00%	73.91%	
Trading				
RYMCO	3.19	0.00%	0.00%	
Industrial				
Holcim	15	0.00%	3.45%	
Ciments Blancs	5.2	0.00%	26.83%	

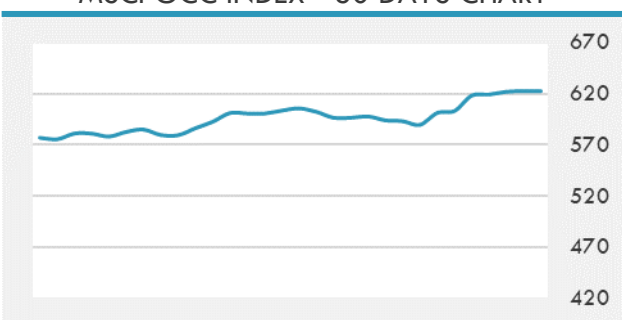
MSCI LEBANON INDEX - 30 DAYS CHART

LEBANESE USD SOVEREIGN CURVE


- The Saudi Stock Exchange's benchmark index TASI closed Wednesday at 10,014.30 points after gaining 0.25% or 25.2 points, exceeding the 10,000-level mark for the first time in more than six years.
- Emirates NBD has inked an agreement to sell a controlling interest in Dubai Bank to Eradah Capital. Expected to be completed within 2021, the transaction is subject to regulatory approval by the Central Bank of the UAE, according to the bank's disclosure to the Dubai Financial Market on Wednesday.

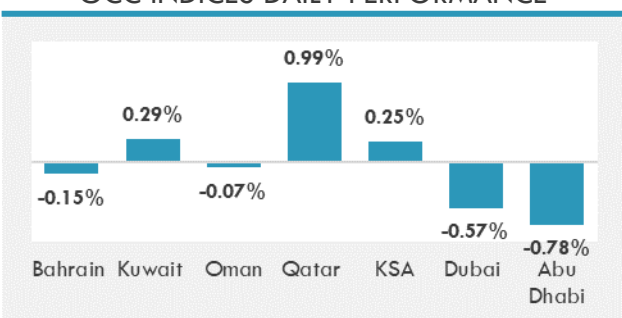
Source: Daily Star, Gulf Business, Mubasher, Bloomberg, Businessnews LB

GCC EQUITY INDICES

	Last Price	Daily %	YTD %
Bahrain	1454.27	-0.15%	-2.38%
Kuwait	5867.26	0.29%	5.79%
Oman	3714.49	-0.07%	1.52%
Qatar	10498.33	0.99%	0.60%
KSA	10014.3	0.25%	15.25%
Dubai	2559.36	-0.57%	2.70%
Abu Dhabi	6033.14	-0.78%	19.58%

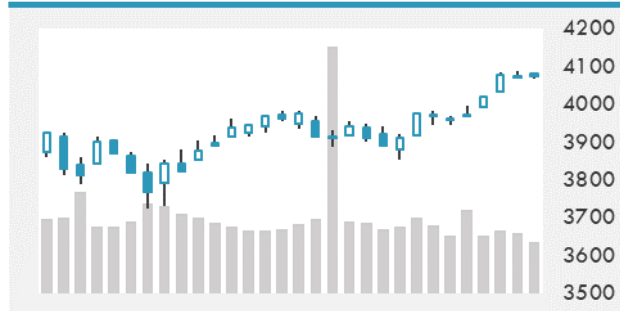
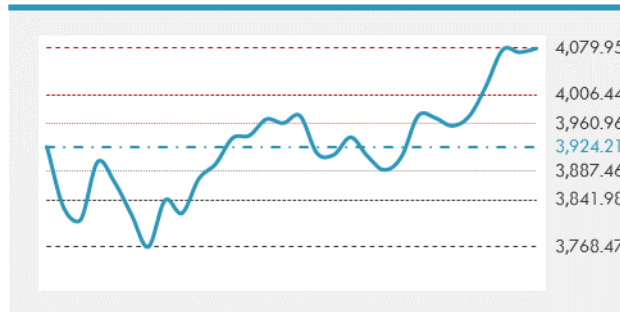
MSCI GCC INDEX - 30 DAYS CHART

LOCAL/GCC FOREIGN EXCHANGE

	Cross	Last Price
Lebanese Pound Spot	USD/LBP	1515.5
Bahraini Dinar Spot	USD/BHD	0.37704
Kuwaiti Dinar Spot	USD/KWD	0.302
Omani Rial Spot	USD/OMR	0.38499
Qatari Riyal Spot	USD/QAR	3.6417
Saudi Riyal Spot	USD/SAR	3.7504
UAE Dirham Spot	USD/AED	3.673

GCC INDICES DAILY PERFORMANCE


UNITED STATES EQUITY MARKET INDICES

	Last Price	Daily %	YTD %	Δ10D Vol
Major Indices				
Dow Jones	33446.26	0.00%	9.28%	-0.06%
S&P 500	4079.95	0.00%	8.62%	-1.28%
Nasdaq	13688.84	0.00%	6.21%	-5.60%
Sectors Indices				
Discretionary	1388.64	0.00%	6.61%	-4.60%
Staples	707.72	0.00%	1.64%	-0.36%
Energy	371.23	0.00%	29.74%	-3.07%
Financials	578.95	0.00%	18.05%	0.01%
Healthcare	1358.17	0.00%	2.58%	0.16%
Industrials	839.89	0.00%	12.05%	1.18%
IT	2432	0.00%	6.14%	-2.53%
Materials	497.72	0.00%	9.22%	4.58%
Com. Services	251.73	0.00%	13.43%	-4.26%
Utilities	330.08	0.00%	3.45%	0.19%
Real Estate	253.24	0.00%	11.12%	-0.90%

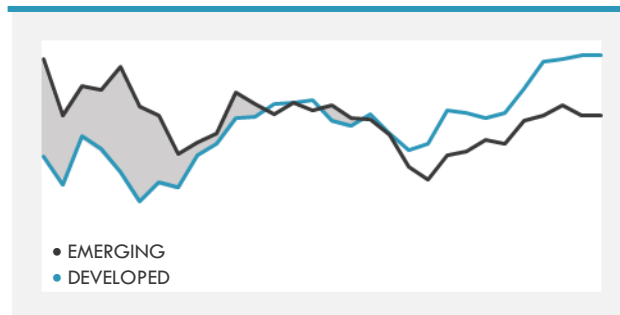
S&P 500 INDEX - 30 DAYS CHART

S&P 500 SUPPORT & RESISTANCE


- U.S. equities index futures were little changed, hovering around all-time highs, as investors awaited details of the Federal Reserve's most recent meeting.
- European stocks hovered near a record high as investors awaited minutes from the U.S. Federal Reserve's last meeting, with sentiment not helped by the European Union drug regulator saying there's a possible link between AstraZeneca Plc's vaccine and a rare blood-clotting disorder.
- Asian stocks traded slightly lower, dragged down by losses in Japan as Tokyo considered a return to stricter coronavirus measures amid rising infections.

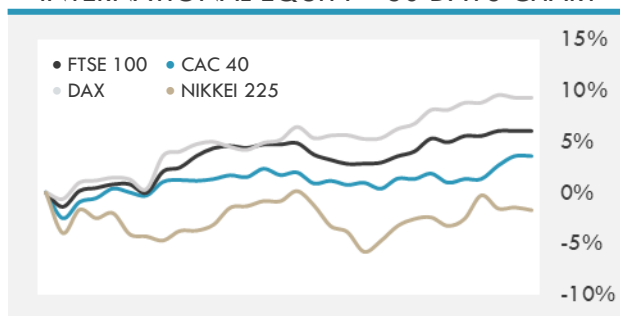
Source: Bloomberg, Financial Times, Reuters

INTERNATIONAL MARKETS INDICES

	Last Price	Daily %	YTD %	Δ10D Vol
World	1683.41	0.00%	6.64%	0.08%
Developed	2881.15	0.00%	7.10%	0.07%
Emerging	1338.76	0.00%	3.68%	-0.52%
Frontier	2493.6	0.00%	-3.79%	0.02%
Europe	143.82	0.00%	8.87%	0.32%
Latin America	2357.93	0.00%	-3.83%	-0.33%
Asia Pacific	206.93	0.00%	3.51%	0.16%

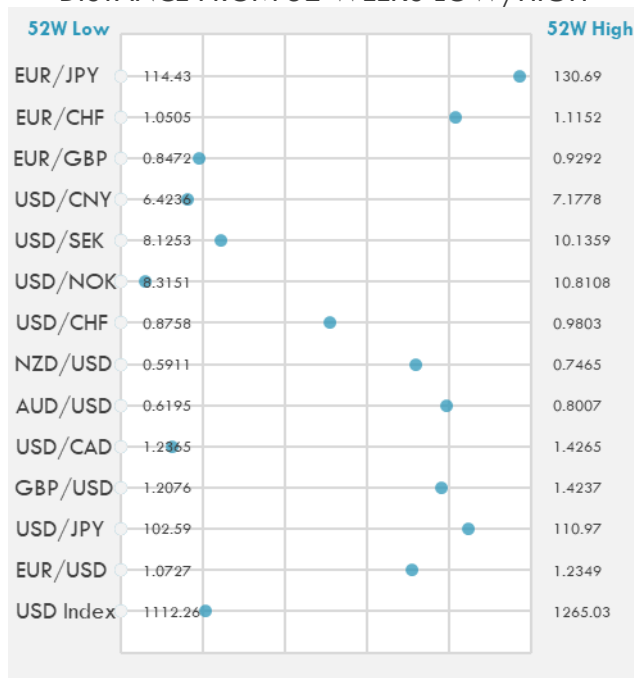
DEVELOPED VS EMERGING - 30 DAYS CHART

INTERNATIONAL EQUITY INDICES

	Last Price	Daily %	YTD %	Δ10D Vol
EuroStoxx 50	3956.77	0.00%	11.38%	0.45%
FTSE 100	6885.32	0.00%	6.58%	0.06%
CAC 40	6130.66	0.00%	10.43%	-0.83%
DAX	15176.36	0.00%	10.62%	0.52%
Swiss SMI	11128.18	0.00%	3.97%	0.42%
Nikkei 225	29646.49	-0.28%	8.02%	-0.39%
CSI 300	5110.92	0.14%	-1.93%	-2.48%

INTERNATIONAL EQUITY - 30 DAYS CHART


FOREIGN EXCHANGE MARKET

	Last Price	Daily %	Δ10D	Vol 25	ΔRR
Major USD Cross Rate					
USD Index	1143.7	-0.13%	-0.08%	-	
EUR/USD	1.1876	0.07%	-0.09%	0.185	
USD/JPY	109.68	-0.15%	-0.32%	-0.263	
GBP/USD	1.3762	0.18%	-0.33%	-0.473	
USD/CAD	1.2604	-0.04%	-0.24%	0.403	
AUD/USD	0.7633	0.25%	-1.18%	-0.703	
NZD/USD	0.703	0.24%	-1.08%	-0.795	
USD/CHF	0.9290	-0.14%	0.00%	-0.245	
USD/NOK	8.4678	-0.04%	-1.87%	1.133	
USD/SEK	8.6189	-0.09%	-0.04%	0.530	
USD/CNY	6.5470	0.07%	-0.01%	0.700	
Major EUR Cross Rate					
EUR/GBP	0.86294	-0.12%	-0.05%	0.528	
EUR/CHF	1.10325	-0.01%	-0.17%	0.305	
EUR/JPY	130.25	-0.11%	-1.19%	-0.448	

DISTANCE FROM 52 WEEKS LOW/HIGH


- A gauge of the dollar's strength retreated after a record of the latest Federal Reserve meeting affirmed that U.S. policy would remain accommodative to support growth.
- The pound fell to its lowest level versus the dollar since April 1 amid concerns over the U.K.'s vaccine rollout and blood-clot fears related to the AstraZeneca shot, placing doubt on whether Prime Minister Boris Johnson will be able to open the economy according to his timetable.
- Australian and New Zealand dollars trade slightly lower and near overnight session lows as commodity currencies fall amid strength in the greenback.

Source: Bloomberg, Financial Times, Reuters

EUR/USD 30 DAYS SUPPORT & RESISTANCE

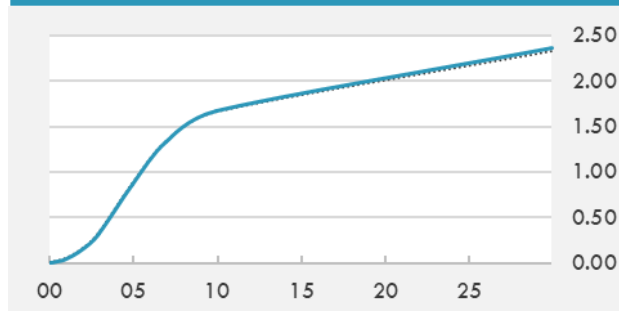
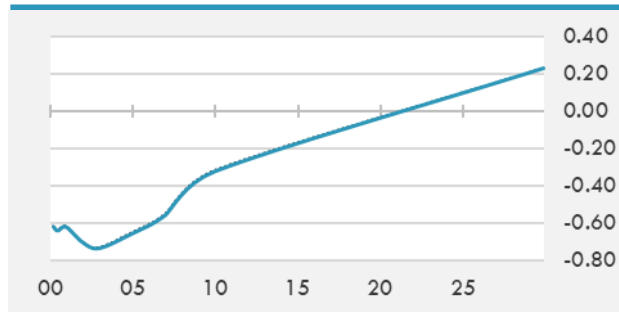
GBP/USD 30 DAYS SUPPORT & RESISTANCE

USD/JPY 30 DAYS SUPPORT & RESISTANCE

USD/CAD 30 DAYS SUPPORT & RESISTANCE


GLOBAL BOND INDICES

	Yield	ΔYield (in Bps)
Benchmark Indices		
US 10 Years Benchmark	1.6739	0.018
EU 10 Years Benchmark	-0.324	-0.008
UK 10 Years Benchmark	0.773	-0.024
Sovereign Bonds		
US Treasury Bond	0.594	0
Eurozone Sovereign Bond	-0.428	0
Japan Sovereign Bond	-0.104	0
Corporate Bonds		
US Corporate TR	2.229	0.008
US High Yield Bond TR	4.001	-0.004
EUR Aggregate Corporate TR	0.307	-0.004
EUR High Yield TR	3.116	-0.119
USD Emerging Market IG & HY	3.952	-0.006

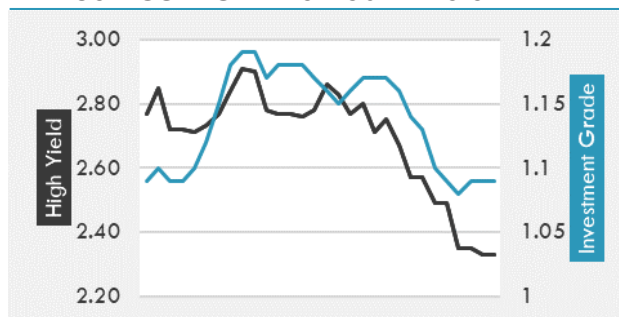
US TREASURIES YIELD CURVE

EUR GENERIC YIELD CURVE


- Treasuries edge higher before a host of Federal Reserve speakers on Thursday. A Japanese sale of 5-year bonds drew a higher bid-cover ratio.
- Gilts hold gains, outperform bunds by 1bp ahead of a 10-year bond auction Thursday.
- Italian bonds, bunds are steady after giving up their advances following respective bond sales and ahead of French and Spanish auctions Thursday.

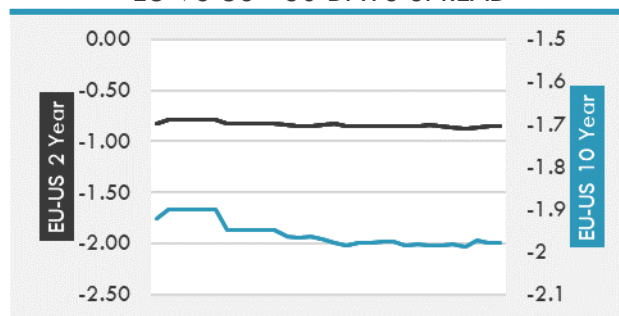
Source: Bloomberg, Financial Times, Economic times, Reuters

OVERNIGHT RATES - SWAPS

	Yield	ΔYield (in Bps)
3M USD LIBOR	0.197	0.000
3M EUR EURIBOR	-0.538	0.000
3M GBP LIBOR	0.087	0.000
3Y USD SWAP	0.493	-0.006
5Y USD SWAP	0.994	-0.005
10Y USD SWAP	1.707	0.014
30Y USD SWAP	2.128	0.028

USD CORPORATES - 30 DAYS SPREAD

FIXED INCOME SPREADS

	Spread	ΔSpread (in Bps)
USD 3M vs 10Y Spread	1.659	0.020
USD 2Y vs 10Y Spread	1.519	0.022
USD IG Spread	1.090	0.000
USD HY Spread	2.330	-0.020
EU vs US 10Y Spread	-1.998	-0.026
EU vs US 2Y Spread	-0.856	0.002
EM vs Benchmark Spread	264.900	0.000

EU VS US - 30 DAYS SPREAD


GLOBAL COMMODITIES MARKET

	Last Price	Daily %
Commodity Index	83.69	-0.09%

Energy

WTI Crude Future	59.46	-0.52%
Brent Crude Future	62.86	-0.47%
NYMEX Gasoline	194.5	-0.35%
NYMEX Heat Oil	179.71	-0.60%
ICE Gasoil	501	1.52%
NYMEX Natural Gas	2.497	-0.91%

Precious Metals

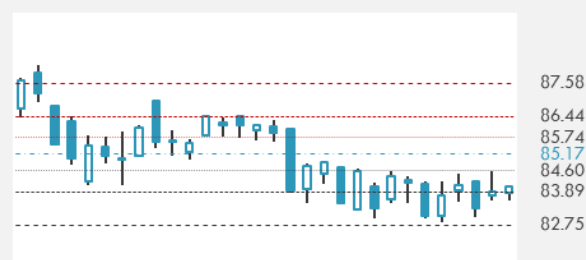
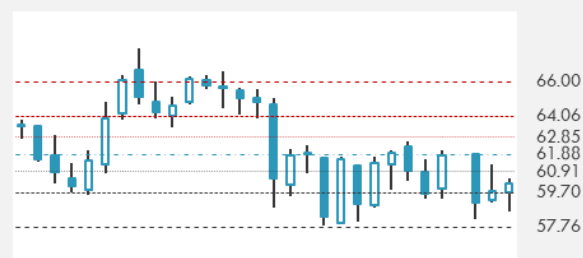
Gold Spot \$/Oz	1740.67	0.17%
Silver Spot \$/Oz	25.1389	-0.04%
Platinum Spot \$/Oz	1234.07	0.39%
Palladium Spot \$/Oz	2627.92	-0.03%
Gold Future	1741.1	-0.03%
Silver Future	25.195	-0.21%
Platinum Future	1238.2	0.51%
Palladium Future	2619	-0.08%

Base Metals

LME Aluminum	2260	0.00%
LME Copper	8916	0.00%
LME Zinc	2833	0.00%
LME Nickel	16636	0.00%
LME Lead	1994	0.00%
LME Tin	25790	0.00%

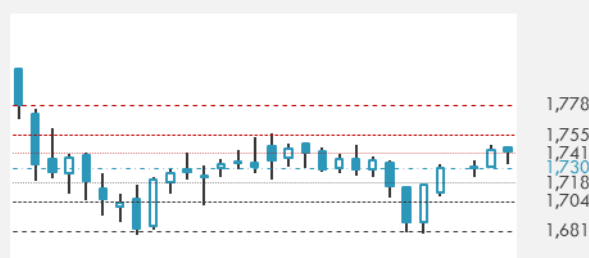
Agricultural

Corn CBT	559.75	-0.13%
Wheat CBT	617.5	0.20%
Soybeans CBT	1406.75	-0.14%
Bean Meal CBT	408.9	-0.05%
Rough Rice CBT	13.15	-0.15%
MDE Palm Oil	3778	-1.74%
Soybean CBT	50.89	-0.22%
Coffee ICE	126.75	0.00%
Sugar #11 ICE	15.14	0.00%
Cotton #2 ICE	80.07	0.72%
Cocoa ICE	2411	0.00%
Ethanol CME	1.851	0.00%
Lumber CME	1074.4	0.00%
Orange Juice ICE	108.8	0.00%
Live Cattle CME	125.275	0.00%
Feeder Cattle CME	152.675	0.00%
Lean Hogs CME	107.9	0.00%

COMMODITY INDEX SUPPORT & RESISTANCE

WTI OIL 30 DAYS SUPPORT & RESISTANCE


- ANZ expects further drawdowns in global oil inventories even as OPEC+ decides to gradually lift output, analysts (including Daniel Hynes) said in emailed note.
- Gold steadied, tracking movements in the dollar and bond yields.

Source: Bloomberg, Reuters

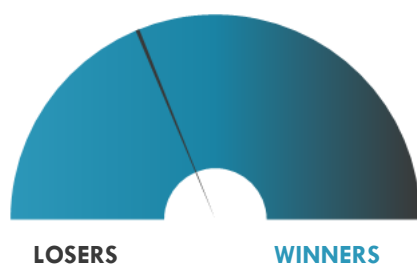
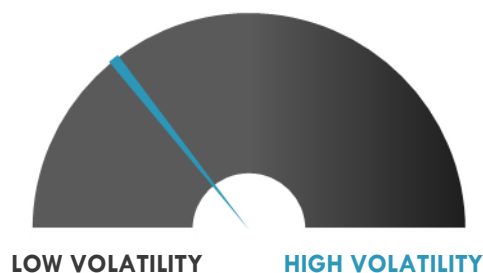
GOLD 30 DAYS SUPPORT & RESISTANCE

SILVER 30 DAYS SUPPORT & RESISTANCE


TOP 10 WINNERS

	Ticker	Last Price	Daily %
S&P 500 Stocks			
L Brands Inc	LB	64.29	+3.63%
Twitter Inc	TWTR	68.99	+2.97%
Essex Property Trust Inc	ESS	282.83	+2.53%
Facebook Inc	FB	313.09	+2.23%
Hess Corp	HES	73.01	+2.14%
NVIDIA Corp	NVDA	565.74	+2.03%
Regency Centers Corp	REG	58.27	+1.73%
Amazon.com Inc	AMZN	3279.39	+1.72%
JPMorgan Chase & Co	JPM	154.93	+1.57%
LKQ Corp	LKQ	43.83	+1.54%

TOP 10 LOSERS

	Ticker	Last Price	Daily %
S&P 500 Stocks			
Albemarle Corp	ALB	143.7	-6.01%
Enphase Energy Inc	ENPH	150.01	-5.01%
Trimble Inc	TRMB	79.74	-3.84%
PPG Industries Inc	PPG	147.97	-3.65%
Lamb Weston Holdings	LW	77.99	-3.62%
Illumina Inc	ILMN	400.55	-3.44%
Viatis Inc	VTRS	13.39	-3.18%
Tesla Inc	TSLA	670.97	-2.99%
Freeport-McMoRan Inc	FCX	33.98	-2.94%
Amcor PLC	AMCR	11.63	-2.92%

S&P 500 DISTRIBUTION

S&P VOLATILITY INDEX


- Progress Software initiates an offering of \$300M principal amount of convertible senior notes due 2026. Initial purchasers will be granted an option to purchase up to an additional \$45M of notes.
- Otonomy announces that it has commenced an underwritten public offering of shares. The company is expected to grant the underwriters a 30-day option to purchase up to an additional 15% of shares.
- Oncology Pharma has signed a license agreement with Regen BioPharma for intellectual property pertaining to mRNA to be used in developing a therapy for treating pancreatic cancer.
- Okta announced a slate of new and expanded products during the Oktane21 event. The new Okta Identity Governance product offers enterprises a cloud-native, self-service approach to solving complex user access and compliance issues, increasing user productivity and IT efficiency.
- Uber is launching a \$250M "driver stimulus" program to offer incentives and guarantees to existing and new drivers as the pandemic restrictions ease.
- Twitter has jumped 3.5% and hit its day's high after reports it's in the early stages of thinking about how to monetize its "Spaces" audio feature. Twitter began testing the voice-based feature in December with a small group.
- AMD and Xilinx announced that their respective shareholders have approved the proposed \$35B all-stock acquisition of Xilinx. The closing of the deal still depends on receiving the necessary regulatory approvals. The companies still expect to close before the end of 2021.

KEY ECONOMIC INDICATORS

Country	Event	Surv (M)	Actual	Prior	Time
Estonia	CPI YoY	--	1.10%	0.60%	8:00
Estonia	CPI MoM	--	-0.20%	0.90%	8:00
Finland	Trade Balance	--	--	-3.18E+08	9:00
France	Current Account Balance	--	--	-1.60E+09	9:45
Germany	Factory Orders MoM	1.20%	--	1.40%	9:00
Ireland	CPI EU Harmonized YoY	--	--	-0.40%	13:00
Ireland	CPI YoY	--	--	-0.40%	13:00
Ireland	CPI EU Harmonized MoM	--	--	0.30%	13:00
Ireland	CPI MoM	--	--	0.40%	13:00
Ireland	Industrial Production MoM	--	--	0.00%	13:00
Japan	BoP Current Account Balance	2.00E+12	2.92E+12	6.47E+11	2:50
Japan	Eco Watchers Survey Current SA	45	--	41.3	9:00
Japan	Eco Watchers Survey Outlook SA	51.8	--	51.3	9:00
Japan	Trade Balance BoP Basis	4.72E+11	5.24E+11	-1.30E+11	2:50
Netherlands	CPI YoY	--	1.90%	1.80%	7:30
Netherlands	CPI MoM	--	0.30%	0.90%	7:30
United Kingdom	Markit/CIPS UK Construction PMI	55	--	53.3	11:30
United States	Initial Jobless Claims	680000	--	719000	15:30
United States	Continuing Claims	3.64E+06	--	3.79E+06	15:30
United States	Langer Consumer Comfort	--	--	50	16:45

Source: Bloomberg

Banque BEMO sal

Head Office - Private and Corporate Banking

Elias Sarkis Ave., Bemo Bldg , Ashrafieh - Lebanon
Tel: +961 1 200 505 Fax: +961 1 217 860

Research & Development research@bemobank.com

Elias Sarkis Ave., Bemo Bldg , Ashrafieh - Lebanon
Tel: +961 1 200 505 Fax: +961 1 217 860

Disclaimer:

This report is published for information purposes only. The information herein has been compiled from, or based upon sources considered to be reliable (Bloomberg, SeekingAlpha, DailyStar...), but we do not guarantee or assume responsibility for its completeness and accuracy. This document should not be construed as a solicitation to take part in any investment, or as constituting any representation or warranty on our part. This report is not to be relied upon in substitution for the exercise of specialists.

We may not have taken any steps to ensure that the securities referred to in this report are suitable for any particular investor. The investments and services contained or referred to herein are not purported to be exhaustive, any person considering an investment should seek specialist advice on the suitability of an investment.

Nothing in this report constitutes investment, legal, accounting or tax advice, or a representation that any investment or strategy is suitable or appropriate to your individual circumstances, or otherwise constitutes a personal recommendation. Clients understand that it is their responsibility to seek legal and/or tax advice regarding the legal and tax consequences of their investment transactions. The consequences of any action taken on the basis of information contained herein are solely the responsibility of the recipient.

Investment instruments are subject to risk, including possible loss of principal amount invested. Past performance should not be taken as an indication or guarantee of future performance, and no representation or warranty, express or implied, is made regarding future performance. The value of securities and financial instruments is subject to exchange rate fluctuation that may have a positive or adverse effect on the price or income of such securities or financial instruments. Some investments mentioned in this report may have a high level of volatility. High volatility investments may experience sudden and large falls in their value causing losses when that investment is realized. Some investments may not be readily realizable and it may be difficult to sell or realize those investments, similarly it may prove difficult to obtain reliable information about the value, or risks, to which such an investment is exposed.

This report may provide the addresses of websites or references. We have not reviewed any such site and takes no responsibility for the content contained therein. Such address or reference is provided solely for convenience and information. Accessing such website through this report shall be at the recipients own risk.